



Product Information Guide

Roland AdvancedJET AJ-740 & AJ-1000

Overview

Redefining Standards in High Volume Production Printing

Designed for high-volume production printing, the AJ series represents Roland's high-speed industrial inkjet line for outstanding productivity in the most demanding print shops seeking to add grand format capabilities.

The 104" AJ-1000 and 74" AJ-740 are among the fastest printers in their class. The AJ-1000 delivers an impressive maximum print speed of 968 sqft./hr., high speed mode at 484 sqft./hr. and a precision standard mode of 323 sqft/hr. The AJ-740 features a top speed of 872 sqft./hr, high speed mode at 474 sqft./hr. and standard mode of 301 sqft/hr. Both models are ideal for high-volume printing of banners, billboards, vehicle and fleet graphics, backlit displays and other outdoor signage applications.

The AdvancedJET series utilizes six ultra-wide Piezo print heads designed for high-volume printing. A key component of the AJ series is Roland Intelligent Pass Control. This patent pending system precisely controls dot placement and creates a series of patterns that accurately fill in the smallest gaps between passes. The result is consistently smooth gradations and solid color fills with virtually no banding across a wide range of media. The AJ series produces brilliant color graphics on both coated and uncoated media with excellent results at even the highest print speeds.

Unlike other industrial printers, the AJ series can operate around the clock with very little maintenance and fine tuning. Easy setup and operation define the ownership experience from the very first print. Automated maintenance eliminates the need for daily manual cleanings while keeping heads, caps and wipers performing optimally. Enjoy worry-free unattended printing with the AdvancedJET high capacity ink delivery system and advanced media handling and take-up system supporting up to 220 lb. rolls. The optional Mesh Printing Units allow for easy direct printing on economical unlined mesh.

A complete solution, the AJ series includes powerful VersaWorks RIP software, packed with advanced features including Variable Data Printing and spot color matching through the Roland Color System. AdvancedJET buyers have a choice between two ink sets. EcoXtreme is a six-color (CMYKLCm) ink offering superior bonding, and scratch and alcohol resistance for outstanding outdoor durability. EcoXtreme LT delivers lower ink costs with up to one year durability. For optimum long-term performance and peace of mind, every AdvancedJET model is backed by the Roland Two-Year Trouble-Free Warranty, the industry's longest bundled service and support contract.

Choose the AdvancedJET series whenever productivity, reliability and outdoor durability are required.

**Pricing & Availability: AdvancedJET AJ-1000 \$62,995; AdvancedJET AJ-740 \$47,295; U.S. List Prices
EcoXtreme ink: \$199.99 per 1 liter cartridge; EcoXtreme LT ink: \$124.99 per 1 liter cartridge
Shipping Now**

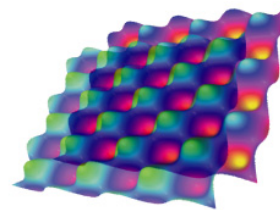


Key Features

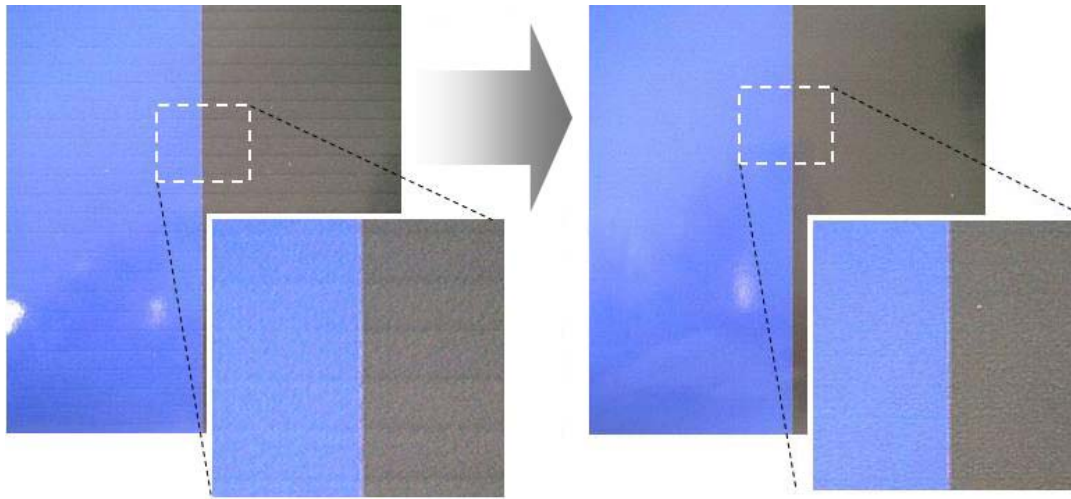
- Roland Intelligent Pass Control™
- Blazing Print Speeds
- Outstanding Print Quality
- High-Volume Production Printing
- Industrial Piezo Print Head Technology
- Ink Choices: EcoXtreme or EcoXtreme LT Inks
- Heavy-Duty Media Feed and Take Up System
- Roland VersaWorks RIP Software
- Integrated Tri-Heater System
- Ethernet Connectivity Standard
- Automated Maintenance System
- 74" and 104" Wide Format Inkjet Printers
- Two-Year Trouble-Free Warranty
- Optional Mesh Printing Units
- Optional Air Purification System

Roland Intelligent Pass Control

Roland Intelligent Pass Control technology developed by Roland software engineers represents the pinnacle of inkjet printing. This patent-pending system precisely controls dot placement between passes and delivers unprecedented imaging performance in all resolutions. The technology actually enhances image quality at higher print speeds thereby increasing productivity. The AdvancedJET series always produces smooth gradations and solid colors, while achieving faster throughput and virtually no banding in different print modes.



**Roland
Intelligent
Pass
Control**



Without Roland Intelligent Pass Control

With Roland Intelligent Pass Control

Piezo Print Technology for Outstanding Print Quality

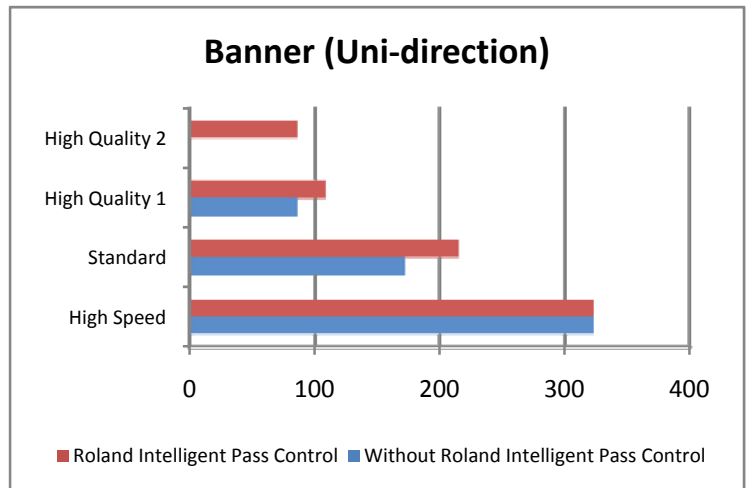
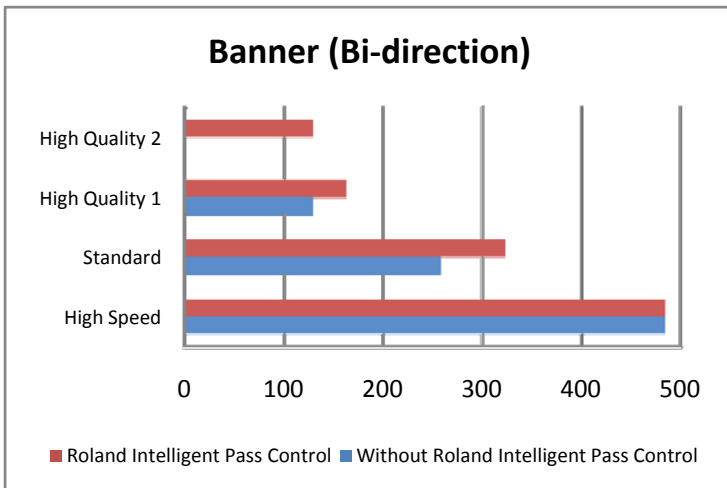
The AJ series features six super-wide, 3" Piezo print heads for high-speed, high-density printing in every print mode. Roland print modes designed for a wide range of different media types are accessible in VersaWorks RIP software and optimized for the AJ's Piezo print heads to achieve unparalleled image quality. The AJ series' maximum print resolution is 720 x 720 dpi.



Blazing Production Print Speeds

With a maximum print speed of 968 sqft./hr, high speed mode of 484 sqft./hr, and standard mode of 323 sqft/hr, the AJ series excels at high-volume printing. The AJ series produces brilliant color graphics for banners, billboards, vehicle and fleet graphics and other outdoor durable graphics on both coated and uncoated media – including economical unlined mesh.

Roland Intelligent Pass Control technology enhances both print quality and throughput, so the AJ series now achieves up to 25% faster print speeds in Standard mode on banner media.



AJ-1000 Print Modes	Resolution	Print Speed
Billboard	360x180dpi (1 pass) Bi-Di	968 sfph (90.0 sq m/hr)
High Speed	360x180dpi (2 pass) Bi-Di	484 sfph (45.0 sq m/hr)
High Speed	360x180dpi (2 pass) Uni-Di	323 sfph (30.0 sq m/hr)
Standard 1	360x360 (3 pass) Bi-Di	323 sfph (30.0 sq m/hr)
Standard 1	360x360 (3 pass) Uni-Di	215 sfph (20.0 sq m/hr)
Standard 2	360x360 (4 pass) Bi-Di	258 sfph (24.0 sq m/hr)
Standard 2	360x360 (4 pass) Uni-Di	172 sfph (16.0 sq m/hr)
High Quality 1	360x720 (6 pass) Bi-Di	162 sfph (15.0 sq m/hr)
High Quality 1	360x720 (6 pass) Uni-Di	108 sfph (10.0 sq m/hr)
High Quality 2	360x720 (8 pass) Bi-Di	129 sfph (12.0 sq m/hr)
High Quality 2	360x720 (8 pass) Uni-Di	86 sfph (8.0 sq m/hr)
High Quality – Vinyl	720x720dpi (16 pass) Bi-Di	65 sfph (6.0 sq m/hr)
High Quality – Vinyl	720x720dpi (16 pass) Uni-Di	43 sfph (4.0 sq m/hr)
AJ-740 Print Modes		
Billboard	360x180dpi (1 pass) Bi-Di	872 sfph (81.0 sq m/hr)
High Speed	360x180dpi (2 pass) Bi-Di	474 sfph (44.0 sq m/hr)
High Speed	360x180dpi (2 pass) Uni-Di	301 sfph (28.0 sq m/hr)
Standard 1	360x360 (3 pass) Bi-Di	301 sfph (28.0 sq m/hr)
Standard 1	360x360 (3 pass) Uni-Di	194 sfph (18.0 sq m/hr)
Standard 2	360x360 (4 pass) Bi-Di	237 sfph (22.0 sq m/hr)
Standard 2	360x360 (4 pass) Uni-Di	151 sfph (14.0 sq m/hr)
High Quality 1	360x720 (6 pass) Bi-Di	140 sfph (13.0 sq m/hr)
High Quality 1	360x720 (6 pass) Uni-Di	97 sfph (9.0 sq m/hr)
High Quality 2	360x720 (8 pass) Bi-Di	129 sfph (11.0 sq m/hr)
High Quality 2	360x720 (8 pass) Uni-Di	86 sfph (7.0 sq m/hr)
High Quality – Vinyl	720x720dpi (16 pass) Bi-Di	54 sfph (5.0 sq m/hr)
High Quality – Vinyl	720x720dpi (16 pass) Uni-Di	32 sfph (3.0 sq m/hr)

Speeds may vary based on print mode and media profiles

Choice of inks: EcoXtreme or EcoXtreme LT

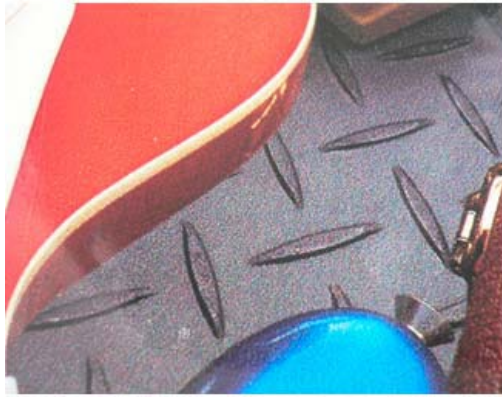
Roland EcoXtreme ink was developed exclusively for the AdvancedJET series to provide outstanding color density, wider gamut and rugged durability. Available in six colors (CMYK+LcLm), EcoXtreme ink produces vibrant images even in high-speed production modes on both coated and uncoated media. EcoXtreme is particularly well suited for volume banner production and vehicle/fleet graphics, offering exceptional bonding with uncoated banner substrates, vinyl and mesh, as well as enhanced scratch and alcohol resistance for extended outdoor durability up to three years.

The addition of EcoXtreme LT greatly enhances the value of AdvancedJET technology. EcoXtreme LT is competitively priced at 37 percent less than EcoXtreme. EcoXtreme LT offers virtually the same color gamut as EcoXtreme ink combined with excellent alcohol and scratch resistance. EcoXtreme LT is designed to provide up to one year outdoor durability and is an excellent choice for short and medium term applications such as event graphics, campaign signage and retail displays. This flexibility allows shops to maximize their Roland printing resources, expand their profit margins and continue to deliver exceptional print quality to customers.

AdvancedJET owners have the capability to switch from EcoXtreme to EcoXtreme LT at any time should their needs change during the life of the printer. This feature is easily accessed via the printer control panel and by using EcoXtreme cleaning fluid cartridges to clear out the ink system.

Light Ink Control

Roland profiles within Roland VersaWorks have been optimized for the AJ series to achieve unparalleled image quality on vinyl applications by employing Light Ink Control, resulting in superior print quality.



Without Light Ink Control



With Light Ink Control

High-Capacity Ink Delivery System

The AJ series features high-capacity 1-liter ink cartridges for seamless unattended printing. An advanced ink delivery system allows replacement of cartridges without pausing during printing.

Automated Intelligent Maintenance System

Operational costs for the AJ series are low compared to other industrial printers due to an innovative automated intelligent maintenance system that saves ink and reduces down time. This advanced system performs routine maintenance tasks automatically, eliminating the need for time-consuming daily manual cleanings. The AJ series maintenance system even adjusts the maintenance schedule automatically depending on the room temperature. As a result, manual cleaning around the print head and capping station is required only every two weeks.

Heavy-Duty Media Feed and Take Up System

The AJ series includes an automated media feed and take-up system to facilitate precision unattended printing. This pre-assembled unit includes convenient front-mounted feed and take-up rollers and an advanced tension-controlled take-up system that together ensure correct media feed and tracking through the longest production runs. The system handles rolls weighing up to 220 lbs.

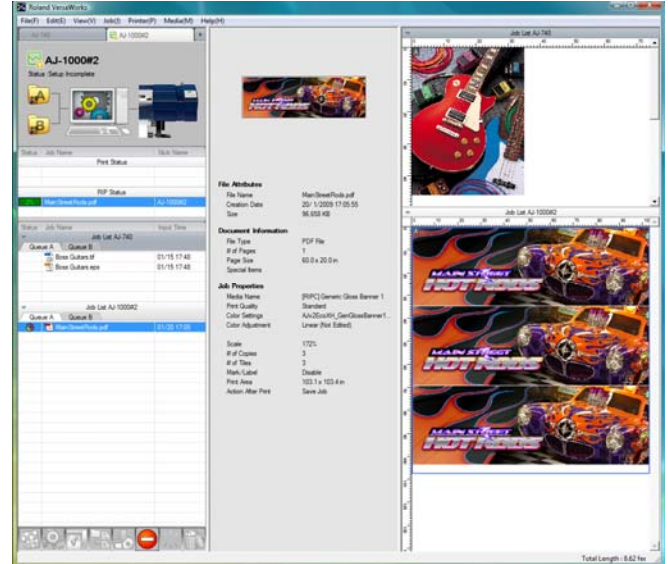


Integrated Tri-Heater and Blower System

The AJ-740 features an integrated tri-heater system and blower that make both high-speed printing and take-up possible. The heating system consists of three elements. A pre-heater opens pores in the media to improve its receptiveness. The print heater accelerates ink fastness and brightness by ensuring the ink is absorbed. Finally, the dryer and blower accelerate ink drying for better productivity, workability and scratch resistance.

Roland VersaWorks RIP Software

The AdvancedJET series takes full advantage of the latest Roland VersaWorks™ RIP software. This true Adobe PostScript 3 RIP is designed by Roland to ensure exceptional production output with unmatched ease-of-use. From version 3.0 onward, VersaWorks incorporates the latest Adobe CPSI 3018 engine for faster RIP processing, better color and smoother gradations. VersaWorks uses Roland Intelligent Pass Control to optimize the output quality on the AJ series. For greater RIP efficiency, VersaWorks can control up to 4 Roland devices. VersaWorks offers a variety of layout, edit and print functions that increase productivity. Users can preview jobs on screen and take advantage of two job queues for handling different print conditions. Users can automatically update VersaWorks through the Internet, ensuring that they always have the latest software version and Roland DGA ICC profiles available. VersaWorks is compatible with Windows® XP Professional, 2000 and Windows Vista™.



Ethernet Connectivity Standard

Roland understands that busy sign shops need to maximize the layout of their workstations and printing equipment. The AdvancedJET series includes a high-speed Ethernet (10/100 Base-T) interface for network connectivity. The printer can quickly process gigabytes of image data and be shared in a production shop from the moment its set up on a network.

Two-Year Trouble-Free Warranty



Roland inkjets combine unbeatable performance with legendary Roland reliability. As further proof of their unmatched reliability, Roland offers an unprecedented Two-Year Trouble-Free Warranty for the AdvancedJET series when equipped exclusively with Roland inks and the warranty registered within 60 days of delivery.

Summary

Over many years, Roland products have redefined the signage and graphics market. Many sign makers and digital printers have successfully grown their businesses with Roland printers. The key to growing a business even further is adding new special graphics products and services that differentiate the business from the competition. Roland professional wide format printers combine versatility, affordability, quality and performance to produce unique and compelling solutions that achieve that goal.

The AdvancedJET series incorporates major innovations including Roland Intelligent Pass Control for better image quality with virtually no signs of banding in all print modes. The AdvancedJET with Roland Intelligent Pass Control produces vibrant banners in high speed mode of up to 484 sfph and delivers up to 25% faster performance at 355 sfph in standard mode. The proof of the performance is always truly in the quality of the sellable output, and the AdvancedJET series delivers every time.

With the upgraded Roland AdvancedJET AJ-740 and AJ-1000, customers get the best of both worlds - high-quality, durable printing and production level performance critical for growing into the grand format market. The increased productivity and

image quality achieved with Roland Intelligent Pass Control deliver added-value for sign shops looking to maximize their investment.

Customers demand more value from their equipment investment than ever before. Roland provides a choice of EcoXtreme and EcoXtreme LT inks so that AdvancedJET owners can choose the ink solution that best meets their needs for durability, longevity and cost control. Roland understands that need and remains committed to innovation and to building a portfolio of products that deliver the best wide format printing experience possible. Our goal is to help sign shops become as productive and profitable as possible. And ultimately maintain them as repeat customers for Roland and our authorized dealers.

We look forward to further showcasing the performance of the AdvancedJET series with our authorized dealers and to creating new sales opportunities from our many loyal Roland customers and new prospects as well.

Happy Selling!