

GRAPHTEC

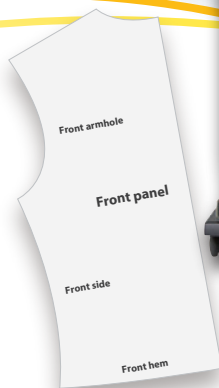
NEW

Improving work efficiency in pattern making

Garment Pattern Cutter

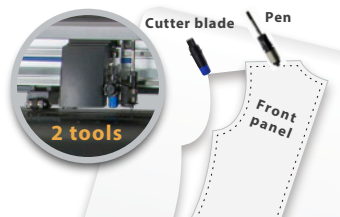
CE7000-130AP

Reliable cutting/plotting quality,
Intuitive operation, Easy to use



Dual tool configuration for cutting and plotting

It holds both a pen and a blade. The pen is for plotting and detailing graded patterns with seams, text, notches, grain direction, etc. The blade is to make the perforated cut of the pattern outline. The tool is automatically switched for cutting and plotting as needed, ensuring a high quality pattern and maximum productivity.



Network function

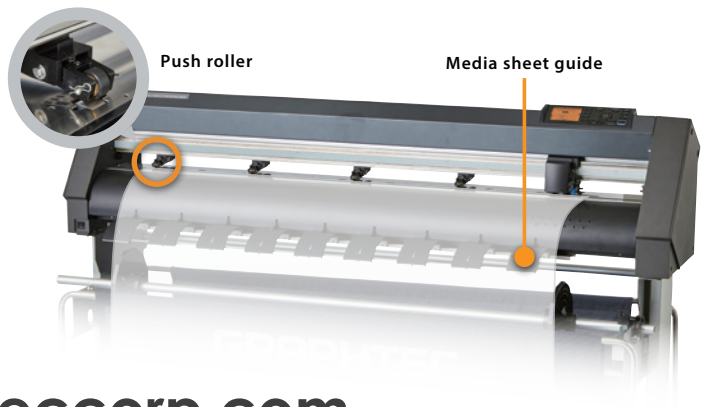
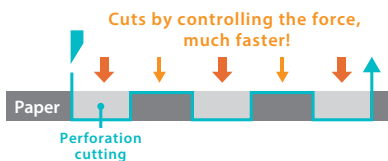
In addition to USB2.0 (High Speed) and Ethernet 10BASE-T/100BASE-TX is included as standard. It enables users to output data from multiple computers, regardless of installation location.

Improved media feeding stability (5 push rollers as standard)

The new design of XY mechanism increased rigidity of the main unit and improved media transportability. Pressure of the 3 middle push rollers can be adjusted in three levels (Strong / Medium / Weak), it helps to prevent media lifting. (Please refer to the user manual for setting pressure)

Enhanced speed when perforation cut

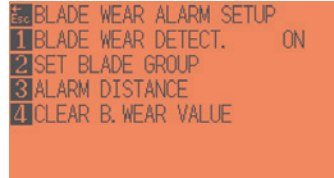
Perforation cutting is performed by controlling the cutting force instead of blade up/down movements, dramatically increasing throughput. The force is controlled by the design software using a new command.



www.graphoteccorp.com

Blade / Pen wear level alarm function

Able to measure cutting distance of consumables such as blades and pens, and set conditions for tool replacement.



High adaptability to the operating environment

The design of the media feed system ensures that loaded media is acclimated to the ambient temperature and humidity before plotting or cutting. The user-selectable media pre-feed function sets two outer tracks, enhancing media handling. Together, these two media feed elements ensure reliable cutting and plotting quality within the desired operating environment.

Specifications

Item	CE7000-130AP	
Configuration	Grit rolling type	
Drive method	Digital servo drive	
Max. cutting area (W x L)(*1)	1220mm x 50m	
Cutting area of guaranteed accuracy (*1)	1200mm x 3m	
Mountable media width (*2)	Min.	594mm
	Max.	1321mm
Mountable roll media inside-diameter	3 inches	
Mountable roll media outside-diameter	Max.200mm	
Mountable roll media mass	Max.20kg	
Number of push rollers	5 rollers	
Cutting speed	Max. 600mm/s at all direction	
Cutting force	Max. 4.41N (450gf)	
Mechanical resolution	0.005mm	
Programmable resolution	GP-GL: 0.1/0.05/0.025/0.01mm HP-GL™ (*3): 0.025mm	
Repeatability	Max. 0.1 mm in plot up to 2 m (*1)(*4)	
Mountable number of tools	2 tool	
Pen types	Oil-based ballpoint pen, Water-based fiber-tip pen	
Interface	USB 2.0(Full Speed), Ethernet 10BASE-T/100BASE-TX	
Buffer memory	2MB	
Command sets	GP-GL / HP-GL™ (Set by command) (*3)	
Display	Graphic type LCD with back-light (240dots x 128dots), supports 10 languages	
Power source	100V to 120V AC, 200V to 240V AC, 50/60 Hz (Auto switch)	
Power consumption	100W	
Operating environment	10 to 35 °C, 35 to 75 % R.H. (non-condensing)	
Guaranteed accuracy environment	18 to 28 °C, 40 to 65 % R.H. (non-condensing)	
External dimensions (W x D x H)	Approx. 1704 x 1148 x 1215 mm (Including Stand and Basket)	
Weight	Approx. 60kg (Including Stand and Basket)	
Compatible OS (*5)	Windows 10/8.1/7	

* This is the specialized model for high grade fine paper for apparel use.

*1 Operated with Graphtec specified cutting condition and media.

*2 Mountable media width. The minimum paper width with guaranteed accuracy is the width when the push rollers are placed on 5mm inside of both side of media. Sheet paper (cut paper) is not guaranteed.

*3 HP-GL™ is a registered trademark of Hewlett-Packard Company.

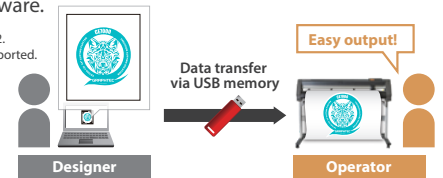
*4 Graphtec specified Mylar film is used to check the accuracy.

*5 Graphtec does not support software/driver used with operating systems that have become obsolete and are no longer supported by the OS developer.

Data output via USB flash memory without PC

USB memory reading port enables users to output data via USB flash memory without PC or dedicated software.

* The USB memory format only supports FAT32. Please note that NTFS and exFAT are not supported.



New design with ease of use

All operations such as media loading and unloading, and menu settings can be conveniently done from the front of the machine. For added convenience, heavy media can be loaded on the low position of the front media stocker as well. This front-loading configuration also saves valuable production space.

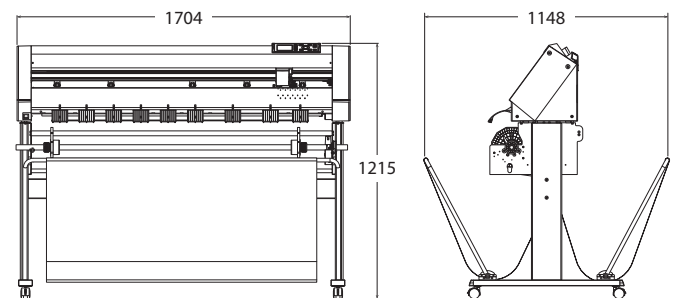
Standard accessories

Item	Description	Q'ty
Power cord	The type of cord is different by destination.	1
USB Cable	2.9m long	1
Cutter Blade Holder	PHP33-CB09N-HS	1
Cutter Blade	CB09UB-1P	1
Loupe	PM-CT-001	1
Stand for CE7000	ST0121, Stand with Basket	1
Ballpoint pen holder	PHP34-BALL	1
Oil-based ballpoint pen	KB700-BK	1
CD-ROM	User manual, Windows driver	1
Printed document	Setup Manual, Cutter Blade Manual and Safety Manual	1

Supplies

Item	Part No.	Description	Package
Cutting blade holder	PHP33-CB09N-HS	For CB09U series blade	1 set/pack
	PHP33-CB15N+HS	For CB15U series blade	1 set/pack
Cutting blade	CB09UB-5	0.9mm dia. 45° angle, Supersteel	5 blades/pack
	CB15U-5	1.5mm dia. 45° angle, Supersteel	5 blades/pack
Fiber-tip pen holder	PHP31-FIBER	Pen holder for KF700 series pen	1 set/pack
Water-based fiber-tip pen	KF700-BK	Pen (black)	10 pens/pack
Oil-based ballpoint pen	KF700-RD	Pen (red)	10 pens/pack
Ballpoint pen holder	PHP34-BALL	Pen holder for KB700 pen	1 set/pack
Oil-based ballpoint pen	KB700-BK	Pen (black)	10 pens/pack
Cutting mat	PM-CR-011	For CE7000-130/-130AP replacement cutting mat	2 sets/pack
High grade fine paper	PR1200-SQ-100-2	1200mmx100m 81.4g/m ²	2 rolls/pack

External dimensions (Unit : mm, Tolerance : +/- 5mm)



• Brand names and product names listed in this brochure are the trademarks or registered trademarks of their respective owners.
• Items mentioned are subject to change without notice. For more information about product, please check the web site or contact your local representative.



Important safety instructions

- Before using it, please read the user manual and then please use it properly in accordance with the description.
- To avoid malfunction or electric shock, please ensure ground connection and use it in specified power source.

GRAPHTEC
Graphtec Corporation

503-10 Shinano-cho, Totsuka-ku, Yokohama 244-8503, Japan
Tel : +81-45-825-6250 Fax : +81-45-825-6396

Website <http://www.graphteccorp.com>

eco RoHS compliant product



CE7000-130AP_JE10586_1P