



Tech Support Documents

Topic: CAMMJET CJ-60/70

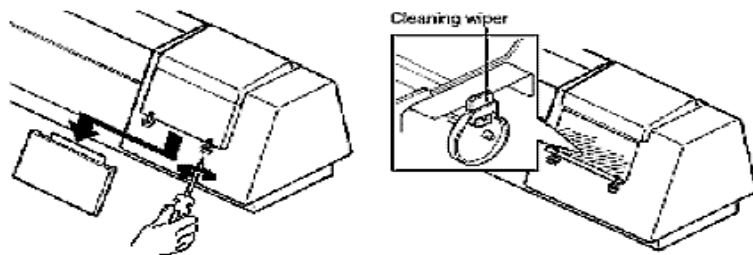
ST52500

1. Head Wash Procedure

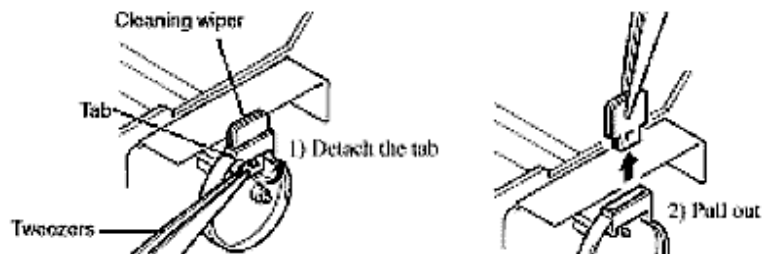
1. Press and hold the Left, Right and Down arrow keys. Then turn the Power on. Your machine is now in Service Mode.
2. Scroll down through the menu, until Head Wash is on the LED display.
3. Press Enter, and follow the instructions on the LED display.

2. Changing the Cleaning Wiper on the CAMMJET (necessary when changing from dye-to-pigment or pigment-to-dye)

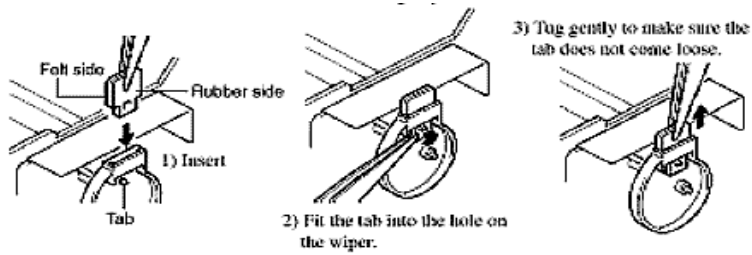
1. Use a phillips screwdriver to loosen the bolts, and remove the front-right cover from the unit.



2. Use tweezers to remove the cleaning wiper.



3. Use tweezers to attach the new cleaning wiper.



4. Install the cover

Be careful with the direction of the cleaning wiper.
Make sure dust won't get on the wiper when fixing it.
Take care to ensure no dust or grime adheres to the cleaning wiper.

Disclaimer: All of the information contained in this document is based on the information available at the time of its creation. In no event will Roland DGA Corporation be liable for any damages, including damages for loss of business profits, business interruption, loss of business information and the like arising out of the use of or inability to use these materials.