

Model: Roland MDX, JWX, EGX, MPX or LPX  
Subject: Windows Power Save Features  
Author: PG

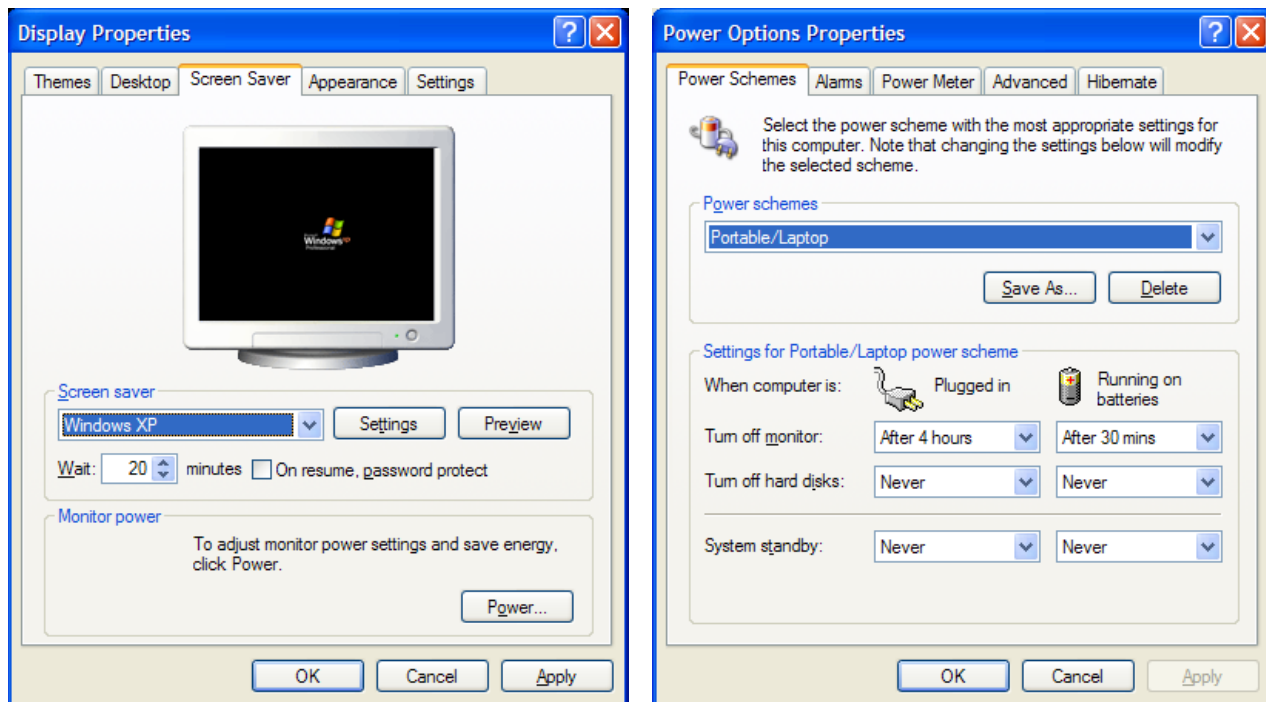
---

The following document covers possible communication issues that may be induced by Windows power save features ranging from laptops to desktop computers.

The MDX, JWX, EGX and LPX machines are in constant communication with the computer. If the Windows based computer enables its Power Save options, it may turn off the hard disks or go into system standby mode. This could disrupt communication to the device causing a lock up or freeze.

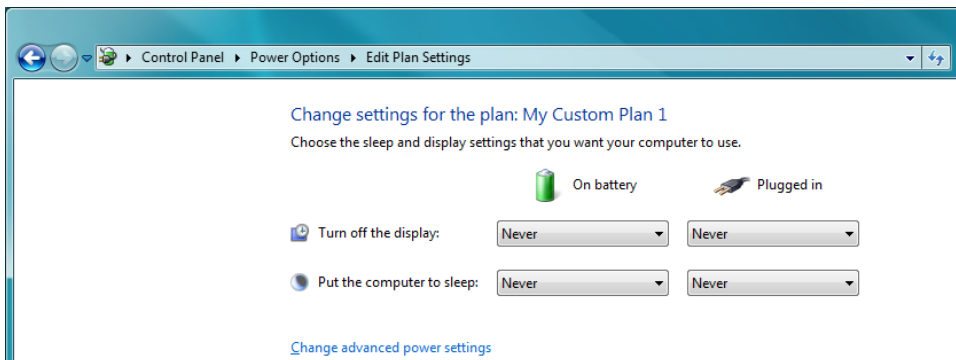
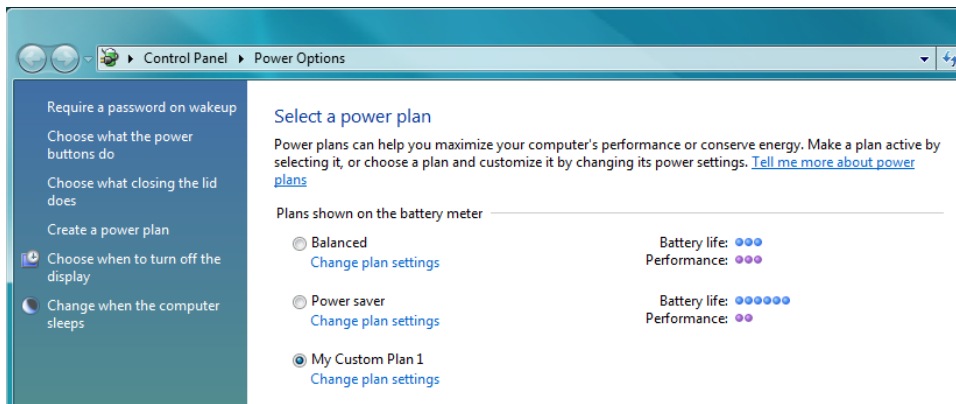
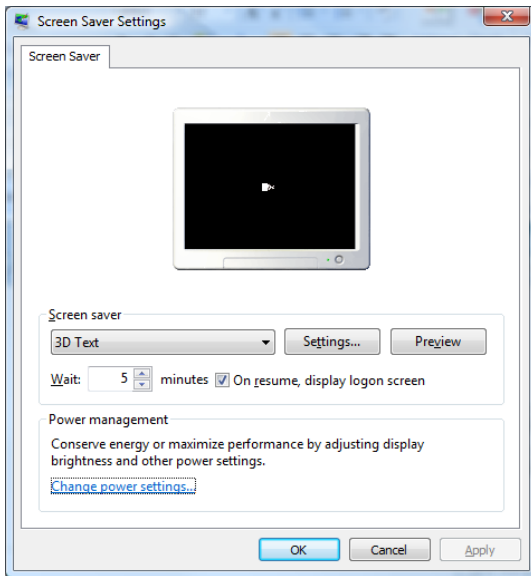
On the MDX and EGX equipment, the machine may “hang” or simply pause in the middle of a job with the spindle on. This is indication that the machine is waiting for the next command and the computer is not sending it.

The below sequence is for Windows XP. The Power Options are located under the screen saver portion of the Display Properties. Click on Power and modify the Power Options so that Turn off hard disks and System standby are set to “Never” for “Plugged in” or if you have a laptop, “Running on batteries”.



Model: Roland MDX, JWX, EGX, MPX or LPX  
Subject: Windows Power Save Features  
Author: PG

The below sequence is for Windows Vista computers. Similar to XP, you need to ensure that the computer “Never” puts the computer to sleep.



Disclaimer: All of the information contained in this document is based on the information available at the time of its creation. In no event will Roland DGA be liable to you for any damages, including damages for loss of business profits, business interruption, loss of business information and the like arising out of the use of or inability to use these materials.