

Support Bulletin: RASD-SB00014

Model: Roland EGX-20

Subject: Quick Setup for Diamond Drag (Scribing) / Burnishing

Date: 12/29/2005

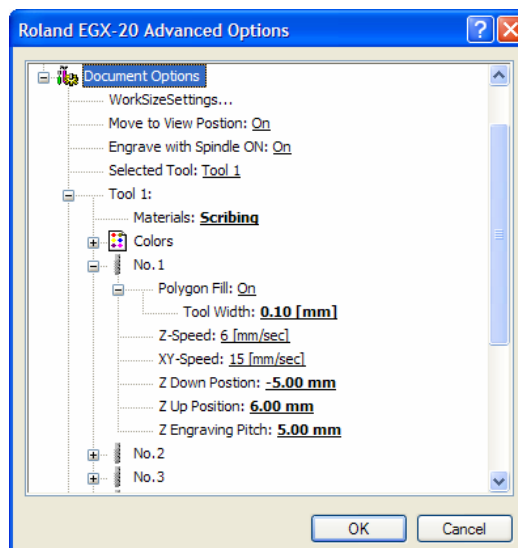
Author: RR

The following is a quick setup outline for Diamond Drag (Scribing) / Burnishing engraving for the EGX-20.

Tools Required: ZB-20, C2-125-DGK (for Diamond Drag) or BT-125.010K (for Burnishing), Brass or Aluminum Plate.

1. Power unit off
2. Remove any existing tools and white nosecone assembly.
3. Install the ZB-20 and Diamond Drag or Burnishing tool. The tool should protrude approx ½" to ¾" from the bottom of the spindle unit.
4. Load material on the table.
5. Power on the EGX-20.
6. Once the unit finishes initializing, press the VIEW button.
7. Using the joystick, navigate the tip of the tool over the lower left corner of the material (origin is lower left corner closest to you as you look at the machine).
8. Press the ORIGIN button until the light comes on and release (this will set the home position of the unit).
9. Using the joystick move the material somewhere over the material (away from the edge).
10. Press the joystick button in until the Z Axis light comes on.
11. Using the joystick, bring the Z down (tool) to the surface of the material.
12. Once at the surface bring the Z down an additional 1/8" to compress the spring on the ZB-20.
13. Press the ORIGIN button until the light comes on and then release (this will set the Z0 position).
14. Setup and configure Dr. Engrave to match the machine and then output the file (refer to the screenshots below).

(Screenshot of EGX-20 Print Driver for Diamond Drag Engraving)



Disclaimer: All of the information contained in this document is based on the information available at the time of its creation. In no event will Roland ASD be liable to you for any damages, including damages for loss of business profits, business interruption, loss of business information and the like arising out of the use of or inability to use these materials.

Support Bulletin: RASD-SB00014

Model: Roland EGX-20

Subject: Quick Setup for Diamond Drag (Scribing) / Burnishing

Date: 12/29/2005

Author: RR

(Screenshot of EGX-20 Print Driver for Burnishing)

