

EGX-350 DESKTOP ENGRAVER

Bringing Your Ideas to Life



Elegant Outdoor Signs



First-Class Personalized Gift Items



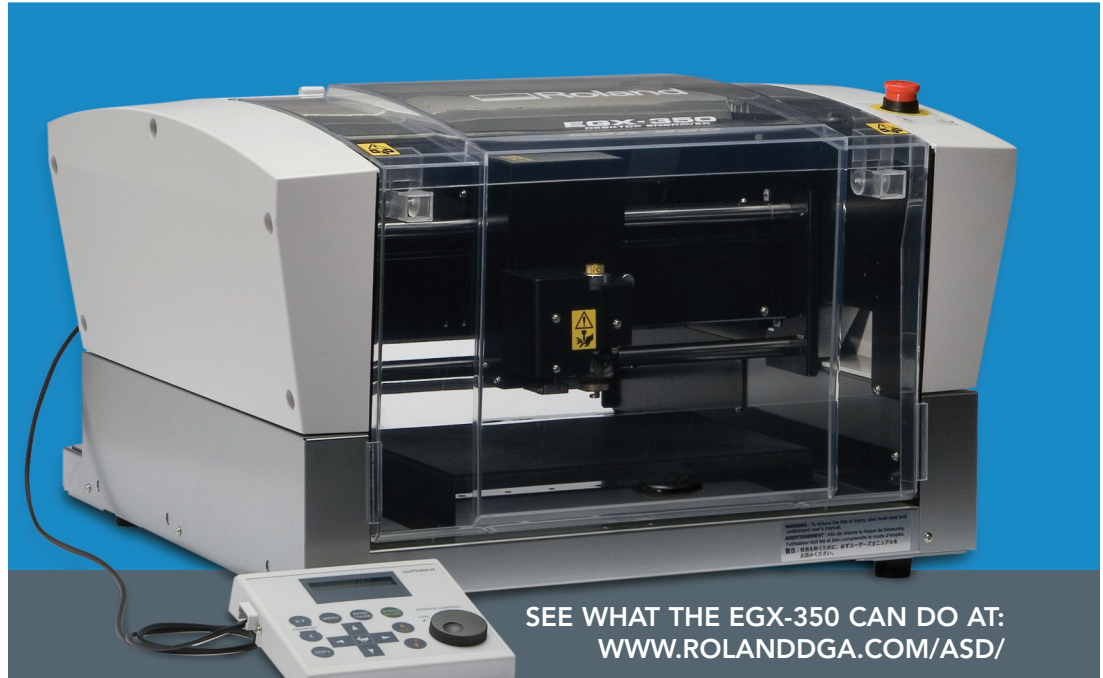
Metal, Plastic or Brass Nameplates



Custom Rhinestone Apparel



Indoor & ADA Signage



SEE WHAT THE EGX-350 CAN DO AT:
WWW.ROLANDDGA.COM/ASD/

Quality. Speed. Versatility. The EGX-350 has what it takes to give your customers what they really want! Powered by a 20,000 rpm DC brushless motor, the desktop engraver produces a wide range of popular jobs with crisp text and clear graphics. Indoor signs, gifts and awards, and custom rhinestone apparel all turn out perfectly.

Ease of use is one of the EGX-350's core strengths. An advanced surface detector simplifies setup by automatically determining the Z axis starting point. A hand-held control panel with a large backlit LCD screen lets you quickly select engraving options, such as spindle speed.

Bundled EngraveStudio™ software makes it fast and easy to produce everything from simple nameplates to elegant wood signs and luxury gift items. With single stroke fonts and a special V-Carving mode, the software generates a perfect hand-carved look. It imports your designs in ai and eps file formats, and lets you preview them to save precious materials and time. You can even create design templates for heat pressing rhinestones onto custom apparel.

Roland
Advanced Solutions Division

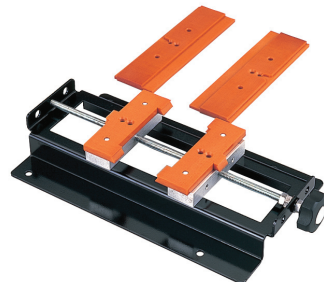
Specifications

EGX-350 DESKTOP ENGRAVER

Model	EGX-350
Table Size	12"(X) x 9.1"(Y) [305 x 230 mm]
Maximum Cutting Area	12"(X) x 9.1"(Y) x 1.6"(Z) [305 (X) x 230 (Y) x 40 mm (Z)]
Feed Rate	X, Y-axis: Up to 2.4 ips (60mm/sec). Z-axis: Up to 1.2 ips (30mm/sec).
Software Resolution	0.004" (0.01 mm) /step or 0.001" (0.025 mm) /step (XY axis only)
Mechanical Resolution	X, Y-axis: 0.0001" (0.0025 mm) /step
Spindle Motor	Brushless DC motor, max. 50 W
Revolution Speed	5,000 to 20,000 rpm
Tool Chuck	Cutter holder and collet
Interface	USB (compliant with Universal Serial Bus Specification Revision 1.1) and serial (RS-232C-compliant)
Instruction System	RML-1
Power Requirements	AC 100 to 120 V \pm 10%, 1.3 A, 50/60 Hz (overvoltage category II, IEC 60664-1) or AC 220 to 240 V \pm 10%, 0.6 A, 50/60 Hz (overvoltage category II, IEC 60664-1)
Acoustic Noise Level	During operation: 60 dB(A) or less (when not cutting), During standby: 40 dB(A) or less, As specified by ISO 7779
External Dimensions	15.5" (W) x 24.3" (D) x 23.3" (H) [393 (W) x 616 (D) x 591 (H) mm] When cover is open: 23.56" x 21.5" x 27" [598 (W) x 545 (D) x 685 mm]
Weight	75 lb. (34 kg)
Operation Temperature	41° to 104° F (5° to 40° C)
Operating Humidity	35 to 80% (no condensation)
Accessories	Power cord, depth regulator nose (nose unit), nose-unit retainer (retaining screw, spring), spare mounting screw (for the cutter holder), character cutter (diameter 3.175 mm), flat cutter (diameter 3.175 mm), wrench, solid collet (diameter 3.175 mm), solid collet (diameter 4.36 mm), hexagonal wrench, hexagonal screwdriver, handy panel, adhesive sheet, vacuum adapter for chip cleaning, Roland Software CD-ROM, Roland EngraveStudio™ CD-ROM, Roland Software Program Guide, Roland EngraveStudio™ Program Guide, and User's Manual
Roland EngraveStudio™ System Requirements	
OS	Windows Vista™ (32-bit edition), Windows® XP, or Windows® 2000
CPU	Pentium® III, 1 GHz or faster recommended
RAM	Windows Vista: 512 MB or more recommended, Windows XP/2000: 256 MB or more recommended



Roland's optional T-Slot makes it easy to secure objects of different sizes for precision engraving.
Part number: ZIT-35



Roland's optional Center Vise holds objects up to 5.9" (X) x 5.8" (Y) x 1.3" (Z).
Part number: ZV-23C



Roland's optional Vacuum Table keeps engraving material in place, eliminating the need for adhesive sheets.
Part number: ZV-23A



Bundled Roland EngraveStudio software gives you the power to create whatever your customers need!

Roland reserves the right to make changes in specifications, materials or accessories without notice. Your actual output may vary. For optimum output quality, periodic maintenance to critical components may be required. Please contact your Roland dealer for details. No guarantee or warranty is implied other than expressly stated. Roland shall not be liable for any incidental or consequential damages, whether foreseeable or not, caused by defects in such products. All trademarks are the property of their respective owners.

Roland
Advanced Solutions Division

Authorized Dealer:

www.RolandASD.com

Order genuine Roland parts & accessories at www.RolandASDStore.com

RASD-EGX350-01