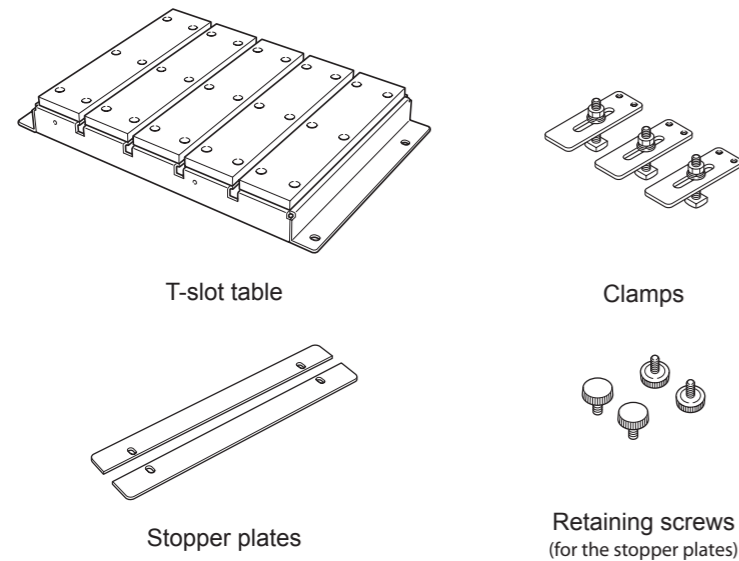


ZTT-35 (T-slot table for the EGX-350/360) Installation Manual



Most of the figures in this document depict the EGX-350.

Included Items

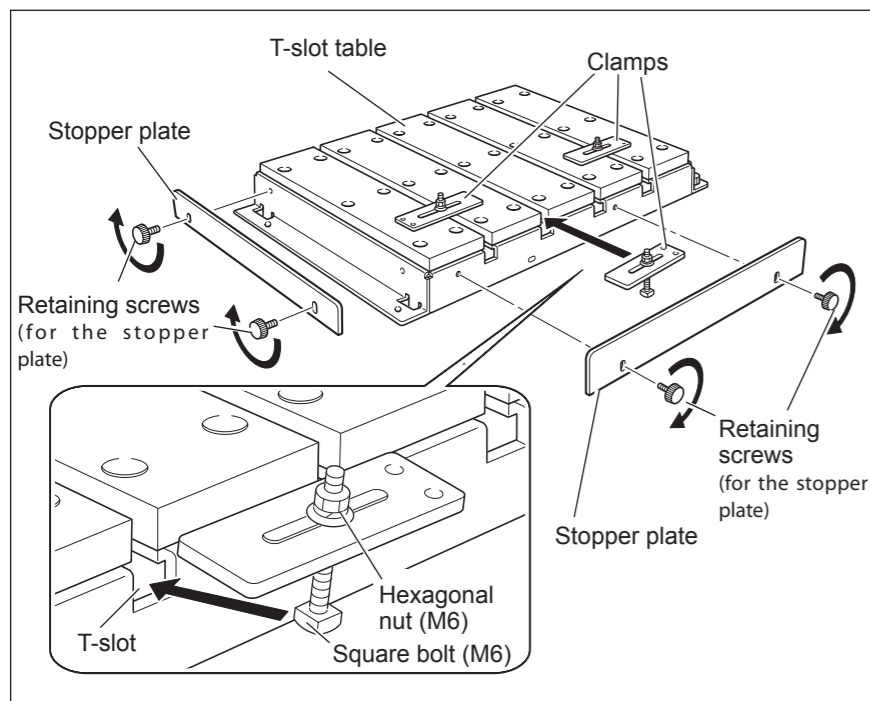


Installation



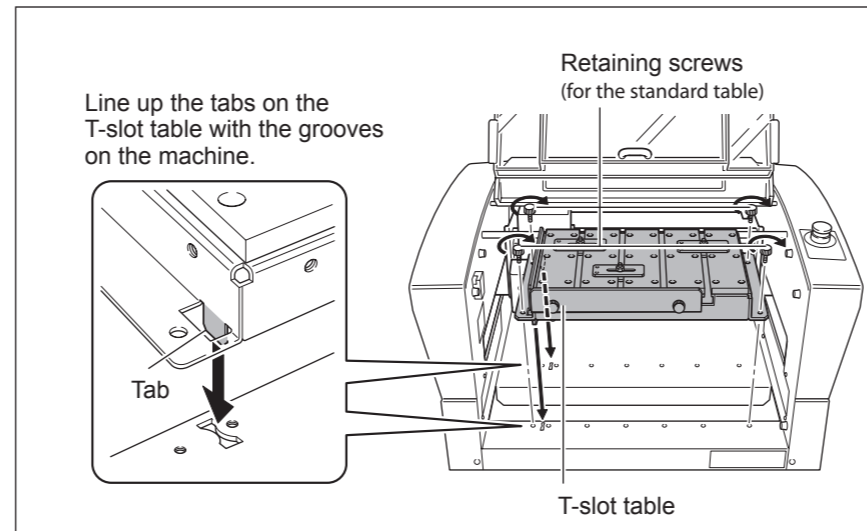
Before attempting installation or replacement, switch off the machine's power and disconnect the power cord.
 Attempting such operations while the machine is connected to a power source may result in injury or electrical shock.

Attaching the stopper plates and clamps



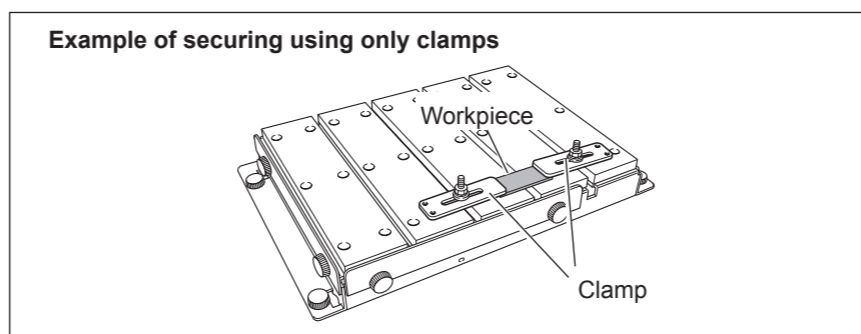
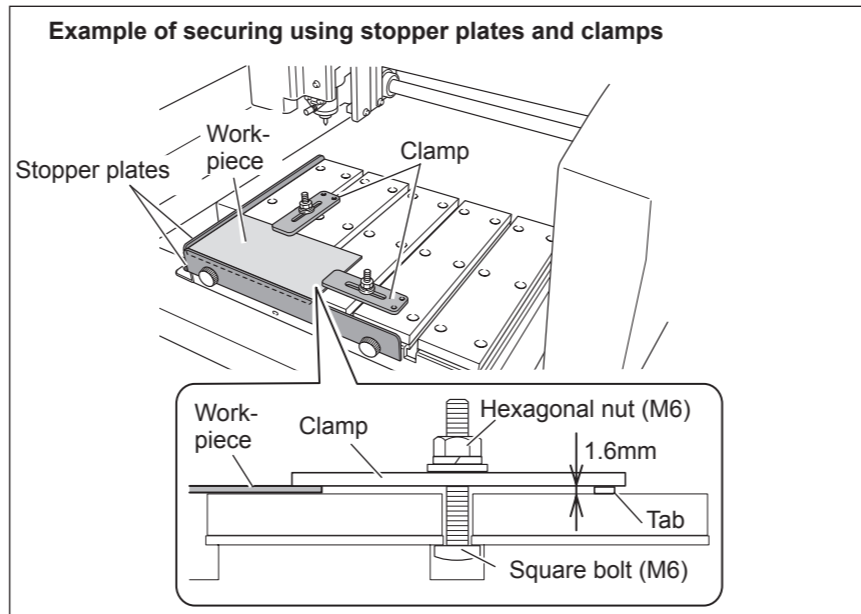
Installing the T-slot Table on the Machine

Detach the standard table, then secure the T-slot table in place. Use the retaining screws for the standard table. Mount the T-slot table oriented as shown in the figure, being careful to position the tabs correctly.



Securing a Workpiece in Place

Clamp the workpiece using the sides of the clamps that have no tab, and tighten the hexagonal nuts to secure in place.



Surface Leveling of the Table

When you want to adjust the planarity (flatness) of the table, carry out surface leveling for the table with the stopper plates and clamps detached. For more details and information on how to perform surface-leveling operations, refer to the user's manual for the machine.

Dimensional Drawings (T-slot table)

