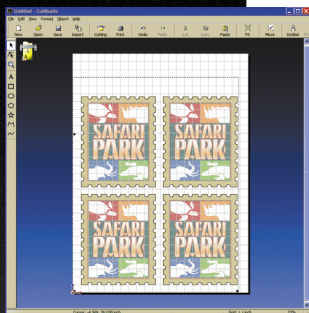


# CAMM-1 SERVO GX-24

Desktop Vinyl Cutter



Use CutStudio™ software to create high-quality, custom print-and-cut jobs utilizing our cutter and your printer.



Contour cut pre-printed labels.



Contour cut pre-printed thermal transfers, ideal for dark apparel.



Cut intricate vehicle graphics with precision and speed.



Shown with optional stand

Speed. Performance. Reliability. Precision handling. The Roland CAMM-1 SERVO GX-24 vinyl cutter is the ultimate companion for print-and-cut jobs with its built-in optical registration system that accurately aligns pre-printed material for contour cutting. The GX-24 comes fully loaded with everything you need to create professional-grade graphics and signs right on your desktop. Under the hood, the digital servomotor drives the cutter with maximum accuracy on anything from reflective vinyl and paint mask, to twill, heat transfer and sandblast material. A built-in curve-smoothing function ensures precision cutting even at top speeds of up to

20 inches per second — 25 percent faster than its predecessor. And when it comes to ease-of-operation, the CAMM-1 SERVO GX-24 wins over even vinyl cutting rookies in seconds. Simply connect the USB interface to your computer, pan through features and functions on the easy-to-read LCD screen, and use the included CutStudio™ drawing software to create incredible graphics for banners, vehicles, store displays, point-of-purchase materials, informational signs, backlit displays and more.

 **Roland**®  
Advanced Solutions Division

## ■ Specifications

# CAMM-1 SERVO GX-24 Desktop Vinyl Cutter

Driving method	Digital control servo motor
Cutting method	Media-moving method
Acceptable media width	2.0" to 27.5" (50 to 700mm)
Maximum cutting area	Width:22.9" (584mm) Length: 984" (25m)
Acceptable tool	Special blade for CAMM-1 series
Maximum cutting speed	20ips all directions (500mm/sec)
Cutting speed	4 to 20ips (10 to 500mm/sec)
Blade force	30 to 250gf
Mechanical resolution	0.000492" (0.0125mm)
Software resolution	0.000984" (0.025mm)
Distance accuracy (1)	Error of less than +/- 0.2% of distance traveled, or +/- 0.004" (+/- 0.1mm), whichever is greater
Repetition accuracy (1) (2)	+/- 0.004" (+/- 0.1mm) or less
Alignment accuracy for printing and cutting when loading printed material (1) (3)	+/- 0.04" (+/- 1mm)
Interface	USB interface (compliant with Universal Serial Bus Specification Revision 1.1) Serial (RS-232C)
Replot memory	800KByte
Instruction system	CAMM-GL III
Power supply	Dedicated AC adapter Input: AC 100 to 240 V +/- 10% 50/60 Hz 1.7A Output:DC 24V, 2.8A
Power consumption	Approx. 30W (including AC adapter)
Acoustic noise level during operation	70 dB(A) or less (according to ISO 7779)
Acoustic noise level during standby	40 dB(A) or less (according to ISO 7779)
Dimensions	33.5" (W) X 12.2" (D) X 9.25" (H) [851mm (W) X 310mm (D) X 235mm (H)]
Weight	35 lb. (16kg)
Packed dimensions	41.2" (W) X 17.75" (D) X 15.2" (H) [1050mm(W) X 450mm (D) X 390mm (H)]
Packed weight	49 lb. (22kg)
Environment	Temperature: 41 to 104 degrees F, (5 to 40 degree C), humidity: 35 to 80% (no condensation)
Included items	AC adapter, power cord, blade, blade holder, separating knife, roller base, tweezers, test-use material, application tape, USB cable, CD-ROM, user's manual
Included software	CutStudio design software with plug-ins for Corel DRAW ®10, 11, 12 and Adobe ® Illustrator ® 9, 10, CS

(1) According to material and cutting conditions as specified by Roland.

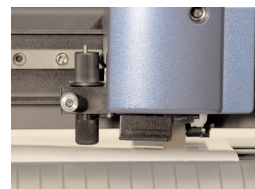
(2) Excluding material expansion and contraction.  
Provided that media length is less than 118" (3000mm).

(3) According to Roland measurement criteria:

- Using the included software from Roland.
- Using a laser or ink-jet printer having a resolution of 720dpi or better.
- Excluding glossy or laminated material.
- Excluding effects of printing distortion due to printer precision and effects of material expansion, contraction, or warping. Depending on the ink (black) employed by the printer used, correct sensing may not be possible.



Large, ergonomically angled, backlit LCD control panel is easy to see while loading media.



Onboard optical system locates registration marks on previously printed material for accurate print-and-cut applications.



Digital servomotor technology ensures the cutter's maximum accuracy and cutting speeds up to 20-inches per second. Easy access USB and serial ports make connectivity a snap.

Roland reserves the right to make changes in specifications, materials or accessories without notice. Your actual output may vary. For optimum output quality, periodic maintenance to critical components may be required. Please contact your Roland dealer for details. No guarantee or warranty is implied other than expressly stated. Roland shall not be liable for any incidental or consequential damages, whether foreseeable or not, caused by defects in such products. All trademarks are the property of their respective owners.



Authorized Dealer:

www.RolandASD.com