

Support Bulletin: RASD-SB00021

Model: Roland GX Pro Series Cutters

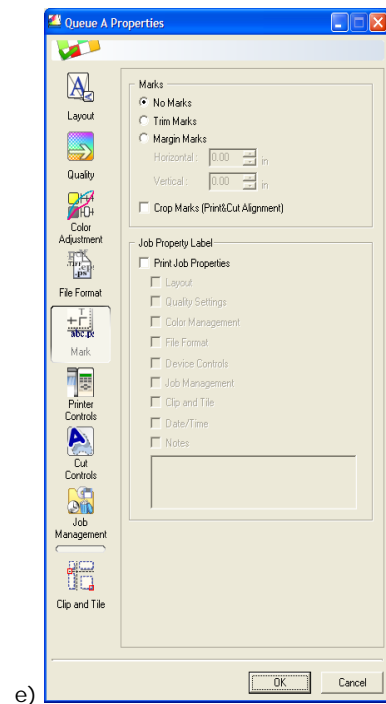
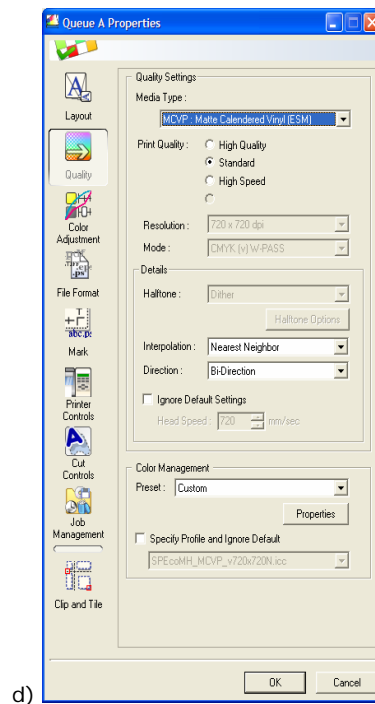
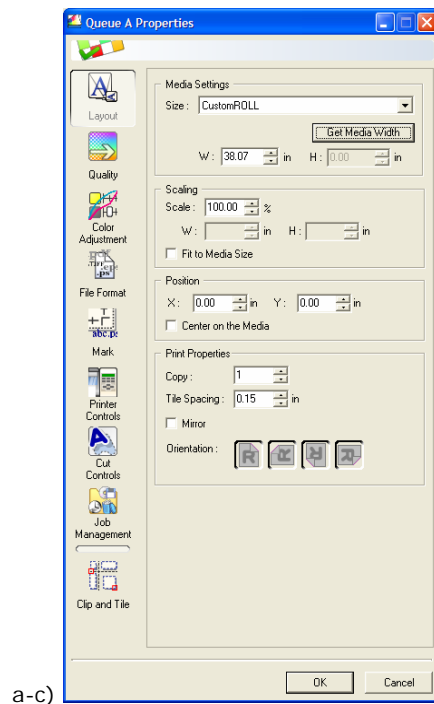
Subject: Print/Cut Workflow for Roland GX Pro & Roland VersaWorks Supported Printer

Date: 7/7/2006

Author: RR

The following document outlines the workflow for print & Cut using a Roland GX Pro Series cutter and Roland VersaWorks supported inkjet printer.

1. Install Roland GX Pro CutStudio Software/Plug-ins and Roland VersaWorks for your Roland supported printer. When installing VersaWorks, ensure that the VersaWorks Printer Driver is also installed.
2. Launch and configure Roland VersaWorks with the following settings.
  - a) Select Edit and go to the Queue Settings. This will open the Properties window.
  - b) Under Layout, set the Media Width by clicking the Get Media Width button.
  - c) Leave scaling at 100%
  - d) Under Quality, Select the Media Type and Print Quality.
  - e) Under Mark, Select No Marks (as this will be done in CutStudio).



Support Bulletin: RASD-SB00021

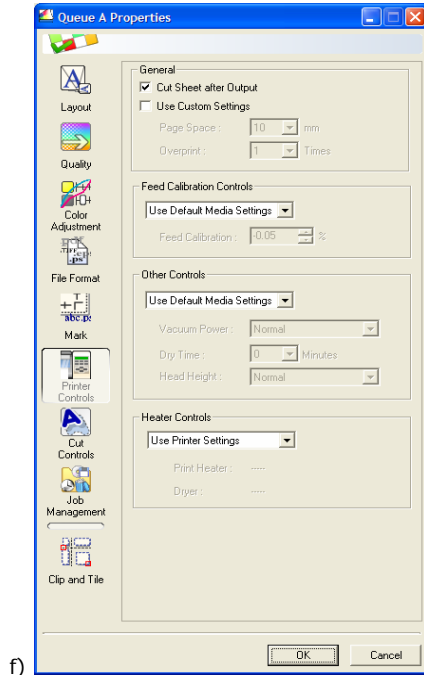
Model: Roland GX Pro Series Cutters

Subject: Print/Cut Workflow for Roland GX Pro & Roland VersaWorks Supported Printer

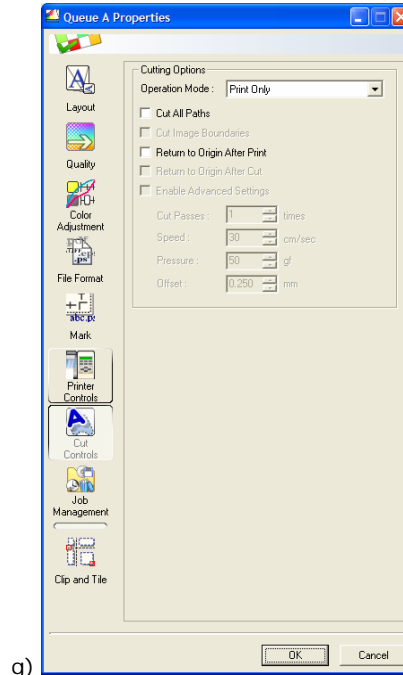
Date: 7/7/2006

Author: RR

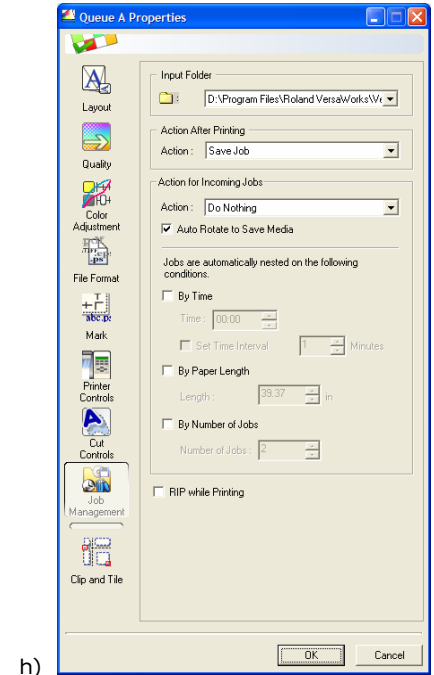
- f) Under Printer Control > General, select Cut Sheet after Output.
- g) Under Cut Controls, set the Operation Mode to Print Only.
- h) Under Job Management, Uncheck the "Auto Rotate To Save Media" option located in the Action for Incoming Jobs section.



f)



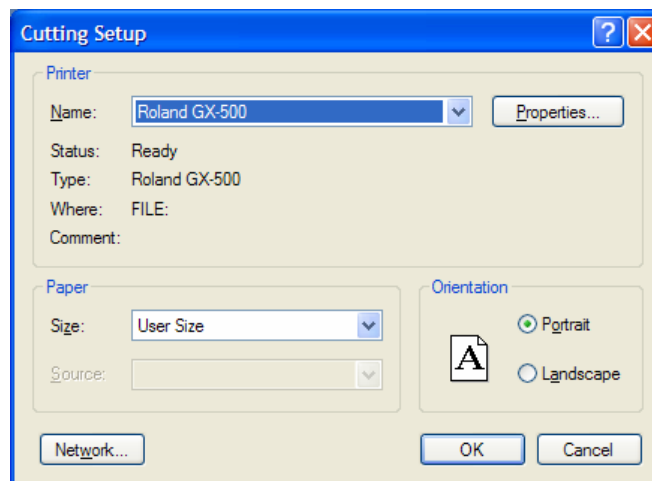
g)



h)

3. Minimize Roland VersaWorks and launch Roland CutStudio.

4. Click File > Cutting Setup. This will open the Cutting Setup window. Select the Roland GX 300, GX-400 or GX-500 as your Printer and click Properties.



Support Bulletin: RASD-SB00021

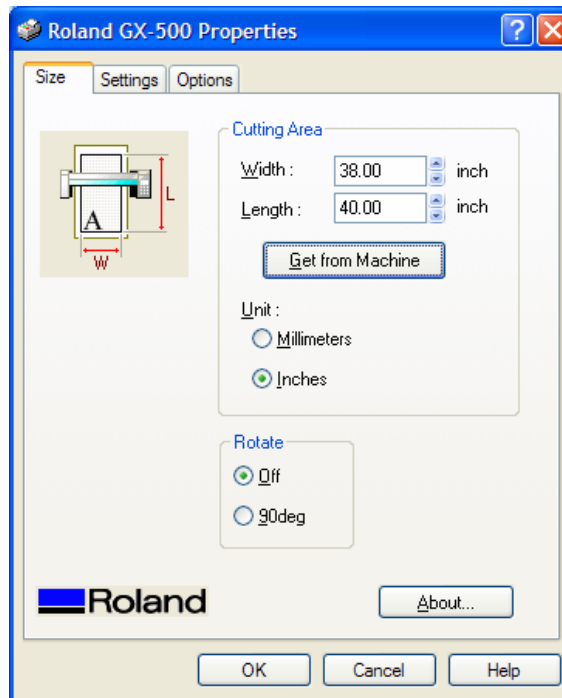
Model: Roland GX Pro Series Cutters

Subject: Print/Cut Workflow for Roland GX Pro & Roland VersaWorks Supported Printer

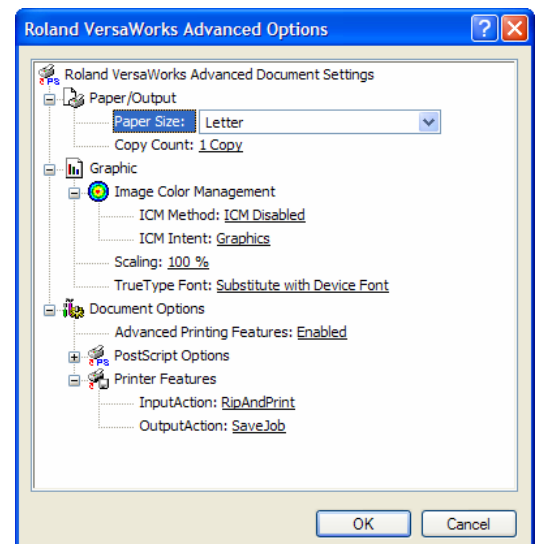
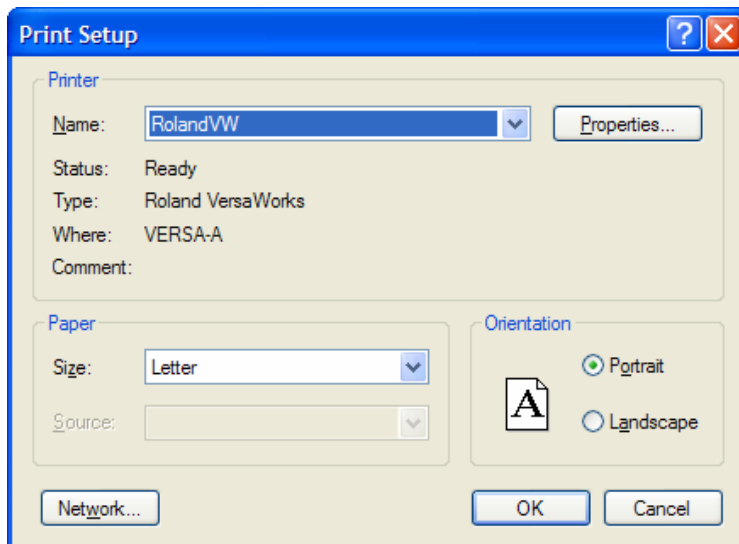
Date: 7/7/2006

Author: RR

- Set the Cutting Area to match that of your loaded media for the printer (ie... Printer = 38"x40", Set Cutter to = 38"x40") and click OK twice. This will bring you to the CutStudio work area.



- Click File > Print & Cut. This will add crop marks to your work area.
- Click File > Set Up the Printer. This will open the Print Setup window. Select the Roland VW Print driver. This is the driver that will send the data direct to VersaWorks. Click on Properties and Advanced. This will open the driver options window.



Support Bulletin: RASD-SB00021

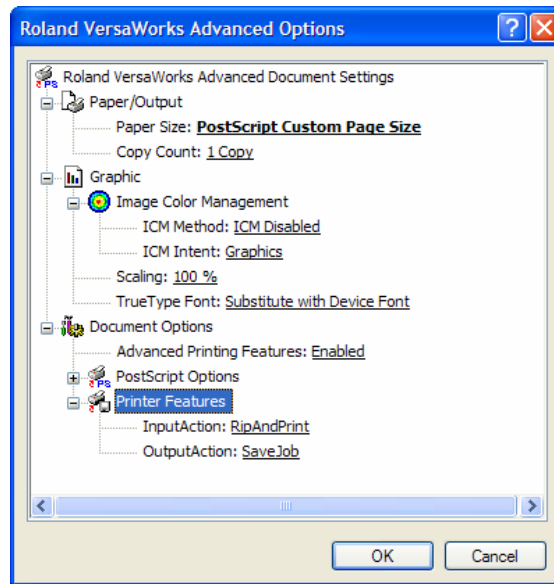
Model: Roland GX Pro Series Cutters

Subject: Print/Cut Workflow for Roland GX Pro & Roland VersaWorks Supported Printer

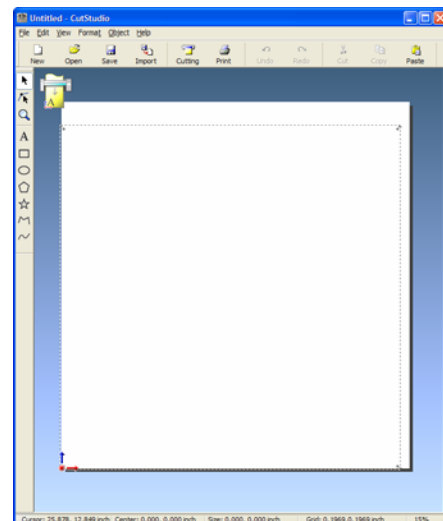
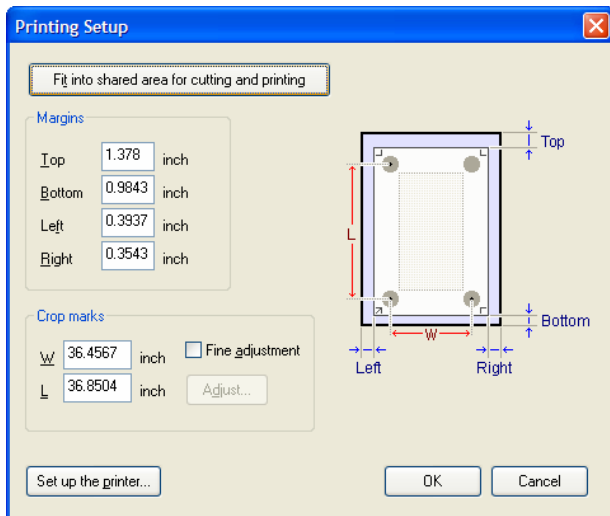
Date: 7/7/2006

Author: RR

8. Under Paper Size, set the size for the media width and length you are working with (ie 38"x40", which is a PostScript Custom Page Size).
9. Under Printer Features, set the Input Action and Output Action to your preference and click OK twice (this will bring you back to the CutStudio work area).



10. Click on File > Printing Setup. This will open the Printing Setup Window.
11. Click on Fit into Shared area for Cutting and Printing and click OK. This will automatically set the crop marks to the proper locations on the page layout. There are minimum margins that have to be used due to the front & rear paper end sensors as well as the left and right pinch rollers.



Support Bulletin: RASD-SB00021

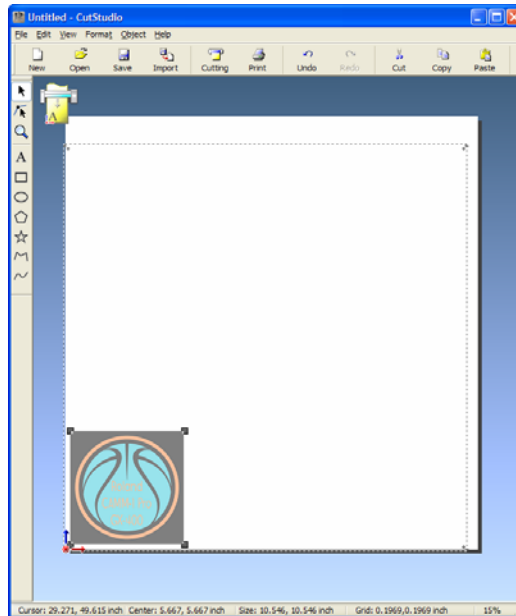
Model: Roland GX Pro Series Cutters

Subject: Print/Cut Workflow for Roland GX Pro & Roland VersaWorks Supported Printer

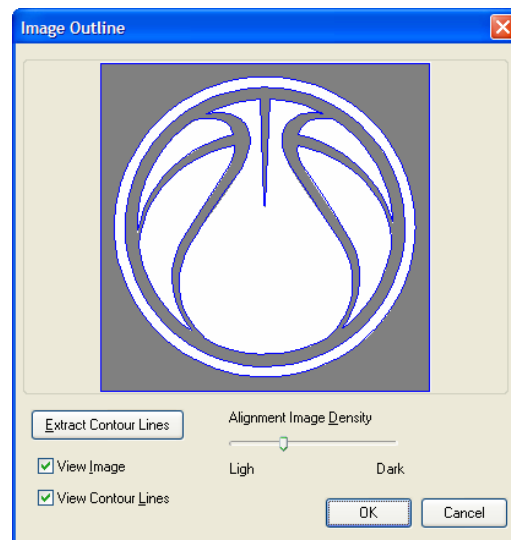
Date: 7/7/2006

Author: RR

- 
12. Import your graphic image file. This file must be in JPG or BMP format and must be an RGB file. CMYK formatted images are not supported by Roland CutStudio.



13. Set the image to the desired size prior to generating the image outline for cutting.
14. Right Click on the image and click Image Outline. This will bring up the Image Outline window where you can create the vector cut lines. Adjust the Alignment Image Density to your preference and click Extract Contour Lines to generate the cut lines (which will show in blue) and click OK.



15. If you need to delete any of the vector lines, you can click on Object and Break Polyline. This will allow you to edit the vector lines as needed. Once this is done, you can select the vector lines that remain and Integrate Polyline via the Object menu.

Support Bulletin: RASD-SB00021

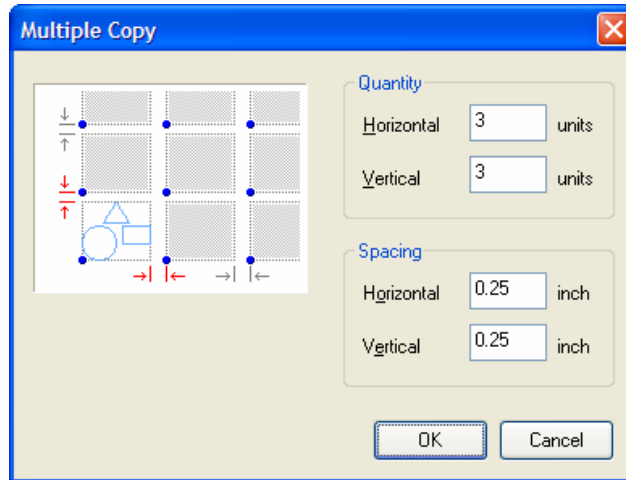
Model: Roland GX Pro Series Cutters

Subject: Print/Cut Workflow for Roland GX Pro & Roland VersaWorks Supported Printer

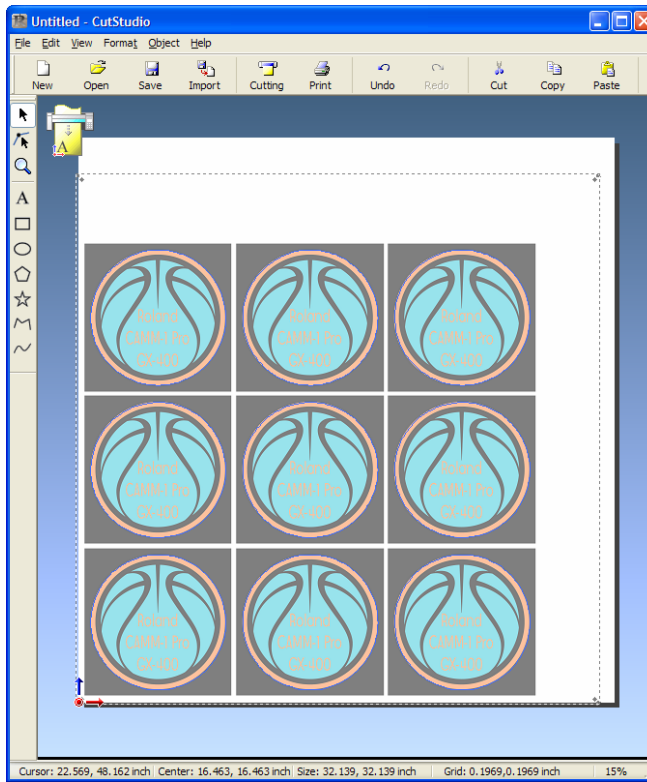
Date: 7/7/2006

Author: RR

16. To make multiple copies of the image, sweep select the graphic along with the contour line and click Edit > Multiple Copy and set the Quantity and Spacing and click OK.



17. The work area should now show the multiple copies on screen.



Support Bulletin: RASD-SB00021

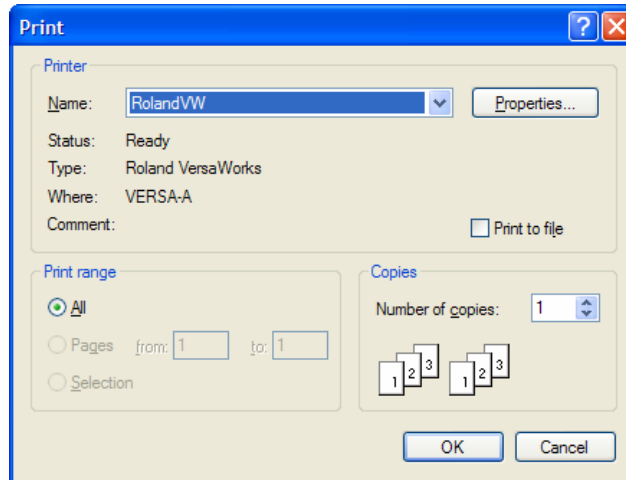
Model: Roland GX Pro Series Cutters

Subject: Print/Cut Workflow for Roland GX Pro & Roland VersaWorks Supported Printer

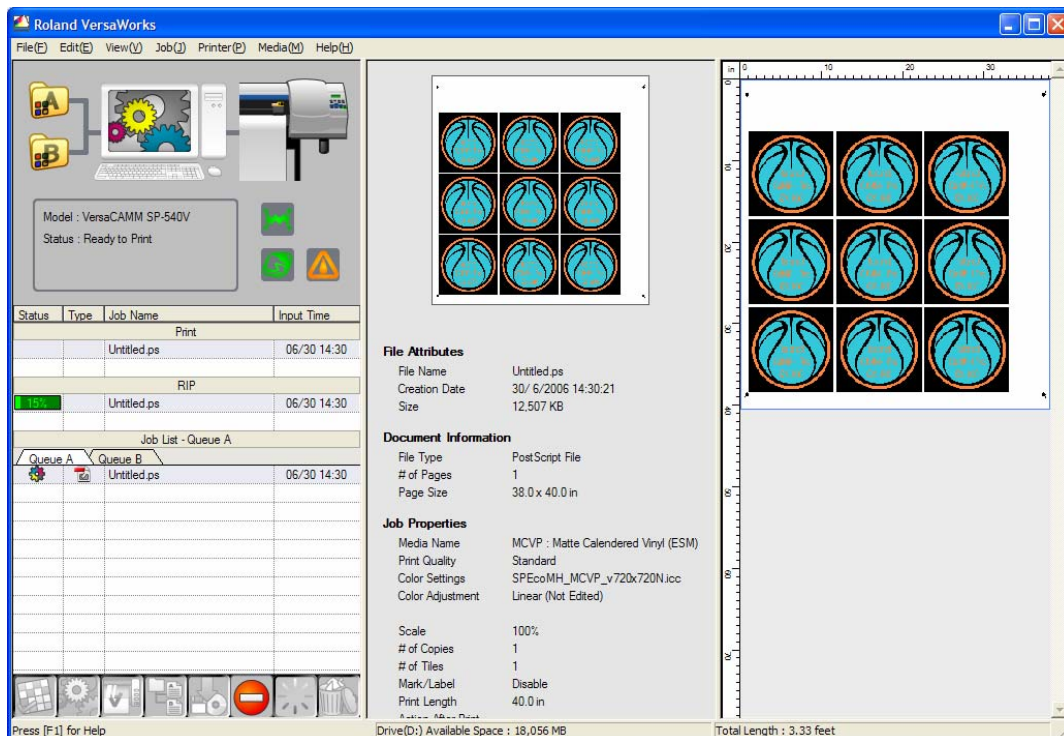
Date: 7/7/2006

Author: RR

18. Click on File > Print. The Print dialog box opens and the printer name should be RolandVW. Click OK to send the file to your VersaWorks supported printer.



19. Once the file is done spooling, it will show up in VersaWorks and process based on the PostScript Driver and VersaWorks settings.



Support Bulletin: RASD-SB00021

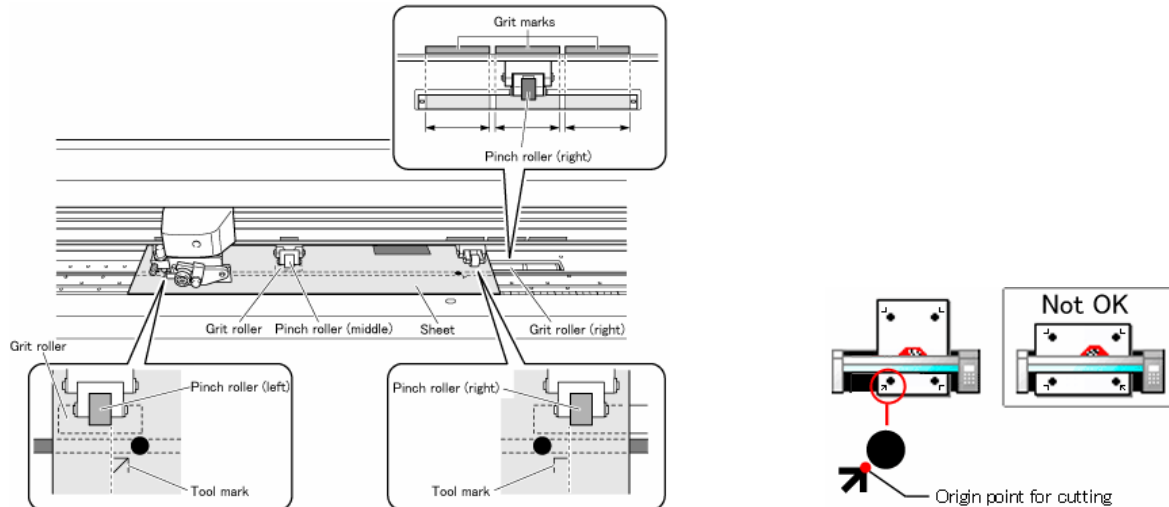
Model: Roland GX Pro Series Cutters

Subject: Print/Cut Workflow for Roland GX Pro & Roland VersaWorks Supported Printer

Date: 7/7/2006

Author: RR

20. Once the file has printed, load the printed material into the cutter. Ensure that the crop marks are positioned just over the Cutter Protection Strip on the cutter and that the angle between the left and right crop mark locations are not over 5 degrees. If so, an error will occur and the media would need to be reloaded.



21. Select the Sheet Type as Piece or Roll and then press the Enter key on the cutter control panel. The machine will load and set the media for cutting.
22. Once the media is set, click File > Cutting (ensure that the GX Pro model is selected) and click OK to output the cut file to the cutter.