

Eco-SOL MAX Ink Conversion Guide

Overview

Model Name	Please follow the Instructions for:
SJ-1045* SJ-745 SJ-645 SC-545 SC-545+W SP-540V SP-300V	VersaWork
SJ-1000 SJ-740EX SJ-640EX SJ-540EX SC-540EX SP-300	ColoRIP
SJ-740 SJ-540 SC-540	ColoRIP
SC-500 SJ-500 SJ-600	ColorChoice

*If an IS-1000 is installed, please review the IS-1000 Eco-SOL MAX guide

VersaWorks Instructions

1. Update Roland VersaWorks
 - a. Updating VersaWorks Automatically
 - b. Updating VersaWorks Manually
 - c. Updating VersaWorks without a internet connection
2. Check the firmware version of the unit.
3. Update the firmware on the printer with Roland VersaWorks
4. Convert the unit to Eco-SOL MAX inks.

ColoRIP Instructions**

1. Check the firmware version of the printer.
2. Update the firmware on the printer with the Roland Firmware Updater Application
3. Converting the unit to Eco-SOL MAX inks.
4. Download Eco-SOL MAX ICC profiles from the Roland DGA website.

**The ColoRIP instructions for updating firmware and converting the unit to Eco-SOL MAX inks can be used for any Roland unit not run with Roland VersaWorks.

ColorChoice Instructions

1. Check the firmware version of the printer.
2. Update the firmware on the printer with the Roland Firmware Updater Application
3. Convert the unit to Eco-SOL MAX inks.
4. Download Eco-SOL MAX ICC profiles from the Roland DGA website

VersaWork Instructions

1a. Updating Roland VersaWorks Automatically

Follow these step-by-step instructions to implement the **Roland@NET** automated software update service. It is important you complete each step in sequence to ensure proper installation.

Prerequisites

1. Roland VersaWorks must be installed on a computer with a live internet connection.
2. Roland VersaWorks must have a current connection to a Roland printer.

Performing a VersaWorks Update

1. Start Roland VersaWorks and navigate to **Edit > Preferences**.
2. In the Preferences window, select the **Roland@NET** tab.
3. Check the **Download Updates Automatically and Notify** option and select the Frequency you prefer for receiving updates. We recommend that you set this to Every Month or Every Week.
4. In **Update Options**, check **Download Media and Color Profiles** and select **All Available Updates**.
5. Click **OK**. Note that your first **Roland@NET** update will not occur immediately. This point marks the beginning of an update cycle, and the program will download your first update after the interval of time specified in **Frequency** has passed. For an immediate update, follow the instructions in the **Updating Roland VersaWorks Manually** section below.

1b. Updating Roland VersaWorks Manually

If you are unable or prefer not to use the **Roland@NET** service, you can obtain software updates and current media profiles through a manual update process. Follow these step-by-step instructions to complete this process. It is important you complete each step in sequence to ensure proper installation.

Prerequisites

1. Roland VersaWorks must be installed on a computer with a live internet connection.
2. Roland VersaWorks must have a current connection to a Roland printer.

Performing a VersaWorks Update

1. Close **Roland VersaWorks**.
2. Navigate to **Start > All Programs > Roland VersaWorks** and select **Online Update**.
3. Open the **Update** Settings window by navigating to **Settings > Preference**.
4. In **Update Options**, check **Download Updates for Media and Color Profiles** and select **All Updates**.
5. Click **OK**.
6. Click **Check for Update**.
7. If an update is available, the **Select Updates** window is displayed. Make sure all available options are checked in this window.
8. Click **Update** and the software will start downloading the updates. Please note that a DOS window will appear. Depending on the speed of your computer, it may be displayed

for a few minutes. Please wait until it closes by itself or a message "Press any key to continue" is displayed.

9. Click **OK** once the download is completed and the software will be automatically updated.

1c. Updating VersaWorks without an Internet Connection

Prerequisites

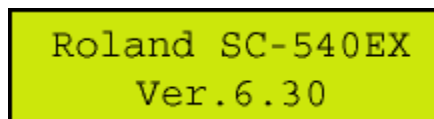
1. Roland VersaWorks must be installed and have a current connection with a Roland printer.
2. The RVWUpdater151 file must be downloaded from the R-Net website and unzipped.

Performing a VersaWorks Update

1. Open the **RVWUpdater151** folder and double-click the **LocalUpdater.exe** to install.
2. **Offline Updater** dialog appears.
3. Click the **Check for Update** button.
4. VersaWorks will start updating automatically.

2. Check the firmware version of the unit

1. Turn on the unit's main power switch. (This power switch will be located near the power cord.)
2. When turn on the sub power switch of the unit (Found on the front panel of the unit), firmware version will be displayed on the display panel of the unit during start-up.



Firmware versions required to run Eco-SOL MAX inks:

Model Name	Required Firmware
SP-540V SP-300V	Ver.5.90 and above
SJ-745EX SJ-645EX SC-545EX SC-545EXW	Ver.6.60 and above
SJ-1045	Ver.1.70 and above

3. How to update the firmware on the printer with Roland VersaWorks

The following steps will allow you to perform a firmware update using Roland VersaWorks. It is important you complete each step in sequence to ensure proper installation.

Prerequisites

1. Make sure you have downloaded the current firmware upgrade from the Roland DGA website. This update is posted in the support section of the Roland DGA website in .exe format and will need to be extracted.
2. Make sure you have the current version of Roland Versaworks and that it is properly communicating with your device.

Performing Firmware Update

1. Turn the **main power** of the unit on. (The **main power** switch will be located near the power cord.)

2. Hold down the **Up**, **Left** and **Down** arrow keys while pressing the **sub-power** button to enter the Firmware mode. (The **sub-power** button is found on the front panel of the printer.)
3. The printer will display “**version up sure**”; press the **Enter** key.
4. The display will then read “**waiting**” indicating it is ready to receive firmware.
5. Launch Roland Versaworks.
6. Navigate to the top menu in Roland Versaworks and select **Printer**.
7. Then select **Send Native File**.
8. The open window will pop up and then change the type of file to **Firmware Update Files**.
9. Locate and select the firmware or .rfw file that you downloaded and extracted.
10. Click on **Open** to start the update.
11. The file will be sent to the printer, updating the firmware.
12. The printer display will show “**erasing**” then “**writing**” and then “**complete**”.
13. Once the display reads “**complete**” you may then power down the printer and restart it.
14. Make sure when the printer powers back up to check the firmware version to confirm that it was completely installed.
15. You have now completed the firmware update.

4. Convert the unit to Eco-SOL MAX:

The following steps will allow you to convert a Roland unit to Eco-SOL MAX inks from Eco-SOL or SOL inks. It is important you complete each step in sequence to ensure proper installation.

Prerequisites

1. Make sure the Roland unit has the firmware version required to run Eco-SOL MAX inks.
2. It is not possible to use Eco-SOL and Eco-SOL MAX inks in the same unit. You must convert all colors to Eco-SOL MAX. Please have the need Eco-SOL MAX cartridges ready.

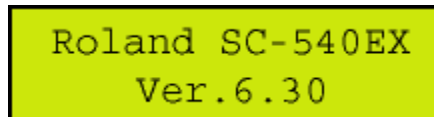
Performing the EcoSOL MAX Update

1. Turn the **main power** of the unit on. (The **main power** switch will be located near the power cord.)
 2. Turn on the units **sub-power**. (The sub power button is found on the front panel of the printer.)
 3. Press the “**Menu**” button on the front panel to enter the users menu.
 4. Using the **Down** arrow key on the front panel, navigate the users menu until “**Ink Control**” is shown on the units display.
 5. Press the **Right** arrow to enter the “**Ink Control**” sub-menu.
 6. Using the **Down** arrow key on the front panel, navigate the sub-menu until “**Change Ink Set**” is shown on the units display.
 7. Press the **Right** arrow key to enter the “**Change Ink Set**” sub-menu.
 8. Using the **Down** arrow, navigate the menu till “**E-Sol MAX 4Color**” is shown on the display.
- * The display will be different depending on the unit model and ink set type.
9. Press the **Enter** button to begin the ink switch process.
 10. The unit’s display will then walk the user through the needed steps complete the ink switch process. This process will take less than 5 minutes.
 11. Once the automatic ink switch procedure is finished, the unit will be ready to print.

ColoRIP Instructions

1. Check the firmware version of the printer.

1. Turn on the printer's Main Power Switch.
2. When turn on the Sub Power Switch of the printer, firmware version of the printer is displayed on the display panel.



Firmware versions required to run Eco-SOL MAX inks:

Model Name	Required Firmware
SP-300	Ver.5.90 and above
SJ-740EX SJ-640EX SJ-740 SC-540 SC-540EX	Ver.6.60 and above
SJ-1000	Ver.1.70 and above

2. Update the firmware on the printer with the Roland Firmware Updater Application

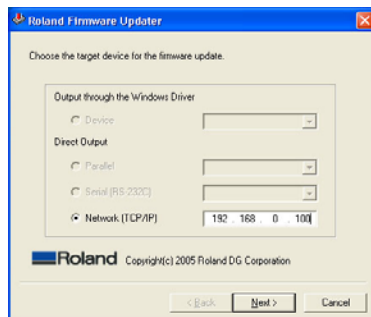
The following steps will allow you to perform a firmware update with the Roland Firmware Updater Application. It is important you complete each step in sequence to ensure proper installation.

Prerequisites

1. Make sure you have downloaded the current Firmware Update Application from the Roland DGA website. This application is posted in the support section of the Roland DGA website and will need to be extracted before it is ready to use.

Performing Firmware Update

1. Turn the **main power** of the unit on. (This power switch will be located near the power cord.)
2. Hold down the **Up**, **Left** and **Down** arrow keys while pressing the **sub-power** button to enter the Firmware mode. (The sub power button is found on the front panel of the printer.)
3. The printer will display "**version up sure?**" or "**are you sure?**" press the **Enter** key to continue.
4. The display will then read "**waiting**" indicating it is ready to receive firmware.
5. Launch the **Roland Firmware Updater** application.
6. Enter the units TCP/IP address and then click "**Next**". If this is a SP-300 or SP-300V unit, select SP-300 in the menu next to the option to "Output though a Windows Driver".



7. Click **“Next”**
8. Click **“Yes”**
9. The Roland Firmware Updater Application will start to transfer firmware to the unit.
10. Click **“Finish”** to close the application.
11. The Roland unit's display will show **“erasing”** then **“writing”** and then **“complete”**.
12. Once the display reads **“complete”** you may then power down the unit and restart it.
13. Make sure when the printer powers back up to check the firmware version to confirm that it was completely installed.
14. You have now completed the firmware update.

3. Convert the unit to Eco-SOL MAX inks:

The following steps will allow you to convert a Roland unit to Eco-SOL MAX inks from Eco-SOL or SOL inks. It is important you complete each step in sequence to ensure proper installation.

Prerequisites

1. Make sure the Roland unit has the firmware version required to run Eco-SOL MAX inks.
2. It is not possible to use Eco-SOL and Eco-SOL MAX inks in the same unit. You must convert all colors to Eco-SOL MAX. Please have the need Eco-SOL MAX cartridges ready.

Performing the EcoSOL MAX Update

1. Turn the **main power** of the unit on. (This power switch will be located near the power cord.)
 2. Turn on the units **sub-power**. (The **sub-power** button is found on the front panel of the printer.)
 3. Press the **“Menu”** button on the front panel to enter the users menu.
 4. Using the **Down** arrow key on the front panel, navigate the users menu until **“Ink Control”** is shown on the units display.
 5. Press the **Right** arrow to enter the **“Ink Control”** sub-menu.
 6. Using the down arrow key on the front panel, navigate the sub-menu until **“Change Ink Set”** is shown on the units display.
 7. Press the **Right** arrow key to enter the **“Change Ink Set”** sub-menu.
 8. Using the **Down** arrow, navigate the menu till **“E-Sol MAX 4Color”** is shown on the display.
- * The display will be different depending on the unit model and ink set type.
9. Press the **Enter** button to begin the ink switch process.
 10. The unit's display will then walk the user through the needed steps complete the ink switch process. This process will take less than 5 minutes.
 11. Once the automatic ink switch procedure is finished, the unit will be ready to print.

4. Downloading ICC profiles from the Roland DGA website.

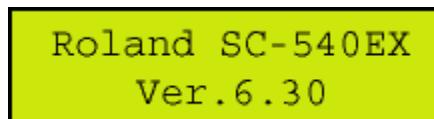
Please follow this link to download the newest available ICC profiles from Roland DGA.

<http://www.rolanddga.com/profiles/wizard>

ColorChoice Instructions

1. Check the firmware version of the printer.

1. Turn on the printer's Main Power Switch.
2. When turn on the Sub Power Switch of the printer, firmware version of the printer is displayed on the display panel.



Firmware versions required to run Eco-SOL MAX inks:

Model Name	Required Firmware
SJ-500 SJ-600	Ver.5.3 and above
SC-500	Ver.4.3 and above

2. Update the firmware on the printer with the Roland Firmware Updater Application

The following steps will allow you to perform a firmware update with the Roland Firmware Updater Application. It is important you complete each step in sequence to ensure proper installation.

Prerequisites

1. Make sure that you have a connection between the computer and the printer. This solution will work with a parallel or network connection. Parallel cords should not be longer than 10ft.
2. Make sure you have downloaded the current firmware updater application from the Roland DGA website. This application is posted in the support section of the Roland DGA website in .zip format and will need to be extracted before it is ready to use.

Performing Firmware Update

15. Turn the **main power** of the unit on. (This power switch will be located near the power cord.)
16. Hold down the **Up**, **Left** and **Down** arrow keys while pressing the **sub-power** button to enter the Firmware Updating mode. (The sub power button is found on the front panel of the printer.)
17. The printer will display "**version up sure?**" or "**are you sure?**" press the **Enter** key to continue.
18. The display will then read "**waiting**" indicating it is ready to receive firmware.
19. Launch the **Roland Firmware Updater** application.
20. You must select to use the **Parallel** or if this unit has a TCP/IP converter, **Network (TCP/IP)** connection.



21. If the **Network (TCP/IP)** connection is being used, enter the units TCP/IP address and then click **"Next"**.
22. Click **"Next"**
23. Click **"Yes"**
24. The Roland Firmware Updater Application will start to transfer firmware to the unit.
25. Click **"Finish"** to close the application.
26. The Roland unit's display will show **"erasing"** then **"writing"** and then **"complete"**.
27. Once the display reads **"complete"** you may then power down the unit and restart it.
28. Make sure when the printer powers back up to check the firmware version to confirm that it was completely installed.
29. You have now completed the firmware update.

3. Converting the unit to Eco-SOL MAX inks:

The following steps will allow you to convert a Roland unit to EcoSOL MAX inks from EcoSOL or SOL inks. It is important you complete each step in sequence to ensure proper installation.

Prerequisites

1. Make sure the Roland unit has the firmware version required to run Eco-SOL MAX inks.
2. It is not possible to use Eco-SOL and Eco-SOL MAX inks in the same unit. You must convert all colors to Eco-SOL MAX. Please have the need Eco-SOL MAX cartridges ready.

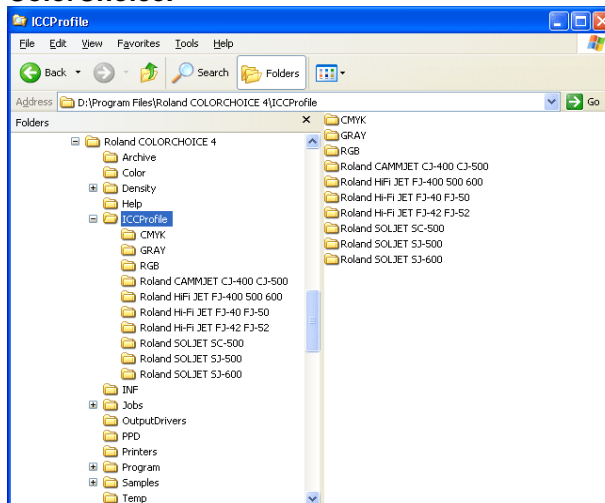
Performing the EcoSOL MAX Update

1. Turn the **main power** of the unit on. (This power switch will be located near the power cord.)
2. Turn on the units **sub-power**. (The **sub-power** button is found on the front panel of the printer.)
3. Press the **"Menu"** button on the front panel to enter the users menu.
4. Using the **Down** arrow key on the front panel, navigate the users menu until **"Ink Control"** is shown on the units display.
5. Press the **Right** arrow to enter the **"Ink Control"** sub-menu.
6. Using the down arrow key on the front panel, navigate the sub-menu until **"Change Ink Set"** is shown on the units display.
7. Press the **Right** arrow key to enter the **"Change Ink Set"** sub-menu.
8. Using the **Down** arrow, navigate the menu till **"E-Sol MAX LcLm"** is shown on the display.
9. Press the **Enter** button to begin the ink switch process.
10. The unit's display will then walk the user through the needed steps complete the ink switch process. This process will take less than 5 minutes.
11. Once the automatic ink switch procedure is finished, the unit will be ready to print.

4. Downloading ICC profiles from the Roland DGA website.

Please follow this link to download the newest available ICC profiles from Roland DG
<http://www.rolanddga.com/profiles/wizard>

1. Open the **ICC Profile folder** of **Roland ColorChoice**. Copy the downloaded ICC profiles for ECO-SOL MAX ink onto the folder of the name of the model that you are using.
2. Launch **Roland ColorChoice**.



3. Enter the **Setup → Setup Properties**
4. In the **Setup Properties** window, go to the **Print** tab.
5. In the Media select **Other**
6. Select the ICC profile you wish to use in the **ICC Output Profile → Profile**.
7. **Roland ColorChoice** will now be ready to use.