

Support Bulletin: RASD-SB00044

Model: Roland MDX-15/20, MDX-40, & JWX-10

Subject: Delete or Cancel Job Sent to Machine

Date: 10/25/2007

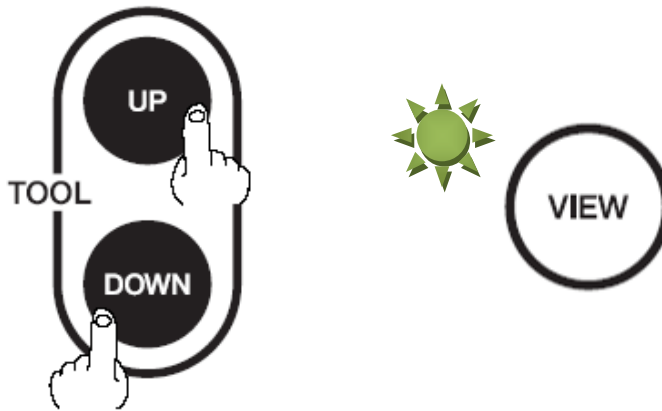
Author: PG

The following document covers deleting or canceling a job that has been already sent to the machine. The procedure is the same for the MDX-15/20 & 40, JWX-10 and covers clearing the machine and computer.

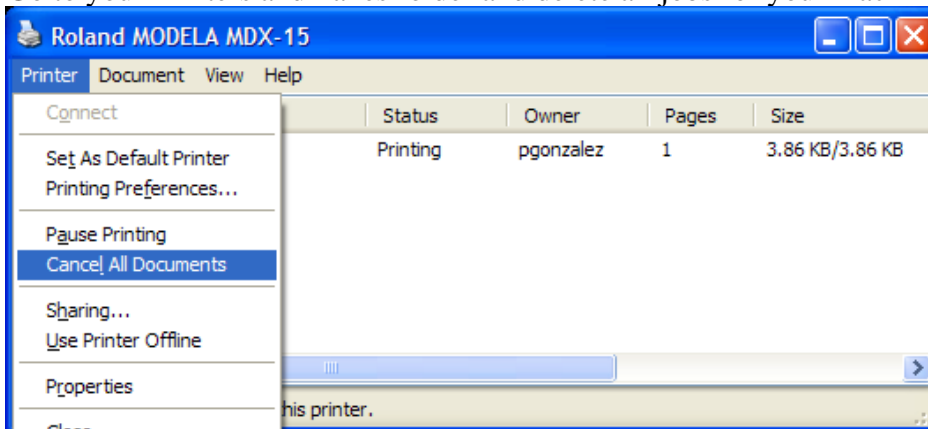
1. Press the view button and wait until the view light stops flashing. It will stop flashing when the machine is in view mode and not moving.



2. Press “tool up” and “tool down” at the same time. The view light will begin to flash indicating it is dumping or removing the program.



3. Go to your Printers and Faxes folder and delete all jobs for your machine.



Support Bulletin: RASD-SB00044

Model: Roland MDX-15/20, MDX-40, & JWX-10

Subject: Delete or Cancel Job Sent to Machine

Date: 10/25/2007

Author: PG

---

4. When the view light stops flashing, the buffer is clear. (This may take a few minutes on the MDX-15/20)



5. Press the view light again to bring it back to the origin point.



6. The machine is now ready for the next job.