
MDX-40

Upgrading Procedure

Table of Contents

1. Preparation	2
1-1 Contents of Upgrade Package	2
2. Updating the Internal Program	3
2-1 Updating the Internal Program	3
2-2 If an Error Message Appears	9
3. Installing the Windows Driver	12
3-1 Windows XP	12
3-2 Windows Vista	13
3-3 What to Do If Installation is Impossible	15
- Windows XP	15
- Windows Vista	17
4. Installing the VPanel	19
4-1 Installing the VPanel for MDX-40A	19

1. Preparation

1-1 Contents of Upgrade Package

1. MDX40Updater.exe

- An application software that updates MDX-40 to MDX-40A.

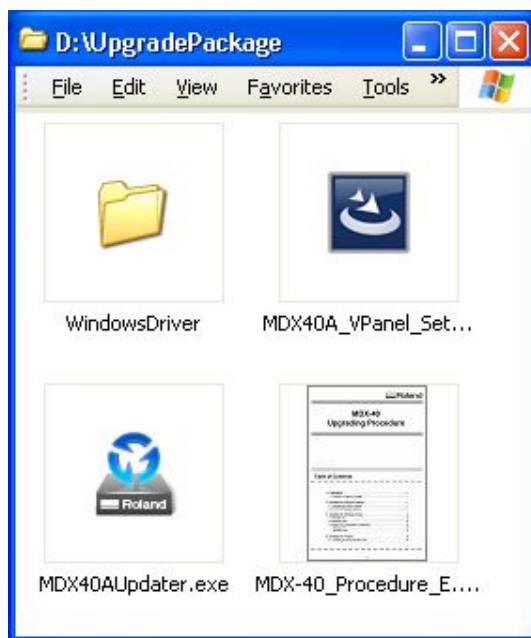
2. WindowsDriver

- A folder that contains the files for installing the Windows Driver for MDX-40A.

3. MDX40A_VPanel_Setup.exe

- An application for installing the VPanel for MDX-40A.

4. MDX-40_Procedure_E.pdf (this document)

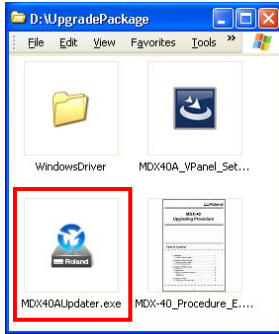


2. Updating the Internal Program

2-1 Updating the Internal Program

Log on to Windows as “Administrators”.

1 Launching MDX40Updater.exe

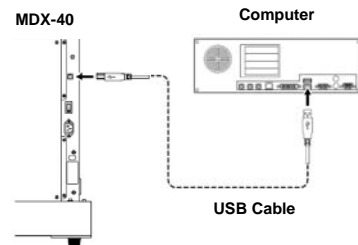


Launch MDX40Updater.exe.

2 Preparing the machine 1



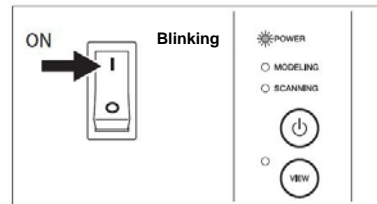
Connect the computer and MDX-40 with a USB cable.



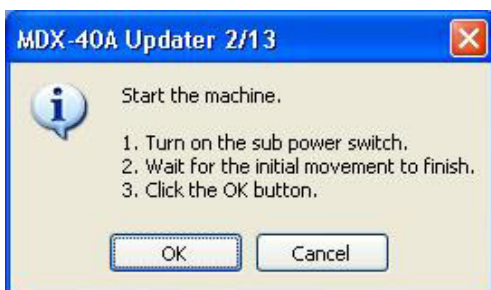
Turn on the main power switch and wait for the [POWER] light to come on.



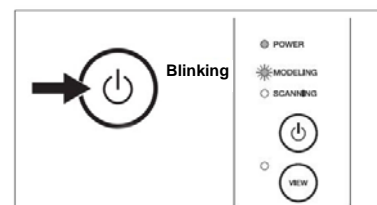
Click the [OK] button.

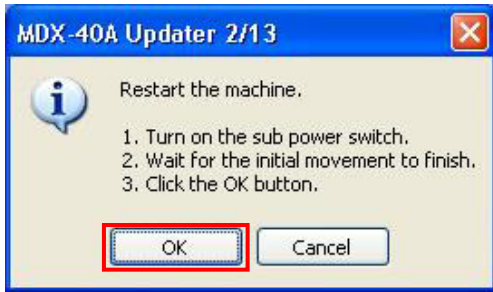


3 Preparing the machine 2



Turn on the sub power switch and wait for the initial movement to finish.





Click the [OK] button.

4 Confirming the version

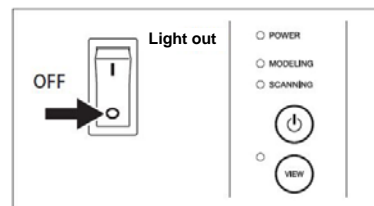


Click the [Yes] button after confirming the version.

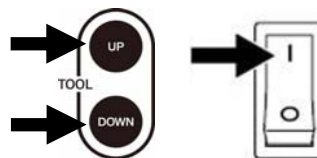
5 Setting up the machine for update mode



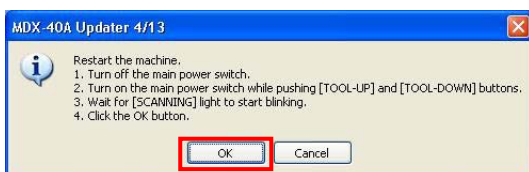
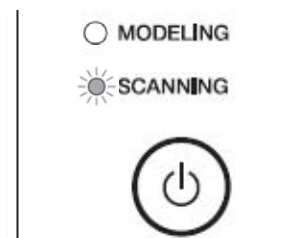
Turn off the main power switch.



Turn on the main power switch while pushing the [TOOL-UP] and [TOOL-DOWN] buttons.



Confirm that the [SCANNING] light is blinking.



Click the [OK] button.

6 Before sending Program 1/2

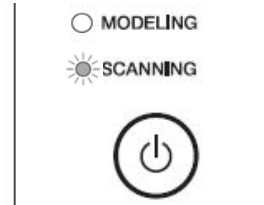


Confirm the message on the dialog and click the [OK] button. It takes about ten seconds to finish sending the program.

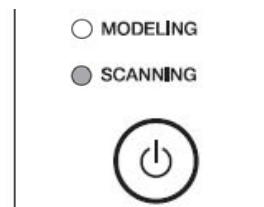
7 Sending Program 1/2



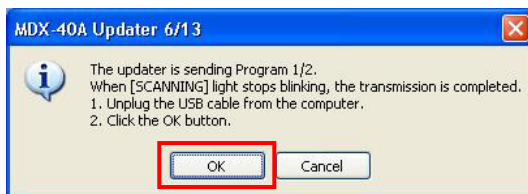
Blinking [SCANNING] light means the transmission is now in progress.



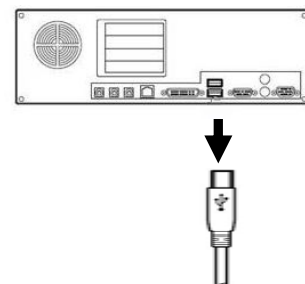
When the [SCANNING] light stops blinking, the transmission is completed.



Unplug the USB cable from the computer.



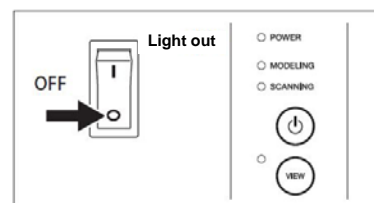
Click the [OK] button.



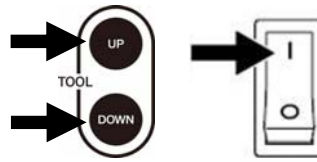
8 Setting up the machine for update mode



Turn off the main power switch.



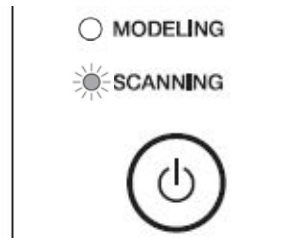
Turn on the main power switch while pushing the [TOOL-UP] and [TOOL-DOWN] buttons.



Confirm that the [SCANNING] light is blinking.



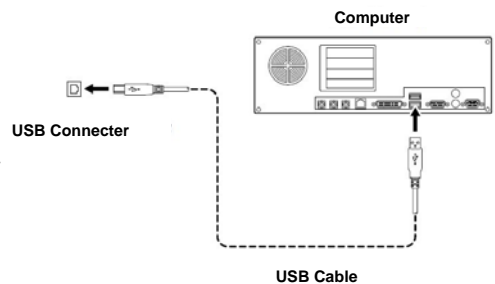
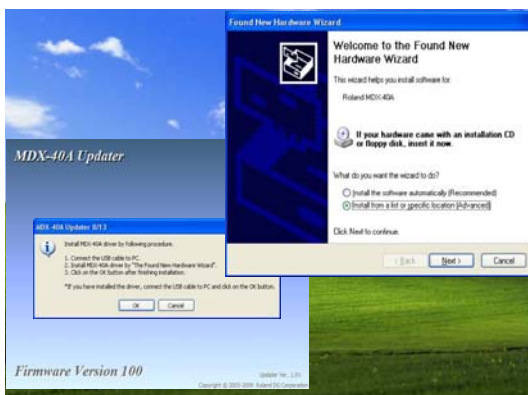
Click the [OK] button.



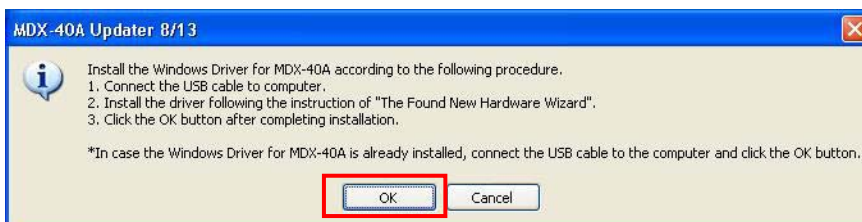
9 Installing the Windows Driver



Connect the USB cable to the computer.



"Found New Hardware Wizard" appears as in the left picture. For Windows XP, refer to page 12 of this manual to install the Windows Driver. For Windows Vista, refer to page 13 of this manual to install the Windows Driver.



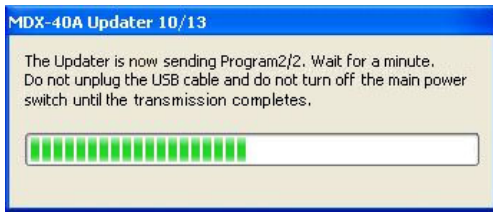
Click the [OK] button.

10 Before sending Program 2/2



Click the [OK] button.

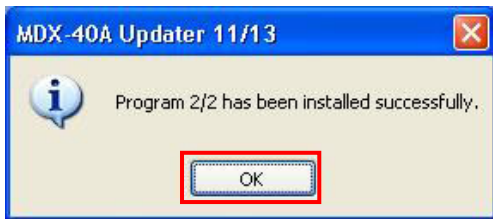
11 Sending Program 2/2



It takes about 50 seconds to finish sending the program.

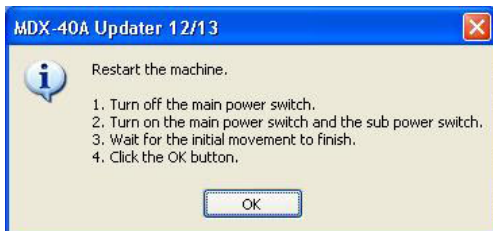
Do not unplug the USB cable and do not turn off the main power switch until the transmission is completed.

12 Finishing sending Program 2/2

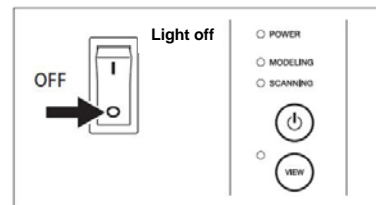


Click the [OK] button.

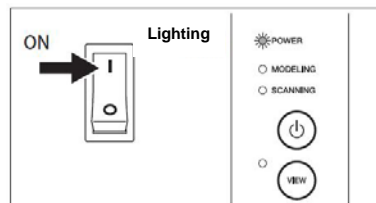
13 Restarting the machine



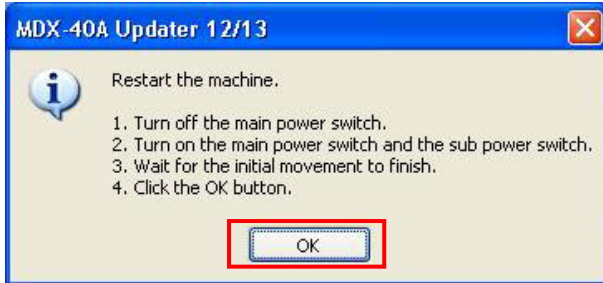
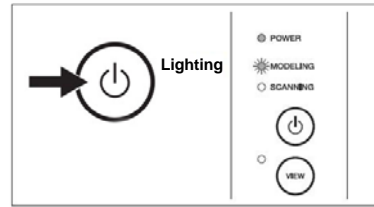
Turn off the main power switch.



Turn on the main power switch.

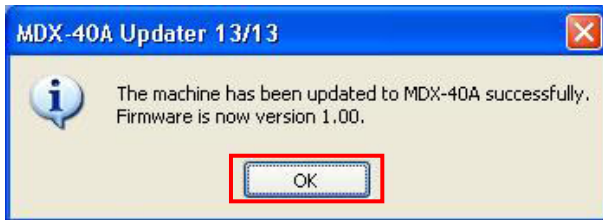


Turn on the sub power switch.



Click the [OK] button.

14 Completion of update

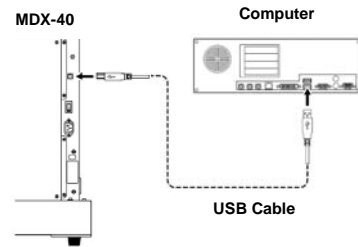


The machine has been updated to MDX-40A successfully. Click the [OK] button to exit the application.

2-2 If an Error Message Appears

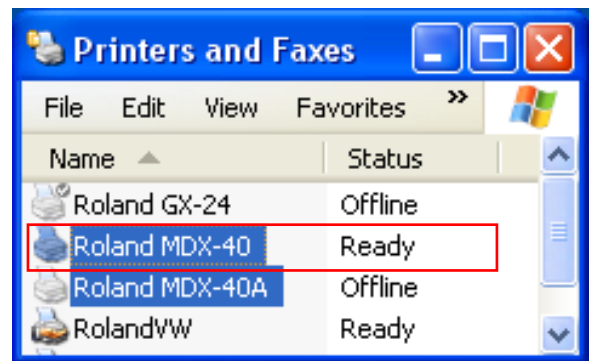


The updater cannot communicate with MDX-40 or MDX-40A.
Check the connection of the USB cable.



How to check the communication

Open "Printers and Faxes" in the "Control Panel". The status of printers are shown in the "Printer and Faxes" dialog. Confirm that MDX-40 or MDX-40A is in "Ready" status. If the status of MDX-40 or MDX-40A is "Offline", perform the followings.



If this message appears in step 5, confirm that MDX-40 is in "Ready" status.

If this message appears in step 8 or 13, confirm that MDX-40A is in "Ready" status.

In the case of "Offline"

If this message appears in step 5 or 8, confirm that MDX-40 or MDX-40A is in the updating mode (refer to page 4).

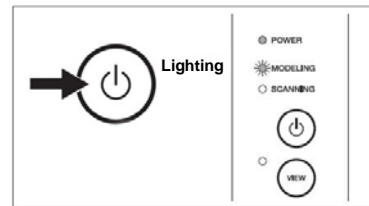
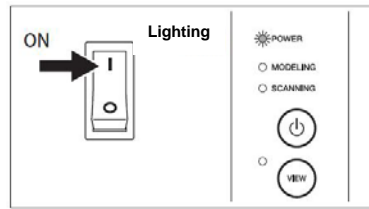
If this message appears in step 13, confirm that MDX-40 or MDX-40A is in the normal mode (refer to page 7 and 8).



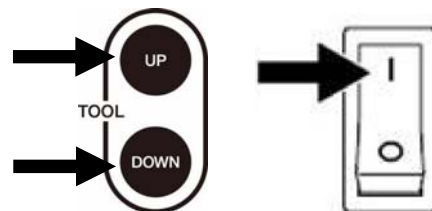
More than one machines are connected to the computer.
Connect only the single target machine to the computer.
Unplug the USB cables of the other machines.



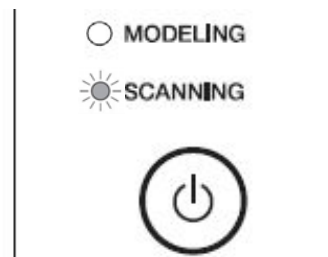
MDX-40 or MDX-40A is not in the normal mode.
Turn on the main power switch and sub power switch, then wait for the initial movement to be finished.



MDX-40 or MDX-40A is not in the updating mode.
Turn of the main power switch while pushing the [TOOL-UP] and [TOOL-DOWN] buttons.



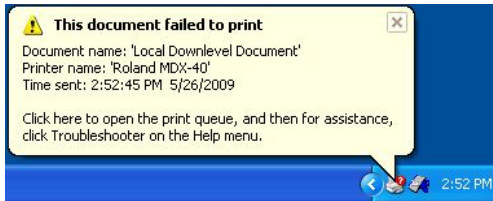
Confirm that the [SCANNING] light is blinking.



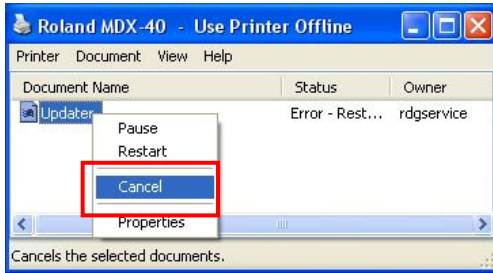


The data transmission has been interrupted while sending Program 2/2. Delete the file in the Spooler Service, and click the [OK] button. Then, send Program 2/2 again.

How to delete the file in Spooler Service



If the Spooler Service fails to send a file, a message appears as in the left picture. Click the printer icon.



The left dialog appears. Right click on the file icon, and select the [Cancel] menu to delete the file.



The data transmission has been interrupted. The machine cannot return to the original status by a fatal error. Turn off the main power switch and contact your local service center.

3. Installing the Windows Driver

3-1 Windows XP



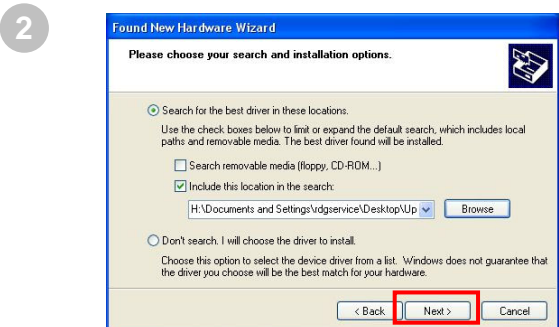
Install the Windows Driver for MDX-40A when the left dialog appears.

In case the Windows Driver for MDX-40A is already installed, connect the USB cable to the computer and click the [OK] button.

When the USB cable is connected to the computer, "Found New Hardware Wizard" appears.

Select [Install from a list or specific location] and click the [Next] button.

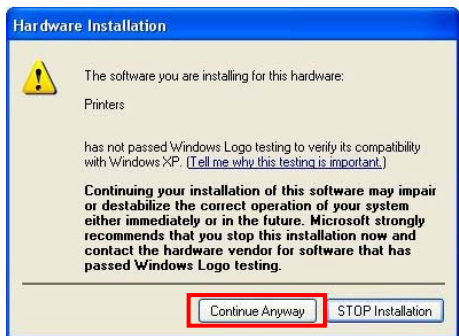
*If "Found New Hardware Wizard" does not appear, refer to page15.



Select [Search for the best driver in these locations] and check the [include this location in the search] box.

Click the [Browse] button, and select the following location.

<(the location of the downloaded folder)\
UpgradePackage\WindowsDriver\WINXP>



Click the [Continue Anyway] button when the left dialog appears.



The installation has been completed. Click the [Finish] button and continue to update the internal program.

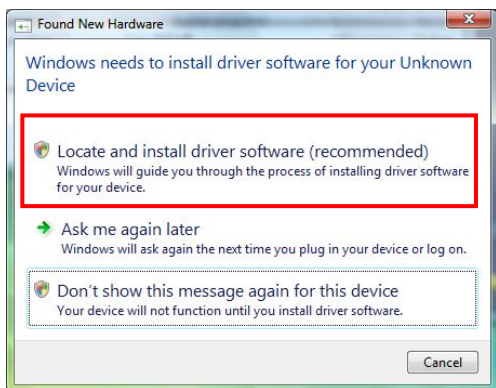
3-2 Windows Vista



Install the MDX-40A driver when the left dialog appears.

In case the Windows Driver for MDX-40A is already installed, connect the USB cable to the computer and click the [OK] button.

1



When the USB cable is connected to the computer, the "Found New Hardware" wizard appears.

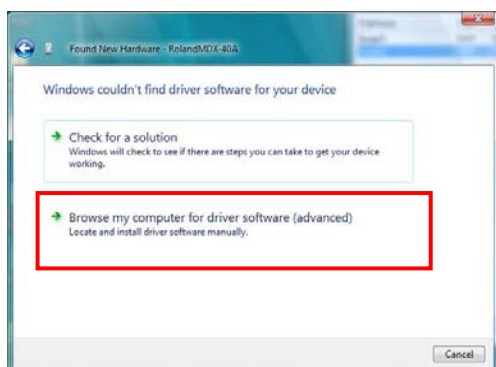
Click "Locate and install driver software".

*If the "Found New Hardware" wizard does not appear, refer to page17.

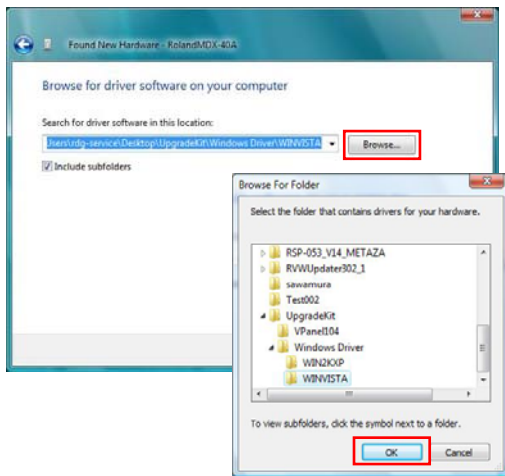
2



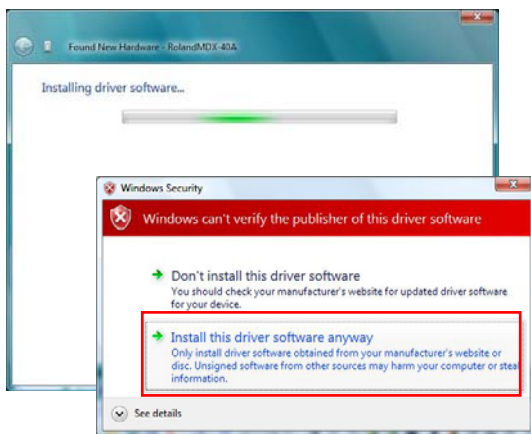
Click "I don't have the disc. Show me other options."



Click "Browse my computer for driver software".

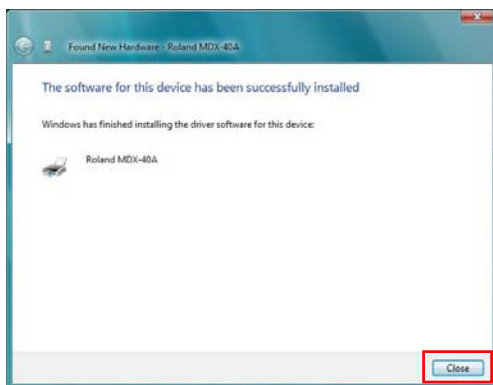


Click the [Browse] button, and select the following location.
< (the location of the downloaded folder)\ UpgradePackage\WindowsDriver\WINVISTA >
Then, click the [Next] button.



Click "Install this driver software anyway" when the left dialog appears.

3



The installation has been completed. Click the [Close] button and continue to update the internal program.

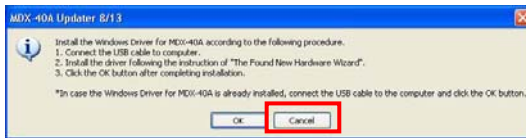
3-3 What to Do If Installation is Impossible

Windows XP

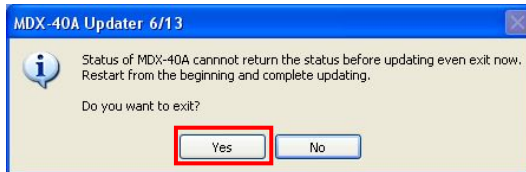
1 Turning off the main power switch.

Turn off the main power switch and unplug the USB cable from the computer.

2 Ending the Application

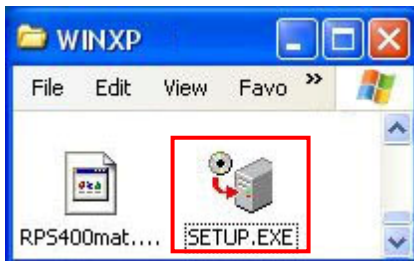


Click the [Cancel] button.

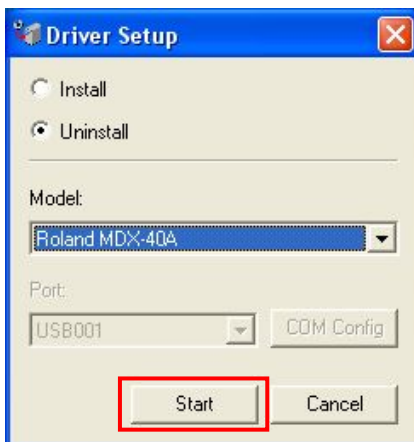


Click the [Yes] button to end the application.

3 Uninstalling the driver

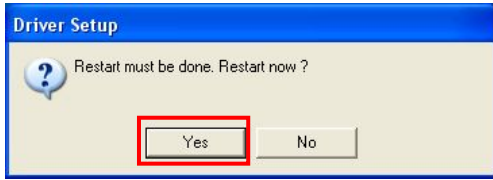


Open the folder of UpgradePackage > WindowsDriver > WINXP, and launch SETUP.EXE.



Select [Uninstall], and [Roland MDX-40A] in the Model list. Then click the [Start] button.

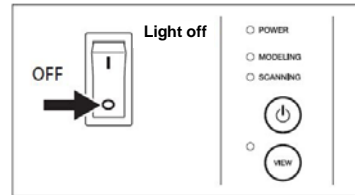
4 Restarting Windows



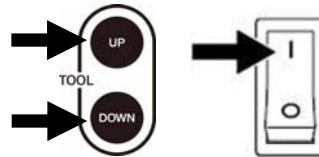
Click the [Yes] button to restart Windows.

5 Setting up the machine for update mode

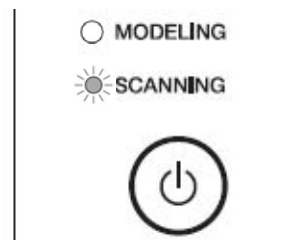
Turn off the main power switch of MDX-40A.



Turn of the main power switch while pushing the [TOOL-UP] and [TOOL-DOWN] buttons.



Confirm that the [SCANNING] light is blinking.



6 Installing the driver



When the USB cable is connected to the computer, "Found New Hardware Wizard" appears.

Install the driver in reference to page 12 of this manual.

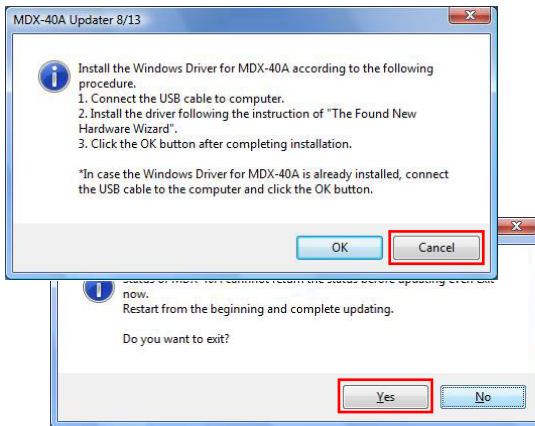
After installation of the driver is completed, restart the MDX40A Updater and follow the instructions from the beginning.

Windows Vista

1 Turning off the main power switch.

Turn off the main power switch and unplug the USB cable from the computer.

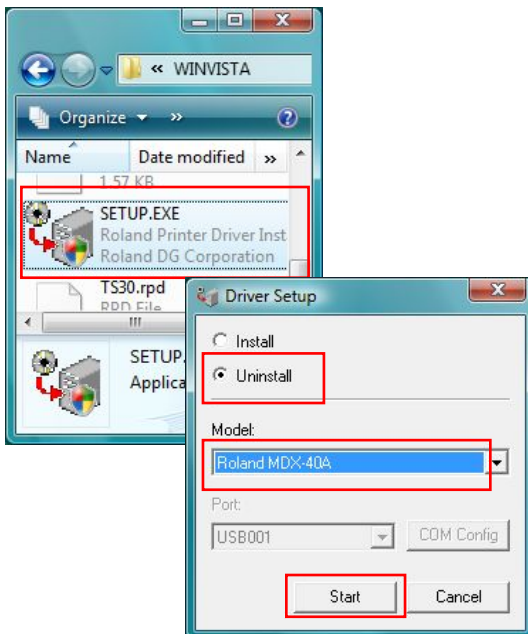
2 Ending the Application



Click the [Cancel] button.

Click the [Yes] button to exit the application.

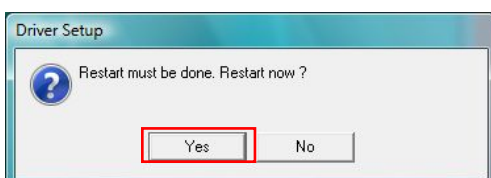
3 Uninstalling the driver



Open the folder of UpgradePackage > WindowsDriver > WINVISTA, and launch SETUP.EXE.

Select [Uninstall], and [Roland MDX-40A] in the Model list. Then click the [Start] button.

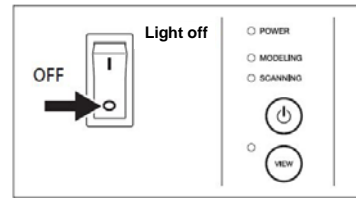
4 Restarting Windows



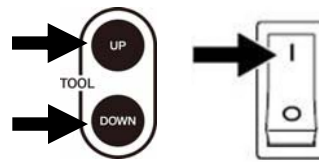
Click the [Yes] button to restart Windows.

5 Setting up the machine for update mode

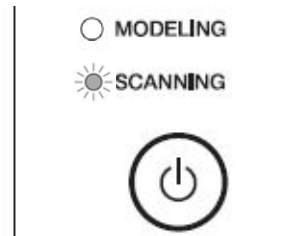
Turn off the main power switch.



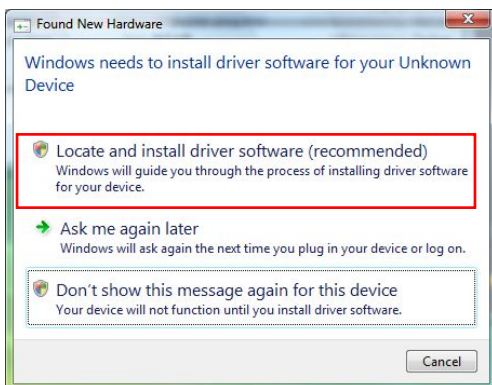
Turn of the main power switch while pushing the [TOOL-UP] and [TOOL-DOWN] buttons.



Confirm that the [SCANNING] light is blinking.



6 Installing the driver



When the USB cable is connected to the computer, the “Found New Hardware” wizard appears.

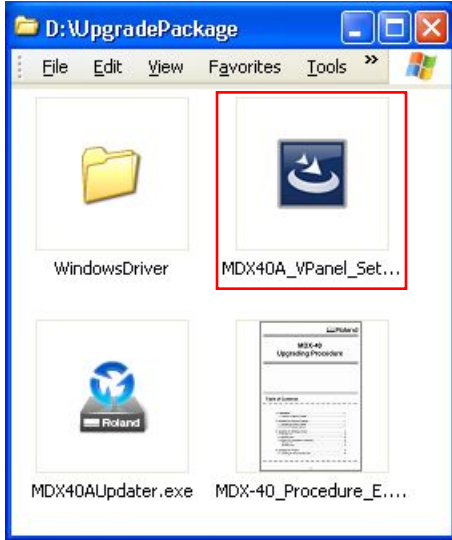
Install the driver in reference to page 13 of this manual.

After installation of the driver is completed, restart the MDX40AUpdater and follow the instructions from the beginning.

4. Installing the VPanel

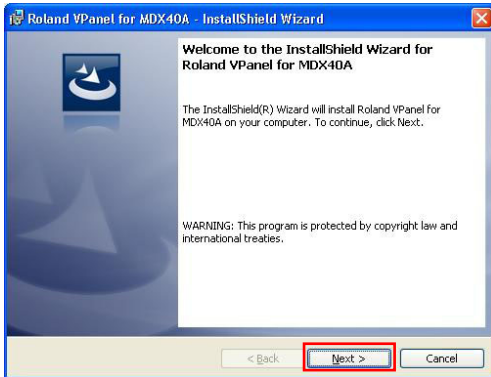
4-1 Installing the VPanel for MDX-40A

1



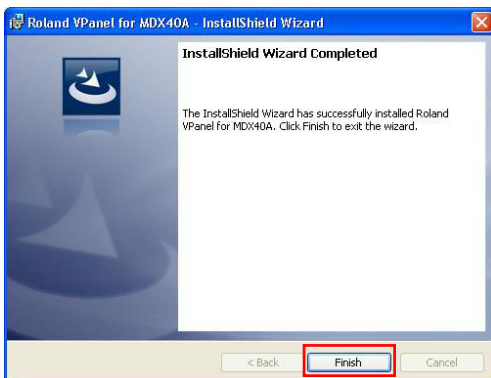
Launch MDX40A_VPanel_Setup.exe in the VPanel folder.

2



When the screen shown in the figure appears, click the [Next] button. The following the instruction messages to install and set up the program.

(For Windows Vista only : The “User Account Control” appears, click “Allow”, and uninstall the VPanel.)



When un-installation finishes, click the [Finish] button to exit the application.