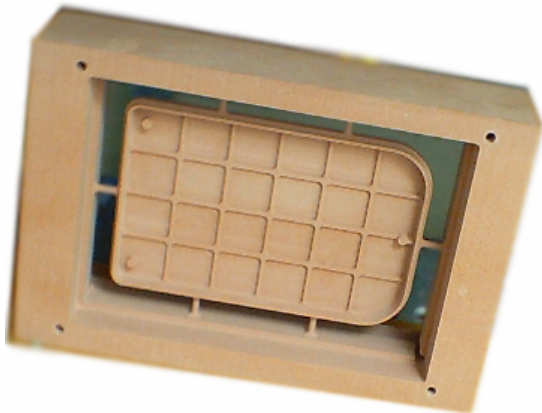
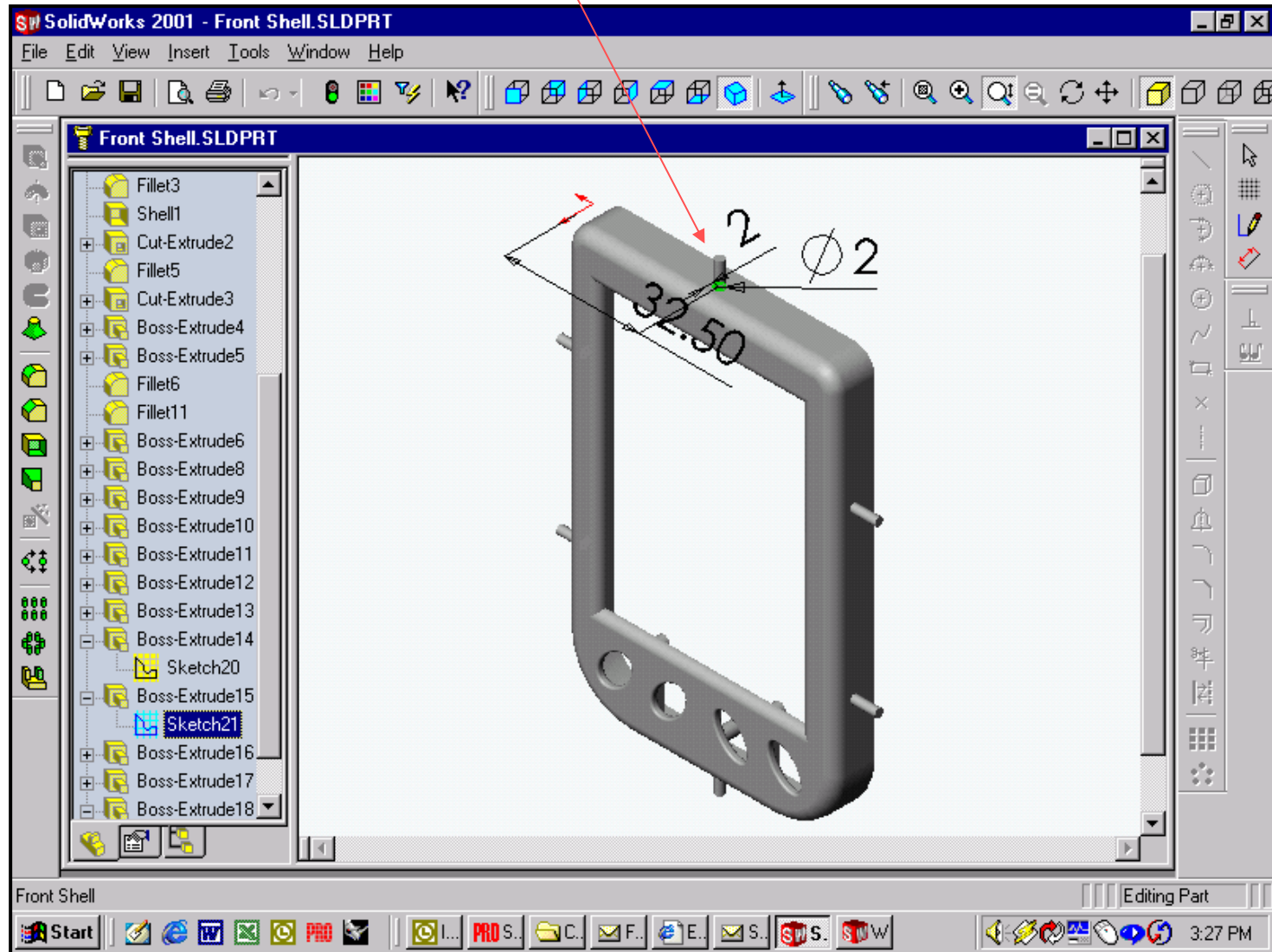


MDX-500 Tutorial

How to Mill a Two Sided Part

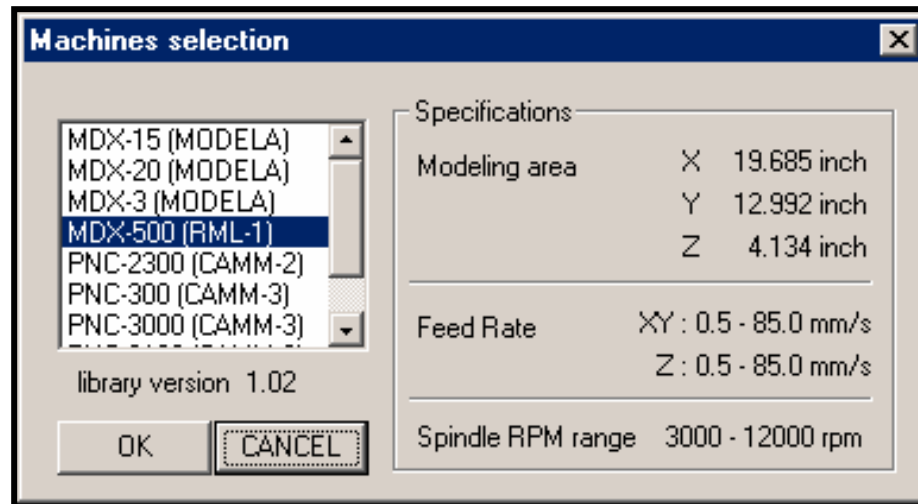


Design part with posts using a CAD/CAM package and save as an .STL file format.

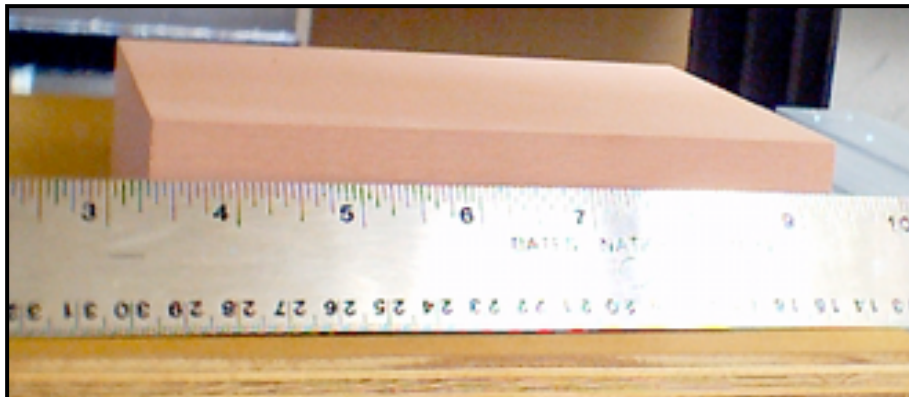
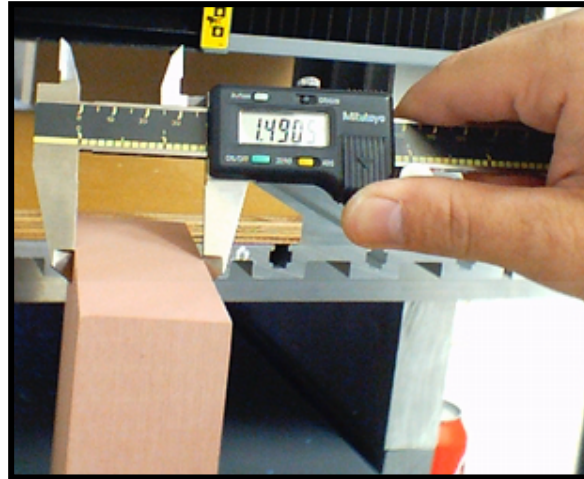


Make sure that the MODELA software is setup for the MDX-500 Windows driver.

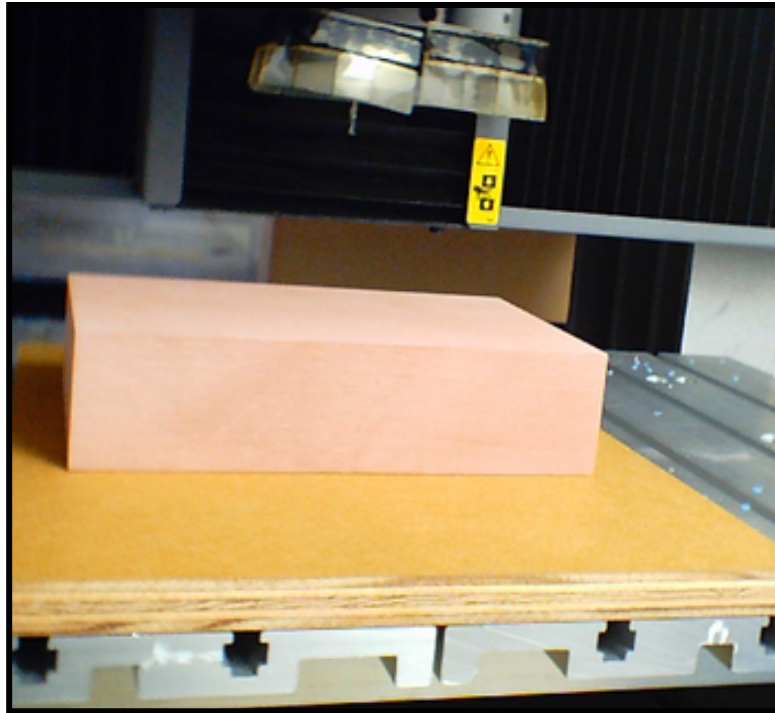
- The machine setting is located in MODELA Player software under [OPTION] [MACHINE].



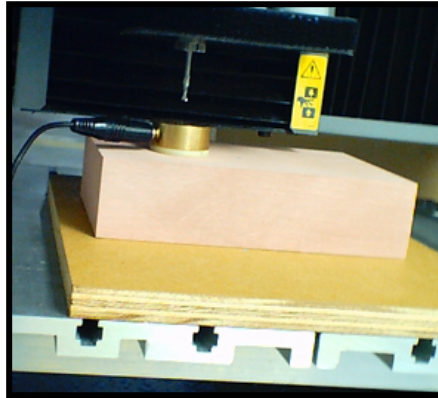
Measure the Stock (example: 4 x 6 x 1.490)



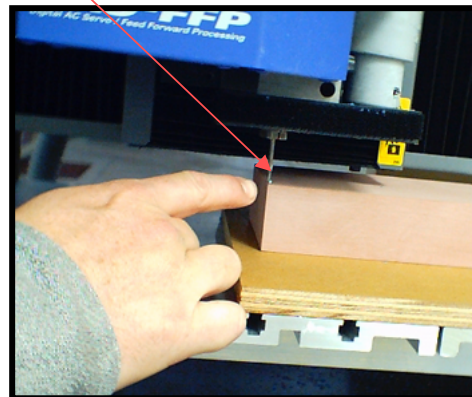
- Secure the material to the bed using high tack double stick tape.
- Place a .125" tool in the MDX-500.



- Set Z zero by using the sensor mode located in sub-menu 10-Sensor mode on MDX-500.

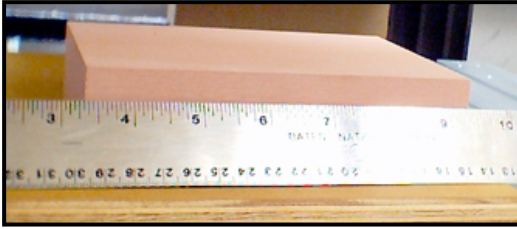


- Set your XY Origin to the lower left of your material stock.



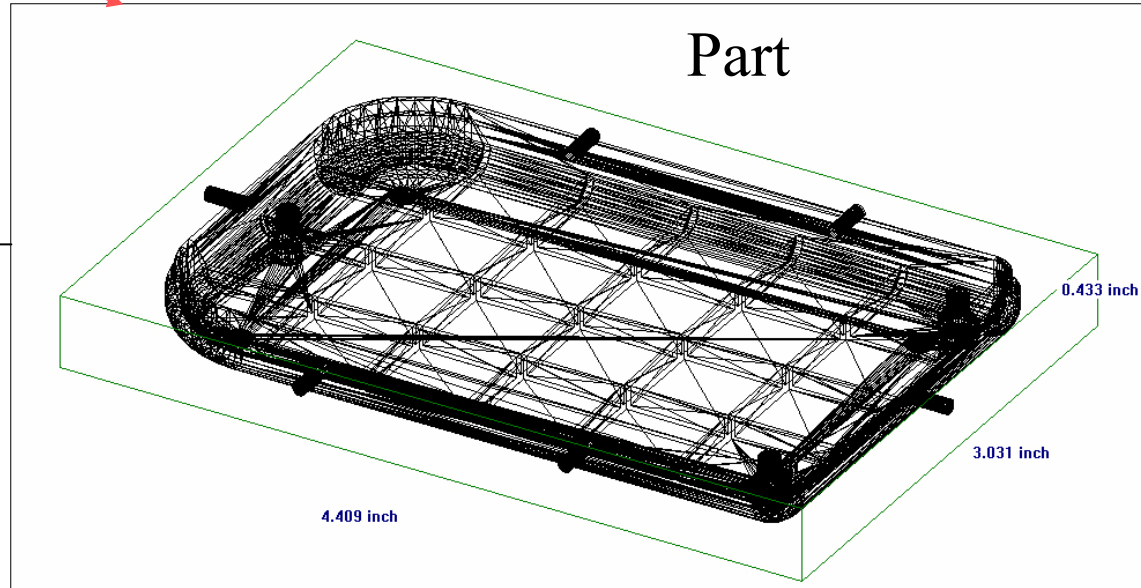
Time to do the Math

Stock



1. Measure Length [6"]
2. Measure Width [4"]
3. Measure Height [1.490]

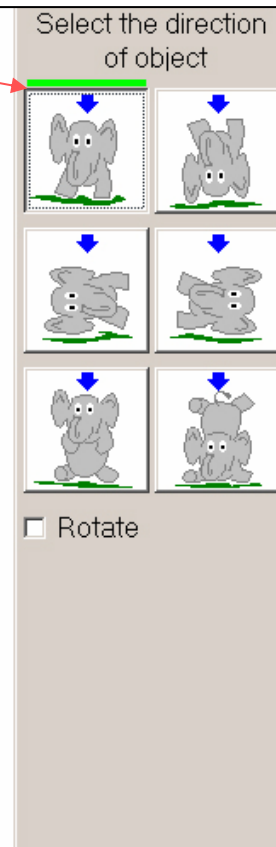
Part



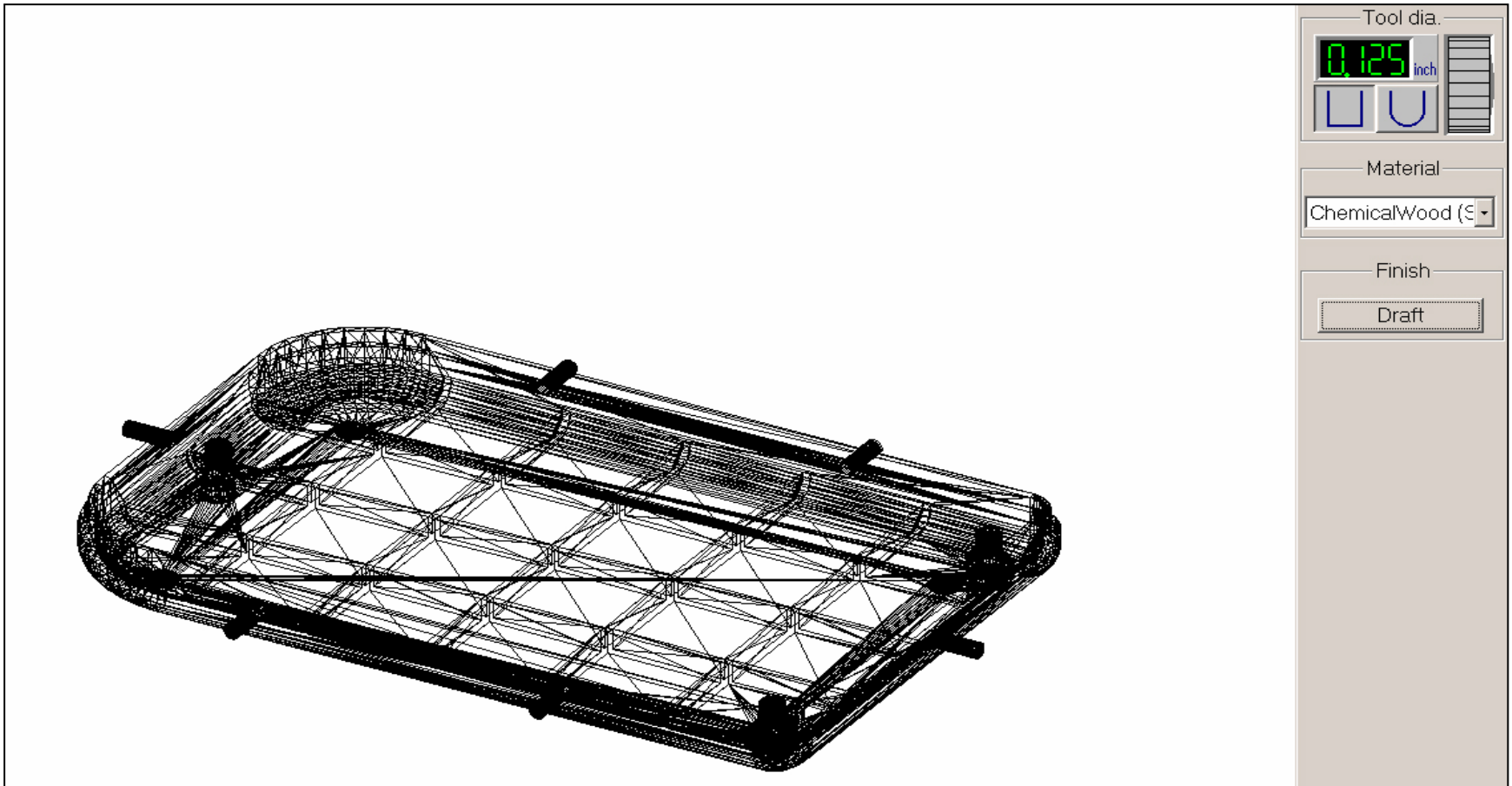
1. [6"]Stock Length: Subtract part Length [4.409"] = [1.591"]. Divide by 2 = [.795"]. This is your **LowerLeft X** value.
2. [4"]Stock Width: Subtract part Width [3.03"] = [.969"]. Divide by 2 = [.484"]. This is your **LowerLeft Y** value.
3. [1.490"]Stock Height: Subtract Part Height[1.047"]. Divide by 2 = [.5285"]. This equals surfacing depth.

How to Layout Your Part in MODELA Software

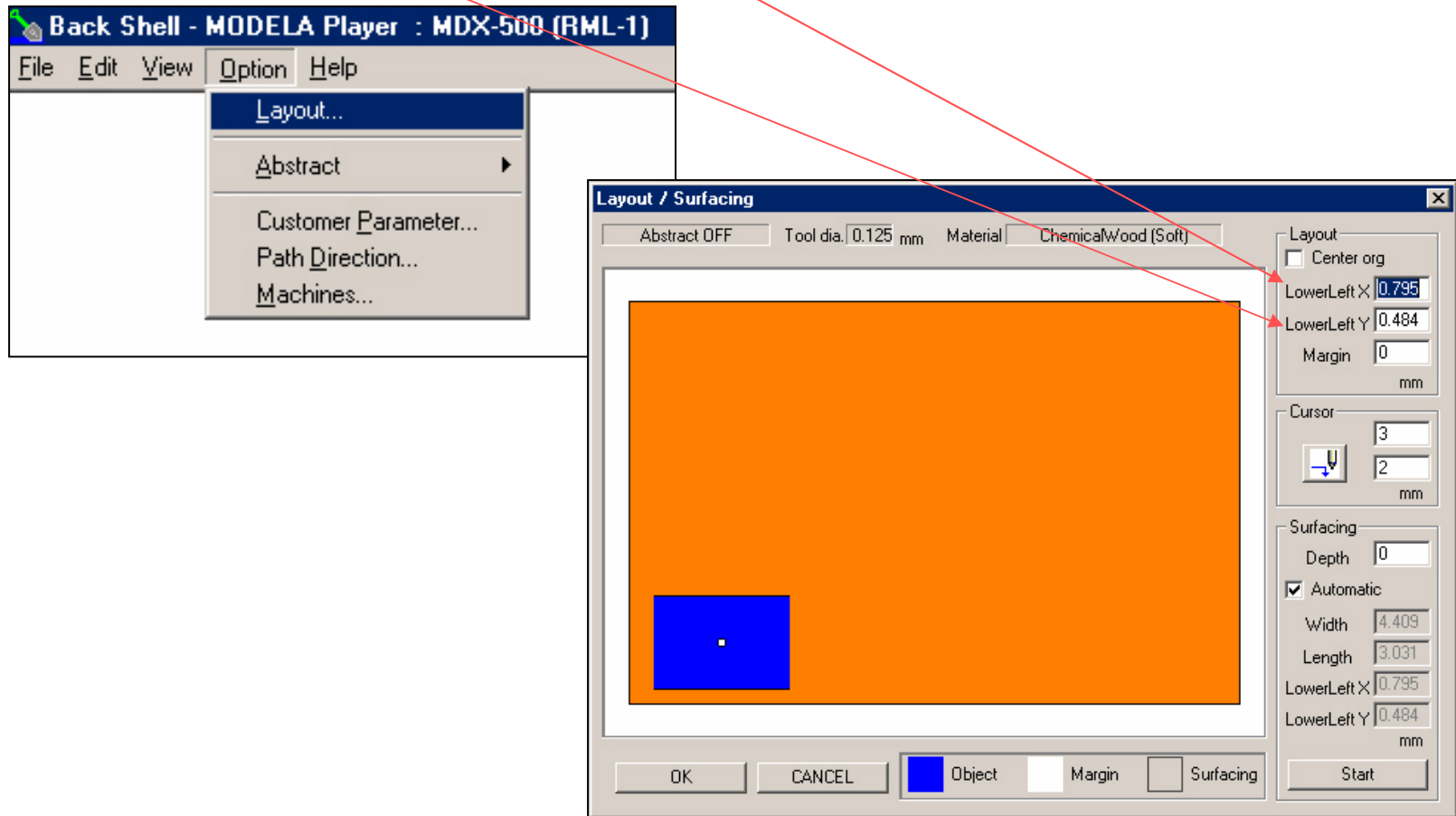
- First mill the top of the part by selecting the upper left elephant.



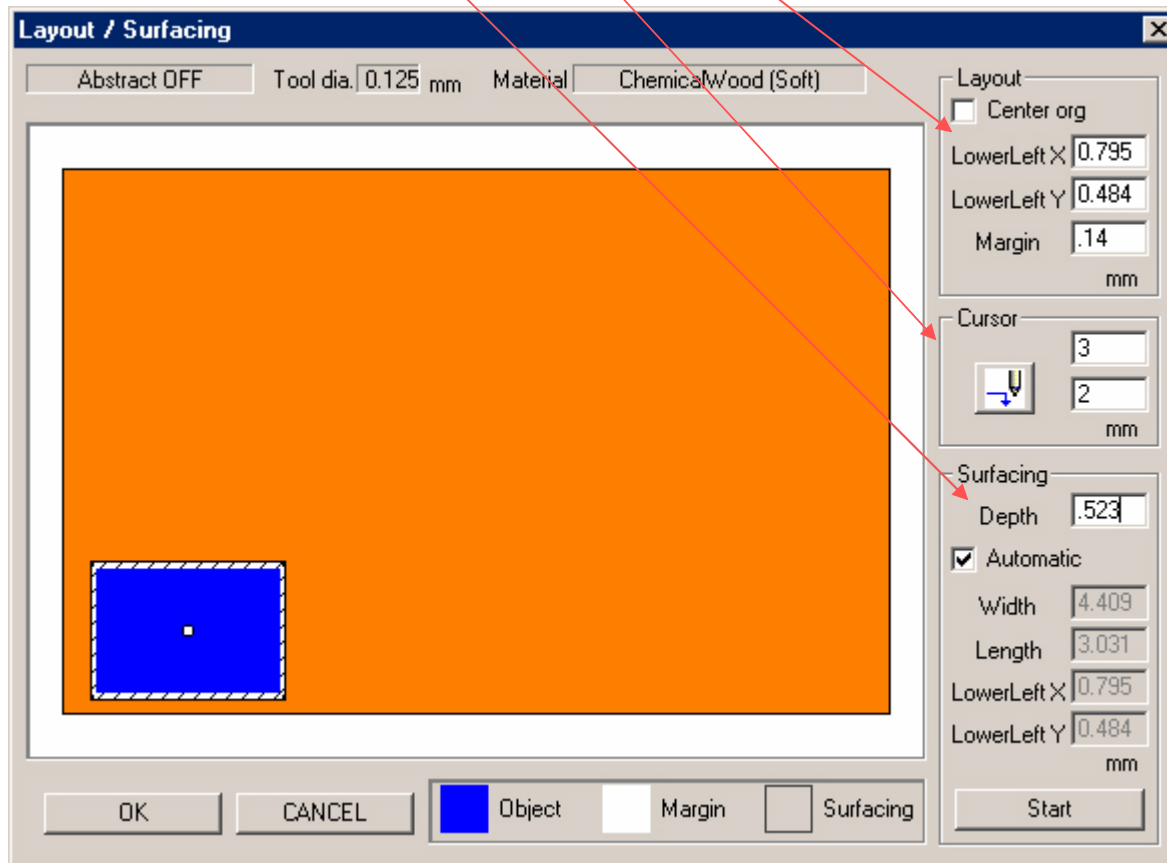
- Select your material type and tool; then select Draft finish, but do not click [Start]. Proceed to the [Option] [Layout] menu as shown on the next page.



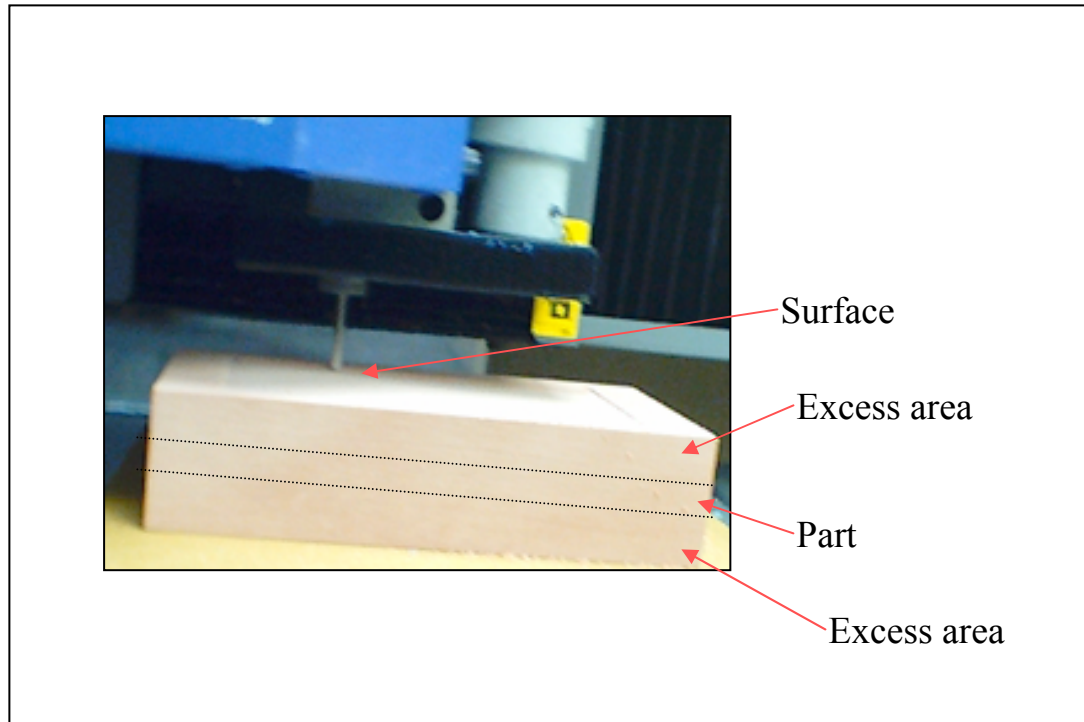
- Input the following LowerLeft X value [0.795”].
- Input the following LowerLeft Y value [0.484”].



- Input [.528] in the Depth field located under Surfacing.
- Change Margin to .14 so your tool will not make contact with the side.
- Now Click [Start] to perform Surfacing.

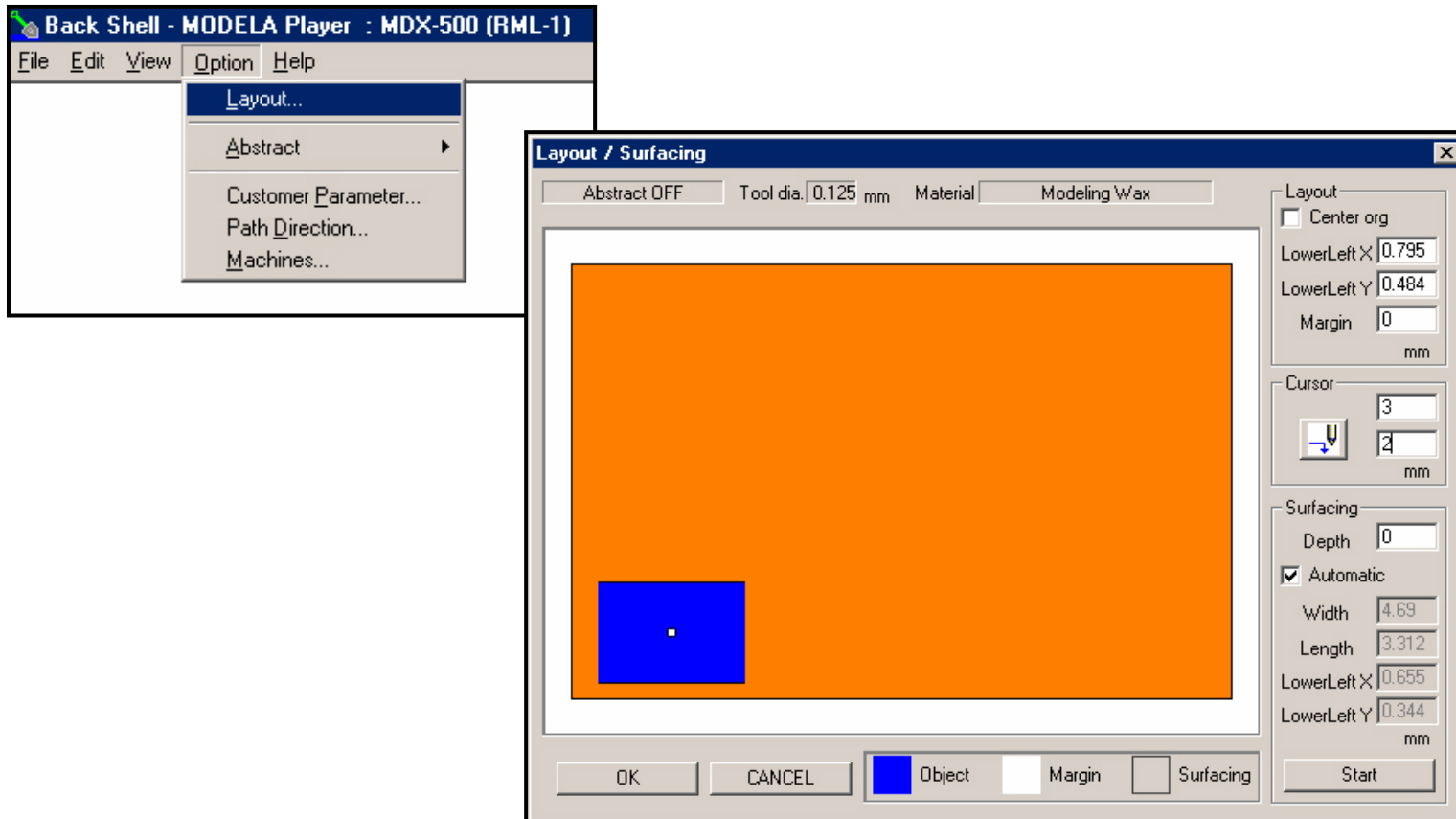


- Surfacing is required to removed excess material to reach the center working area of our stock.



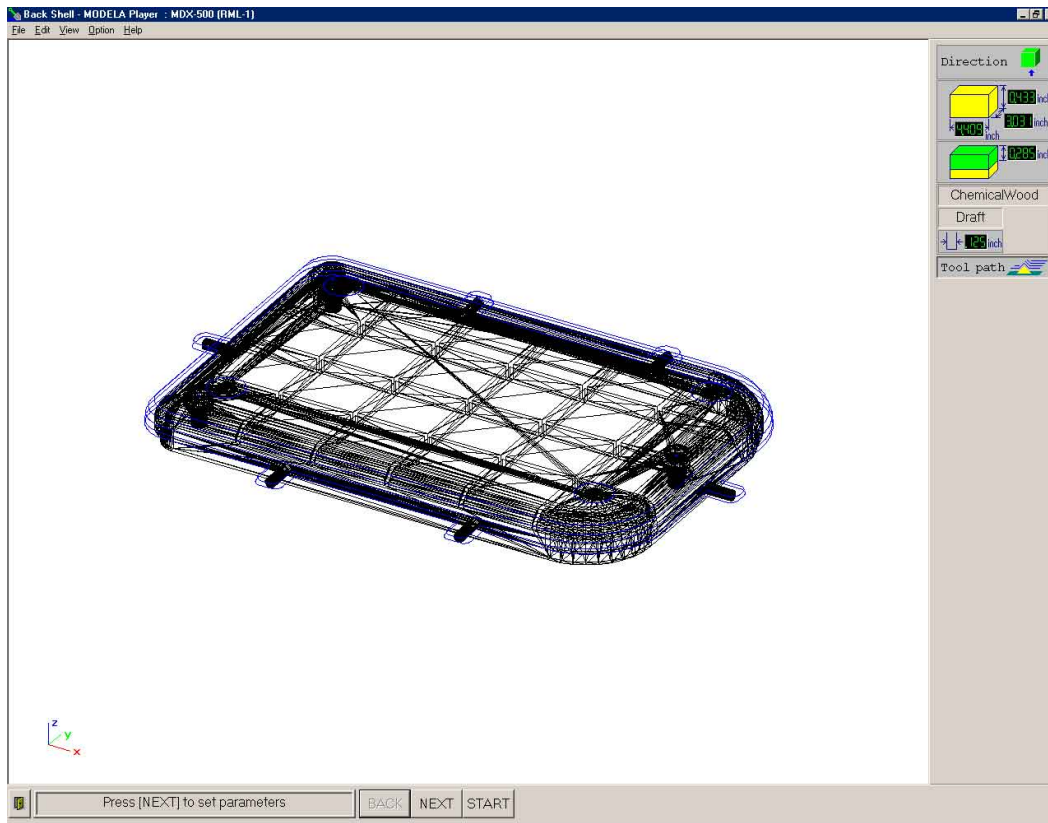
Top Draft Cut

- Change the [Margin] to [0].
- Change Surfacing Depth to [0] and [Click] [OK].

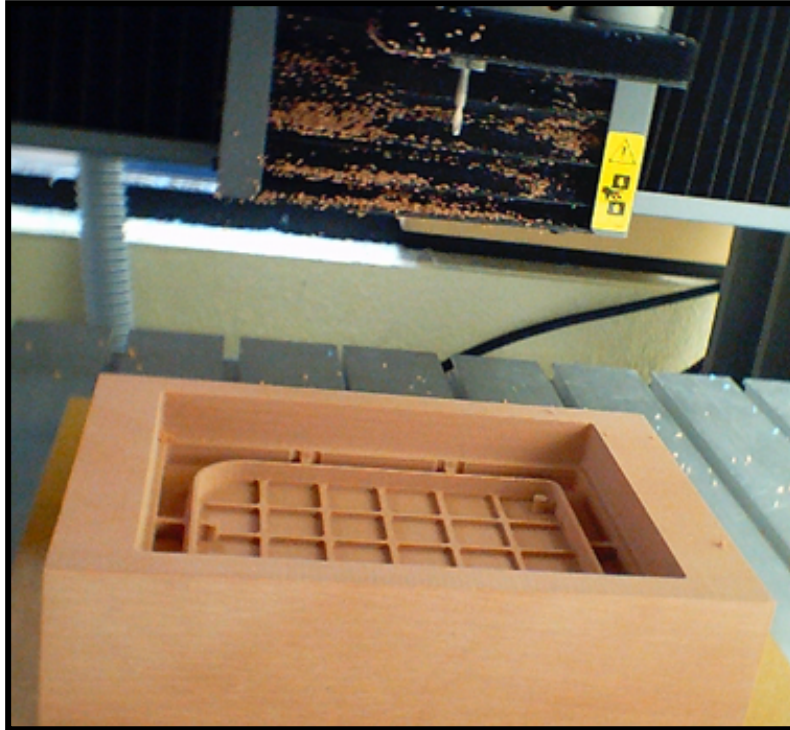


Top Draft Cut

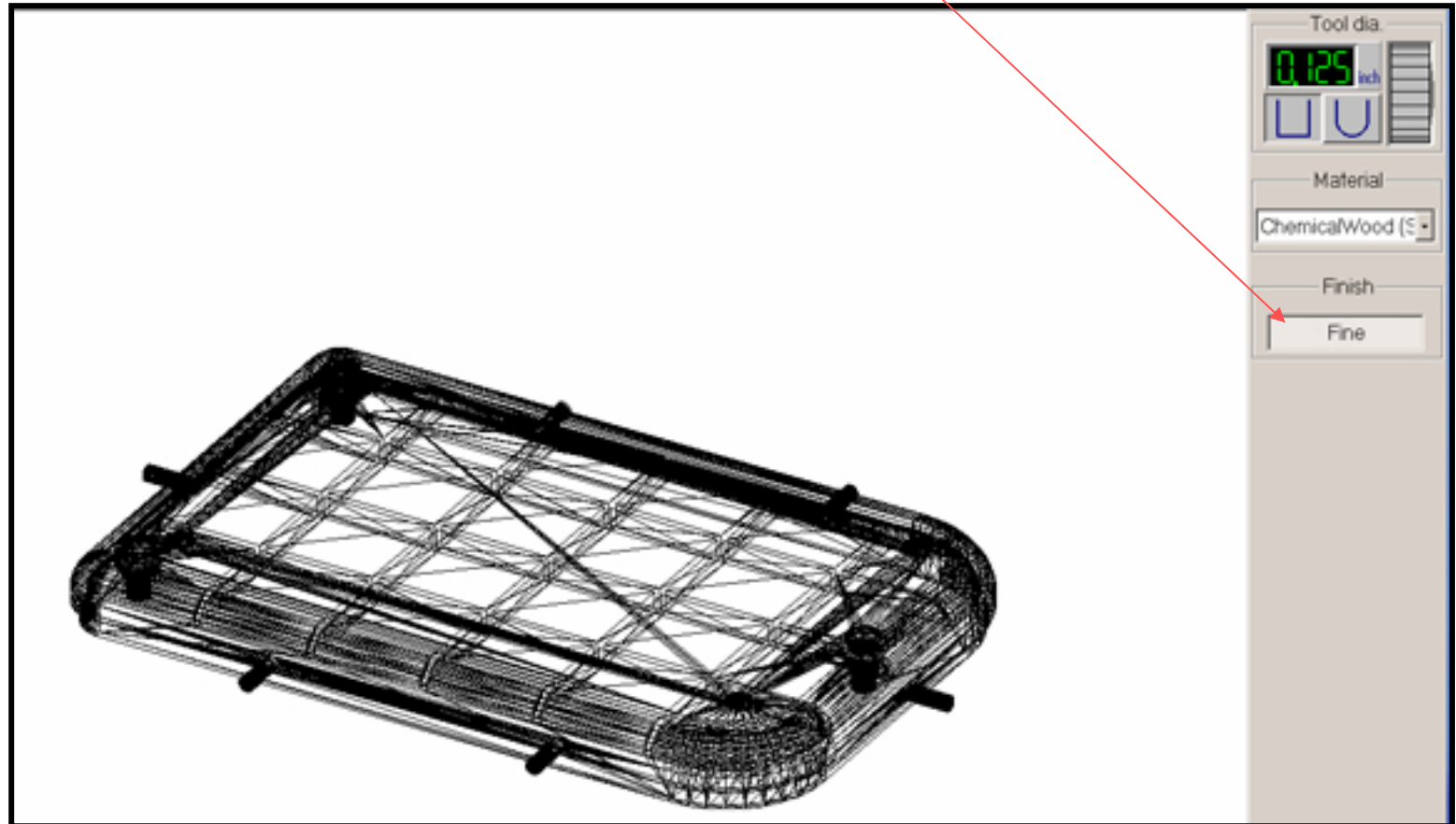
- In Modela software, select [Tool path] to view your draft settings.
- Click [Start] to begin Draft pass.



Your Draft Cut is now complete .

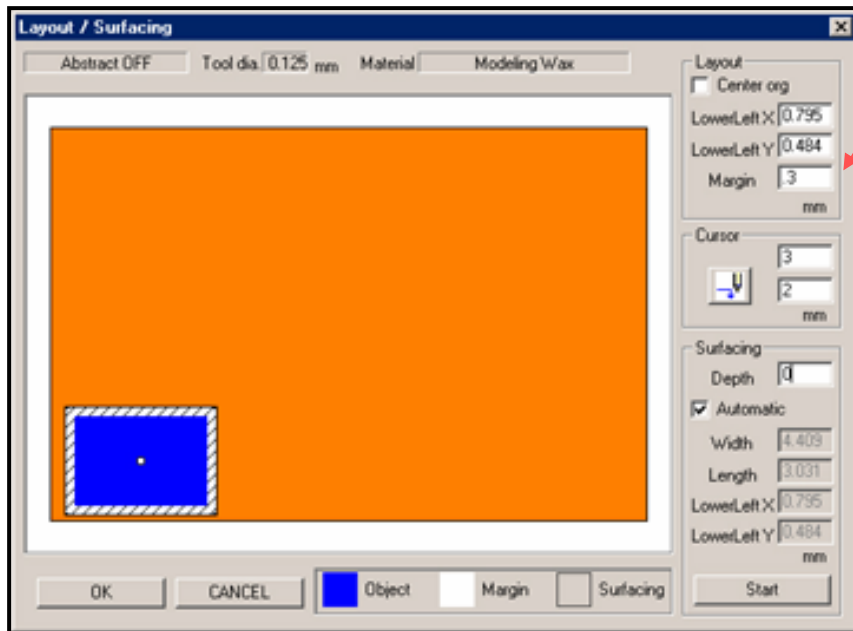


- Proceed with Fine pass on your part by selecting the [Finish][Fine] in Modela software.



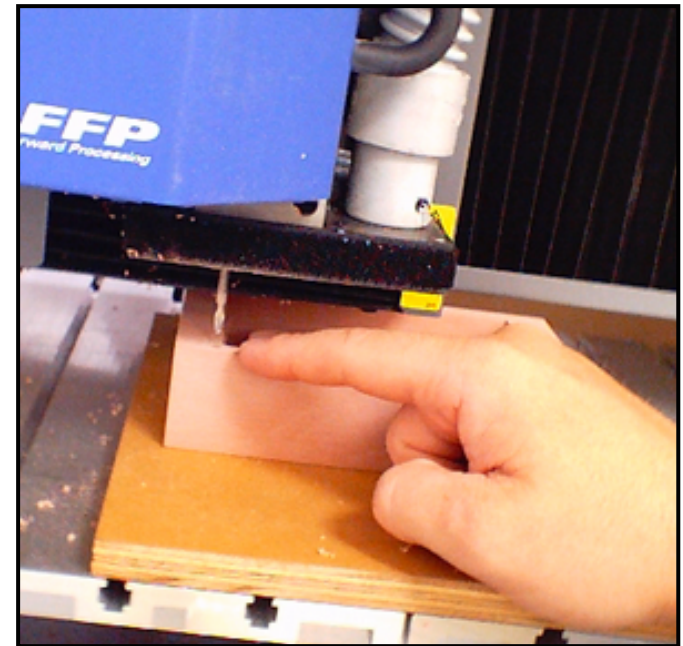
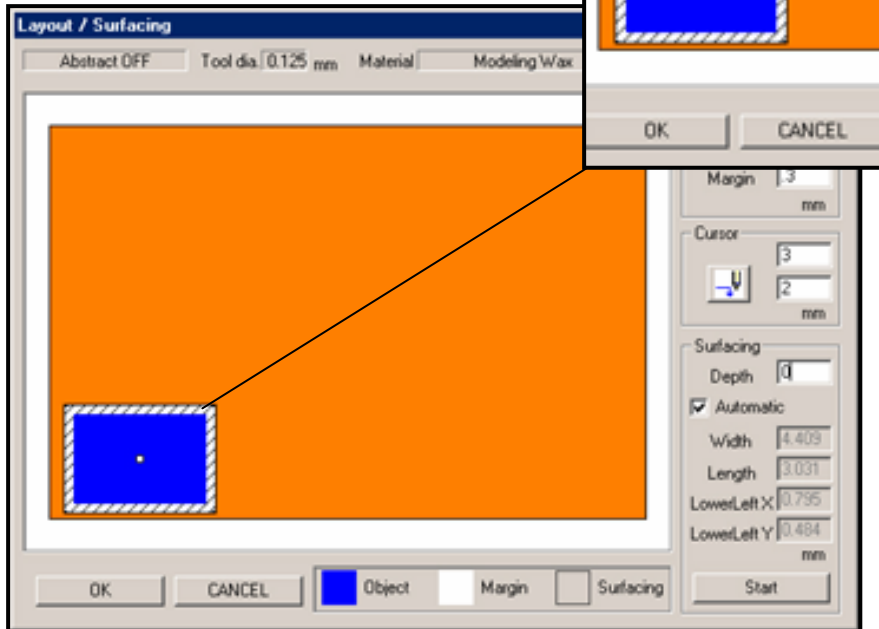
Drilling Index Holes for the Part Flip

- Reset your Z-Zero on the top surface of the block.
- In Layout/Surfacing Screen – set margin to .3.



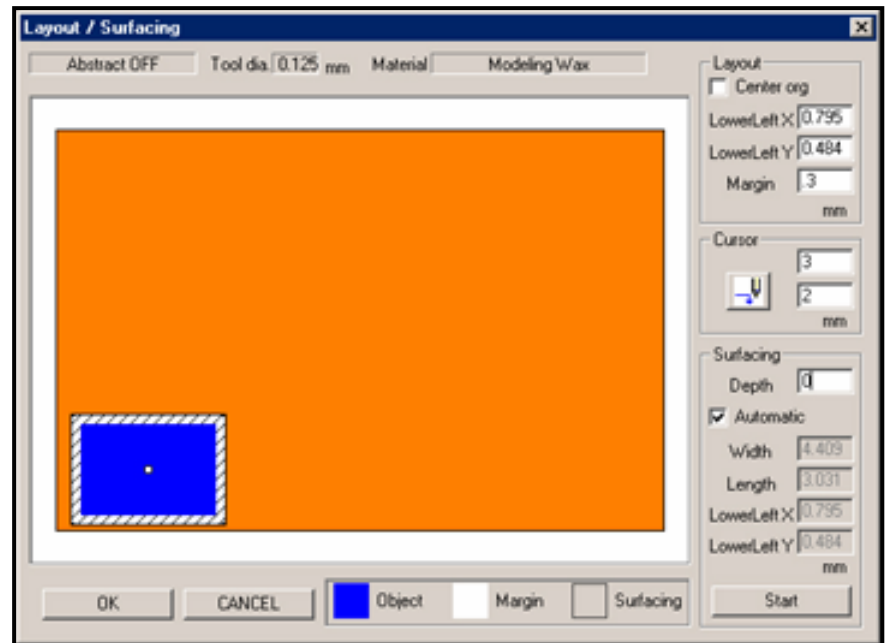
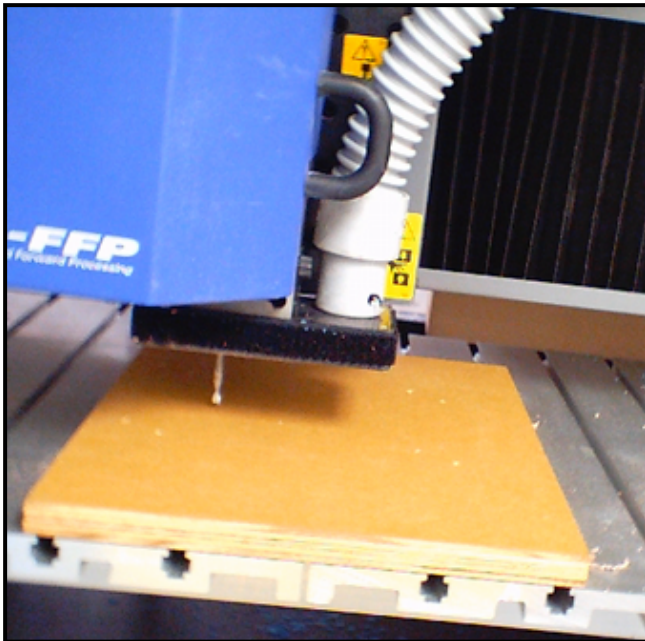
Drilling the Index Holes

- Click on the bottom left corner of the blue square.
- The MDX-500 head will move to left corner and Z-O.
- Manually on the MDX-500 you will need to click [Spindle] and use the [Z-] to drill the pins holes. We recommend [-600].
- Repeat steps 3-5 on each corner.



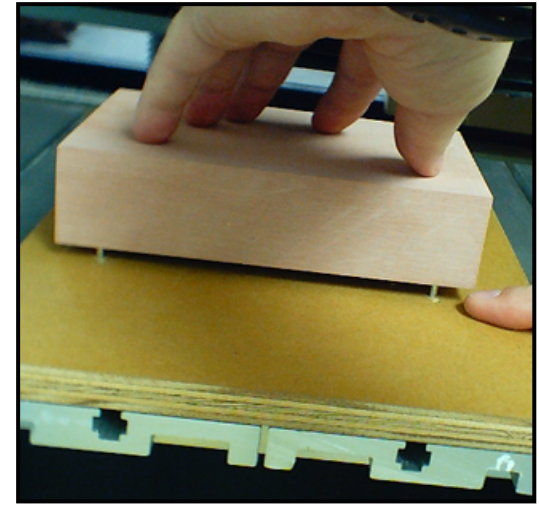
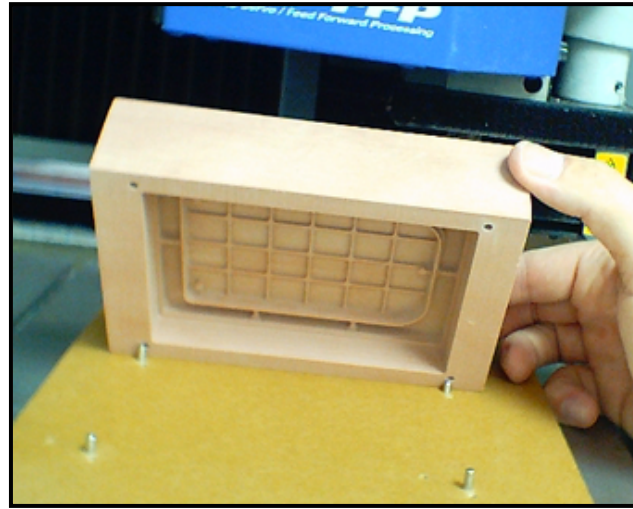
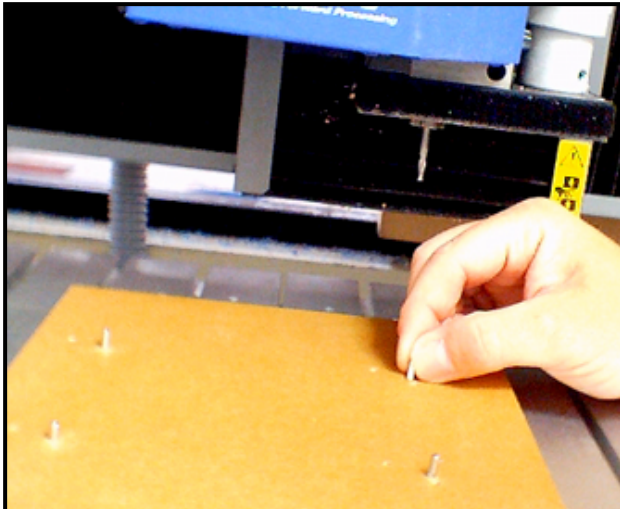
Index Pin Mount

- After removing your part, mount a quarter inch board with double sided tape to the bed.
- Set a new Z-zero on the board and drill a new set of index holes just like the example on the prior page.



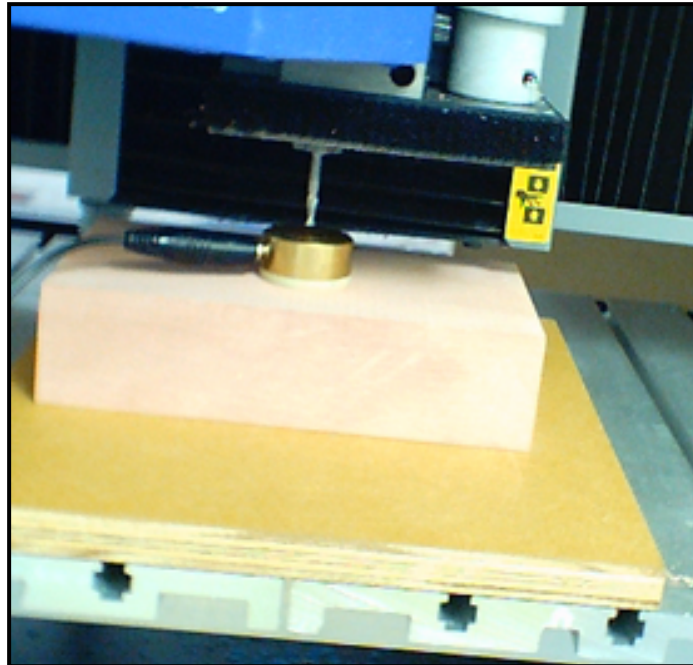
Set Up Part with the Same Holes

- Place pins in the drilled holes and flip the cut stock and press down.
- Use double-sided tape to secure part.
- You are now ready to surface the second side of the part.



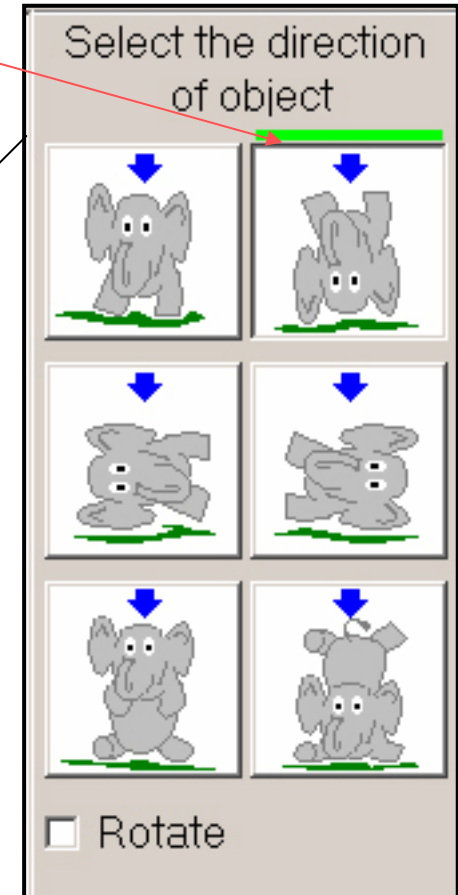
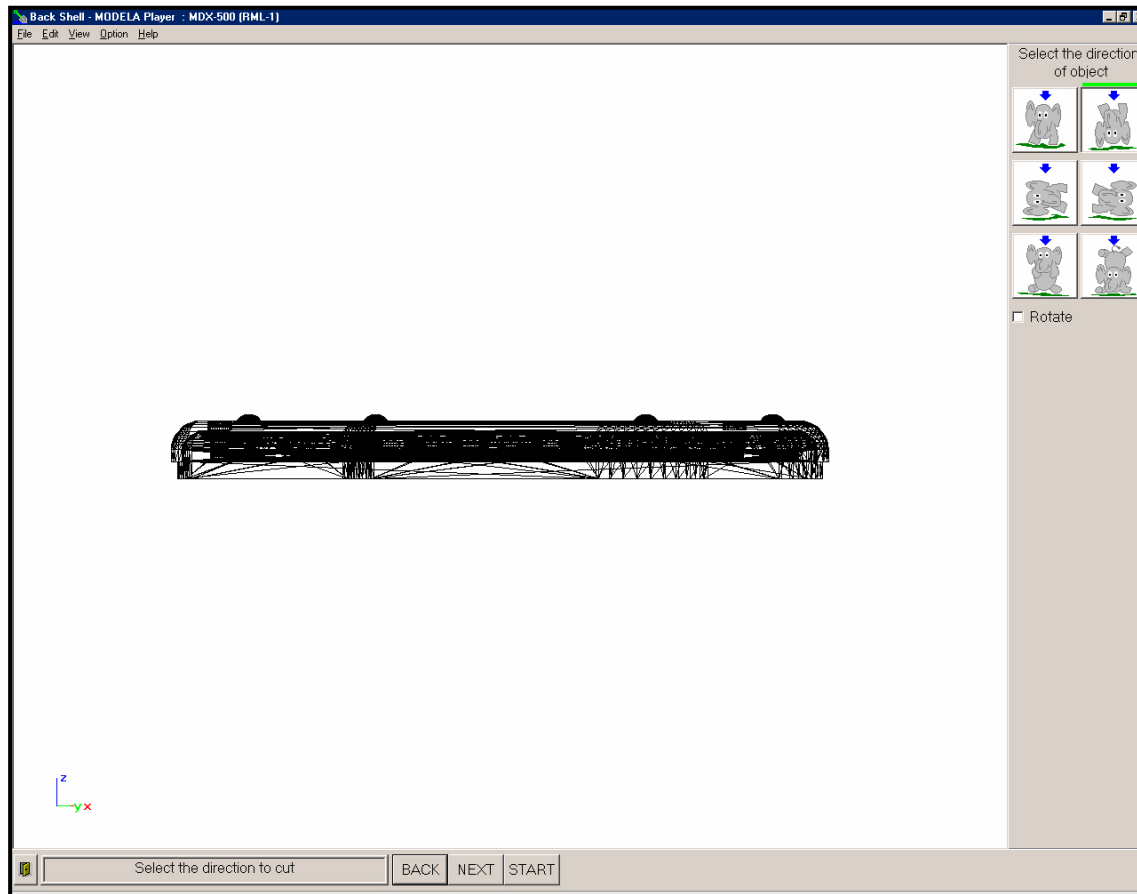
Set New Z-Zero on the MDX-500

- Set Z-zero by using sensor mode located in sub-menu 10- (Sensor mode).



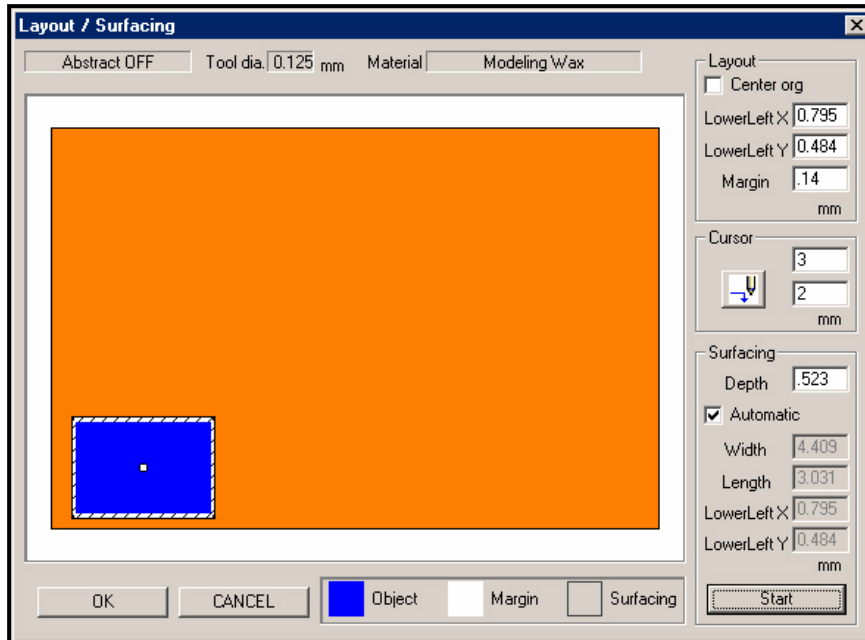
Flip Part in Modela Software

- To flip the part in Modela software, click the upside down elephant.
- Your part should appear on the screen upside down.



Surfacing Mode

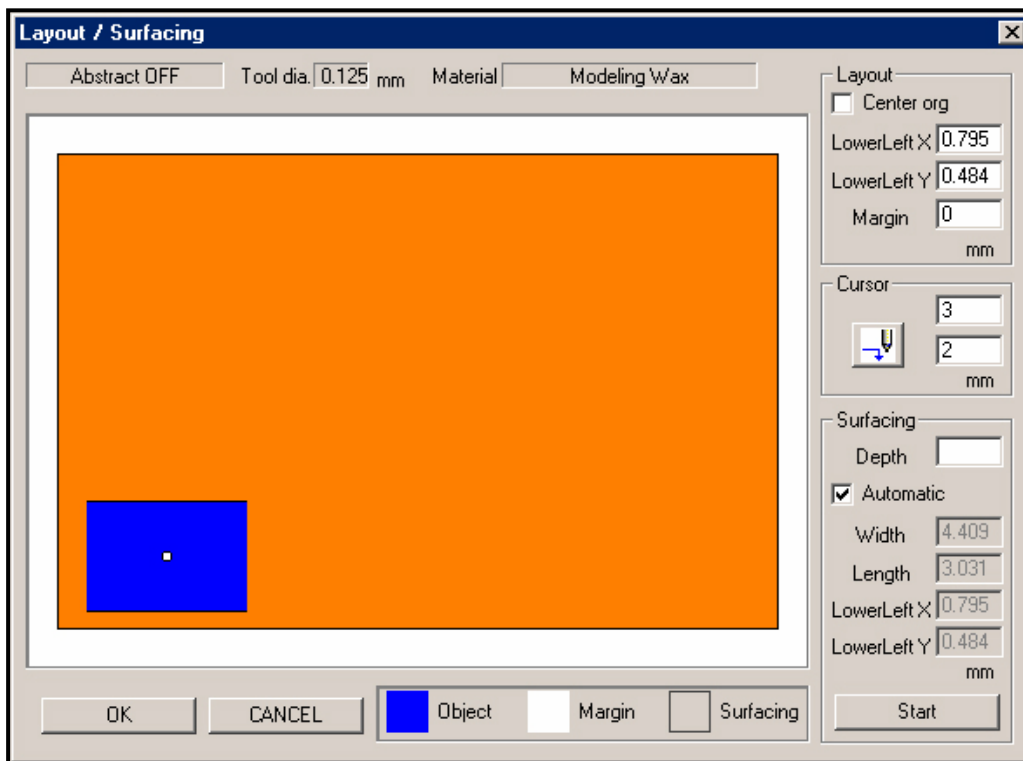
- Proceed to the [Option] [Layout] menu in Modela software.
- Input the following LowerLeft X value [0.795”].
- Input the following LowerLeft Y value [0.484”] with a .14 margin.
- Input [.523] in the Depth field located under Surfacing.
- Now Click [Start] to perform Surfacing on second side.



Draft Mode

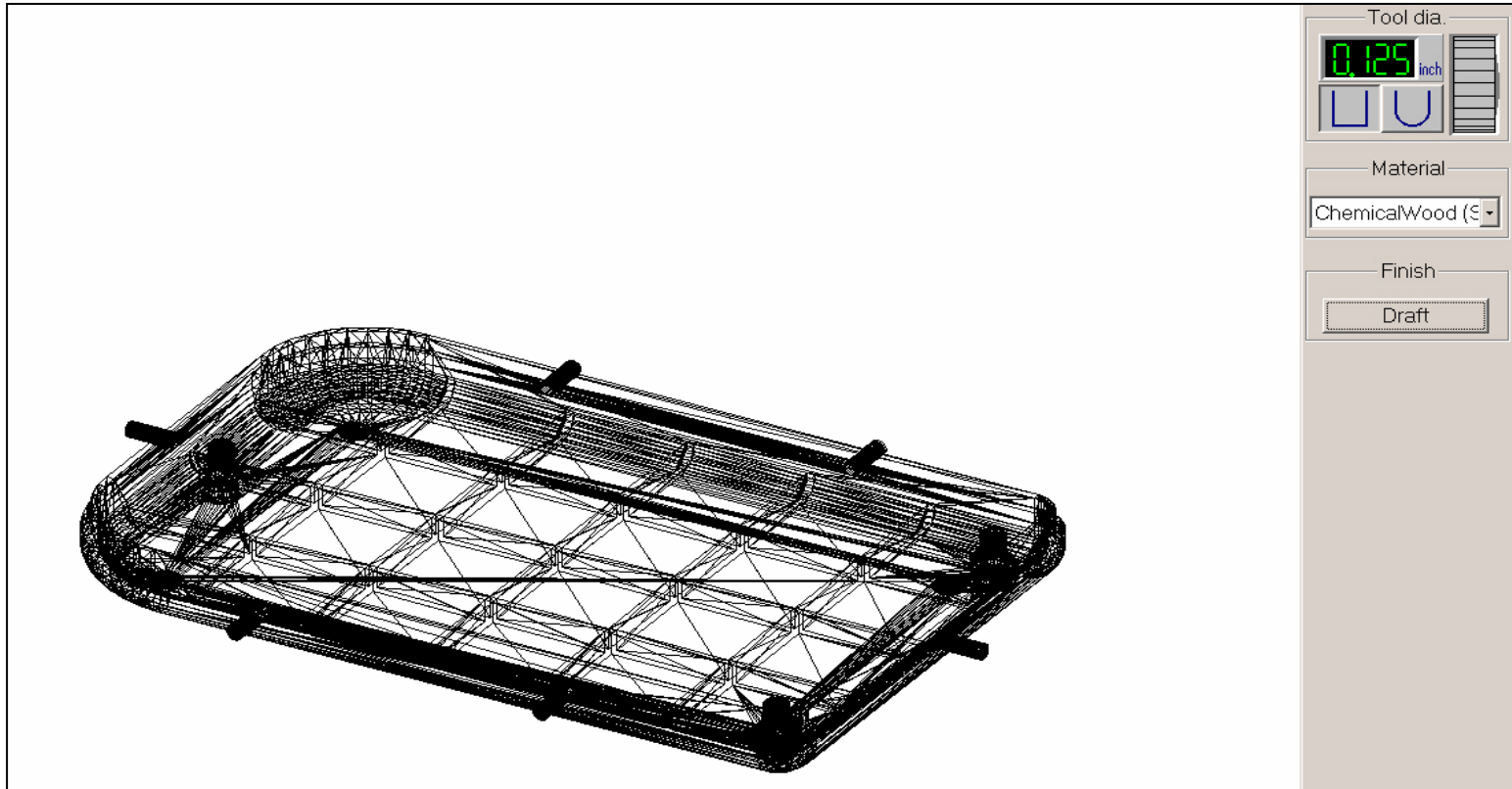
Reset draft in Modela software by the following

- Change the [Margin] to [0].
- Change Surfacing Depth to [0] and [Click] [OK].



Bottom Draft Cut

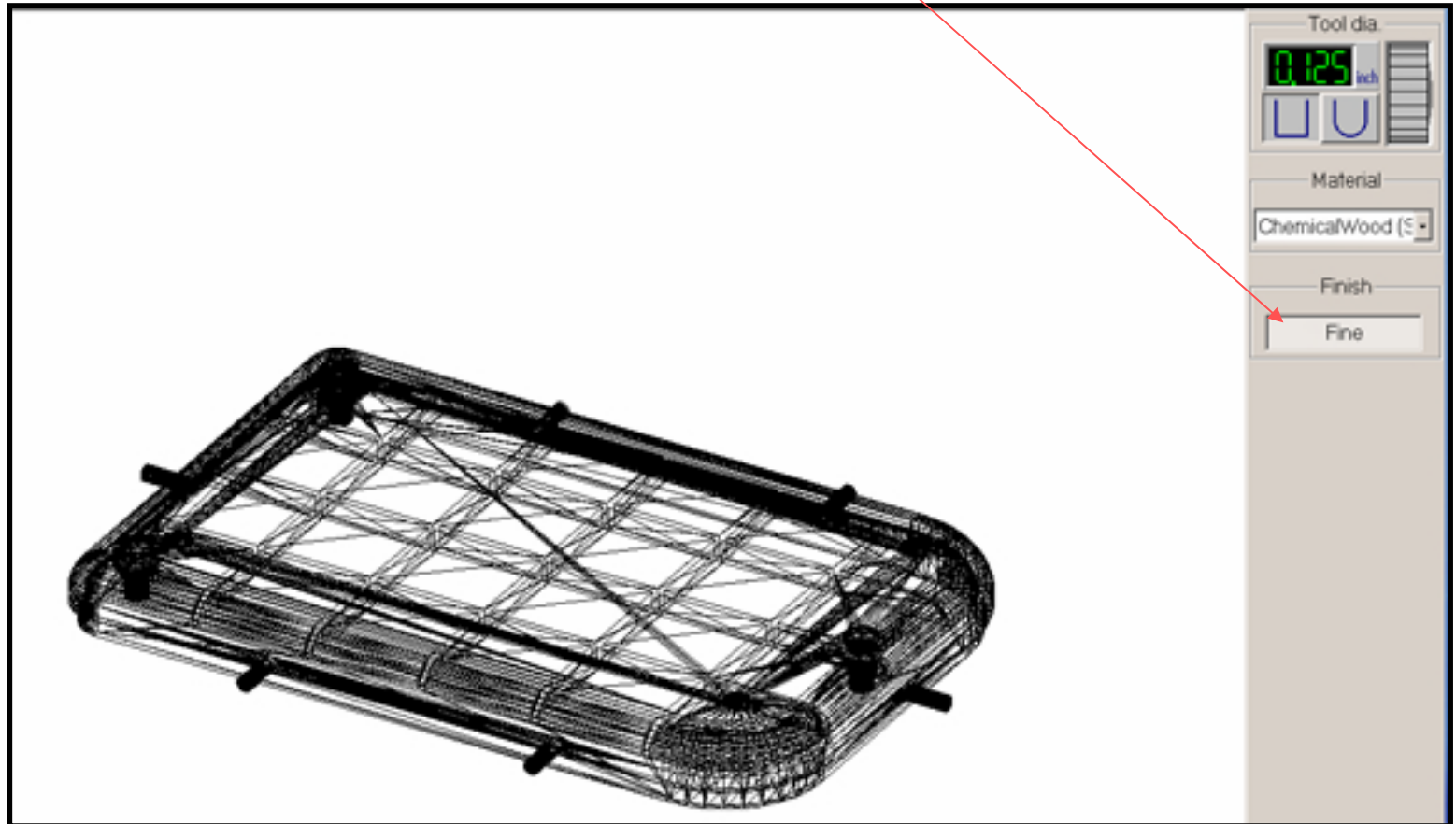
- Select [Draft] and select next.
- You must reset your Z-zero on the new surface by using the sensor on the MDX-500 prior to starting your draft cut.



Send Draft Cut



Proceed with Fine Pass on Your Part by
Selecting the [Finish][Fine] in Modela
Software.



Finished Part

