

Sales Guide

METAZA ***MPX-95***

Imagine.  Roland



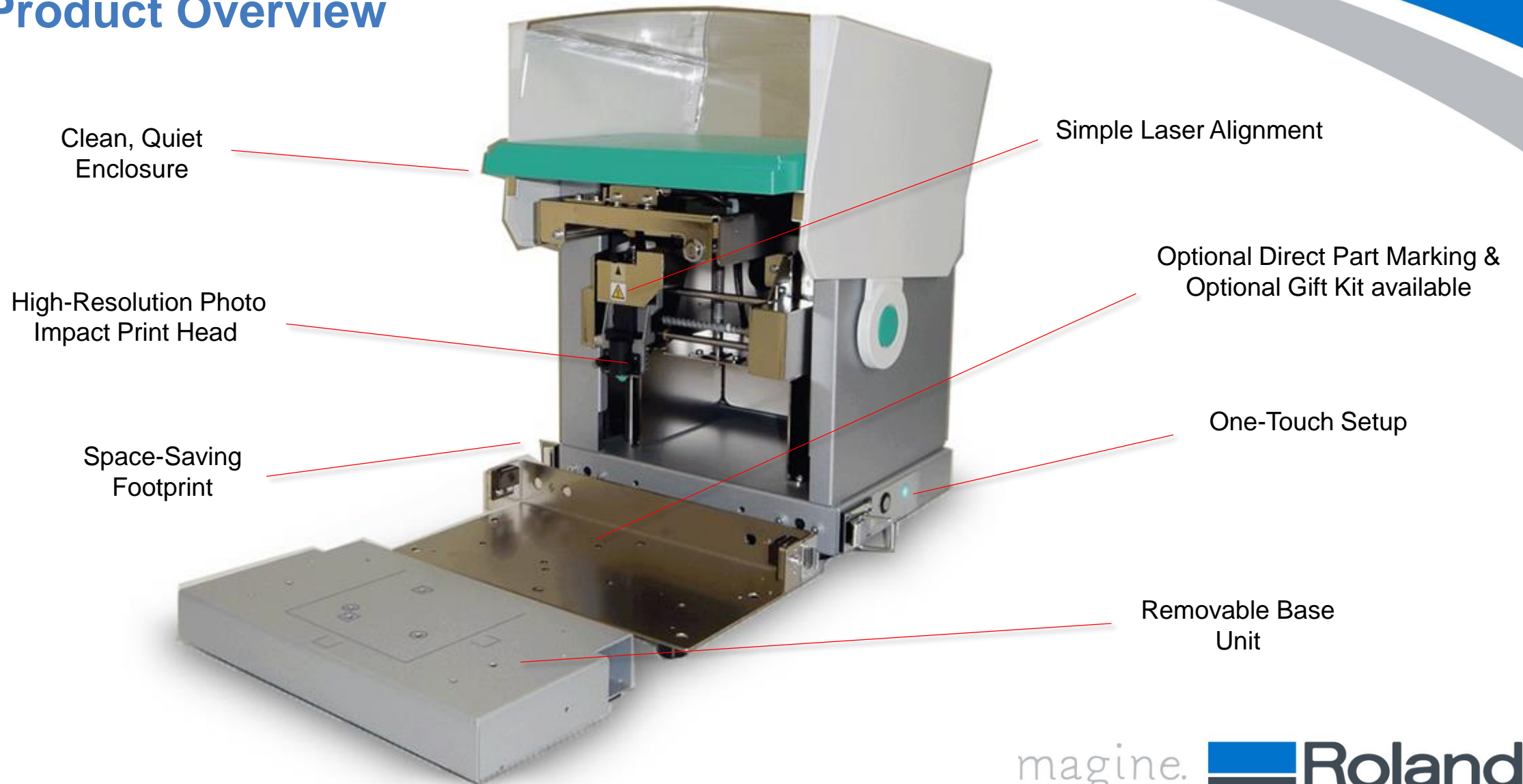
Sales Guide

METAZA

MPX-95

Imagine.  Roland

Product Overview



Reasons to Buy

- 1 Proven Imaging Technology
- 2 Versatile Modular Design
- 3 Application-Specific Accessories
- 4 Intuitive Software Package
- 5 Competitively Positioned



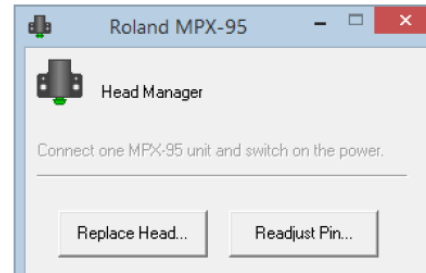
MPX-95 shown above with optional Gift Kit.

1

Proven Imaging Technology

MPX Print Head Technology

- Proven Reliability
- User Replaceable
- Diamond Stylus
- Head Manager Utility Software



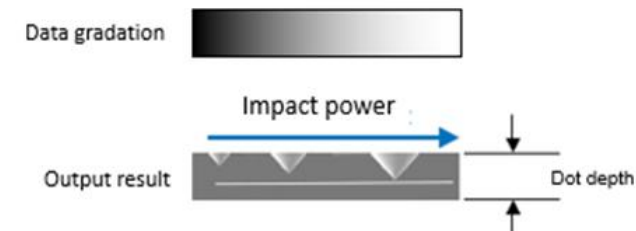
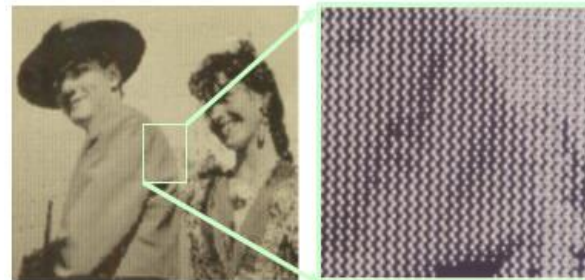
High Resolution

- 529 dpi (High resolution)
- 353 dpi (Photo)
- 265 dpi (Text)
- 058 dpi (Vector)



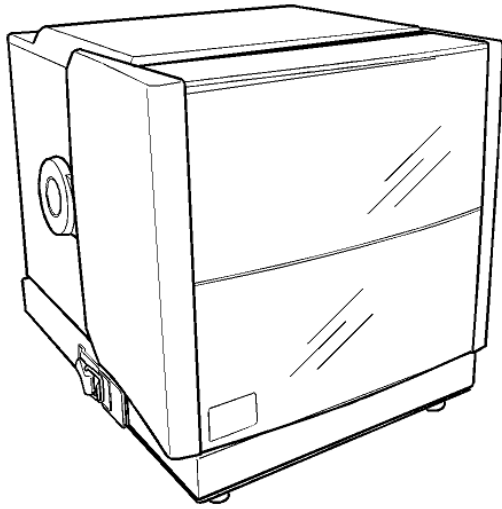
Variable Impact Technology

- Multiple dot sizes in single job
- Smooth Gradients
- Photo Realistic Quality
- Broad Material Compatibility

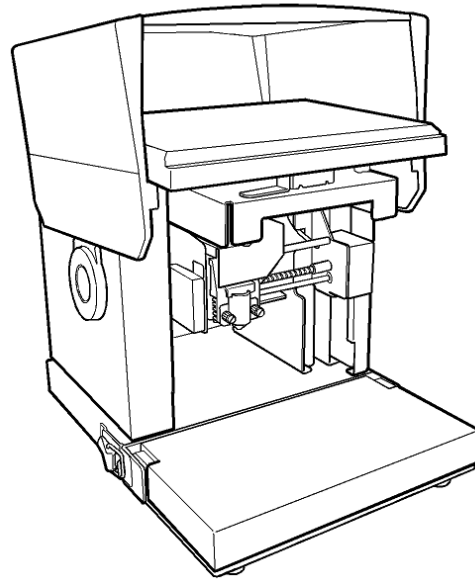


2

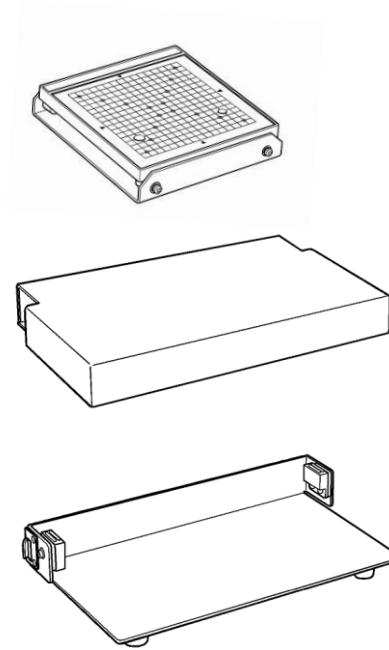
Versatile Modular Design



Compact enclosure for clean, quiet printing.



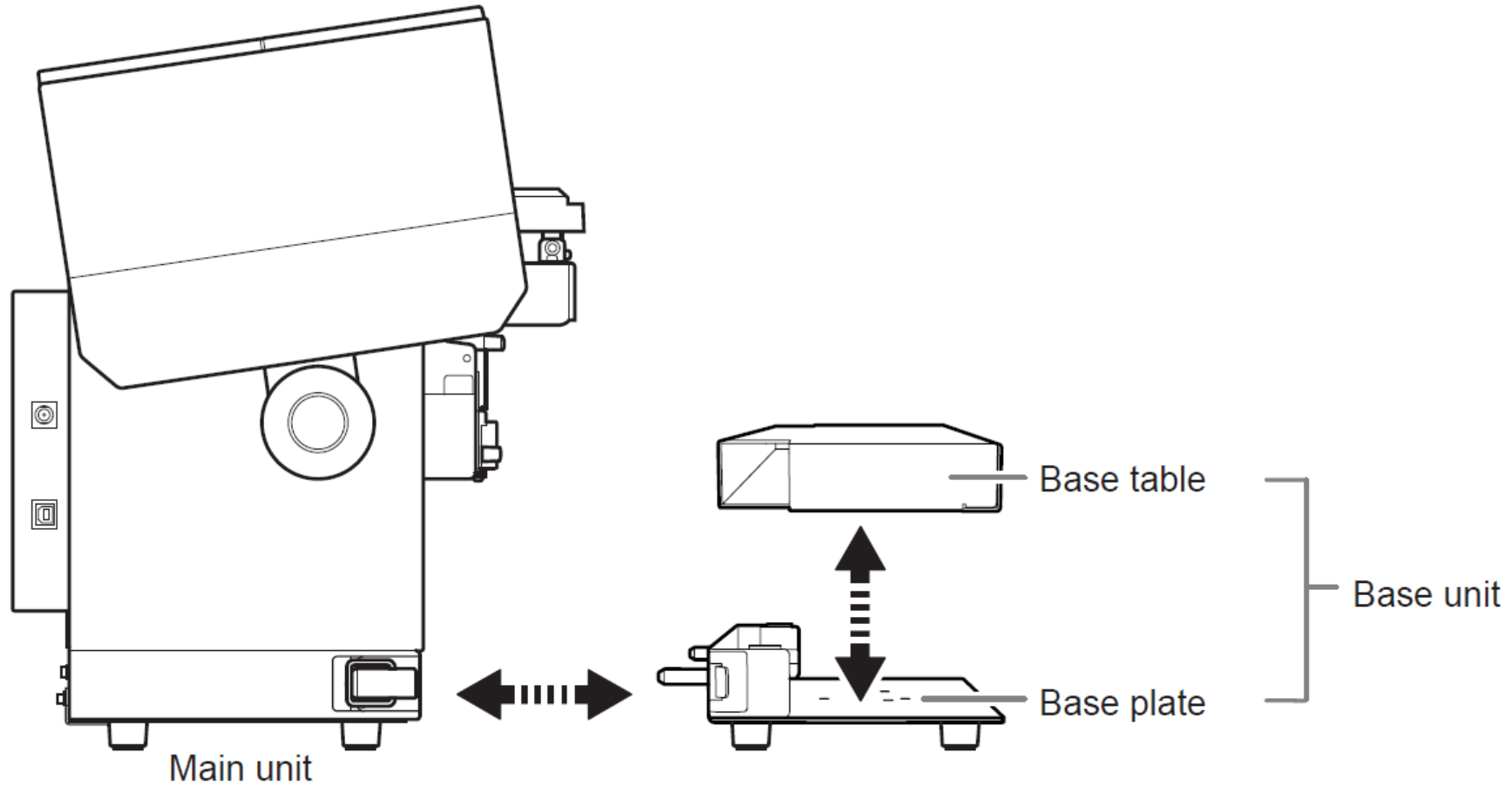
Print with cover open for larger workspace.



Removable base unit for added versatility.

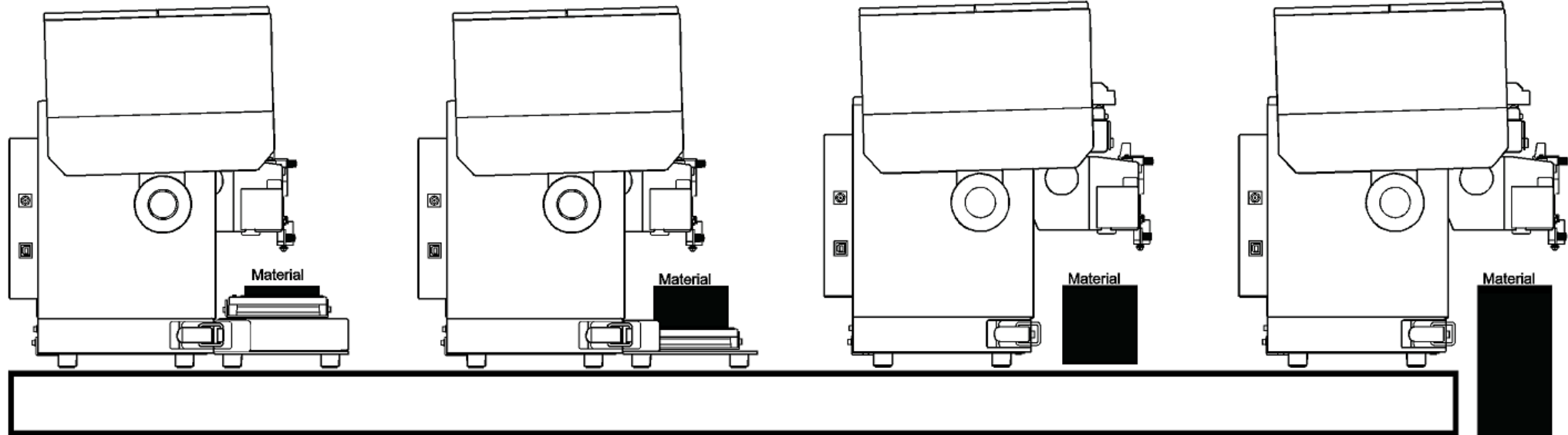
2

Versatile Modular Design



2

Versatile Modular Design



Grid Table
+
Base Table
+
Base Plate

Grid Table
+
Base Plate

No Base Unit

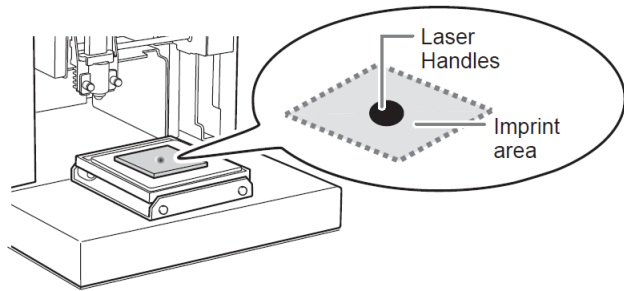
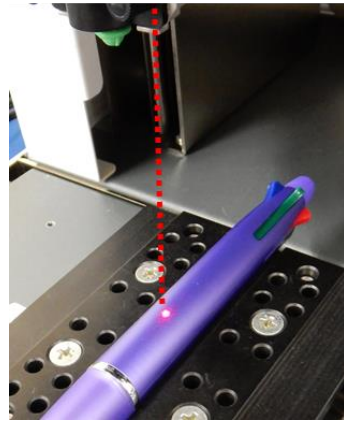
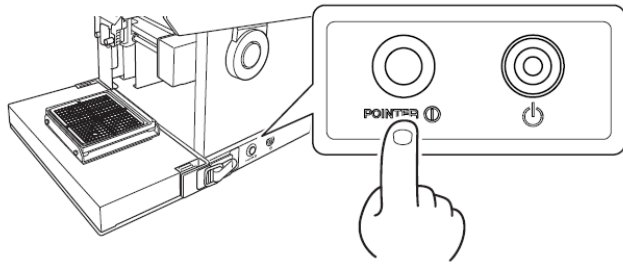
Table Edge

2

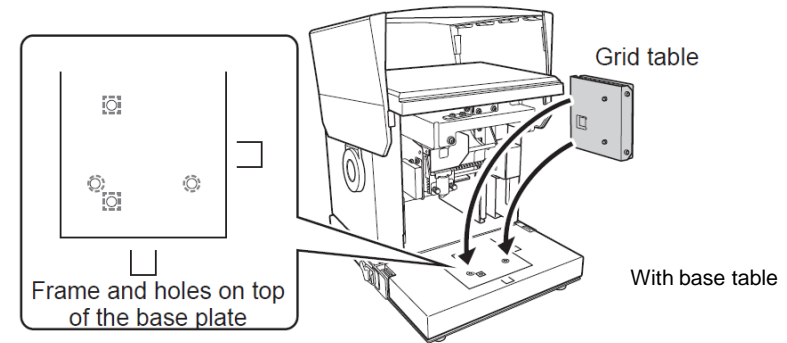
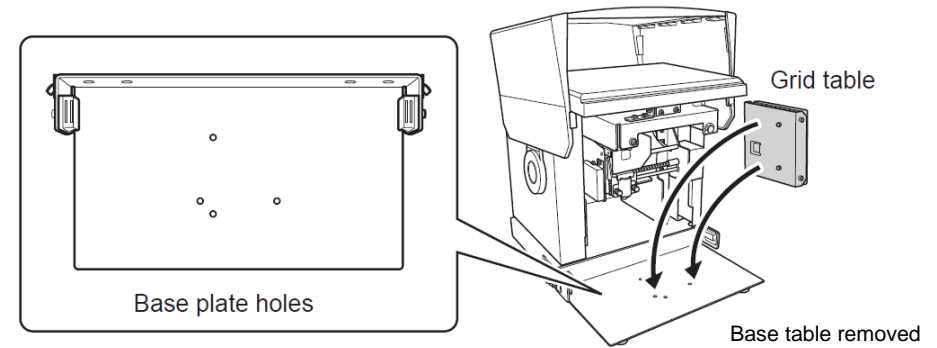
Versatile Modular Design

Built-in Laser Pointer

- Easily align workpieces
- Laser indicates the center of the imprinted area
- Push-button operation



Pin-Guided Table Alignment



3

Application-Specific Accessories



DK-1 DPM Kit (optional)
Direct Part Marking Applications

\$4,495



GK-1 Gift Kit (optional)
Gift & Personalization Applications

\$1,395

3

Application-Specific Accessories

DK-1 DPM Kit

Includes:

- Moveable Center Vise & Clamp Pins
- Pinching Vice
- Flat and Round Head Caps
 - Easily track curved surfaces or slopes (Round head caps).
 - Flat head caps have higher wear resistance and can be used for longer periods.
- 2D Data Code Software Upgrade

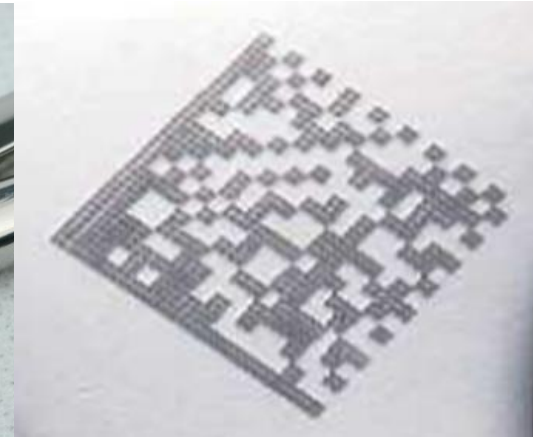
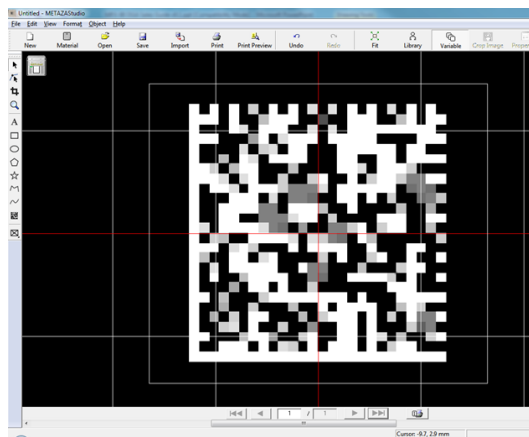


3

Application-Specific Accessories

DK-1 DPM Kit

Unique Device Identification (UDI) & Medical Applications



3

Application-Specific Accessories

DK-1 DPM Kit

General Parts Marking – Plastics and Metals



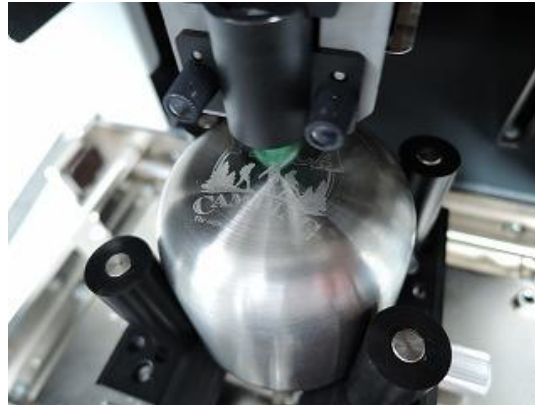
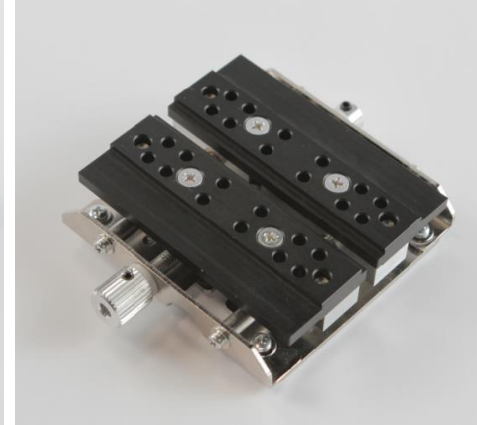
3

Application Specific Accessories

GK-1 Gift Kit

Includes:

- Moveable Center Vise
- Additional Center Vise
- Round Head Caps
 - Easily track curved surfaces or slopes
- Clamp Pins

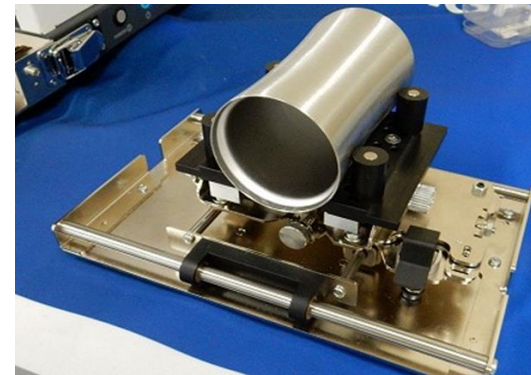
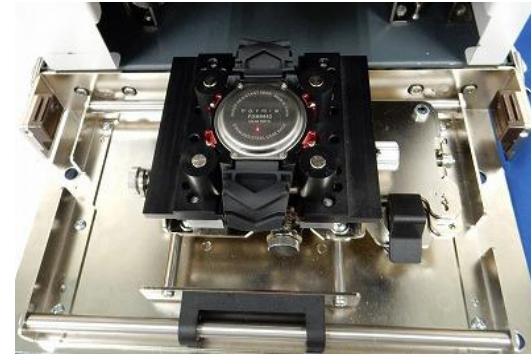
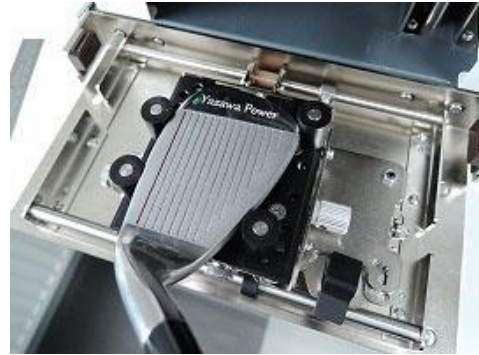


3

Application-Specific Accessories

GK-1 Gift Kit

Gift & Personalization Applications



4

Intuitive Software Package



METAZA Studio

This is a program for creating imprint data. It enables you to import and crop images to imprint, edit and add text, etc.

SFEdit2

This program lets you create and edit stroke fonts. Stroke fonts are line drawings created by automatically extracting the center lines from a TrueType font. You can use the generated stroke fonts as fonts with METAZA Studio.

MPX-95 Head Manager

This is a utility for adjusting the head. Run it when you replace the head or adjust the marking pin.

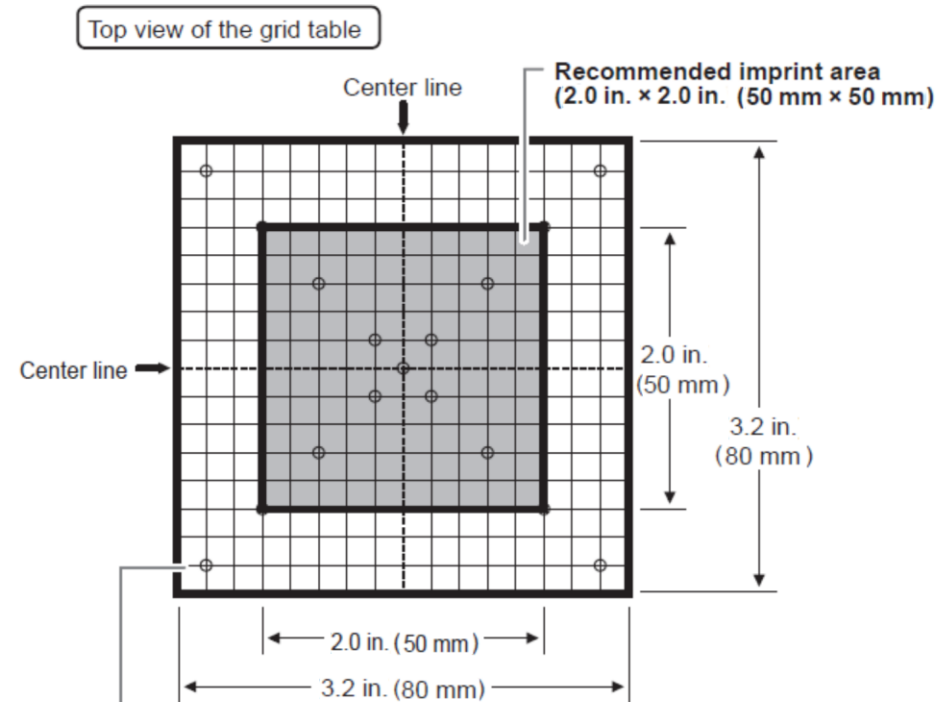
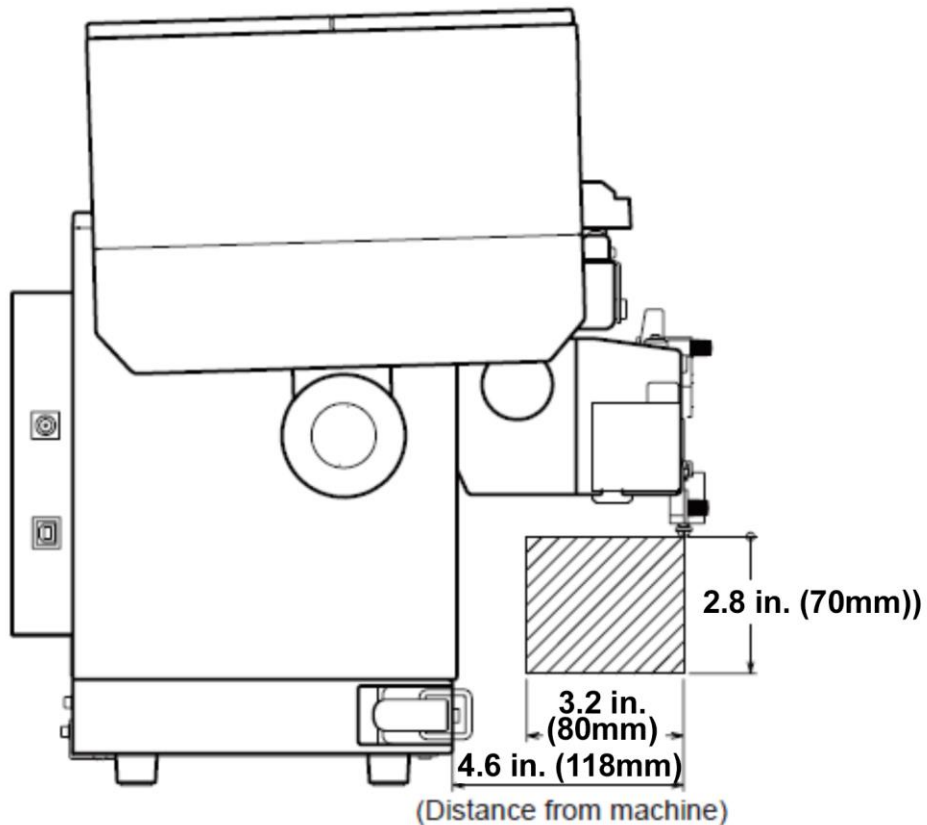
Dr. Engrave

This is text and image imprinting software that lets you create imprint data. You can use TrueType fonts registered in Windows. It also has stroke characters.

Specifications

Printable material	Gold, silver, copper, platinum, brass, aluminum, iron, stainless steel, titanium
Loadable material size	<p>With base table + base plate: Maximum 3.93 in. (width) x 7.87 in. (length) x 1.57 in (thickness) (100 mm x 200 mm x 40 mm), or 7.87 in. (width) x 3.93 in. (length) x 1.57 in (thickness) (200 mm x 100 mm x 40 mm),</p> <p>With base plate only: Maximum 3.93 in (width) x 7.87 in (length) x 2.75 in (thickness) (100 mm x 200 mm x 70 mm), or 7.87 in (width) x 3.93 in (length) x 2.75 in (thickness) (200 mm x 100 mm x 70 mm), *Cover is closed.</p>
Printing area	<p>Maximum printing area: 3.15 in. (W) x 3.15 (D) x 2.75 in (H) (80 mm x 80 mm x 70 mm)</p> <p>Recommended printing area 1.97 in. (W) x 1.97 in (H) x 2.75 (H) (50 mm x 50 mm x 70 mm)</p>
Resolution	High-resolution: 529 dpi, Photo: 353 dpi, Text: 265, Vector: 1,058 dpi
Printing direction	Unidirectional printing or bidirectional printing (Selectable with Windows driver)
Printing speed (default)	Photo: 1.97 in./sec. (50 mm/sec.), High-resolution, Text: 1.3 in./sec. (33 mm/sec.), Vector: .95 in./sec. (24 mm/sec.)
Interface	USB
External dimensions	11.26 in (W) x 15.08 in (D) x 12.13 (H) (286 mm x 383 mm x 308 mm)
Weight	12 kg
Accessories	AC adapter, power cord, test-use printing material, USB cable, CD-ROM, user's manual, etc.

Specifications



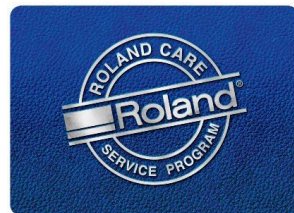
Maximum imprint area (3.2 in. x 3.2 in. (80mm x 80 mm))
Setting configuration through METAZA Driver 2 is required.
If an image exceeds the imprintable area, the print result might become uneven outside of the imprintable area.

Peace of Mind, Reliability and Support



Peace of Mind, Reliability and Support

The MPX-95 offers unmatched reliability and post-sales support that includes a One-Year Trouble-Free Warranty. Enjoy the benefits of certified service engineers committed to ensuring that your device is always up-and-running, plus dedicated online and telephone support specialists ready to answer your questions and concerns.



Thank You

Imagine.  **Roland**