

New Product Information

SOLJET ProII V SC-545EX

Wide Format InkJet Printer / Cutter

Overview

As the latest addition to Roland DGA's wide format printer family, the SC-545EX is the new flagship printer/cutter for the Roland product line. It represents the integration of Roland's experience and knowledge of wide format printing, contour cutting and color expertise.

The PROII V series of printers yield amazing prints by taking advantage of the first RIP created from the ground up for a proven printer, media, and ink configuration. Roland composed VersaWorks™ to be incredibly robust, but also amazingly easy to use.

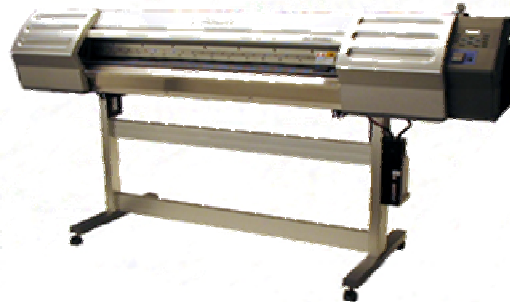
The SC-545EX is a 54 inch wide SOLJET PROII V printer/cutter. New print modes and higher speeds mean that the SC-545EX can print up to 315 sq ft/hr using the new High Speed Banner Mode. Output in High Quality Mode is increased by over 10%.

Highlighted in this overview are the features and improvements that make the SOLJET PROII V SC-545EX an exciting evolution in the Roland DGA family of inkjet products.

These new features include:

- ✚ Max. Print Speed 315 sq ft/hr
- ✚ New Artistic Print Mode
- ✚ Speed Increase in all Print Modes

- ✚ Integrated Heater Control Unit
- ✚ Selectable Media Counter Function
- ✚ VersaWorks™ RIP Software



SC-545EX front view

New Features

Max. Print speed now 315 sq ft/hr

The SC-545EX has been engineered for serious production with a High Speed Banner mode that yields quality prints at up to 315 sq ft/hr at 450x360 dpi.

New Artistic Print Mode

The SC-545EX features a new Artistic print mode that yields true 1440x1440 dpi prints while taking advantage of variable dot technology and the powerful new Roland VersaWorks RIP.

Speed Increase in all Print Modes

By combining the capabilities of Roland VersaWorks and the SC-545EX, Roland was able to increase the print speeds in all print modes between 11 and 20 sq ft/hr. This represents an overall speed increase of 30% in specified modes.

Banner Production		
Print Mode	Passes	Print Speed
High Speed, 450x360	2 pass	315 sq ft/hr
Standard, 720x720	8 pass	86 sq ft/hr
High Quality, 720x1440	8 pass	56 sq ft/hr
High Quality, 1080x1080	9 pass	43 sq ft/hr

Vinyl Production		
Print Mode	Passes	Print Speed
High Speed, 360x720	4 pass	170 sq ft/hr
Standard, 360x720	8 pass	86 sq ft/hr
High Quality, 720x1440	8 pass	56.7 sq ft/hr
Artistic, 1440x1440	16 pass	35 sq ft/hr

Integrated Heater Control Unit

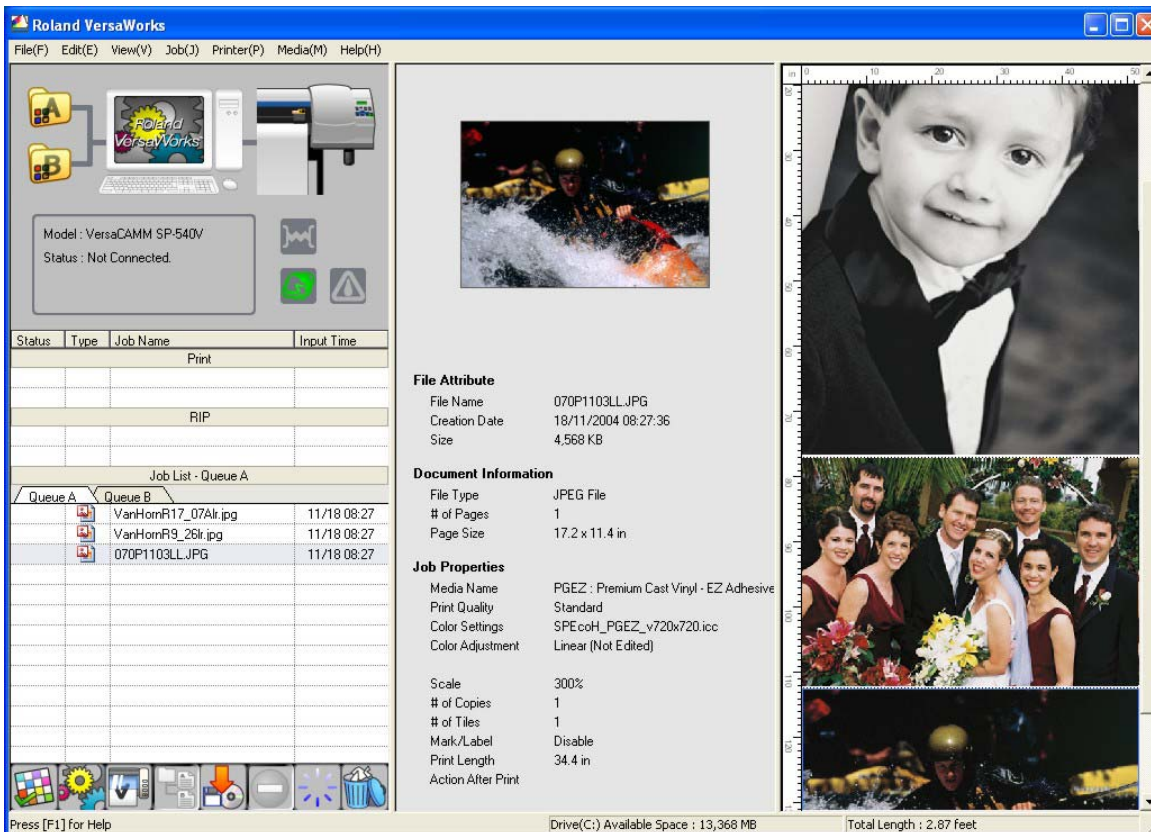
The heating control unit for the SC-545EX is now installed in the front panel of the printer. This new integrated feature does away with the need to install an additional device or bother with external tubing, cables or connectors. The integrated heater control unit draws power from the SC-545EXs existing power supply. The unit's location in the front panel makes it easy to view and configure.

Selectable Media Counter Function

A media counter has been added to the new SC-545EX allowing users to enter the length of a new roll of media into the printer's control panel. The counter then tracks the amount of media used from that roll. The user can then check the amount of media left on a roll before sending a print to the SC-545EX. The user can also print out the remaining length information on the leading edge of a roll before removing it from the printer. This feature allows you to easily remember how much media is remaining on partial rolls.

VersaWorks™ Software RIP Included

The SC-545EX was developed in tandem with Roland VersaWorks™. This all-new RIP was composed by Roland to ensure exceptional production output with unmatched ease of use. VersaWorks is built upon the genuine Adobe® PostScript® CPSI 3016™ engine. It supports true Adobe® PostScript® 3 and can be used on Windows XP and 2000 operating systems.



Summary

The SC-545EX is an enhanced, feature rich addition to the SOLJET PRO// V product line. Built upon the highly successful print/cut concept of the SC-540, the SC-545EX adds an integrated heater control unit, new high speed print modes, and an all new media usage counter. Roland VersaWorks™, a Raster Image Processor tailor made for the SC-545EX enables the operator to benefit from the full capabilities of the Roland SC-545EX