

Special Color Ink Guide

WH MT

Target Models:

- **XR-640**
- **VS-640i/540i/300i**
- **VG-640/540**
- **BN-20**

Roland VersaWorks
RIP & PRINT MANAGEMENT SOFTWARE

Roland VersaWorks Dual
RIP & PRINT MANAGEMENT SOFTWARE

Be sure to read this manual when using white ink or metallic silver ink.

This document describes the characteristics of white and metallic silver inks as well as important notes, maintenance, and printing method using these inks. For other matters, refer to the setup guide or user's manual for the printer you are using.

Thank you very much for purchasing this product.

- To ensure correct and safe usage with a full understanding of this product's performance, please be sure to read through this manual completely and store it in a safe location.
- Unauthorized copying or transferal, in whole or in part, of this manual is prohibited.
- The contents of this operation manual and the specifications of this product are subject to change without notice.
- The manual and the product have been prepared and tested as much as possible. If you find any misprints or errors, please inform us.
- Roland DG Corp. assumes no responsibility for any direct or indirect loss or damage that may occur through use of this product, regardless of any failure to perform on the part of this product.
- Roland DG Corp. assumes no responsibility for any direct or indirect loss or damage that may occur with respect to any article made using this product.

Copyrights and property of this software and this manual belong to Roland DG Corp. No part of this software or publication may be reproduced, stored in a retrieval system, or transmitted, in any form or by any means, electronic, mechanical, photocopy, recording or otherwise, without the prior written permission of the publisher.

Roland VersaWorks and Roland VersaWorks Dual are registered trademarks of Roland DG Corp. Windows® is a registered trademark or trademark of Microsoft® Corporation in the United States and/or other countries.

Pentium® is a registered trademark of Intel Corporation in the United States.

Macintosh is a registered trademark of Apple Inc.

Adobe, PostScript, PostScript 3, and Illustrator are either registered trademarks or trademarks of Adobe Systems Incorporated in the United States and/or other countries. ©2007 Adobe Systems Incorporated. All rights reserved.

PANTONE® Colors displayed in the software application or in the user documentation may not match PANTONE-identified standards. Consult current PANTONE Color Publications for accurate color. PANTONE® and other Pantone trademarks are the property of Pantone LLC. ©Pantone LLC, 2012.

Pantone is the copyright owner of color data and/or software which are licensed to Roland DG Corp. to distribute for use only in combination with Roland VersaWorks and Roland VersaWorks Dual. PANTONE Color Data and/or Software shall not be copied onto another disk or into memory unless as part of the execution of Roland VersaWorks or Roland VersaWorks Dual.

Other company names and product names are trademarks or registered trademarks of their respective holders.



Contents

Contents	1
Chapter 1 Getting Ready	3
What This Document Assumes and Related Manuals	4
What This Document Assumes	4
Related Manuals	4
Important Points to Know Before Performing Operations	5
Important: Characteristics of Inks and Important Notes	5
Using the Middle Pinch Rollers in Printing and Cutting	5
When Performing Pullback Printing	6
Important Notes on Using Media Take-Up System	6
Important Notes in Using Transparent Media	7
Precautions When Using an Optional Dryer	7
Blend Printing and Layered Printing	8
Creating Printing Data	10
Basic Approach for Creating Printing Data	10
Creating Printing Data	10
Chapter 2 Printing	17
Introduction	18
Before You Start Printing	18
Media	18
Print Modes	19
Using Metallic Silver	19
Printing Settings	20
Printing a Metallic Color Chart	20
Printing Only with Metallic Silver Ink	22
Blend Printing (Metallic Silver + CMYKcLmLk)	24
Layered Printing (Metallic Silver > CMYKcLmLk)	26
Layered Printing (CMYKcLmLk > Metallic Silver)	28
Printing Only with White Ink	31
Printing with White and CMYKcLmLk Ink	33
Printing with White, Metallic Silver, and CMYKcLm Ink	35
Starting the Print Operation	39
Starting the Print Operation	39
Chapter 3 Advanced	41
Pullback Printing	42
Pullback Printing (White > Metallic silver/CMYKcLm)	42
Pullback Printing (Metallic silver/CMYKcLm > White)	49
Metallic Texture Printing	56
What is Metallic Texture Printing?	56
Checking the Metallic Texture Pattern	56
Creating Metallic Texture Printing Data	58
Advanced Operations	60
Making Printing Settings for Each Job	60
Generating Special Color Plates	61
Correcting the Position of Special Color Plates	62
Correcting the Size of Special Color Plates	64

Contents

Maintenance.....	66
Message for Ink Circulation	66
When Uneven Colors and Dot Drop-Out Cannot be Corrected	66

Chapter 1 Getting Ready

What This Document Assumes and Related Manuals.....	4
What This Document Assumes	4
Related Manuals.....	4
Important Points to Know Before Performing Operations	5
Important: Characteristics of Inks and Important Notes	5
Using the Middle Pinch Rollers in Printing and Cutting	5
When Performing Pullback Printing.....	6
Important Notes on Using Media Take-Up System.....	6
Important Notes in Using Transparent Media	7
Precautions When Using an Optional Dryer.....	7
Blend Printing and Layered Printing	8
Creating Printing Data.....	10
Basic Approach for Creating Printing Data.....	10
Creating Printing Data	10

What This Document Assumes and Related Manuals

1

Getting Ready

What This Document Assumes

- This guide is for use with both Roland VersaWorks and Roland VersaWorks Dual.
- “Roland VersaWorks” and “Roland VersaWorks Dual” are both written as “VersaWorks” in this guide.
- Before performing any operations described in this guide, make sure that all the following preparations are complete.
 - Hardware setup, such as the assembly and installation of the printer.
 - Software setup, such as installing VersaWorks on your computer and connecting the computer to the printer.
 - Learning the operation of the printer (Refer to the manual included with the printer for more on the operation of the printer.)
- This guide is for use with the following printers. Ignore parts of this manual regarding inks not being used.
 - Printers equipped with both white and metallic silver inks
 - Printers equipped with white ink only
 - Printers equipped with metallic silver ink only

Related Manuals

Refer to the following manuals for information on basic and advanced VersaWorks operations.

Help

This manual is included with the software. Information on all software functions, from instructions for basic usage of software to detailed instructions for settings, is provided in this guide.

Important Points to Know Before Performing Operations

1

Getting Ready

Important: Characteristics of Inks and Important Notes

The usage and handling of white ink and metallic silver ink involve some important considerations that do not apply to ink of other colors. Be sure to familiarize yourself with the characteristics of the inks before you use them.

White Ink and Metallic Silver Ink Precipitate.

If they are allowed to stand, the precipitates in the inks may solidify and cause clogging of the print heads or other malfunctions. Be sure to observe the cautions in this manual.

Maintenance Must be Performed.

- Always keep the main power switched on. If the main power is switched off, the automatic maintenance function stops working, and may result in malfunction.
- We recommend operating the printer at least once a week.
- If the printer is left unused for a long period of time, ink precipitation may occur, causing unstable ink discharge, which may result in dot drop-out, etc. In such cases, the precipitated and solidified ink needs to be discharged. Refer to the user's manual of the printer you are using to implement proper cleaning.
- If cleaning fails to resolve issues such as dot drop-out, contact your authorized Roland DG Corp. dealer.

Drying Inks

- After output, allow the ink to dry sufficiently. Note that white ink and metallic silver ink in particular require printing at a high density, and so are more difficult to dry than other inks.
- We recommend using an auxiliary drying unit.
 - * Optional dryers such as the BN-20 cannot be used with some models.
☞ P. 7 "Precautions When Using an Optional Dryer"

We Strongly Recommend Performing Lamination.

Depending on conditions, the weatherability of white ink and metallic silver ink may be inferior to that of other inks. Therefore, laminating is strongly recommended.

Using the Middle Pinch Rollers in Printing and Cutting

- * There are no middle pinch rollers on BN-20 printers.

Because white ink and metallic silver ink are difficult to dry, the middle pinch rollers will smudge the printed surface when printing and cutting are performed. When you perform printing and cutting using metallic silver ink and/or white ink, secure the media in place using only two pinch rollers on the right and left. However, some types of media may float partially, causing adverse effects on printing, feeding, and/or cutting. Check the media before use.

When Performing Pullback Printing

What is Pullback Printing?

Pullback printing refers to a printing method in which an already printed media is pulled back to the original position once, and then overprinting is performed. For example, the white ink or metallic silver ink undercoat is printed first, and then another ink color is printed on top.

Allow the Ink to Dry Thoroughly.

- Dry the ink sufficiently before you perform dual-pass printing with the next color. Performing dual-pass printing before the ink has dried enough may make attractive printing impossible or cause problems such as reduced weatherability.
- Drying time differs according to various conditions, but as a general guide you should use an auxiliary drying unit (DU Series) and also allow the media to stand for an additional 15 minutes.
 - * Optional dryers such as the BN-20 cannot be used with some models.
- In particular, when you are pullback printing a white or metallic silver undercoat with other colors, allow the undercoat to dry thoroughly before you overprint it. If the undercoat is not dry enough, differences in dryness may cause variations in the other overprinted colors.

Using the Middle Pinch Rollers

- * There are no middle pinch rollers on BN-20 printers.

The middle pinch rollers may smudge the printed surface when the media is pulled back. When you perform pullback printing, we recommend securing the media in place using only two pinch rollers (one on the left and one on the right).

Select "TU2" when Using the Media Take-Up System

When the media take-up system is used for pullback printing, select "TU2" in "SETUP SHEET." For more information, refer to "Using Media Take-up System" in the user's manual of the printer you are using.

Important Notes on Using Media Take-Up System

- * The media take-up system is available as standard equipment model or optional equipment.
- * Optional media take-up systems cannot be used with the BN-20.

Since metallic silver ink and white ink are difficult to dry, using the media take-up system may cause the media and/or the printed surface to be smudged depending on the type of media used. If you use the media take-up system with the middle pinch rollers removed, some types of media may not be taken up normally and/or cause adverse effects on printing, feeding, and/or cutting quality as well as partial float of the media. Be sure to use the media take-up system only after confirming the nature and compatibility of your media.

Important Notes in Using Transparent Media

Loading Transparent Media

- * This section does not apply to the BN-20, which has no [EDGE DETECTION] menu.
- Set the [EDGE DETECTION] menu item to "DISABLE." Transparent media cannot be loaded unless this setting is made.
- Ensure a margin of at least 75 mm from the leading edge of the media to the printing- or cutting-start location.

Important Notes on the Amount of Media Remaining

- When you use transparent media, the presence of media cannot be detected. In such cases, printing operation does not stop when the media runs out, and there is a chance that the platen or the like may become soiled by ink or that ink may get inside and damage the machine.
- If media runs out while printing is in progress, immediately stop printing.

Using the Middle Pinch Rollers

- * There are no middle pinch rollers on BN-20 printers.

The middle pinch rollers will leave slight traces of pressing on the media, and on transparent media this damage can be very noticeable. Also, the middle pinch rollers will smudge the printed surface when transparent media is pulled back after printing. When using transparent media, secure the media in place using only two pinch rollers on the right and the left. However, some types of media may float partially, causing adverse effects on printing, feeding, and/ or cutting. Check the media before use.

Automatic Crop-Mark Detection

Automatic crop-mark detection may not be possible for some media, such as transparent media. In such cases, perform alignment manually.

Precautions When Using an Optional Dryer

- * Optional dryers are optional items.
- * Optional dryers cannot be used with the BN-20.

Use an Optional Dryer we Recommend (DU Series).

For information on dryer models, check with the authorized Roland DG Corp. dealer from whom you purchased the machine, or visit the Roland DG Corp. website (<http://www.rolanddg.com/>).

Select "ENABLE" in the [OPTION DRYER] Menu.

This setting is required to operate the printer together with an optional dryer (when using a recommended DU Series dryer).

Blend Printing and Layered Printing

- * If equipped with both white and metallic silver ink, Lk (Light Black) ink is not used. Ignore “Lk” in this manual.

Blend printing and layered printing are printing methods that use metallic silver ink. Blend printing and layer printing are different from each other in terms of how to print, as is CMYKLcLmLk printing in some areas. Confirm the color of each method by actually printing the data and using the results that match the intended purpose.

- ☞ P. 24 “Blend Printing (Metallic Silver + CMYKLcLmLk)”
- ☞ P. 26 “Layered Printing (Metallic Silver > CMYKLcLmLk)”
- ☞ P. 28 “Layered Printing (CMYKLcLmLk > Metallic Silver)”
- * Blend printing is required for “Printing with White and CMYKLcLmLk Ink” (P. 33).

MEMO

In performing blend printing or layered printing, you can specify colors from the metallic color special colors library. However, if you specify metallic colors with the same names for the blend print and the layered print, **the tones of the colors will be different.** We recommend that you check the tones of the colors by performing a test printing or by printing out the metallic color chart.

Seeing the metallic color chart for the layered print, you may feel a slight inconsistency between the names and the tones of the colors. This is because the colors listed in the metallic color chart are named based on the colors for blend printing.

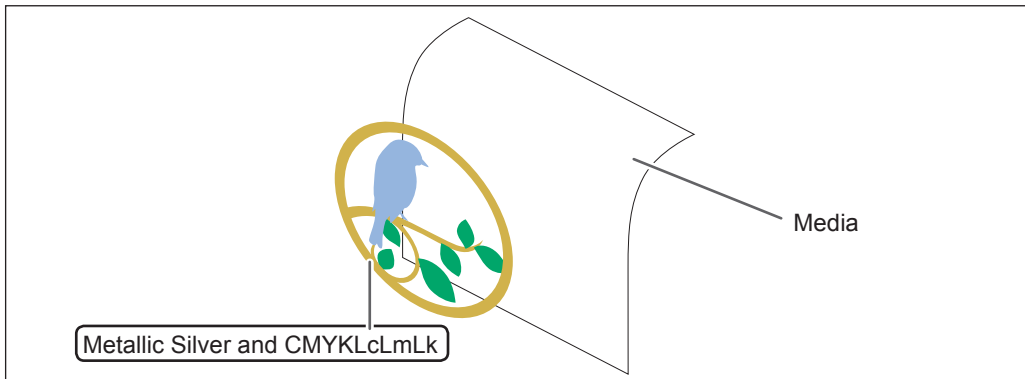
- ☞ P. 20 “Printing a Metallic Color Chart”

Blend Printing

The metallic silver ink and the CMYKLcLmLk ink are blended to form a single layer for printing.

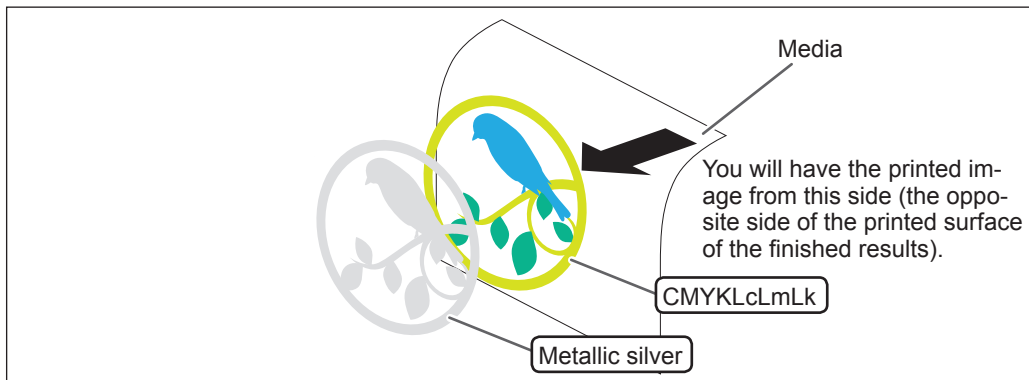
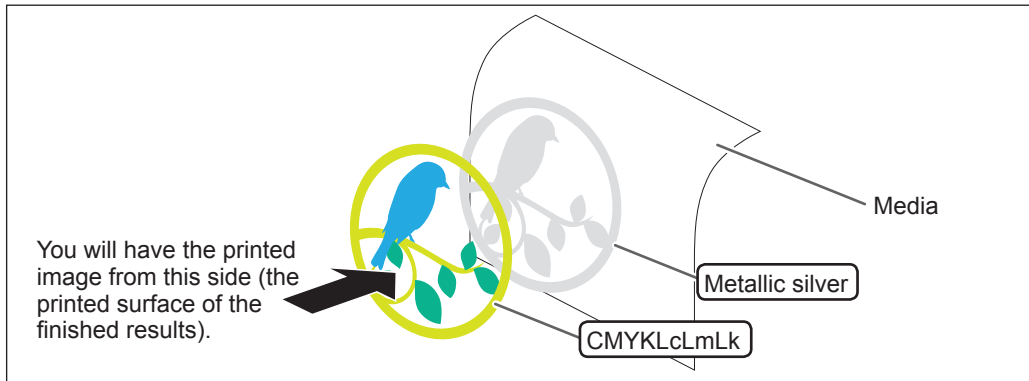
- ☞ P. 24 “Blend Printing (Metallic Silver + CMYKLcLmLk)”

(Image of printing method)



Layered Printing

The metallic silver ink and the CMYKLcLmLk ink are separated into different layers and printed. Select the printing order of the layers according to how the finished product should look. (Image of printing method)



Creating Printing Data

1

Getting Ready

Basic Approach for Creating Printing Data

When Using White Ink

Specify the spot color named "RDG_WHITE" to the areas you want to print using the white ink.

When Using Metallic Silver Ink

When you print using metallic silver ink, you can create the printing data according to the two methods below.

- **Specify the spot color so as to use only the metallic silver ink.**
Specify the spot color named "RDG_MetallicSilver" to the areas you want to print using the metallic color ink.
- **Use the exclusive metallic color special colors library.**
From the exclusive metallic color special colors library, select the metallic color to be used, which is a combination color of CMYKLCmLk ink and metallic silver ink.

Creating Printing Data

This section describes how to create printing data using the white ink and metallic silver ink.

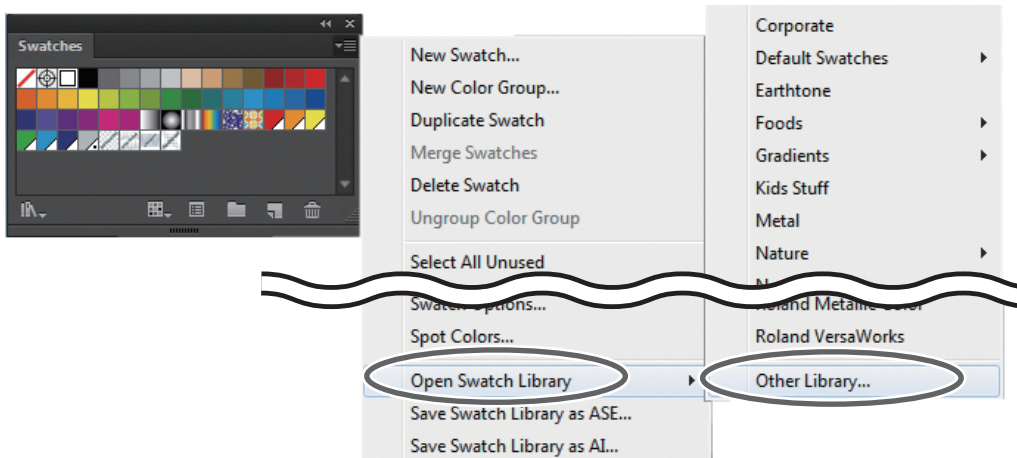
The program used to create the printing data is Adobe Illustrator CS6 in this section. For detailed information on drawing methods and how to work with palettes, refer to the documentation or online help for Adobe Illustrator CS6. If you are using another version of Adobe Illustrator, operations may be somewhat different from those explained here.

1. Open the exclusive swatch library and color library.

① At the swatch palette menu, select [Open Swatch Library], then [Other Library].

The "Open" window (or "Select Library" window) appears.

- * The swatch palette is displayed by going to the menu and selecting [Window], then [Swatch].



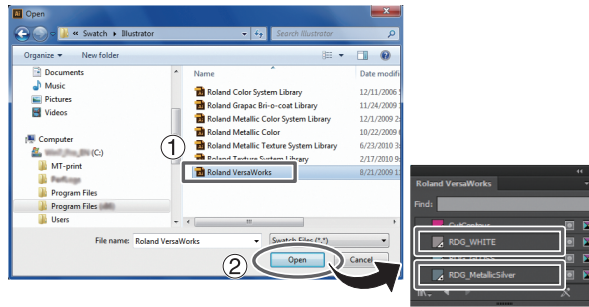
2 Open the exclusive swatch library.

- ① Open the folders in the order of [Computer] → [OS (C:)] → [Program Files] → [Roland VersaWorks] (or [Roland VersaWorks Dual]) → [Swatch] → [Illustrator], and then select “Roland VersaWorks.ai.”

Depending on the settings of your computer, the extension “.ai” might not be shown.

- ② Click [Open].

The swatch library containing “RDG_MetallicSilver” and “RDG_WHITE” is displayed.



3 Open the exclusive swatch library.

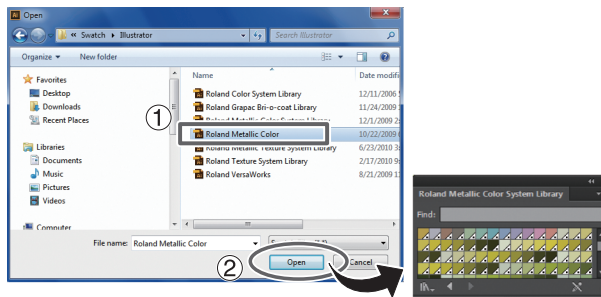
* This operation is not required if metallic silver is not being used.

- ① Open the same folders as in step 2, and then select “Roland Metallic Color System Library.ai.”

Depending on the settings of your computer, the extension “.ai” might not be shown.

- ② Click [Open].

The swatch library containing the “metallic color” created by mixing the metallic silver ink and CMYKLcLmLk ink is displayed.



MEMO

By saving the “.ai” file selected in steps 2 and 3 into the folder below, you can register each swatch library to the Adobe Illustrator library. Once the registration is performed, you can open the library directly from the swatch palette menu, eliminating the need to search the file every time you start Adobe Illustrator.

C:\Program Files\Adobe\Adobe Illustrator CS6\Presets\(\language abbreviation)\Swatches

- * “C” is the name of your computer's local disk.
- * The language abbreviation differs depending on the language used.
- * Depending on the version of Illustrator used, “\Preset\Swatch” may be used instead of “\Presets\(\language abbreviation)\Swatch.”

2. Create the illustration, and specify the spot color that matches the color you want to print.

1 Create the illustration.

Be sure to draw the illustration in the CMYK mode.

2 Specify each spot color that matches the color you want to print.

Desired ink or color	Spot color name
Metallic silver ink	RDG_MetallicSilver
White ink	RDG_WHITE
Metallic color (Metallic silver/CMYKLcLmLk combination color)	RVW-MT-Silver, RVW-MT-Bronze, etc.



MEMO

Using the metallic silver ink, you can perform blend printing and the layered printing by combining the ink with the CMYKLcLmLk ink.

☞ P. 8 "Blend Printing and Layered Printing"

3. Create the PS (PostScript) file.

* When using VersaWorks Dual, saving the file as a PDF file rather than a PS file is recommended.

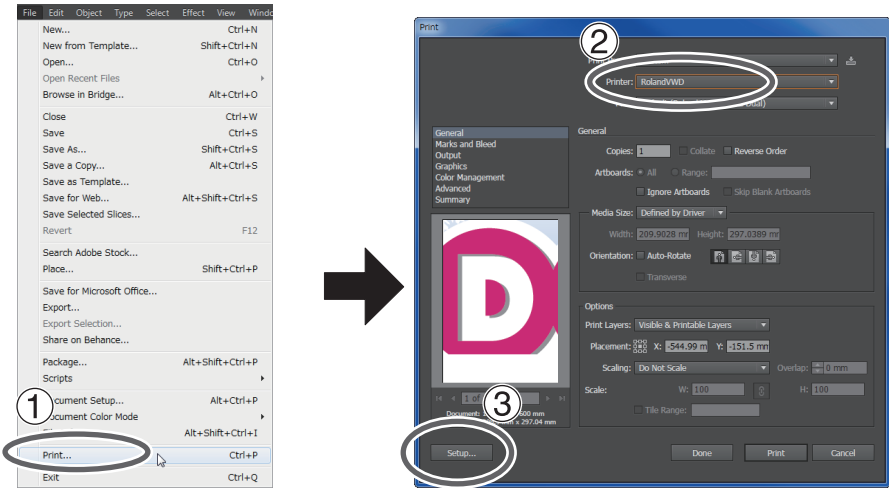
1 Select [Roland VWD] or [Roland VW].

1 Select [Print] from the [File] menu.

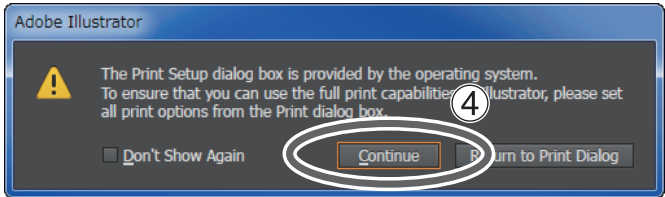
2 Select [Roland VW].

When a nickname is set, or when more than one printer is connected, select "Roland VW_(the nickname of the printer used for output)."

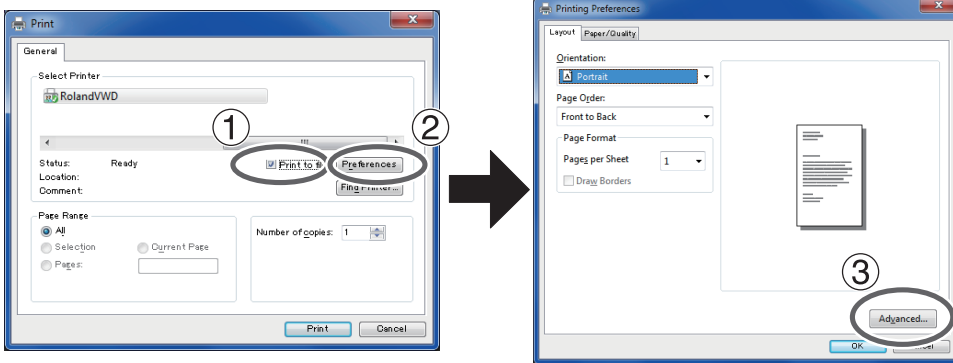
3 Click [Setup].



4 Click [Continue].

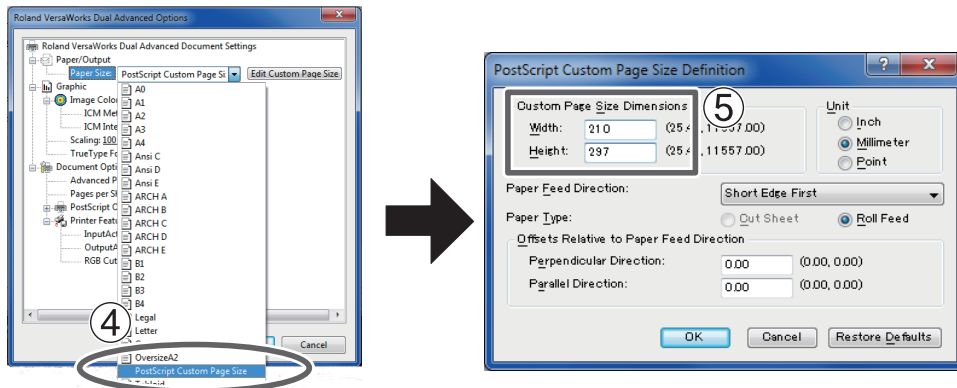


- 2 Set the page size of the output data.
 - 1 Turn on the [Print to file] option.
 - 2 Click [Preferences].
 - 3 Click [Advanced] in the [Layout] tab.



- 4 Click the down arrow to the right of the [Paper Size] box, and then click [PostScript Custom Page Size] from the list that appears.
- 5 For “Custom Page Size Definitions,” enter the values in the “Width” and “Height” fields.

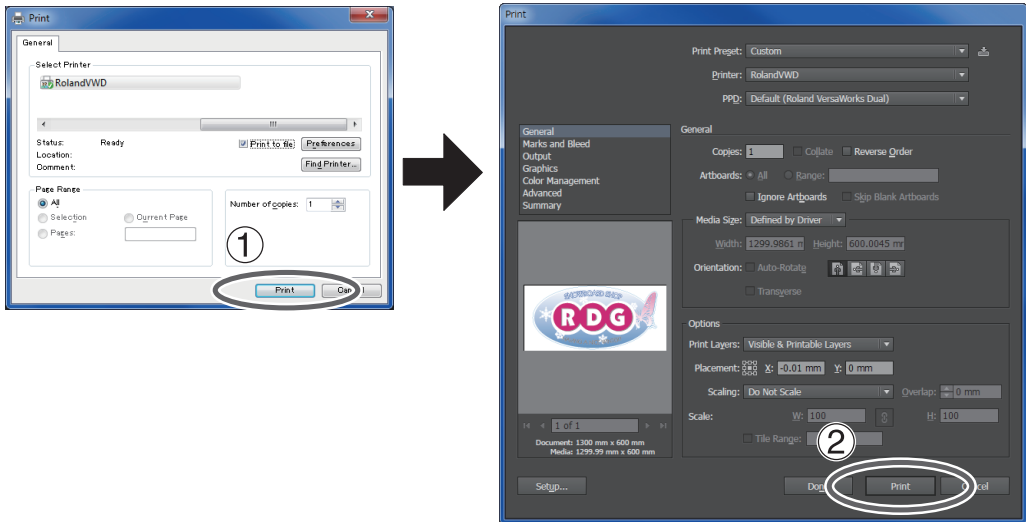
Enter values for the same size as the illustration you created in step 2.



- 3 Click [OK] three times to close the “PostScript Custom Page Size Definition,” “Roland VersaWorks Dual Advanced Options,” and “Printing Preferences” dialog boxes. The “Print” dialog box returns.

4 Output the data as a file.

- 1 Click [Print].
- 2 Click [Print].

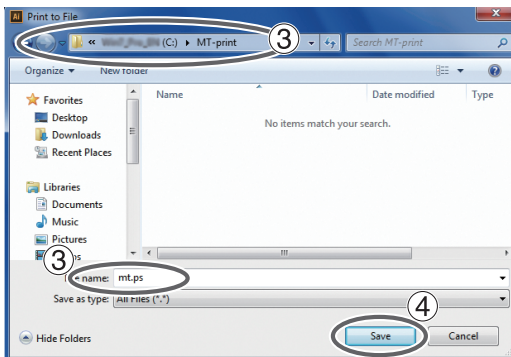


3 Specify the destination and file name.

Example: "C:\MT-print" for the folder to save to, and "mt.ps" as the file name

4 Click [Save].

The image is saved in the specified folder as a PS file.



Chapter 2 Printing

Introduction	18
Before You Start Printing	18
Media	18
Print Modes	19
Using Metallic Silver	19
Printing Settings	20
Printing a Metallic Color Chart	20
Printing Only with Metallic Silver Ink	22
Blend Printing (Metallic Silver + CMYKLcLmLk)	24
Layered Printing (Metallic Silver > CMYKLcLmLk)	26
Layered Printing (CMYKLcLmLk > Metallic Silver)	28
Printing Only with White Ink	31
Printing with White and CMYKLcLmLk Ink	33
Printing with White, Metallic Silver, and CMYKLcLm Ink	35
Starting the Print Operation	39
Starting the Print Operation	39

Before You Start Printing

- **Remove just the white and metallic silver ink cartridges or pouch trays, shake them 50 times (about 20 seconds), and then reinsert the cartridges or pouch trays.**
- **Shaking each time is unnecessary for ink cartridges other than white and metallic silver. However, be sure to shake new ink cartridges when installing them.**

If ink components precipitate, it will not be possible to print with correct colors. So that the ink mixes well, shake the cartridge or the pouch tray horizontally with a stroke length of 5 cm from each end of the cartridge or pouch tray.

The ingredients in white and metallic silver inks tend to settle. Each day, before starting the day's operations, be sure to carry out the above steps. Allowing the ink to stand without carrying out these steps can cause the settled material to harden, resulting in malfunction or other problems.

Note: If you are using TrueVIS Series products

- **Do not remove the ink pouches. Shake the entire pouch tray. Removing the ink pouches may lead to the ink leaking.**
- **Before shaking an ink pouch, wipe off any ink from around the mouth of the ink pouch. If you do not wipe off the ink, it may splatter when you shake the pouch tray.**
- **When you have finished mixing the ink, reinsert the pouch tray immediately. Taking time to reattach the pouch will adversely affect the ink path.**

Media

You can select media from different types of paper in order to meet your needs. Before selecting media, be sure to perform trial printing to check whether satisfactory output quality is obtained.

Print Modes

When printing on media with this machine, you need to set the print mode based on the type of ink, printing method, and the side from which the printed image is seen (from the printed surface or from opposite side of the printed surface).

* **If equipped with both white and metallic silver ink, Lk (Light Black) ink is not used. Ignore “Lk” in this manual.**

Color of ink used and printing method	Print mode	Page
Printing only with CMYKLcLmLk	CMYKLcLmLk(v)	-
Printing only with metallic silver	MetallicSilver(v)	P. 22
Blend printing (Metallic silver + CMYKLcLmLk)	CMYKLcLmLkMt(v)	P. 24
Layered printing (Metallic silver → CMYKLcLmLk)	Mt -> CMYKLcLmLk(v)	P. 26
Layered printing (CMYKLcLmLk → metallic silver)	CMYKLcLmLk -> Mt(v)	P. 28
Printing only with white ink	White(v)	P. 31
Printing with white and then CMYKLcLmLk	W -> CMYKLcLmLk(v)	P. 33
Printing with CMYKLcLmLk and then white	CMYKLcLmLk -> W(v)	P. 33
Printing with white and then metallic silver + CMYKLcLm	W -> CMYKLcLmMt(v)	P. 35
Printing with metallic silver + CMYKLcLm and then white	CMYKLcLmMt -> W(v)	P. 35

Using Metallic Silver

When using metallic silver ink, use the metallic color chart to see the color. Print the metallic color chart before performing actual printing when using metallic silver.

☞ P. 20 “Printing a Metallic Color Chart”

Printing Settings

- * If equipped with both white and metallic silver ink, Lk (Light Black) ink is not used. Ignore “Lk” in this manual.

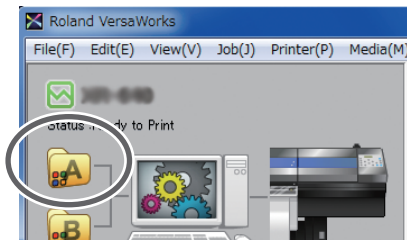
Printing a Metallic Color Chart

The Metallic Color Chart is the printing sample of the special metallic color. Printing the Metallic Color Chart allows you to check the special metallic color that can be printed with your printer and your media. By selecting colors from this color chart and creating illustrations with these colors, you can accurately reproduce the desired colors. (Slight pattern differences may result depending on the printer or media content.)


Procedure

- 1 Double-click .

The “Queue A Properties” window appears.



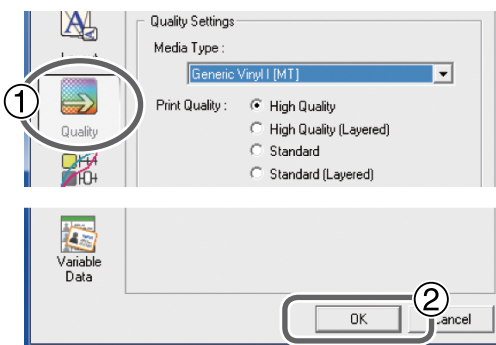
- 2 Configure the settings in [Quality Settings] and [Color Management].

- 1 Click , and configure the settings in [Quality Settings] and [Color Management].

Configure the settings to match the printing method.

- ☞ P. 22 “Printing Only with Metallic Silver Ink”
- ☞ P. 24 “Blend Printing (Metallic Silver + CMYKLcLmLk)”
- ☞ P. 26 “Layered Printing (Metallic Silver > CMYKLcLmLk)”
- ☞ P. 28 “Layered Printing (CMYKLcLmLk > Metallic Silver)”

- 2 Click [OK].



MEMO

When printing a Metallic Color Chart, the [Quality] settings from the [Queue Properties] window are always applied. Because you cannot change the quality settings for the job using the [Job Settings] window after it has been added, be sure to configure the settings in the [Queue Properties] window before performing the following operations.

3 Add the Metallic Color Chart print job to the job list.

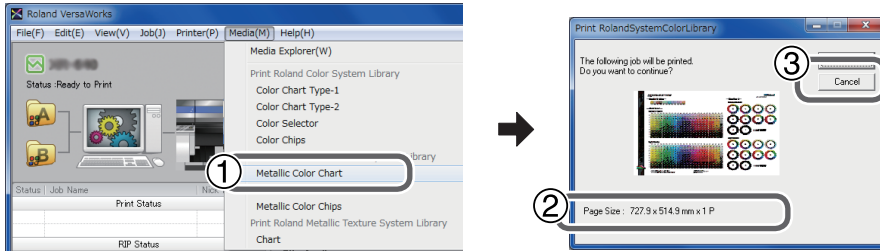
1 Click [Media] and then [Metallic Color Chart].

2 Check the page size.

If the size of the media loaded on the printer is not adequate for the page size, change it to another media of sufficient size.

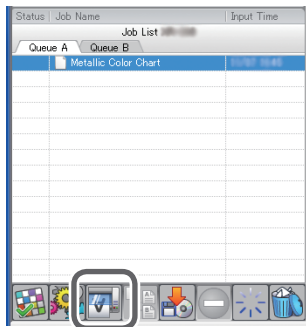
3 Click [OK].

The Metallic Color Chart print job will be added to the job list.



4 Click .

Printing will be started.



Printing Only with Metallic Silver Ink

This section describes how to perform printing only with the metallic silver ink. To use the metallic silver ink in printing, you need to use printing data where the use of metallic silver ink is designated.

Procedure

2

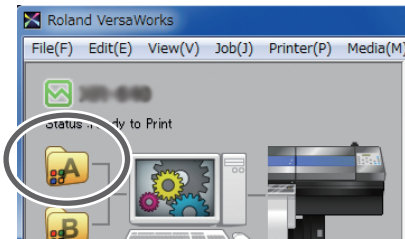
Printing

1 Create data for printing.

⇨ P. 10 "Creating Printing Data"

2 Double-click .

The "Queue A Properties" window appears.

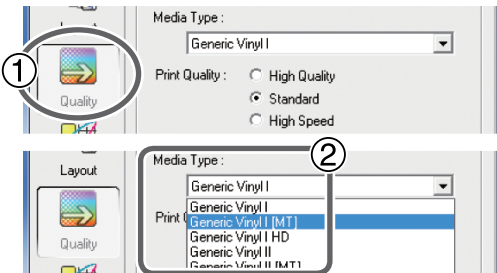


3 Select the media type, print quality, and print mode.

1 Click .

2 For [Media Type], select names with [MT] attached such as "Generic Vinyl 1 [MT]."

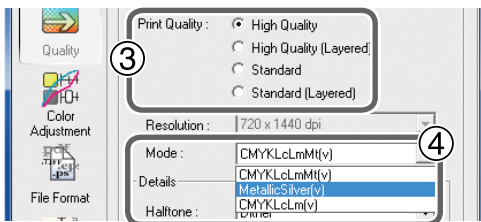
Make the selection that matches the media to be used. Selecting an item with [MT] attached enables you to choose the print mode that can use the metallic silver ink.



3 For [Print Quality], select either [High Quality] or [Standard].

4 For [Mode], select [MetallicSilver(v)].

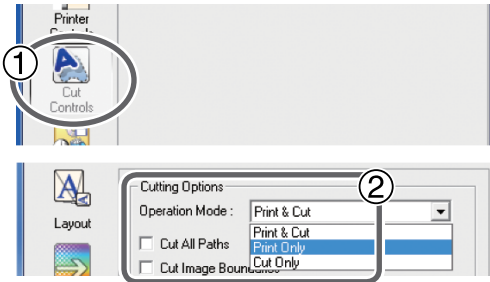
* The items displayed for [Mode] will vary depending on the model used.



4 Set the printer operation.

① Click .

② In [Operation Mode], select “Print Only.”



5 Click [OK] to close the “Queue A Properties” window.

This is the end of the print job setting. To start printing, proceed to P. 39 “Starting the Print Operation”.

- * This section only described the settings that are necessary for the use of the metallic silver ink. For other settings, refer to the online help provided for VersaWorks.
- * If you select [CMYKLcLmLk(v)] for [Mode] in procedure ④, only the area of the image where CMYKLcLmLk is specified in the printing data will be printed.

Blend Printing (Metallic Silver + CMYKLcLmLk)

This section describes how to perform blend printing mixing metallic silver ink and CMYKLcLmLk ink in one layer.

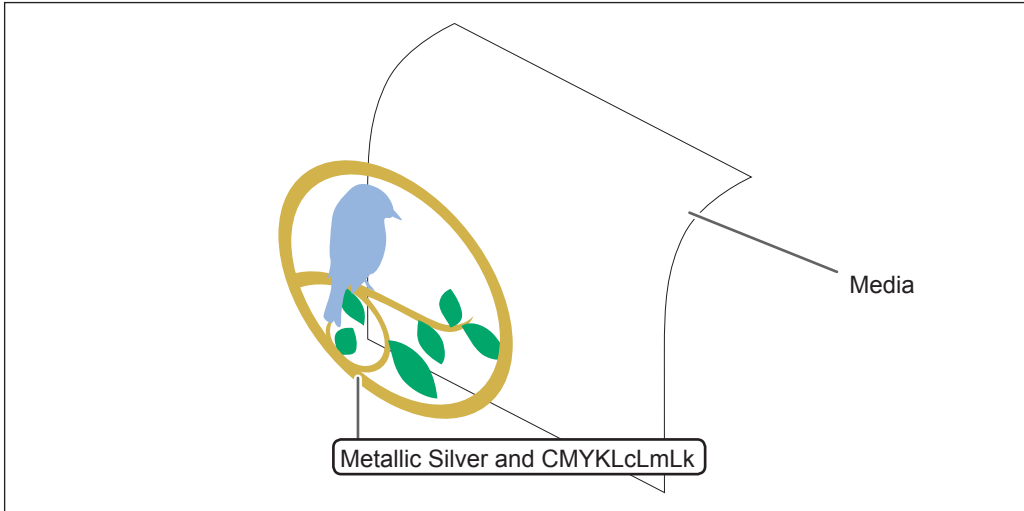
☞ P. 8 “Blend Printing and Layered Printing”

To perform blend printing, you need to use printing data where the use of metallic silver ink and CMYKLcLmLk ink is designated.

(Image of printing method)

2

Printing



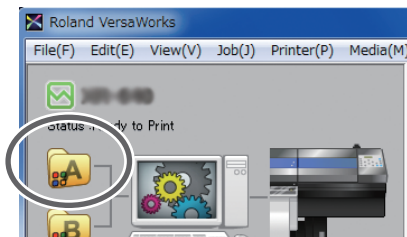
Procedure

- 1 Create data for printing.

☞ P. 10 “Creating Printing Data”

- 2 Double-click .

The “Queue A Properties” window appears.

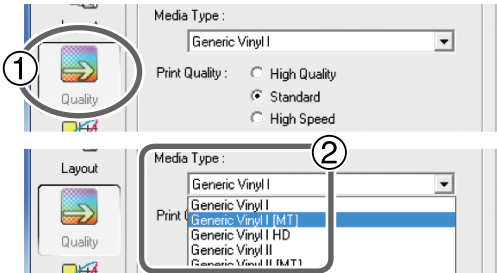


3 Select the media type, print quality, and print mode.

① Click .

② For [Media Type], select names with [MT] attached such as “Generic Vinyl 1 [MT].”

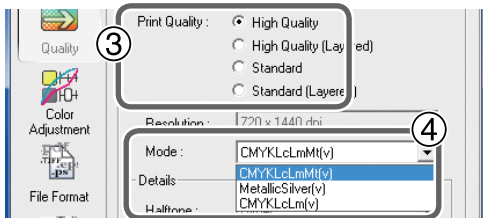
Make the selection that matches the media to be used. Selecting an item with [MT] attached enables you to choose the print mode that can use the metallic silver ink.



③ For [Print Quality], select either [High Quality] or [Standard].

④ For [Mode], select [CMYKLcLmLkMt(v)].

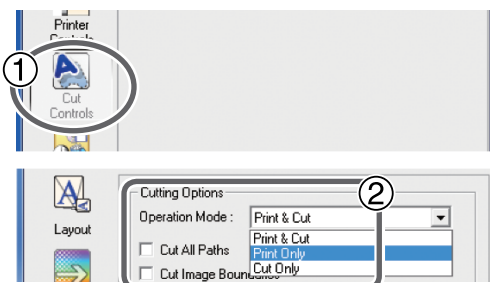
* The items displayed for [Mode] will vary depending on the model used.



4 Set the printer operation.

① Click .

② In [Operation Mode], select “Print Only.”



5 Click [OK] to close the “Queue A Properties” window.

This is the end of the print job setting. To start printing, proceed to P. 39 “Starting the Print Operation”.

* This section only described the settings that are necessary for the use of the metallic silver ink. For other settings, refer to the online help provided for VersaWorks.

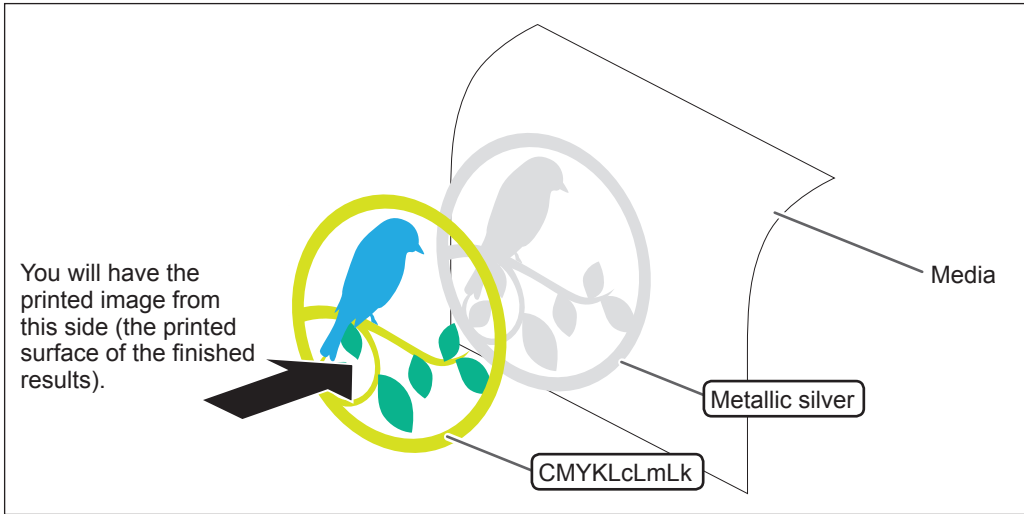
Layered Printing (Metallic Silver > CMYKLcLmLk)

This section describes how to perform layered printing with metallic silver ink and CMYKLcLmLk ink using the metallic silver ink as the background.

☞ P. 8 "Blend Printing and Layered Printing"

To perform layered printing, you need to use printing data where the use of metallic silver ink and CMYKLcLmLk ink is designated.

(Image of printing method)



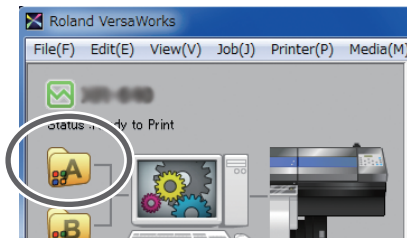
Procedure

- 1 Create data for printing.

☞ P. 10 "Creating Printing Data"

- 2 Double-click .

The "Queue A Properties" window appears.

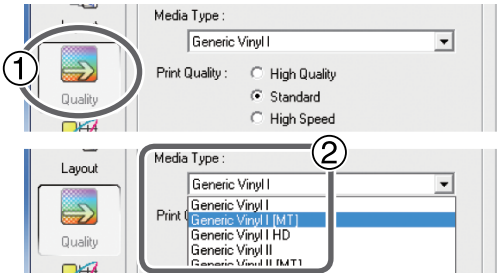


3 Select the media type, print quality, and print mode.

① Click .

② For [Media Type], select names with [MT] attached such as “Generic Vinyl 1 [MT].”

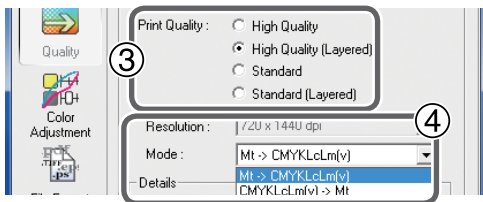
Make the selection that matches the media to be used. Selecting an item with [MT] attached enables you to choose the print mode that can use the metallic silver ink.



③ For [Print Quality], select either [High Quality (Layered)] or [Standard (Layered)].

④ If [Mode] is selectable, select [Mt -> CMYKLcLmLk(v)].

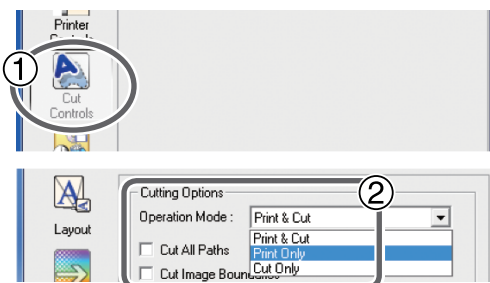
* The items displayed for [Mode] will vary depending on the model used.



4 Set the printer operation.

① Click .

② In [Operation Mode], select “Print Only.”



5 Click [OK] to close the “Queue A Properties” window.

This is the end of the print job setting. To start printing, proceed to P. 39 “Starting the Print Operation”.

* This section only described the settings that are necessary for the use of the metallic silver ink. For other settings, refer to the online help provided for VersaWorks.

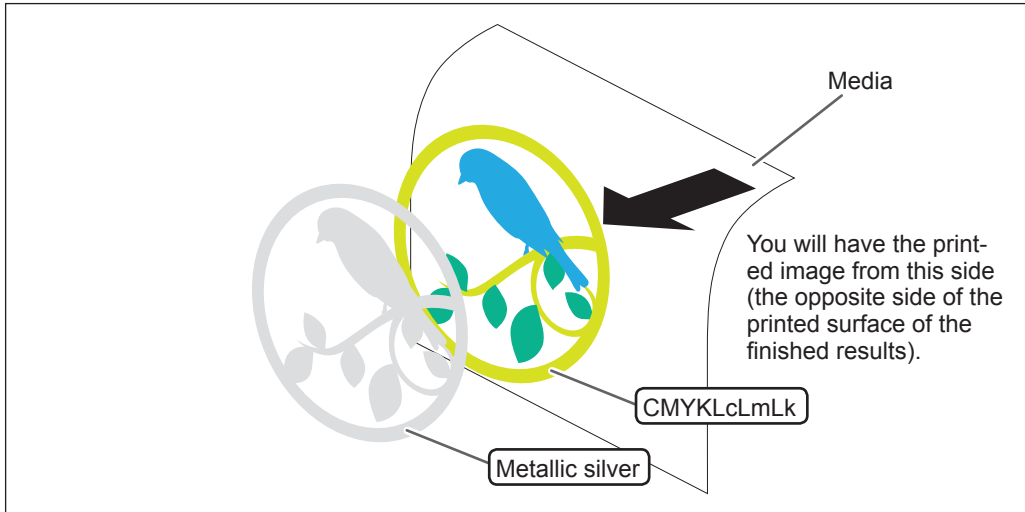
Layered Printing (CMYKLcLmLk > Metallic Silver)

This section describes how to perform layered printing with CMYKLcLmLk ink and metallic silver ink using the CMYKLcLmLk ink as the background.

☞ P. 8 "Blend Printing and Layered Printing"

To perform layered printing, you need to use printing data where the use of metallic silver ink and CMYKLcLmLk ink is designated.

(Image of printing method)



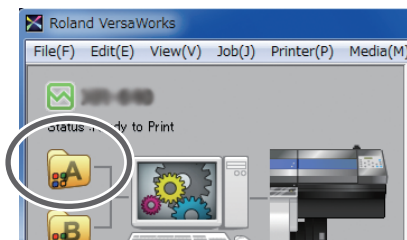
Procedure

1 Create data for printing.

☞ P. 10 "Creating Printing Data"

2 Double-click .

The "Queue A Properties" window appears.



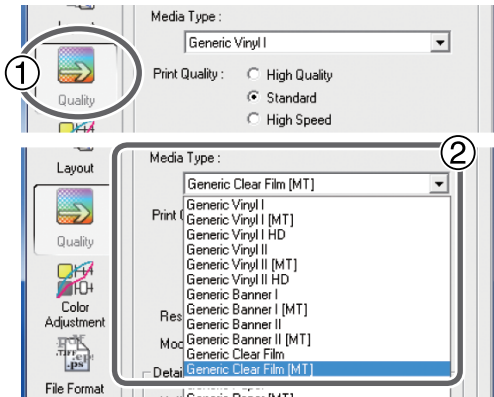
3 Select the media type, print quality, and print mode.

① Click .

② For [Media Type], select a name with “Clear” and [MT] attached, such as “Generic Clear Film [MT]” or “xxx [MT]: PET Clear Film, Adhesive.”

Make the selection that matches the media to be used. Selecting an item with both “Clear” and [MT] attached to the name enables you to choose the print mode for the transparent media that can use the metallic silver ink.

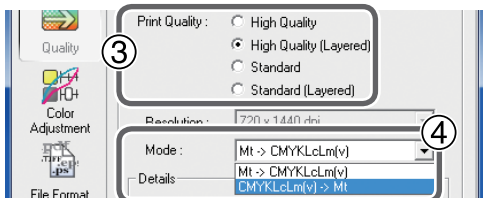
* “xxx” indicates “SP-CLT” and others.



③ For [Print Quality], select either [High Quality (Layered)] or [Standard (Layered)].

④ For [Mode], select [CMYKLCmLk -> Mt(v)].

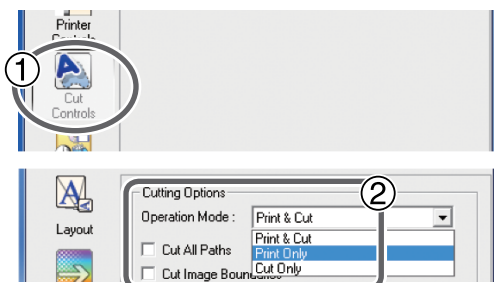
* The items displayed for [Mode] will vary depending on the model used.



4 Set the printer operation.

① Click .

② In [Operation Mode], select “Print Only.”

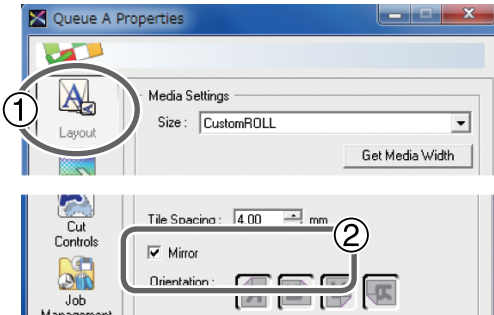


MEMO: When you want to display the side opposite the printed surface by using clear film

① Click .

② Turn on the **[Mirror]** option.

When the printing data with mirror image is prepared beforehand, you do not need to turn on this option.



⑤ Click **[OK]** to close the “Queue A Properties” window.

This is the end of the print job setting. To start printing, proceed to P. 39 “Starting the Print Operation”.

- * This section only described the settings that are necessary for the use of the metallic silver ink. For other settings, refer to the online help provided for VersaWorks.

Printing Only with White Ink

This section describes how to perform printing only with the white ink. To use the white ink in printing, you need to use printing data where the use of white ink is designated.

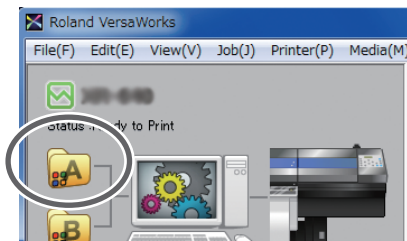
Procedure

1 Create data for printing.

☞ P. 10 "Creating Printing Data"

2 Double-click .

The "Queue A Properties" window appears.



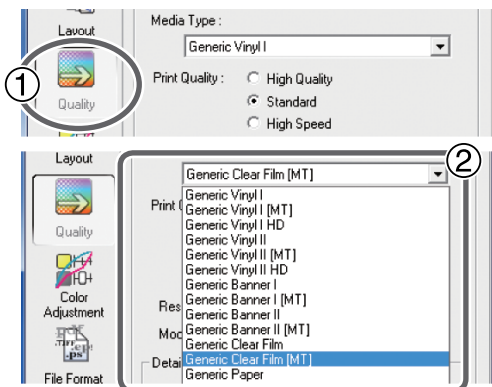
3 Select the media type, print quality, and print mode.

1 Click .

2 For [Media Type], select a name with "Clear" attached, such as "Generic Clear Film [MT]" or "xxx :PET Clear Film, Adhesive."

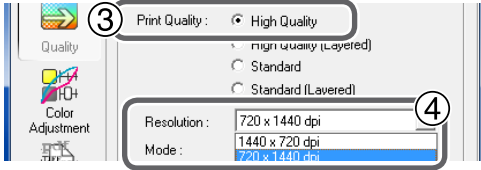
Make the selection that matches the media to be used. Selecting an item with "Clear" attached to the name enables you to choose the print mode for the transparent media that can use the white ink.

* "xxx" indicates "SP-CLT" and others.



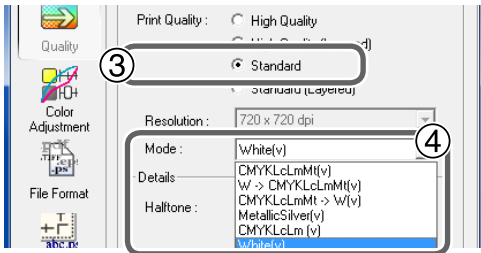
For high print quality:

- ③ For [Print Quality], select [High Quality].
- ④ For [Resolution], select [720x1440dpi].
[Mode] is set to [White(v)].
If the resolution cannot be selected, set [Mode] to [White(v)].



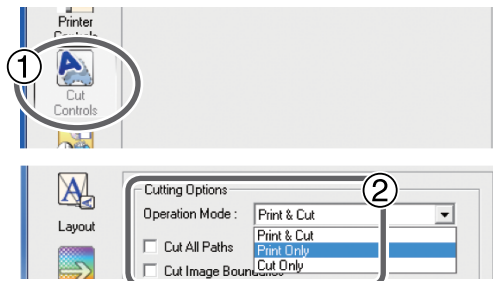
For standard print quality:

- ③ For [Print Quality], select [Standard].
 - ④ For [Mode], select [White(v)].
- * The items displayed for [Mode] will vary depending on the model used.



4 Set the printer operation.

- ① Click .
- ② In [Operation Mode], select “Print Only.”



MEMO

When you want to display the side opposite the printed surface by using clear film, refer to P. 30 “MEMO: When you want to display the side opposite the printed surface by using clear film”.

5 Click [OK] to close the “Queue A Properties” window.

This is the end of the print job setting. To start printing, proceed to P. 39 “Starting the Print Operation”.

- * Only the settings necessary for the use of the white ink are described in this section. For other settings, refer to the online help provided for VersaWorks.

Printing with White and CMYKLcLmLk Ink

This section describes how to perform printing with the white ink and the CMYKLcLmLk ink. Deciding which ink between white and CMYKLcLmLk you want to use for the base is an important point in determining the print job settings here.

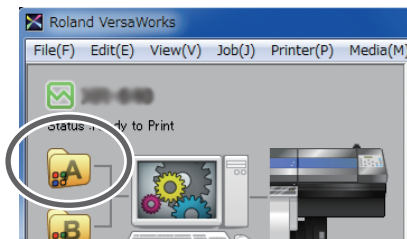
Procedure

1 Create data for printing.

☞ P. 10 "Creating Printing Data"

2 Double-click .

The "Queue A Properties" window appears.



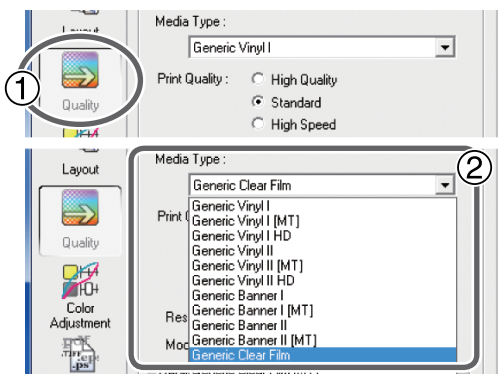
3 Select the media type, print quality, and print mode.

1 Click .

2 For [Media Type], select a name with "Clear" attached, such as "Generic Clear Film" or "xxx :PET Clear Film, Adhesive."

Make the selection that matches the media to be used. Selecting an item with "Clear" attached to the name enables you to choose the print mode for the transparent media that can use the white ink.

- * "xxx" indicates "SP-CLT" and others.
- * Do not select names with [MT] attached. Names with [MT] attached are selected when using metallic silver ink.



- ③ For [Print Quality], select either [High Quality] or [Standard].
- ④ For [Mode], select the print mode.
 - W -> CMYKLCmLk(v): Inks are overprinted in the sequence of white and then CMYKLCmLk.
 - CMYKLCmLk -> W(v): Inks are overprinted in the sequence of CMYKLCmLk and then white.
- * The items displayed for [Mode] will vary depending on the model used.

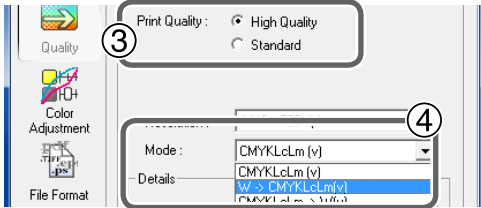
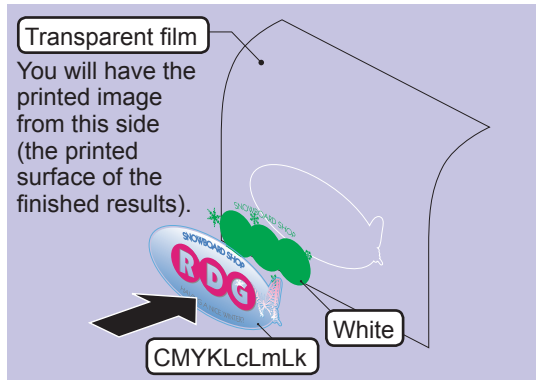
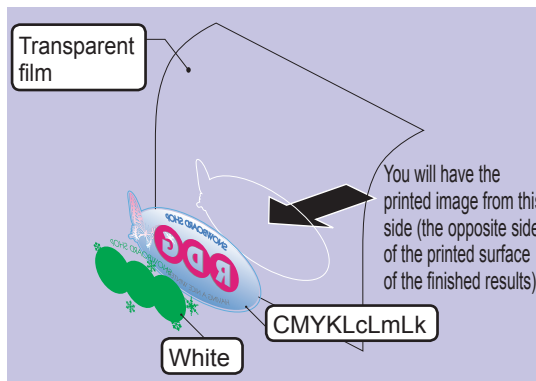


Image of overprinting in the sequence of white and then CMYKLCmLk



- * The white data and the CMYKLCmLk color data are actually printed simultaneously, but they are shown here as separate layers in order to indicate the printing sequence.

Image of overprinting in the sequence of CMYKLCmLk and then white

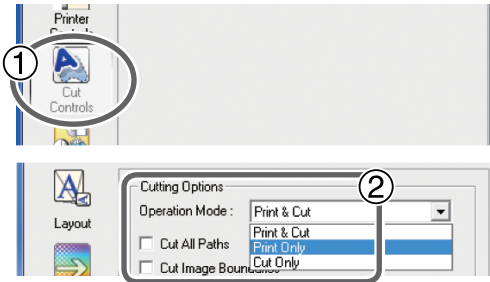


- * The white data and the CMYKLCmLk color data are actually printed simultaneously, but they are shown here as separate layers in order to indicate the printing sequence.

4 Set the printer operation.

① Click .

② In [Operation Mode], select “Print Only.”



MEMO

When you want to display the side opposite the printed surface by using clear film, refer to P. 30 “MEMO: When you want to display the side opposite the printed surface by using clear film”.

5 Click [OK] to close the “Queue A Properties” window.

This is the end of the print job setting. To start printing, proceed to P. 39 “Starting the Print Operation”.

* Only the settings necessary for the use of the white ink are described in this section. For other settings, refer to the online help provided for VersaWorks.

Printing with White, Metallic Silver, and CMYKLcLm Ink

This section describes how to perform printing with the white, metallic silver, and CMYKLcLm ink. Deciding which ink between the white and the others (the metallic silver and CMYKLcLm) you want to use for the base is an important point in determining the print job setting here.

For the area of the image to be printed with metallic silver ink and CMYKLcLm ink combined, the setting is fixed to blend printing.

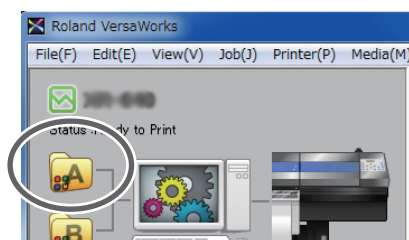
Procedure

1 Create data for printing.

⇨ P. 10 “Creating Printing Data”

2 Double-click .

The “Queue A Properties” window appears.



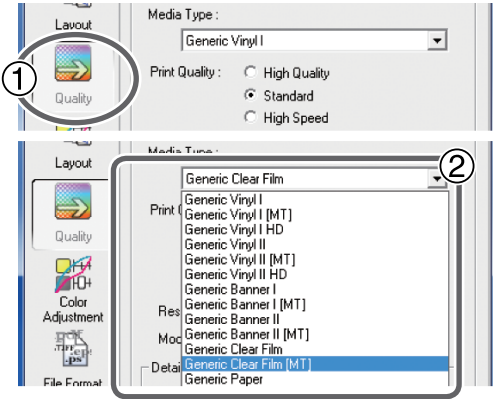
3 Select the media type, print quality, and print mode.

1 Click .

2 For [Media Type], select a name with “Clear” and [MT] attached, such as “Generic Clear Film [MT]” or “xxx [MT]: PET Clear Film, Adhesive.”

Make the selection that matches the media to be used. Selecting an item with both “Clear” and [MT] attached to the name enables you to choose the print mode for the transparent media that can use the metallic silver ink.

* “xxx” indicates “SP-CLT” and others.



3 For [Print Quality], select either [High Quality] or [Standard].

4 For [Mode], select the print mode.

- W -> CMYKLcLmMt(v): Inks are overprinted in the sequence of white and then metallic silver/CMYKLcLm.
- CMYKLcLmMt -> W(v): Inks are overprinted in the sequence of metallic silver/CMYKLcLm and then white.

* The items displayed for [Mode] will vary depending on the model used.

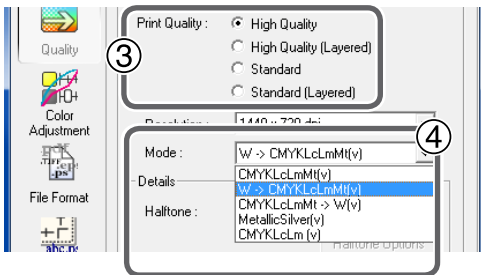
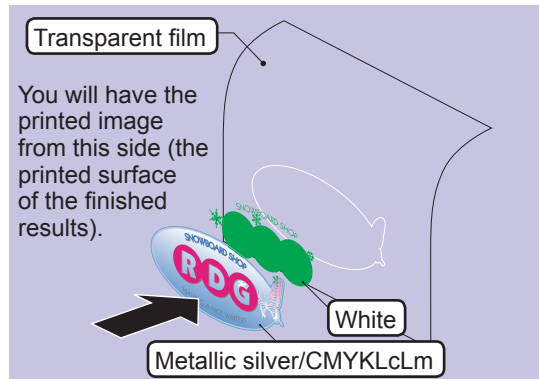
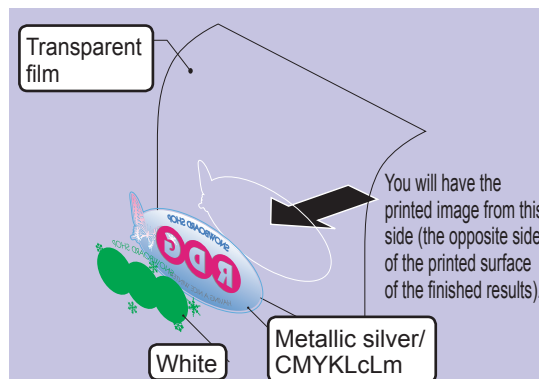


Image of overprinting in the sequence of white and then metallic silver/CMYKLcLm



* The white data and the metallic silver/CMYKLcLm color data are actually printed simultaneously, but they are shown here as separate layers in order to indicate the printing sequence.

Image of overprinting in the sequence of metallic silver/CMYKLcLm and then white

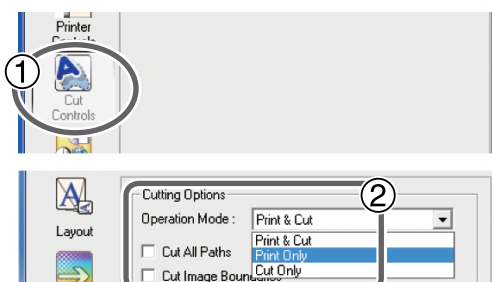


* The white data and the metallic silver/CMYKLcLm color data are actually printed simultaneously, but they are shown here as separate layers in order to indicate the printing sequence.

4 Set the printer operation.

① Click .

② In [Operation Mode], select "Print Only."



MEMO

When you want to display the side opposite the printed surface by using clear film, refer to P. 30 “MEMO: When you want to display the side opposite the printed surface by using clear film”.

5 Click [OK] to close the “Queue A Properties” window.

This is the end of the print job setting. To start printing, proceed to P. 39 “Starting the Print Operation”.

- * Only the settings necessary for the use of the metallic silver ink and white ink are described in this section. For other settings, refer to the online help provided for VersaWorks.

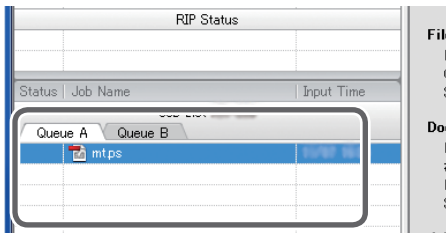
Starting the Print Operation

Starting the Print Operation

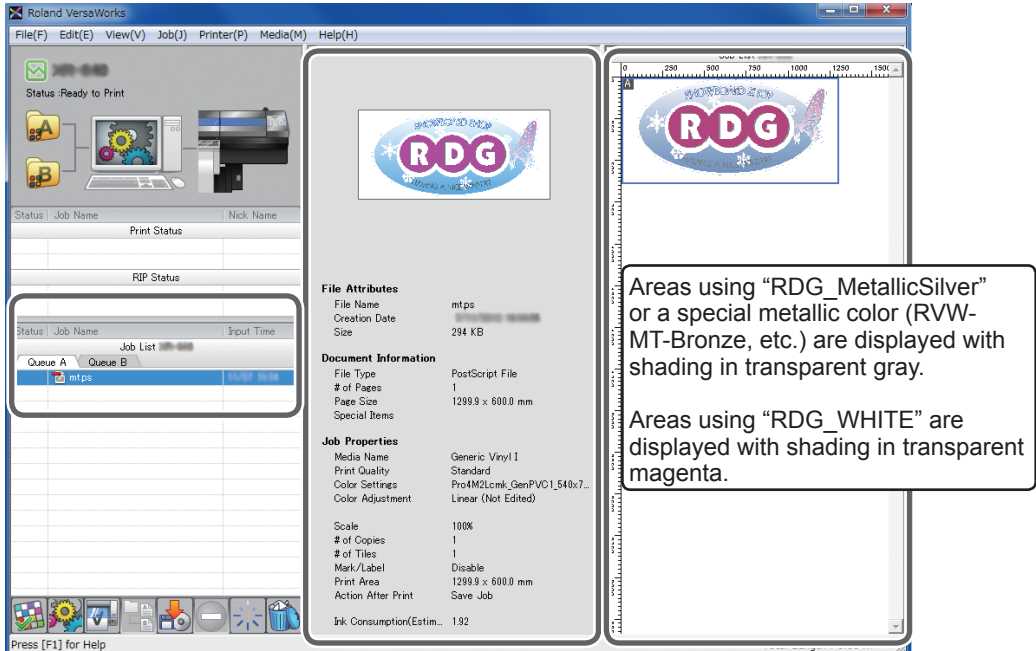
After configuring the print job settings, you can start the print operation.

Procedure

- 1 **Configure the settings for the print job.**
☞ P. 20 "Printing Settings"
- 2 **Go to "Job List," click the "Queue A" tab, and drag the printing data to the queue A job list. (If the print job setting has been made in [Queue B], drag and drop the printing data on the job list of [Queue B].)**



The contents of the data are displayed in the preview window, and the layout on the media is displayed in the layout window.

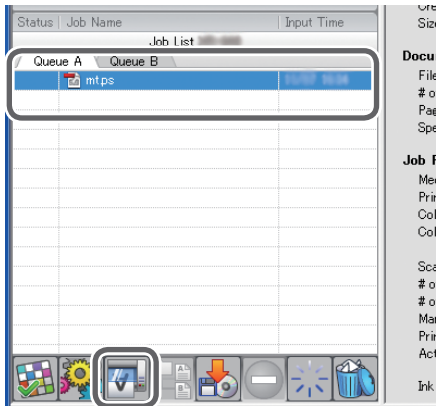


MEMO

If the areas to be printed with white are not displayed with shading, special color ink will not be used for printing. Before printing, make sure that the areas with specified special spot colors are shaded.

- 3 Select the print job in the job list, and then click .

Printing will be started.



MEMO

After printing, allow the ink to dry sufficiently. We strongly recommend performing lamination.

MEMO

To continue printing similar data, repeat steps 2 and 3. Also, if you want to modify detailed settings for each job, it will be convenient to perform modifications in the "Job Settings" window (displayed by double-clicking the print job in the job list).

Chapter 3 Advanced

Pullback Printing	42
Pullback Printing (White > Metallic silver/CMYKLcLm)	42
Pullback Printing (Metallic silver/CMYKLcLm > White)	49
Metallic Texture Printing	56
What is Metallic Texture Printing?	56
Checking the Metallic Texture Pattern	56
Creating Metallic Texture Printing Data	58
Advanced Operations	60
Making Printing Settings for Each Job.....	60
Generating Special Color Plates	61
Correcting the Position of Special Color Plates.....	62
Correcting the Size of Special Color Plates.....	64
Maintenance	66
Message for Ink Circulation	66
When Uneven Colors and Dot Drop-Out Cannot be Corrected.....	66

Pullback Printing

Pullback Printing (White > Metallic silver/CMYKLcLm)

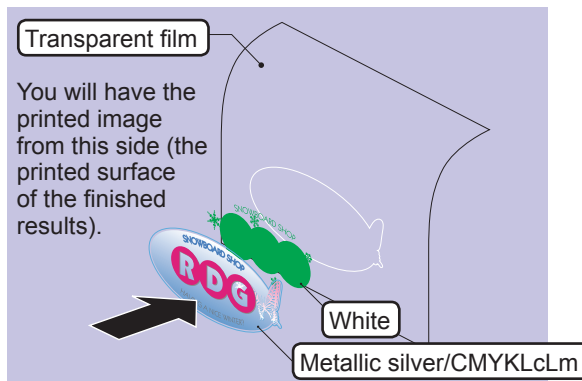
This section describes how to perform printing in the sequence of white and then metallic silver/CMYKLcLm. After performing printing using white ink and allowing the ink to dry for a predetermined period, the media is pulled back once, and then fill overprinting is performed using metallic silver and CMYKLcLm ink. The printing data containing "RDG_WHITE" must be used in order to use the white ink, and the printing data containing metallic colors such as "RDG_MetallicSilver" and "RVW-MT-Bronze" must be used in order to use the metallic silver ink.

☞ P. 10 "Creating Printing Data"

Important

This printing method involves some important notes for avoiding contamination on the printed surface. Refer to P. 6 "When Performing Pullback Printing" for details.

Image of overprinting in the sequence of white and then metallic silver/CMYKLcLm



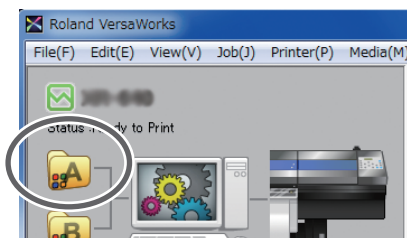
1. Perform printing with white ink only.

1 Create data for printing.

☞ P. 10 "Creating Printing Data"

2 Double-click .

The "Queue A Properties" window appears.



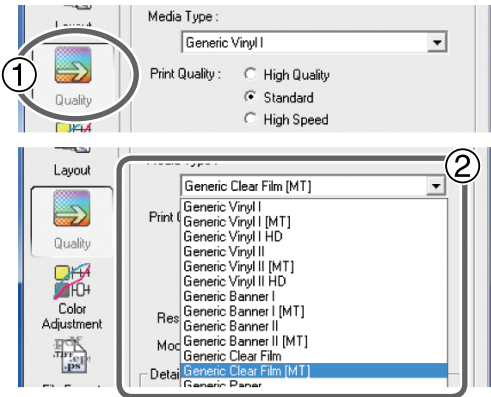
3 Select the media type, print quality, and print mode.

① Click .

② For [Media Type], select a name with “Clear” and [MT] attached, such as “Generic Clear Film [MT]” or “xxx [MT]: PET Clear Film, Adhesive.”

Make the selection that matches the media to be used. Selecting an item with both “Clear” and [MT] attached to the name enables you to choose the print mode for the transparent media that can use the metallic silver ink.

* “xxx” indicates “SP-CLT” and others.

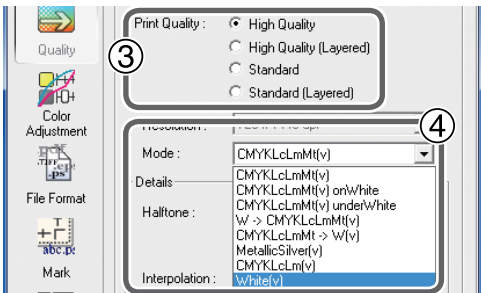


③ For [Print Quality], select either [High Quality] or [Standard].


④ For [Mode], select the print mode “White(v).”

This prints with RDG_WHITE only.

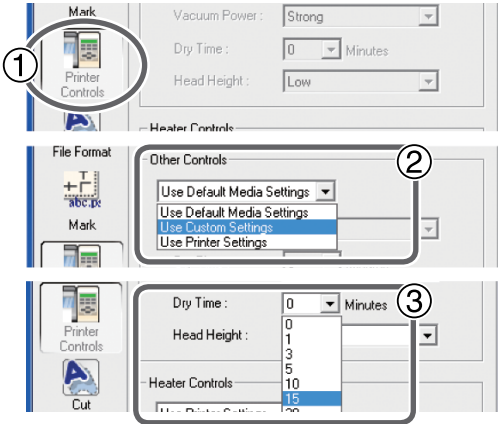
* The items displayed for [Mode] will vary depending on the model used.




4 Set the drying time after printing with white ink.

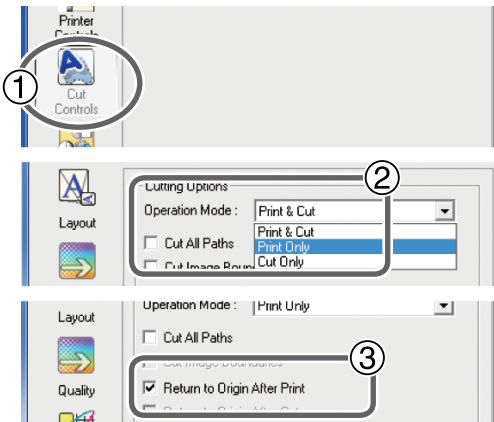
- ① Click .
- ② With [Other Controls], select “User Custom Settings.”
- ③ For [Dry Time], select “15 minutes.”

This is a suggested setting for when using an auxiliary drying unit (DU Series).



5 Set the printer operation.

- ① Click .
- ② For [Operation Mode], select “Print Only.”
- ③ Turn on the [Return to Origin After Print] option.

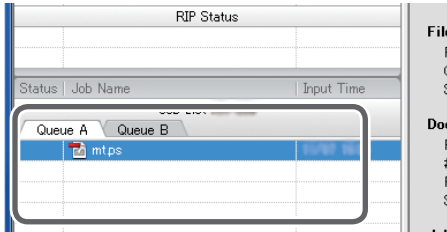


MEMO

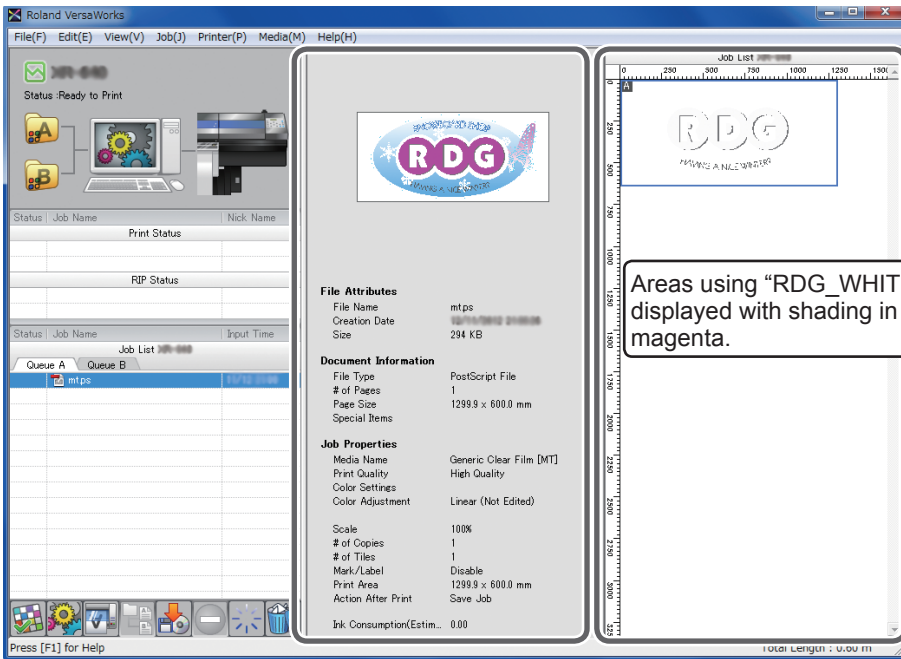
When you want to display the side opposite the printed surface by using clear film, refer to P. 30 “MEMO: When you want to display the side opposite the printed surface by using clear film”.

* Only the settings necessary for the use of the white ink are described in this section. For other settings, refer to the online help provided for VersaWorks.

- 6 Click [OK] to close the “Queue A Properties” window.
- 7 Go to “Job List” click the “Queue A” tab, and drag the printing data to the queue A job list.



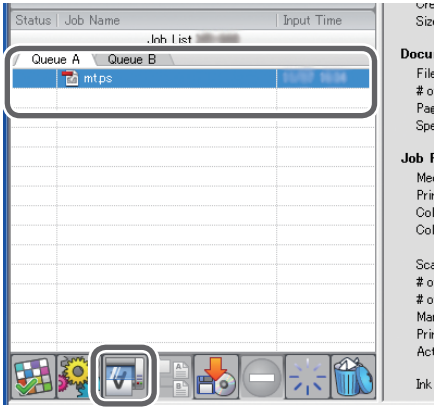
The contents of the data are displayed in the preview window, and the layout on the media is displayed in the layout window.



3 Advanced

- 8 Select the print job in the job list, and then click .

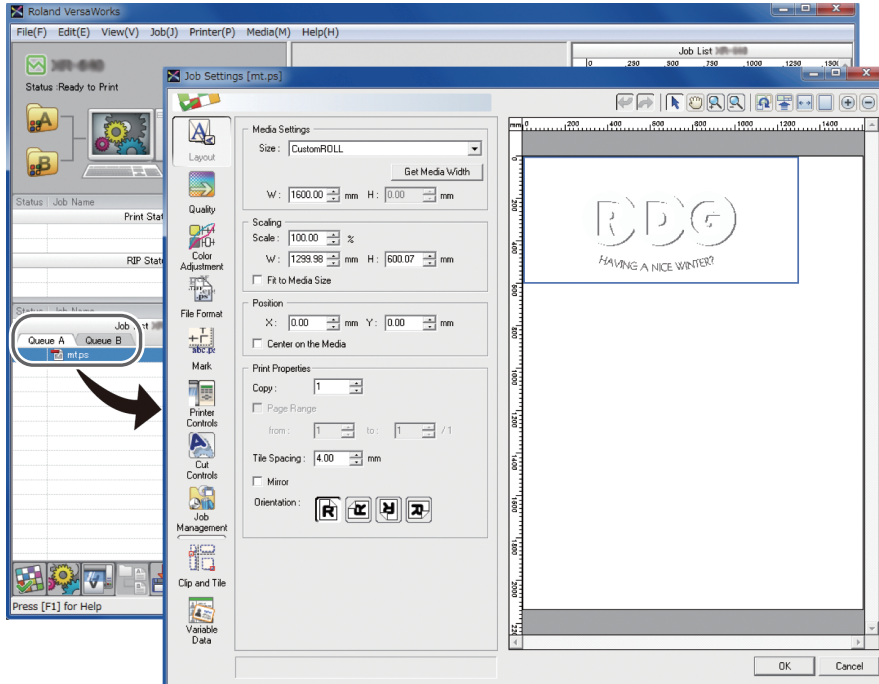
Printing will be started. After printing and dry time, the media is pulled back. Continue printing of areas using metallic silver and CMYKLcLm colors.



2. Perform printing with MetallicSilver/CMYKLcLm color.


- 1 Double-click the print job that was used in step 1.

The "Job Settings" window appears.

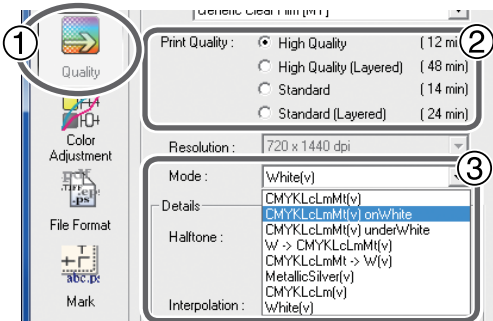


2 Select the print quality and print mode.


When performing blend printing

- ① Click .
- ② For [Print Quality], select either [High Quality] or [Standard].
- ③ For [Mode], select “CMYKLcLmMt(v) onWhite.”

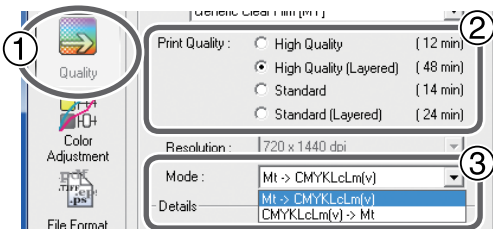
This prints the areas where metallic color, such as RDG_MetallicSilver and RVW-MT-Bronze, and CMYKLcLm colors are specified.



When performing layered printing

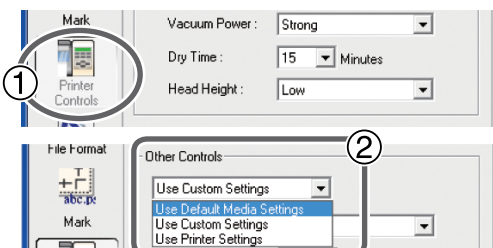
- ① Click .
- ② For [Print Quality], select either [High Quality (Layered)] or [Standard (Layered)].
- ③ For [Mode], select “Mt -> CMYKLcLm(v).”

This prints the areas where metallic color, such as RDG_MetallicSilver and RVW-MT-Bronze, and CMYKLcLm colors are specified.



3 Under [Other Controls], select “Use Default Media Settings.”

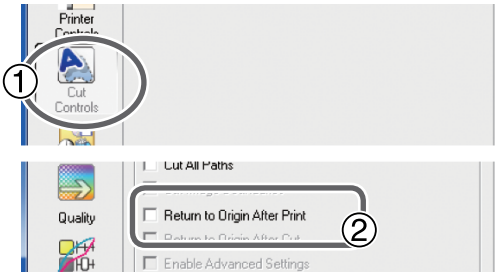
- ① Click .
- ② With [Other Controls], select “Use Default Media Settings.”




4 Set the media so that it does not return to the origin after printing.

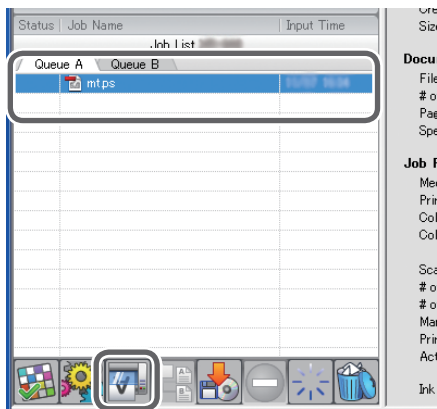
① Click .

② Turn off the [Return to Origin After Print] option.



5 Click [OK] to close the “Job Settings” window.

6 Select the print job in the job list, and then click . Printing will be started.



MEMO

After printing, allow the ink to dry sufficiently. We strongly recommend performing lamination.

MEMO

To continue printing using other data that uses metallic silver, white, and CMYKLcLm colors, repeat from step 1.- 9. Also, if you want to modify detailed settings for each job, it will be convenient to perform modifications in the “Job Settings” window (displayed by double-clicking the print job in the job list).

Pullback Printing (Metallic silver/CMYKLcLm > White)

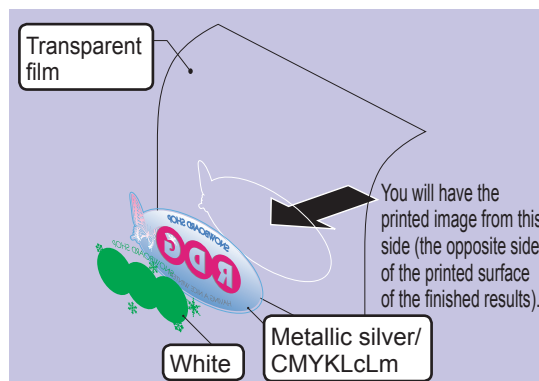
This section describes how to perform printing in the sequence of metallic silver/CMYKLcLm and then white. After performing printing using metallic silver and CMYKLcLm ink and allowing the ink to dry for the pre-determined period, the media is pulled back once, and then fill overprinting is performed using white ink. The printing data containing metallic colors such as "RDG_MetallicSilver" and "RVW-MT-Bronze" must be used in order to use the metallic silver ink, and the printing data containing "RDG_WHITE" must be used in order to use the white ink.

☞ P. 10 "Creating Printing Data"

Important

This printing method involves some important notes for avoiding contamination on the printed surface. Refer to P. 6 "When Performing Pullback Printing" for details.

Image of overprinting in the sequence of metallic silver/CMYKLcLm and then white



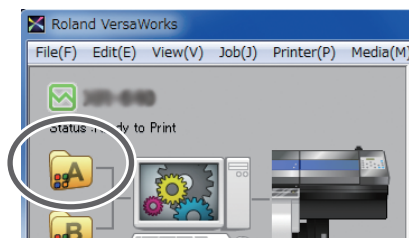
1. Perform printing with MetallicSilver/CMYKLcLm color.

1 Create data for printing.

☞ P. 10 "Creating Printing Data"

2 Double-click .

The "Queue A Properties" window appears.



3 Select the media type, print quality, and print mode.

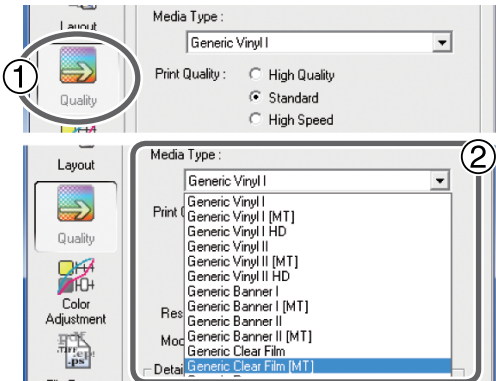
When performing blend printing with metallic silver/CMYKLcLm

① Click .

② For [Media Type], select a name with “Clear” and [MT] attached, such as “Generic Clear Film [MT]” or “xxx [MT]: PET Clear Film, Adhesive.”

Make the selection that matches the media to be used. Selecting an item with both “Clear” and [MT] attached to the name enables you to choose the print mode for the transparent media that can use the metallic silver ink.

* “xxx” indicates “SP-CLT” and others.

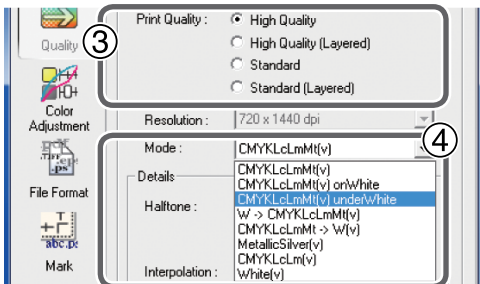


③ For [Print Quality], select either [High Quality] or [Standard].

④ For [Mode], select “CMYKLcLmMt(v) underWhite.”

This prints the areas where metallic color, such as RDG_MetallicSilver and RVW-MT-Bronze, and CMYKLcLm colors are specified.

* The items displayed for [Mode] will vary depending on the model used.



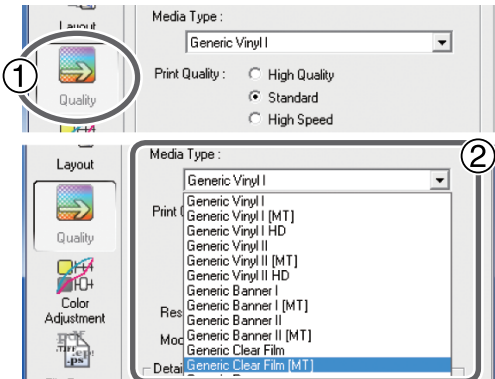
When performing layered printing with metallic silver/CMYKLcLm

① Click .

② For [Media Type], select a name with “Clear” and [MT] attached, such as “Generic Clear Film [MT]” or “xxx [MT]: PET Clear Film, Adhesive.”

Make the selection that matches the media to be used. Selecting an item with both “Clear” and [MT] attached to the name enables you to choose the print mode for the transparent media that can use the metallic silver ink.

* “xxx” indicates “SP-CLT” and others.

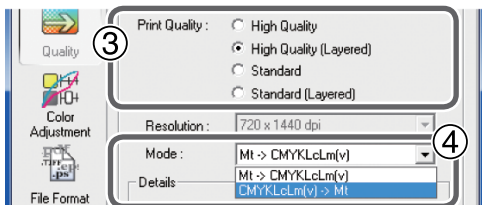


③ For [Print Quality], select either [High Quality] or [Standard].


④ For [Mode], select “CMYKLcLm -> Mt(v).”

This prints the areas where metallic color, such as RDG_MetallicSilver and RVW-MT-Bronze, and CMYKLcLm colors are specified.

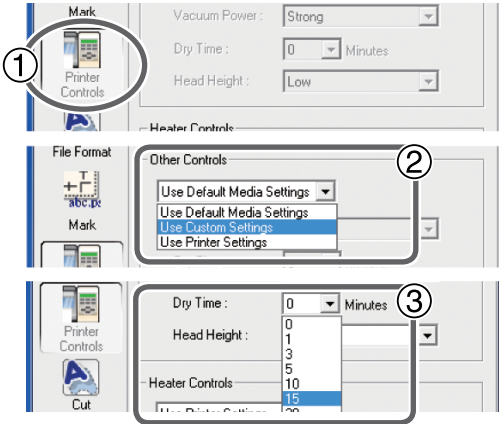
* The items displayed for [Mode] will vary depending on the model used.




4 Set the drying time after printing with metallic silver/CMYKLcLm.

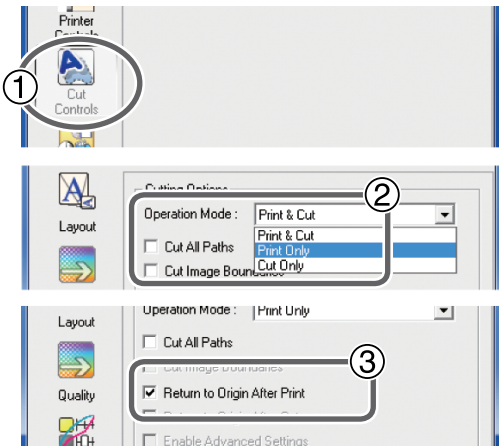
- ① Click .
- ② With [Other Controls], select “User Custom Settings.”
- ③ For [Dry Time], select “15 minutes.”

This is a suggested setting for when using an auxiliary drying unit (DU Series).



5 Set the printer operation.

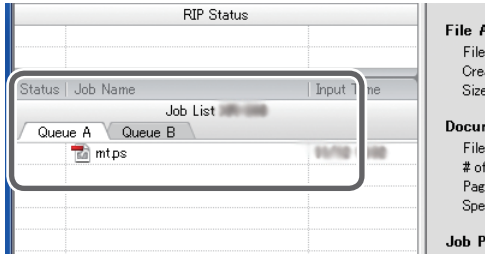
- ① Click .
- ② For [Operation Mode], select “Print Only.”
- ③ Turn on the [Return to Origin After Print] option.



MEMO

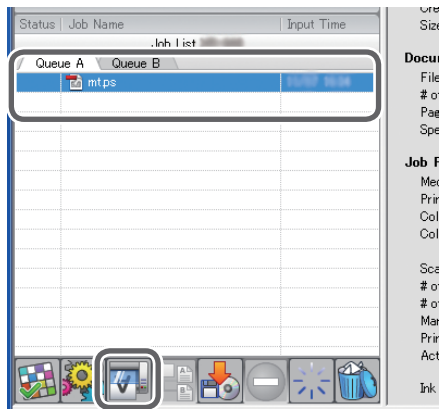
When you want to display the side opposite the printed surface by using clear film, refer to P. 30 “MEMO: When you want to display the side opposite the printed surface by using clear film”.

- Go to “Job List” click the “Queue A” tab, and drag the printing data to the queue A job list.



- Select the print job in the job list, and then click .

Printing will be started. After printing and dry time, the media is pulled back. Then, print the white areas.

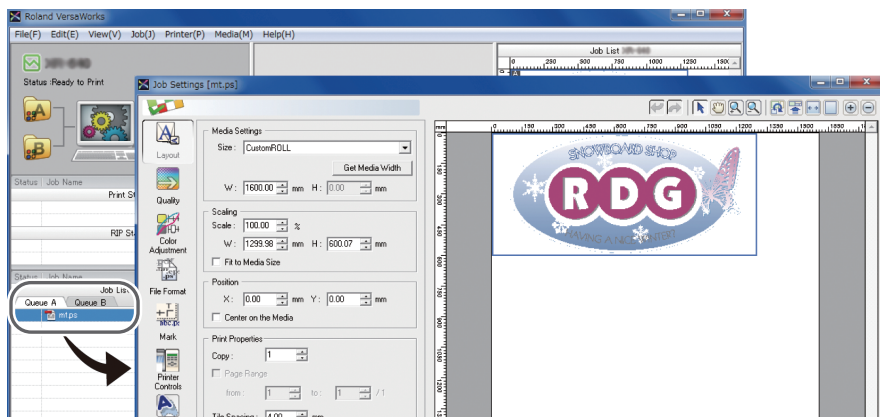


3 Advanced

2. Perform printing with white ink only.

- Double-click the print job that was used in step 1.

The “Job Settings” window appears.



2 Select the print quality and print mode.

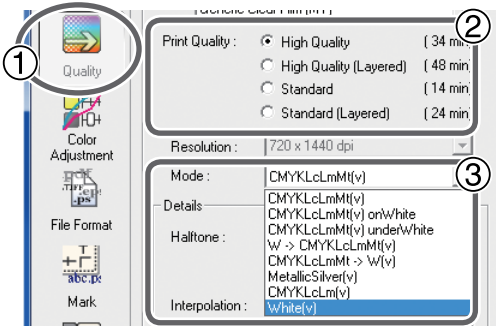
① Click .

② For [Print Quality], select either [High Quality] or [Standard].

③ For [Mode], select the print mode “White(v).”

This prints with RDG_WHITE only.

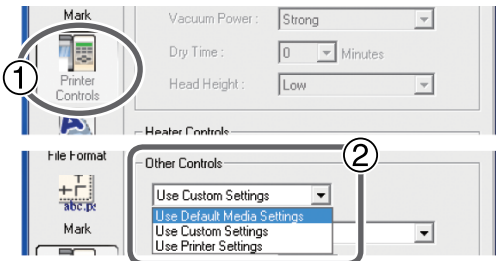
* The items displayed for [Mode] will vary depending on the model used.



3 Under [Other Controls], select “Use Default Media Settings.”

① Click .

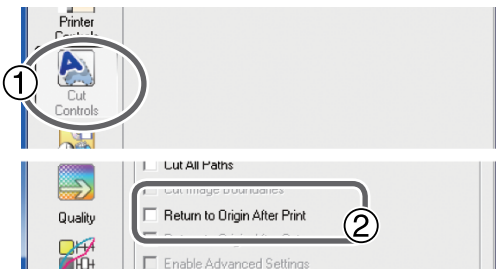
② With [Other Controls], select “Use Default Media Settings.”




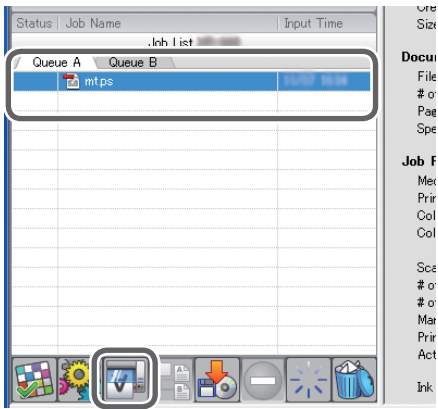
4 Set the media so that it does not return to the origin after printing.

① Click .

② Turn off the [Return to Origin After Print] option.



- 5 Click [OK] to close the “Job Settings” window.
- 6 Select the print job in the job list, and then click . Printing will be started.



MEMO

After printing, allow the ink to dry sufficiently. We strongly recommend performing lamination.

MEMO

To continue printing using other data that uses metallic silver, white, and CMYKLcLm colors, repeat from step 1.-8. Also, if you want to modify detailed settings for each job, it will be convenient to perform modifications in the “Job Settings” window (displayed by double-clicking the print job in the job list).

- * This section only described the settings that are necessary to perform pullback printing in the sequence of metallic silver/CMYKLcLm and then white. For other settings, refer to the online help provided for VersaWorks.

Metallic Texture Printing

What is Metallic Texture Printing?

Metallic texture printing is defined as the method of producing texture patterns with metallic silver ink. This uses the texture patterns provided by “Metallic Texture System Library” to create and output print data.

- * Create the printing data using Adobe Illustrator CS or later if using Adobe Illustrator. Using a version of Adobe Illustrator before Adobe Illustrator 10 to create the printing data may result in texture patterns that do not print well.

Checking the Metallic Texture Pattern

A chart that works as a metallic texture print sample is provided and can be printed to check texture patterns. Printing the chart allows you to check the metallic texture patterns that can be printed with your printer and your media. By creating print data with the texture pattern you select in this chart, you can print your intended pattern almost perfectly. (Slight pattern differences may result depending on the printer or media content.)

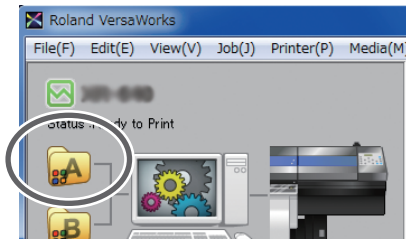
- * To print a chart, use the same media as the one that will actually be used.

Procedure

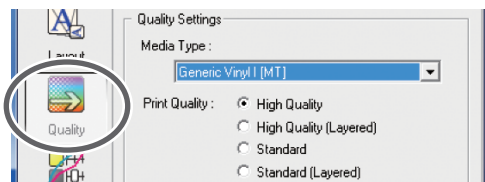
1 Double-click

The “Queue A Properties” window appears.

- * Metallic texture chart output is available with Queue A only.



2 Click , and then select the media type, print quality, and print mode.



Select the media type, print quality, and print mode that will actually be used. For details on how to configure the settings, refer to the following.

- ☞ P. 22 “Printing Only with Metallic Silver Ink”
- ☞ P. 24 “Blend Printing (Metallic Silver + CMYKLcLmLk)”
- ☞ P. 26 “Layered Printing (Metallic Silver > CMYKLcLmLk)”
- ☞ P. 28 “Layered Printing (CMYKLcLmLk > Metallic Silver)”
- ☞ P. 35 “Printing with White, Metallic Silver, and CMYKLcLm Ink”

MEMO

When printing a Metallic Texture Chart, the [Quality] settings from the [Queue Properties] window are always applied. Because you cannot change the quality settings for the job using the [Job Settings] window after it has been added, be sure to configure the settings in the [Queue Properties] window before performing the following operations.

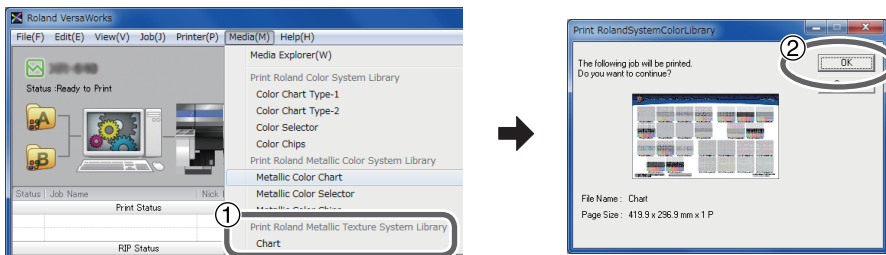
3 Add the metallic texture chart print job to the job list.

① **From the [Media] menu, click [Chart] below [Print Roland Texture System Library].**

The following message appears: "The following job will be printed. Do you want to continue?" Check whether the media in the printer is large enough for the displayed page size.

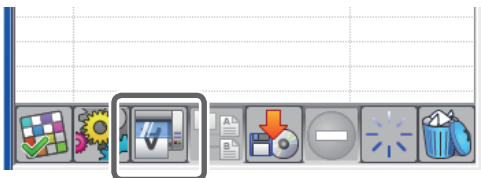
② **Click [OK].**

The metallic texture chart is added to the job list.



4 Click [Print].

The metallic texture chart is printed.



The color and feel of the texture will vary depending on the media type, print quality, and print mode. Test several times using the metallic texture chart until the desired texture is achieved.

* In the metallic texture chart, color is added to part of the background of the texture. This makes the design of the texture clear.

Creating Metallic Texture Printing Data

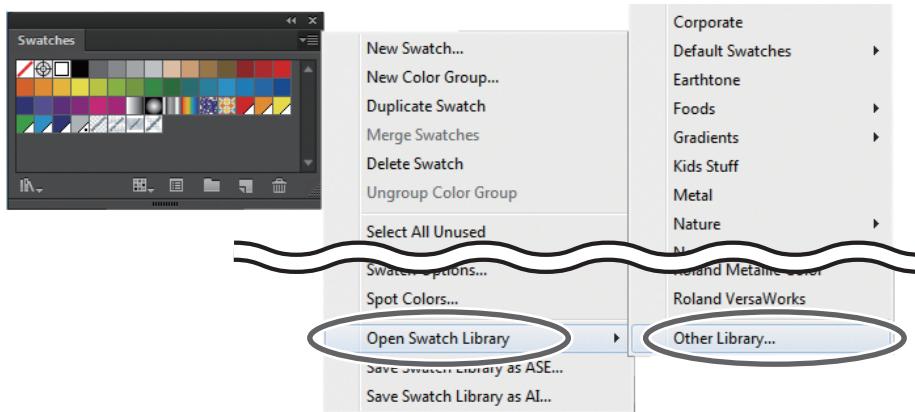
To create the data for the metallic texture printing, follow the instructions below.

The program used to create the printing data is Adobe Illustrator CS6 in this section. For detailed information on drawing methods and how to work with palettes, refer to the documentation or online help for Adobe Illustrator CS6. If you are using another version of Adobe Illustrator, operations may be somewhat different from those explained here.

1. Open the exclusive library.

1 At the swatch palette menu, select [Open Swatch Library], then [Other Library].

* The swatch palette is displayed by going to the menu and selecting [Window], then [Swatch].



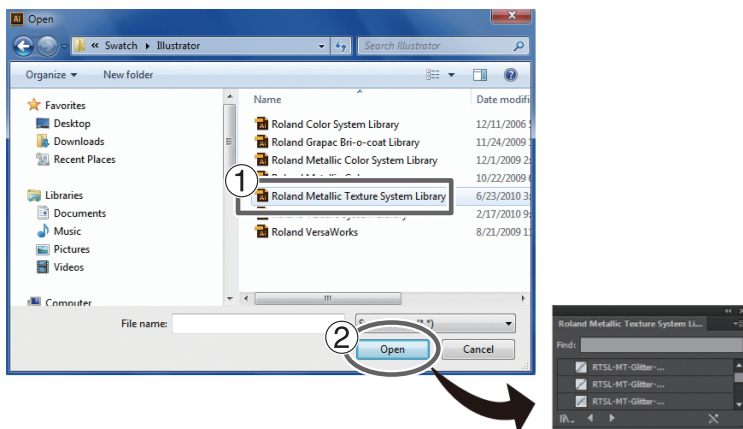
2 Open the exclusive library.

1 Open the folders in the order of [Computer] → [Local Disk (C:)] → [Program Files] or [Program Files (x86)] → [Roland VersaWorks] or [Roland VersaWorks Dual] → [Swatch] → [Illustrator], and then select “Roland Metallic Texture System Library.ai.”

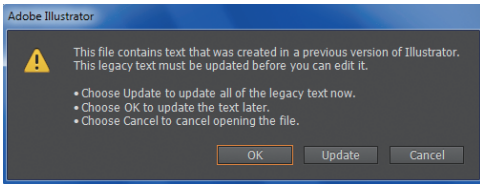
* Depending on the settings of your computer, the extension “.ai” might not be shown.

2 Click [Open].

The exclusive texture library “Roland Metallic Texture System Library” is displayed.



When this screen is displayed, click “OK.”



MEMO

By saving the “.ai” file selected in step 2 into the folder below, you can register the swatch library to the Adobe Illustrator library. Once the registration is performed, you can open the library directly from the swatch palette menu, eliminating the need to search the file every time you start Adobe Illustrator.

C:\Program Files\Adobe\Adobe Illustrator CS6\Presets\(\language abbreviation)\Swatches

- * “C” is the name of your computer's local disk.
- * The language abbreviation differs depending on the language used.
- * Depending on the version of Illustrator used, “\Preset\Swatch” may be used instead of “\Presets\(\language abbreviation)\Swatch.”

2. Specify texture patterns you wish to use on the illustration and output the illustration.

1 Create the illustration.

Be sure to draw the illustration in the CMYK mode.

2 From “Roland Metallic Texture System Library,” specify the texture pattern such as “RTSL-MT-Standard-020.”

The name of the texture pattern is displayed above the data in Illustrator. The texture of the displayed image appears rougher than that of the actual print.



3 Configure the setting to output metallic silver ink with VersaWorks, and execute printing.

To use the metallic silver ink, you need to select “CMYKLcLmLkMt” or some other mode that allows printing of metallic silver ink in the print mode of VersaWorks. For details on how to configure the settings, refer to “Chapter 2 Printing.”

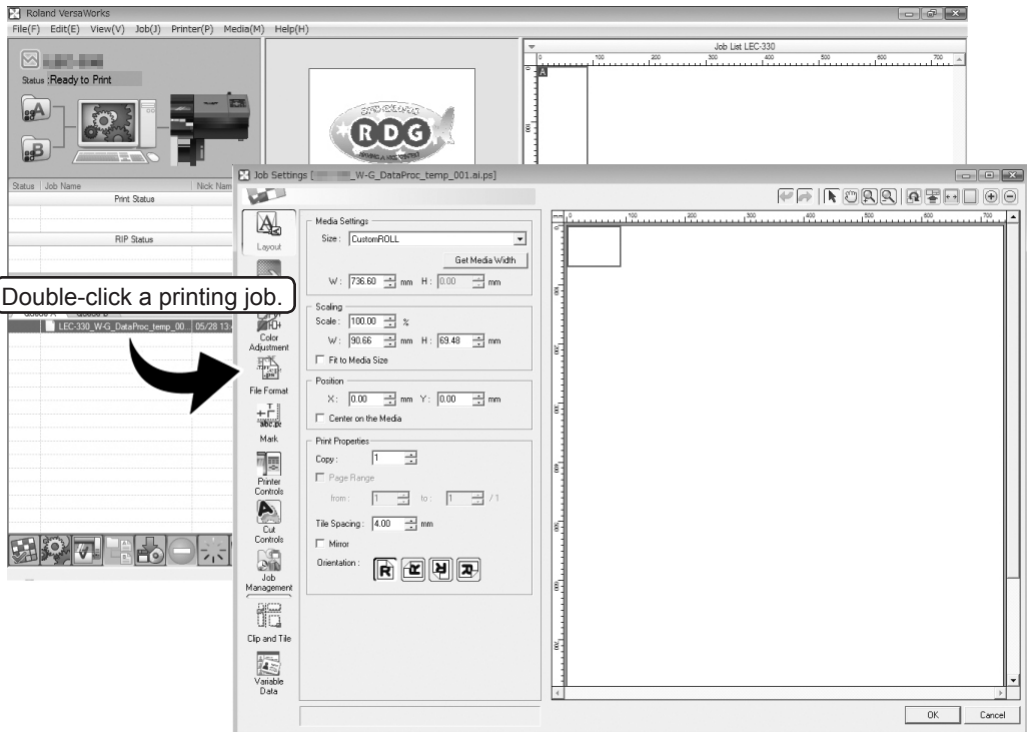
Advanced Operations

Making Printing Settings for Each Job

Procedure

Before printing, double-click the print job list.

The “Job Settings” window appears. This window can be used to configure advanced settings for a specific job, including settings that control printer operation and color adjustment.



Description

When outputting numerous jobs consecutively, print settings that vary between jobs can be troublesome. Accordingly, the “Job Settings” window is where you configure the settings for individual jobs before printing. In other words, with this approach, you configure shared basic settings in the “Queue Properties” window and configure the settings for the individual job in the “Job Settings” window. The settings in the “Job Settings” window are reflections of the settings made in the “Queue Properties” window, so job-specific settings such as color adjustment can be configured.

Generating Special Color Plates

Special color plates (white) can be generated in VersaWorks. To set special color plates in Illustrator, see P. 10 “Creating Printing Data”.

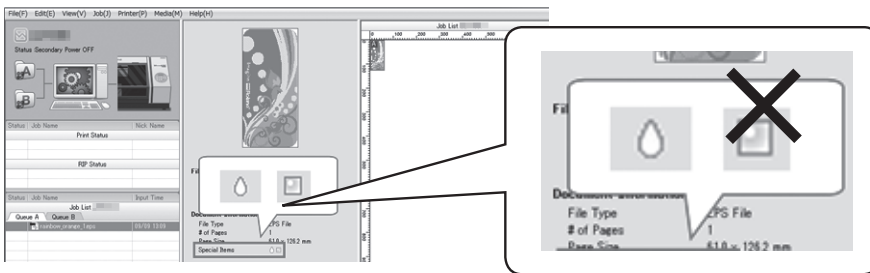
* This function can only be used with VersaWorks Dual.

1. Check whether the data can be used to generate special color plates.

1 In the “Job List,” double-click the job for which you want to generate special color plates.

The [Job Settings] window appears.

2 Check that  and  are not displayed next to [Special Items].



You Cannot Set the Generation of Special Color Plates for the Following Types of Data.

- Vector data that uses [RDG_WHITE]
- Raster data
- Replacement data for variable data printing

2. Generate special color plates.

1 Click .





Under [Quality Settings], use [Mode] to select the special color ink mode to use.

☞ P. 19 “Print Modes”

2 Click .

3 Select [Generate Special Color Plate].

Select [Generated Pattern].

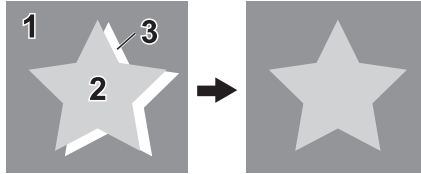
Original image	Print area	Outside print area	Entire image
			
	The plate is generated below the objects.	The plate is generated in locations where no objects are present.	The plate is generated for the entire job size.

4 Click [OK].



Correcting the Position of Special Color Plates

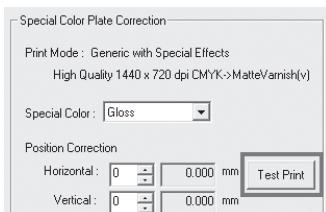
This section explains how to correct the printing position of special plates that have become misaligned, as shown below.

- 1 Media
- 2 Process color
- 3 Special color

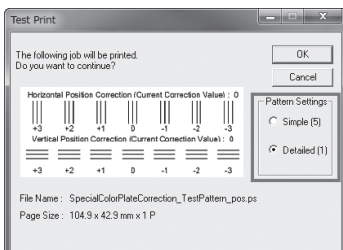


1. Perform a test print.

- 1 In the “Job List,” double-click the print data whose position you want to correct. The [Job Settings] window appears.
- 2 Click .
- 3 Under [Quality Settings], use [Mode] to select the special color ink mode to use.
 ⇨ P. 19 “Print Modes”
- 4 Click .
- 5 Use the [Special Color] list box under [Special Color Plate Correction] to select the special color ink to correct.
- 6 Click [Test Print].



- 7 Select the [Pattern Settings], and click [OK].
 - **Simple:** Select this to make rough adjustments to position misalignments.
 - **Detailed:** Select this to make detailed adjustments to position misalignments.



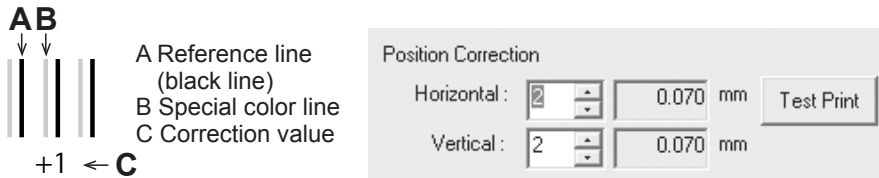
A test pattern is printed.

2. Set the correction value.

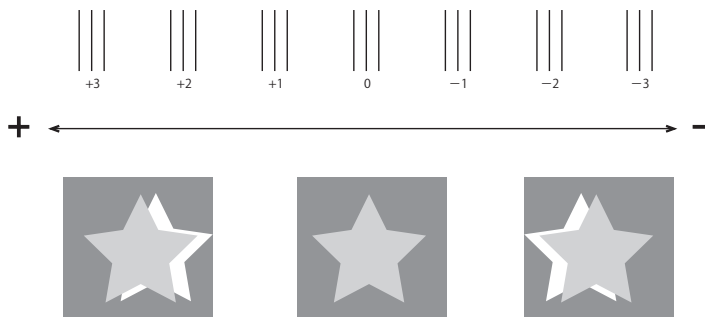
1 Enter the [Horizontal] and [Vertical] correction values.

Select the value on the printed test pattern that results in the least misalignment between A (reference line: black line) and B (the special color line). Enter the C values (which represent the [Horizontal] and [Vertical] correction values) written on the test pattern.

* The test pattern correction values differ for each piece of data. Set the correction values for each piece of data.



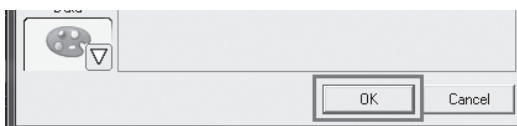
Correction Position and Printing Position in the Horizontal Direction



Correction Position and Printing Position in the Vertical Direction



2 Click [OK].

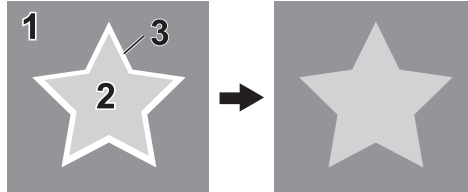


If you have to adjust the size of the special color printing data, proceed to P. 64 "Correcting the Size of Special Color Plates".

Correcting the Size of Special Color Plates

This section explains how to adjust special plates with sizes that have shifted, as shown below. To correct the size, we recommend correcting the position first.

- 1 Media
- 2 Process color
- 3 Special color



1. Perform a test print.

- 1 In the “Job List,” double-click the print data whose size you want to correct.

The [Queue A (B) Properties] window appears.

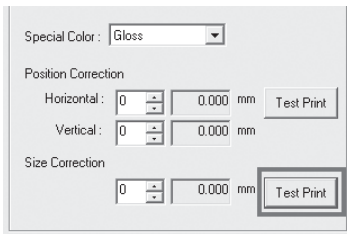
- 2 Click .

Under [Quality Settings], use [Mode] to select the special color ink mode to use.

- 3 Click .

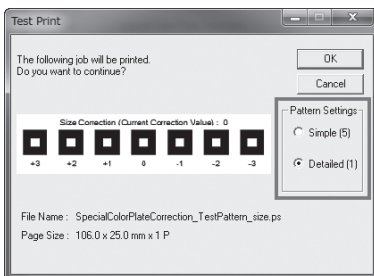
Use the [Special Color] list box under [Special Color Plate Correction] to select the special color ink to correct.

- 4 Click [Test Print].



- 5 Select the [Pattern Settings], and click [OK].

- **Simple:** Select this to make rough adjustments to position misalignments.
- **Detailed:** Select this to make detailed adjustments to position misalignments.



A test pattern is printed.

2. Set the correction value.

1 Enter the [Size] correction value.

Select the value on the printed test pattern that results in the least misalignment between A (reference line: black line) and B (the special color line). Enter the C values (which represent the [Horizontal] and [Vertical] correction values) written on the test pattern.

*The test pattern correction values differ for each piece of data. Set the correction values for each piece of data.

A Reference line (black line)
 B Special color line
 C Correction value

Size Correction
 0 0.000 mm Test Print

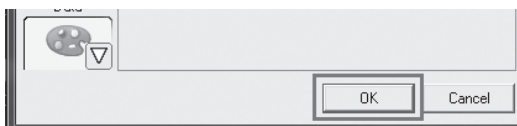
+1 ← C

Correction Value and Printing Position

+3 +2 +1 0 -1 -2 -3

+ ← → -

2 Click [OK].



Maintenance

Message for Ink Circulation

With this machine, white ink and metallic silver ink are circulated periodically to prevent ink precipitation. When the following message appears, please wait until the display changes.

[CIRCULATING INK]

In order to allow the automatic maintenance such as above to be performed, please observe the items below.

- Always keep the main power switched on.
- Do not leave the front cover or any other cover open for a long time.
- Return to the top menu after specifying settings in the menus.

When Uneven Colors and Dot Drop-Out Cannot be Corrected

When using white ink and metallic silver ink, ink discharge may become unstable if the machine is left unattended for a long period. This is due to the properties of the white ink and metallic silver ink ingredients, which tend to settle and separate, causing the precipitated ingredients to solidify after the machine is left unattended for a long period. In such cases, refer to the user's manual of the printer you are using to implement proper cleaning.

If cleaning fails to resolve issues such as dot drop-out, contact your authorized Roland DG Corp. dealer.

3

Advanced







