

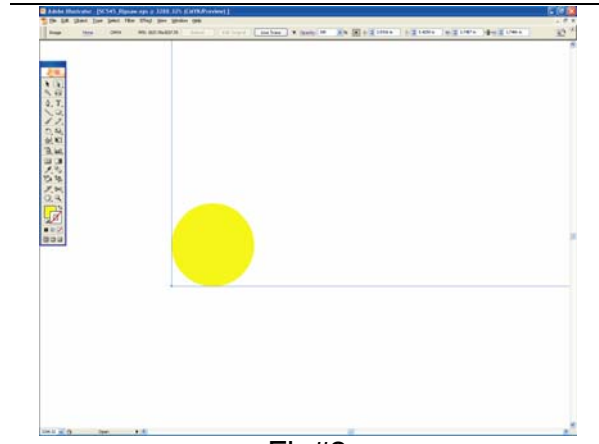
Title: Printing a Double sided banner

Description: The following document describes a method to print on the front and back side of BSOB (Blockout Scrim Banner).

Step One – In your graphic application find the absolute lower left hand edge of the image. If your image has a complex outline similar to Fig#1 draw a bounding box or rectangle around your graphic to find absolute lower left. Once you have located the lower left put a small yellow dot in this location if it is not identifiable after the image is printed (Fig#2). If your image is a perfect rectangle skip to step 2.

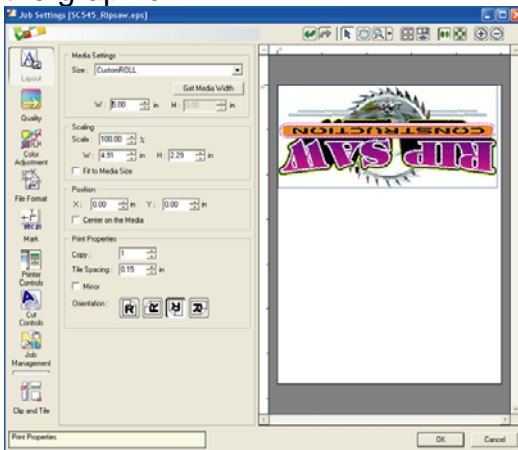


Fig#1



Fig#2

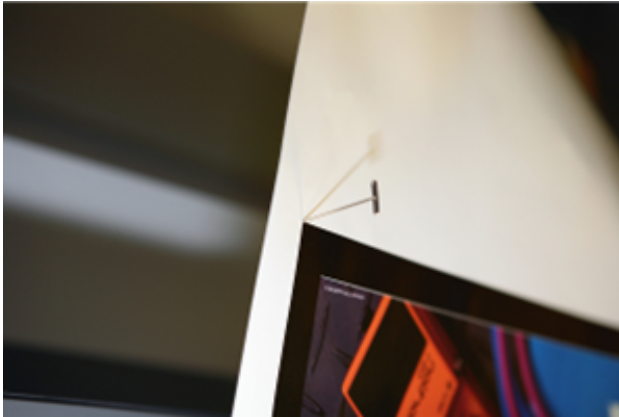
Step Two – Next, Rotate the image so the graphic appears upside down on your monitor as in Fig#3. This orientation will print the image correctly or right side up when it feeds through the printer with the yellow dot in the lower left hand side of the graphic.



Fig#3

Step 3 – After the front side of the image is printed place a small pinhole in the center of the yellow dot or lower left corner of the image as show in (Fig #4). Remember the yellow dot used in the above graphic was only for a complex

outline and not necessary for a rectangular image. Next, sheet cut the image with at least 4 inches of margin on the front and back of your graphic as in (Fig#5).



Fig#4



Fig#5

Step 4 – Next, make sure your pen hole may be visually located on the back side of the media (Fig#6). Re-insert the media with the print side down and in the same feed direction. Front and Rear eye sensors must be covered to initialize the printer. Before you lower the pinch rollers try to align the media without skew. The front edge of the apron or your own line up marks may be used to assist (Fig#7).

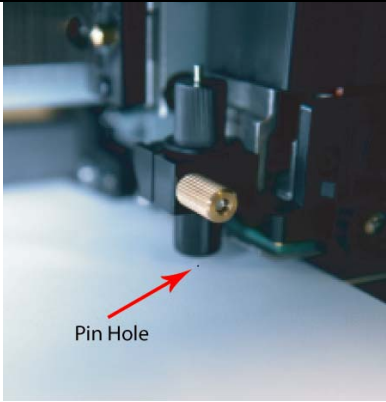


Fig#6



Fig#7

Step-5- For the final step the origin must be set directly above the pin hole. Using the cursor arrows on your control panel move the blade holder directly over the pen hole (Fig#8) and select base point. Now send your file and the front graphic should be registered as the back print like mirrored picture 9.



Pin Hole

Fig#8



Fig#9