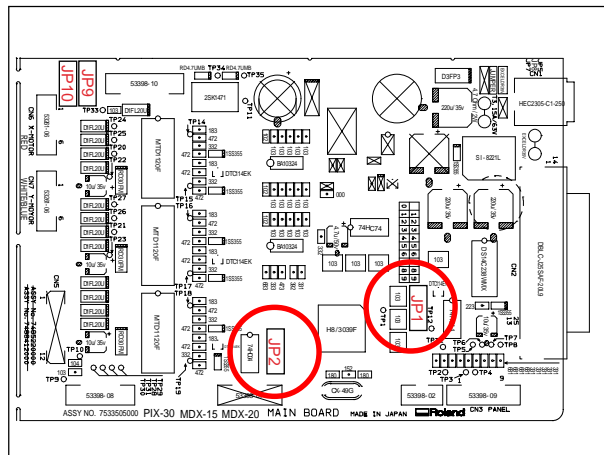
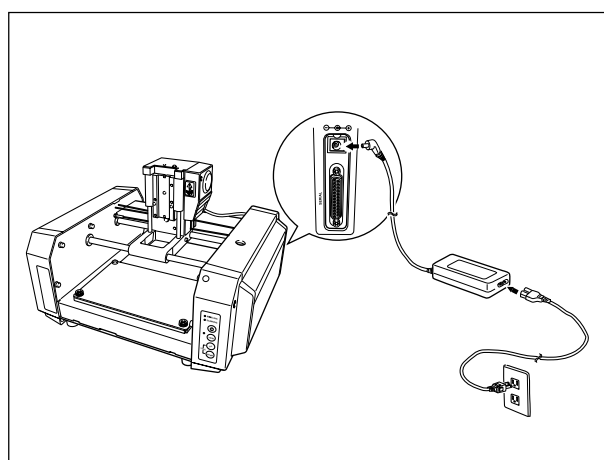


4 Put the 2 JUMPER SWITCHes on JP1 and JP2.

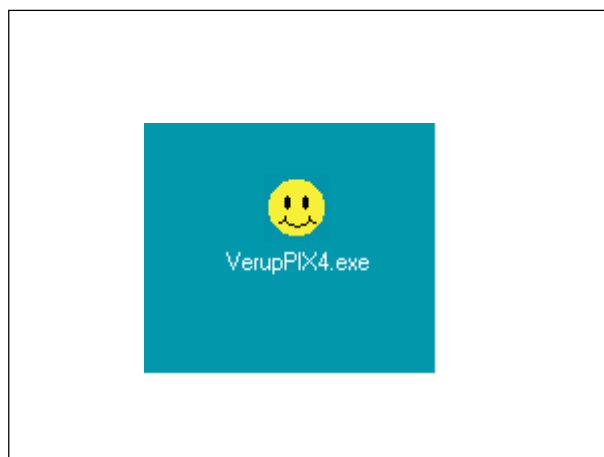


5 Connect the AC ADAPTER to the machine.

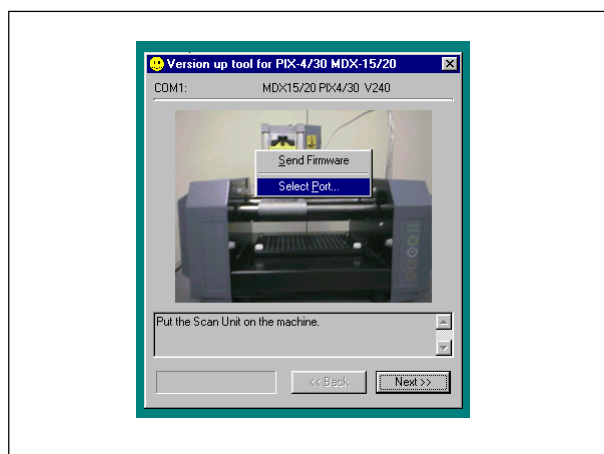


6 Start the VerupPIX4.exe file inside the Firmware Disk.

The dialog appears.



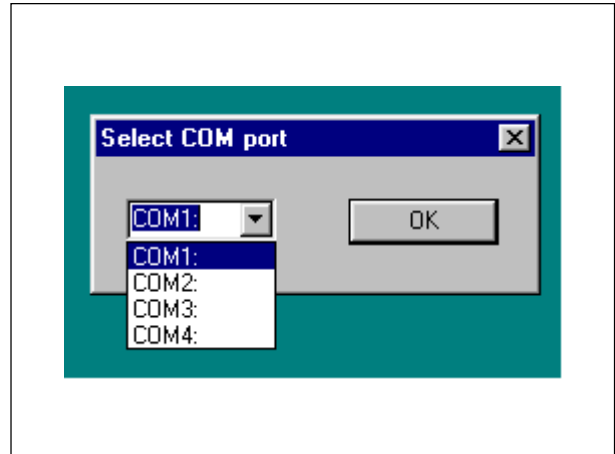
7 Double-click with the Right Mouse Button on the dialog. And click [Select Port].



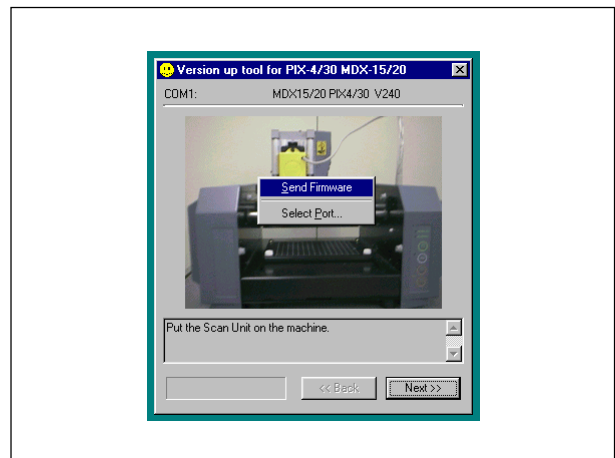
4

4 Adjustment

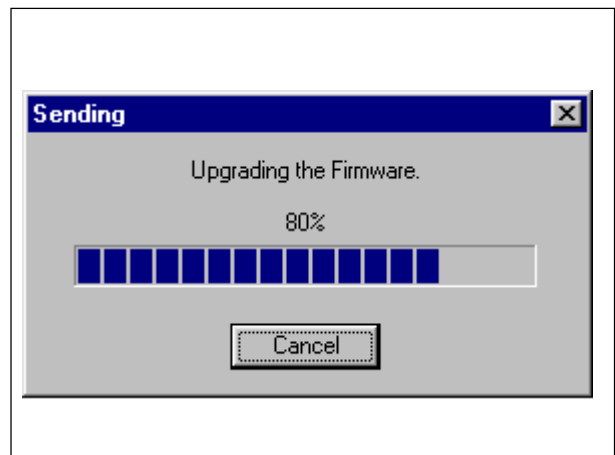
8 Select the right Port and click [OK].



4 **9** Double-click with the Right Mouse Button on the dialog. And click [Send Firmware].



10 The Firmware will be sent to the machine.



11 All LEDs start blinking when upgrading is completed.
If no LED blinks, upgrading has failed.
Try it again.

