

VersaCAMM
DRIVER for USB

Windows
Driver Guide

Thank you very much for purchasing the product.

- To ensure correct and safe usage with a full understanding of this product's performance, please be sure to read through this manual completely and store it in a safe location.
- Unauthorized copying or transferral, in whole or in part, of this manual is prohibited.
- The contents of this operation manual and the specifications of this product are subject to change without notice.
- The operation manual and the product have been prepared and tested as much as possible. If you find any misprint or error, please inform us.
- Roland DG Corp. assumes no responsibility for any direct or indirect loss or damage which may occur through use of this product, regardless of any failure to perform on the part of this product.
- Roland DG Corp. assumes no responsibility for any direct or indirect loss or damage which may occur with respect to any article made using this product.

Copyright © 2004 Roland DG Corporation

All Rights Reserved.

Windows and Windows NT are registered trademarks or trademarks of Microsoft® Corporation in the United States and/or other countries.
Pentium are registered trademarks of Intel Corporation in the United States.
Other company names and product names are trademarks or registered trademarks of their respective holders.

Table of Contents

Part 1: Installation	3
1-1 About This Software	4
What's Included	4
Features of the Printer Driver	4
Systems on Which Installation Is Required	4
Be Sure to Read the "Readme" File	4
1-2 System Requirements	5
System Requirements for the Software	5
System Requirements for USB Connection	5
1-3 Installation	6
Windows XP	6
Windows 2000	8
1-4 What to Do If Installation Is Impossible	11
1-5 Uninstalling and Reinstalling	12
To Uninstall	12
To Reinstall	13
Part 2: Using the Printer Driver	15
2-1 Basic Usage of the Printer Driver	16
Logging On to Windows	16
Basic Printer Driver Settings	16
The Color Mode	17
2-2 Cutting Contour Lines	18
How Cutting Works	18
Printer Driver Settings	18
Drawing Cutting Lines	19
Program Settings	19
2-3 Advanced Printer Driver Settings	20
[Basic] Tab	20
[Media] Tab	20
[Printer Control] Tab	20
[Heater] Tab	20
[Color] Tab	20

Part 1: ***Installation***

1-1 About This Software

What's Included

This is a printer driver that is required for performing printing or cutting from a program. It includes special programs for installing and uninstalling.

Features of the Printer Driver

Output directly from a program is possible, so operation is simple. Unlike a RIP program, it is not capable of detailed settings for color matching and cannot handle CMYK data or the like, but it can obtain high-quality output results with simple settings.

When combined with a drawing program such as Adobe Illustrator or CorelDRAW, it lets you perform printing and cutting.

Systems on Which Installation Is Required

Install this when you want to perform output using the printer driver.

It may also be required when you're using a USB connection between a RIP program and the printer. For more information, refer to the documentation for the RIP program.

Depending on the USB connection, the printer driver may be required in order to enable Windows to recognize the printer. The RIP program does not require the printer driver directly.

Be Sure to Read the "Readme" File

Before you begin the installation, read the "Readme" file on the Setup CD-ROM. It contains late-breaking information that could not be included in this guide.

To read "Readme," double-click [Readme.rtf] on the Setup CD.

1-2 System Requirements

System Requirements for the Software

Operating system	Windows XP or Windows 2000 (Service Pack 2 or later)
CPU	Pentium 4/ 1.5GHz or higher
Memory	512MB or more

System Requirements for USB Connection

Making a USB connection with Windows requires use of a computer that meets all of the following system requirements. Please note that other configurations cannot be supported.

Computer Requirements

- 1) A model preinstalled with either Windows 2000 or Windows XP (This includes models preinstalled with Windows 98/Me and upgraded to Windows 2000/XP. Models preinstalled with Windows 95/NT 4.0 are not supported.)
- 2) Computer on which USB operation is assured by the computer manufacturer

Whether a USB connection is possible depends on the specifications of the computer. To determine whether the computer you're using is capable of correct USB operation, check with the manufacturer of the computer. Use a shielded USB cable having a length of three meters or less. Do not use a USB hub or the like.

1-3 Installation

! Notice

Keep the printer and the computer unconnected until you carry out this installation operation. Failure to follow the correct procedure may make installation impossible.

☞ See "1-4 What to Do If Installation Is Impossible."

Windows XP

1 Start Windows and log on as "Administrator."
Shut down all other programs except Windows.

2 Insert the Setup CD into the computer's CD-ROM drive.

3 Switch on the printer and connect the printer to the computer using a USB cable.
The [Found New Hardware Wizard] appears.

4 Choose [Install the software automatically], then click [Next].

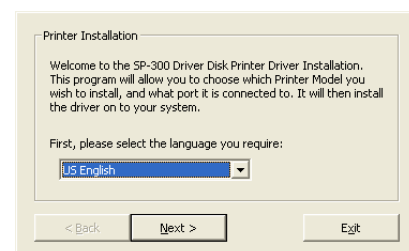


5 When this window appears, click [Continue Anyway].

After the preparations for installation, the installation window appears.

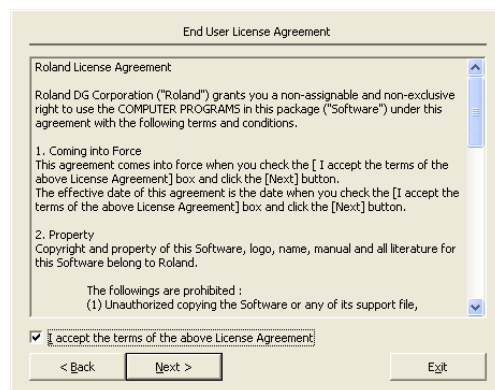


6 Choose the language, then click [Next].

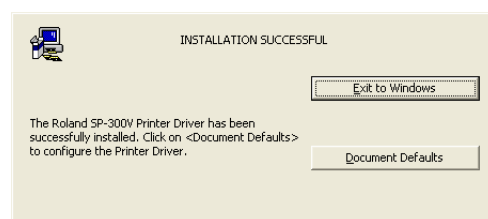


- 7 Read the End User License Agreement. If you agree, select the [I accept the terms of the above License Agreement] check box, then click [Next].

The required files are copied.



- 8 Click [Exit to Windows]. However, if a [Restart Windows] button appears here, then click this to finish.



- 9 Click [Finish]. This completes the installation procedure.

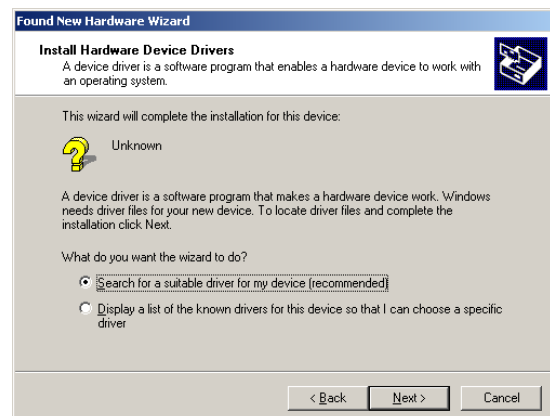


Windows 2000

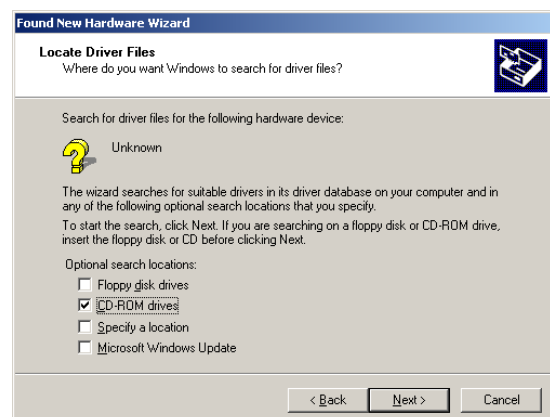
- 1 Start Windows and log on to an account with "Administrators" rights.
Shut down all other programs except Windows.
- 2 Insert the Setup CD into the computer's CD-ROM drive.
- 3 Switch on the printer and connect the printer to the computer using a USB cable.
The [Found New Hardware Wizard] appears.
- 4 Click [Next].



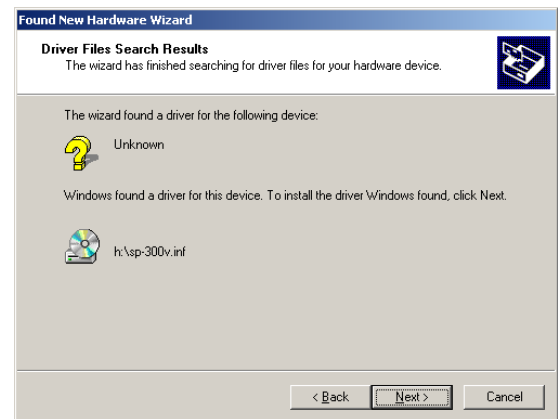
- 5 Choose [Search for a suitable driver for my device], then click [Next].



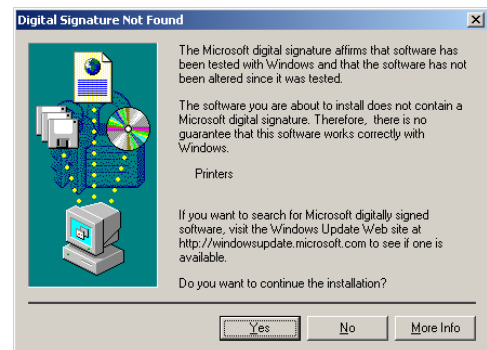
- 6 Select the [CD-ROM drives] check box, then click [Next].



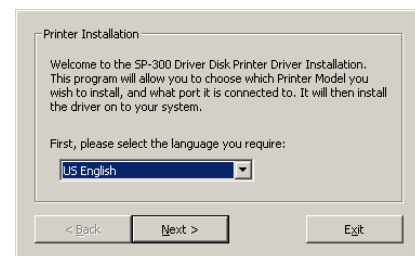
7 Click [Next].



8 When this window appears, click [Yes].
After the preparations for installation, the installation window appears.

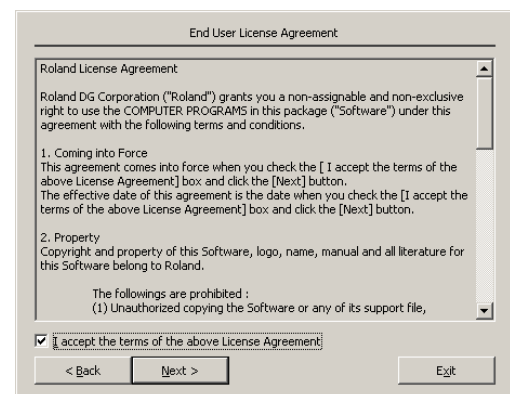


9 Choose the language, then click [Next].

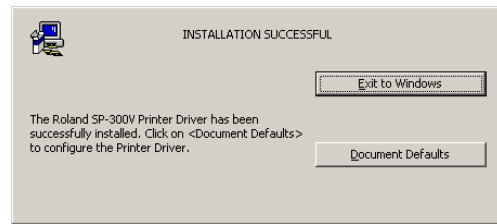


10 Read the End User License Agreement. If you agree, select the [I accept the terms of the above License Agreement] check box, then click [Next].

The required files are copied.



- 11** Click [Exit to Windows].
However, if a [Restart Windows] button appears here, then click this to finish.



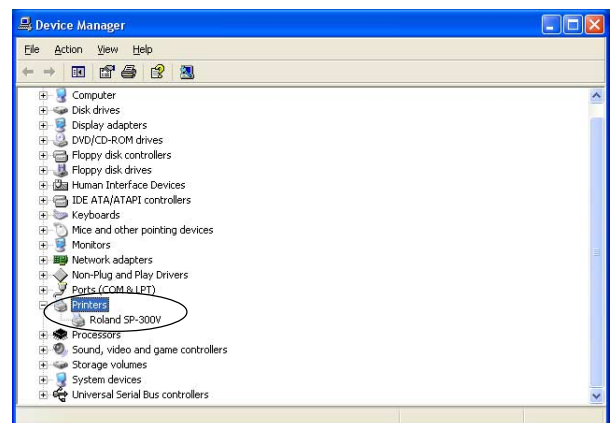
- 12** Click [Finish].
This completes the installation procedure.



1-4 What to Do If Installation Is Impossible

If installation quits partway through, or if the wizard does not appear when you make the connection with a USB cable, take action as follows.

- 1** If the [Found New Hardware Wizard] appears, click [Finish] to close it.
- 2** For Windows XP
Click the [Start] menu, then right-click [My Computer].
Click [Properties].
For Windows 2000
Right-click [My Computer] on the desktop. Click [Properties].
- 3** Click the [Hardware] tab, then click [Device Manager].
The [Device Manager] appears.
- 4** At the [View] menu, click [Show hidden devices].
- 5** In the list, find [Printers] or [Other device], then double-click it.
When your printer or [Unknown device] appears below the item you selected, click it to choose it.
- 6** Go to the [Action] menu and click [Uninstall].
- 7** Close the [Device Manager] and click [OK].
- 8** Detach the USB cable connected to the printer.
- 9** Restart Windows.
- 10** Follow the procedure in "1-3 Installation" to redo installation from the beginning.



1-5 Uninstalling and Reinstalling

To Uninstall

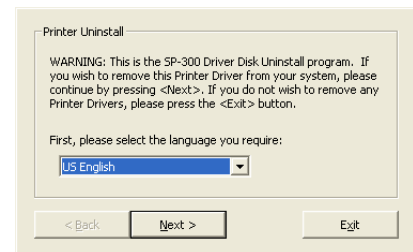
To remove the printer driver, you use the dedicated uninstaller. Never try to delete the printer driver directly from the [Printers] folder or the like.

1 Start Windows and log on as "Administrators."
Shut down all other programs except Windows.

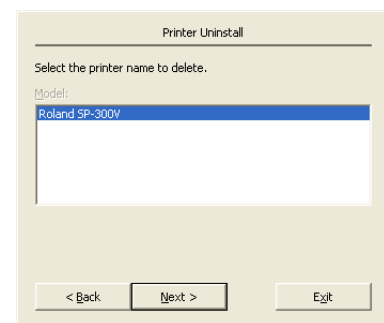
2 Insert the Setup CD into the computer's CD-ROM drive.

3 Display [My Computer], then open the CD-ROM drive.
Double-click [SP-300Z.EXE].
The uninstaller starts.

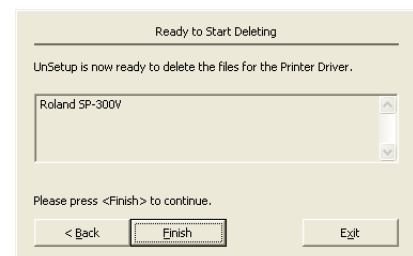
4 Choose the language, then click [Next].



5 Make sure of the name of the printer to uninstall, then click [Next].



6 Click [Finish].
The uninstallation process starts.



7 Click [Restart Windows].
Windows restarts automatically. If you clicked [Exit to Windows], then restart Windows manually. This completes the uninstallation process.

To Reinstall

If a file associated with the printer driver becomes lost for some reason, then reinstall the printer driver. To reinstall, you first uninstall the printer driver, and then carry out reinstallation.

- 1** Follow the steps in the previous section to uninstall the printer driver.

- 2** Follow the procedure in "1-3 Installation" to perform a new installation of the printer driver.

Part 2:
Using the Printer Driver

2-1 Basic Usage of the Printer Driver

Logging On to Windows

To use this printer driver, log on as "Administrators" account. Operations may be restricted when logged on to another kind of account -- for example, you may not be able to create user-defined media sizes.

Basic Printer Driver Settings

To make the settings for the printer driver, use the program to display the printer settings, or go into Windows and display [Printing Preferences].

The basic settings include the following items. At this time, leave the other items at their default settings.

To perform cutting, you must also make the appropriate settings in the program. For more information, refer to "2-2 Cutting Contour Lines" and the "Readme" file.



Point

To Display [Printing Preferences] in Windows

1. For Windows XP:
From the [Start] menu, choose [Control Panel], then [Printers and Other Hardware], then [Printers and Faxes].
For Windows 2000:
From the [Start] menu, choose [Settings], then [Printers].
2. Right-click the driver icon, then click [Printing Preferences].

The settings you make here are saved as the default values for the printer driver.
Note that depending on the program, however, these default values may not be enabled.

[Basic] Tab

[Media Type]

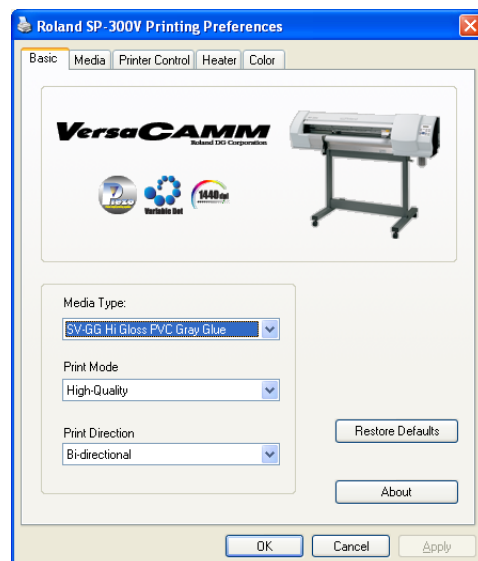
Here you select the type of media. Printing matched to the selected media is carried out.

[Print Mode]

Here you select the printing quality. This determines whether priority is given to image quality or to speed.

[Print Direction]

Selecting "Uni-directional" yields higher image quality, but printing time is longer than when "Bi-directional" is selected.

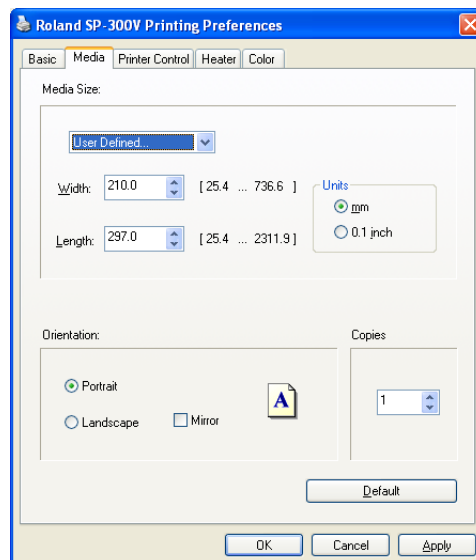


[Media] Tab

[Media Size]

Selecting "User Defined" allows you to freely set the width and length.

This media size indicates the size of the media minus the margins -- that is, the output area for the printer. Be sure to note that it is not the size of the media itself.



The Color Mode

The printer driver can only work with RGB colors. Depending on the program, it may also be able to handle CMYK colors or the like, but in principle you should use only RGB colors. Otherwise the intended colors may not be printed. For cutting lines, be sure to use only RGB colors. For more information, refer to "2-2 Cutting Contour Lines."

2-2 Cutting Contour Lines

How Cutting Works

When you use a program to draw a line in a certain specific color, it becomes a "cutting line." When image data contains cutting lines, those lines are cut. All other images are printed.

You use the printer driver to make the setting for the line color that is used for cutting lines.

Printer Driver Settings

You use the printer driver to make the setting for the color that causes lines to be treated as cutting lines and the setting that determines whether cutting is performed.

[Printer Control] Tab

[Job Type]

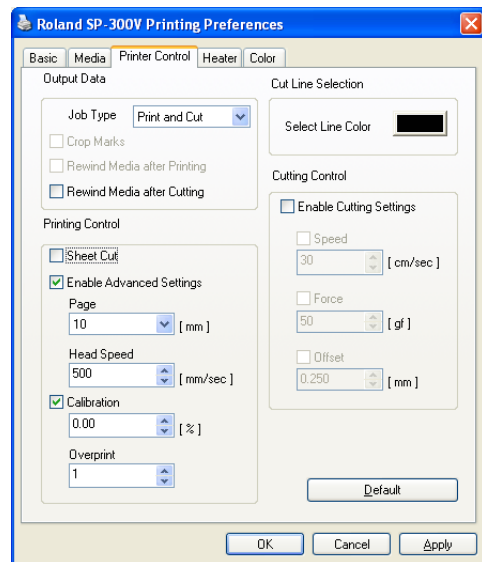
"Print and Cut": First printing is performed, and then, if cutting lines are present, cutting is also carried out.

"Print Only": Only printing is performed. Any cutting lines that are present are ignored.

"Cut Only": No printing at all is performed; only cutting is carried out. If no cutting lines are present, then no operation is performed.

[Select Line Color]

You can change the color that the printer driver uses to identify cutting lines. Clicking the color chip displays a window for setting the color. Make the change as required. The default value is "RGB = 1, 1, 1."



Drawing Cutting Lines

1. Cutting Lines Drawn Using a Drawing Program

The cutting lines must be vector data. Paths drawn using a drawing program are typical examples of this. The bitmap data used by paint programs cannot be made into cutting lines, even if the data is in the form of narrow lines.

2. Cutting-line Color

Set the line color to "RGB = 1, 1, 1." Be sure to specify an RGB color. Only the lines of this color are cut. When necessary, you can use the printer driver settings to change the color used for cutting lines.

3. Cutting-line Width

The setting for the width is also required. In principle, you should make the setting for the narrowest width possible with the program. If the width is not specified, the lines may not be cut.

Several other program settings are also required. Refer to the next section, "Program Settings."

Program Settings

You need to make some settings in the program to enable the printer driver to recognize cutting lines.

The method you use to make the settings differs from one program to another.

For information about program settings, be sure to read the "Readme" file on the Setup CD.

To read "Readme," double-click [Readme.rtf] on the Setup CD.

Point

In general, the program must be capable of the following in order for the printer driver to be able recognize cutting lines.

- The cutting lines must be drawn using vector data.
- The width of the cutting lines must be the narrowest setting possible with the program.
- The color mode for the cutting lines must be RGB.
- The color of the cutting lines must be something other than "RGB = 0, 0, 0."
- Color management must not be applied to the monitor display.
- In order to cut text, the text must be outlined (that is, converted to graphics).

2-3 Advanced Printer Driver Settings

[Basic] Tab

[Media Type]

Here you select the type of media. Printing matched to the selected media is carried out.

[Print Mode]

Here you select the printing quality. This determines whether priority is given to image quality or to speed.

[Print Direction]

Selecting "Uni-directional" yields higher image quality, but printing time is longer than when "Bi-directional" is selected.

[Media] Tab

[Media Size]

Selecting "User-defined" allows you to freely set the width and length.

This media size indicates the size of the media minus the margins -- that is, the output area for the printer. Be sure to note that it is not the size of the media itself.

[Units]

Here you can select the measurement unit used for "User Defined" sizes.

[Orientation]

This lets you change the orientation to portrait or landscape, or to perform mirror-image inversion.

[Copies]

Here you specify the number of copies to output.

[Printer Control] Tab

[Job Type]

"Print and Cut": First printing is performed, and then, if cutting lines are present, cutting is also carried out.

"Print Only": Only printing is performed. Any cutting lines that are present are ignored.

"Cut Only": No printing at all is performed; only cutting is carried out. If no cutting lines are present, then no operation is performed.

[Crop Marks]

Selecting this check box when [Job Type] is set to "Print Only" performs printing with crop marks.

Selecting this check box when [Job Type] is set to "Cut Only" performs automatic detection of crop marks before a cutting operation.

When [Job Type] is set to "Print and Cut," this check box is not available for selection.

[Rewind Media after Printing]

When the printing for one page ends, the media is automatically returned to the starting location.

[Rewind Media after Cutting]

When the cutting for one page ends, the media is automatically returned to the starting location.

[Sheet Cut]

This selects whether the media is cut off after output of one page ends.

[Page]

This sets the blank margin between pages. You can make this setting when the [Enable Advanced Settings] check box has been selected.

[Head Speed]

This specifies the speed of the printing carriage during printing operations. Making the setting for an unsuitable value may adversely affect the printing results. You can make this setting when the [Enable Advanced Settings] check box has been selected.

When you select [Media Type] at the [Basic] tab, an optimal value for the selected media is entered here automatically.

[Calibration]

This sets the adjustment value for the media-movement distance in the feed direction. When this check box is not selected, the setting made on the printer is used. You can make this setting when the [Enable Advanced Settings] check box has been selected.

When you select [Media Type] at the [Basic] tab, an optimal value for the selected media is entered here automatically.

[Overprint]

This makes the setting for ink overprinting. When "2" is specified, twice as much ink as usual is used. You use this when especially large amounts of ink are required.

You can make this setting when the [Enable Advanced Settings] check box has been selected.

[Select Line Color]

You can change the color that the printer driver uses to identify cutting lines. Clicking the color chip displays a window for setting the color.

[Enable Cutting Settings]

Selecting this check box makes it possible to make the settings for cutting parameters. When this is not selected the settings made on the printer are used.

[Heater] Tab

[Enable Heater Settings]

Selecting this check box makes it possible to make the settings for temperature and the like. When this is not selected the settings made on the printer are used.

[Enable Fan Control Setting]

This sets the suction force used to hold the media against the platen and prevent it from coming loose. When this is not selected the settings made on the printer are used.

[Drying Time]

This sets the wait time that passes after the printing for one page ends until the printing for the next page starts. When you're performing printing and cutting, this is the wait time after printing ends until cutting starts.

[Color] Tab

This lets you adjust the colors for printing. A sample image allows you to examine the effects of adjustment.



26015508 - R1

R1-041008