



# **Roland CutChoice Installation Guide**

## **- for CorelDRAW 11 User -**

August 4, 2003

**Roland DG Corporation**

# **Contents**

**Step 1 : Install USB Driver**

**Step 2 : Install Roland CutChoice**

**Step 3 : Upgrade Roland CutChoice to Ver. 1.1A and  
Install Plug-in for CorelDRAW 11**

**Step 4 : Set Up Roland CutChoice**

**Step 5 : Set Axis Rotate Menu only for CX-500/400/300**

**Step 6 : Set Up Folder Options**

**Step 7 : Add Cut/Plot to Tool Bar**

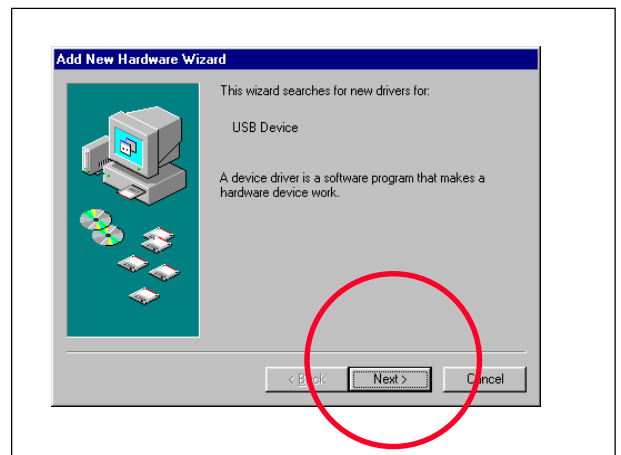
## Step 1. Install USB Driver - - Windows 98 / Me

When using the Roland CutChoice on **Windows98** or **WindowsMe**, it is necessary to install the **USB Driver**.

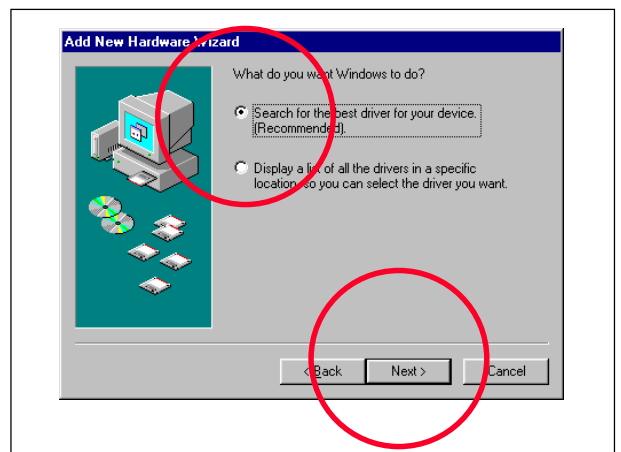
- 1 Turn on the machine and connect it to PC with the USB Cable.

- 2 **Add New Hardware Wizard** dialog appears.

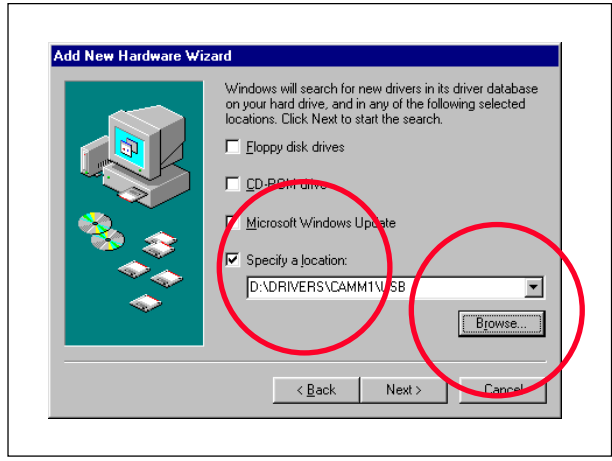
Click **Next**.



- 3 Select "**Search for the best driver for your device. (Recommended)**" and click **Next**.



**4** Select "Specify a location" and click **Browse**.

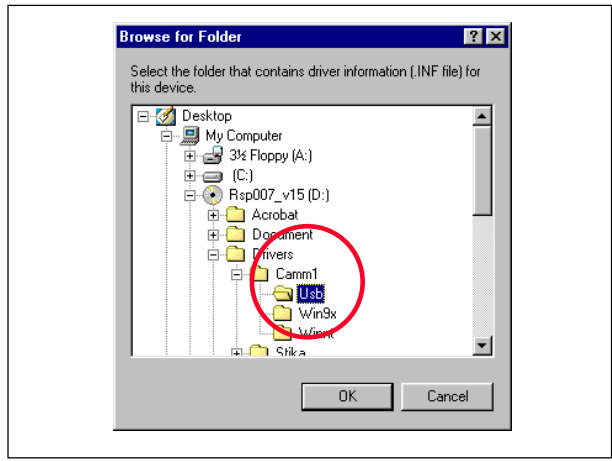


**5** Insert the **Roland Software Package RSP-007 Ver. 1.50 and above** or the **Roland Software Package RSP-029 Ver. 1.0 and above** in the CD-ROM drive. If the Installer starts, close it.

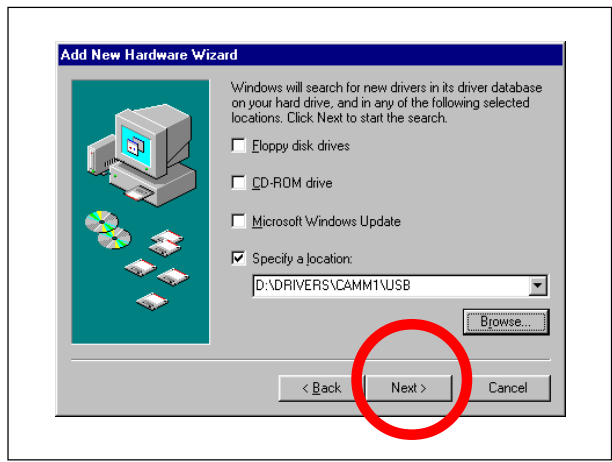
If you do not have it, you can download the USB Driver from the Roland DG Official Website.

**6** Select **Rsp007 > Drivers > Camm1 > Usb Folder** (in this case).

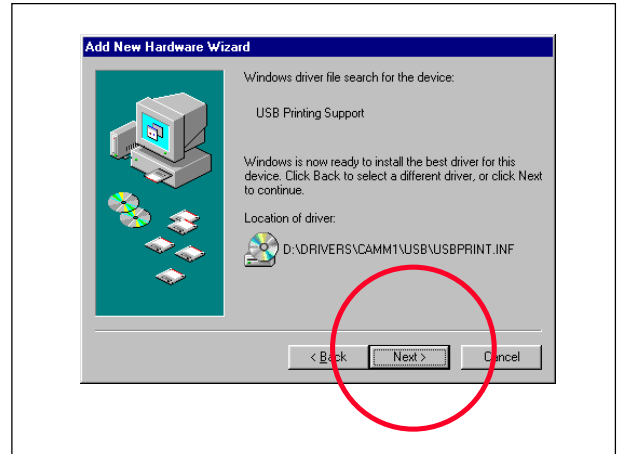
Click **OK**.



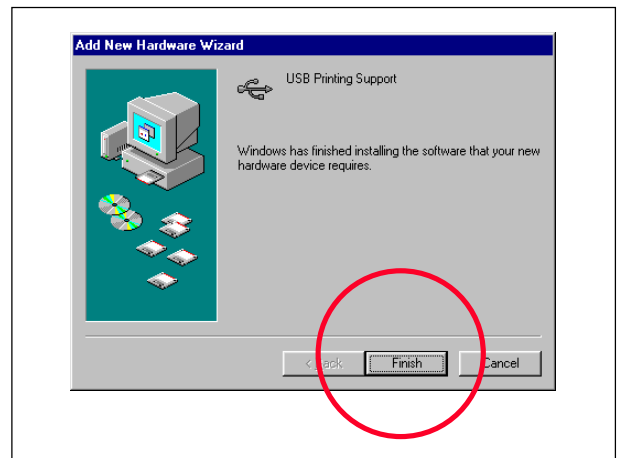
**7** Click **Next**.



**8** Click **Next**.



**9** Click **Finish**.



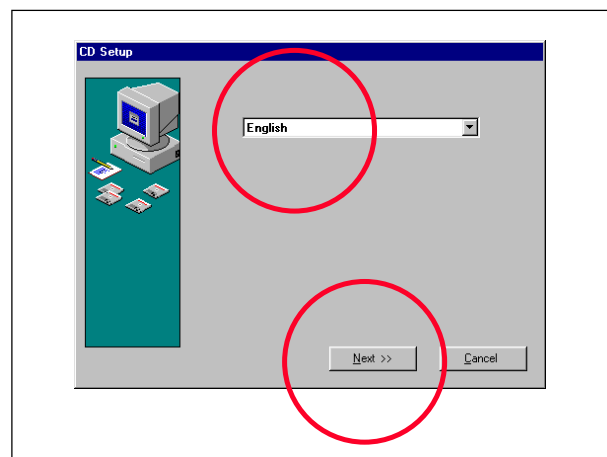
## Step 2. Install Roland CutChoice - - - Windows 98 / Me / 2000

**1** Turn on the machine and connect it to PC with the USB Cable.

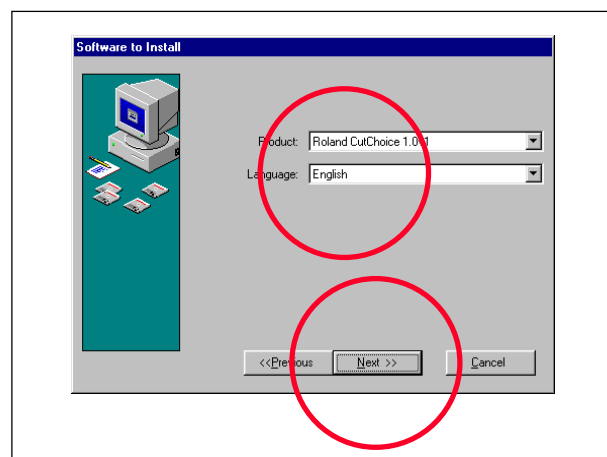
**2** Insert the **Roland CutChoice RSP-023 Ver.1.10 or Ver. 1.1A** in the CD-ROM drive.

If you have the **Roland Software Package RSP-029**, insert it in the CD-ROM drive, select the machine and click **Install** at **Roland CutChoice**.

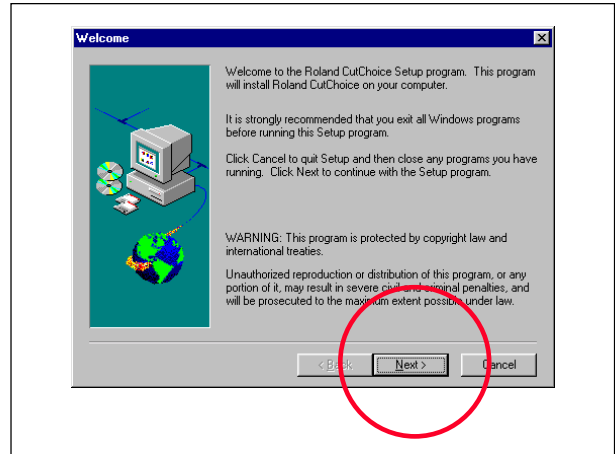
**3** Select **English** and click **Next**.



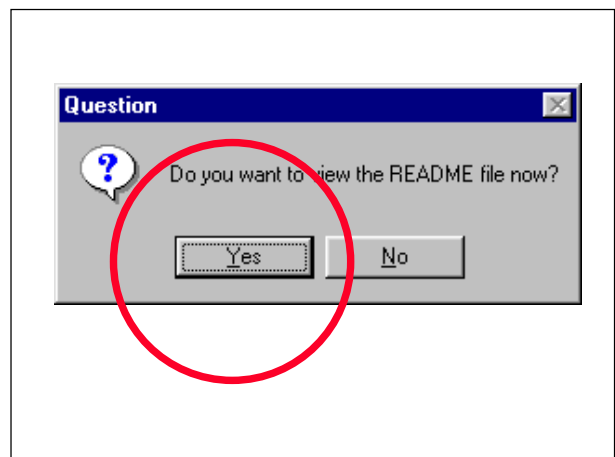
**4** Select **English** and click **Next**.



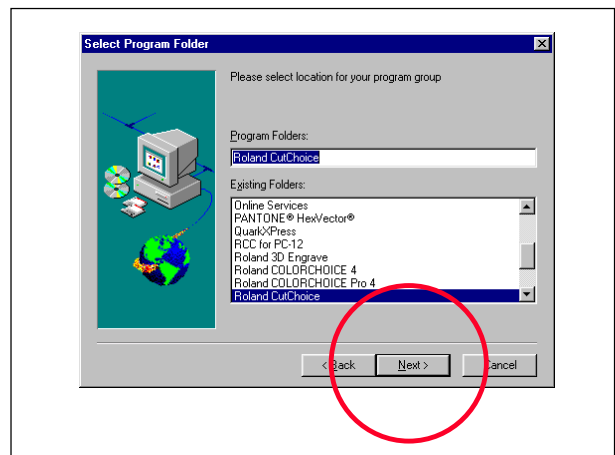
**5** Click **Next**.



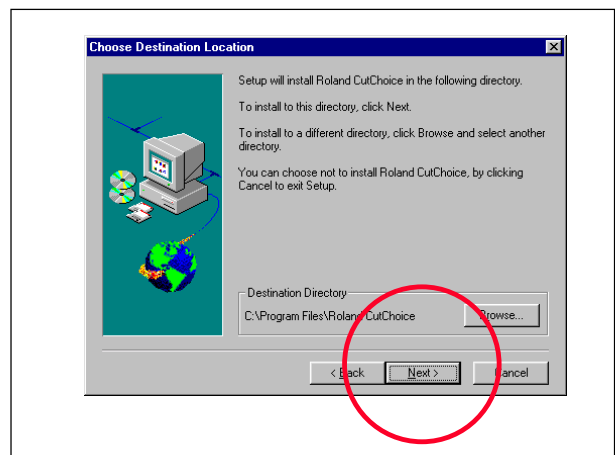
**6** Click **Yes**.  
Important information is described in the Readme file.



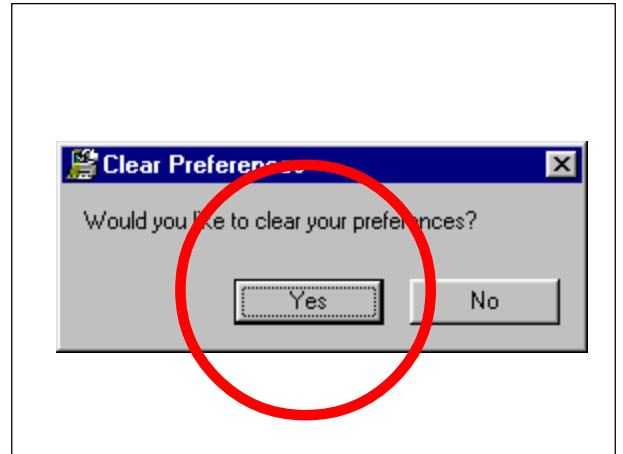
**7** Click **Next**.



**8** Click **Next**.

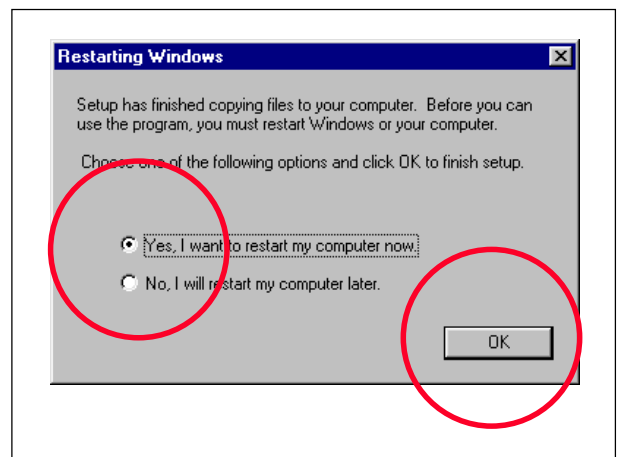


**9** Click **Yes**.



**10** Select "**Yes, I want to restart my computer now.**" and click **OK** to restart.

After restarting, the **Roland CutChoice** Icon will be created on the desk top.





## Step 3. Upgrade Roland CutChoice to Ver. 1.1A and Install Plug-in for CoreIDRAW 11 - - - Windows 98 / Me / 2000

In order to fix the problem in Ver. 1.1, firstly, it is necessary to **upgrade the CutChoice to Ver. 1.1A**.

After that, **install the Plug-in for CoreIDRAW 11** by Updater.

- When the CutChoice Ver. 1.0B/C/D is installed, it is necessary to **upgrade it to Ver. 1.10** by Updater which you can download from the Roland DG Official Website.

In this case, you do not need to upgrade it to Ver. 1.1A.

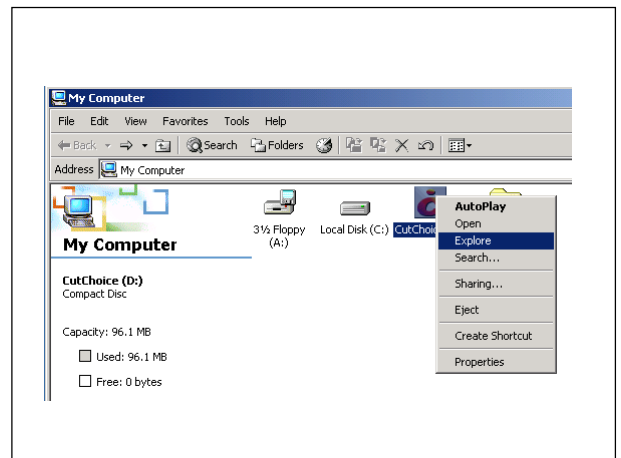
### Upgrade the CutChoice to Ver. 1.1A

- 1 If you upgraded the CutChoice to Ver. 1.10 from Ver. 1.0B/C/D, go to **10**.

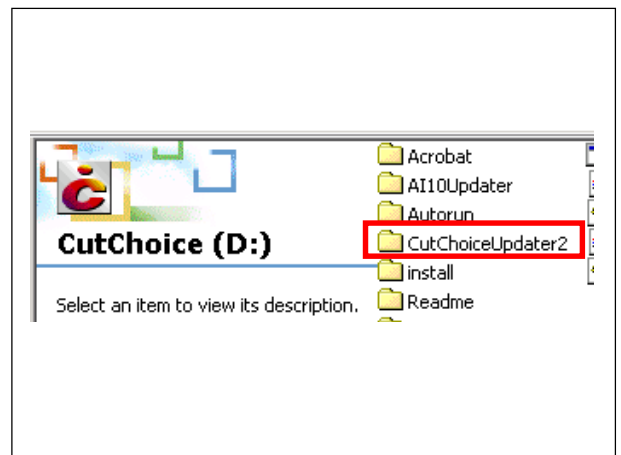
Open **My Computer**, right-click the **CutChoice Icon** and select **Explore**.

(In case of the Roland Software Package RSP-029 or the Roland CutChoice RSP-023 Ver. 1.1A.)

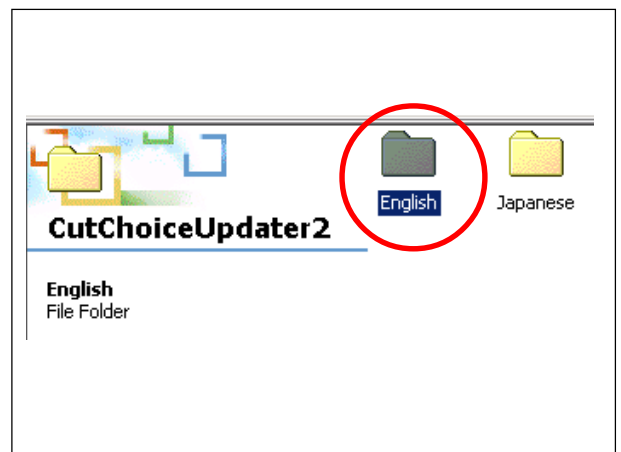
If you do not have it, you can download the Updater from the Roland DG Official Website.



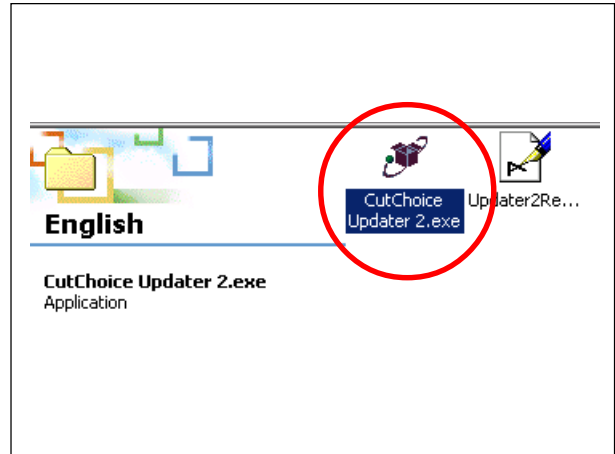
- 2 Open the **CutChoiceUpdater2 Folder**.



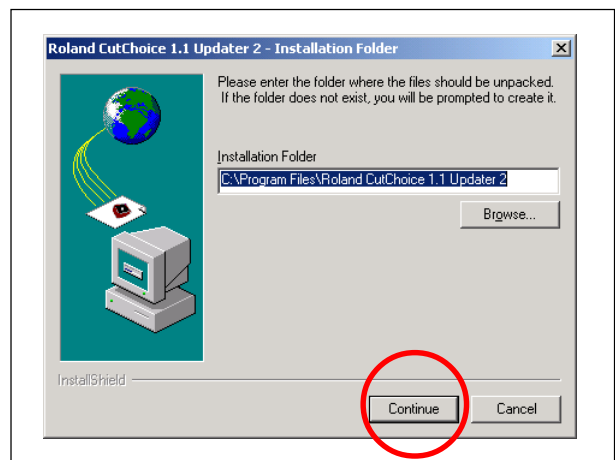
- 3 Open the **English Folder**.



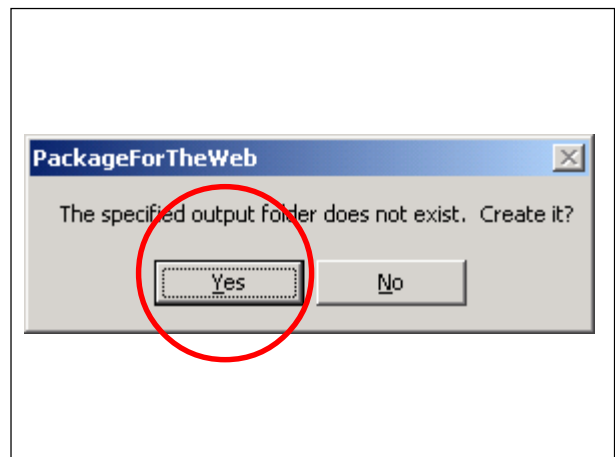
4 Double click the **CutChoiceUpdater 2.exe**.



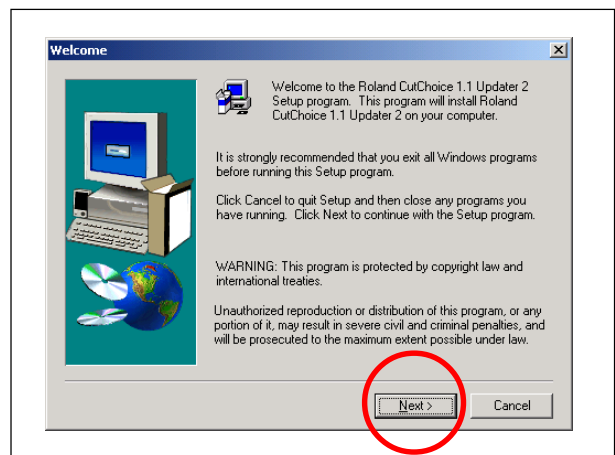
5 Click **Continue**.



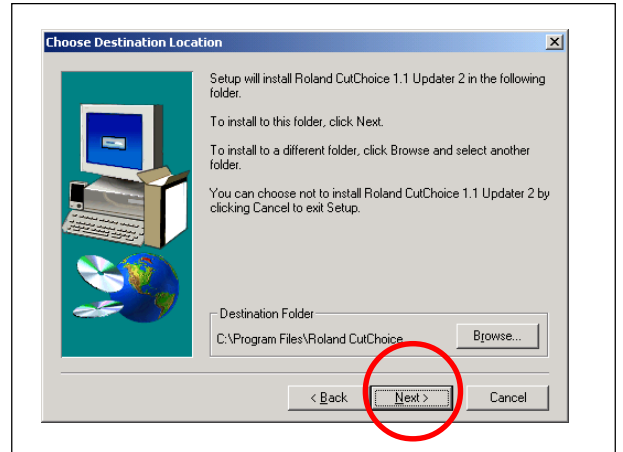
6 Click **Yes**.



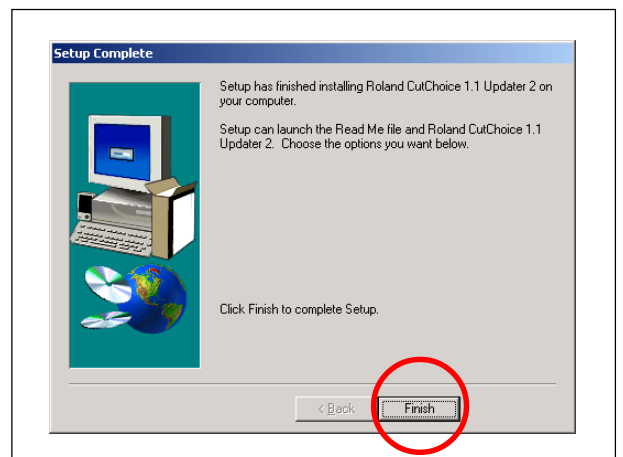
7 Click **Next**.



**8** Click **Next**.



**9** Click **Finish**.

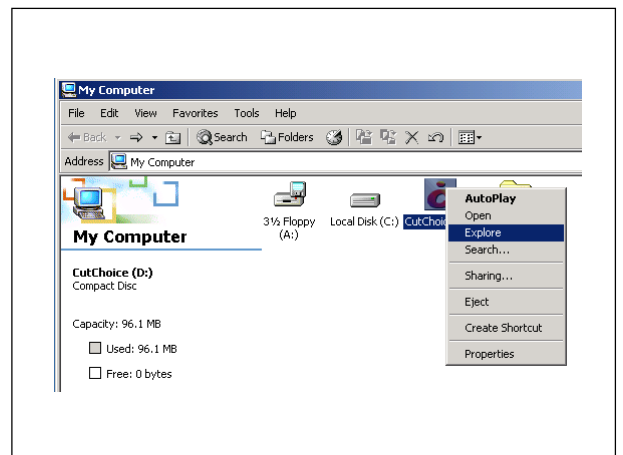


### Install the Plug-in for CorelDRAW 11

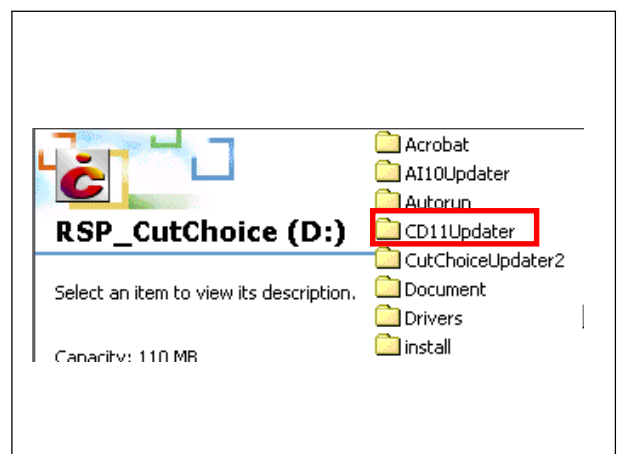
**10** Open **My Computer**, right-click the **CutChoice Icon** and select **Explore**.

(In case of the Roland Software Package RSP-029.)

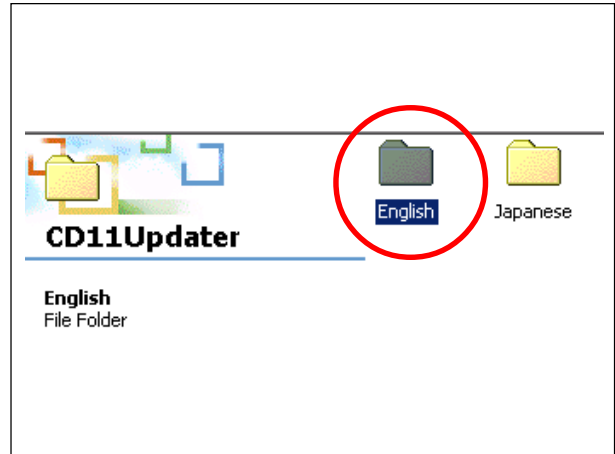
If you do not have it, you can download the Updater from the Roland DG Official Website.



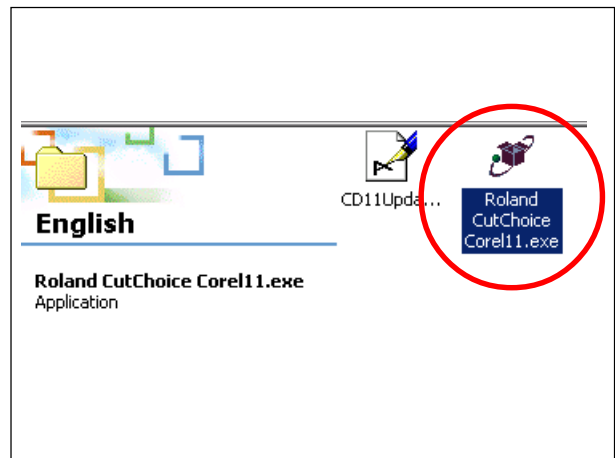
**11** Open the **CD11Updater Folder**.



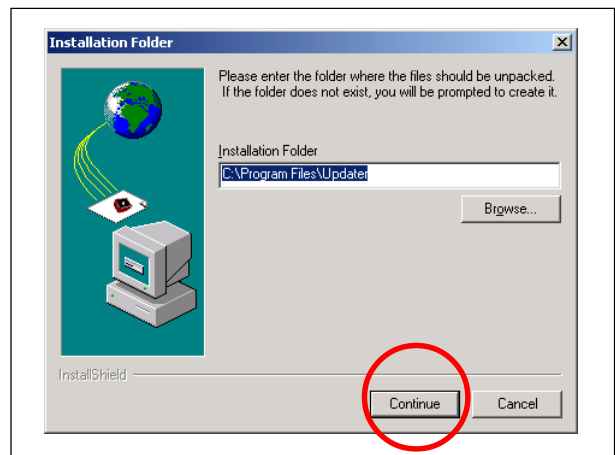
**12** Open the **English Folder**.



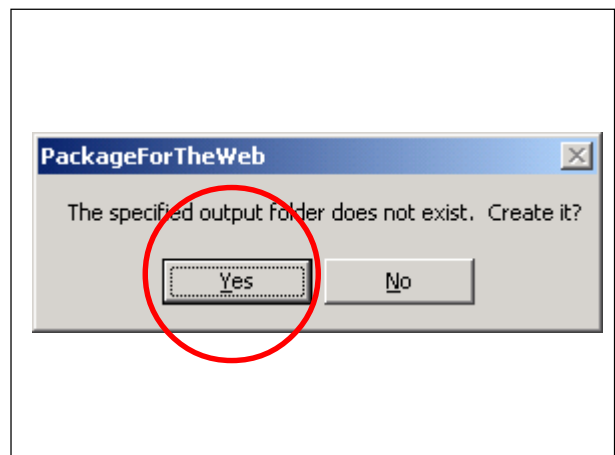
**13** Double click the **RolandCutChoiceCorel11.exe**.



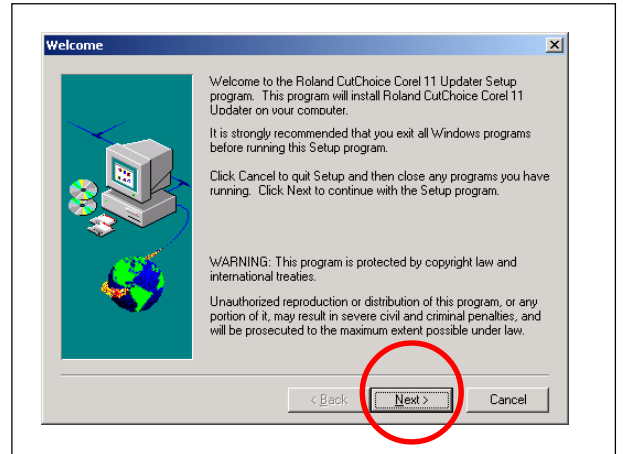
**14** Click **Continue**.



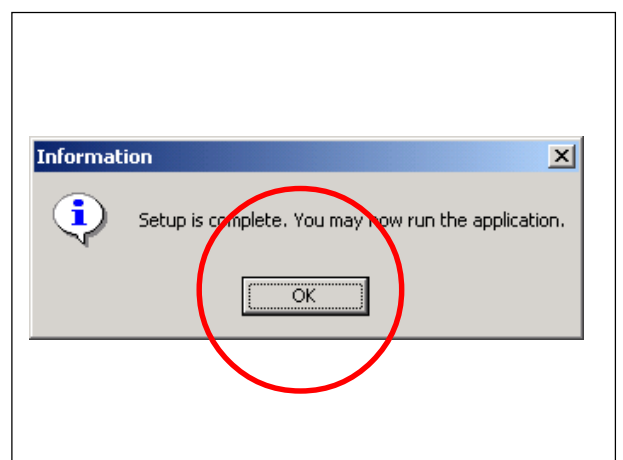
**15** Click **Yes**.



**16** Click **Next**.



**17** Click **OK**.

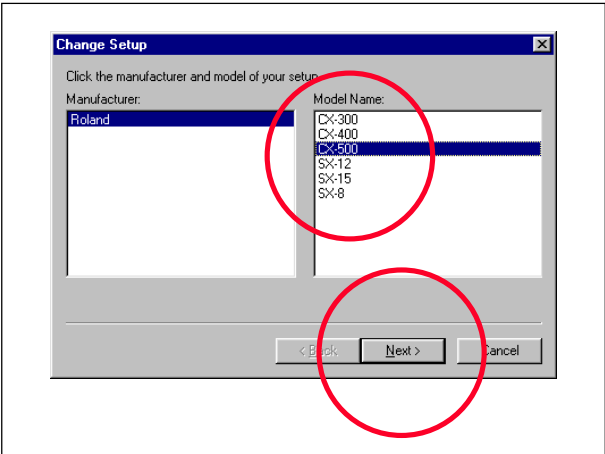


# Step 4. Set Up Roland CutChoice - - - Windows 98 / Me / 2000

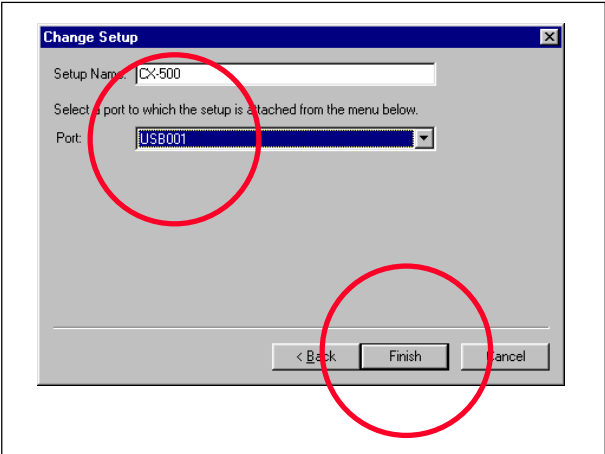
It is necessary to turn on the machine and connect it to PC with the USB Cable when you set up the CutChoice.

**1** Double-click the **Roland CutChoice** Icon on the desk top.

**2** Select the machine which is connected to PC and click **Next**.



**3** Select **USB00\*** from **Port** Pull Down Menu and click **Finish**.

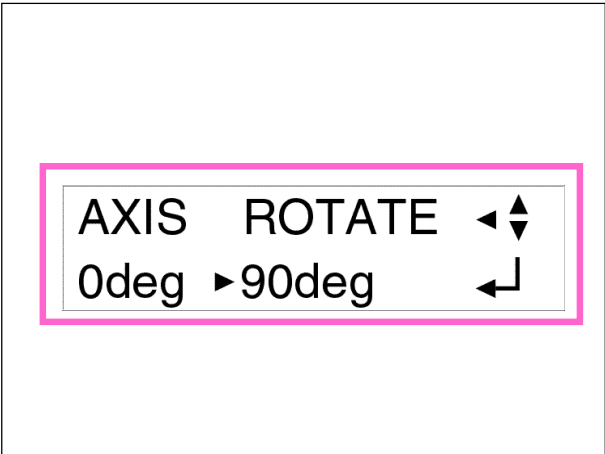


## Step 5. Set Axis Rotate Menu - - - only for CX-500/400/300

When you use the CutChoice with CX-500 / 400 / 300, it is necessary to **select 90 degrees in AXIS ROTATE** Menu in the machine.

**1** Turn on the machine.

**2** Enter the **AXIS ROTATE** Menu and Select **90deg**.

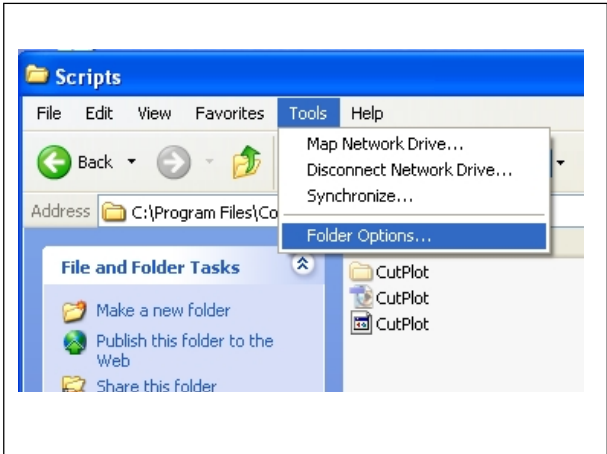


# Step 6. Set Up Folder Options - - - - Windows 98 / ME / 2000

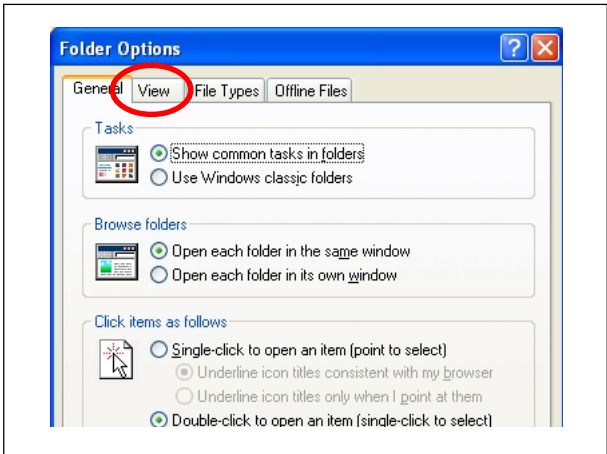
It is necessary to check [Show hidden files and folders] to have CutPlot.bmp displayed.

1 Open any folder.

2 Select **Tools** Menu > **Folder Options**.

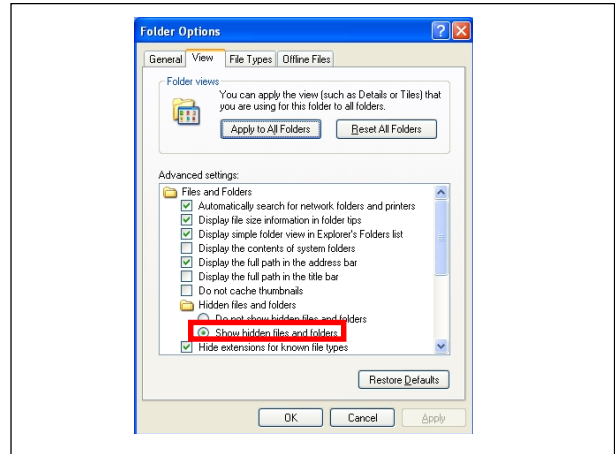


3 Click **View** Tab.

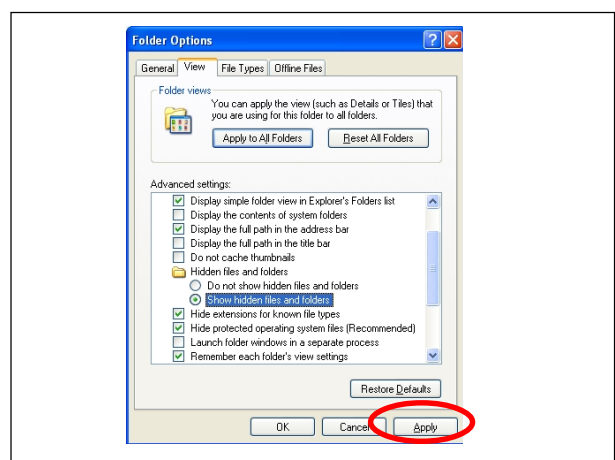




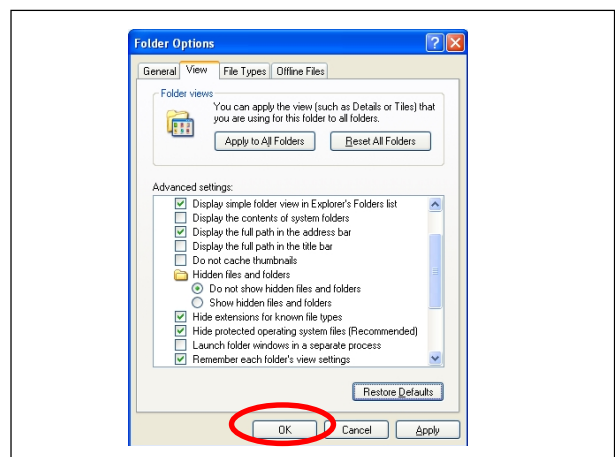
**4** Check **Show hidden files and folders** from **Files and Folders > Hidden files and folders**.



**5** Click **Apply**.



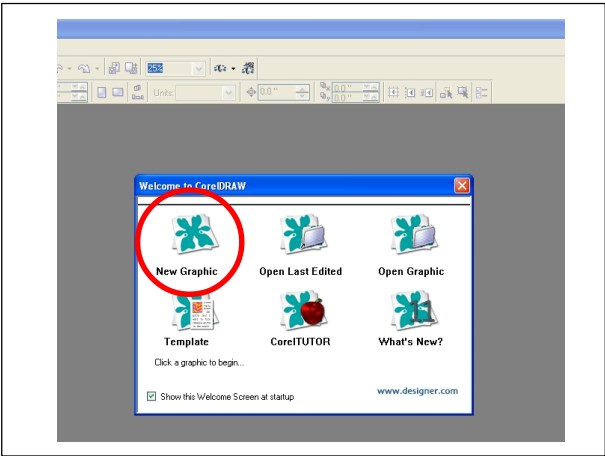
**6** Click **OK**.



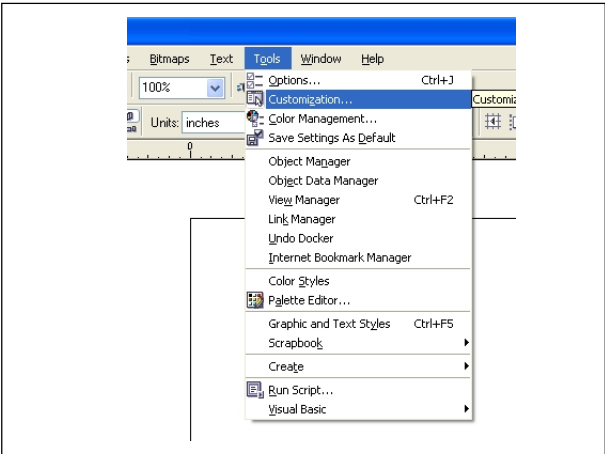
# Step 7. Add Cut / Plot to Tool Bar - - - Windows 98 / ME / 2000

In order to use the CutChoice from CorelDRAW directly, it is necessary to add the Cut/Plot to the Tool Bar.

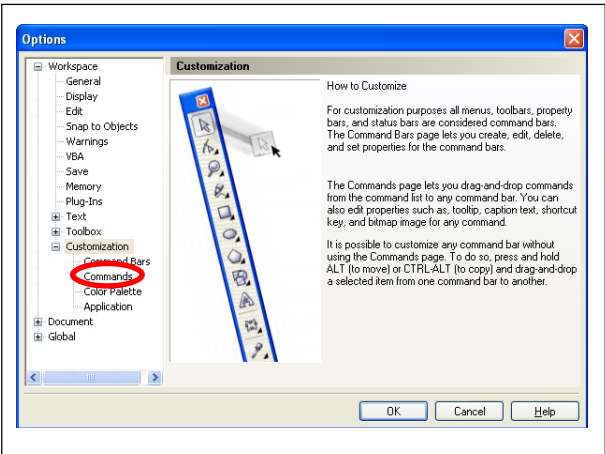
**1** Start the **CorelDRAW 11** and open the **New Graphic**.



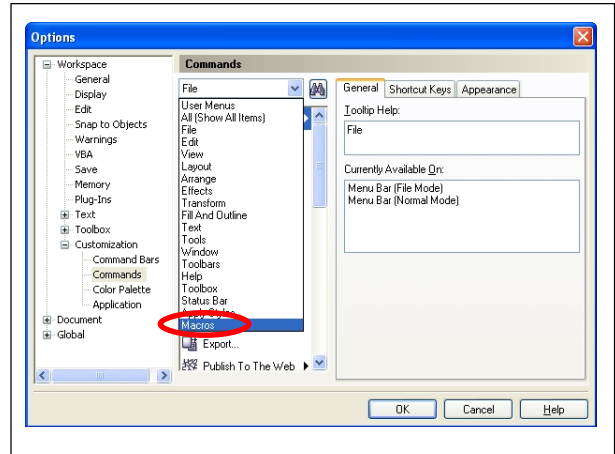
**2** Select **Tools Menu > Customization**.



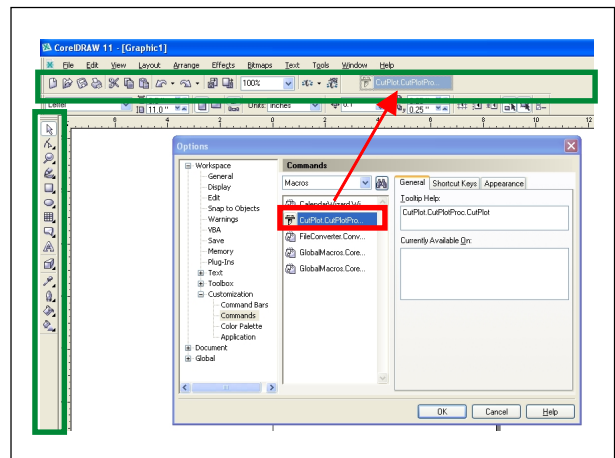
**3** Select **Workspace > Customization > Commands**.



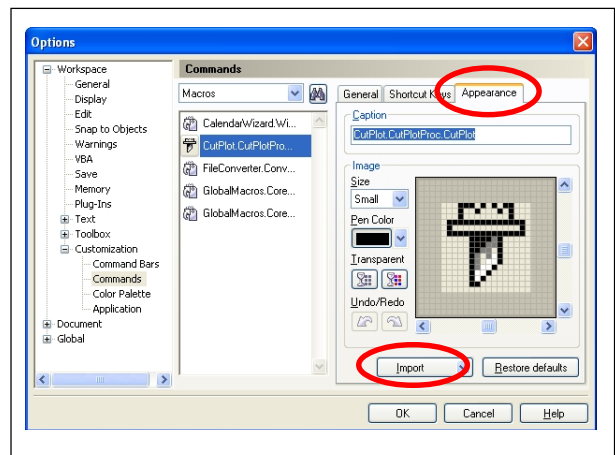
4 Select **Macros** from **File** Pull Down Menu.



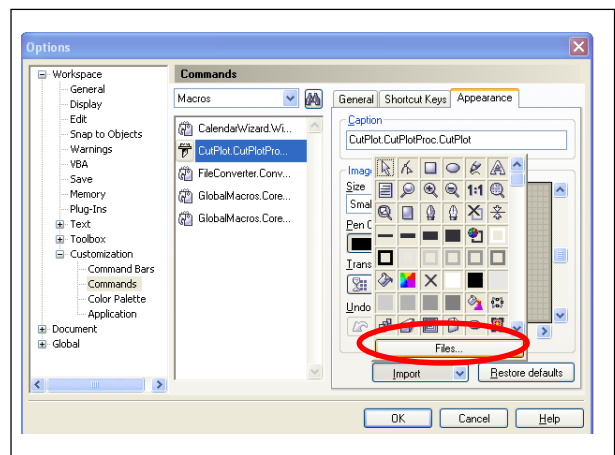
5 Select **CutPlot.CutPlotProc.CutPlot** Icon from **Macros** List and drag & drop it to the **Tool Bar**.



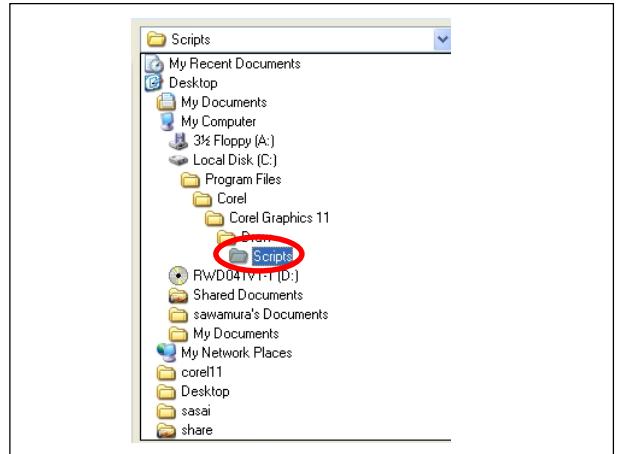
6 Click **Appearance** Menu and click **Import**.



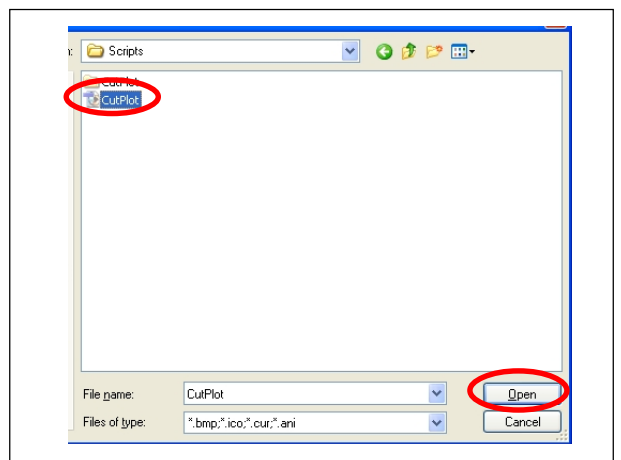
7 Click **Files**.



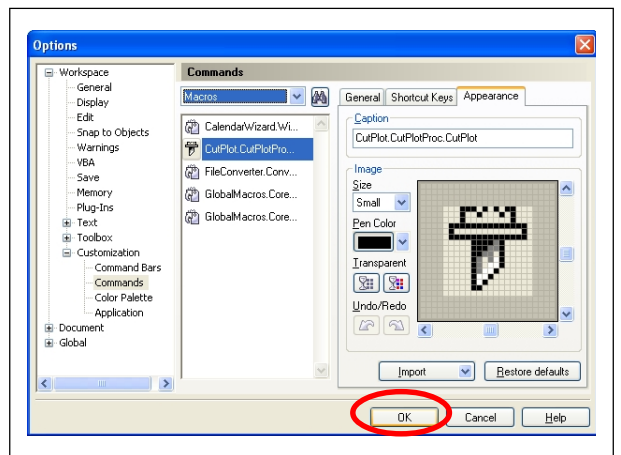
8 Open **Scripts** from **Program Files > Corel > Corel Graphics 11 > Draw**.



9 Select **CutPlot** and click **Open**.



10 Click **OK**.



11 Confirm that the **CutPlot.CutPlotProc.CutPlot** Icon is in the **Tool Bar**.

