

Support Bulletin: RASD-SB00016

Model: Roland CutStudio

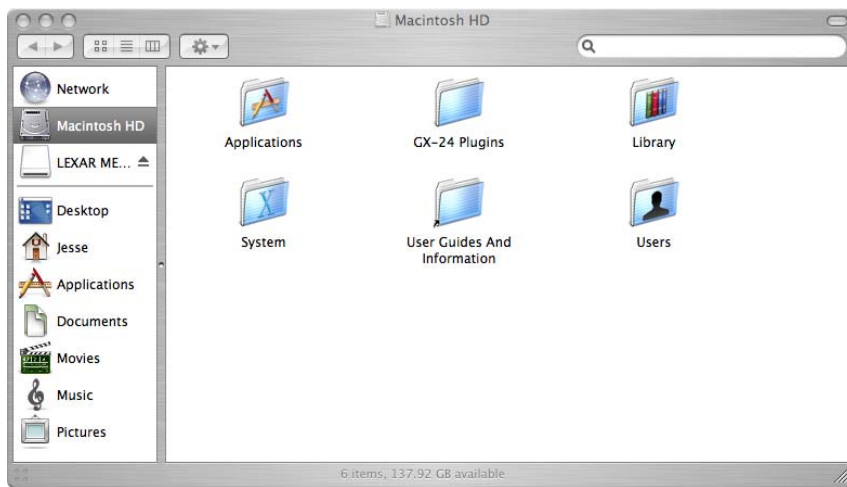
Subject: Setting Permissions for CutStudio Plugin (Macintosh only)

Date: 2/24/2006

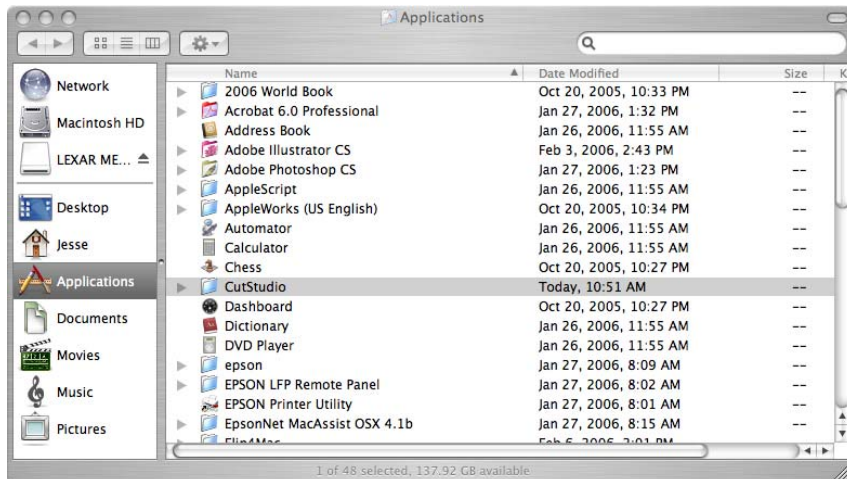
Author: RR

The following document outlines how to setup the proper permissions for Roland CutStudio Macintosh Plugin to output Adobe Illustrator cut data properly for users who are not the primary accounts on a Macintosh or who do not have administrative permissions.

1. Login as the primary account holder with administrative privileges.
2. Open the Macintosh HD



3. Open the Applications folder and highlight the CutStudio folder.



Support Bulletin: RASD-SB00016

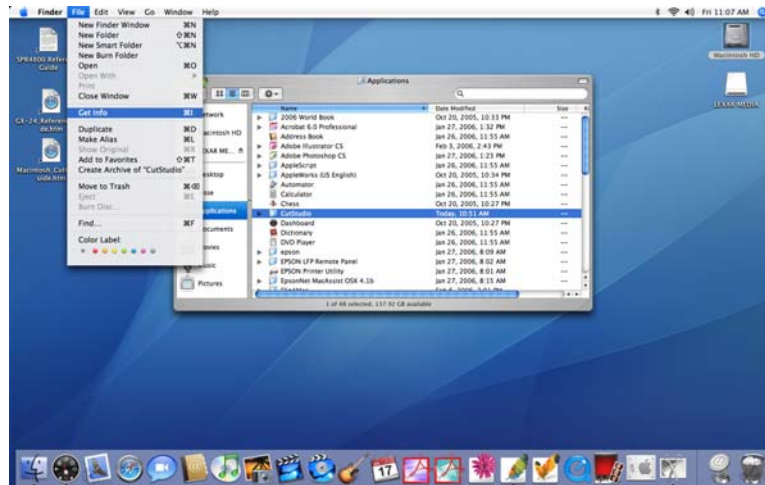
Model: Roland CutStudio

Subject: Setting Permissions for CutStudio Plugin (Macintosh only)

Date: 2/24/2006

Author: RR

4. With the CutStudio folder highlighted, click on File and Get Info.



5. Go to Ownership & Permissions and expand.
6. Expand Details.



Support Bulletin: RASD-SB00016

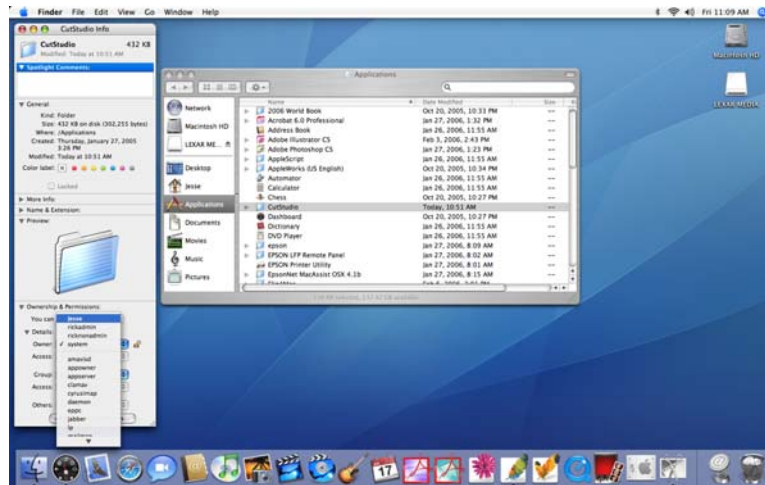
Model: Roland CutStudio

Subject: Setting Permissions for CutStudio Plugin (Macintosh only)

Date: 2/24/2006

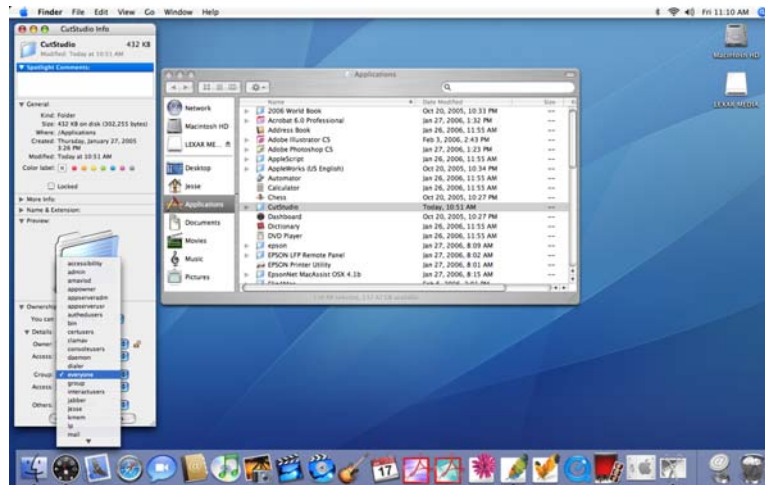
Author: RR

7. Unlock and set the primary account as the Owner.



8. Access for the Owner should be set to Read & Write.

9. Group should be set to everyone. If everyone is not listed, click on Others and select everyone from the list.



10. Once selected Access and Others should also be set to Read & Write.

Support Bulletin: RASD-SB00016

Model: Roland CutStudio

Subject: Setting Permissions for CutStudio Plugin (Macintosh only)

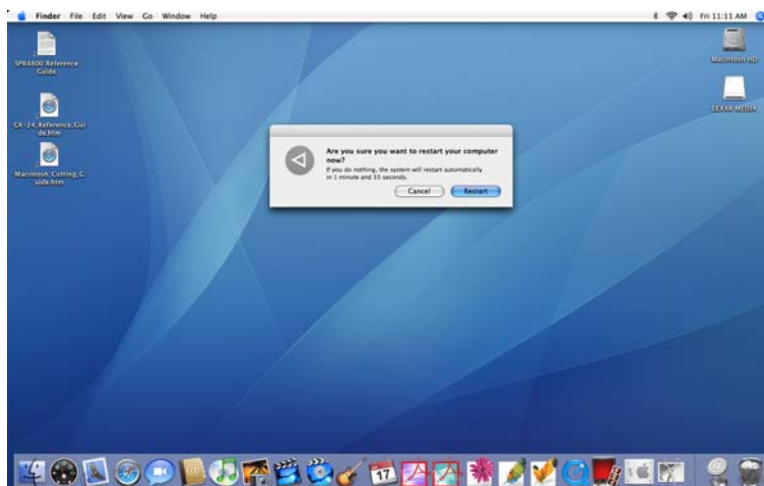
Date: 2/24/2006

Author: RR

11. Set Owner to System (this will give all users rights to cut via CutStudio).



12. Close all open Windows and applications and restart the Macintosh.



13. Once logged in, the user should now be able to cut from Adobe Illustrator via the Roland CutStudio Plugin.