

PASSPORT



Service Bulletin

1/24/2008

Bulletin No: Network_Connectivity

Model: SP-540/PROII

Author: Service Team

Network Connectivity

WINDOWS XP – SP & PRO II SERIES PRINTERS THAT USE VERSAWORKS HOW TO CONFIGURE THE PRINTER FOR USE WITH A CROSSOVER CABLE

Below are instructions on how to configure the computer and printer IP addresses when using a crossover cable on Windows XP. After you make the physical cable connections to the printer and computer, check to see if the green lights are lit on the back of the network card on the printer. The top light should be a solid green indicating a connection to the computer. If the top light is not lit either the crossover cable is damaged or the network card on the CPU is not functioning properly. The bottom light can either flash (indicating the network address has not been set) or stay solid (indicating that the card has a network address assigned already).



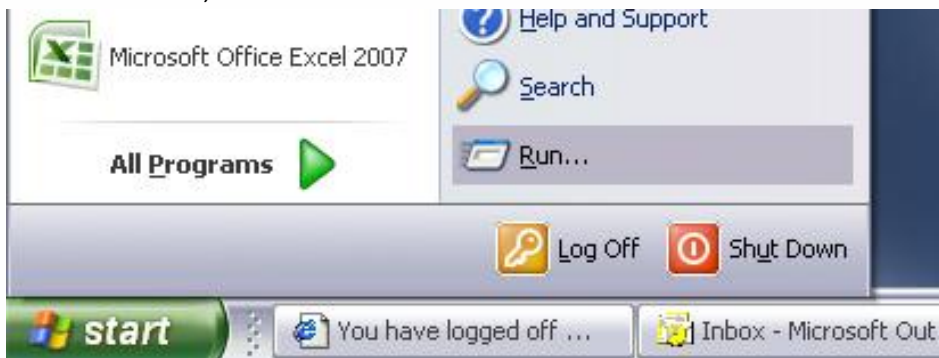
Top light shows connectivity, solid green is connected.

Orange light shows data transfer

Bottom light flashes when no IP is set and is solid when IP has been designated

Once connectivity has been established follow these instructions to configure Windows.

1. Click <Start, Run...>



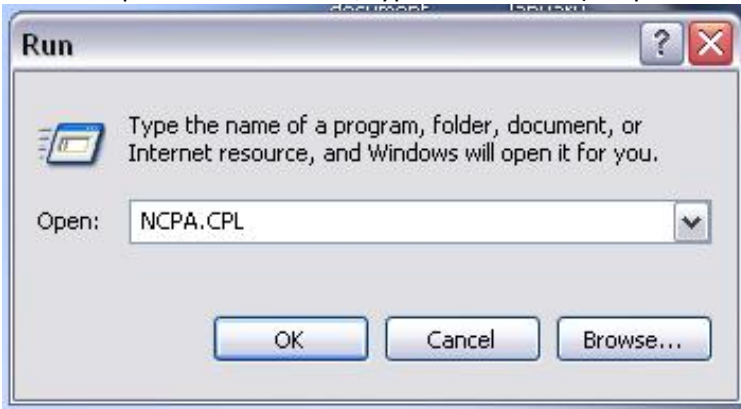
PASSPORT



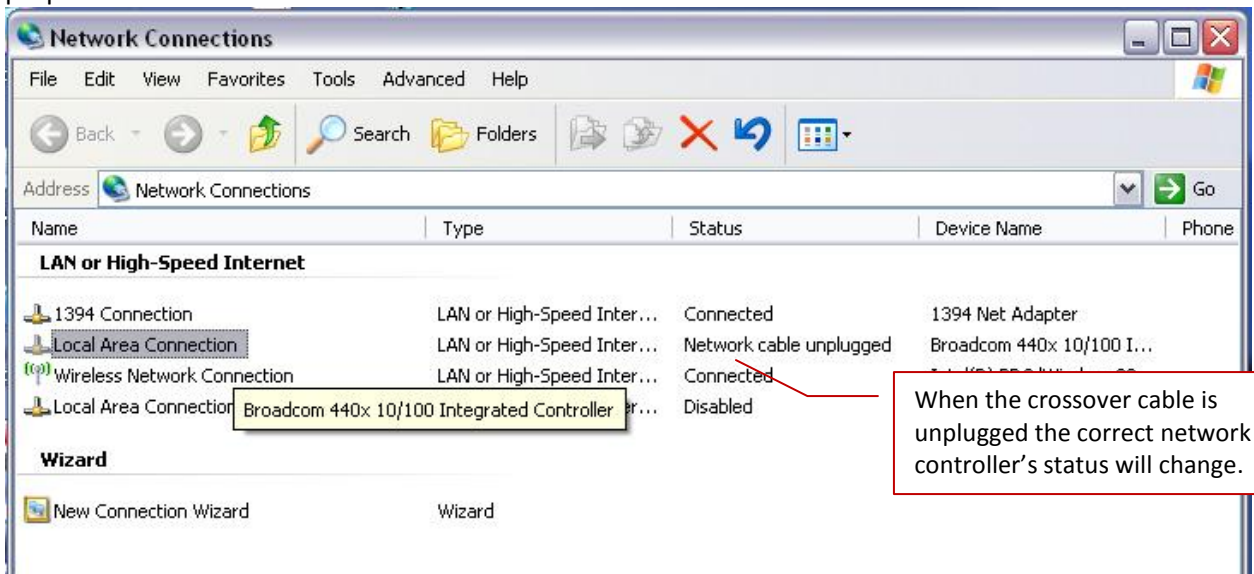
Service Bulletin

1/24/2008

2. On the "Open" command line, type "NCPA.CPL" (no quotations), then click <OK>.



3. In the "Network Connections" window, select the icon representing the network connection to the printer, and then click on <File, Properties>. If you are unsure which connection is needed, unplug the crossover cable from the computer and the status will change to Network Cable Unplugged. Be sure to plug the crossover cable back in after locating the proper connection



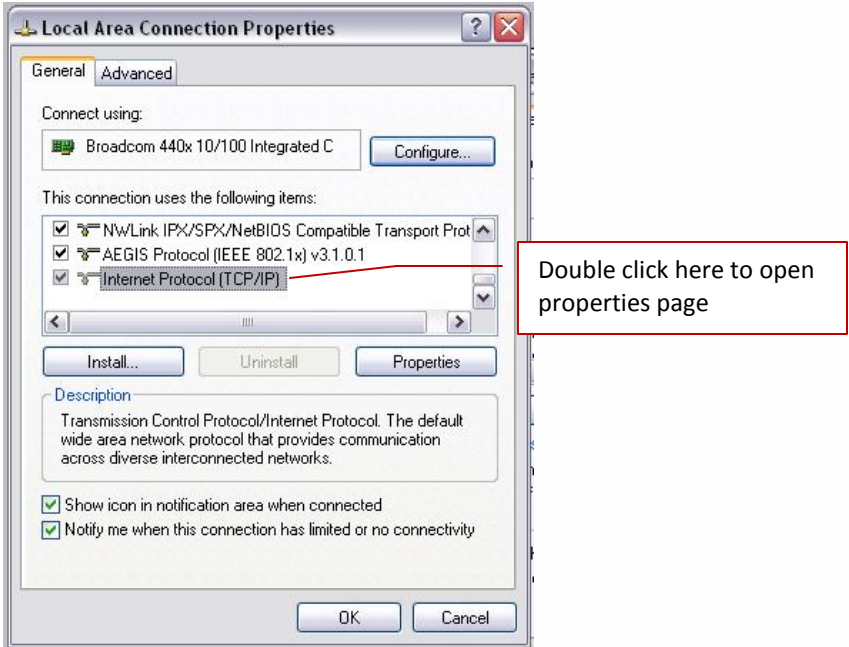
PASSPORT



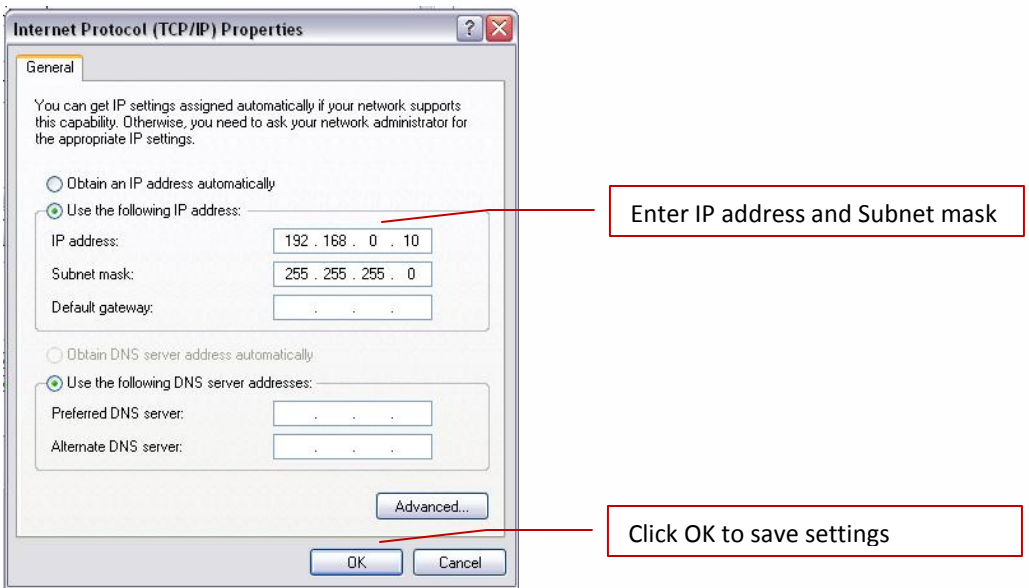
Service Bulletin

1/24/2008

4. Double click on “Internet Protocol (TCP/IP)” in the list to open the properties page.



5. Select the “Use the following IP address” option, and manually assign an IP (of your choosing) to the computer network card. Most people assign the following IP = 192.168.005.100. Use subnet mask of 255.255.255.0. However if there are multiple network cards on the computer be sure to select a range that will not conflict with the existing Network Cards.



PASSPORT



Service Bulletin

1/24/2008

6. Click <OK> to return to the previous window. Click <OK> again to save the changes.

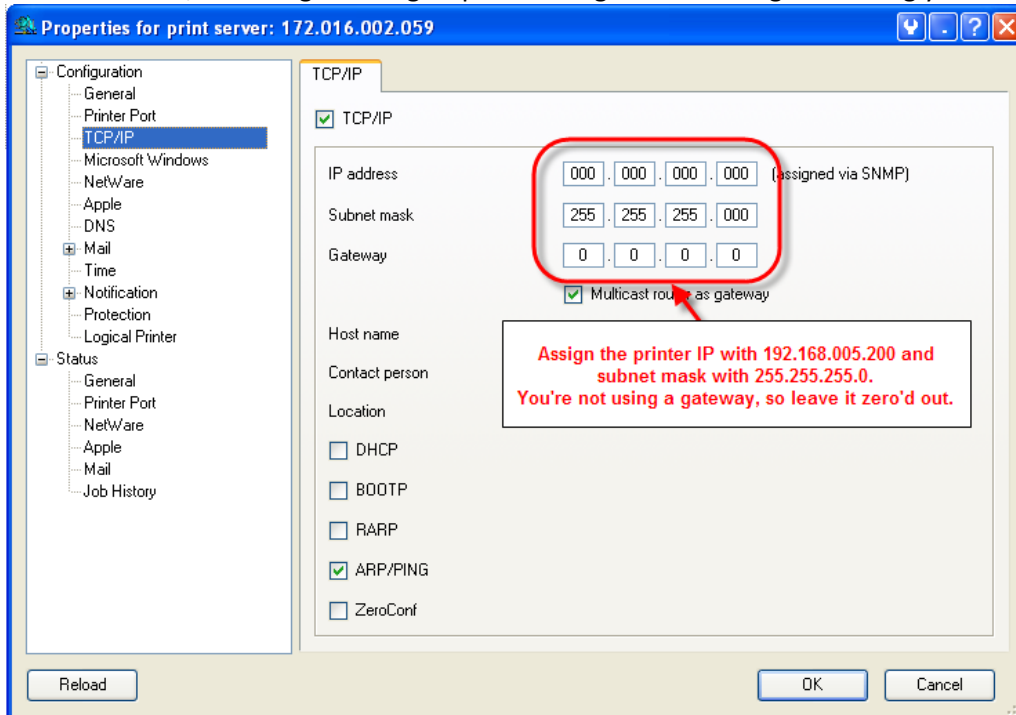
The computer network card is now configured with a manually assigned IP address. Now, you have to assign an IP address to the printer.

1. Launch the print server utility to manually assign the printer IP address. If the program is installed, it will be listed under the <Start> menu. Click on <Start, All Programs> and look for an entry referring to “Roland Print Server Nettool” or “Intercon Nettool”. Once located, launch that utility.



2. If the connect to the printer is working (cable is good and computer IP is configured properly), then the printer will be listed in the Nettool program. Double-click the printer to open properties for the print server.

Select the “TCP/IP” configuration group and configure the settings accordingly.



3. After making the settings required, click <OK> to save the settings on the printer.



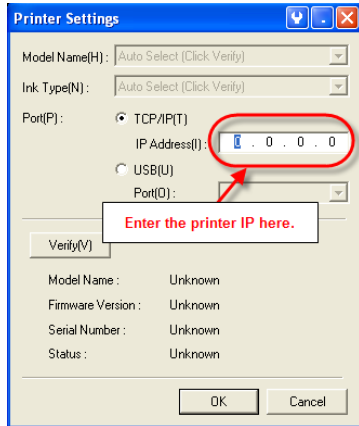
PASSPORT



Service Bulletin

1/24/2008

4. Finally, use the IP address that you just assigned to the printer to set in Versaworks. Open Versaworks, select Printer-> Printer Settings and enter in the printers IP address as shown.



5. Click verify, printer Model, Firmware, Serial Number and Status should populate in the Printer Settings window.
6. Click OK to save the settings.
7. Perform test print through Versaworks.

END DOCUMENT.

PASSPORT



Service Bulletin

1/24/2008



ROLAND DGA CORPORATION | 15363 BARRANCA PARKWAY | IRVINE, CA 92618-2201 | WWW.ROLANDDGA.COM | CERTIFIED ISO 9001:2000