

PASSPORT



Service Bulletin

2/6/2008

Bulletin No: Network_Connectivity

Model: VP/PROIII

Author: Service Team

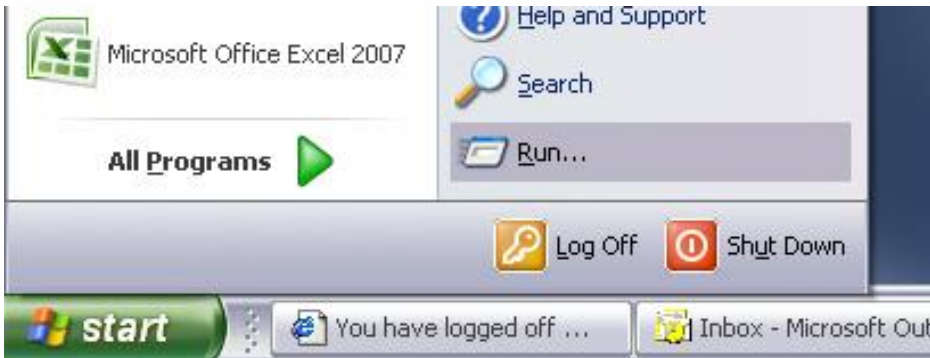
Network Connectivity

WINDOWS XP – VP & PRO III SERIES PRINTERS THAT USE VERSAWORKS HOW TO CONFIGURE THE PRINTER FOR USE WITH A CROSSOVER CABLE

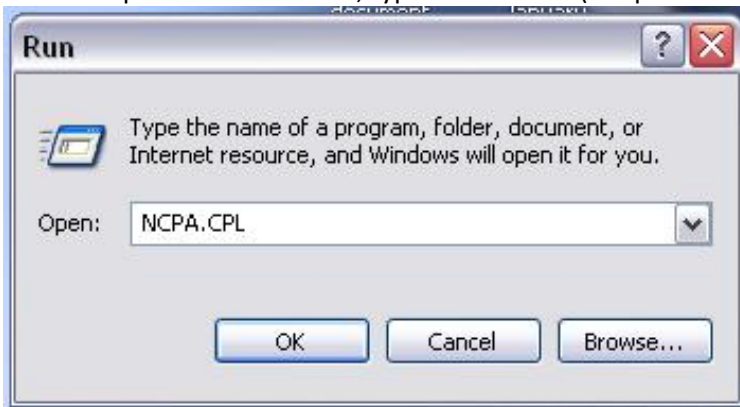
Below are instructions on how to configure the computer and printer IP addresses when using a crossover cable on Windows XP.

Once connectivity has been established via a CROSSOVER Ethernet cable follow these instructions to configure Windows.

1. Click <Start, Run...>



2. On the "Open" command line, type "NCPA.CPL" (no quotations), then click <OK>.



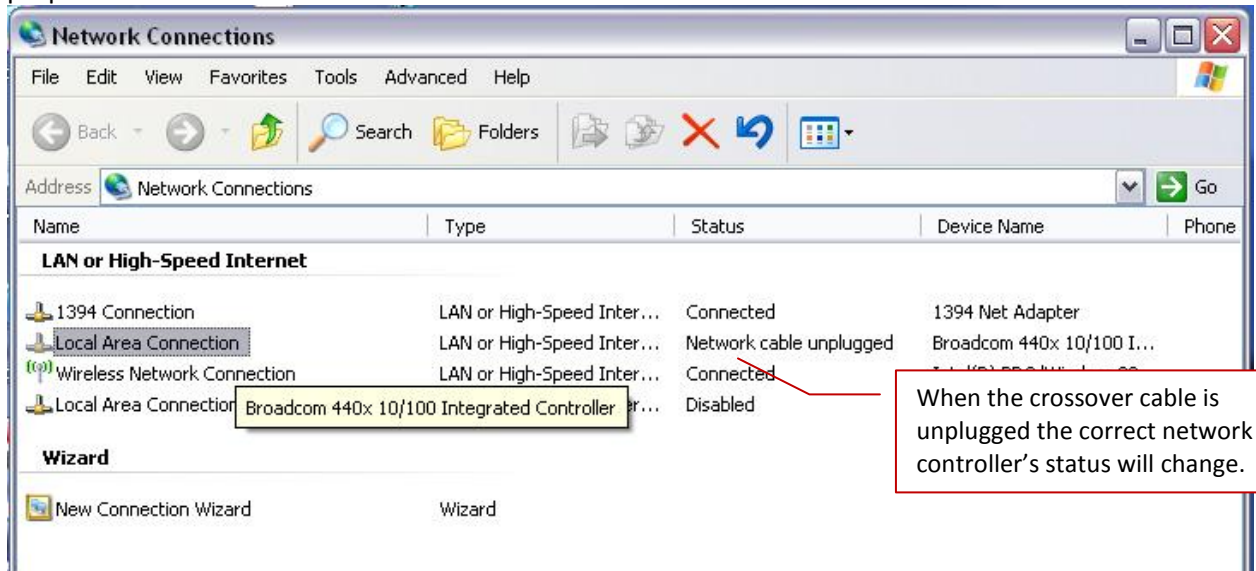
PASSPORT



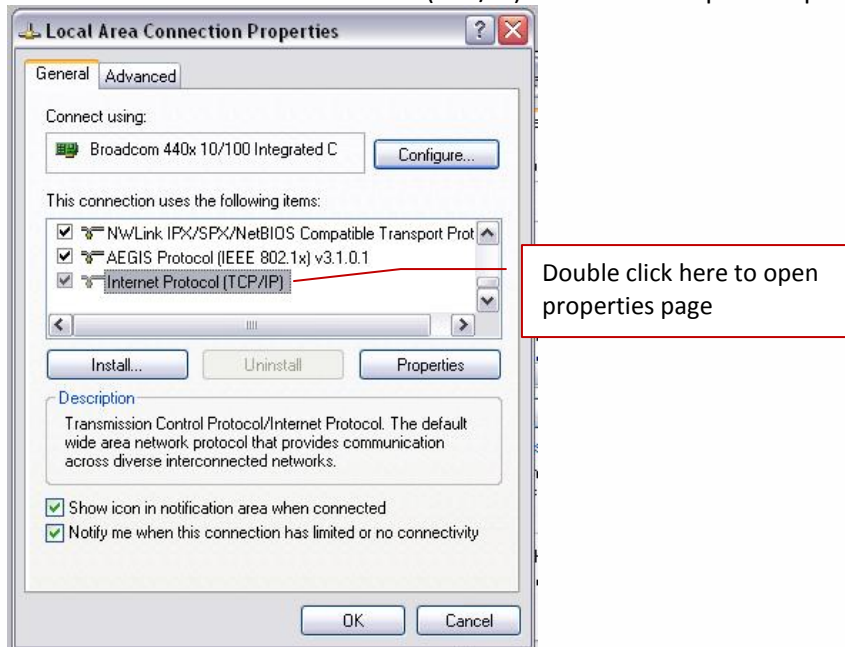
Service Bulletin

2/6/2008

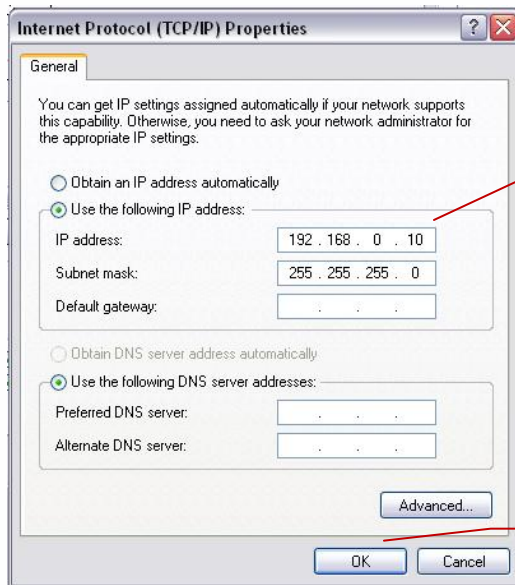
- In the “Network Connections” window, select the icon representing the network connection to the printer, and then click on <File, Properties>. If you are unsure which connection is needed, unplug the crossover cable from the computer and the status will change to Network Cable Unplugged. Be sure to plug the crossover cable back in after locating the proper connection



- Double click on “Internet Protocol (TCP/IP)” in the list to open the properties page.



5. Select the “Use the following IP address” option, and manually assign an IP (of your choosing) to the computer network card. Most people assign the following IP = 192.168.000.010. Use subnet mask of 255.255.255.0. However if there are multiple network cards on the computer be sure to select a range that will not conflict with the existing Network Cards.



Manually type in the IP address and Subnet mask in the proper locations

Click OK to save settings

6. Click <OK> to return to the previous window. Click <OK> again to save the changes.

The computer network card is now configured with a manually assigned IP address. Now, you have to assign an IP address to the printer.

PASSPORT



Service Bulletin

2/6/2008

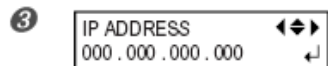
1. Set IP address on the printer using the following steps.



Press .
Press several times.

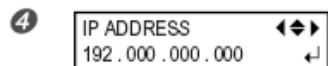


Press .
Press .

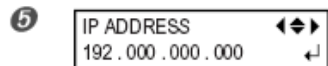


Press three times.
[IP ADDRESS]: 192.168.000.XXX

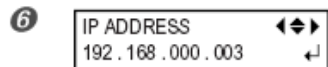
Note: Here, "XXX" may be any number you want from 2 to 254. However, be sure to specify a number that does not duplicate the setting you made in Step 1. Here, "192.168.000.003" is entered by way of example. Make the portion that corresponds to "192.168.000" the same as the setting on the computer.



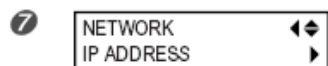
Use to select the address number.



Press .

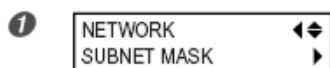


Repeat 4 and 5 to set all the address numbers.
When you've finished making the setting, press .

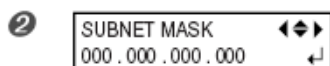


Press .
The screen shown in the figure appears.

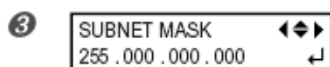
2. Set the Subnet Mask on the printer using the following steps.



Press .

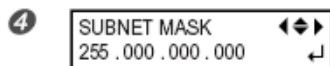


Press twice.



Use to select the address number.
[SUBNET MASK]: 255.255.255.000

Note: For the subnet mask, make the setting the same value as the one used by the computer. Here, "255.255.255.000" is entered by way of example.



Press .

Continued on next page

PASSPORT



Service Bulletin

2/6/2008

5

SUBNET MASK	◀▶
255 . 255 . 255 . 000	↵

Repeat 3 and 4 to set the subnet mask.
When you've finished making the setting, press **ENTER**.

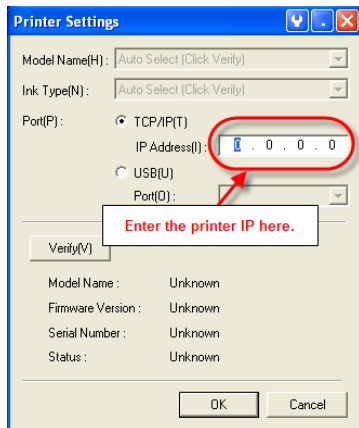
6

W 1346 mm
SETUP SHEET
▶◀ ROLL

Press **MENU**.
Press **◀** to go back to the original screen.

The printer is now ready to connect to Versaworks.

3. Finally, use the IP address that you just assigned to the printer to set in Versaworks. Open Versaworks, select Printer-> Printer Settings and enter in the printers IP address as shown. Enter IP address assigned in step 1.1 on previous page.



4. Click verify, printer Model, Firmware, Serial Number and Status should populate in the Printer Settings window.
5. Click OK to save the settings.
6. Perform test print through Versaworks.

END DOCUMENT.

