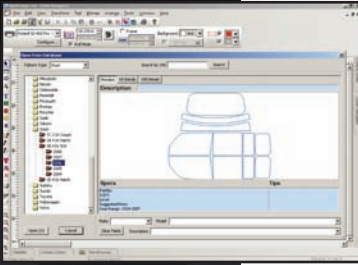
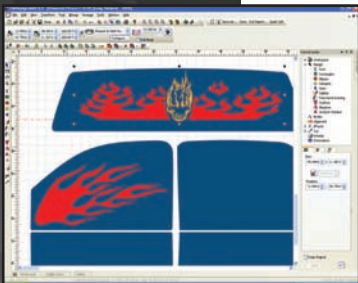


# FILM DESIGN™

Window tinting software with the power of choice



Choose from over 2,000 window film patterns



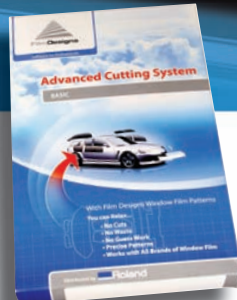
Add value with custom designs, logos and text



Accurate patterns and computerized cutting makes installation easy and fast.



Customized window tint, vinyl graphics, and more!



Complete window tinting business in a box

Roland Film Design™ is revolutionary design software that has opened up the window tinting business to auto dealerships and restyling professionals. Loaded with powerful design features, Film Design can be used with any brand of vehicle window tint film. This power of choice makes it easier than ever for you to successfully add window tinting to your business!

**Film Design Pro** provides unlimited use of more than 2,000 different window film pattern kits that cover more than 1,000 different vehicles.

**The Film Design Basic** version comes with the first 10 pattern kits, and when more kits are needed, you can purchase them in groups of 10 kits.

The software can also help you wow customers by adding custom designs, logos and text to window film patterns. And with no per-cut fee, you can feel free to re-cut window patterns over and over!

**Roland**  
Advanced Solutions Division

# Complete Roland FilmCAD Solution

## FilmDesign Software, Precision Cutter, and Your Choice of Window Film

Roland FilmDesign™ Software Features	Film Design Basic	Film Design Pro
Unlimited use of more than 2,000 different window film pattern kits included. Covers most vehicles back to 1990.		•
Access to more than 2,000 different window film pattern kits. Available for purchase in groups of ten kits, which covers most vehicles back to 1990.	•	
Compatible with all brands of window tint film.	•	•
Powerful design tools for editing patterns and designs.	•	•
Ability to add designs, logos, and text to window film patterns.	•	•
Ability to save changes on local computer.	•	•
Optional upgrade 2,000 database of urethane paint protection kits.	•	•
Unidirectional cutting and resize tool (industry first).	•	•
No per-cut fee.	•	•
Creates signs, banners, and decals.	•	•
Imports both AI and EPS files.	•	•
Supported by Roland and Roland Authorized Dealers	•	•

**System requirements: PC running Windows XP or Vista**

General Software Features:			
<b>Design</b> <ul style="list-style-type: none"> <li>• Job info</li> <li>• Measure Tool</li> <li>• Import Formats</li> <li>• PostScript / EPS Import</li> <li>• Multiple Undo</li> <li>• Tool Tips</li> </ul>	<b>Draw</b> <ul style="list-style-type: none"> <li>• Rectangle</li> <li>• Oval</li> <li>• Polygon</li> <li>• Stars</li> <li>• Arrow</li> <li>• Borders</li> </ul>	<b>View / Select</b> <ul style="list-style-type: none"> <li>• Show Fills</li> <li>• Show Bitmaps</li> <li>• Zoom Tools</li> <li>• Select Colors</li> <li>• Select Objects</li> </ul>	<b>Objects</b> <ul style="list-style-type: none"> <li>• Order</li> <li>• Align</li> <li>• Distribute</li> <li>• Sizing</li> <li>• Rotate</li> <li>• Resize Tool</li> <li>• Auto Nest</li> <li>• Multi Copies</li> <li>• Duplicate</li> </ul>
<b>Effects</b> <ul style="list-style-type: none"> <li>• Weld &amp; Trim</li> <li>• Stripe</li> <li>• Outline</li> <li>• Contour</li> <li>• Distort</li> <li>• Shadow</li> </ul>	<b>Tracing / Paths</b> <ul style="list-style-type: none"> <li>• TWAIN Scanning</li> <li>• Autotrace</li> <li>• Bitmap tracing</li> </ul>	<b>Color</b> <ul style="list-style-type: none"> <li>• Color Mixer</li> <li>• Fill/Stroke Editor</li> <li>• CMYK Support</li> <li>• Spot Color Support</li> <li>• Product Color Libraries</li> <li>• Gradients</li> <li>• Patterns</li> </ul>	<b>Cut / Plot</b> <ul style="list-style-type: none"> <li>• Film Cutting</li> <li>• Vinyl Cutting</li> <li>• Registration Marks</li> <li>• Interactive Cutter Control</li> <li>• Poll Size</li> <li>• Weed border</li> <li>• Array cutting</li> </ul>

## Roland Precision Cutters

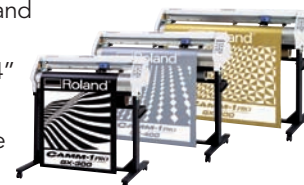
### Roland GX-24 Cutter

- Cutting material up to 20 inches per second for maximum productivity
- Mechanical resolution of 0.0005" guarantees precision results
- Perfect for cutting window film and vinyl
- Optical registration system facilitates accurate contour cutting
- USB and serial connectivity for fast and easy set up
- Width: 24"
- Optional stand available
- Optional film catch basket available



### Roland GX-PRO Cutters

- Cutting material up to 33 inches per second for maximum productivity
- Mechanical resolution of 0.0005" guarantees precision results
- Accepts a wide range of materials from paint mask and paint protection film to vinyl and window film
- Optical registration system facilitates accurate contour cutting
- USB and serial connectivity for fast and easy set up
- Available in three sizes: 36", 46", 54"
- Stand included
- Optional film catch basket available



Roland reserves the right to make changes in specifications, materials, or accessories without notice. Your actual output may vary. For optimum output quality, periodic maintenance to critical components may be required. Please contact your Roland dealer for details. No guarantee or warranty is implied other than expressly stated. Roland shall not be liable for any incidental or consequential damages, whether foreseeable or not, caused by defects in such products. All trademarks are the property of their respective owners.



Authorized Dealer:

[www.RolandASD.com](http://www.RolandASD.com)

Order genuine Roland parts & accessories at [www.RolandASDStore.com](http://www.RolandASDStore.com)