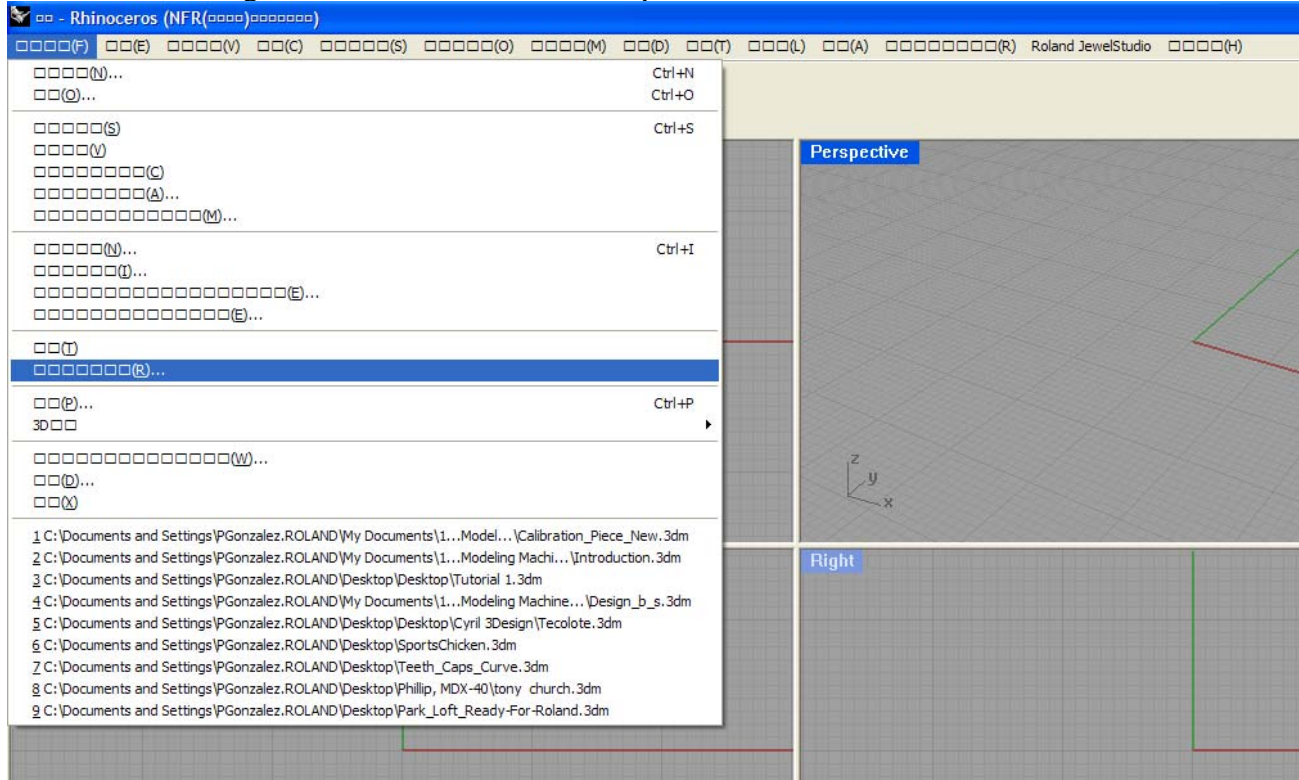


Model: Roland JWX-30  
Subject: JewelStudio Language in Standard Rhino Mode  
Author: PG

The following document demonstrates how to change Rhino when it starts in a foreign language.

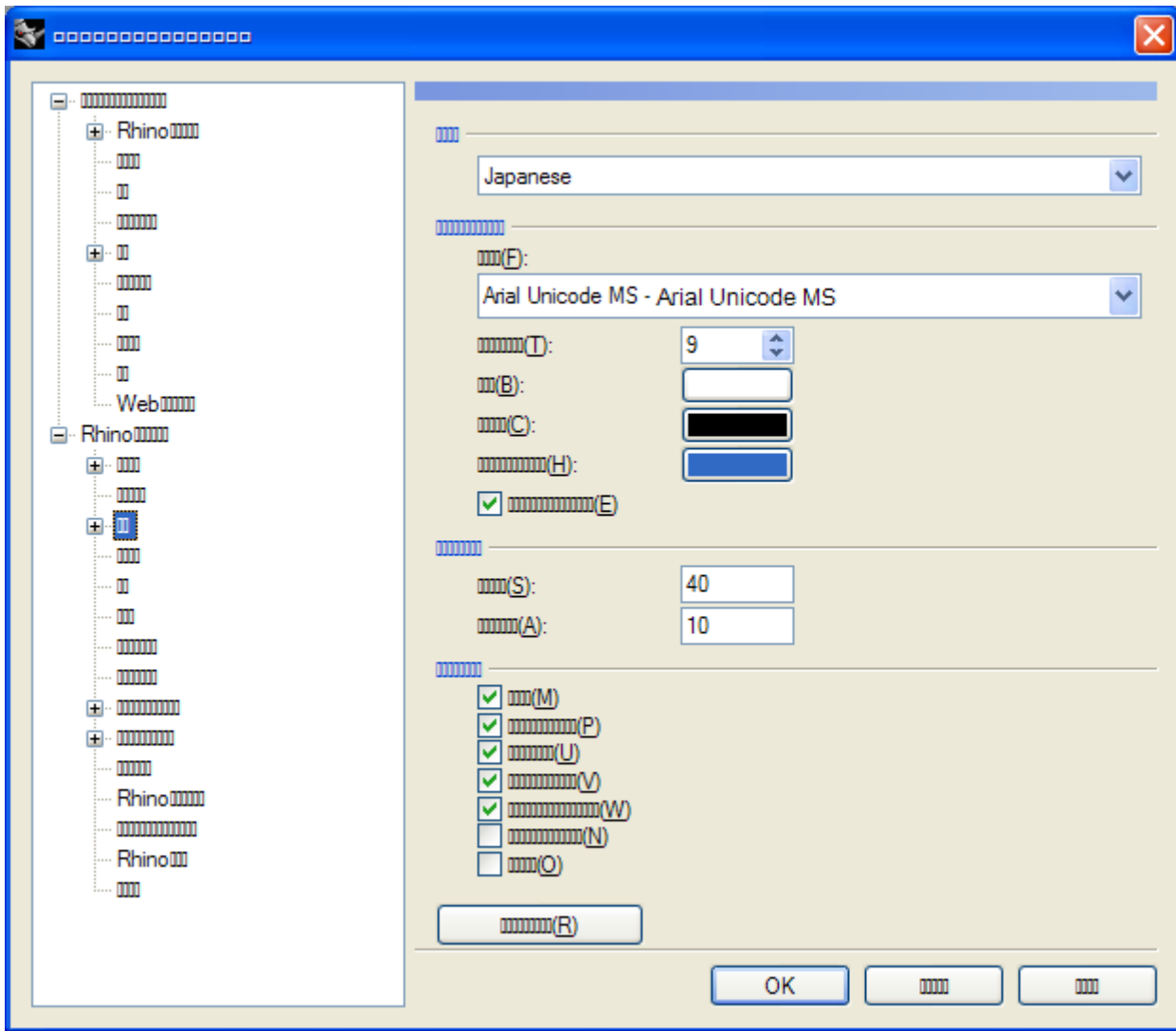
Go to the following screen and select the below option.



Model: Roland JWX-30  
Subject: JewelStudio Language in Standard Rhino Mode  
Author: PG

---

Click on the following item.

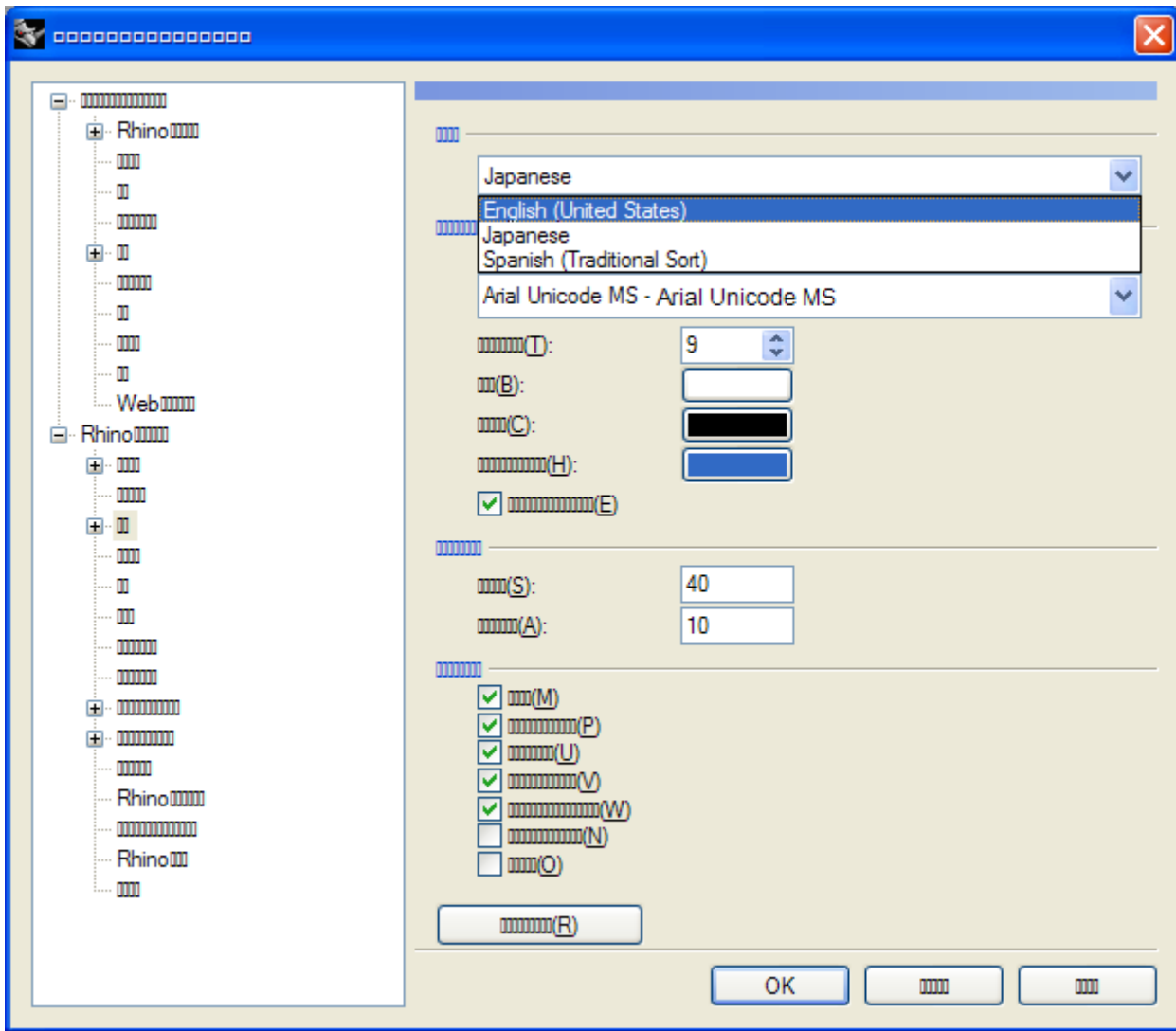




Model: Roland JWX-30  
Subject: JewelStudio Language in Standard Rhino Mode  
Author: PG

---

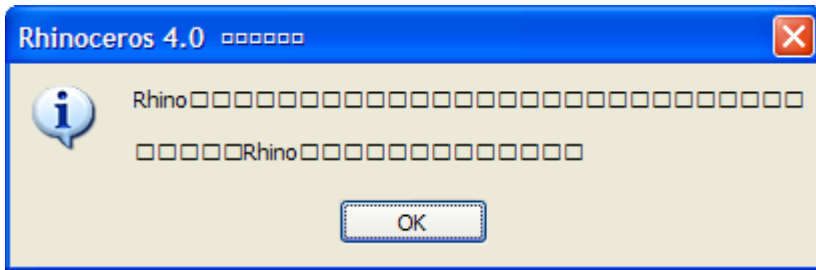
From the pull down menu, select English.



Model: Roland JWX-30  
Subject: JewelStudio Language in Standard Rhino Mode  
Author: PG

---

An error message will come up, click OK.



Restart Rhino.