

# Roland Medal Editor

## **Installation & Operation Guide**

This manual is the operation guide for “Medal Editor”. Please refer to this manual to install the software or create medal data used on the processing machine.

## **Items That May Not Be Copied**

Unauthorized reproduction of a copyrighted item for any purpose other than personal use may be a violation of copyright. Roland DG Corp. will not be responsible for any violation of third-party copyright by any article made through use of this product.

# Table of Contents

<b>Table of Contents .....</b>	<b>1</b>
<b>Getting Started .....</b>	<b>2</b>
What Is Medal Editor? .....	2
Displaying the Online Help .....	2
<b>Chapter 1 Installing and Setting Up .....</b>	<b>3</b>
1-1 System Requirements .....	4
System Requirements for Installing the Software .....	4
System Requirements for USB Connection .....	4
1-2 Overview of the Supplied Software .....	5
1-3 Installing the Software .....	6
1-4 Installing the Drivers .....	8
Windows XP .....	8
Windows 98/Me/2000 .....	10
What to Do If Installation Is Impossible .....	12
1-5 Uninstalling the Drivers .....	14
Windows XP/2000 .....	14
Windows 98/Me .....	16
1-6 Configuring Medal Editor .....	17
<b>Chapter 2 Processing .....</b>	<b>19</b>
2-1 Preparing Images .....	20
Image Suited for Processing .....	20
2-2 Names and Functions .....	21
2-3 Creating Processing Data .....	22
Loading Image Data .....	22
Specifying the Material Size .....	23
Specifying the Processing Size .....	23
Creating a 3D Image from a 2D Image (Object) .....	24
Creating a 3D Image from a 2D Image (Face) .....	29
Adding Text .....	31
Adding a Frame .....	32
Specifying the Processing Conditions .....	33
2-4 Saving Files .....	34
Saving the Edit Screen .....	34
Saving the File Management Screen .....	34
2-5 Previewing a Processing Result .....	35
2-6 Processing .....	37
Starting Processing of a Material .....	37
Canceling the Processing Operation .....	38

Windows® and Windows NT® are registered trademarks or trademarks of Microsoft® Corporation in the United States and/or other countries.  
Pentium is registered trademark of Intel Corporation in the United States.  
Other company names and product names are trademarks or registered trademarks of their respective holders.

# Getting Started

## What Is Medal Editor?

Medal Editor is software used to create 3D images from 2D images such as pictures and illustrations. You can engrave the 3D images on material using the processing machine. Also, you can add frames and text to your designs. In addition, you can simulate processing operations using the supplied software “Virtual MODELA”. You can preview the processing results and check the time required for processing. This helps to reduce lost time and wasted material.

## Displaying the Online Help

For information on how to operate the supplied software and drivers, refer to the online help.

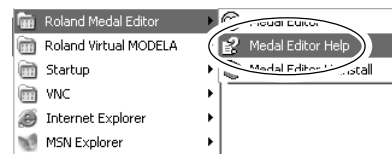
### Using the [Help] menu

From the [HELP] menu, click [Contents].




### Using the [Start] menu

From the [Start] menu, choose [All programs (or Programs)], then [Roland Medal Editor], then [Medal Editor Help].



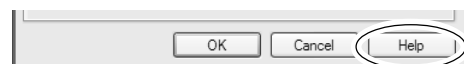
### Using the [?] button

If you click the [?] button on the upper right of the window, the mouse cursor changes to “”. Then click the term to display an explanation for the term.



### Using the [Help] button

If you click the [Help] button, you can display the help information related to the current window or software.



# ***Chapter 1***

## ***Installing and Setting Up***

---

This chapter describes installation and setup procedures for the supplied software and dedicated drivers.

# 1-1 System Requirements

## System Requirements for Installing the Software

Operating system	Windows 98/Me/2000/XP
Computer	Computer running Windows (Pentium processor or better recommended)
Drive	CD-ROM drive
Monitor	Windows-compatible monitor capable of displaying 256 colors or more (Full colors recommended)
Memory (RAM)	256 MB or more recommended
Free hard-disk space required for installation	5 MB
Interface	USB port

## System Requirements for USB Connection

Operating system	Windows 98/Me/2000/XP (Windows 95 and Windows NT4.0 are not supported.)
Computer	1) Computers preinstalled with Windows 98/Me/2000/XP at the time of purchase (This includes such computers later upgraded to Windows Me/2000/XP.) 2) Computers on which USB operation is assured by the manufacturer of computers

- The ability to make a USB connection depends on the specifications of the computer. To determine whether the computer you're using is capable of correct USB operation, check with the manufacturer of the computer.
- Use a shielded USB cable having a length of 3 meters or less. Do not use a USB hub or the like.

# 1-2 Overview of the Supplied Software

The software included in the supplied CD-ROM are as follows.

Medal Editor	Medal Editor is software to create 3D images from 2D images such as pictures and illustrations. You can add frames or text to your designs.
Virtual MODELA	Virtual MODELA is software to simulate processing operations. You can preview the processing results and check the time required for processing. This helps to reduce lost time or wasted material.
Windows driver	A USB driver and Windows drivers required for transmitting data from your computer to the machine are included.



## **Point**

For information on how to operate the supplied software, refer to the online help for each software.

☞ See "Displaying the Online Help."

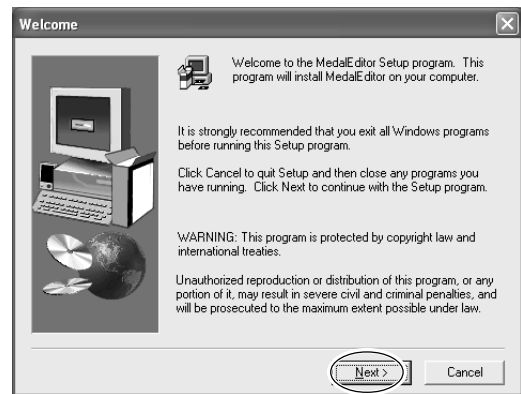
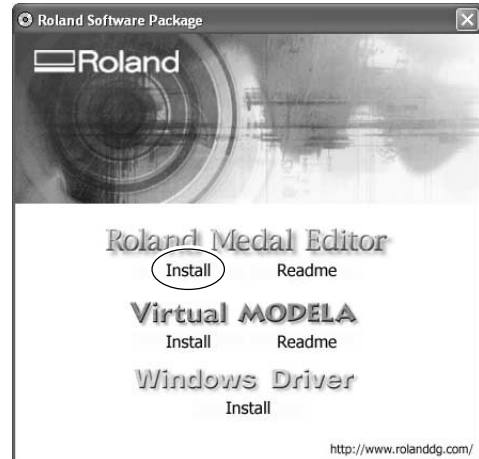
# 1-3 Installing the Software

**1** Switch on the computer and start Windows.  
If you are installing under Windows XP/2000, log on an account with "Administrators" rights.

**2** Place the included CD-ROM in the CD-ROM drive.  
The Setup menu appears automatically.

**3** Install Medal Editor.  
Click [Roland Medal Editor Install].  
The Setup program starts.

**4** Follow the messages to carry out setup and finish setting up the program.

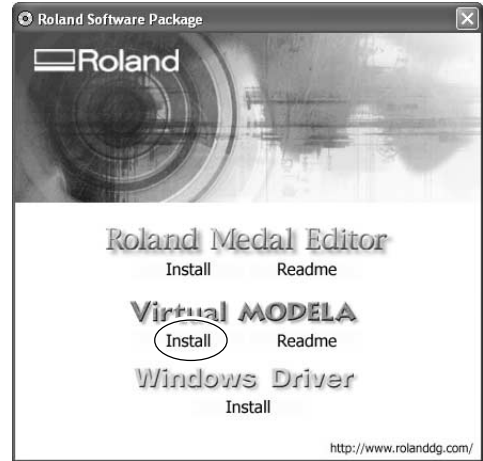




- 5** Click [OK].  
The Setup menu appears.



- 6** Continue with installing Virtual MODELA.  
Click [Virtual MODELA Install].  
The Setup menu appears.



- 7** Follow the messages to carry out setup and finish setting up the program.

# 1-4 Installing the Drivers

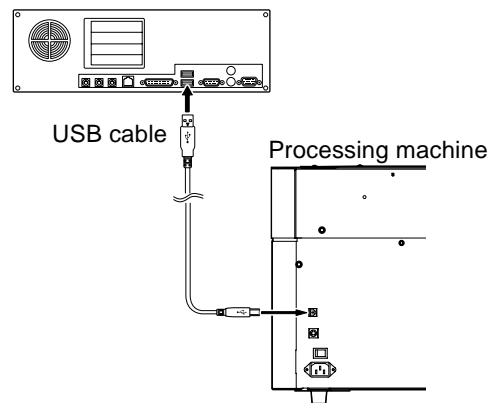
## Windows XP

### Notice

Keep the machine and the computer unconnected until you carry out this installation operation. Failure to follow the correct procedure may make installation impossible.

☞ See "1-4 Installing the Drivers" "What to Do If Installation Is Impossible."

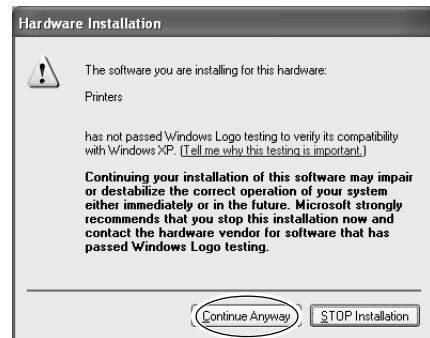
- 1** Before you start installation and setup, make sure the USB cable is not connected.
- 2** Log on to Windows with the "Administrator" account.
- 3** Place the included CD-ROM in the CD-ROM drive.  
The Setup menu appears automatically.
- 4** Turn on the processing machine.
- 5** Connect your computer to the processing machine using a USB cable.  
The [Found New Hardware Wizard] appears.



- 6** Choose [Install the software automatically (Recommended)], then click [Next].  
Installation of the USB driver starts automatically.



- 7** When the screen appears, click [Continue Anyway].



- 8** Click [Finish].  
This completes the installation.



## Windows 98/Me/2000

### Notice

Keep the machine and the computer unconnected until you carry out this installation operation. Failure to follow the correct procedure may make installation impossible.

☞ See "1-4 Installing the Drivers" "What to Do If Installation Is Impossible."

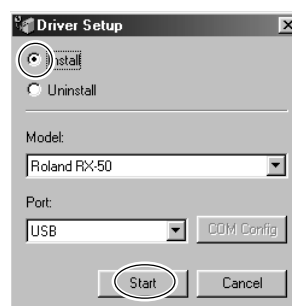
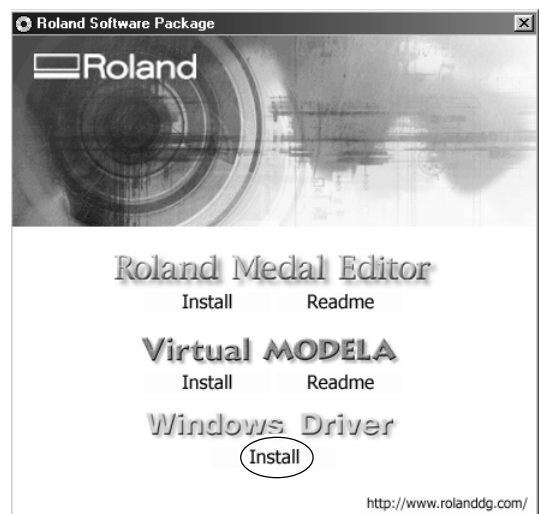
**1** Before you start installation and setup, make sure the USB cable is not connected.


**2** Log on to Windows. If you are installing under Windows 2000, log on with the "Administrator" account.

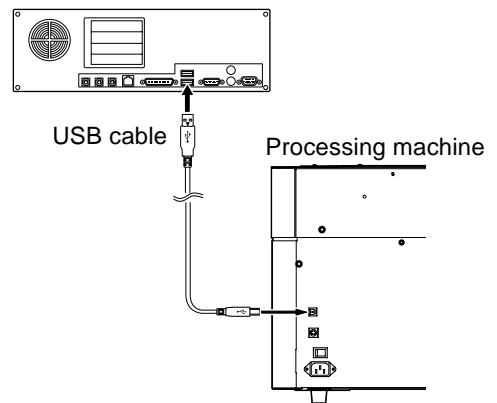
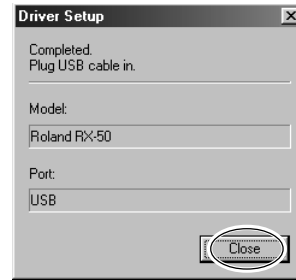
**3** Place the included CD-ROM in the CD-ROM drive.  
The Setup menu appears automatically.

**4** Click [Windows Driver Install].  
The screen shown at right appears.

**5** Select [Install]. From [Port] box, select [USB], then click [Start].  
Installation of the driver starts.



- 6 When all installation finishes, the screen shown at right appears. Click [Close].
- 7 When the setup menu for installation reappears, click .
- 8 Remove the CD-ROM from the CD-ROM drive.
- 9 Turn on the processing machine.
- 10 Connect your computer to the processing machine using a USB cable.



## What to Do If Installation Is Impossible

### Windows XP/2000

**1** If the [Found New Hardware Wizard] appears, click [Finish] to close it.

### 2 Windows XP

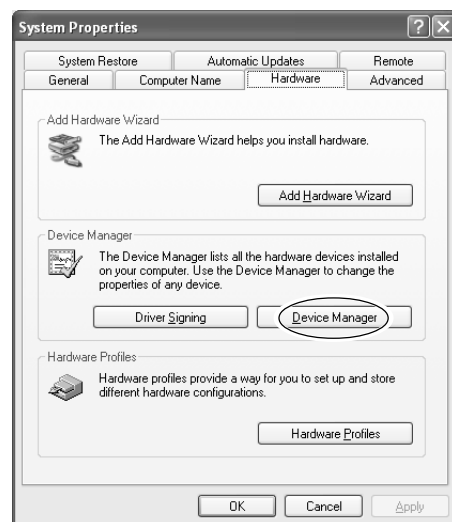
Click the [Start] menu, then right-click [My Computer]. Click [Properties].

### Windows 2000

Right-click [My Computer] on the desktop. Click [Properties].

**3** Click the [Hardware] tab, then click [Device Manager].

The [Device Manager] appears.

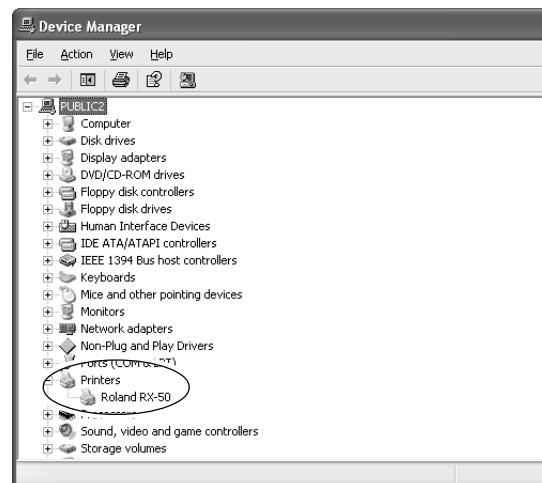


**4** At the [View] menu, click [Show hidden devices].

**5** In the list, find [Printers] or [Other devices], then double-click it.

When your processing machine or [Unknown device] appears below the item you selected, click it to choose it.

**6** Go to the [Action] menu, and click [Uninstall].



- 7** The screen shown at right appears.  
Click [OK].
- 8** Close the [Device Manager] and click [OK].
- 9** Unplug the USB cable from your computer.
- 10** Uninstalling the driver.  
Follow the procedure in "1-5 Uninstalling the Driver", step 3 and after to uninstall the driver.
- 11** Follow the procedure in "1-4 Installing the Driver" to redo installation from the beginning.



## ■ Windows 98/Me

- 1** Unplug the USB cables from your computer.
- 2** Appear the setup menu of the CD-ROM.
- 3** Uninstalling the driver.  
Follow the procedure in "1-5 Uninstalling the Driver", step 3 and after to uninstall the driver.
- 4** Follow the procedure in "1-4 Installing the Driver" to redo installation from the beginning.

# 1-5 Uninstalling the Drivers

## Windows XP/2000

When uninstalling the driver, perform following operation.

**1** Before you start uninstallation of the driver, unplug the USB cables from your computer.

**2** Log on to Windows as “Administrators” account.

### **3 Windows XP**

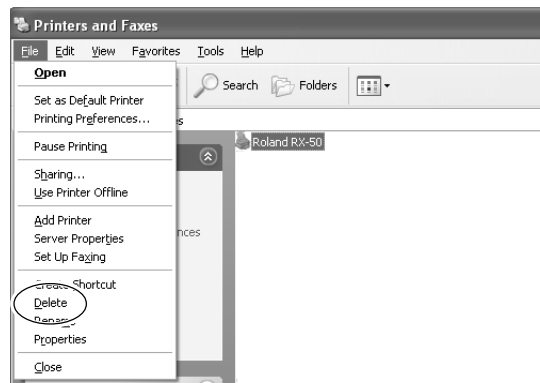
From the [Start] menu, click [Control Panel]. Click [Printers and Other Hardware], then click [Printers and Faxes].

### **Windows 2000**

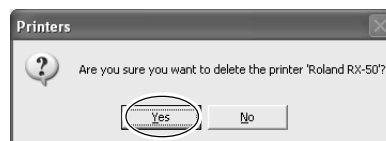
From the [Start] menu, click [Setting]. Then Click [Printers].

**4** If your processing machine appears, click the icon.

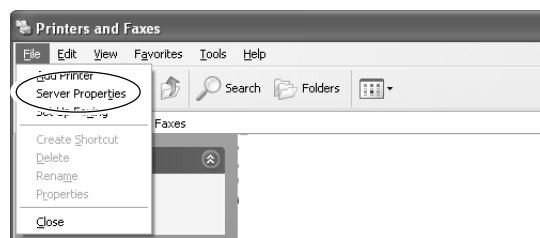
From the [File] menu, choose [Delete].



**5** When the screen prompting you to confirm deleting appears, click [Yes].

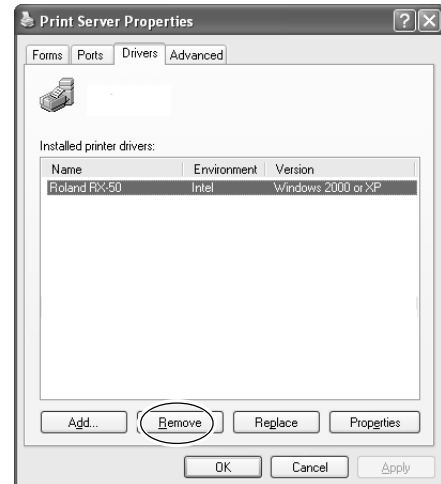


**6** From [File] menu, click [Server Properties]. The next screen appears.

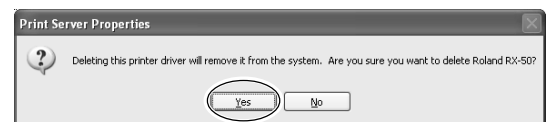




- 7** Click the [Drivers] tab.  
If your processing machine appears, choose the name from the list, then click [Remove].

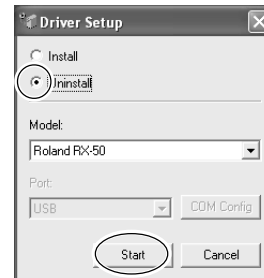


- 8** When the screen prompting you to confirm deleting appears, click [Yes].



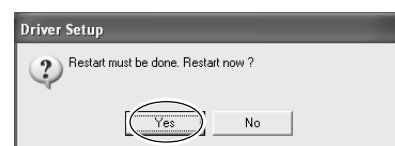
- 9** Place the included CD-ROM in the CD-ROM drive.  
The Setup menu appears automatically.

- 10** Click [Windows Driver Install].  
The screen shown at right appears.



- 11** Select [Uninstall], then click [Start].  
When driver is deleted, the next screen appears.

- 12** Click [Yes] to restart the computer.

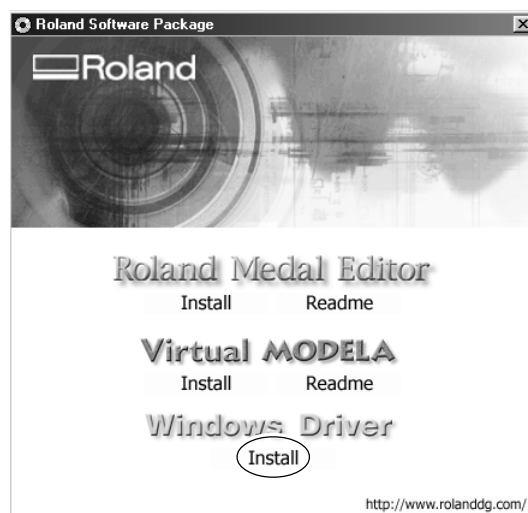


## Windows 98/Me

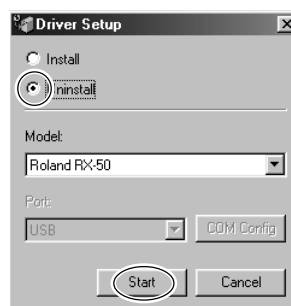
**1** Before you start uninstallation of the driver, unplug the USB cables from your computer.

**2** Place the included CD-ROM in the CD-ROM drive.  
The Setup menu appears automatically.

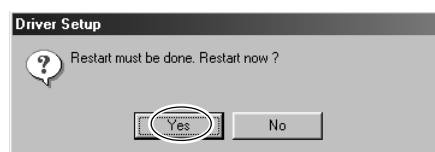
**3** Click [Windows Driver Install].  
The next screen appears.



**4** Select [Uninstall], then click [Start].  
When driver is deleted, the next screen appears.



**5** Click [Yes] to restart the computer.



# 1-6 Configuring Medal Editor

Follow the procedure below to configure a default processing machine for Medal Editor.

## 1 Starting Medal Editor

### When using Windows XP

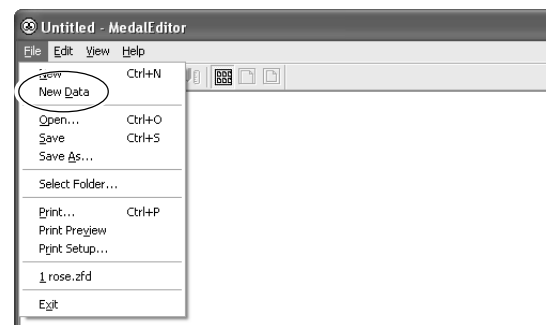
From [Start] menu, choose [All Programs], then [Roland Medal Editor], then [Medal Editor].

### When using Windows 98/Me/2000

From [Start] menu, choose [Programs], then [Roland Medal Editor], then [Medal Editor].

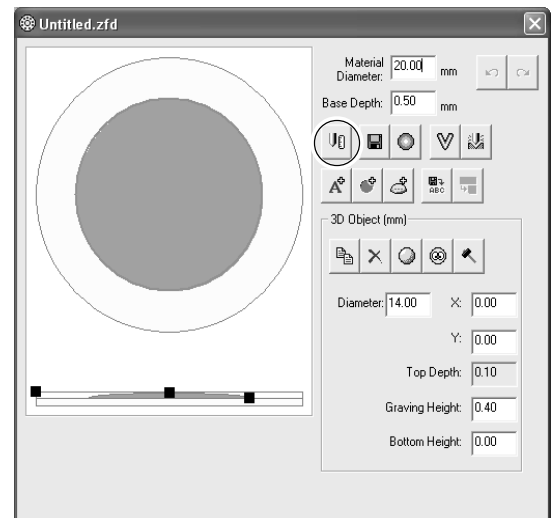
## 2 From the [File] menu, click [New Data].

The Edit screen appears.



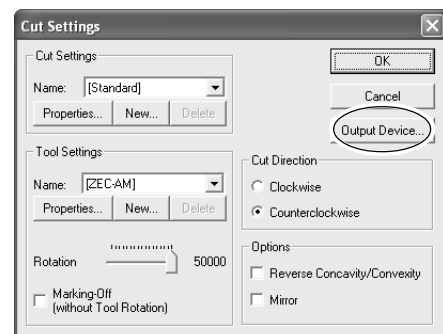
## 3 Click the [Cut Settings] button.

The [Cut Settings] dialog box appears.

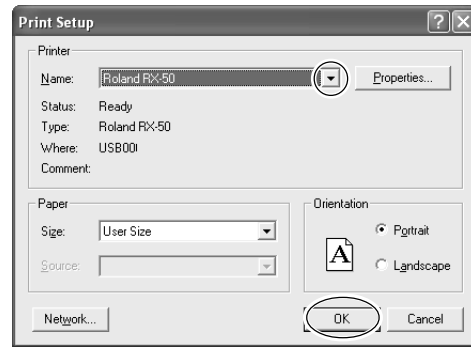


## 4 Click [Output Device].

The [Print Setup] dialog box appears.



- 5** Click [Printer Name] and select the processing machine's name, then click [OK].
  
- 6** The [Cut Settings] dialog box appears again. Click [OK] to close the [Cut Settings] dialog box.



# ***Chapter 2 Processing***

---

This chapter describes the procedure from creating modeling data to processing.

# 2-1 Preparing Images

## Image Suited for Processing

Prepare images (pictures and illustrations) to use as a processing design. We recommend using images that meet the following conditions.

### Portrait

- No shading on the face  
(Lit from the front with no shading around the nose and eyes is best.)
- Front view
- Close up of face if using only the face  
(Using a face from a full-length photograph may cause rough processing due to low resolution.)
- Background with uniform color

### Objects other than portraits

- Solid color division (Illustrations or logos with few color gradations)
- Background with uniform color

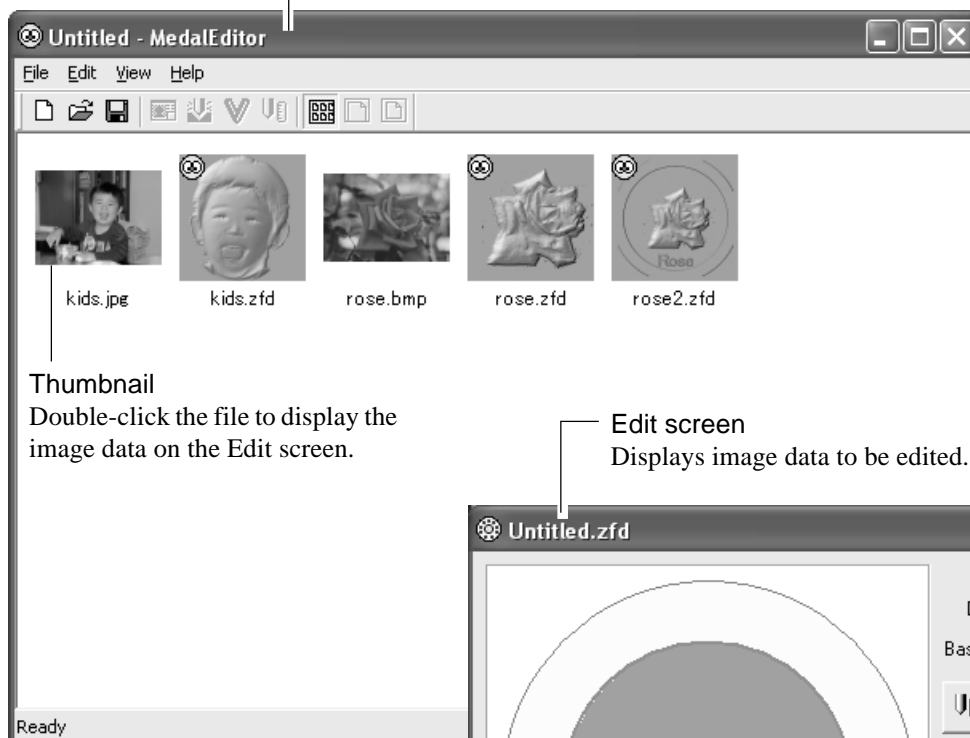
### File format

- BMP file
- JPEG file

## 2-2 Names and Functions

File management screen

Displays the thumbnail list of the edited medal data and image data. You can preview multiple data on this screen.

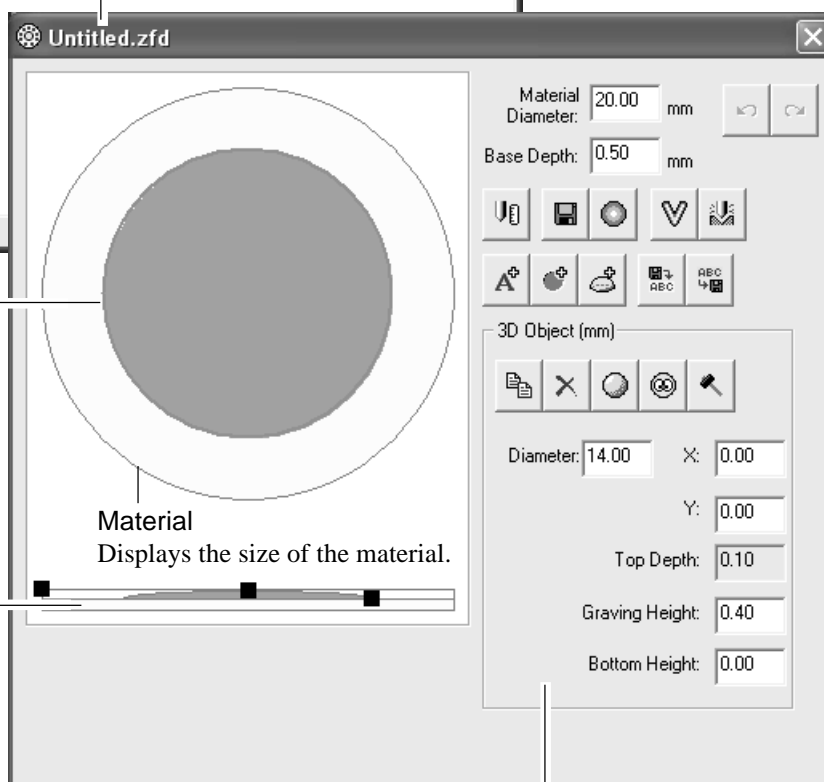


Thumbnail

Double-click the file to display the image data on the Edit screen.

Edit screen

Displays image data to be edited.



Layout (top view)

Displays the layout of the 3D image, text, and frames.

Material

Displays the size of the material.

Layout (side view)

Displays the conceptual diagram of the height.

Object settings

Displays item properties (3D Object, Text Object, or Frame Object), including settings or operating buttons, selected on the Edit screen.

When click 3D image : 3D Object appears.

When click text : Text Object appears.

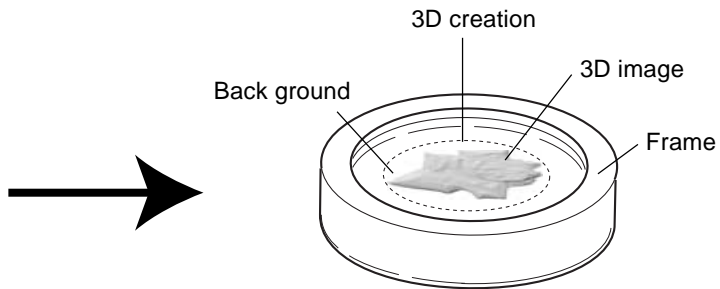
When click frame : Frame Object appears.

When selecting a material or other area, properties do not appear.

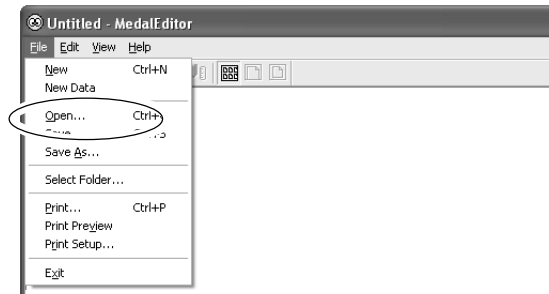
# 2-3 Creating Processing Data

## Loading Image Data

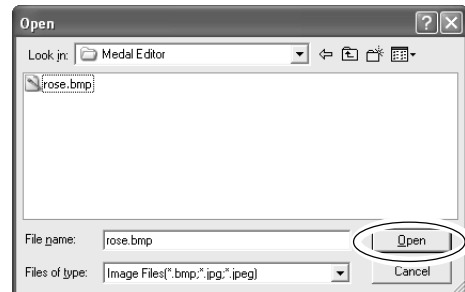
We use the following image data as an example to create processing data.



- 1 From the [File] menu, click [Open].  
The [Open] dialog box appears.



- 2 Select the image file you want to use and click [Open].  
The selected image is loaded and appears on the Edit screen.



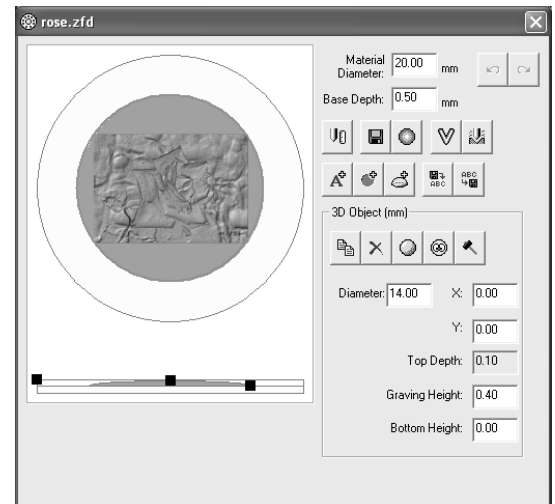
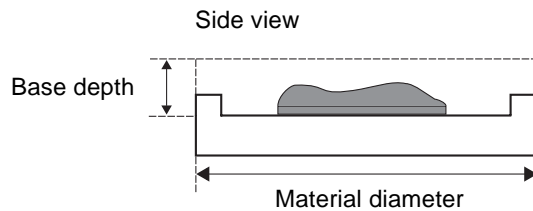


## Specifying the Material Size

Input the size of the material set on the vise.

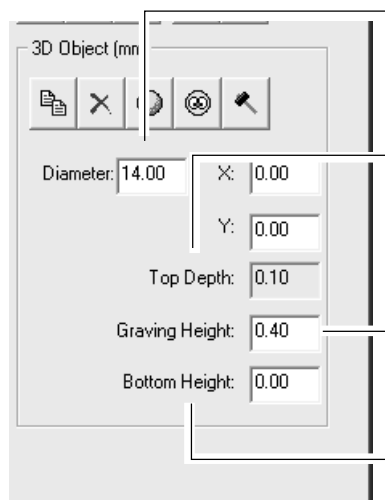
In the [Material Diameter] field, input the diameter of the material.

In the [Base Depth] field, input the processing depth.



## Specifying the Processing Size

Input the size of the processing size.



### Diameter

Displays the diameter of the 3D image surrounded with circle.

### Top depth

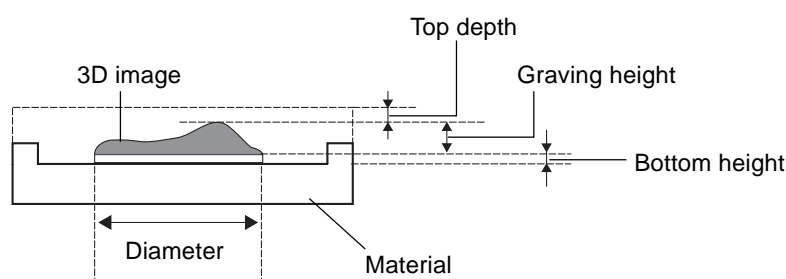
Displays the depth from the top surface of the material to the highest processing level of the 3D image.

### Graving height

Displays the processing height of the 3D image.

### Bottom height

Displays the height of the push-up bottom of the 3D image. When you start processing the lowest level, input the value "0".

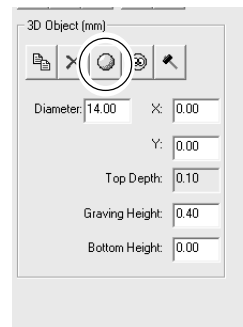


## Creating a 3D Image from a 2D Image (Object)

Create the 3D image by using [Create 3D (Object) ].

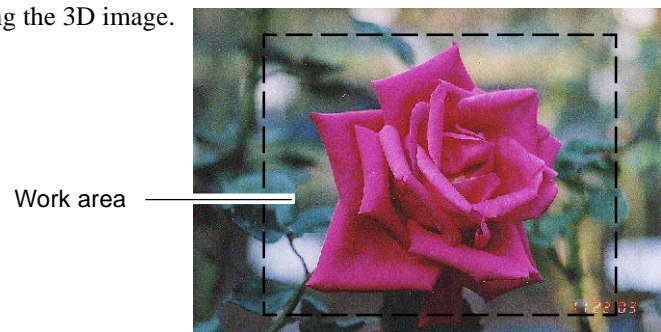
Click the [Create 3D (Object)] button.

The Work Area screen appears.



### Specifying a work area

Specify the area from the original image to use for creating the 3D image.



**1** Drag the mouse over the screen to specify the work area.

**2** Click [Next].  
The 3D Creation Area screen appears.

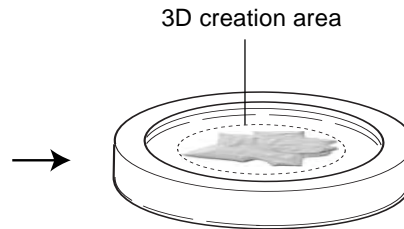


## Specifying a 3D creation area

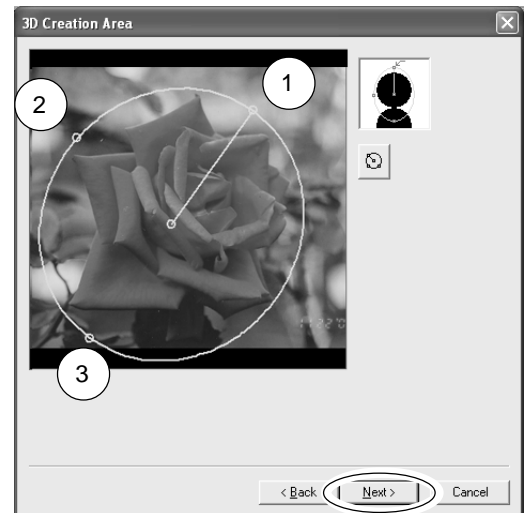
Specify the area to use for creating the 3D image as a relief.



3D creation area

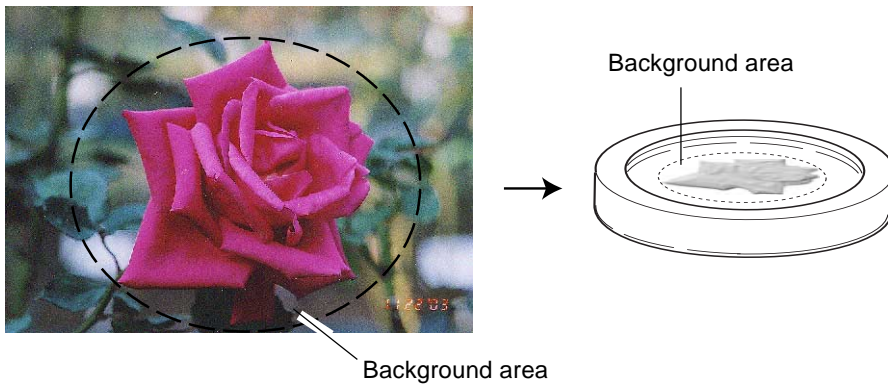



- 1** Click the point 1, 2, 3 shown in the illustration.
- 2** Click [Next].  
The Background Area screen appears.

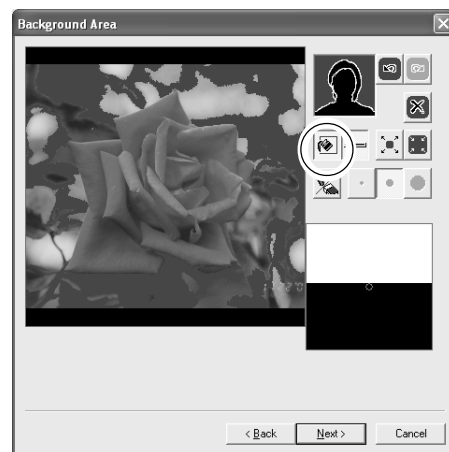


## Specifying a background area

Specify the detailed area to use for creating the 3D image. The area specified as the background is not used.




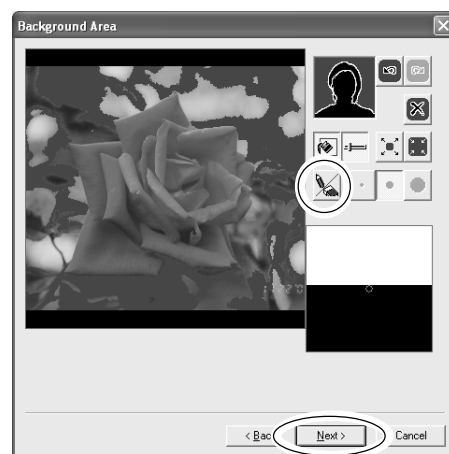
- 1 Click the  button and click the part of the image to specify as a background area. The clicked part is filled and the Filled Area dialog box appears.



- 2 Use the slide bar or [Wide]/[Narrow] buttons to adjust the size of the filled area to be specified as the background. The filled area appears on the screen.



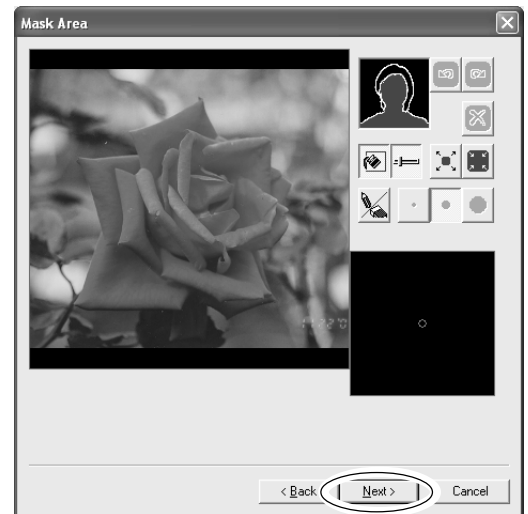
- 3 Use [Pen tool] to fill detailed areas. Click  and drag the cursor over the area to be specified as the background.
- 4 Click [Next]. The Mask Area screen appears.



## Specifying a mask area

When converting an image to 3D, specify the black area is raised or lowered. By specifying a mask area, the black area are lowered.

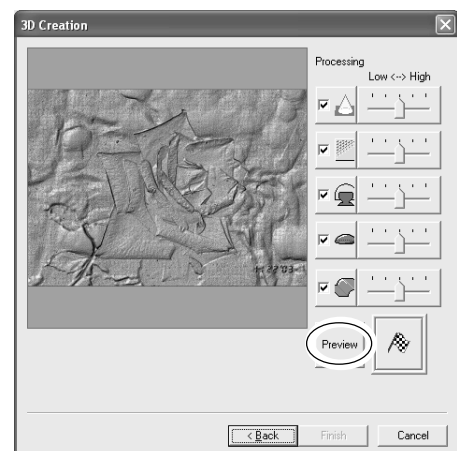
You do not need to specify them here.  
Click [Next].  
The 3D Creation screen appears.



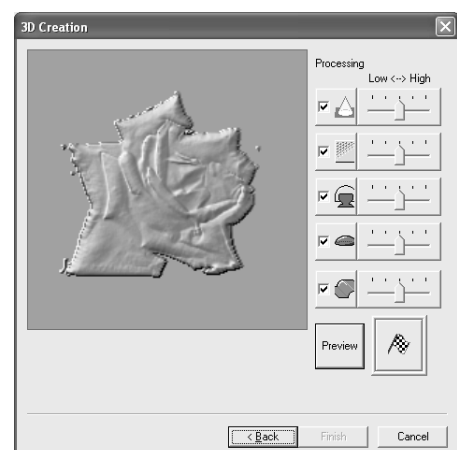
## Converting a 2D image to a 3D image

Follow the procedure below to convert an edited 2D image to a 3D image.

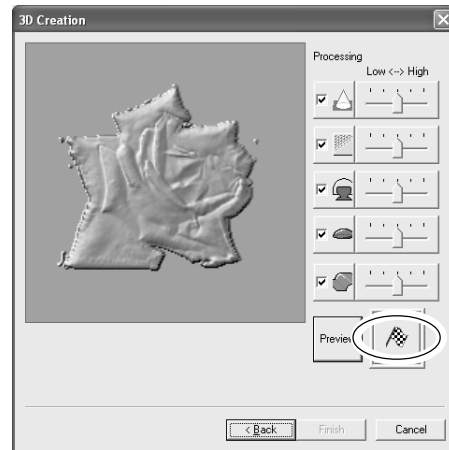
- 1 Click the [Preview] button.  
The simulated 3D image appears on the screen.



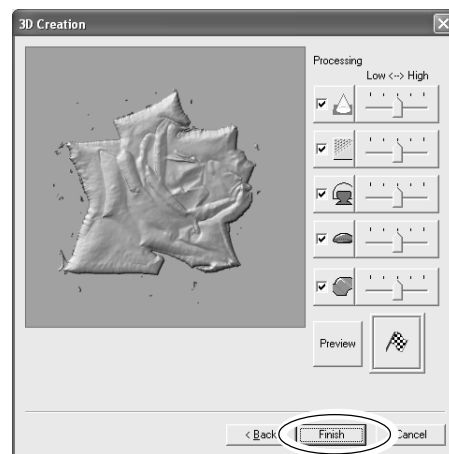
- 2 Check the simulated 3D image. Drag the slide bar to the left/right to adjust each processing parameter.  
To preview the adjusted image, click the [Preview] button.



- 3 Click the [Execute] button.  
Data processing starts and the created 3D image appears.



- 4 Click [Finish].  
The Edit screen appears.



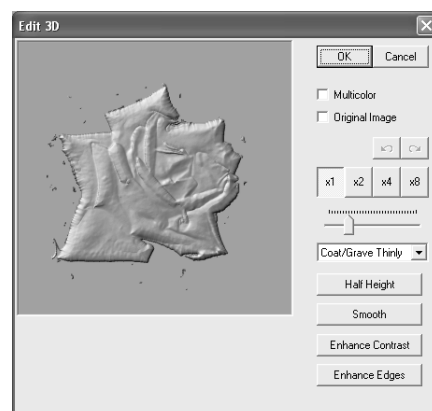
### Point

#### Adjust the 3D image

If you want to adjust the 3D image, click the button shown in the illustration.

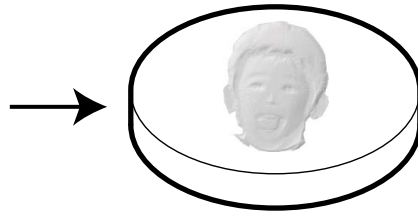
The [Edit 3D] dialog box appears.

Use the configuration buttons or brush to adjust the 3D image in detail.



## Creating a 3D Image from a 2D Image (Face)

When creating a 3D facial image, you can specify nose and eye locations and a facial outline.



### Point

For information on creating a 3D image from a 2D image (face), refer to the online help.

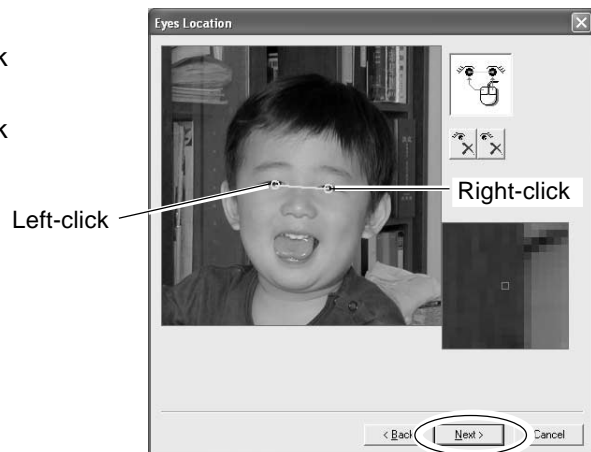
Loading image data of face.

Follow the procedure "Creating a 3D Image from a 2D Image (Object)", specify a work area and 3D creation area.

### Specifying eye locations

- 1 Specify eye locations.  
Move the cursor to the right eye and left-click over the eye.  
Move the cursor to the left eye and right-click over the eye.

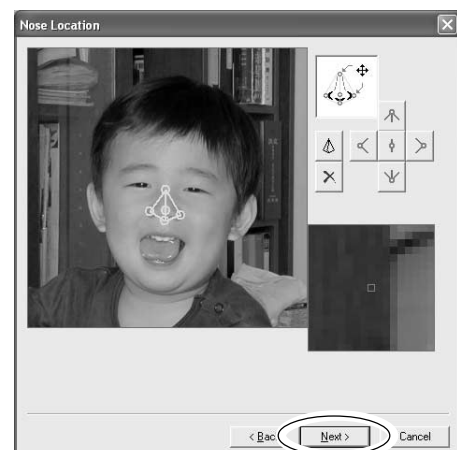
- 2 Click [Next].  
The Nose Location screen appears.



### Specifying nose location

- 1 The location of the nose is detected automatically.  
Drag the [○] marks on the screen to adjust the location and size.

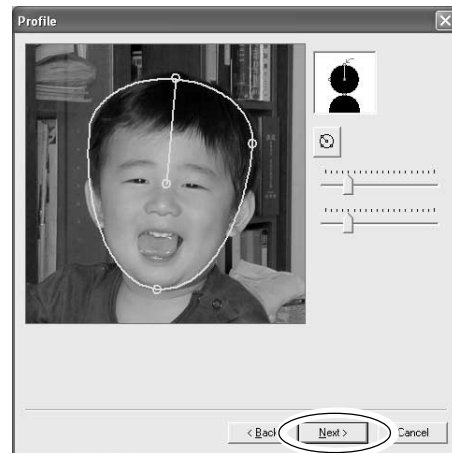
- 2 Click [Next].  
The Outline screen appears.



### Specifying a facial outline

---

- 1** The facial outline is detected automatically.  
Drag the [○] marks and drag the slide bar to the left/right on the screen to adjust the location and size.
- 2** Click [Next].  
The Background Area appears.

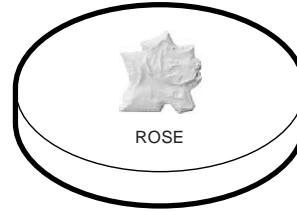


Follow the procedure "Creating a 3D Image from a 2D Image (Object)", specify a background area and mask area to create 3D image.

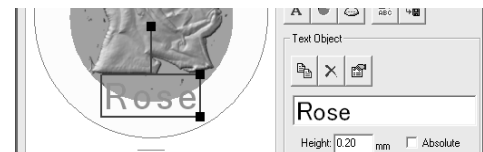
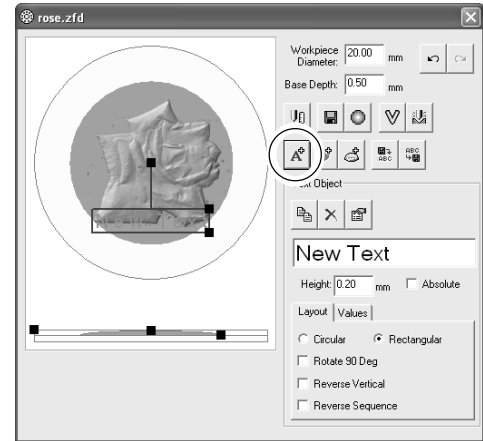


## Adding Text

Follow the procedure below to add text to the 3D image.

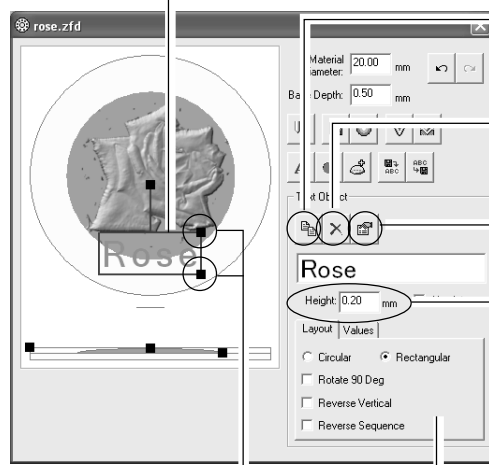


- 1 Click the [Add Text] button.  
The [Add Text] dialog box appears.
- 2 Type the text you want to add in the [New Text] field.  
In this procedure, the text "Rose" is used as an example.  
The text you entered appears on the screen.



### Changing the text alignment and font settings

To change the text location  
Move and rotate the text by dragging it up, down, or to the left or right.



To change the font size  
Drag the [■] marks on the screen to adjust the size of the text

To change layout  
You can change layout of text.

To duplicate text  
You can duplicate text.

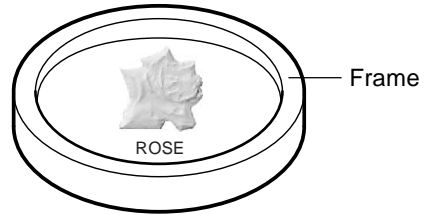
To delete text  
You can delete text.

To change font settings  
The [Text Settings] dialog box appears. You can change the font style and size.

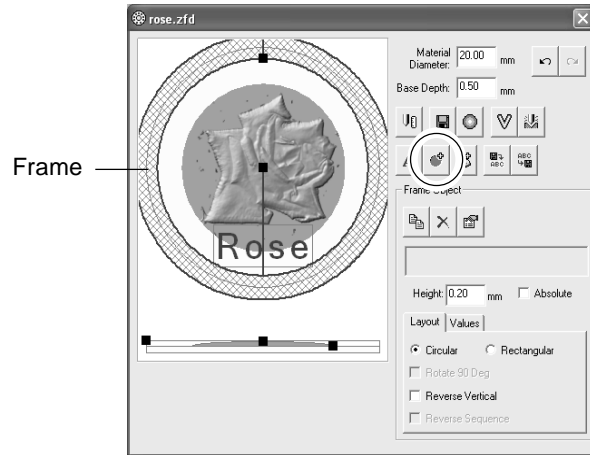
To change the text height  
Input a value to specify the height of the text.

## Adding a Frame

Follow the procedure below to add a frame around an image.



Click the [Add Frame] button.  
The new frame appears on the screen.



## Changing the frame alignment and shape

To change the frame width  
Drag the [■] marks on the screen to adjust the width of the frame.

To change the frame location  
Move and rotate the frame by dragging it up, down, or to the left or right.

To duplicate frame  
You can duplicate frame.

To delete frame  
You can delete frame.

To change the frame shape  
The [Properties] dialog box appears.  
You can change the frame shape.

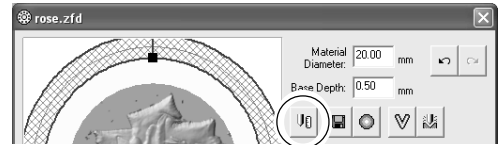
To change the frame height  
Input a value to specify the height of the frame.

To change layout  
You can change layout of the frame shape

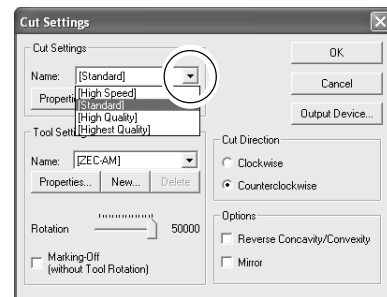
## Specifying the Processing Conditions

Specify the processing conditions.

- 1 Click the [Cut Settings] button.  
The [Cut Settings] dialog box appears.

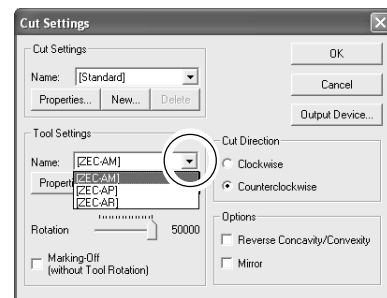


- 2 Click [▼] and select the cut settings.

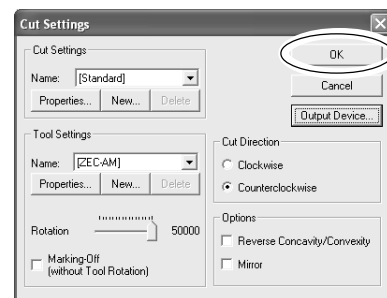


- 3 Click [▼] and select the cutter installing the processing machine.

- 4 Set the rotation [50000] here.  
When processing soft material, lowered rotation.



- 5 Click [OK] to close the [Cut Settings] dialog box.  
The edit screen appears.

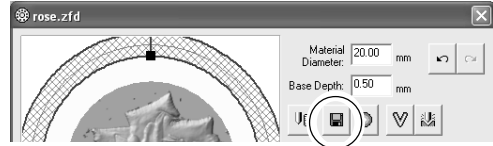


# 2-4 Saving Files

## Saving the Edit Screen

Save the 3D image data.

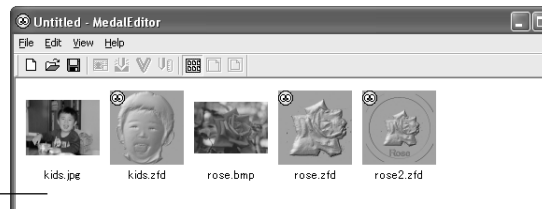
- 1 Click the [Save As] button.  
The [Save As] dialog box appears.
- 2 Specify a location to save the image file in and type the file name.
- 3 Click [Save]  
The 3D image data appears on the File management screen.



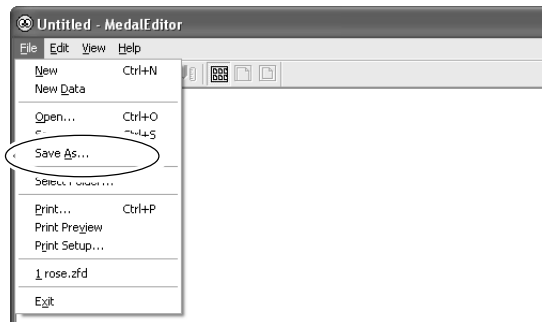
## Saving the File Management Screen

You can save 3D image data and image data on this screen.

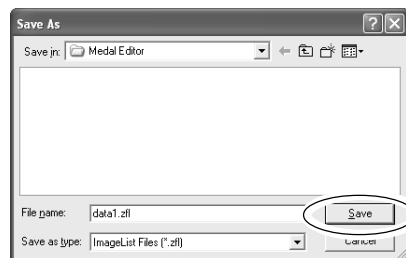
File management screen



- 1 From the [File] menu, click [Save As].  
The [Save As File] dialog box appears.



- 2 Specify a location to save the list file in and type the file name.
- 3 Click [Save].



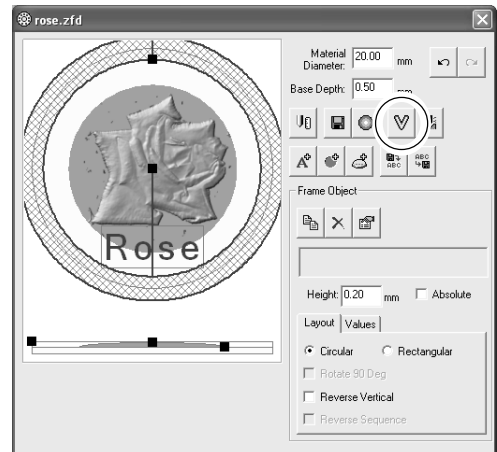
## 2-5 Previewing a Processing Result

With Virtual MODELA, preview processing results before starting an actual processing operation.

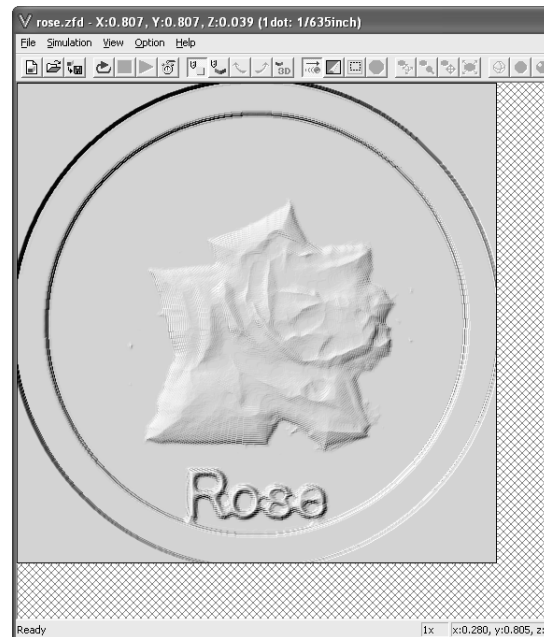
- 1 Select the edited medal data, and double click.  
The Edit screen appears.



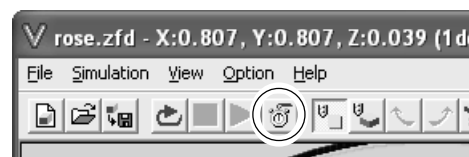
- 2 Click the button.  
Virtual MODELA starts up and the Simulation screen appears.



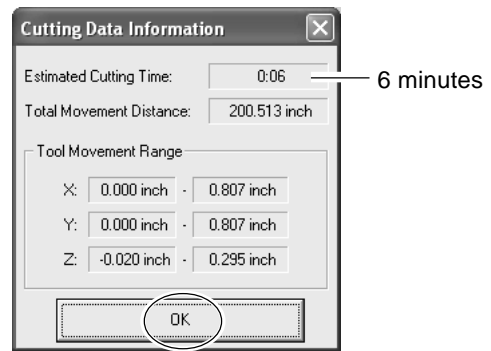
- 3 The Virtual MODELA automatically simulates the action of the cutter and displays the processing result on the screen.



- 4 Click the button.  
The [Cutting Data Information] dialog box appears.



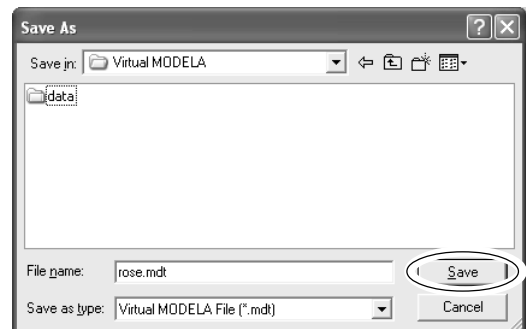
- 5** Check the expected processing time, then click [OK].




- 6** When save the simulation data, from the [File] menu, select [Save Cutting Configuration].



- 7** Select the folder for saving the file, enter the file name.  
Click [Save].



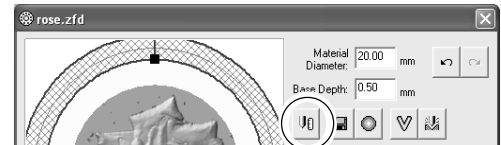
- 8** Click , and close Virtual MODELA.  
The Edit screen of Medal Editor appears.

# 2-6 Processing

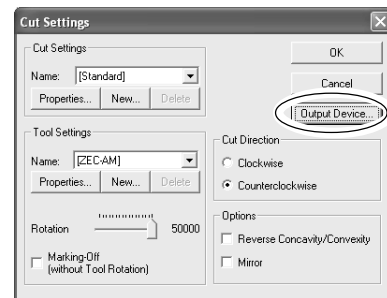
## Starting Processing of a Material

**1** Check that the material and cutter are properly installed to the processing machine.

**2** Click the [Cut Settings] button.  
The [Cut Settings] dialog box appears.

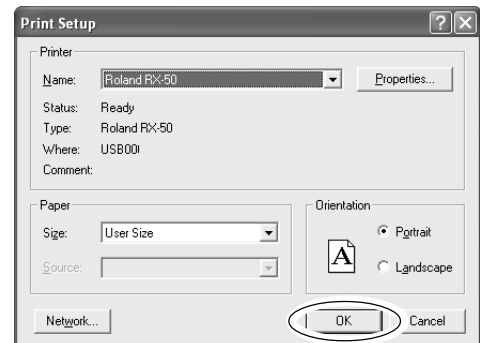


**3** Click [Output Device].  
The [Print Setup] dialog box appears.

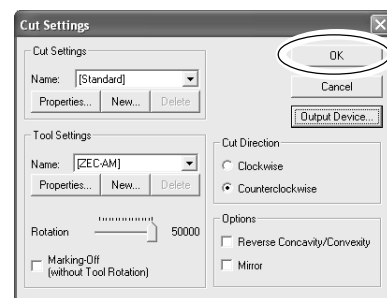


**4** Check that the processing machine name you want to use appears in the [Name] field.

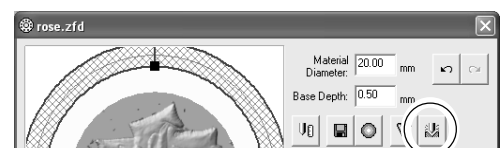
**5** Click [OK], and close the [Printer Settings] dialog box.  
The [Cut Settings] dialog box appears.



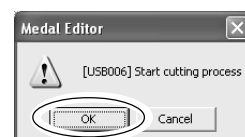
**6** Click [OK], and close the [Cut Settings] dialog box.  
The Edit screen appears.



**7** Click the [Cut] button.  
The confirmation screen appears.



**8** Click [OK].  
The processing machine is activated and starts to process.

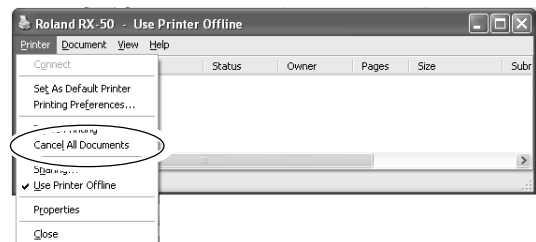


## Canceling the Processing Operation

- 1 Stop the processing operation temporarily.
  
- 2 **Windows XP**  
Click [Start]-[Control Panel] and then click [Printers and Other Hardware]- [Printers and Faxes].  
  
**Windows 98/Me/2000**  
Click [Start].  
Point to [Settings] and click [Printers].
  
- 3 Double-click the processing machine icon.



- 4 **Windows XP/2000**  
From the [Printer] menu, click [Cancel All Documents].  
  
**Windows 98/Me**  
From the [Printer] menu, click [Purge Print Jobs] or [Purge Print Documents] to stop sending data.
  
- 5 Delete the processing data from the processing machine.











## Please read this agreement carefully before opening the sealed package or the sealed disk package

Opening the sealed package or sealed disk package implies your acceptance of the terms and conditions of this agreement.

### Roland License Agreement

Roland DG Corporation ("Roland") grants you a non-assignable and non-exclusive right to use the COMPUTER PROGRAMS in this package ("Software") under this agreement with the following terms and conditions.

- 1. Coming into Force**                      This agreement comes into force when you purchase and open the sealed package or sealed disk package.  
The effective date of this agreement is the date when you open the sealed package or sealed disk package.
- 2. Property**                                      Copyright and property of this Software, logo, name, manual and all literature for this Software belong to Roland and its licensor.

The followings are prohibited :

  - (1) Unauthorized copying the Software or any of its support file, program module or literature.
  - (2) Reverse engineering, disassembling, decompiling or any other attempt to discover the source code of the Software.
- 3. Bounds of License**                      Roland does not grant you to sub-license, rent, assign or transfer the right granted under this agreement nor the Software itself (including the accompanying items) to any third party.

You may not provide use of the Software through time-sharing service and/or network system to any third party who is not individually licensed to use this Software.

You may use the Software by one person with using a single computer in which the Software is installed.
- 4. Reproduction**                              You may make one copy of the Software only for back-up purpose. The property of the copied Software belongs to Roland.  
You may install the Software into the hard disk of a single computer.
- 5. Cancellation**                              Roland retains the right to terminate this agreement without notice immediately when any of followings occurs :

  - (1) When you violate any article of this agreement.
  - (2) When you make any serious breach of faith regarding this agreement.
- 6. Limitations on Liability**                      Roland may change the specifications of this Software or its material without notice.

Roland shall not be liable for any damage that may caused by the use of the Software or by exercise of the right licensed by this agreement.
- 7. Governing Law**                              This agreement is governed by the laws of Japan, and the parties shall submit to the exclusive jurisdiction of the Japanese Court.



26015481-R1

R1-040409