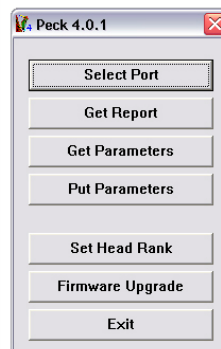


PECK4 Tool Users Guide



Overview

The Peck Tool is valuable to have with you when performing an installation or when on a service visit. It has a number of functions ranging from retrieval of the service report in a digital format, to upgrading firmware. This document serves as an overview of all the functions of the Peck Tool.

Supported Models

- ProII Series (Parallel / Network) (Need firmware version 2.0 or above to use this tool)
- ProIIV Series (Network)
- SP-300/300V/300VS (USB)
- SP-540V/540VS (Network)
- SJ-1000/1045 (Network)
- AJ-1000 (Network)
- XC-540 (Network)

How to Install

It is not necessary to install this tool. Just double click the tool to launch it.

How to Uninstall

Delete the peck.exe and also the peck.ini which is created under the [Windows] directory. This tool doesn't use the Windows registry.

PASSPORT



Service Bulletin

5/19/2006

Communicating with the Machine

It is necessary to turn on the Primary Power SW and turn off the Secondary Power SW when communicating with the machine. This tool cannot communicate with the machine if the Secondary Power SW is on.

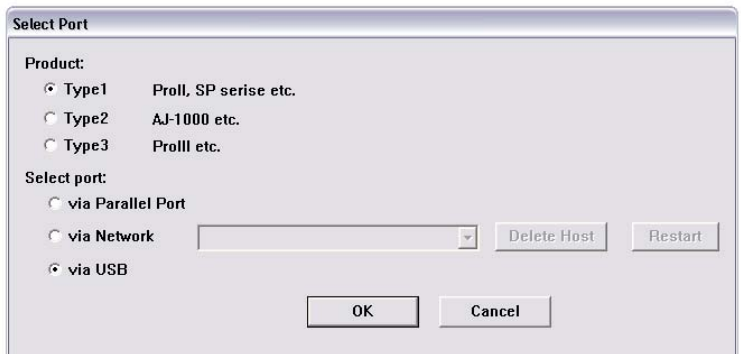
Select Port

The select port button allows you to choose which type of product and connection you have to the machine.

Product

This section allows you to select the type of printer you are connecting to.

- **Type1** is for ProII/ProIIV and VersaCamms.
- **Type2** is for the AJ-1000
- **Type3** is for the ProIII (XC-540)



Select Port

- **Parallel Port**
If you use this tool via parallel port on Windows 2000 or Windows XP, you must stop the [Print Spooler] service from [Control Panel] - [Administrative Tool] – [Services]. After communicating, restart the [Print Spooler] service.
- **Network**
If your machine uses a network connection, Select [via Network] and type in the machines IP address.
 - **Delete Host** – The Peck Tool will remember your past network hosts. Use this button to delete the curenly selected host from the list.
 - **Restart** – This will restart the network server on the machine.
- **USB**
If you are using this tool to connect to a machine using USB, you must first install the SP-300 Windows driver. [Click here to download driver](#)



PASSPORT



Service Bulletin

5/19/2006

Get Report

Get Report

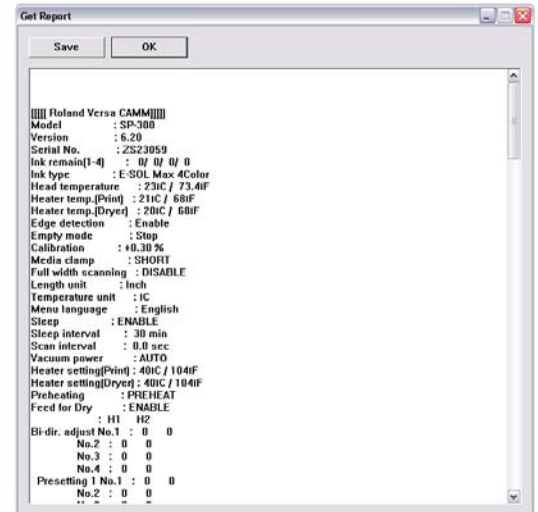
This function allows you to get the full system report, service report and history report from the machine. Once this information is retrieved, you can review the information within the Peck Tool as shown, or you can choose to save this information for future reference.

- **Save**

If you choose to save the information, select [Save]. A [Save As] dialog box will appear and you will need to input a file name with the .txt extension and point to where you would like to save the file. You can then view this information in the text editing software of your choice.

- **OK**

This option will close the report window and will bring you back to the Peck Tool window



Get Parameters

Get Parameters

This function is a great time saver when replacing a main board. The Parameters is all the information the main board needs that is unique to the machine. Some of this information includes serial number, head ranks, calibrations and reports.

When you select [Get Parameters], the Peck Tool will retrieve all the parameters from the machine and prompt you with a [Save As] dialog box. Input a name and point to where you would like to save this information. No file extension is needed.

Put Parameters

Put Parameters

The [Put Parameters] function allows you to send the saved parameters to a new main board.

When you select this button, it will prompt you with an [Open] dialog box. Browse to the parameter file you have saved and select [Open]. The new parameters will be sent to the machine.



PASSPORT



Service Bulletin

5/19/2006

Set Head Rank Set Head Rank (It is recommended to perform these settings on the printers control panel)

The Set Head Rank function can be used during a head replacement to input the new head rank information onto the main board. This can also be done on the machines control panel in the [Service Menu]. *Please refer to the Head Replacement section of the Service Manual for proper head replacement procedures.*

- **Head No.**
This is where you select the head you have replaced. Heads are numbered from left to right as you're facing the machine.
- **Head Rank**
Input the head rank exactly how it appears on the manifold tab of the new head or on the box the head arrived in.
- **Set**
Once the proper head rank is input into the head rank fields, select [Set] to send the settings to the machine.
- **Reference**
This is for importing a head rank reference file. These reference files are not available for new heads and therefore, this function should not be used.

Firmware Upgrade Firmware Upgrade

The Peck Tool can be used to upgrade the firmware on a machine. You can download the newest firmware for your machine from the [Roland DGA support page](#). After you have located the firmware for your device, you need to extract the .exe file you have downloaded. The file you will need will have an .rfw extension.

Select [Firmware Upgrade] in the Peck Tool. You will be prompted with an [Open] dialog box. Browse to the .rfw file you downloaded and extracted, select it and then select [Open]. The new firmware will be sent to the machine.

Once the Peck Tool has completed sending the file, you will be prompted with a message saying [Done]. Select [OK]

Exit Exit

This will close the Peck Tool.

