

R-WearStudio



What is R-WearStudio?

- ❖ Roland R-WearStudio is a powerful new design software that supports Roland R-Wear Business Solutions. Designed to meet the demands of custom apparel and gift shops, R-WearStudio offers all the necessary design elements for a range of profitable applications including
 - Heat-transfers for apparel
 - Gift engraving
 - Hotfix rhinestones
 - Vinyl lettering, labels, and decals.

- ❖ With R-WearStudio, users can even produce multimedia apparel decorations combining rhinestone embellishments and heat transfers together using vector based designs, logos and lettering

File Formats Supported

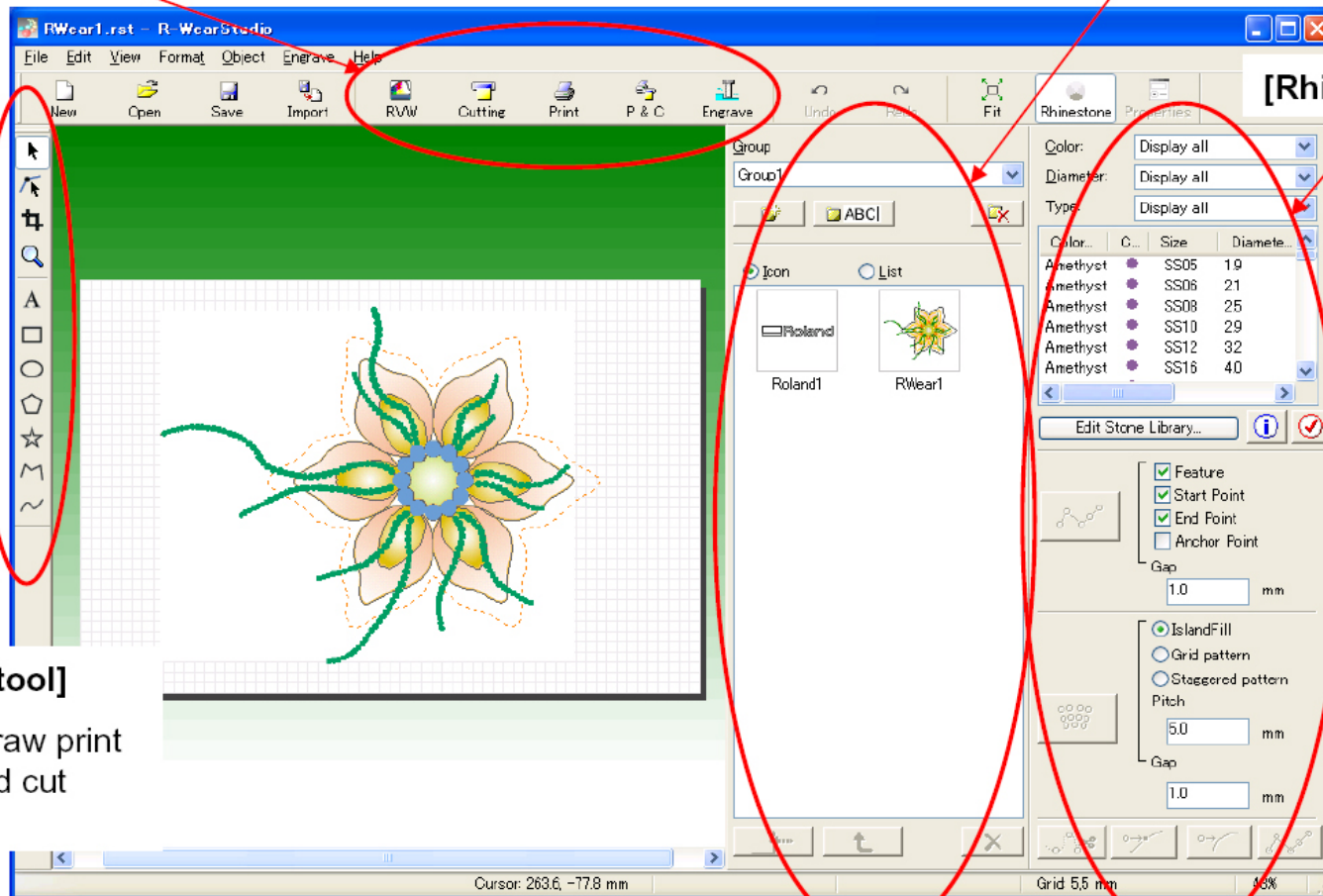
- ❖ JPEG (*.JPG) in RGB or CMYK mode
- ❖ BMP (*.BMP)
- ❖ GIF (*.GIF) Animation GIF is not supported
- ❖ PNG (*.PNG) Transparent PNG is not supported
- ❖ AI (*.AI, *.EPS) Adobe Illustrator v8.0. Only able to read vector lines only. Color data and fills are not able to be imported.
- ❖ EPS (*.EPS) CorelDRAW. Only able to read vector lines only. Color data and fills are not able to be imported.
- ❖ CST (*.CST) CutStudio version 1.26 or higher supported

Main Screen of Software

[Output devices] RVW, Cutting machine, Printer, Engraving machine

[Symbol libraries]

[Rhinestone libraries]



[Drawing tool]

You can draw print objects and cut lines.

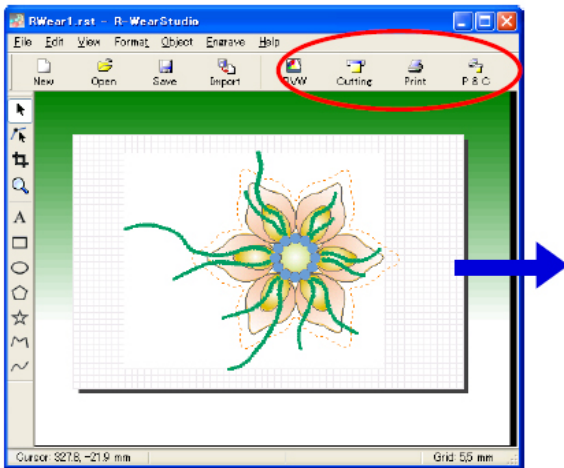
Devices supported by R-WearStudio



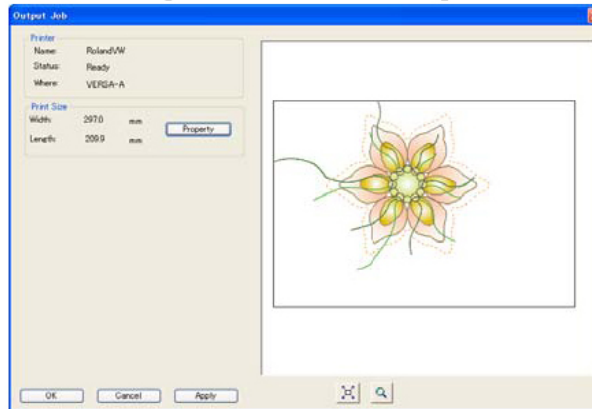
1. Roland VersaWorks supported printer (Print/Cut). This includes XC/SP & VP Series.
2. Roland GX-24 cutting only.
3. 3rd Party Printer (EPSON, HP, CANON, LEXMARK, etc...) which has a Windows Printer Driver or PostScript driver (RIP) installed.
4. Print & Cut – 3rd Party Printer and Roland GX-24 for print and cut application.
5. Engrave to Roland EGX-30, EGX-300 and EGX-350.

Job Preview

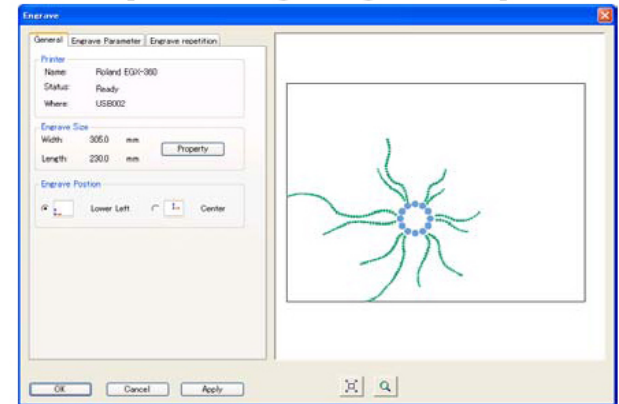
❖ Jobs can be confirmed individually for each output device.



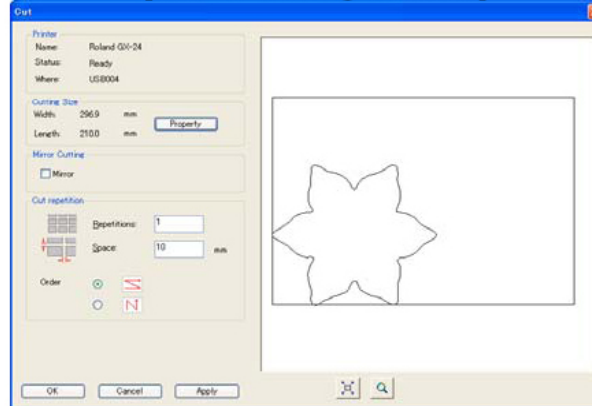
[Job for VersaWorks]



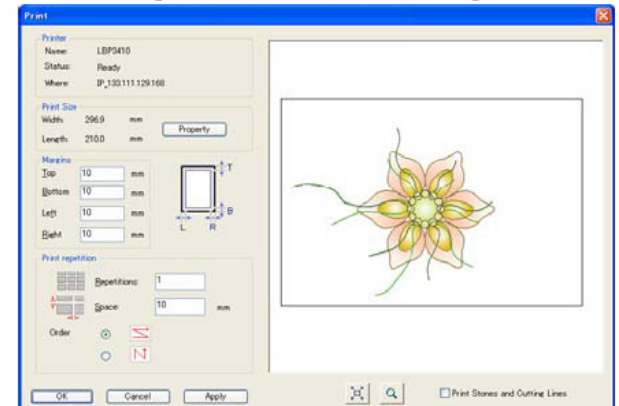
[Job for Engraving Machine]



[Job for Cutting Machine]

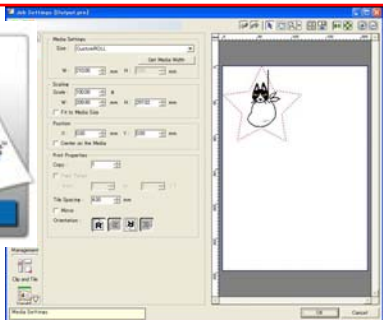
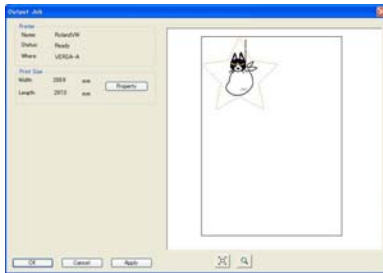
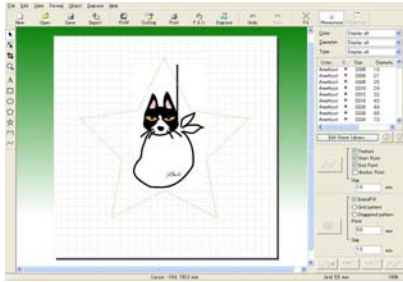


[Job for General Printer]

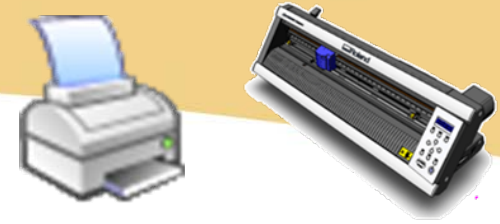




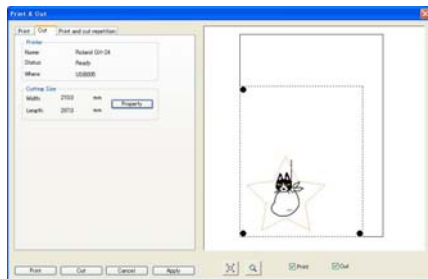
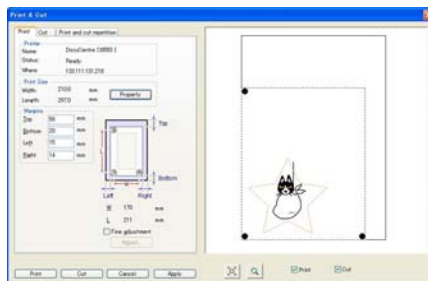
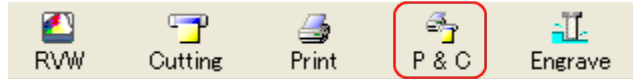
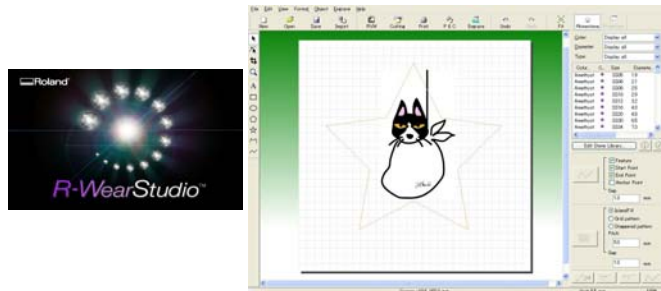
Print & Cut Workflow for Roland Printer/Cutter



1. Launch R-WearStudio and create design with cutting line.
2. Click on RVW Icon (Roland VersaWorks).
3. Click print and save the file with the .PRN extension.
4. Launch VersaWorks and import graphic and configure printing parameters.
5. RIP and Print the job. The Printer will print and contour cut the graphic.



Print & Cut Workflow for 3rd Party Printer & GX-24 Cutter



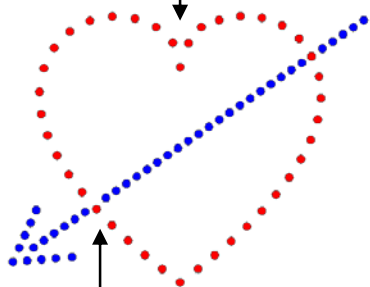
1. Launch R-WearStudio and create /import design and generate the cutting line.
2. Click on P&C Icon (Print & Cut).
3. Output the file to the 3rd party printer. R-Wear Studio automatically adds the crop marks based on the page size of the printer driver for cutting with the GX-24.
4. Load the printed sheet in the GX-24 and send cut data. Optical registration will occur and the file will be contour cut.



Key features of the rhinestone placement

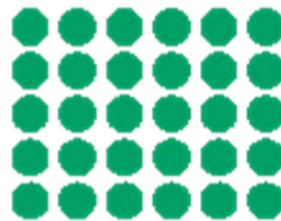
- ❖ Rhinestone function finds the key feature points of the lines in graphics and text.
- ❖ Automated fill feature.
- ❖ Collision avoidance feature (keeps stones from overlapping or touching each other).

Sets stones on to feature points

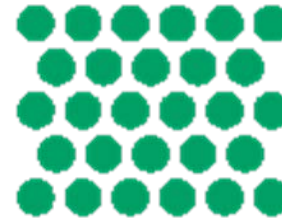


No overlapping

Fill Patterns



Grid Pattern



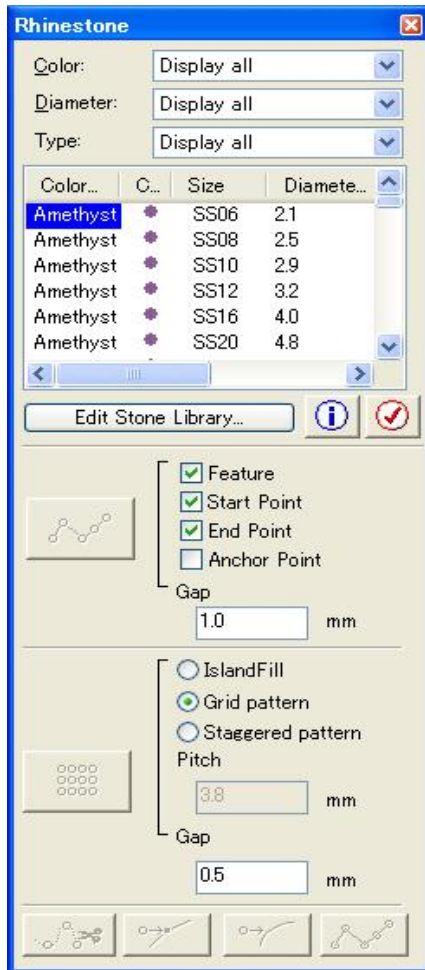
Staggered Pattern



Island Fill



Operations related to the Rhinestones in one window.



- ← Rhinestone Library

 - Choose which stones to use
 - Filter stones on view by color and size
 - Able to put one stone when dragged
- ← Show the type, quantity, and total price of the used stones

← Confirm the overlapping stones
- ← Set stones onto the chosen line of the shape

 - Specify the desired location to set the stones
 - Specify the distance between the stones
- ← Fill inside of the chosen shape

 - Select the fill pattern
 - Specify the distance between the stones
- ←

 - Separate the set stones to move or delete
 - Snap the stones onto lines or points
 - Return to original shape



Rhinestone Library

❖ Swarovski Rhinestone Library is preinstalled.

[Swarovski Rhinestone Libraries]
Hot Fix series (About 500 kinds of various colors and sizes)

[Copy] You can register additional items by copying.

[Cost] Allows you to specify cost for each type of stone. When pricing is registered, you can see the total cost in the [Used Stone Info].

[Used Stone Info] It shows all the Rhinestones used in the job.

Color...	C...	Size	Diamete...
Amethyst	SS30	6.5	
Amethyst	SS34	7.3	
Aquamarir	SS10	2.9	
Aquamarir	SS16	4.0	
Aquamarir	SS05	1.9	
Aquamarir	SS06	2.1	
Aquamarir	SS08	2.5	

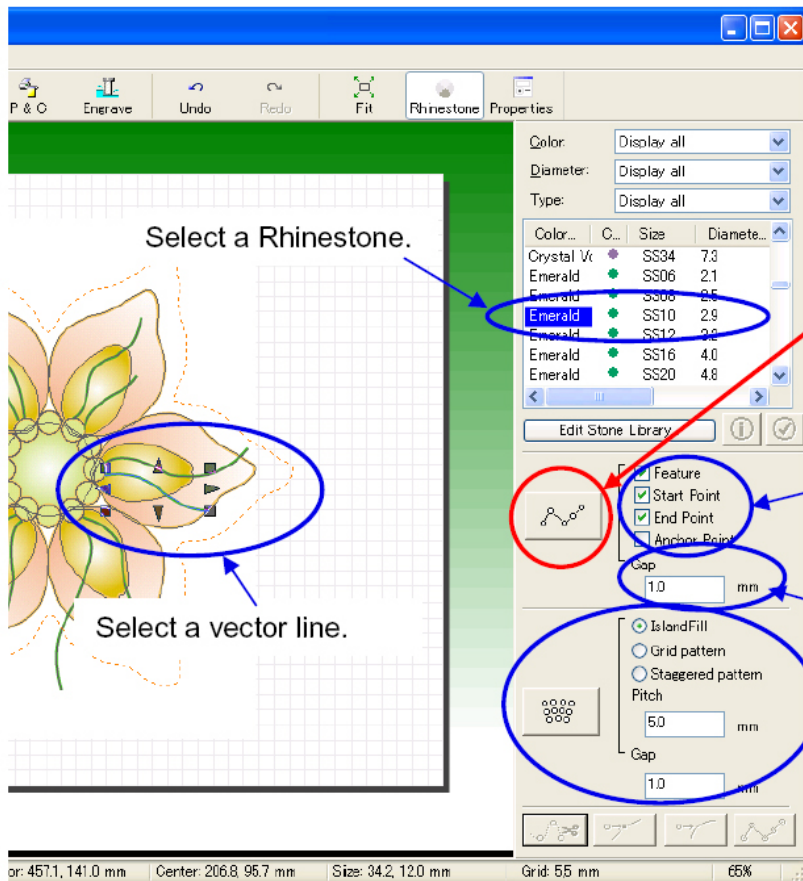
HotFix Rhinestone:

A type of rhinestone with a heat activated glue on the back. By adding heat, the glue will melt and stick to the fibers of the garment material.

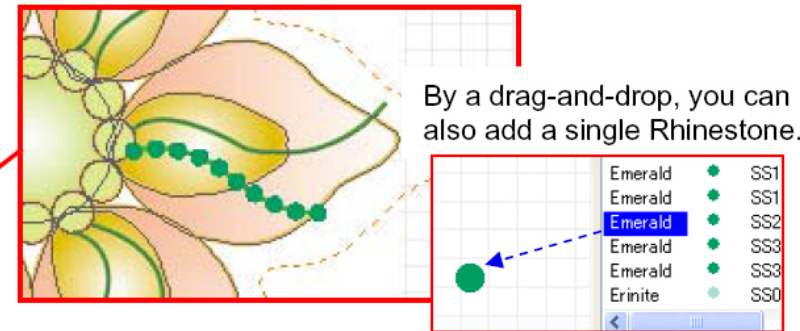


Setting the Rhinestones

❖ Rhinestones can be set automatically along a selected vector line.



Click the button to set the Rhinestones.

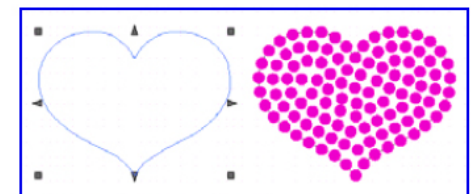


By a drag-and-drop, you can also add a single Rhinestone.

Select the settings for the better Rhinestone arrangement. Depending on the settings, the locations of the Rhinestones change. The best setting depends on the feature of the vector line.

Specify the gap between Rhinestones.

Click the button. It fills an object with Rhinestones under the settings you specify here.

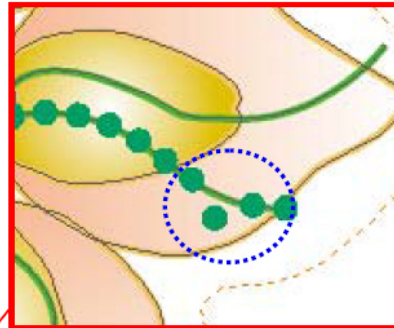




Editing the Rhinestones

❖ The position of the individual rhinestones can be adjusted manually.

Click the button to ungroup the Rhinestones.



Each Rhinestone can be moved manually by mouse.

Select the Rhinestone group.

Color..	C..	Size	Diamete..
Crystal Vt	SS34	7.3	
Emeraid	SS06	2.1	
Emeraid	SS08	2.5	
Emeraid	SS10	2.9	
Emeraid	SS12	3.2	
Emeraid	SS16	4.0	
Emeraid	SS20	4.8	

Feature: Feature
 Start Point
 End Point
 Anchor Point

Gap: 1.0 mm

IslandFill: IslandFill
 Grid pattern
 Staggered pattern

Pitch: 5.0 mm

Gap: 1.0 mm

Rhinestone Interference Check

Snap function for single Rhinestones.

Clears the Rhinestone group.

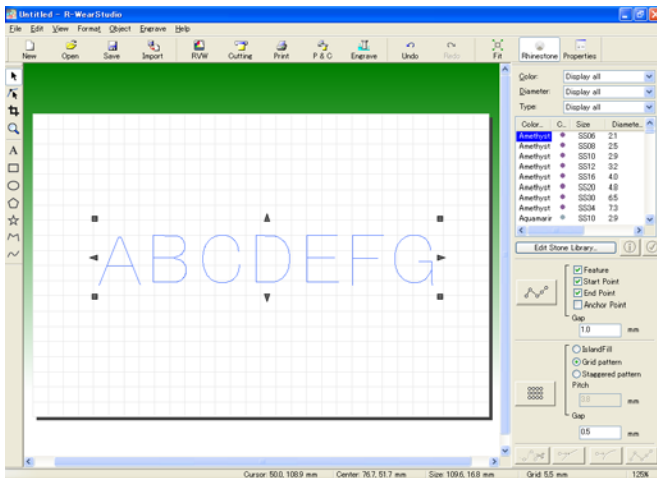
Caution: If you use the delete button on PC to remove the Rhinestone group, the original vector line does not come back.



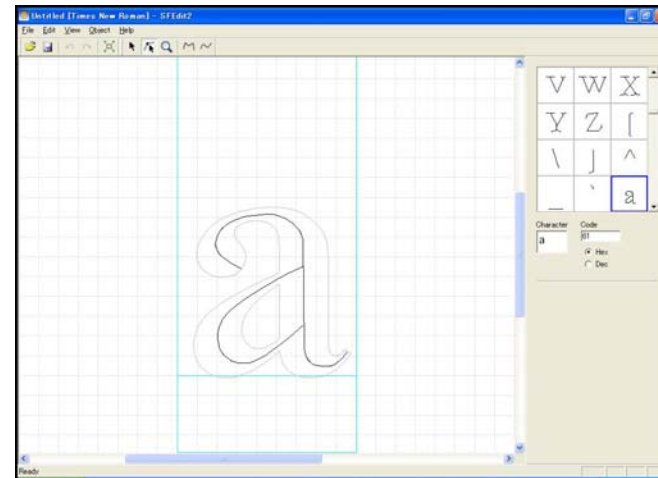
SFEdit2 (Stroke font editor)

- ❖ Single line font creation and editing software included with R-WearStudio.
- ❖ Automatically converts any Windows TrueType font into a Stroke font for use with R-WearStudio.
- ❖ Font library can be edited to clean up fonts if necessary.

Input line text to R-WearStudio



Editing of line text (SFEdit2)

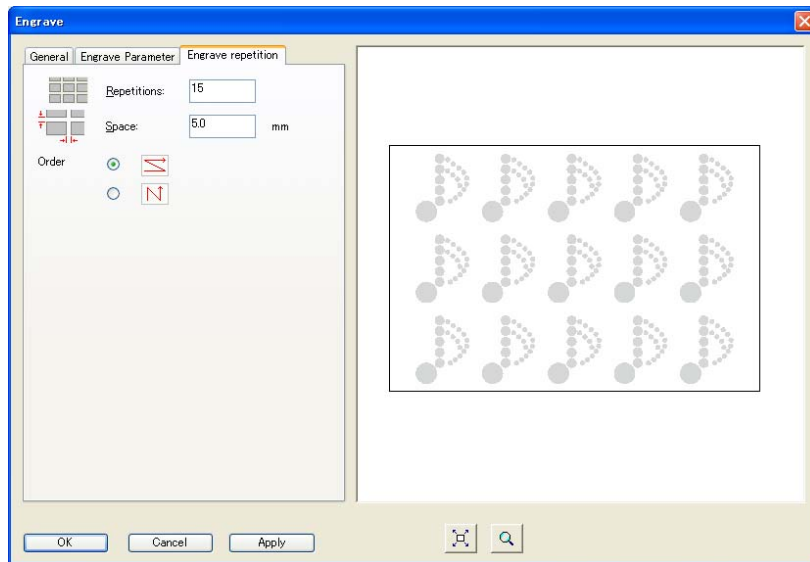




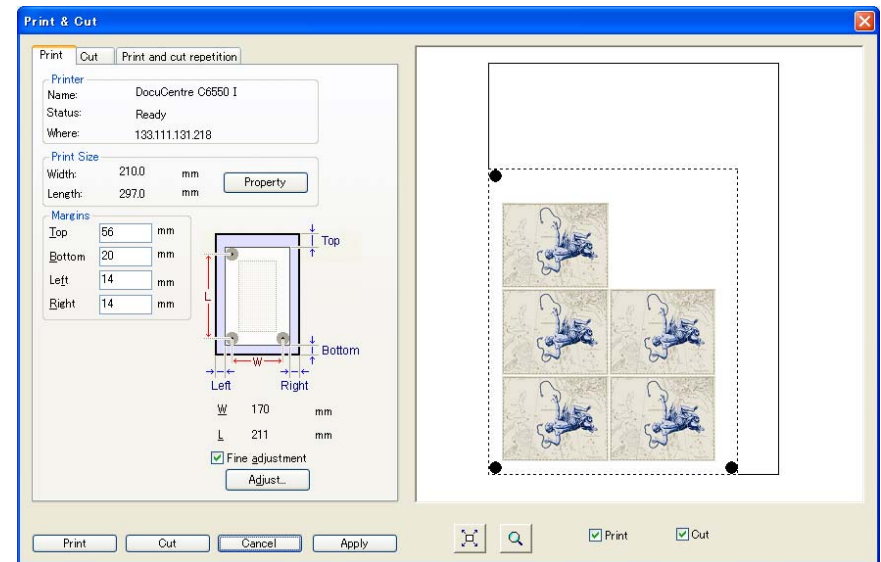
Output multiple patterns/designs

- ❖ Possible to output multiple patterns/designs on one sheet (Print/Cut) or one plate (Engrave).

Line up 15 images and engrave onto one plate



Line up 5 images to print and cut

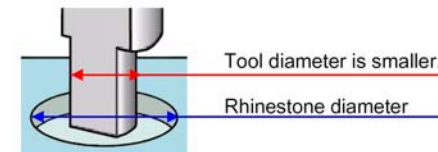
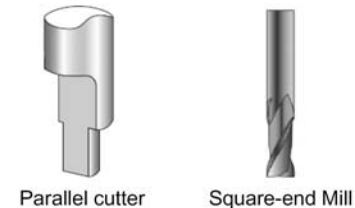




Motif template creation

❖ Type of tools used (can only engrave round holes)

- Parallel Engraving Cutters
- Flat End Mills
- Can register new tools into the tool library
- Diameter of the tool should be less than the rhinestone diameter. This will provide better engraving quality.



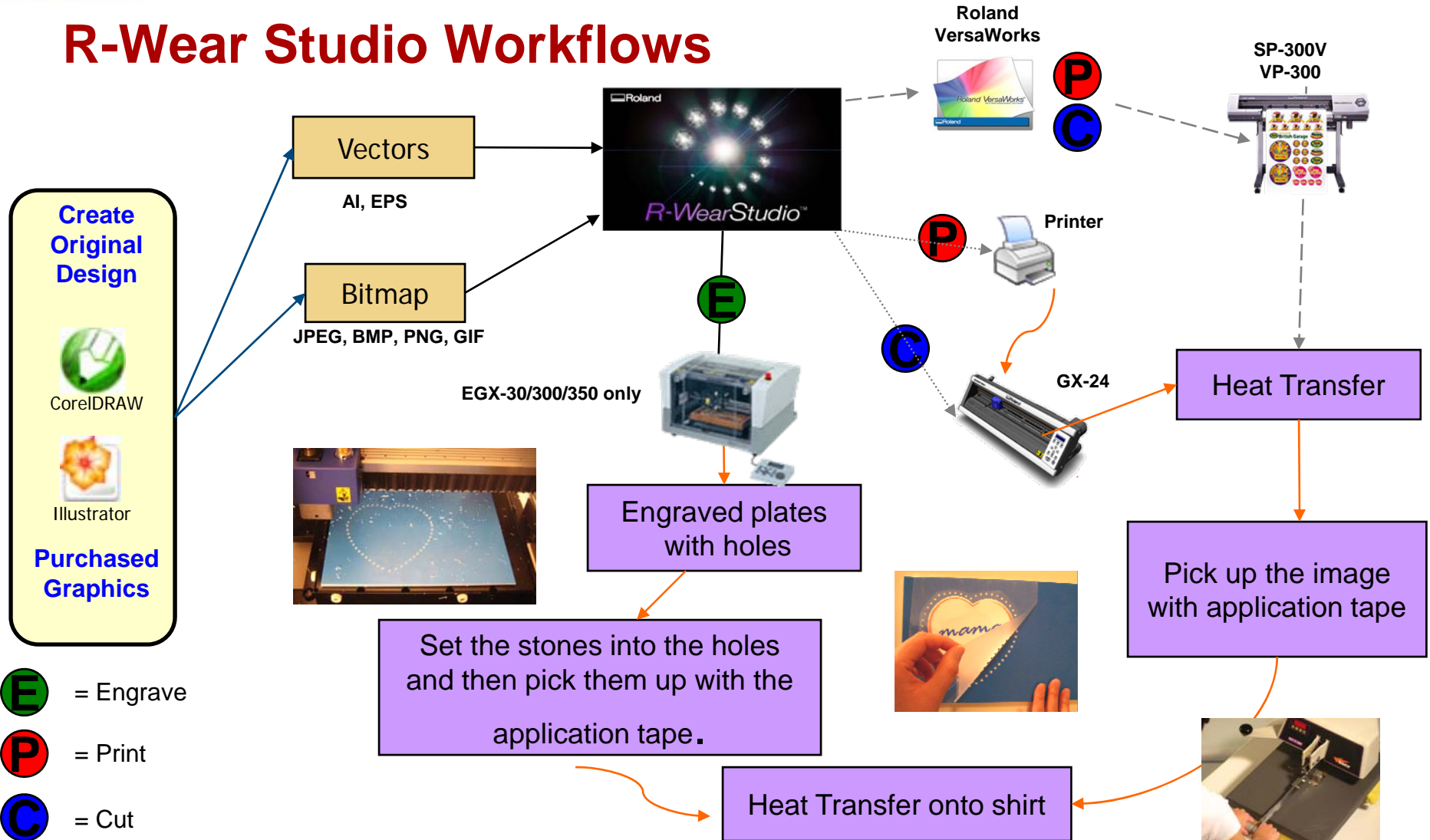
❖ Types of materials used

- **MDF, ABS**, Polyacetal & Acrylic (MDF & ABS are preferred)
- Can register new materials into the material library

❖ Can engrave onto separate plates for multi color, multi size templates

- Can select color to engrave
- Can separate plates by color and size

R-Wear Studio Workflows





System Requirements

- ❖ OS: Windows 2000/XP/VISTA (32 bit edition only)
- ❖ CPU: Pentium 4 2GHz or better is recommended
- ❖ Memory: 512MB or better is recommended
- ❖ Hard Disk: 20MB or more for installation
- ❖ Video: 1024x768 resolution, 16 bit color (high color) or above
- ❖ Languages: English, Spanish, French, German, Italian, Japanese



Part number and pricing

❖ Part #: RWSTUDIO

❖ Cost (MSRP): \$499

❖ Promotions:

- New Purchase: If R-WearStudio is bundled with EGX-30/350, cost of software will be \$299.00
- Current Owners: 90 day promotional period (9/15/08 – 12/15/08) for EGX-30, EGX-300 and EGX-350 users to purchase software at the special price of \$299.00. After the 90 day period, price of the software reverts back to \$499.