



Roland
SelectColorTM

Bundled with all PRO II machines

FJ-540

CJ-540

SC-540

SJ-540

SJ-740



RSC Introduction

- ◆ **Bundled with all PRO II printers**
- ◆ **New, Easy User Interface**
- ◆ **Full Featured Layout Options**
- ◆ **IntelligentPrintControl**
- ◆ **Robust Color Management System**
- ◆ **Networking Capabilities**

FJ-540

CJ-540

SC-540

SJ-540

SJ-740



RSC Specifications

◆ Supported Operating Systems

- Windows 2000/XP
 - Windows 98/ME Clients
- Mac OS X (in development)
 - No Mac OS 9 (Classic) support

◆ Minimum 2000/XP Requirements

- CPU: Pentium 4 1.5GHz or faster
- RAM: 512 MB or more
- Drive: 10 GB or more
- Monitor: 1024 x 768 resolution w/32 bit color
- Recommended: Pentium 4 2GHz, 512 MB RAM, 40G HD, 100 Base-TX

FJ-540

CJ-540

SC-540

SJ-540

SJ-740



RSC Specifications

◆ Bi-Directional Communication with PRO II printer

- Printer Type
- Printer Status
- Port Info
- Media size
- Ink levels

FJ-540

CJ-540

SC-540

SJ-540

SJ-740



RSC Specifications

◆ File Formats Supported

- DCS 2.0
- EPS
- JPEG
- PDF 1.4 (Acrobat 5 format)
- PS
- TIFF

FJ-540

CJ-540

SC-540

SJ-540

SJ-740



Roland SelectColor

Roland SelectColor
File Edit Printer View Help

Roland SOLJET PROII S.J-540

Information

Manufacturer: Roland
Model name: SOLJET PROII S.J-540
Status: Printer online
Hot folder: C:\Program Files\Roland SelectColor\H
Port: TCP/IP:133.111.128.87:9100
Driver version: 1.0.909.25199
Color mode: CMYK(2bit)
Color depth: 2
Resolution: 720x1440
Media type: SOL Heavy Duty Banner (SPVCB)
Paper size: Roll Paper(64in)
Halftone method: Error Diffusion
Output ICC profile: S.J2Sol_SPVCB_720x1440.icm

Name	Status	Sender	Cop...	File format	File size	After print out
Red_0	Completed	color	1	TIFF	423.894MB	Hold
40cm.	Completed	color	1	PS	106.984KB	Hold
SolPo	Completed	color	1	PS	0.000KB	Hold
HASS	Pending	color	3	TIFF	28.927MB	Hold
Swatc	Pending	color	3	TIFF	3.963MB	Hold
FACE	Pending	color	3	TIFF	29.154MB	Hold
Cxs2.t	Pending	color	3	TIFF	35.109MB	Hold
Tiling_	Pending	color	1	PS	97.244MB	Hold
Red_0	Pending	color	1	TIFF	292.592MB	Hold
001.jp	Pending	color	1	JPEG	146.891KB	Hold

FACEs2.tif

Printer online VM:4821MB 4509MB Free C:91.4GB Free

Main screen

FJ-540

CJ-540

SC-540

SJ-540

SJ-740



RSC Interface



EASE OF USE

Add files as multiple jobs

Delete job

Save job

RIP job

Print job

Nest job

UnNest job

Tool Bar

Printer Preview

Printer information

Print File Preview

Print File information

Print Indicator

Print Preview Area

Status Bar

Roland SelectColor

File Edit Printer View Help

Roland Hi-Fi JET PROII FJ-540

Name	Status	Sender	Cop...	For...	File size	After prin
Blue Bird	Pending	kato	1	TIFF	5.500MB	Delete

Manufacturer: Roland
 Model name: Hi-Fi JET PROII FJ-540
 Status: Printer online
 Hot folder: C:\Program Files\Roland SelectColor
 Port: TCP/IP:192.168.0.100:9100
 Driver version: 1.0.923.29976
 Color mode: CMYK/LcLm/2bit
 Color depth: 2
 Resolution: 720x720
 Media type: PET-G Hi Gloss White Film
 Paper size: Roll Paper(54in)
 Halftone method: Stochastic Screen
 Output ICC profile: FJPro2PicLcLm_PET-G_Std.icm

Blue Bird

VM:617MB 412MB Free C:28.2GB Free

- FJ-540
- CJ-540
- SC-540
- SJ-540
- SJ-740



RSC - Blazing Speed



SPEED

- ◆ **2.5 times faster than Roland ColorChoice (RCC)**
 - New, more efficient RIP architecture

- ◆ **Direct RIP of non-PostScript Files**
 - TIFF and JPEG files no longer have to be converted to PostScript before ripping

- ◆ **Image rotation does not affect rip speed**



RSC vs RCC



SPEED

◆ RIP time improves as file size increases

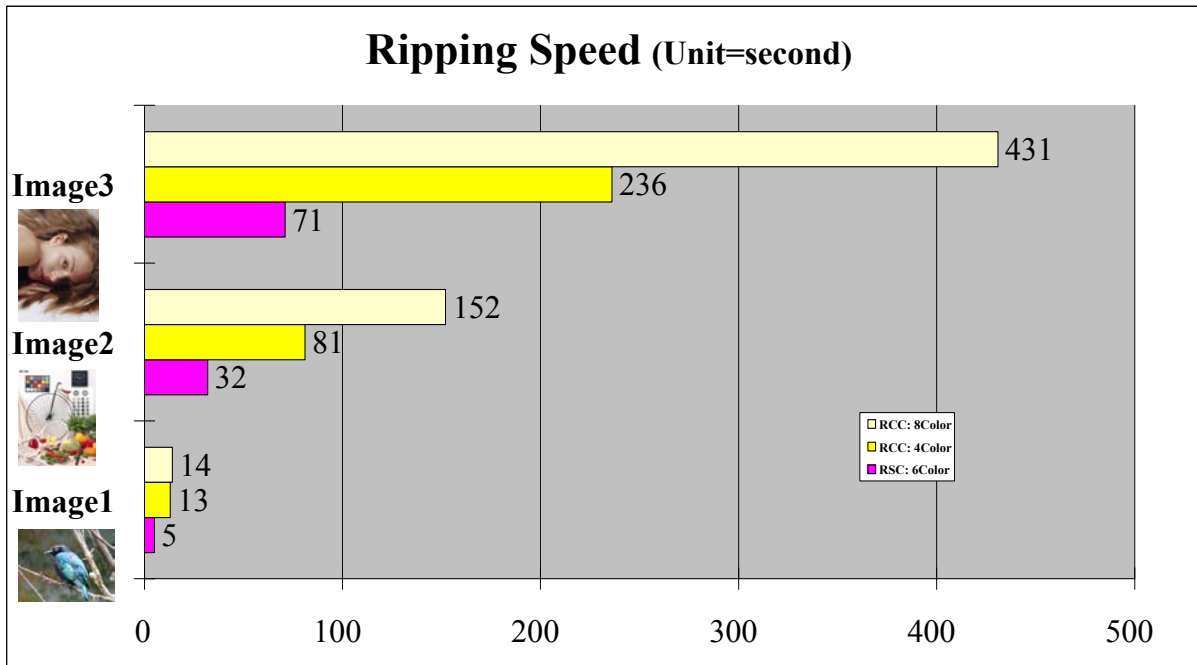


Image1: 2.8MB TIFF
Size: 8 x 6"

Image2: 11MB TIFF
Size: 35 x 44"

Image3: 63.8MB TIFF
Size: 53 x 30"

Test Parameters

PC: Pentium4 2.26GHz / 512MB RAM / 30GB Hard Drive

RIP: RSC1.0 vs. RCC ver.4.5

RSC Print mode: Standard (PET-G) 720 x 720 dpi

RCC Print mode: vSUPER(PET-G) 720 x 720 dpi

NOTE: Test includes Rip time only, does not include print time



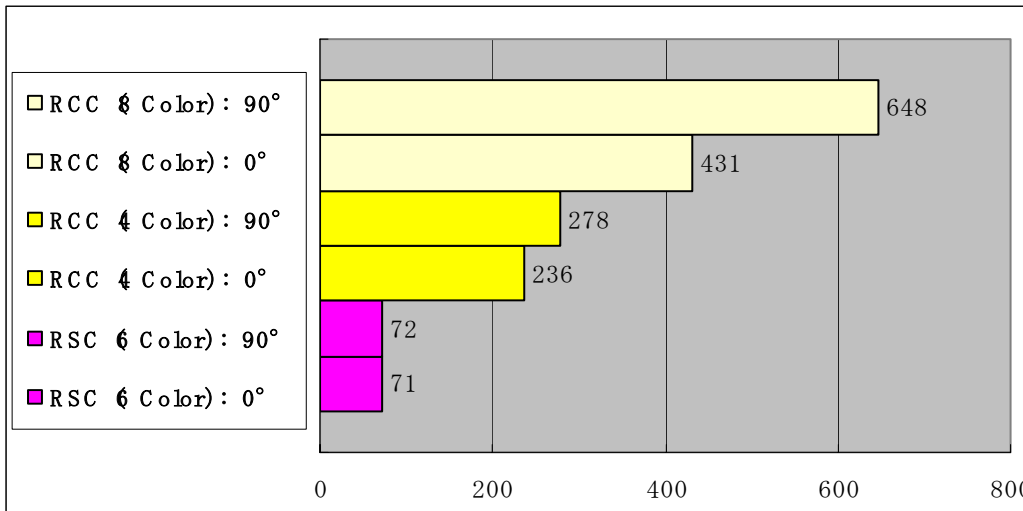
RSC vs RCC



SPEED

◆ Same Rip time when image is rotated

- RCC incurs significant delay after rotation



0° Rotatio



90° Rotation



Test Parameters

PC: Pentium4 2.26GHz / 512MB RAM / 30GB Hard Drive

IMAGE: "Model_Brown" TIFF 63.8 MB @ 150 dpi / 53 x 30"

RIP: RSC1.0 vs. RCC ver.4.5

RSC Print mode: Standard (PET-G) 720 x 720 dpi

RCC Print mode: vSUPER(PET-G) 720 x 720 dpi

NOTE: Test includes Rip time only, does not include print time`

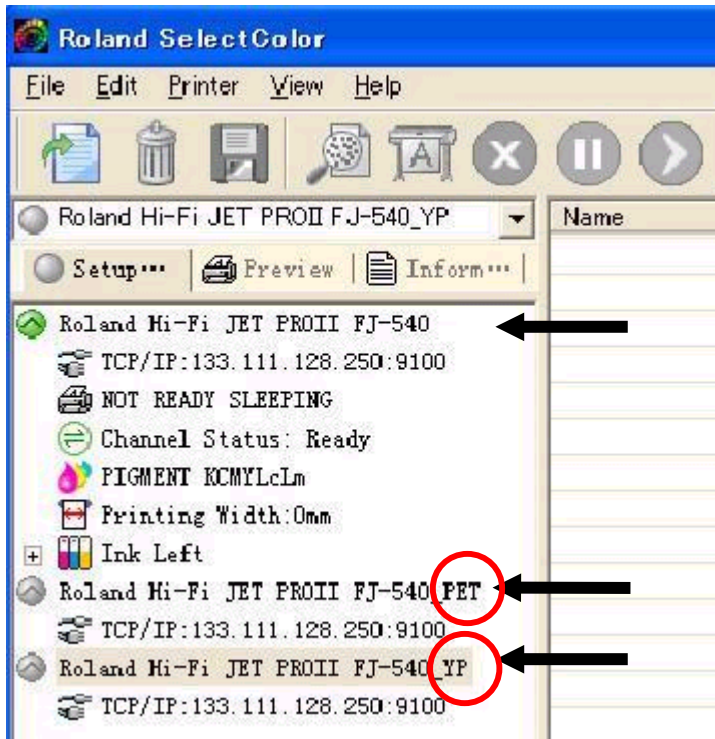


Multiple Printers & Queues



VERSATILITY

◆ Setup multiple queues for each printer



Each print queue can be defined with separate print, media and layout settings

Each queue can be custom named to help signify customized settings

All queues can be seen by client workstations as separate printers

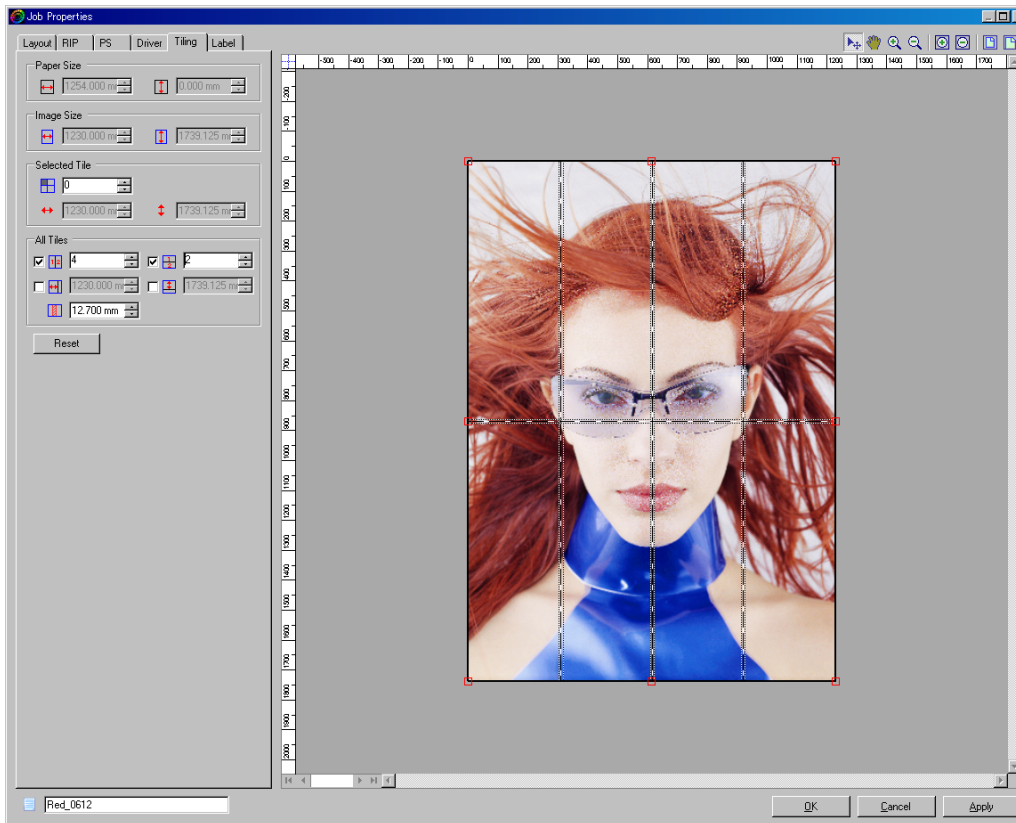


Tiling



VERSATILITY

◆ Automatic and Manual



Tiling allows you to separate your job for custom-sized output “panels”

Helpful when printing images larger than the printer’s maximum print width

Can manually set specific panel sizes to adjust to specific elements of an image

FJ-540

CJ-540

SC-540

SJ-540

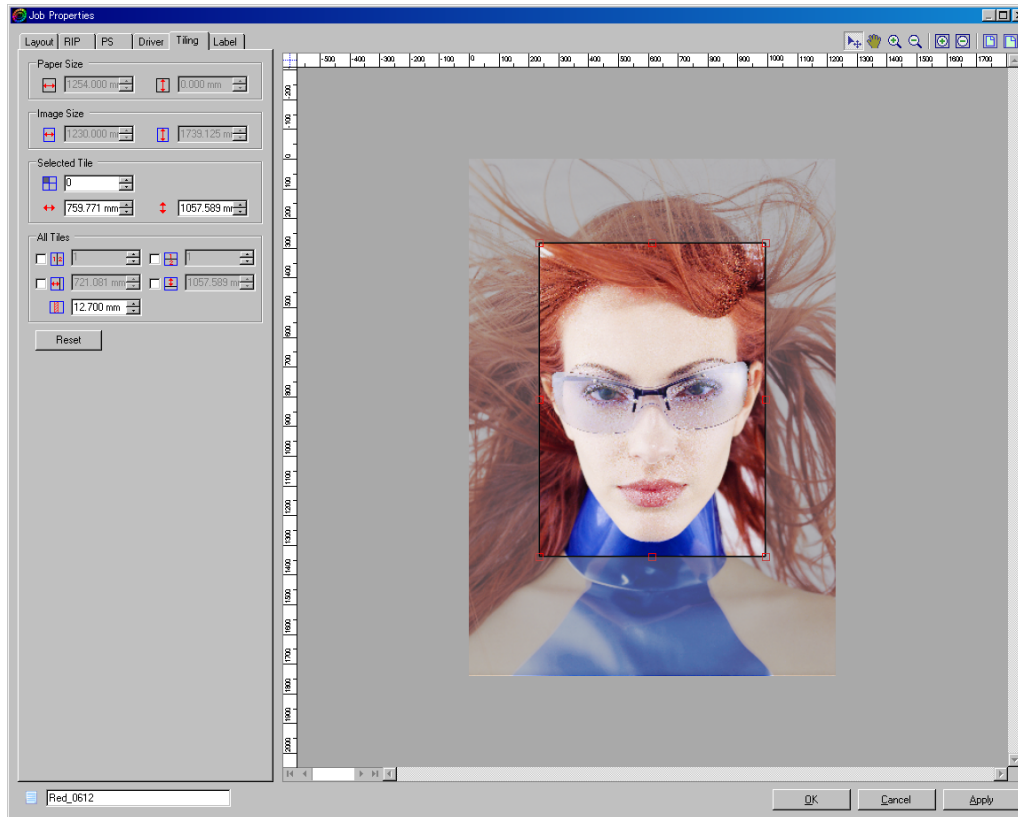
SJ-740



Cropping



VERSATILITY



Built-in cropping tool allows you to print only the selected portion of your image.

Use for partial prints and color checks

FJ-540

CJ-540

SC-540

SJ-540

SJ-740

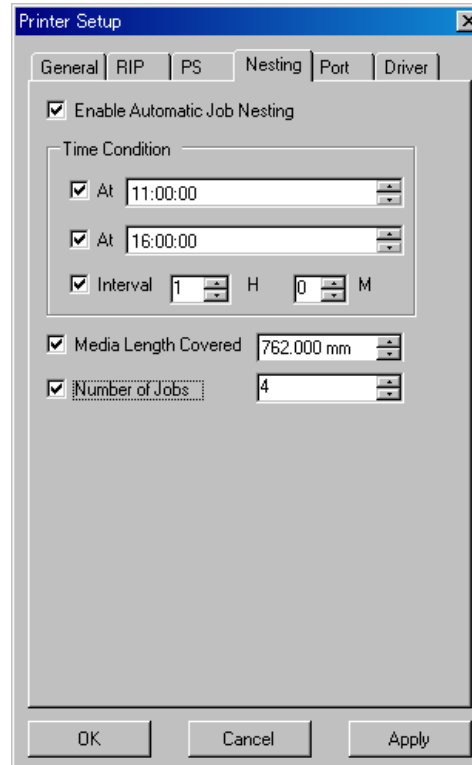
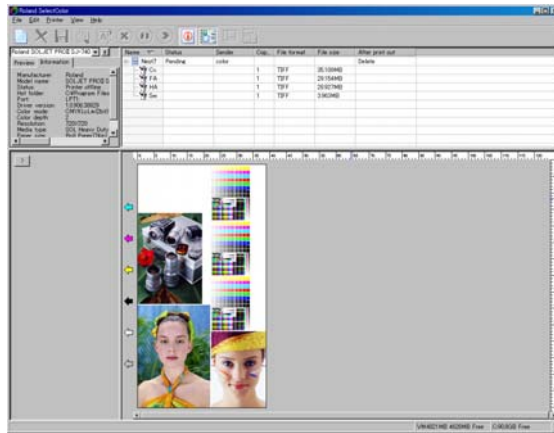
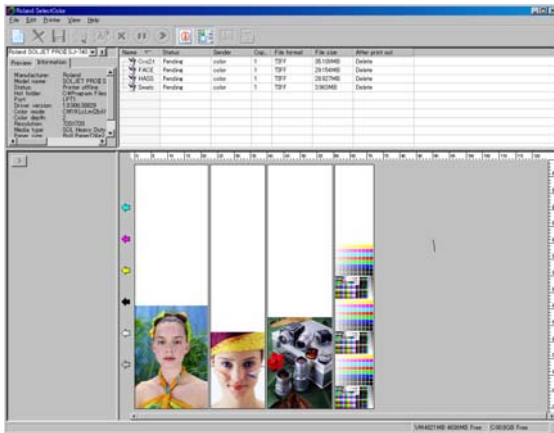


Nesting



VERSATILITY

◆ Automatic Nesting



Multiple jobs can be nested for more efficient media usage.

Each nested job still retains it's own individual and individual job properties.

FJ-540

CJ-540

SC-540

SJ-540

SJ-740

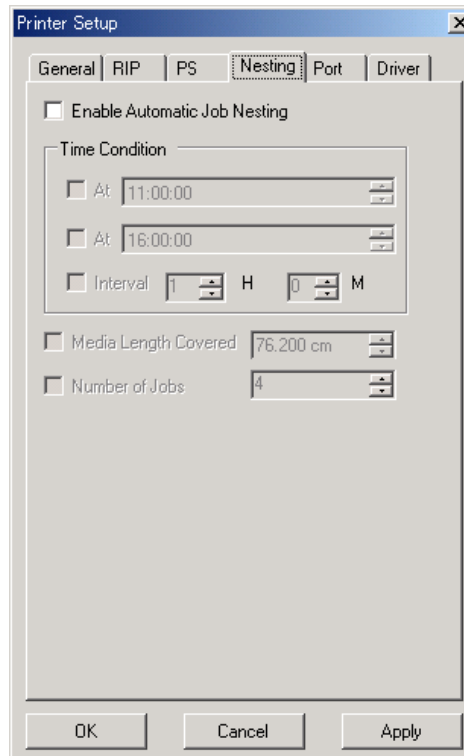
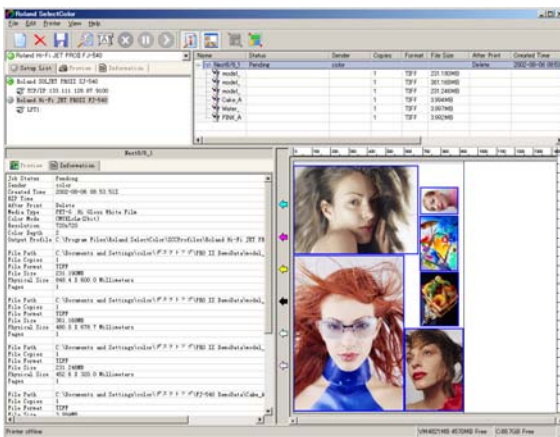
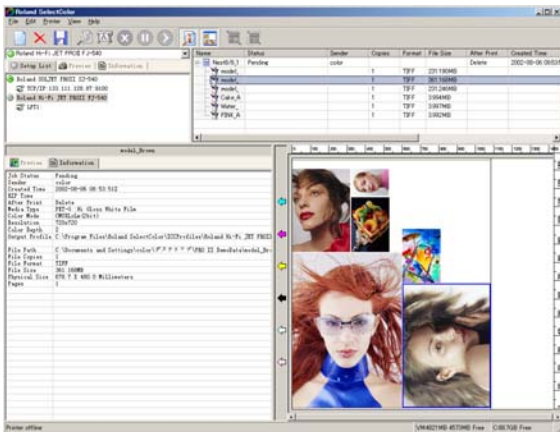


Nesting



VERSATILITY

Manual Nesting



Multiple jobs can be nested for more efficient media usage.

User can determine which image will print in what order

- FJ-540
- CJ-540
- SC-540
- SJ-540
- SJ-740

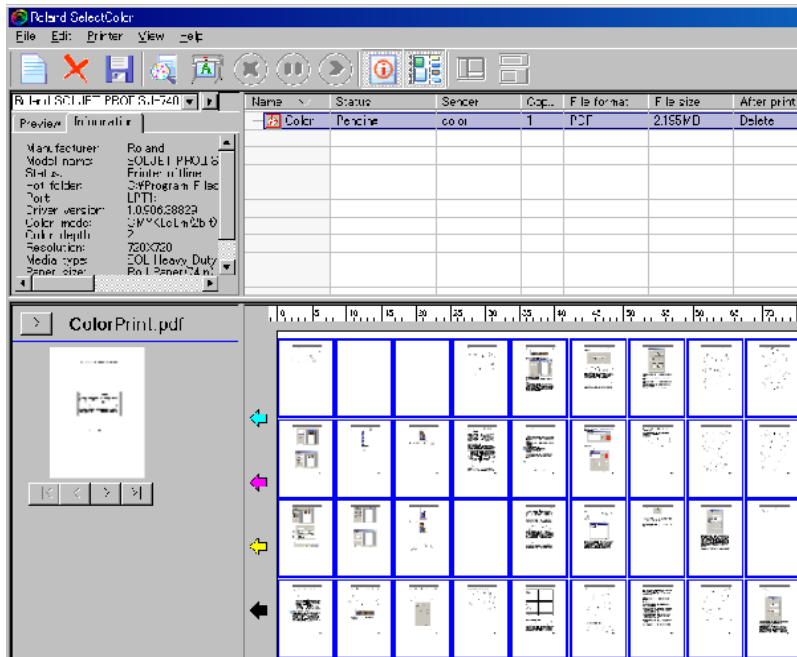


Multiple Page Support



VERSATILITY

- ◆ Automatically steps & repeats multiple pages



Multiple page PDFs

Will fit all pages automatically within media width

FJ-540

CJ-540

SC-540

SJ-540

SJ-740

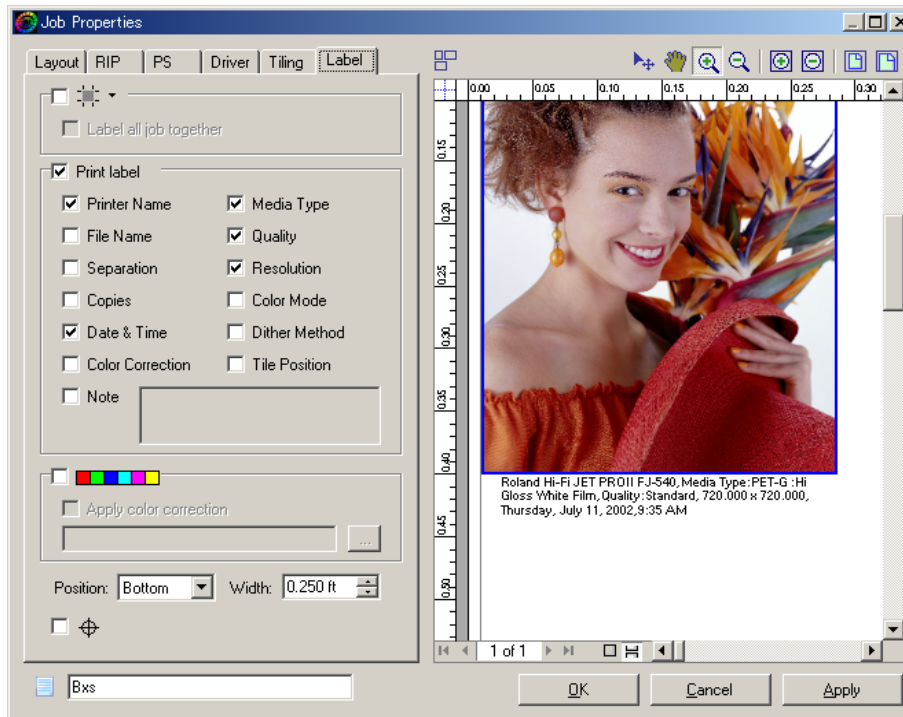


Print Job Properties



VERSATILITY

- ◆ Print various “labels” or job properties



Helps to track job properties easily

Imperative for tracking color management

Color Bars

Registration & Cropmarks

FJ-540

CJ-540

SC-540

SJ-540

SJ-740



IntelligentPrintControl - IPC



EASE OF USE

- ◆ Provides simplified settings for the user
- ◆ Conventional printing modes:
 - Draft, Fast, Fine, Normal, vNormal, Super, vSuper, Photo and vPhoto
 - Too many choices
- ◆ IPC Modes:
 - Speed, Standard, Quality
 - Settings are more understandable



FJ-540

CJ-540

SC-540

SJ-540

SJ-740



- ◆ **Simplified IPC settings are determined by media**
- ◆ **User chooses Speed/Standard/Quality print modes in Roland SelectColor**
- ◆ **IPC is optimized for better color fidelity between print modes**

FJ-540

CJ-540

SC-540

SJ-540

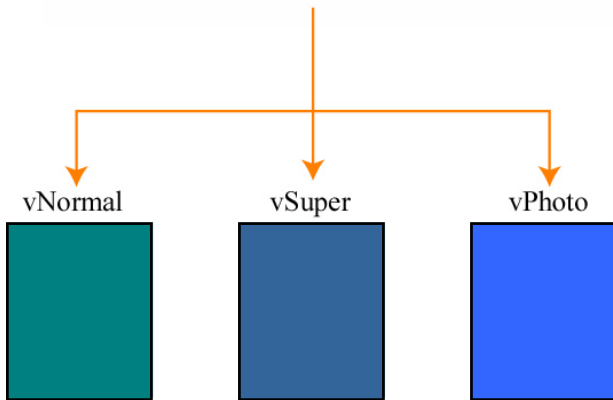
SJ-740



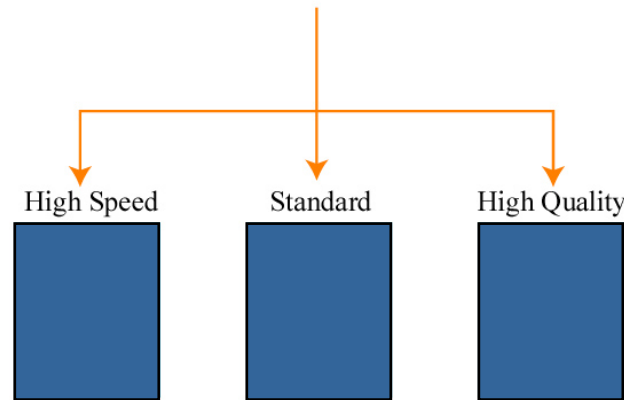
IPC - Color Fidelity



◆ Each print mode is optimized to others



Some Color Difference



Better Color Fidelity

- FJ-540
- CJ-540
- SC-540
- SJ-540
- SJ-740



IPC Benefits



EASE OF USE

- ◆ **Beginning Users can easily select the best print mode for each job**
 - Experienced users can bypass IPC to gain access to advanced print modes

- ◆ **Less media waste**
 - Too many options means more trial and error to find the “best” print settings

- ◆ **Colors match on supported profiles**

FJ-540

CJ-540

SC-540

SJ-540

SJ-740

Intelligent Print Modes



EASE OF USE

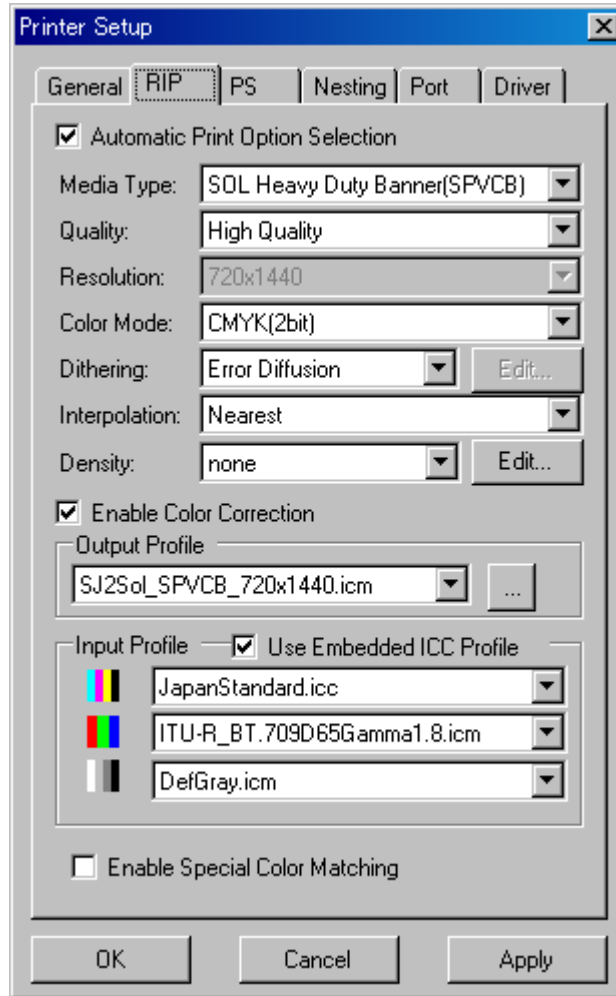
Applications	Media	Print Mode	Resolution (dpi)	Pass	Dot Control	Speed
Standard	Matte Finish	Speed	450 x 360	2	Variable	28 sqm/hr (300 sqft/hr)
		Standard	360 x 720	4		14 sqm/hr (150 sqft/hr)
		Quality	720 x 720	8		7 sqm/hr (75 sqft/hr)
	Glossy Finish	Speed	360 x 720	4	Variable	14 sqm/hr (150 sqft/hr)
		Standard	720 x 720	8		7 sqm/hr (75 sqft/hr)
		Quality	720 x 1440	16		3.6 sqm/hr (39 sqft/hr)
Screen Print	Clear PET Film	Speed	720 x 720	8	Fixed (Large)	T.B.D.
		Standard	1080 x 1080	18	Fixed (Middle)	T.B.D.
		Quality	1440 x 1440	32	Fixed (Small)	T.B.D.
FineArt	FineArt Paper	Photo	1440 x 1440	32	Fixed (Small)	T.B.D.



Embedded Profile Support



VERSATILITY



**If option is checked,
user can utilize
embedded profiles.**

**Acknowledges profile
decision of original artist**

**Adobe Photoshop
and Illustrator
can embed profiles**

FJ-540

CJ-540

SC-540

SJ-540

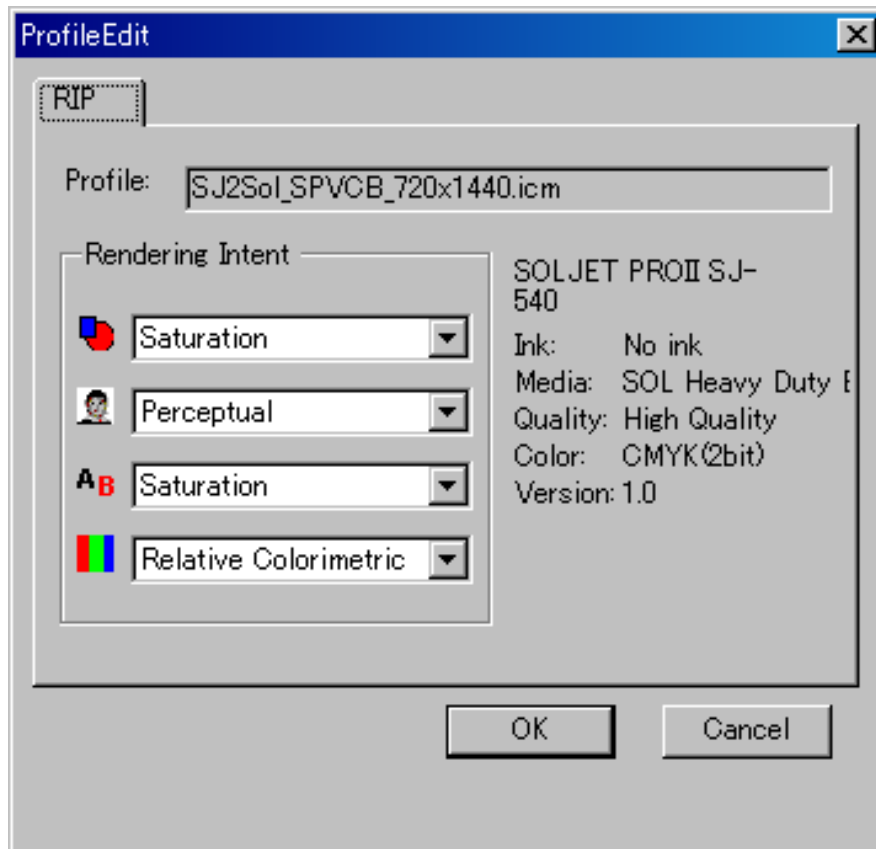
SJ-740



CRD Options



QUALITY



Assign different CRDs (Rendering Intents) to Vector, Bitmap, Text and Gradient elements.

Black text can now be defined to print with only black ink

FJ-540

CJ-540

SC-540

SJ-540

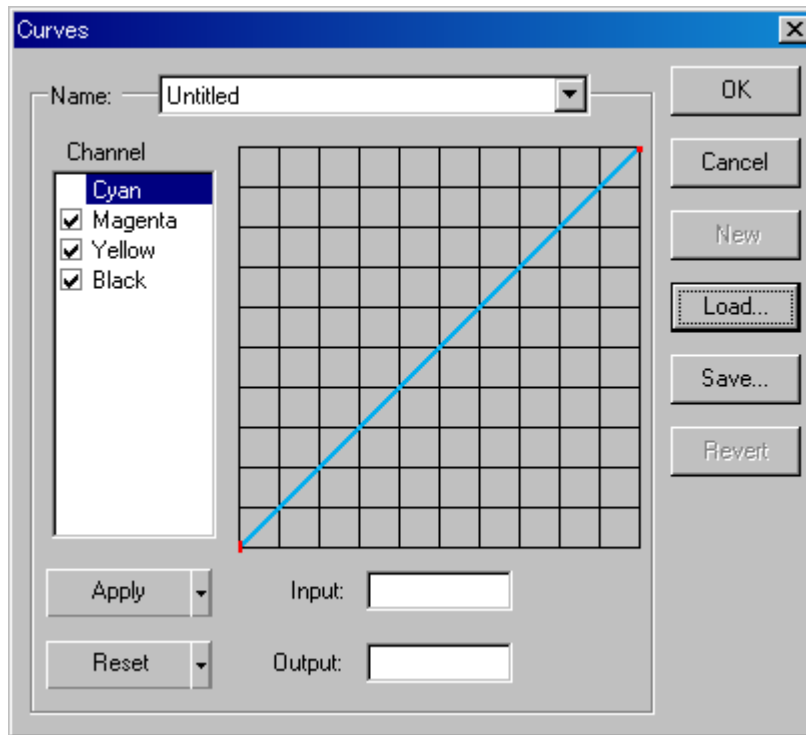
SJ-740



DCS Density Curve Control



QUALITY



Density adjustment can be performed on each color layer of a DCS 2.0 file.

Use for Hexachrome workflow or manual color correction

FJ-540

CJ-540

SC-540

SJ-540

SJ-740



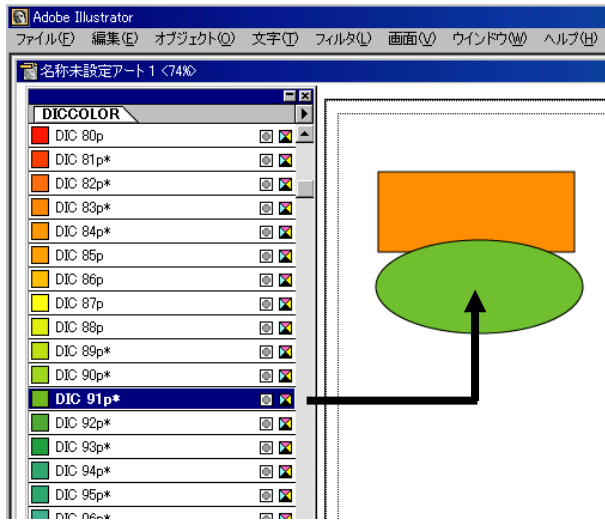
Spot Library Support



QUALITY

◆ Pantone/DIC/TOYO Support

- Define swatch library in Illustrator
- RSC handles the incoming library to create a LUT for proper color conversion



Swatch Library in
Adobe Illustrator



FJ-540

CJ-540

SC-540

SJ-540

SJ-740



Process Spot Color Chart



QUALITY

◆ Color Chart Steps

- Print Color Charts
- Compare target color to chart swatch
- Choose the closest color and input into RSC
- Color Management without a color device



Color Chart

Visually find the closest match and enter the corresponding number into RSC



Print Sample

FJ-540

CJ-540

SC-540

SJ-540

SJ-740



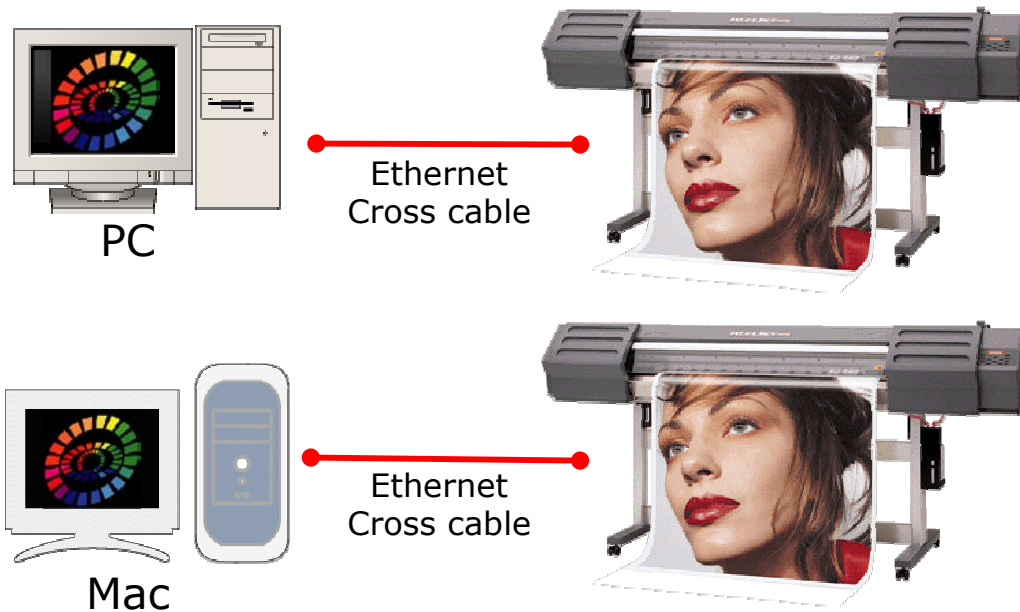
Networking



VERSATILITY

◆ Stand Alone

- Windows XP or 2000
- Mac OS X (under development)



FJ-540

CJ-540

SC-540

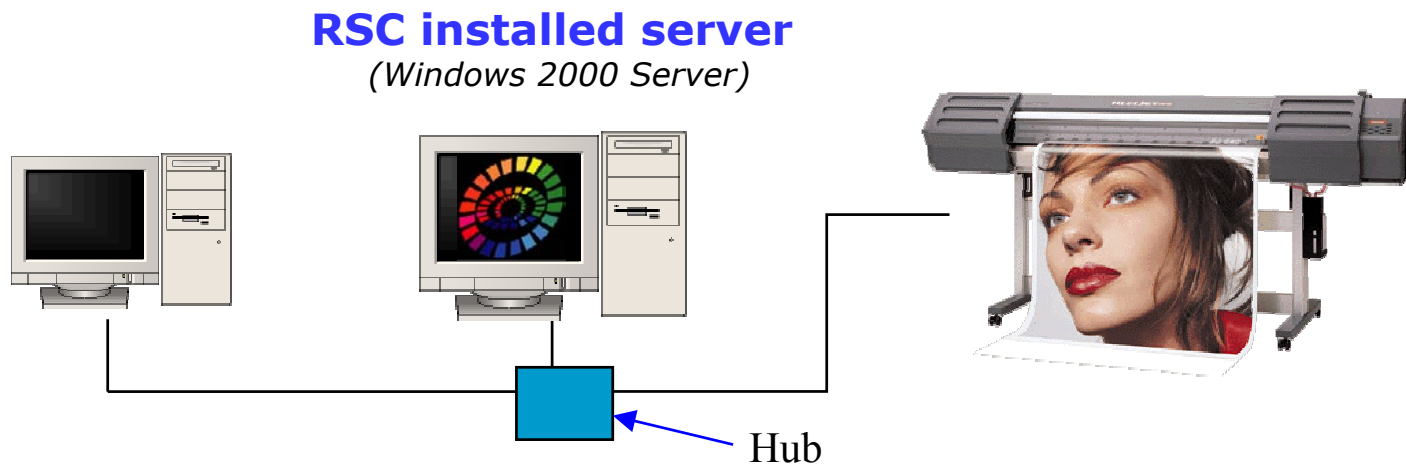
SJ-540

SJ-740



◆ One server, one client

- RSC installed on Windows 2000 server
- Client can be Windows 98, ME, 2000 and XP
- Client can also be Mac



FJ-540

CJ-540

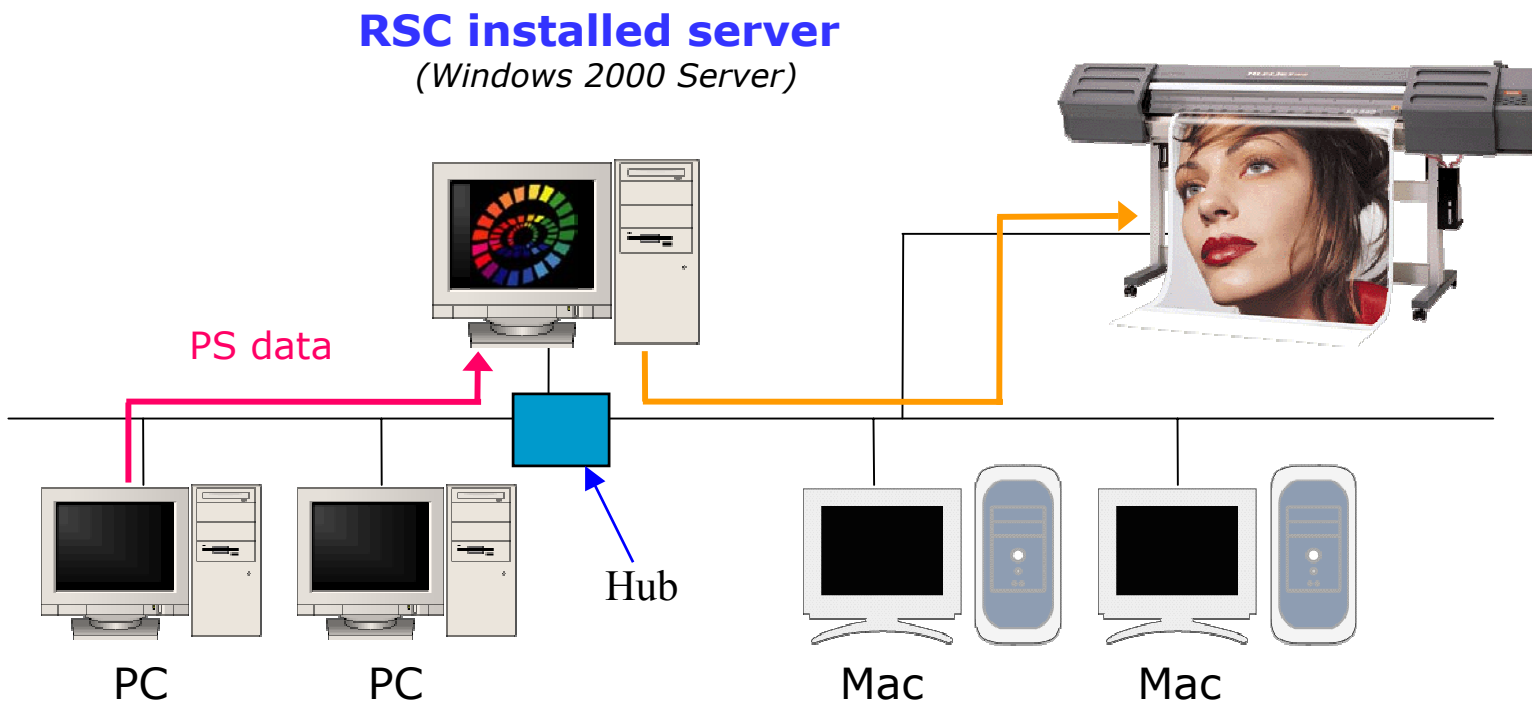
SC-540

SJ-540

SJ-740



◆ Office Environment



FJ-540

CJ-540

SC-540

SJ-540

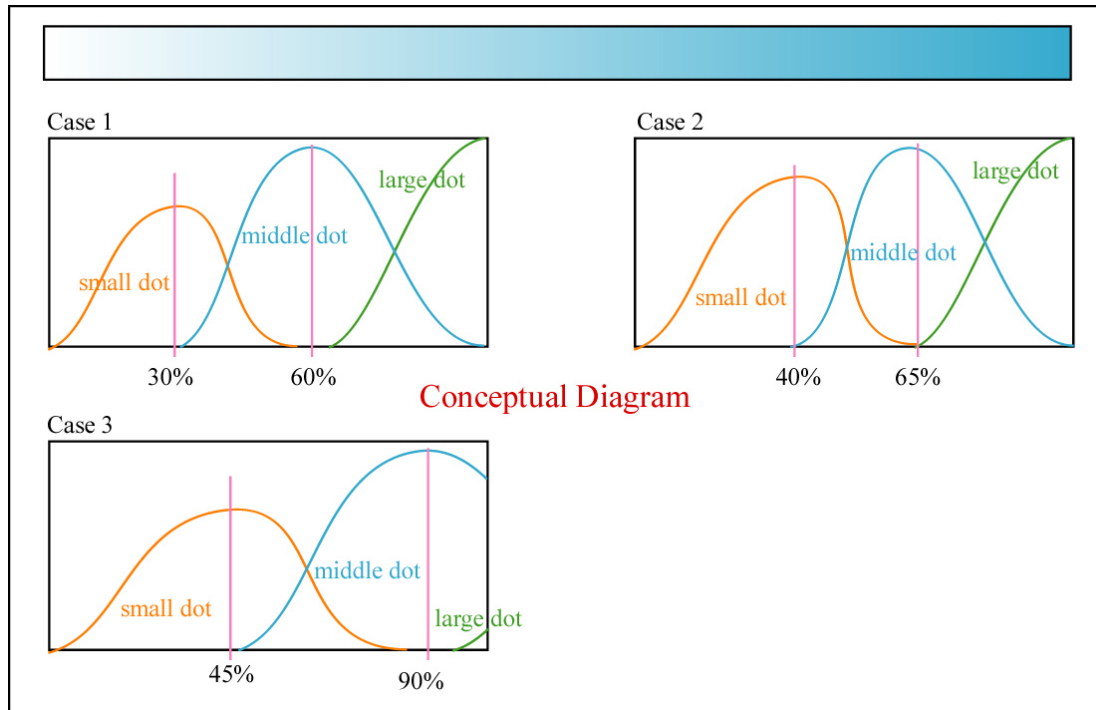
SJ-740



Halftone Customization

REFERENCE

- ◆ **Can precisely control variable droplet size thresholds**



Feature allows for color fidelity between different print modes and different media types

Reduces color shifts in grays and gradations

Offers better control of linearization process

FJ-540

CJ-540

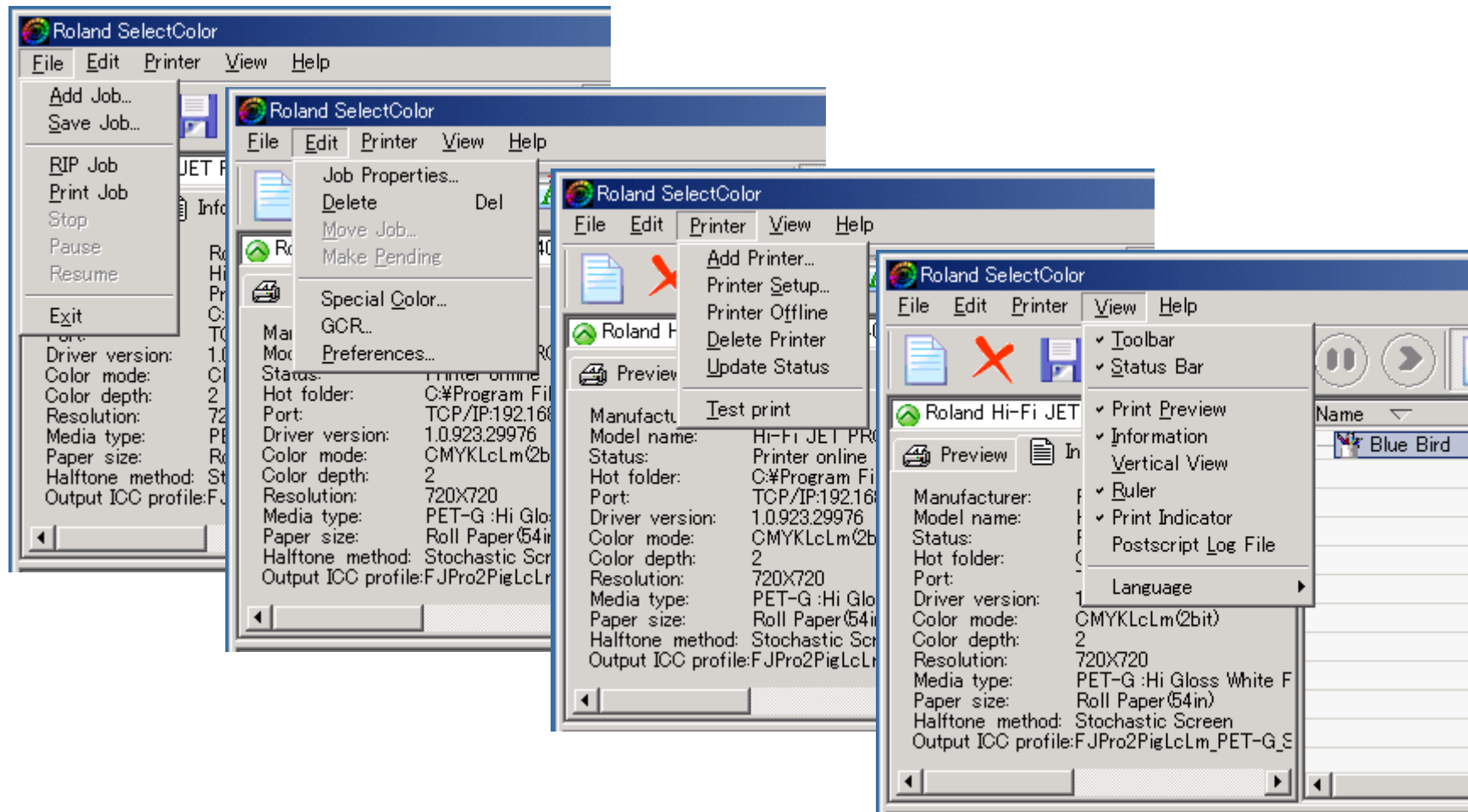
SC-540

SJ-540

SJ-740



RSC Menus





RSC Menus

Printer Setup

General RIP PS Nesting Port Driver

Manufacturer: Roland
Model Name: Hi-Fi JET PROII FJ-540
Printer Name: Roland Hi-Fi JET PROII FJ-540
Hot Folder: C:\Program Files\Roland SelectColor\ Browse...

RIP and Print after jobs received
 Auto rotate image
 Rip and Print at the same time
After Printing: Delete

Media Information
Roll Paper(54in)
137.160 cm 0.000 cm
0.305 cm 0.305 cm
0.305 cm 0.305 cm

OK Cancel Apply

Printer Setup

General RIP PS Nesting Port Driver

Automatic Print Option Selection

Media Type: PET-G :Hi Gloss White Film
Quality: Standard
Resolution: 720x720
Color Mode: CMYK LcLm(2bit)
Dithering: Stochastic Screen Edit...
Interpolation: Nearest
Density: none Edit...
Color Correction: ICC Profile
Output Profile: FJPro2PigLcLm_PET-G_Std.icm ...
Input Profile Use Embedded ICC Profile
USWebCoatedSWOP.icc
sRGB Color Space Profile.icm
DefGray.icm
 Enable Special Color Matching

OK Cancel Apply

Printer Setup

General RIP PS Nesting Port Driver

Overprint
 Use Embedded Halftone screen
Flatness: 0.20
Print pages

OK Cancel Apply



RSC Menus

Printer Setup [X]

General | RIP | PS | Nesting | Port | Driver

Enable Automatic Job Nesting

Time Condition

At 11:00:00

At 16:00:00

Interval 1 H 0 M

Media Length Covered 76.200 cm

Number of Jobs 4

OK Cancel Apply

Printer Setup [X]

General | RIP | PS | Nesting | Port | Driver

Port	Description
<input type="checkbox"/> FILE:	
<input type="checkbox"/> LPT1:	
<input type="checkbox"/> LPT2:	
<input type="checkbox"/> LPT3:	
<input checked="" type="checkbox"/> TCP/IP	

Port Parameter

IP Address:192.168.0.100
Port:9100

Configure...

OK Cancel Apply

Printer Setup [X]

General | RIP | PS | Nesting | Port | Driver

Use Driver Setting

Enable Calibration Auto Cut Paper

Print Direction

Unidirection Printing

Bi-direction Printing

Page Space 10 mm

Over Print 1

Drying Time 0 sec

OK Cancel Apply



RSC Menus

Job Properties

Layout RIP PS Driver Tiling Label

Paper Size
Roll Paper(54in)
137.160 cm 0.000 cm

Paper Margin
0.305 cm 0.305 cm
0.305 cm 0.305 cm

Size
40.640 cm 30.480 cm
200.00 %

Position
0.000 cm 0.000 cm
3 0.635 cm

Rip and Print at the same time
 Apply to entire job
After Print: Delete

Blue Bird

Job Properties

Layout RIP PS Driver Tiling Label

Automatic Print Option Selection

Media Type: PET-G :Hi Gloss White Film

Quality: Standard

Resolution: 720x720

Color Mode: CMYKLcLm(2bit)

Dithering: Stochastic Screen Edit...

Interpolation: Nearest

Density: Job Embedded Edit...

Color Correction: ICC Profile

Output Profile
FJPro2PigLcLm_PET-G_Std.icm

Input Profile Use Embedded ICC Profile
USWebCoatedSWDP.icm
sRGB Color Space Profile.icm
DefGray.icm

Enable Special Color Matching

Blue Bird

Job Properties

Layout RIP PS Driver Tiling Label

Overprint
 Use Embedded Halftone screen

Flatness: 0.20

Print pages 1 (Total 1 Pages)

Blue Bird



RSC Menus

Job Properties

Layout RIP PS **Driver** Tiling Label

- Use Driver Setting
- Enable Calibration Auto Cut Paper

Print Direction

- Unidirection Printing
- Bi-direction Printing

Page Space: 10 mm

Over Print: 1

Drying Time: 0 sec

Auto Cut Paper

Blue Bird

Job Properties

Layout RIP PS Driver **Tiling** Label

Paper Size: 137.160 cm x 0.000 cm

Image Size: 40.640 cm x 30.480 cm

Selected Tile: 0, 40.640 cm x 30.480 cm

All Tiles:

- 1/2 3, 40.640 cm x 1.270 cm
- 1/2 2, 40.640 cm x 30.480 cm

Reset

Blue Bird

Job Properties

Layout RIP PS Driver Tiling **Label**

- [Icon]
- Label all job together

Print label

- Printer Name
- File Name
- Separation
- Copies
- Date & Time
- Color Correction
- Note: Sample

- Media Type
- Quality
- Resolution
- Color Mode
- Dither Method
- Tile Position

Position: Bottom Width: 1.270 cm

- [Icon]

Blue Bird