

## Setting up a Braille Drill Job in EngraveLab 6.1

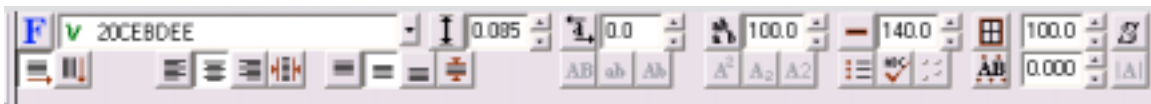
In this lesson, the steps to setup a Braille Drill job will be described. After setting up the default Braille font, an example of converting a line of text to Braille will be described. The final step is a basic description of how to setup an engraving driver to drill Braille dots.

### Setting up a default Braille font

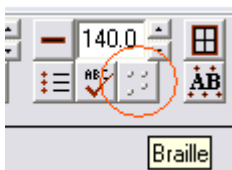
The first step is to setup the proper default Braille font. Start by choosing the **Text Compose** icon from the **Text Tools** flyout to the left of the workspace.



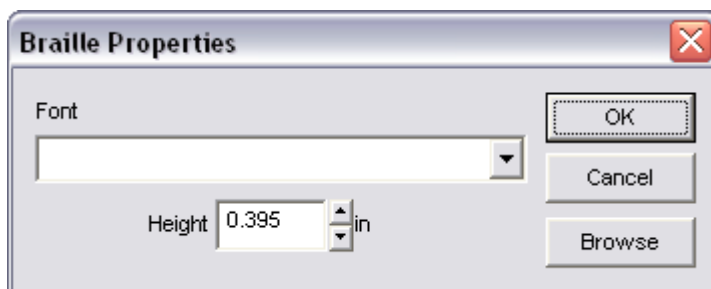
Next, single click within the Plate on screen. The **Text Compose** controls will be displayed in the SmartBar as shown below.



To set the default Braille font, single click with the Right Mouse Button on the **Braille** button

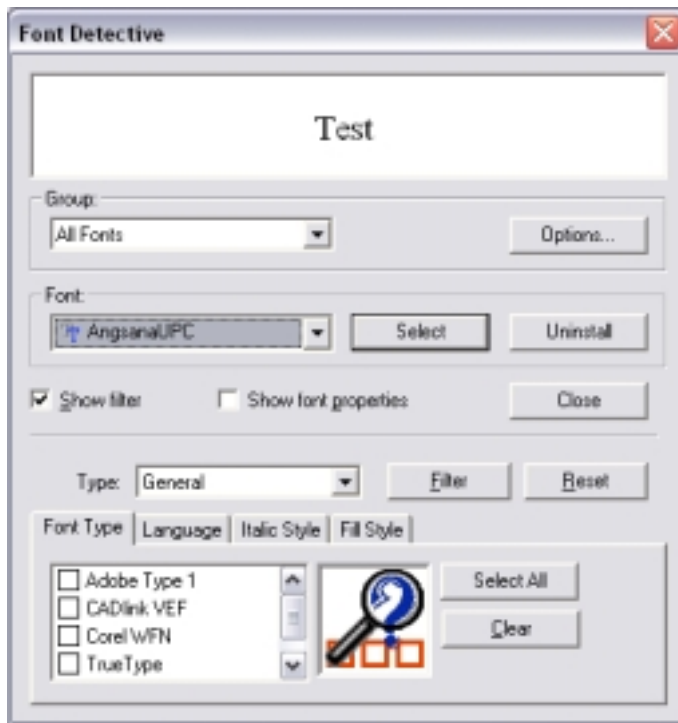


The **Braille Properties** window will open.

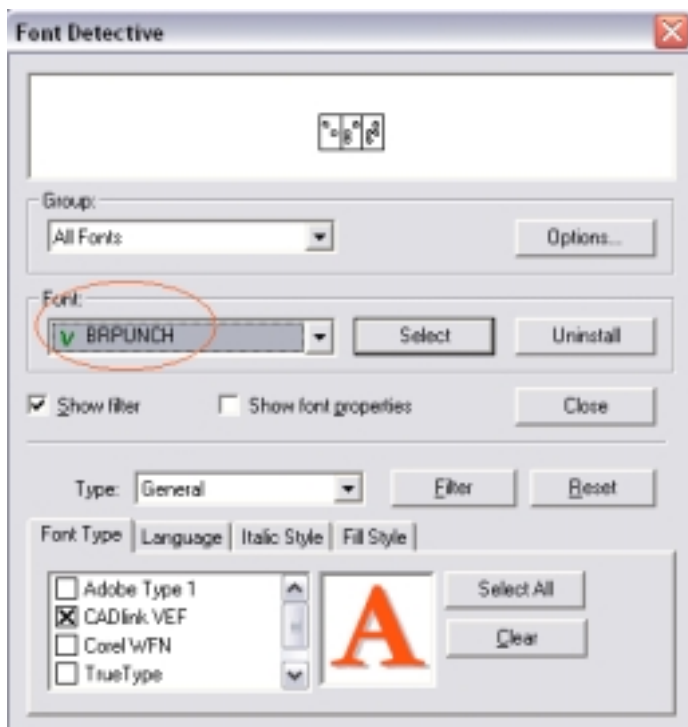


Click the **Browse** button, and the **Font Detective** window will open.

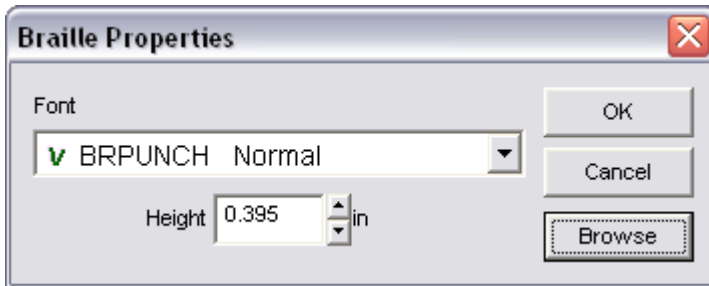
## Lesson 7 – Setting up a Braille Drill Job



From the **Font** drop down list, locate the font called BRPUNCH in the Font drop down list.



Click the **Select** button to close the **Font Detective**. The selected Braille font will display in the **Braille Properties** window.



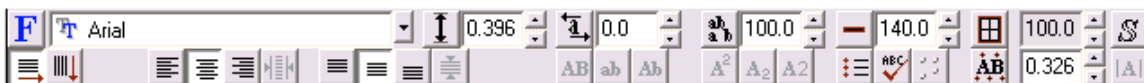
Click **OK** to close the **Braille Properties** window. BRPUNCH is now setup as the default Braille font.

## Converting a line of text to Braille

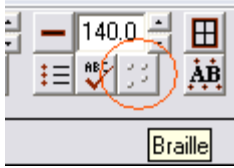
In EngraveLab, open the file called Braille.cdl.



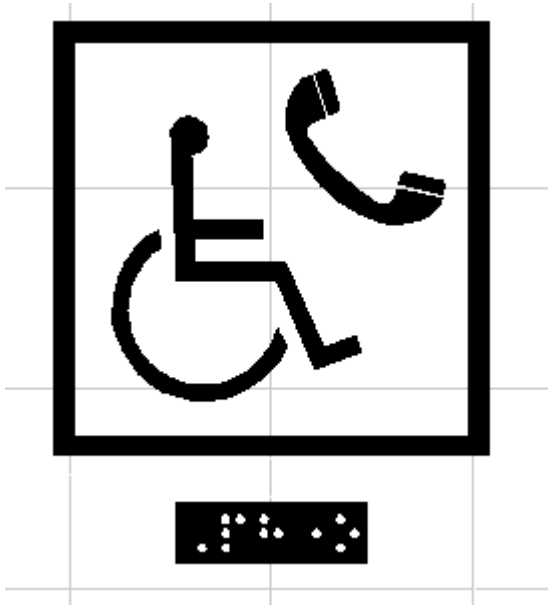
Single click on the word Phone. Next click on the **Edit** menu and select **Edit Text**. Note that the Smart Bar should display at the top of the EngraveLab workspace as shown below.



Left-Click on the Braille button.

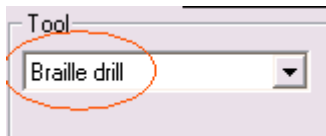


EngraveLab will convert the selected text to Braille. The resulting plate should look like the following.



### How to drill Braille dots on your rotary engraver

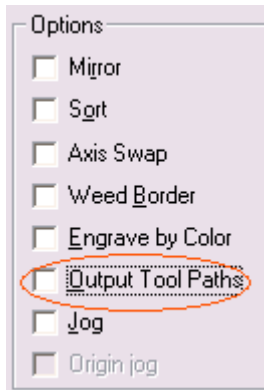
The BRPUNCH font is specifically designed to allow a drill operation for every “dot” in a Braille cell. To setup an engraving driver to drill Braille dots, click on the Engrave menu and then Engraving Defaults. The Output window will now open. Select the appropriate driver for your engraver. Once the appropriate driver is selected, click on the Tool option. Select the option called Braille Drill. NOTE that in the case of some drivers, the Tool option is called Braille Punch.



Note that not all engraving drivers have this option. Contact CADlink if the driver you want to use does not include the Braille Drill tool.

In the Options section of the Output window, make sure that the Output Tool Paths option is DISABLED.

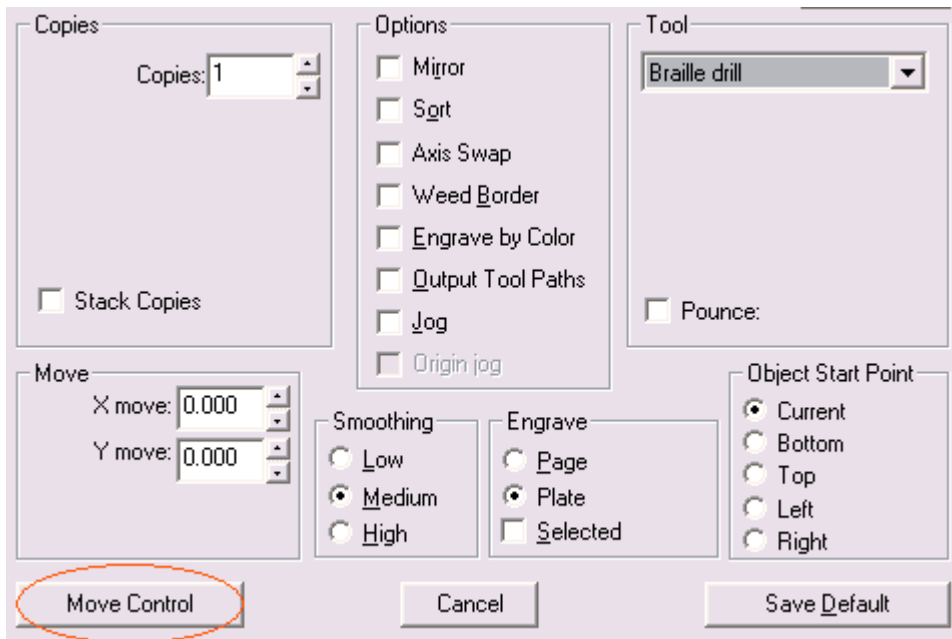
## Lesson 7 – Setting up a Braille Drill Job



In the Engrave section, make sure that the Plate section is enabled. Enabling the Plate option ensures that the position of the Braille dots as positioned on screen is respected when outputting to the engraving machine .

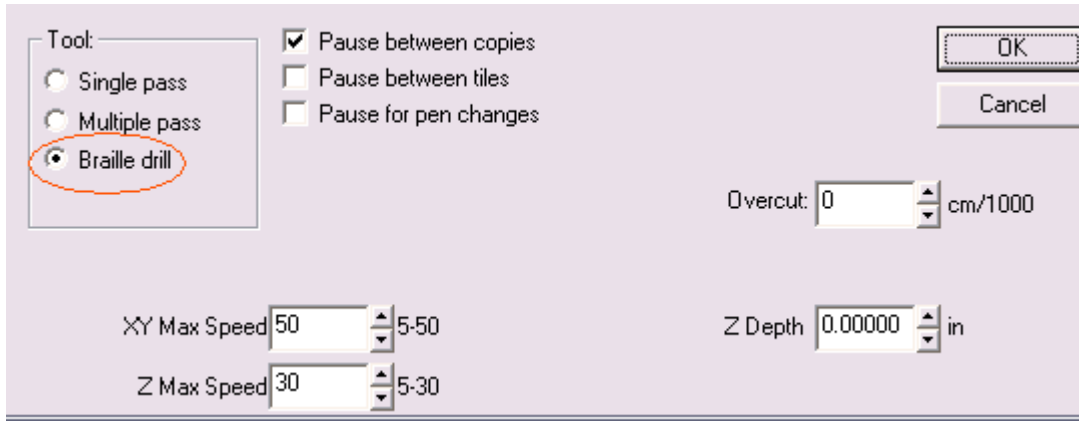


Certain engraving drivers support setting a depth for the drill operation from EngraveLab. Other drivers expect the depth of the drill operation to be set at the engraver. To set the Depth of the Braille Drill operation from the EngraveLab, select the Move Control button in the Output window.



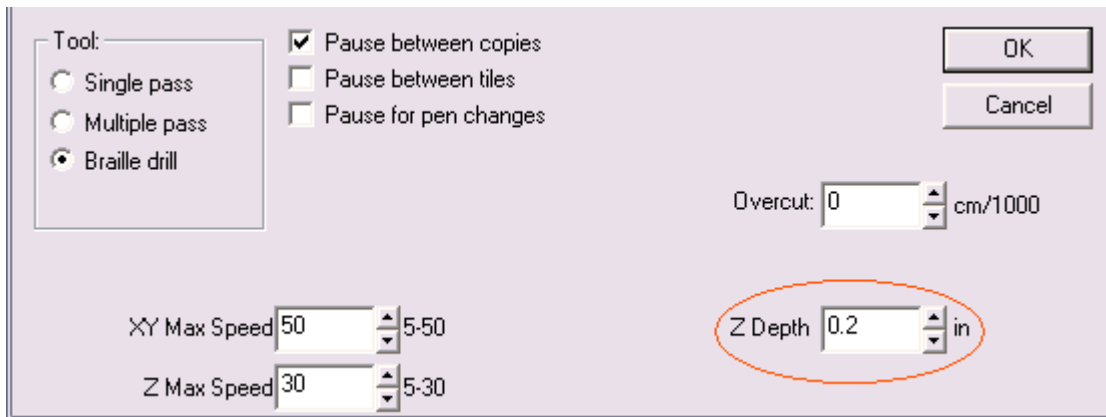
## Lesson 7 – Setting up a Braille Drill Job

In the Move Control window for the selected driver, make sure that the Braille Drill tool option is selected. NOTE that depending on the driver that is selected, the Move Control dialog may or may not look as shown below. However, the principles that are being discussed are still relevant.



The screenshot shows the Move Control dialog box. On the left, under the 'Tool:' section, three radio buttons are visible: 'Single pass', 'Multiple pass', and 'Braille drill'. The 'Braille drill' option is selected and circled in red. To the right of the tool options are three checkboxes: 'Pause between copies' (checked), 'Pause between tiles' (unchecked), and 'Pause for pen changes' (unchecked). In the top right corner are 'OK' and 'Cancel' buttons. Below the tool options, there are three spinners: 'Overcut:' set to 0 cm/1000, 'XY Max Speed' set to 50 (range 5-50), and 'Z Max Speed' set to 30 (range 5-30). The 'Z Depth' spinner is set to 0.00000 in.

Next, set the Z Depth value to be the desired depth of the drill operation.



This screenshot is identical to the previous one, but the 'Z Depth' spinner is now set to 0.2 in and is circled in red. The 'Braille drill' tool option remains selected.

Click on the OK button. Then click on the Save Default button in the Output window. You are now ready to send your job to your rotary engraver.

Congratulations on completing the Braille Drill tutorial for EngraveLab V6.1