

**trotec**<sup>®</sup>

*laser. marking cutting engraving*

# High Efficiency Cutting System **SP 1500**

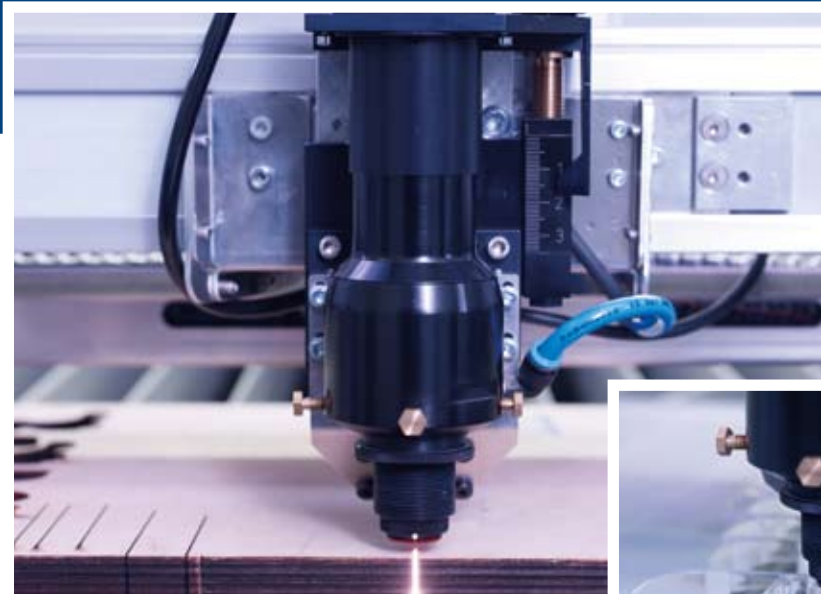
setting  
new  
standards



Working Area  
+ speed  
+ Productivity  
+ Life span  
= Profitability

# Profitability

## A Simple Calculation



### Raise your profits with SP1500 from Trotec!

- **Profitability**

The **SP1500** is the most profitable laser cutting and engraving system in its class. It combines highest productivity, a working area of a standard acrylic sheet size, highest system life span and lowest maintenance costs.

- **Safe and clean operation**

The **SP1500** has a unique housing design and meets the requirements of laser safety class 2. You will not need a special design to protect your employees, or a laser safety officer. As an added benefit, the self-contained system allows dust to be efficiently evacuated.

- **Global presence—now and in the future**

Innovation is our passion, and the customer is our focus here. Your productivity is most important to us.

With our global network of more than 80 Trotec distributors and service partners, we can guarantee maximum reliability and availability. All this to support your success – now and in the future.

- **Easy to use**

The SP1500 is suitable for many different applications. Use the driver's open software architecture for creating a layout in CorelDraw, Photoshop, etc.—simple, like operating your laser printer at the office.

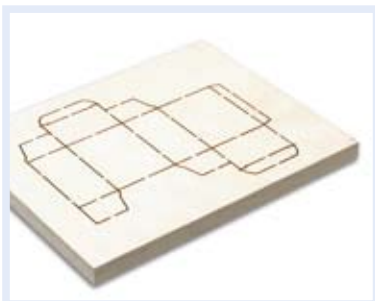
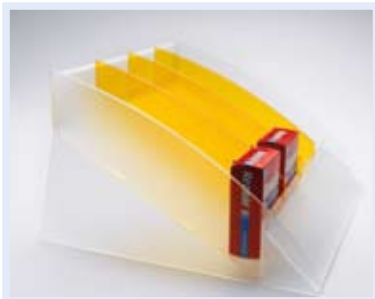
The CAD/CAM software **TroCAM™** is best for obtaining excellent cutting results. Only the **SP1500** is equipped with professional CAD/CAM software. Speed up the layout process, and don't worry about import filters.

- **First-class components**

The individual components like motion system, optics, electronics, working head and laser source feature highest quality and performance. The proven **InPack-Technology** protects all valuable components from dust and gases and ensures a long-term reliability and trouble-free operation.

**SP1500** stands for top quality with minimum maintenance. The base frame weighs 900 kgs and offers a robust, stable working area for laser cutting and engraving.

# Your requirements determine our planning strategy



## Manufacture of:

- architectural models
- automotive parts
- flexographic plates
- woodwork
- prototypes
- displays
- signs
- textile cutting
- gifts and miscellaneous articles
- templates
- type plates
- certificates
- light signs
- die boards
- key pads
- ... and many more

## All these materials are suitable for processing with the SP1500:

- acrylic
- coated metals (marking)
- anodized aluminum (marking)
- veneer
- fabric
- glass
- rubber
- wood
- cork
- plastics
- leather
- melamine
- nylon
- paper
- cardboard
- polyester
- foam
- silicone
- particle boards
- stone
- synthetics
- compounds
- vinyl
- ... and many more

# Technology:



• <b>Max. operating surface</b>	1500 x 1250 mm
• <b>Outside Dimensions</b>	2829 x 2000 x 1300 mm
• <b>Max. Material size</b>	1600 x 1600 mm
• <b>Max. operating height</b>	100 mm
• <b>Approx. weight</b>	900 kg
• <b>Laser power</b>	60 W up to 400 W "Sealed-Off" CO <sub>2</sub> laser
• <b>Operating speed</b>	100 cm/sec.
• <b>Acceleration</b>	1g
• <b>Weight</b>	1200 kg
• <b>Accuracy</b>	+/- 0,1 mm
• <b>Settable accuracy</b>	Encoder +/- 0,001 mm
• <b>Static repeatable accuracy:</b>	<+/- 0,15

# Solid Base Awesome Possibilities



## **Trotec IPC—Intelligent Path Control™**

This new laser control module allows the dynamic adjustment of speed and acceleration depending on the cutting path. This reduces processing time and increases the cutting results.

## **Enclosed working cabin with Trotec—“InPack Technology”**

A fully enclosed working cabin combined with our patented **InPack-Technology** ensures an optimum of protection for dust- and gas-intensive applications like acrylic or wood cutting. This guarantees a higher-than-average life expectancy and minimum maintenance costs. The additional dust cover offers additional protection for motors and electronics when processing dust-intensive materials.

## **Extraction on working head**

An extraction hose is mounted directly on the working head and removes dust and smoke from the material surface during processing

## **Air-flushed optics**

All optic elements are air-cooled, providing for maintenance-free operation and long life.

## **Gas kit**

Select between two gases for processing (e.g. compressed air, N<sub>2</sub>)

## **Pass-through**

Enables processing of very long and bulky parts. The feed-through feature makes the SP1500 a laser safety class 4 device.

## **i-Cut® Vision System**

The **i-Cut®** vision system uses register marks to compensate any kind of distortion on printed materials.

## **JobControl®**

The intuitive Trotec **JobControl®** software allows the user to perform engraving and cutting jobs quickly and precisely.

## **TroCAM™ Software**

Utilize **TroCAM™** software for cutting jobs. A basic and an advanced version of TroCAM are available.

## **Vacuum table**

Thin and light materials that tend to lie unevenly on the base can be engraved, cut or marked in combination with the vacuum table

## **Exhaust system**

The exhaust system evacuates dust and vapors created when operating the laser. The exhaust system guarantees an uninterrupted, safe and reliable laser operation for many years to come.

Trotec offers a wide variety of suction systems—from simple ventilators to high-tech filter systems.

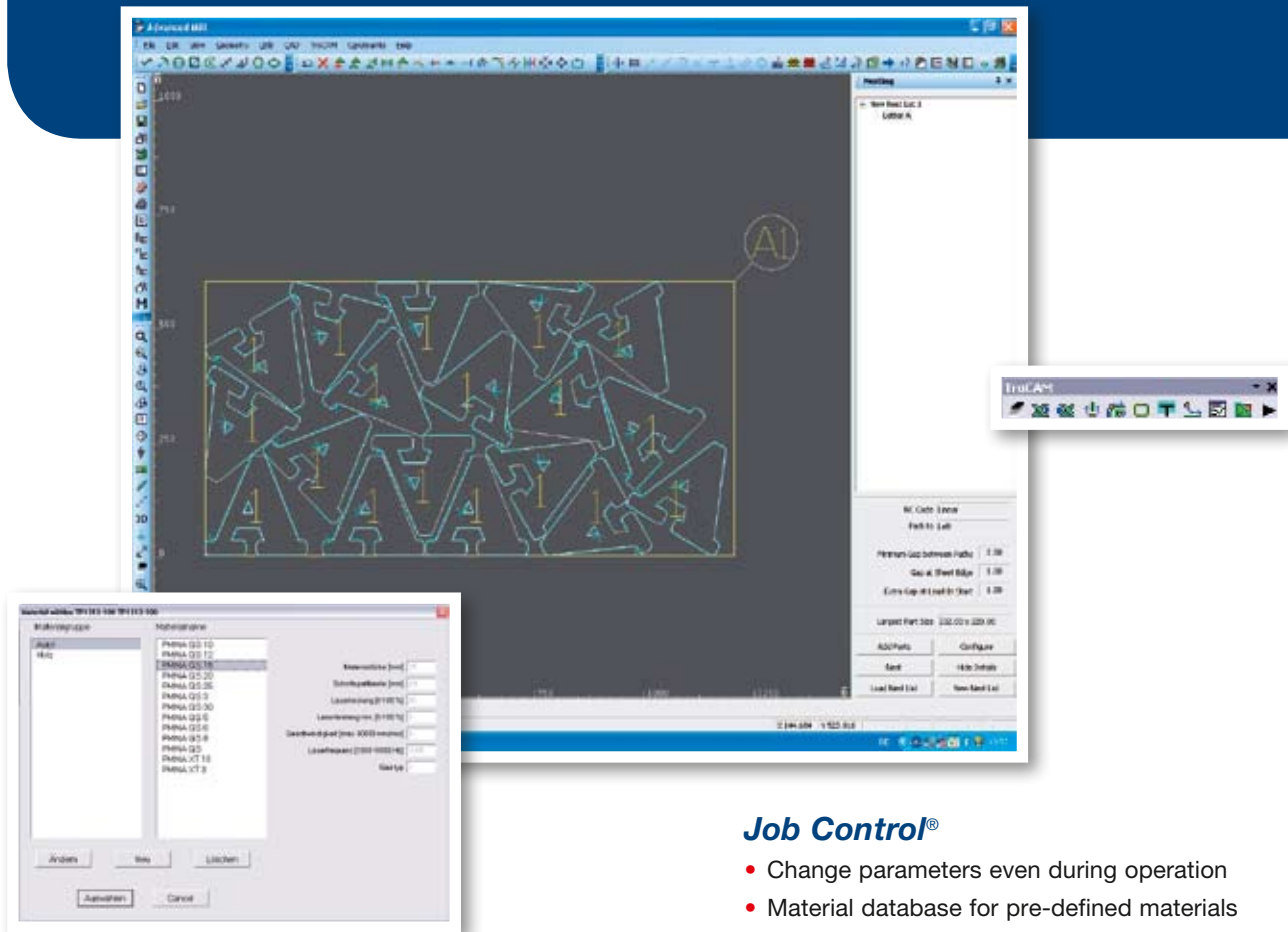
Please ask our specialist to find the ideal system for your application.

## **Cutting table**

Anodized aluminum fins lock in place independently.

They can be replaced by acrylic fins to assure reflection-free cutting.

# Smart Software for Sophisticated Applications



Trotec provides choice and flexibility when selecting your software for laser operation. Select **TroCAM™**, a professional CAD/CAM software and **JobControl**, an innovative solution for project management.

An added benefit: you are not limited in your choice. Use **TroCAM™** for cutting tasks today, and **JobControl®** for fine detail engraving tomorrow.

Detailed information can be found in the **TroCAM™** and **JobControl®** brochures.

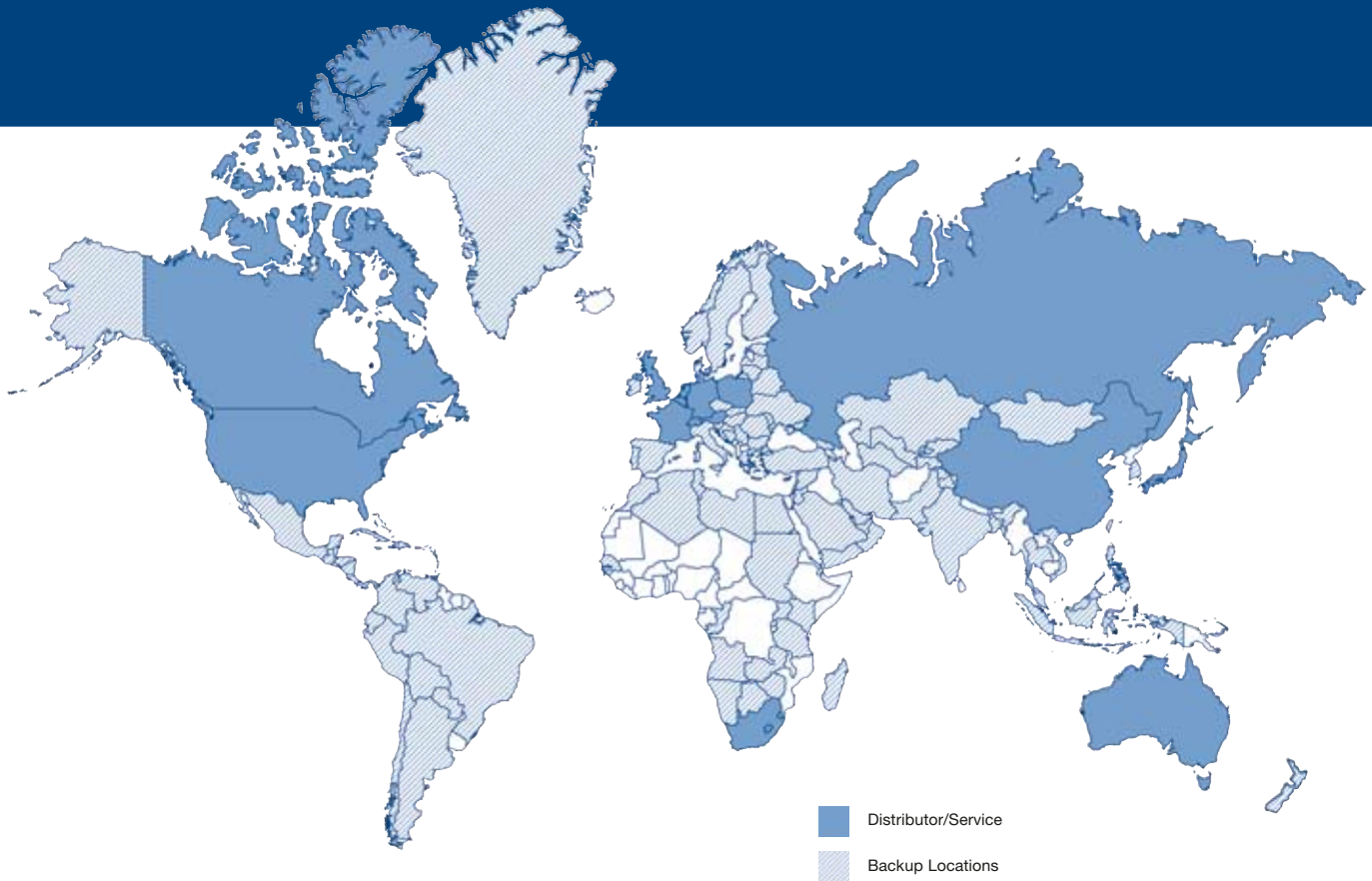
## **Job Control®**

- Change parameters even during operation
- Material database for pre-defined materials
- Precise positioning with markers
- Job history for calculating customer orders with absolute accuracy
- Easily repeat all cutting and engraving orders
- Telediagnostic services and remote assistance

## **TroCAM™**

- Professional CAD/CAM software including module for all cutting processes
- Laser operation with postprocessor
- Different start and stop paths for perfect cutting lines
- Nesting module for automatic or manual nesting to best save material
- Preview process sequencing
- Different selections for cutting lines (center, internal, external, change, etc.)
- Correction of cutting width for exact material dimension

# Global Play – Local Support.



Trotec lasers are being used worldwide in over 90 countries. We have in the field experience with thousands of systems. This clearly underscores our technical know-how and shows that our customers trust us.

Our Trotec service partners in over 80 countries are being trained on a continuous basis. This is why the Trotec laser systems can be professionally serviced at location.



In addition, the **JobControl**® software incorporates the unique feature laser system evaluation. This means fast diagnostics and remote service in real time.

## Checklist for purchasing your laser system:

- **Does the laser have a self-contained safety system?**  
Please consider the additional cost for training laser safety specialists and special installation requirements to protect operators.  
*The SP1500 has everything!* This means: no added cost to you.
- **Is the laser suitable for cutting AND engraving?**  
*The SP1500 can do both!* For you this means: other lucrative business areas. Here, Trotec systems are a perfect match.
- **Does standard delivery include professional CAD/CAM software?**  
Please consider the added cost of software and the required internal tests you will need to conduct to determine compatibility.  
*The SP1500 has it!* For you this means: saved money, time, and extra stress.
- **How much experience does the laser system supplier have?**  
The quality of laser systems is usually revealed when they have been operating intensively for some time.  
*Trotec can do it!* For you this means: you will benefit from know-how and experience gained from thousands of installed systems.
- **What happens if something goes wrong?**  
Is a service partner readily available?  
*Trotec has the service you desire!* For you this means: remote service via our network of 80 service partners worldwide to guarantee immediate support.

Linzer Str. 156  
A-4600 Wels  
Tel. +43 / 72 42 / 239-7002  
Fax +43 / 72 42 / 239-7380  
trotec@troteclaser.com  
www.troteclaser.com

**trotec**<sup>®</sup>  
laser. marking cutting engraving