

Pulsed Ytterbium Fiber Laser

SpeedMarker

F10 and F20



- Air-cooled
- Maintenance free
- Smallest installation dimensions
- Excellent beam quality
- Inline power measurement
- Image processing system

Worldwide Leading Laser Engraving Technology

OPTIRAY

trotec[®]
laser engraving technology

Trotec is your competent partner for engraving, cutting and industrial marking with laser technology.

Marking of products or components has become an indispensable aspect of modern manufacturing. This is particularly down to quality assurance requirements demanding traceability or quite simply reflects the wishes of many manufacturers to have their own products identified unmistakably as originals.

The **Trotec SpeedMarker** galvanometer system was developed specially with a view to integrating product marking into existing manufacturing processes. The system can easily be integrated in existing plants thanks to its small dimensions. It requires no maintenance and can be extended to include power measurement and inline image processing systems as optional extras.

The **SpeedMarker F Fiber Laser** performs all applications which you might expect from an Nd:YAG laser with absolute precision.

Trotec doesn't merely offer you the opportunity to save money compared to traditional marking methods. You will also find that your markings will last forever. Markings are applied extremely quickly and contact-free.

The control software is a particular highlight of the system. It is easy to use and fully compatible with your existing systems.

Contact us to discuss your marking requirements and specific optimization potential for your manufacturing needs.

Technical data

System	F10 (MF10LQE)	F20 (MF20LQE)
Laser type:	Ytterbium fiber laser	
Max. output power:	10 W	20 W
Max. pulse energy:	0,5 mJ	1,0 mJ
Wavelength:	1062 nm	
Beam quality:	M ² = 1,4	
Pilot laser:	635 nm (Class 1)	
Operating mode:	pulsed, 20 – 100 kHz	
Ambient air temperature:	5°– 38°C / 41°– 100° F	
Relative humidity:	15% – 90%	

Mechanical dimension (W x H x L inch / mm)

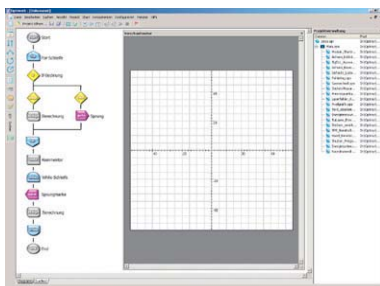
Marking head:	5.47 x 5.47 x 13.78" / 18,7 lb 139 x 139 x 350 mm / 8,5 kg	5.47 x 5.47 x 19.69" / 26.4 lb 139 x 139 x 500 mm / 12 kg
Control unit 19":	17.32 x 6.97 x 17.72" / 46.2 lb • 440 x 177 (4HE) x 450 mm / 21 kg	
Industrial PC 19":	17.32 x 6.97 x 17.72" / 37.4 lb • 440 x 177 (4HE) x 450 mm / 17 kg	
Integration keyboard 19":	17.32 x 1.69 x 16.73" / 13.2 lb • 440 x 43 (1HE) x 425 (429) mm / 6 kg	
Integration monitor 19":	17.32 x 13.98 x 7.87" / 11 lb • 440 x 355 (8HE) x 200 mm / 5 kg	

Electrical specifications:

Power input:	750 W	900 W
Electrical supply:	100 – 240 V AC 50/60 Hz	

Marking field configurations:

Focal length:	F = 100 mm	F = 160 mm	F = 254 mm
Working area:	2.76 x 2.76" / 70 x 70 mm	4.33 x 4.33" / 110 x 110 mm	7.09 x 7.09" / 180 x 180 mm
Working distance typ.:	4.626" / 117,5 mm	7.65" / 194,3 mm	13.56 / 344,4 mm
Processing speed:	236" / 6000 mm / sec.	378" / 9600 mm / sec.	591" / 15 000 mm / sec.



User-friendly laser control program for Windows 2000/XP to ensure flexible set-up of marking tasks and system functions



Desktop package



OEM package



OEM package II
system integration
including exhaust unit

Lilienthalallee 7, 80807 München
Tel. +49 (0) 89 / 322 99 00, Fax. +49 (0) 89 / 322 99 077
trotec@trotec.net
www.trotec.net

trotec[®]
laser engraving technology