

# Screen Printing from the Roland CAMMJET

## Overview

### *When To Use This Guide*

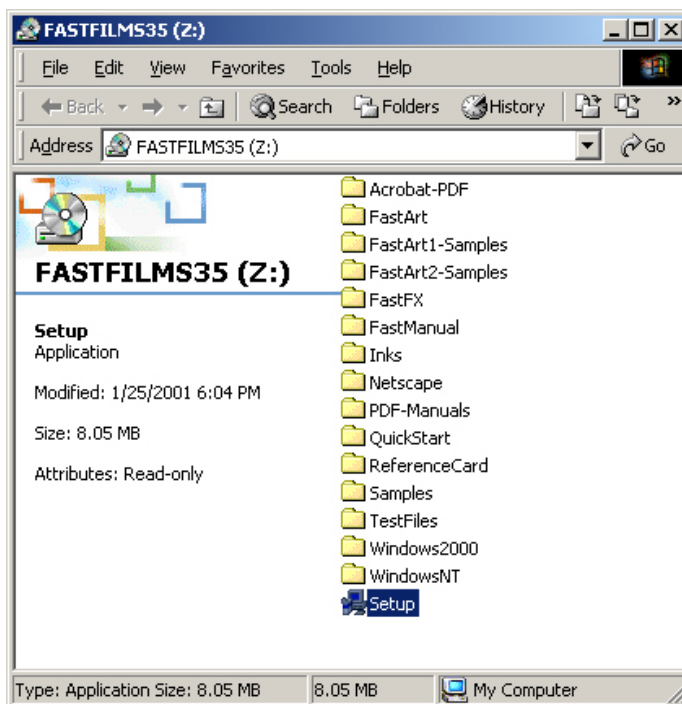
This quick reference guide is designed to explain the process of creating film positives using the Roland CAMMJET. To complete this project you will need to install Adobe Photoshop 6 image editing software, FastFilms separations software, and the PhotoScript Six RIP driver. Each of these programs is an essential element to complete the screen print workflow. The Fast Films Photoshop plug-in is designed to create spot color channels. The PhotoScript Six Rip program will print the image from Photoshop with the proper settings such as frequency and screen angle.

NOTE: This guide will only use Photoshop 6 as an example. If you own Photoshop version 4, 5, or 7 please refer to the Fast Films Manual for instructions.

## FastFilms Photoshop Install

### Installation

1. Insert FastFilms CD.
2. Locate and launch the **Setup.exe** program within the Install CD.



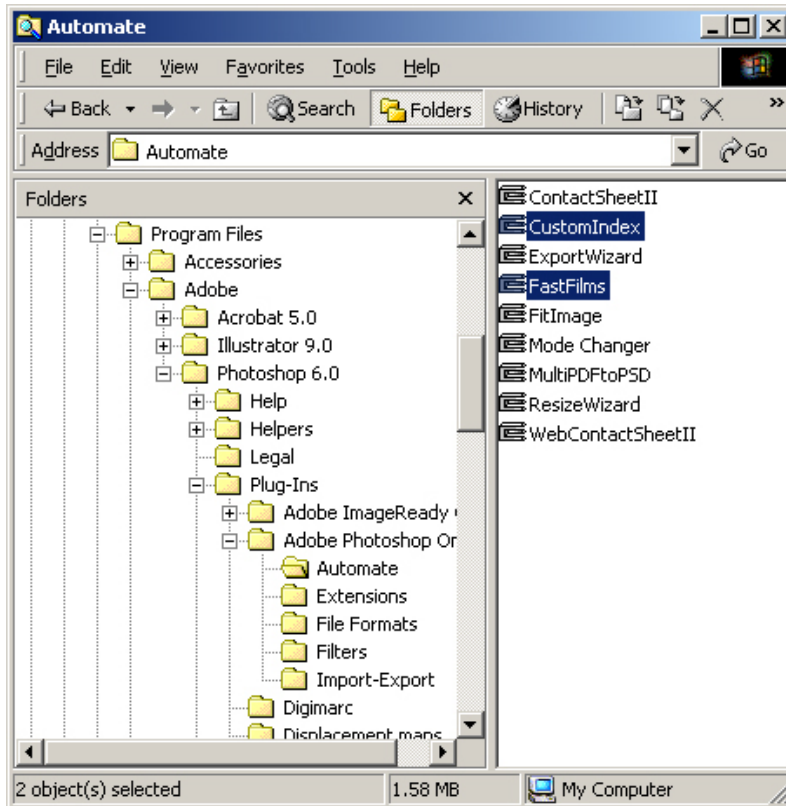
Launch the Setup program from the FastFilms Install CD.

3. Select English and follow the setup instructions.

# FastFilms Photoshop Install (cont'd)

## Configuration

1. Locate the following folder:
  - a. **Photoshop/Plug-Ins/Adobe Photoshop Only/Automate**
2. Check that **CustomIndex.8li** and **Fastfilm.8li** files are located in this **Automate** folder.



Check that "CustomIndex.8li" and "Fastfilm.8li" are both inside the Automate Folder.

You can find this folder within Program Files/Photoshop/Plug-Ins/Adobe Photoshop Only.

3. If they are not, drag them from the Fast Films folder into the **Automate** folder.

## Additional Windows 2000 Procedure

1. Locate the following folder:
  - i. **WINNT/system32/drivers**
2. Move the file **TPkd.sys** to this folder.

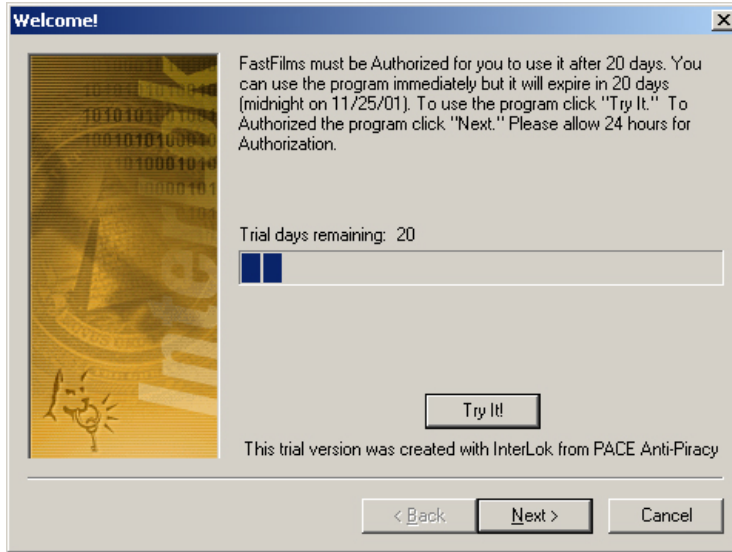
## Additional Windows XP Procedure

1. Locate the following folder:
  - i. **Windows/system32/drivers**
2. Move the file **TPkd.sys** to this folder.

# FastFilms Photoshop Install (cont'd)

## Unlocking FastFilms

1. Launch Photoshop 6.0.
2. A welcome screen will appear.
3. You have two options, click **Try It!** or click **Next**.



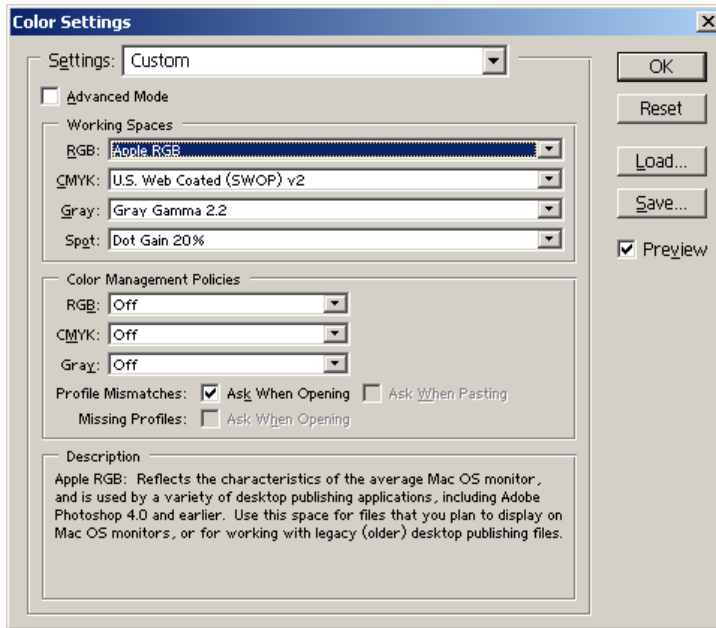
Click **Try It!** to start a 20 day trial period.  
Click **Next** to start the registration process.

4. Clicking **Try It!** will start a 20 day trial period and allow you to use FastFilms immediately.
5. Clicking on **Next** will begin the FastFilms unlocking procedure.
  - ii. Copy and email the words you find to [support@fastfilms.com](mailto:support@fastfilms.com).

# FastFilms Photoshop 6 Setup

## Setting Photoshop 6 RGB Settings

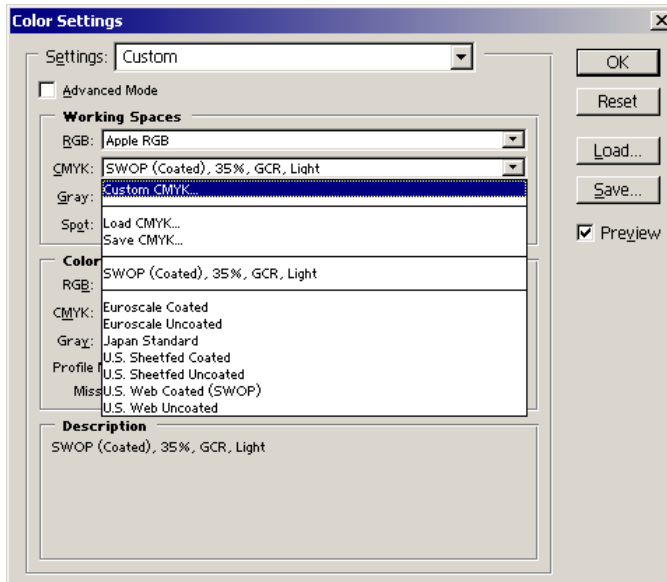
1. With Photoshop 6 open, locate **Color Settings (Edit>Color Settings)**.
2. Set **RGB** to **Apple RGB**.



Select "Apple RGB" as your RGB Working Space.

## Setting Photoshop 6 Dot Gain Settings

- 1) Set **CMYK** to **Custom CMYK...**

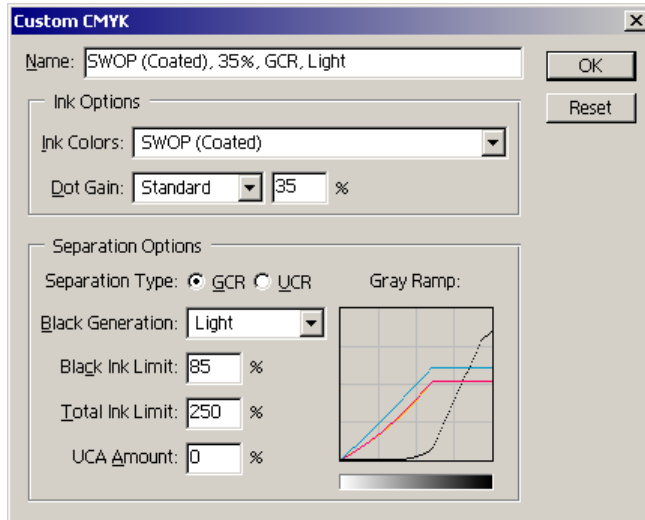


Select "Custom CMYK" as your CMYK Working Space.

## FastFilms Photoshop 6 Setup (cont'd)

### Setting Photoshop 6 CMYK Settings (cont'd)

1. This will bring up **CMYK Setup**.
2. Choose **SWOP (Coated)** for your **Ink Color**.
3. Choose **35%** for your **Dot Gain**.



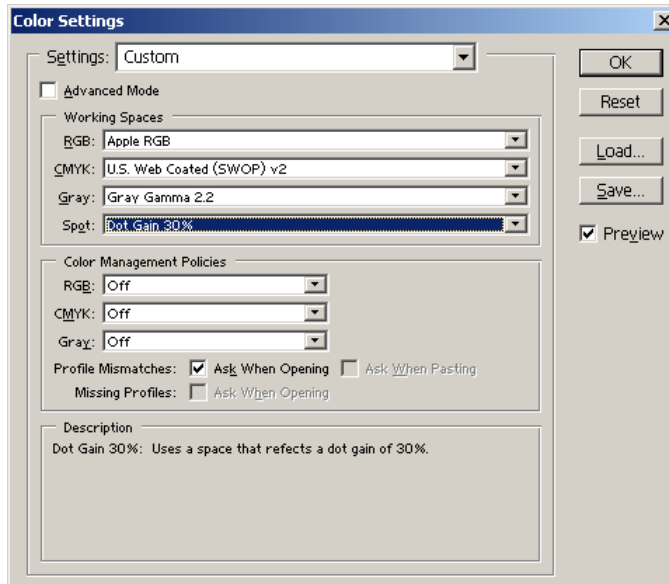
Choose "SWOP (Coated)" for Ink Color.

Choose "Standard 35%" for Dot Gain.

4. Click **OK**

### Setting Photoshop 6 Spot Settings

1. Set your **Spot** setting to **Dot Gain 30%**.



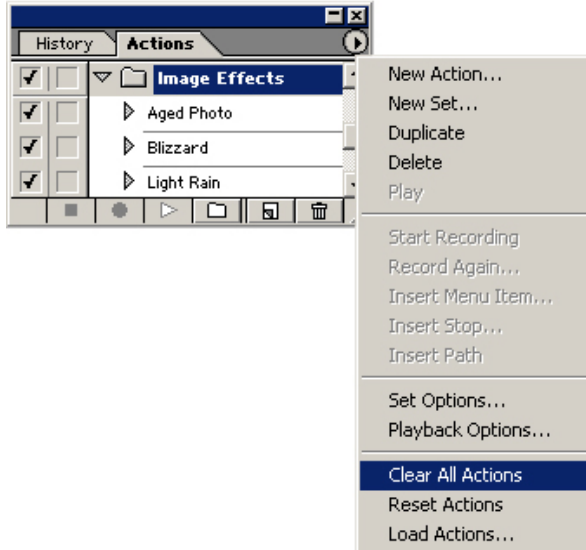
Select "Dot Gain 30%" for Spot Setting.

2. Click **OK**

## FastFilms Photoshop 6 Setup (cont'd)

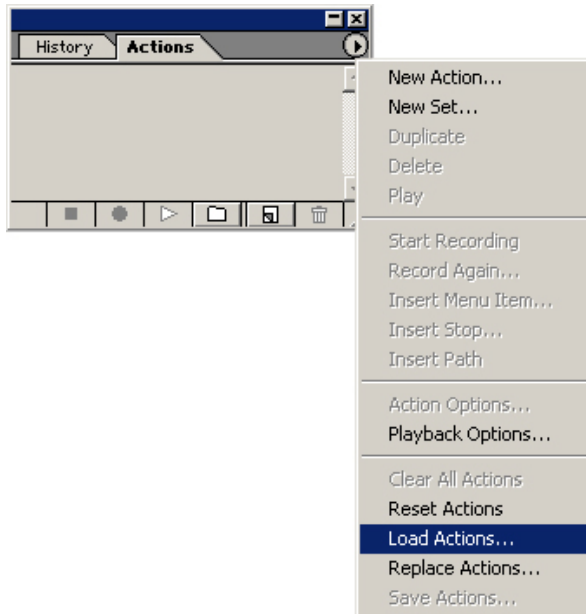
### Load FastFilms into Actions Palette (cont'd)

1. With Photoshop 6 open, locate **Show Actions** (**Windows>Show Actions**).
2. Select the arrow in upper right.
3. Scroll down and select **Clear Actions**.



Clear any previous actions by selecting "Clear All Actions" from the drop down menu.

4. Reselect the arrow in upper right.
5. Scroll down and select **Load Actions**.

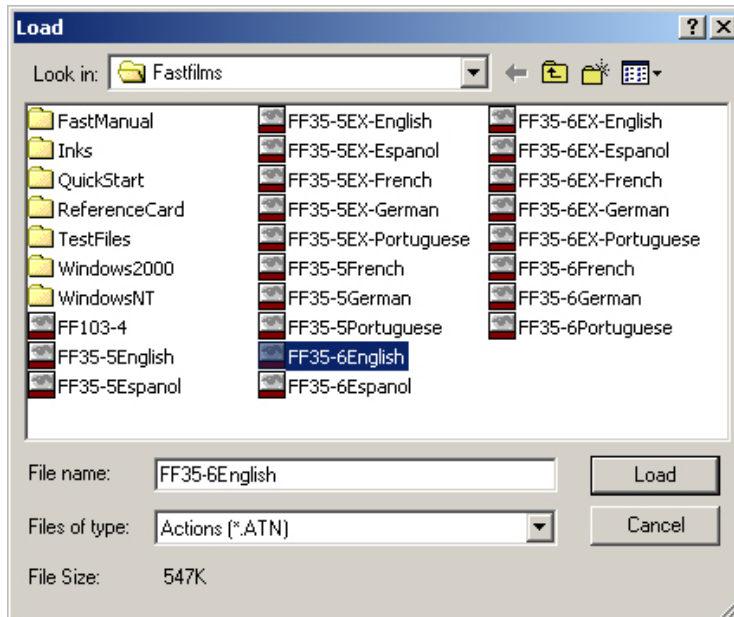


Select "Load Actions" from the drop down menu.

## FastFilms Photoshop 6 Setup (cont'd)

### Load FastFilms into Actions Palette (cont'd)

6. Within the Load Dialog Box, navigate to the FastFilms folder.
7. Select the file **FF35-6English** and click **Load**.

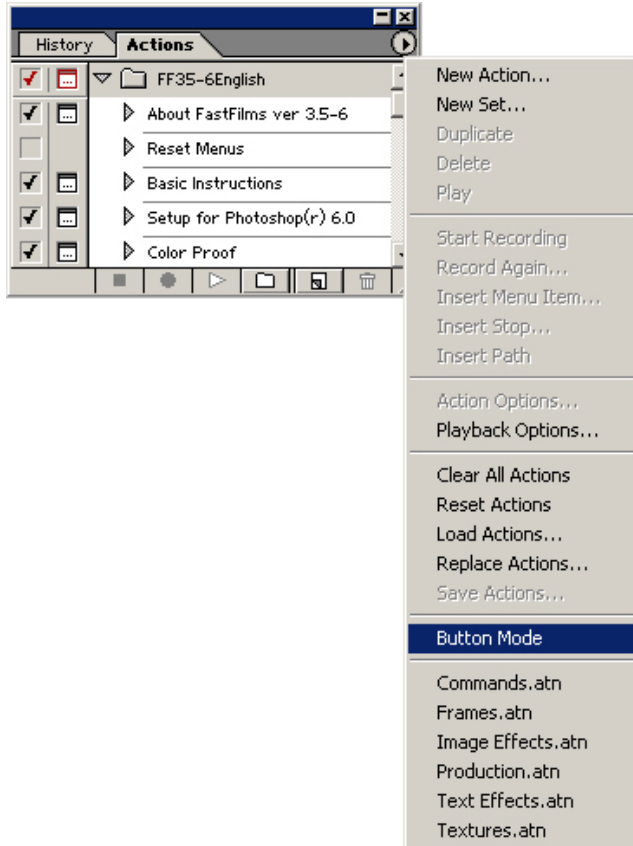


Locate the “FF35-6 English” file and click “Load”.

# FastFilms Photoshop 6 Setup (cont'd)

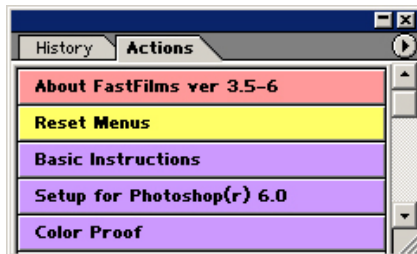
## Selecting Button Mode

1. For FastFilms to work correctly, you must set **Actions** to **Button Mode**.
2. Select the arrow in upper right.
3. Scroll down and select **Button Mode**.



Select "Button Mode" from the drop down menu.

4. Your Actions Palette should now look similar to the picture below.



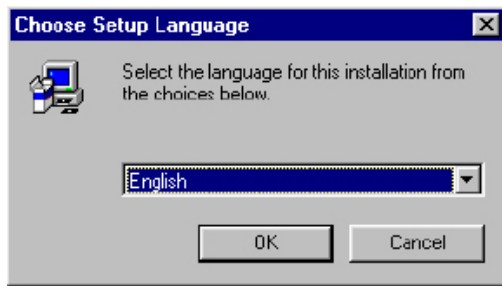
Your Actions Palette should now have a distinctive multicolor button look.



# PhotoScript Install

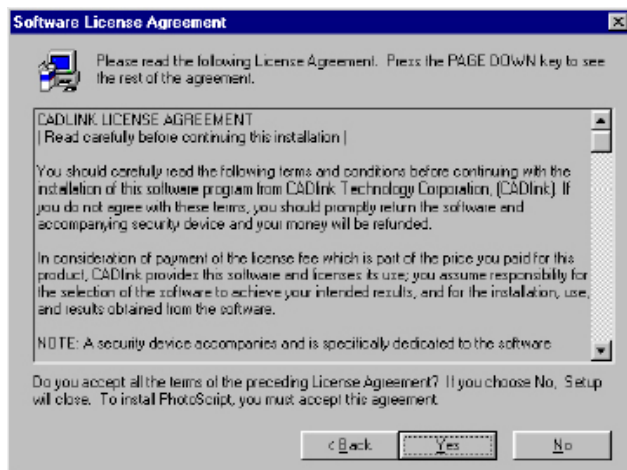
## Installation

1. Insert PhotoScript CD.
2. Place the PhotoScript Hardware Key onto your Parallel or USB Port.
3. When the PhotoScript Six CD is placed in the CD drive, most Windows workstations will automatically launch the setup program. If this is not the case, then open the Control Panel from the Start menu, and then use “Add and Remove Programs” to install PhotoScript.
3. Choose **English** to begin the installation process.



Select “English”.

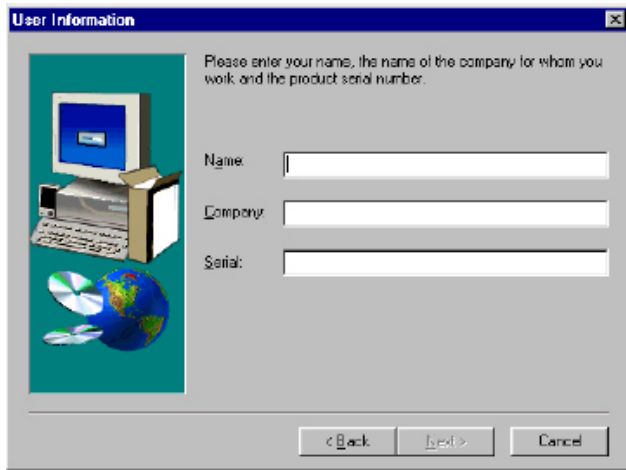
4. Agree to the licensing agreement



Agree to the licensing agreement by clicking “Yes”.

# PhotoScript Install (cont'd)

5. Input your User Information, including the serial number from your hardware key.



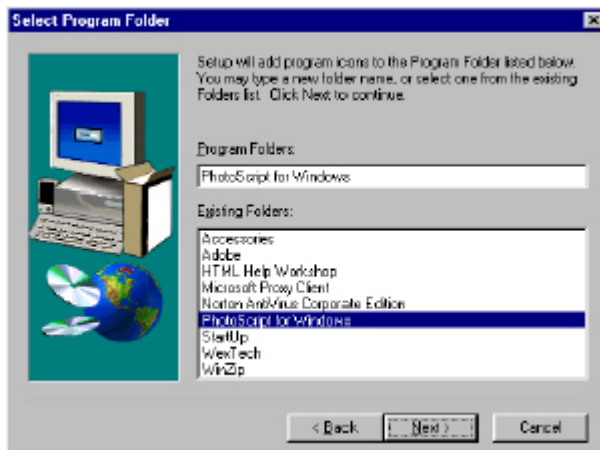
**Input your Name, Company and the serial number found on your hardware key.**

6. Click **Next** to select the default location for the PhotoScript Six files.



**Click "Next" to install PhotoScript in its default location.**

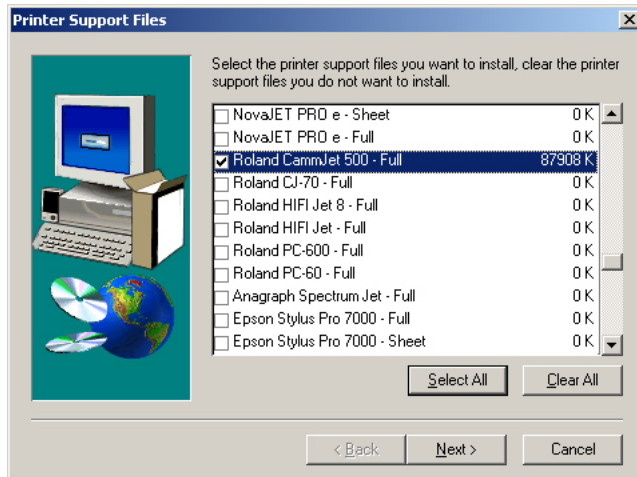
7. Click **Next** to select where PhotoScript will show up in the Start Menu.



**Click "Next" to select the default location for PhotoScript in the Start Menu.**

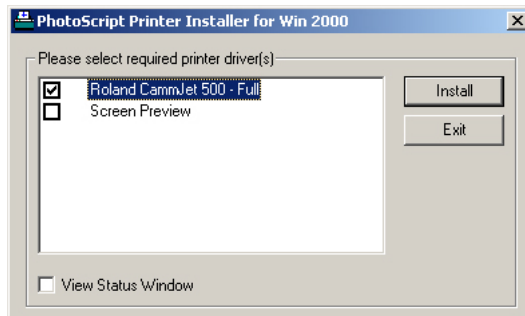
# PhotoScript Install (cont'd)

8. Check **Roland CammJet 500 – Full** support files and click **Next**.



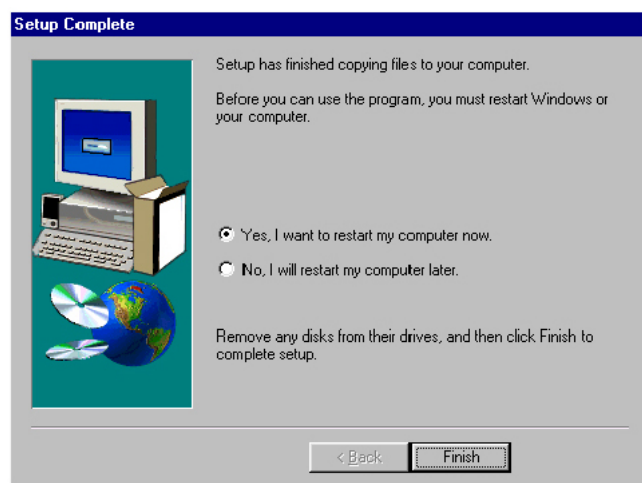
**Check “Roland CammJet 500 – Full” to install the correct support files.**

9. Install the PhotoScript printer driver by checking **Roland CammJet 500 - Full** then click **Install**.



**Select “Roland CammJet 500 – Full” then click “Install”.**

10. Restart your workstation at the prompt.

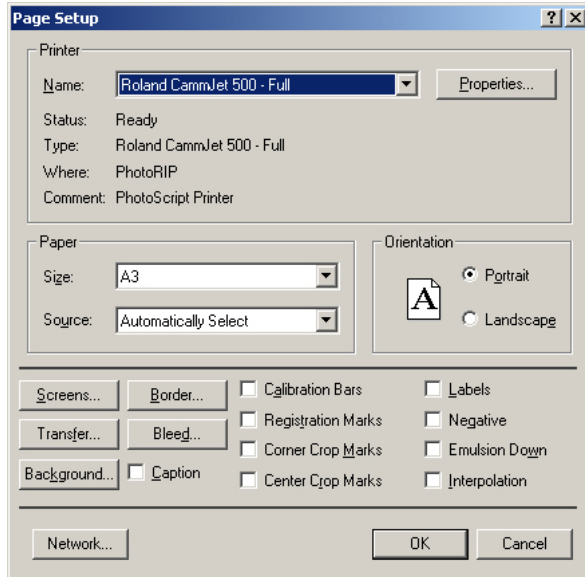


**You should be prompted to restart your workstation. If you are not prompted, please restart manually.**

# Configuring PhotoScript

1. Launch Photoshop 6.
2. Open Page Setup (File>Page Setup) .
3. Select your new PhotoScript print driver in PhotoShop 6 Page Setup by selecting **Roland CammJet 500 – Full**.

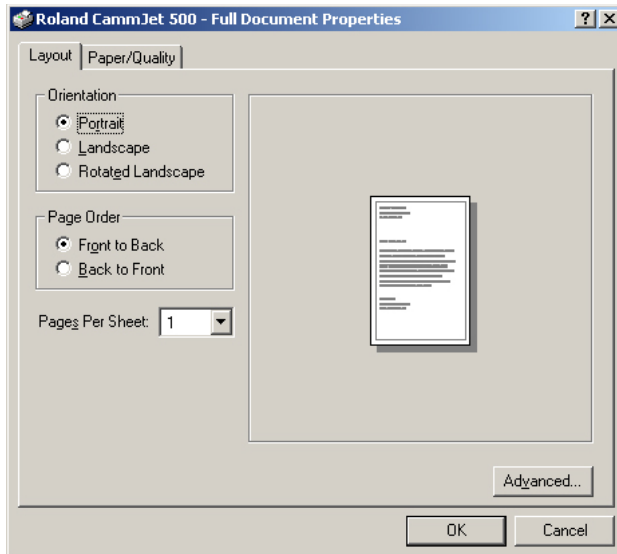
There may be another print driver with a similar name. Make sure to check that **Where:** is set to “PhotoRIP” and **Comment:** is set to “PhotoScript Printer.”



Select “Roland CammJet 500 – Full” in the Page Setup.

Click on the “Properties” button.

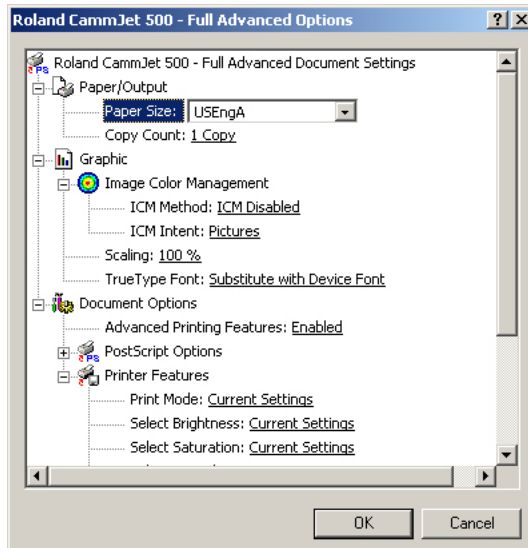
4. Click on the **Advanced** Button.



Click on the “Advanced” button.

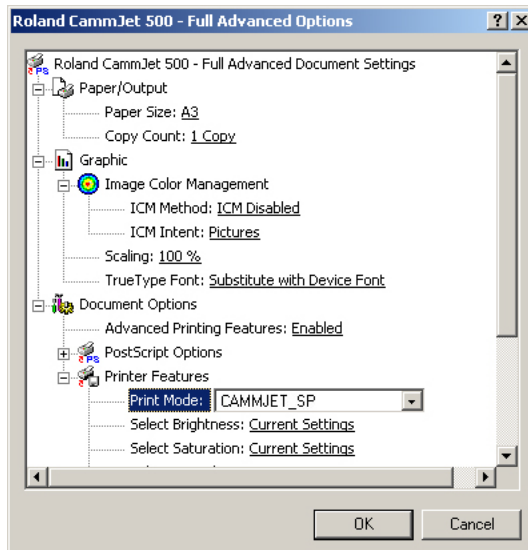
# Configuring PhotoScript

5. Select your paper size.



Select your paper size.

6. Next select the **CAMMJET\_SP** Print mode. This is a critical step. If you have not specified the correct print mode, your separations will not print correctly. Click **OK** to acknowledge the changed paper sizes and print mode. Exit the Photoshop's Page Setup.

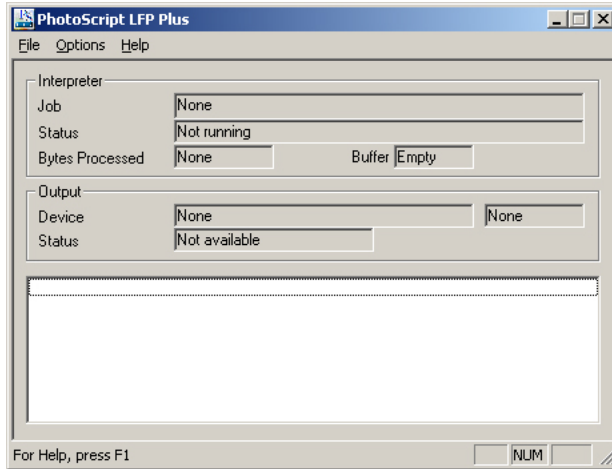


**IMPORTANT:**  
Select "CAMMJET\_SP" as your Print Mode.

## Configuring PhotoScript (cont'd)

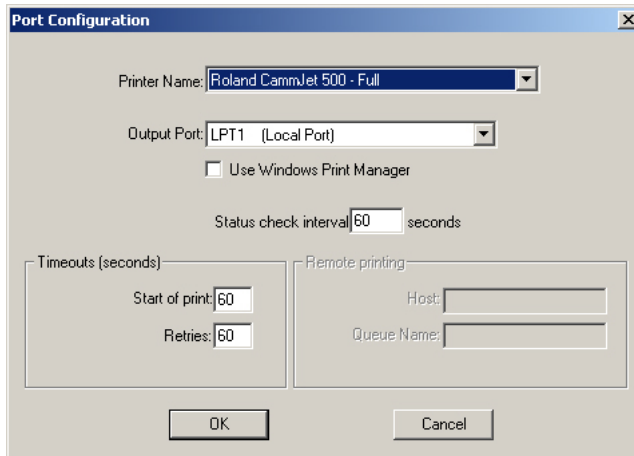
7. Launch PhotoScript 6 from the start menu.

Start Menu>Programs>PhotoScript for Windows>PhotoScript for Windows.



Launch PhotoScript 6 from your Start Menu.

8. Under the Options Menu, select **Output Select** and make sure LPT1 is selected. Verify your Roland CAMMJET is connected to your workstation and click **OK** to close.



Under Output Select, check to make sure "LPT1" is set as your Output Port.

Connect your Roland CAMMJET to your workstation via parallel.

## Prepare Your File for FastFilms

### Create two versions of your file

Two versions of a file must be created, an “unmasked” and “masked” version. These two versions will become the “Working Files” that FastFilms will need to create the various separations. The two versions look as follows:



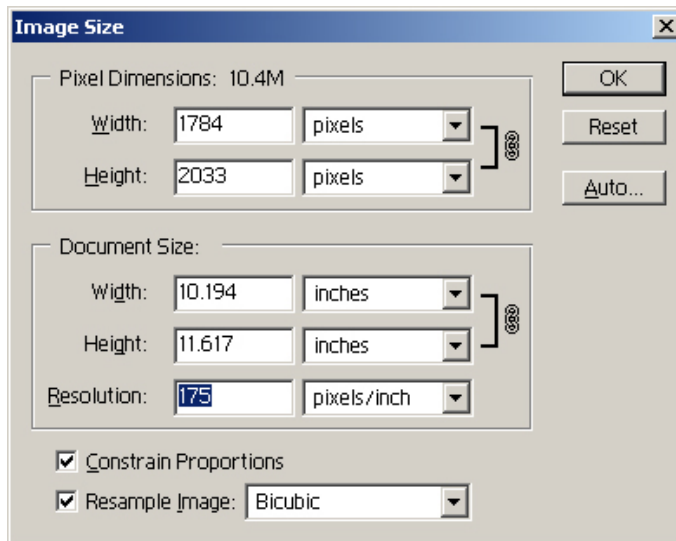
Create two versions of your file as shown.

The left file with the white border is the “unmasked” version.

The right file with the black border is the “masked” version.

### Check file attributes

1. Navigate to **Image>Image Size**.
2. Please check that both files have a resolution between 150 to 200 dpi.



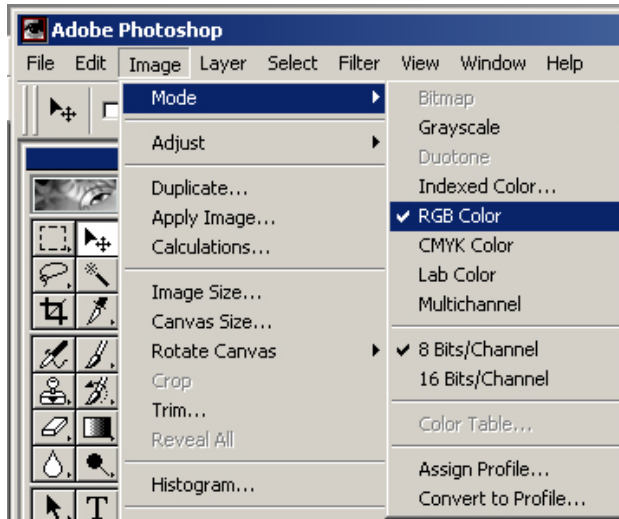
Navigate to the Image Size dialog box (Image>Image Size).

Check that both files are between 150 to 200 dpi.

## Preparing Your File for FastFilms (cont'd)

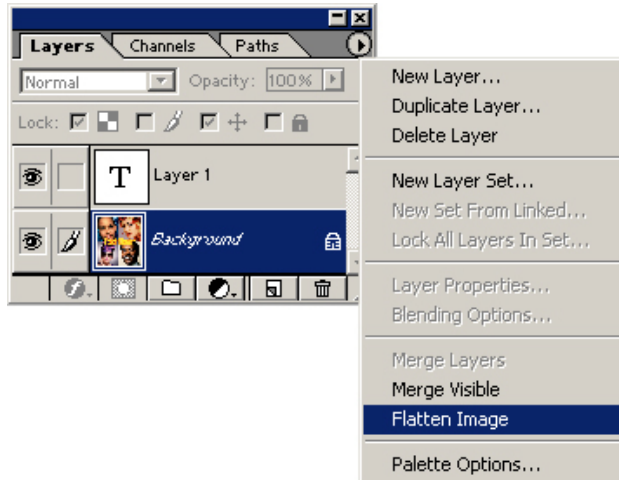
### Checking File Attributes (cont'd)

3. Navigate to **Image>Mode**.
4. Check that your files are in RGB Color Mode.



Under **Image>Mode**, check that your files are in RGB Color mode.

5. Navigate to **Windows>Show Layers**.
6. Select **Flatten Image** from the drop down menu.



Under **Windows>Show Layers**, choose "Flatten Image" from the drop down menu.



# Running your first separation

After you have prepared the two versions of the file, you need only to choose a type of separation. For the sake of versatility, we will use Simulated Process 9 color separation + 2 Whites. Eleven separations may seem excessive, but you can refer to the Fast Films Manual on tips to eliminate separations.

Please refer to section 5 of the Fast Films Manual. This detailed and informative section discusses how best to choose which separation for which type of job.

## Choose a separation

1. Open your Actions Palette (Window>Show Actions) and scroll down until you find **Run Simulated 9-Color + 2 Whites**.

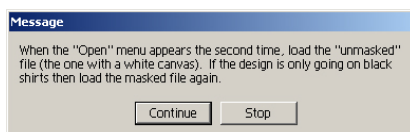
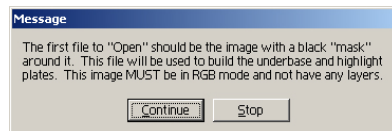
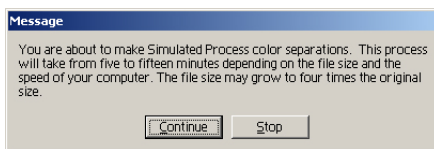


Scroll down the Actions Palette until you find Run Simulated 9-Color+2 Whites.

The file you wish to print does not need to be open as shown left.

Notice this image is in RGB mode (3 channels only).

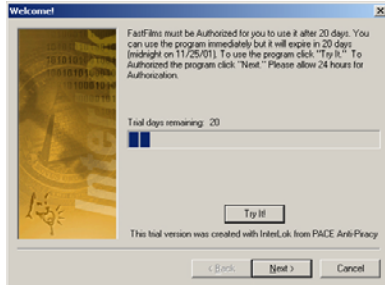
2. Several Help Messages will pop up before you open your file. Click **Continue** for each.



## Running your first separation (cont'd)

### Choose a separation (cont'd)

If you haven't registered the program, you may be prompted at this point with the unlock dialog box. Click **Try It!** to continue.

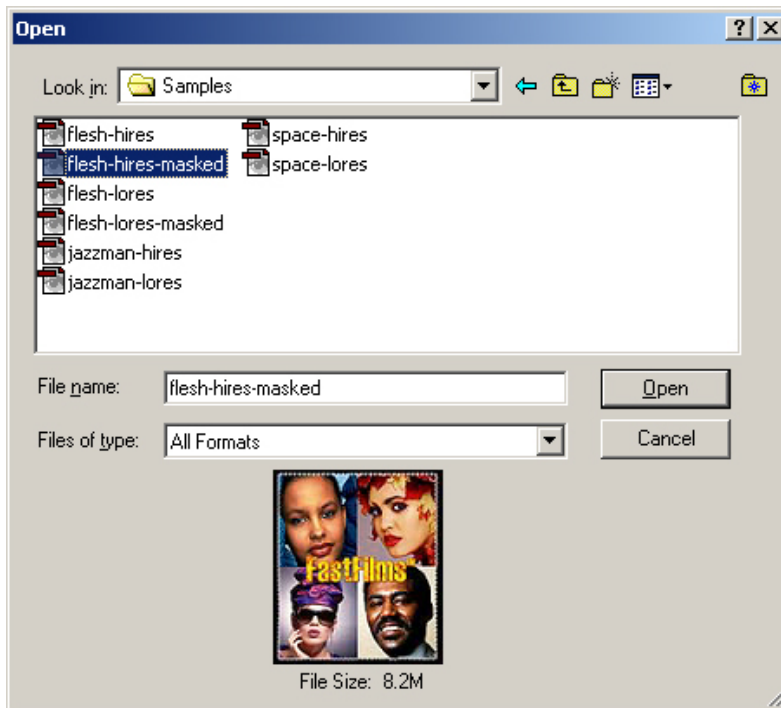


If you are prompted with the unlock dialog box, click "Try It!" to continue.

### Choosing the Working Files

FastFilms uses both the masked and unmasked versions of the file as its working files. These files are needed to determine the interim steps for generating the different color channels. Depending on the background color of your material, you will have to choose one or the other version in this critical step.

1. The first file to open is the "Masked" file. This file is the one with the black border around it. Once you have opened this first file, Fast Films will start to do its job via the scripted actions.

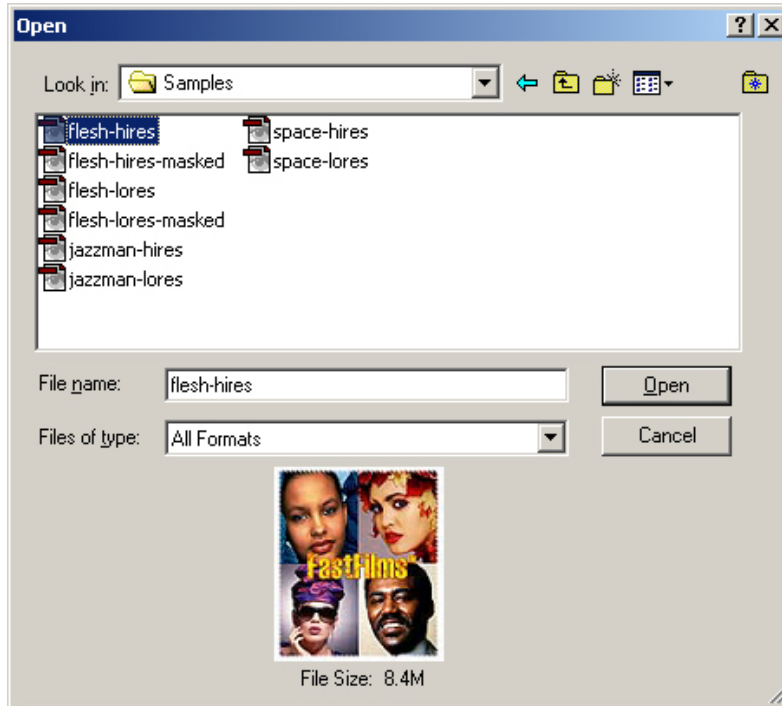


Choose the "Masked" file first; this is the one with the black border around it.

## Running your first separation (cont'd)

### Choosing the Working Files (cont'd)

2. The second file to open depends on the color of the material you are screen printing to. If the material (tee shirt for example) is light or white, choose the file with the white background (unmasked version). If the material is dark or black, choose the file with the dark background again (masked version).



Choose the second file depending on the color of the material you are printing on.

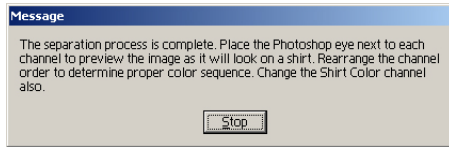
If your material is white, choose the unmasked version (white background) to open.

If your material is black, choose the masked version (black background) to open.

# Running your first separation (cont'd)

## Completion of Separation Process

1. Once the separation generation is completed, you will be prompted – click **Stop**.



Once the process is completed, click “Stop”.

2. With the separation process complete, you can now choose to print your separations using the PhotoScript RIP.

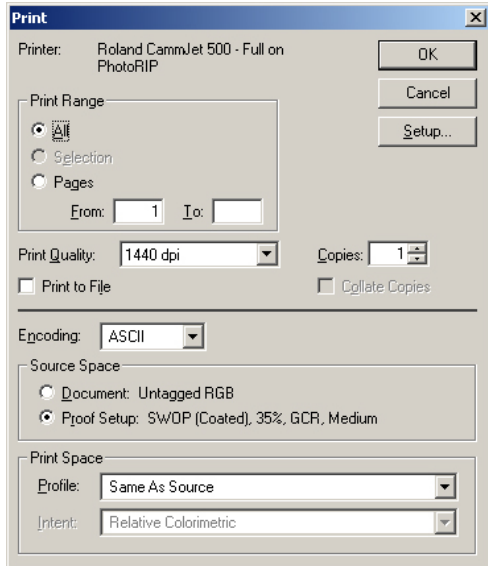


With the separation process complete, you can choose to print your separations using the PhotoScript RIP

3. Please refer to the Section 6 of the Fast Films Reference Manual for valuable information and tips on how best to eliminate specific separation channels.

# Print your separations

1. Load Clear PET Film into your Roland CAMMJET.
2. Ensure no other RIPs are active (e.g. ColorChoice).
3. Select Print from the File Menu.
4. Set your Source Space to **Proof Setup: SWOP (Coated), 35%, GCR, Medium**.
5. Click **OK**.



Set your Source Space to “Proof Setup”.  
Click “OK”.