

How to Use New Roland Profiles

Roland introduces and improves medias on a constant basis. To keep Roland ColorChoice[®] current, these new profiles will have to be installed. This document is meant to guide you through this procedure. There are two basic steps needed for you to use these new Roland Profiles. First, you will need to download the profile from the Roland website. Second, you will need to properly setup Roland ColorChoice[®] to utilize these new profiles.

To keep this document brief, this guide will use only one specific example. You will be shown how to download and install new profiles for a Roland Hi-Fi JET PRO using CMYKcmOG inkset and Photo-base Semigloss Paper (PSP).

Please Note: The profiles posted on Roland's website are only compatible with Roland ColorChoice 4.0 and higher. An upgrade is available for Roland ColorChoice[®] 2.0/3.0. The cost is \$199 and you can upgrade online by navigating to www.colorchoice.com.

Step 1 - Download a Profile

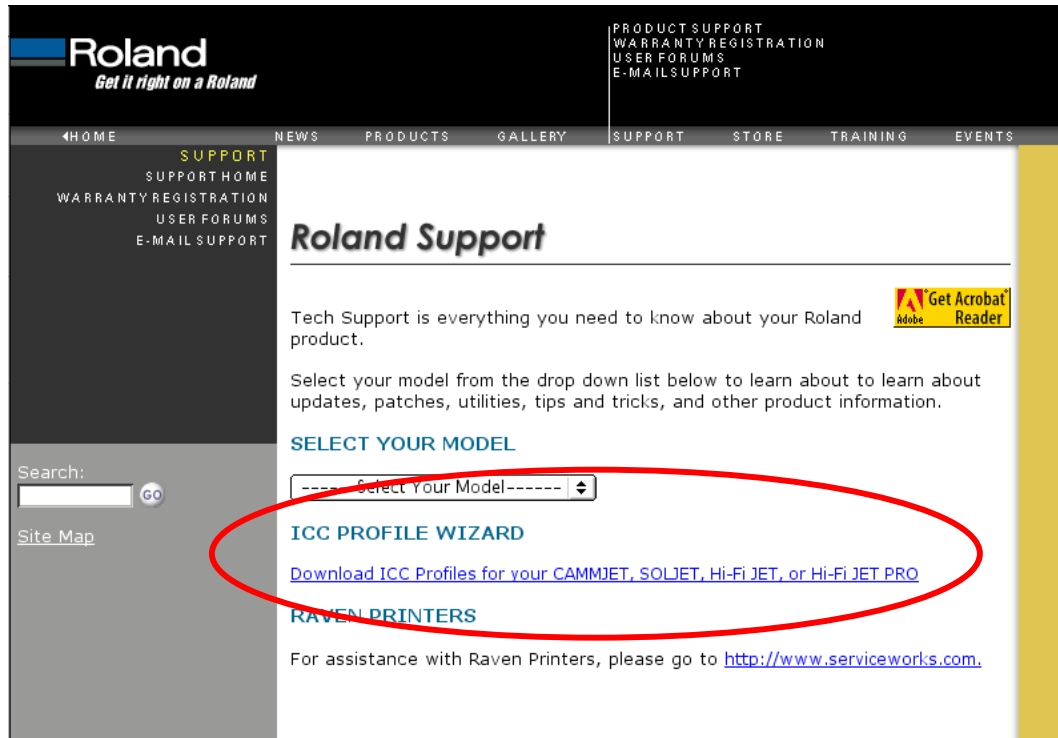
Roland ICC Profile Wizard

Roland has created a utility on its support web page to help you navigate through all available Roland Profiles. You will need to know the type of Roland Inkjet Printer, which inkset, and type of media. Once you have entered the above criteria, you will be able to download the appropriate profile(s). Below is a quick table of the possible parameters and options. Medias are not listed due to the sheer number of media types.

Parameter	Options
Profile Type	Input, Output
Machine	CAMMJET, Hi-Fi JET, Hi-Fi JET PRO, SOLJET
Ink Set	CMYKLcLm, CMYKOrGr, CMYKOrGrLmLc, CMYK PIG, CMYK DYE
Media	All available Roland Medias

Download Instructions

- 1) Type the following url: www.rolanddga.com/profiles
 - a. Or navigate to www.rolanddga.com/support to locate the ICC Profile Wizard
 - b. Click on the ICC Profile Wizard hypertext link below

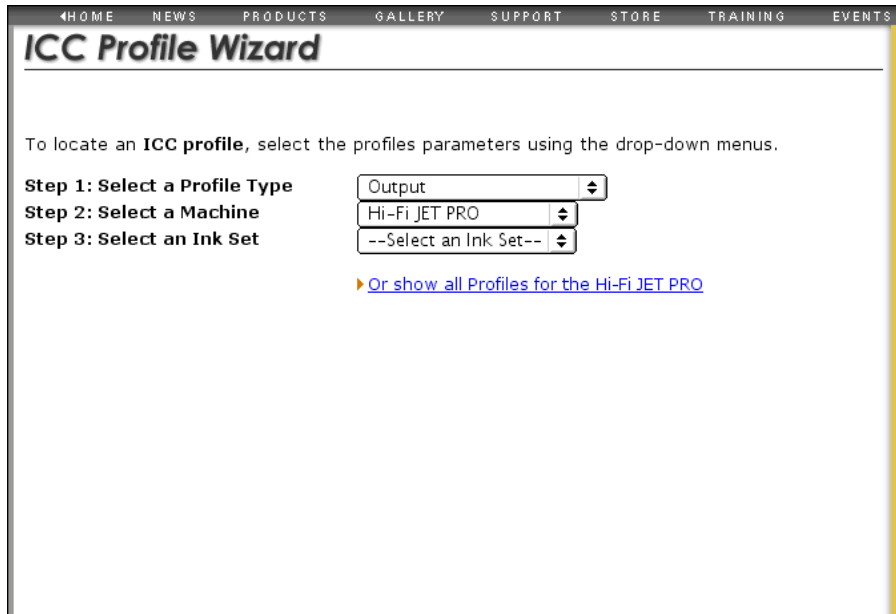


- 2) Select "Output" as your Profile Type



Download Instructions (cont'd)

- 3) Select "Hi-Fi JET PRO" as your Machine type

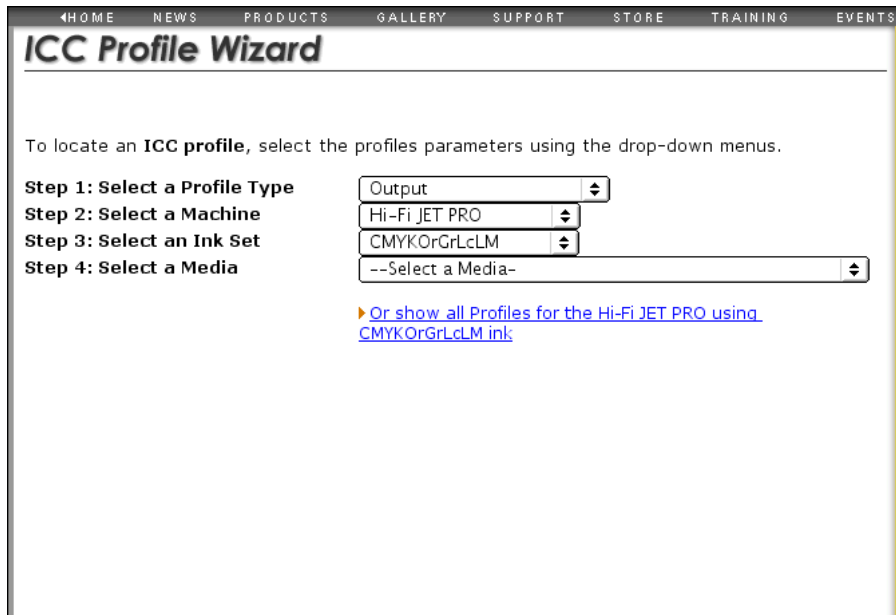


The screenshot shows the "ICC Profile Wizard" web page. At the top, there is a navigation menu with links: HOME, NEWS, PRODUCTS, GALLERY, SUPPORT, STORE, TRAINING, and EVENTS. Below the menu, the title "ICC Profile Wizard" is displayed. The main content area contains the instruction: "To locate an ICC profile, select the profiles parameters using the drop-down menus." Below this, there are three steps listed on the left and corresponding drop-down menus on the right:

- Step 1: Select a Profile Type: Output
- Step 2: Select a Machine: Hi-Fi JET PRO
- Step 3: Select an Ink Set: --Select an Ink Set--

Below the menus, there is a blue link: [Or show all Profiles for the Hi-Fi JET PRO](#)

- 4) Select "CMYKOrGrLcLm" as your Ink Set



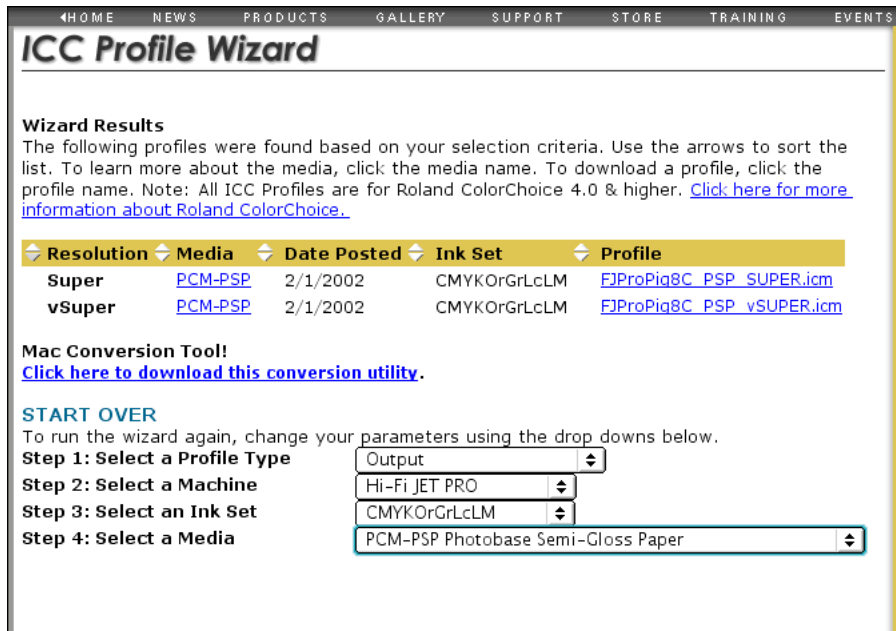
The screenshot shows the "ICC Profile Wizard" web page. At the top, there is a navigation menu with links: HOME, NEWS, PRODUCTS, GALLERY, SUPPORT, STORE, TRAINING, and EVENTS. Below the menu, the title "ICC Profile Wizard" is displayed. The main content area contains the instruction: "To locate an ICC profile, select the profiles parameters using the drop-down menus." Below this, there are four steps listed on the left and corresponding drop-down menus on the right:

- Step 1: Select a Profile Type: Output
- Step 2: Select a Machine: Hi-Fi JET PRO
- Step 3: Select an Ink Set: CMYKOrGrLcLM
- Step 4: Select a Media: --Select a Media--

Below the menus, there is a blue link: [Or show all Profiles for the Hi-Fi JET PRO using CMYKOrGrLcLM ink](#)

Download Instructions (cont'd)

- 5) Select "PCM-PSP Photobase Semi-Gloss Paper" as your Profile Type



ICC Profile Wizard

Wizard Results
The following profiles were found based on your selection criteria. Use the arrows to sort the list. To learn more about the media, click the media name. To download a profile, click the profile name. Note: All ICC Profiles are for Roland ColorChoice 4.0 & higher. [Click here for more information about Roland ColorChoice.](#)

Resolution	Media	Date Posted	Ink Set	Profile
Super	PCM-PSP	2/1/2002	CMYKOrGrLcLM	FJProPig8C_PSP_SUPER.icm
vSuper	PCM-PSP	2/1/2002	CMYKOrGrLcLM	FJProPig8C_PSP_vSUPER.icm

Mac Conversion Tool!
[Click here to download this conversion utility.](#)

START OVER
To run the wizard again, change your parameters using the drop downs below.

Step 1: Select a Profile Type Output

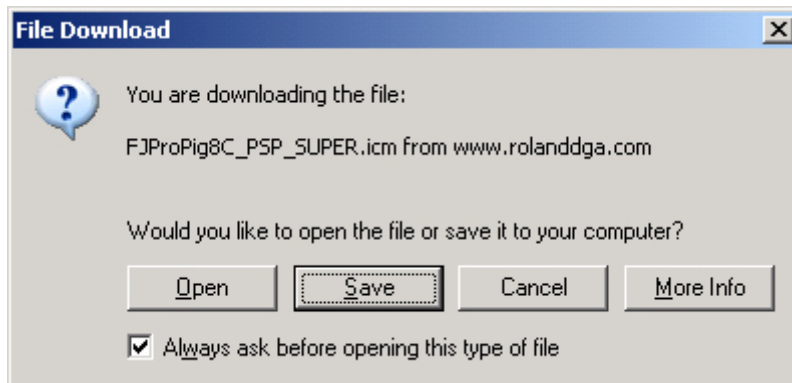
Step 2: Select a Machine Hi-Fi JET PRO

Step 3: Select an Ink Set CMYKOrGrLcLM

Step 4: Select a Media PCM-PSP Photobase Semi-Gloss Paper

- a. There may be one or more profiles for the parameter options you have chosen. Different profiles may be available that correspond to the different print modes the media can be profiled for that particular inkset.

- 6) Download each profile by clicking **Save**

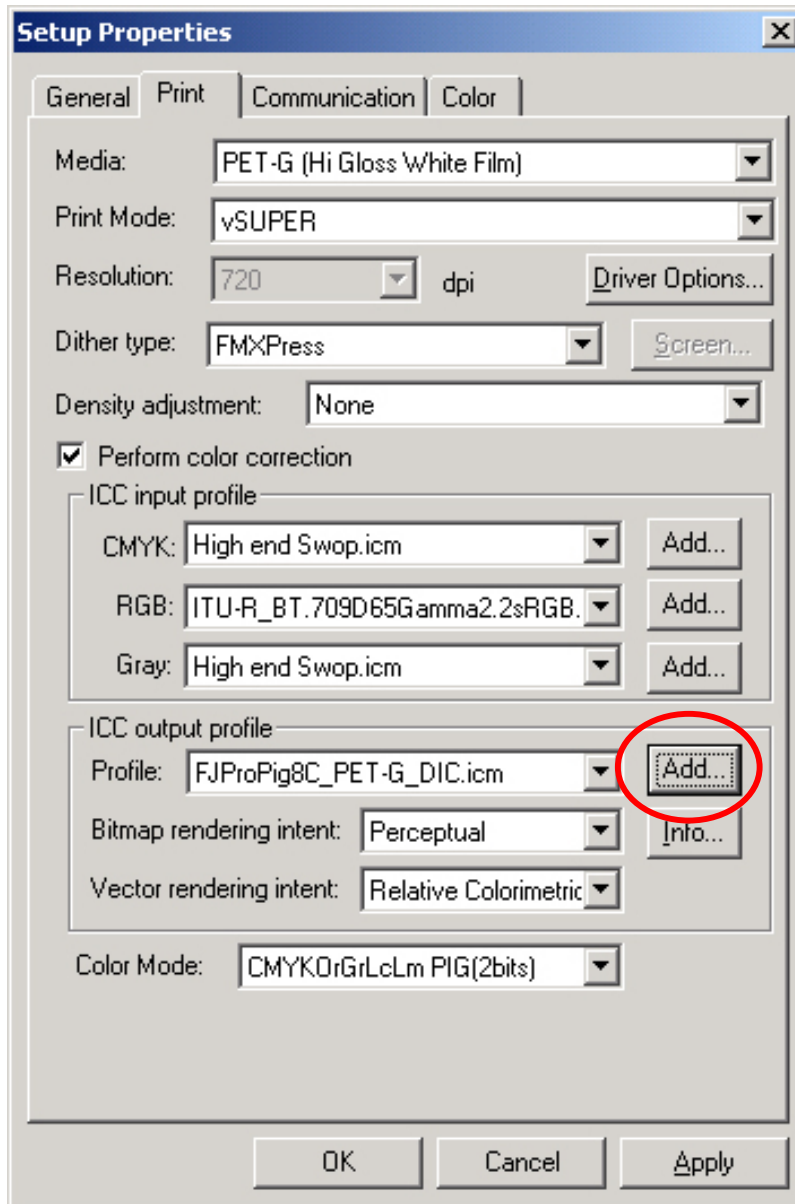


- a. Remember where these profiles have been downloaded to (the desktop or a download folder for example).
- b. You will need to navigate to these profiles in the next section.

Step 2 – Setup Roland ColorChoice®

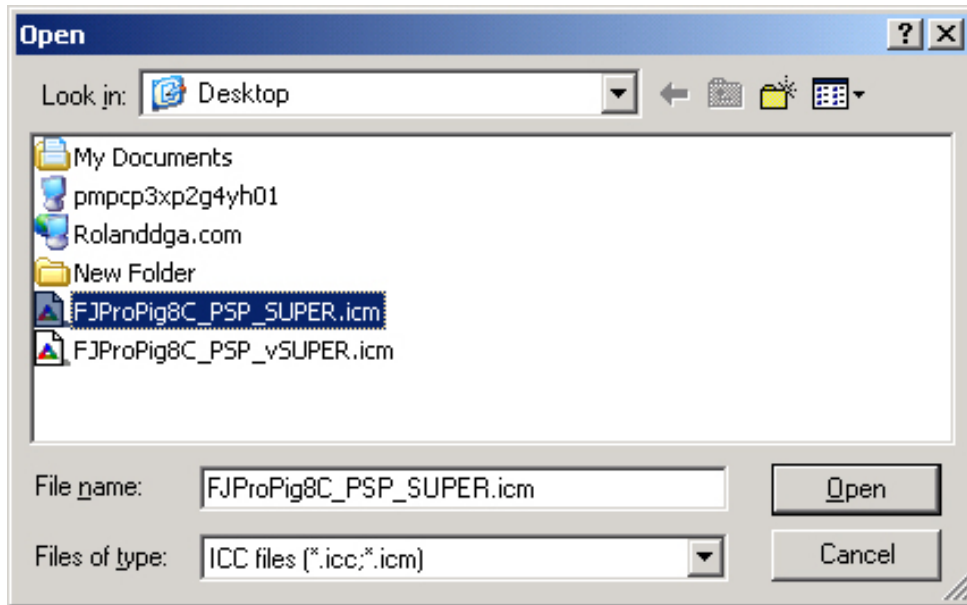
Adding New Profiles to Roland ColorChoice®

- 1) Launch ColorChoice®
- 2) Select Setup/Setup Properties
- 3) Select the Print Tab
- 4) Locate the **Add...** button next to **Profile** pull down menu



Adding New Profiles to Roland ColorChoice® (cont'd)

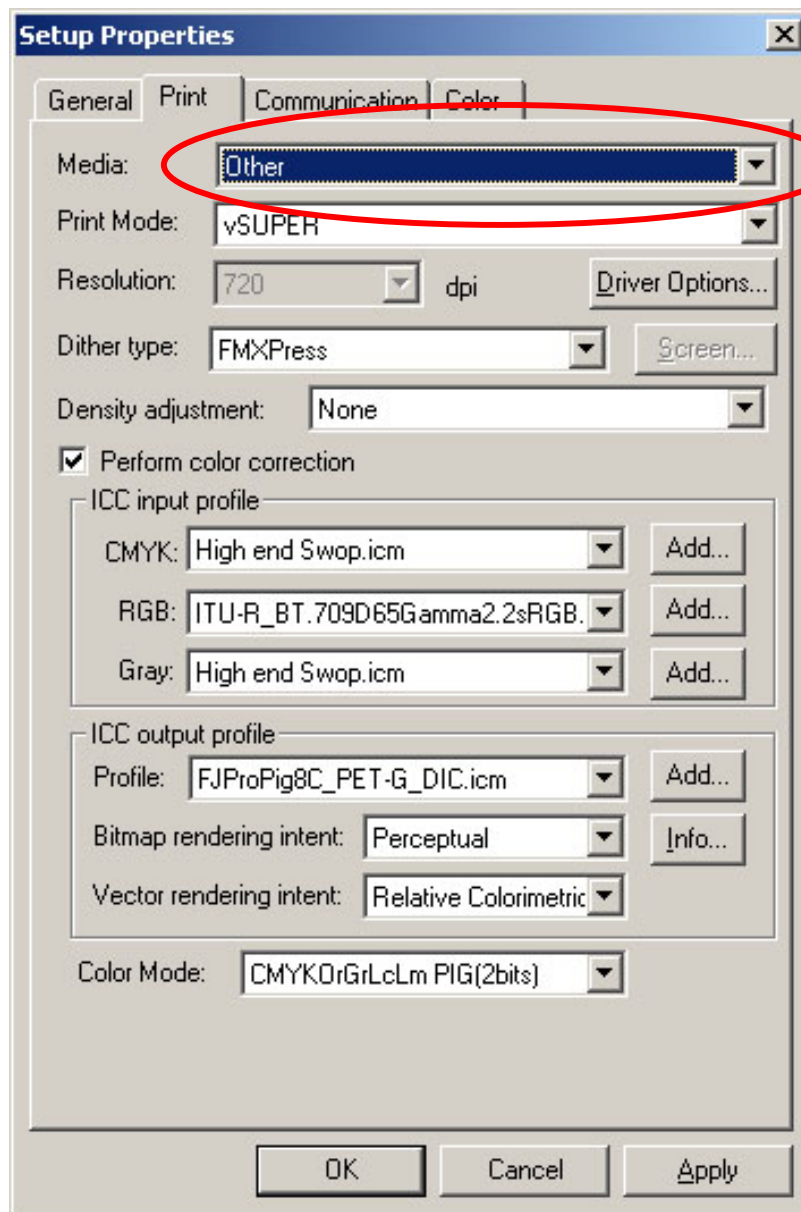
- 5) Locate the download location of your profile(s) and click **Open**



- a. Repeat steps 1-5 for any additional profiles

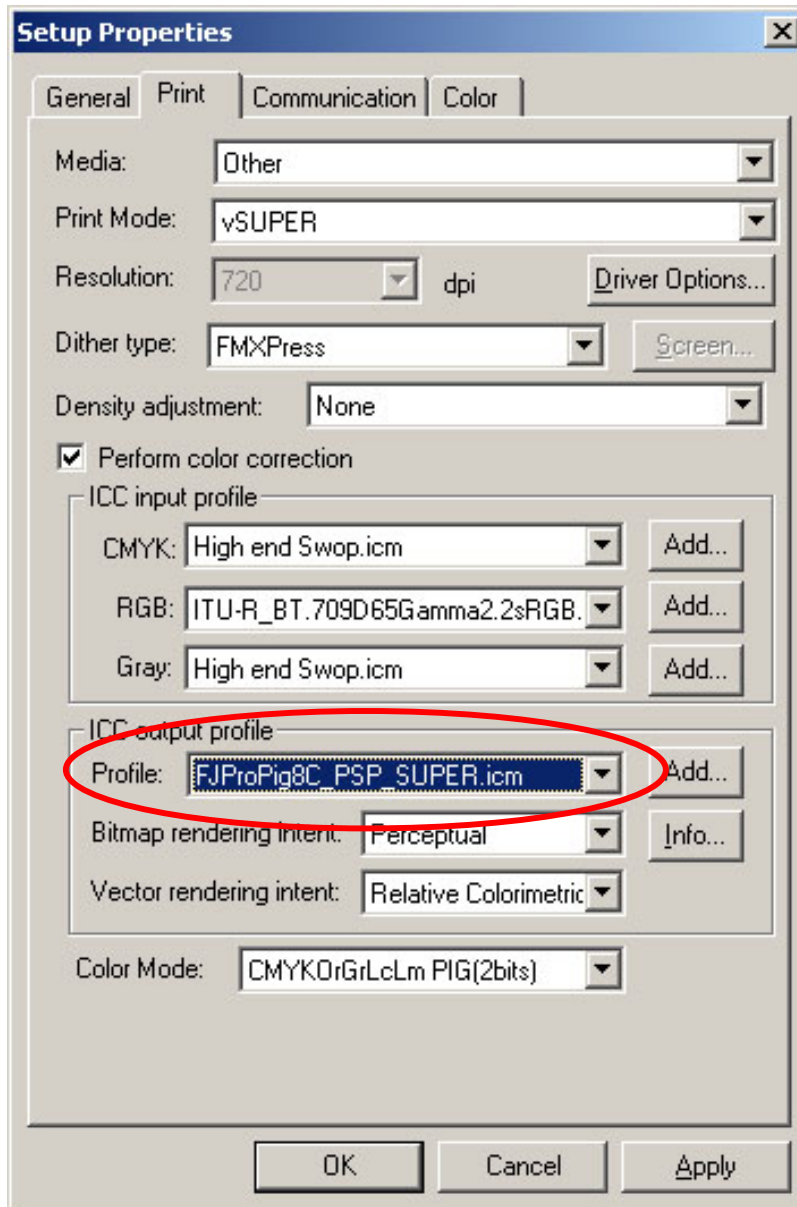
Using New Profiles in Roland ColorChoice®

- 1) Select Setup/Setup Properties
- 2) Select the **Print** tab
- 3) Check to see if the new profile shows up as an option under the **Media:** pull down menu.
 - a. If it does, you are ready to print
 - b. If it does not, proceed to step 4
- 4) Choose **Other** under the **Media:** pull down menu
 - a. You will need to scroll all the way down to find the **Other** setting



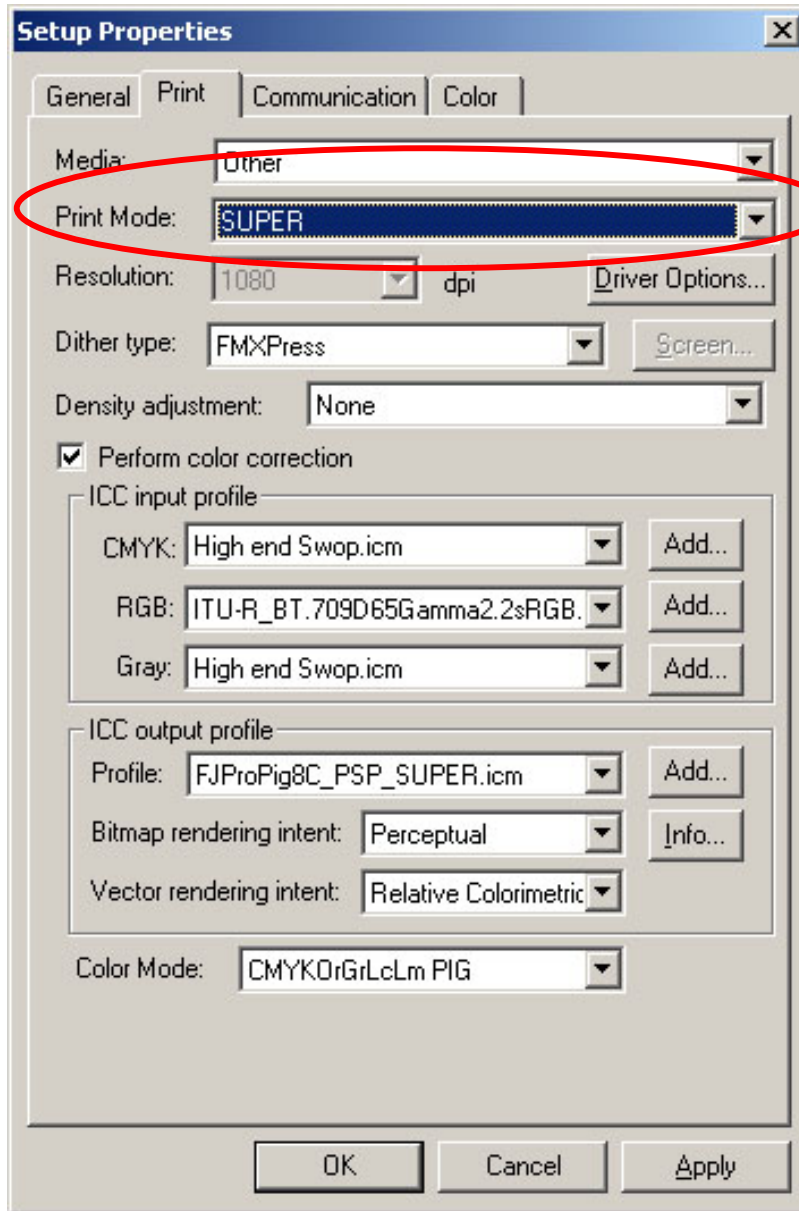
Using New Profiles in Roland ColorChoice® (cont'd)

- 5) Under **Profile:** choose your newly downloaded Roland Profile
 - b. In this case, choose FJProPig8C_PSP_Super.icm



Using New Profiles in Roland ColorChoice® (cont'd)

- 6) Ensure that your print mode corresponds with that of your profile
 - c. When **Other** is selected as the media option, the Print Mode and Color Mode may not always correspond to those of the profile and must be manually selected.



Repeat steps 1-6 for any additional profiles