



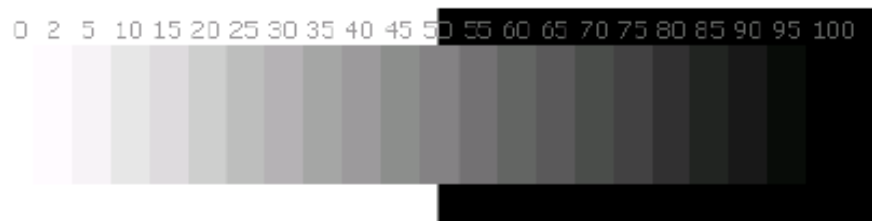
## Tech Support Documents

### Topic: Grayscale Printing

ST53000

### Grayscale Printing

When printing grayscale images to the Hi-Fi JET (FJ-40/50) or CAMMJET (CJ-500) using the Roland ColorChoice® RIP, there are some specific workflow steps necessary to insure accurate grayscale printing. Our goal was to make sure that there is a neutral gray throughout the gamut. Roland tested a grayscale step wedge as shown here and others to insure file neutrality. This file was saved in Photoshop in various files formats (RGB, RGB-Desaturated, CMYK, CMYK – Desaturated and Grayscale). Roland found that the best results were from files that were changed to grayscale in Photoshop then RIPPED with the settings below:



Once, we saved all of the files. We began the printing phase of the testing process. Here are the settings we found that give the best quality output on Concorde Rag Natural White and Concorde Rag Bright White. We found that the file saved as a grayscale image in Photoshop printed the best with the following settings:

**Print Mode:** Super-Uni

**Input Profile:** Grayscale Gamma 1.8 (Which can be found on Roland website: <http://www.rolanddga.com/support/profiles>)

**Output Profile:** We used the correct profile for each media that we printed to (PQM-CRBW and PQM-CRNW, respectively)

**Bitmap Rendering Intent:** Perceptual

**Disclaimer:** All of the information contained in this document is based on the information available at the time of its creation. In no event will Roland DGA Corporation be liable to you for any damages, including damages for loss of business profits, business interruption, loss of business information and the like arising out of the use of or inability to use these materials.