

Support Bulletin: RASD-SB00011-R1

Model: Roland MPX-70

Subject: Precautions to prevent damage to print head cartridge pins.

Date: 11/17/2005

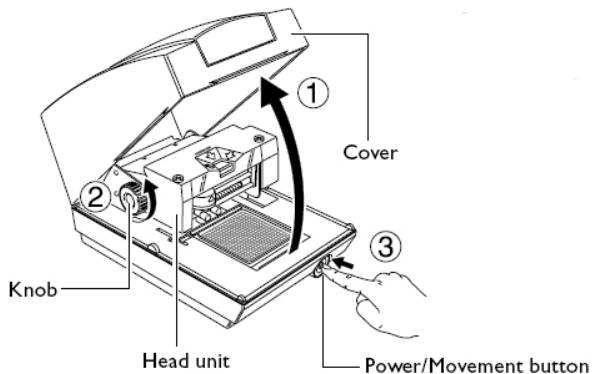
Author: RR

PRECAUTION

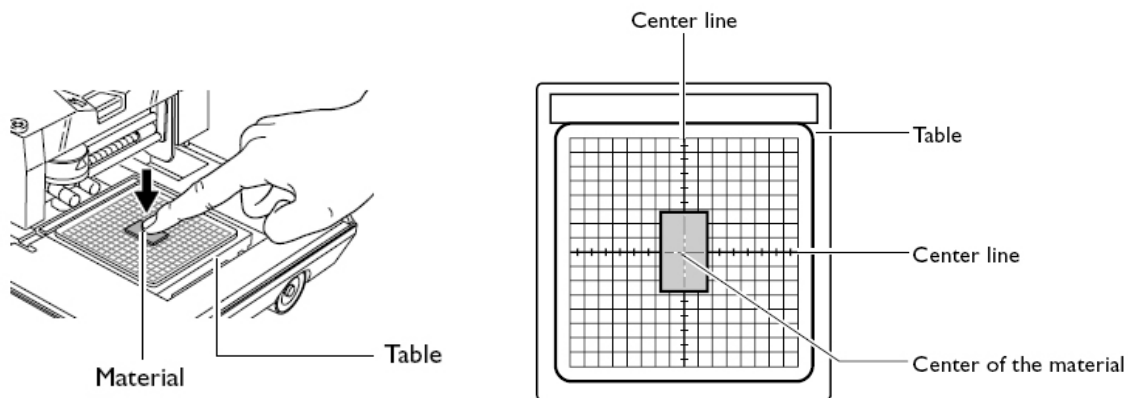
When loading material or printing with the Roland MPX-70, please refer to the following instructions/information prior to printing as to not damage the pins of the print head cartridge and/or throw off the origin setting of the machine.

Material Loading Precautions:

1. Open the cover.
2. Loosen the knob on the left hand side of the machine.
3. Press the Power/Movement button to initialize the machine.



4. Place the material in the center of the grid and press down on the material gently to secure it in place.



5. Press the Power/Movement button to move the table to the center.

Roland®

Advanced Solutions Division

Support Bulletin: RASD-SB00011-R1

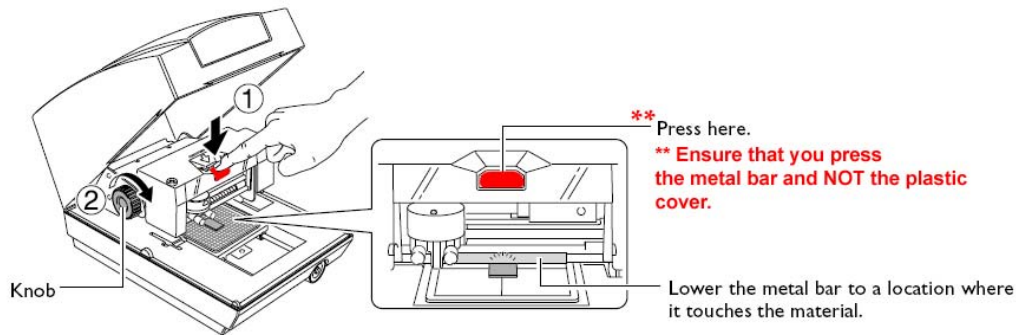
Model: Roland MPX-70

Subject: Precautions to prevent damage to print head cartridge pins.

Date: 11/17/2005

Author: RR

6. Press the Metal bar gently at the location shown (#1) being sure not to press the plastic housing. Lower the head unit slowly until the lower metal bar is in contact with the material.



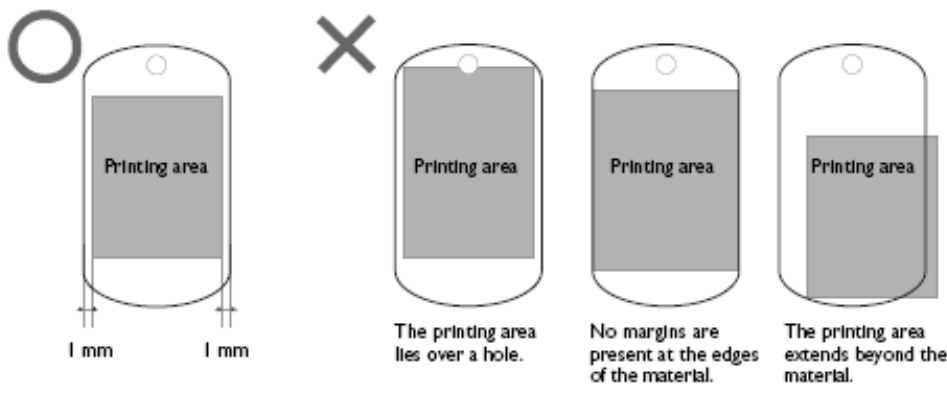
7. Once the head is in position, tighten the knob on the left hand side (#2) to secure the head unit in place.

NOTES:

- When lowering the head unit, be sure to press down at the location specified in the steps above. Failure to do so can cause inaccurate height alignment and possible head damage.***
- Lower the head unit slowly. Lowering it too quickly or forcefully may damage the surface of the material.***
- When lowering the head unit, the metal bar also descends, and contacts the material. Once the knob is secured the metal portion will rise slightly, but this **does not** affect the loading or positioning of the material.***

Printing Precautions:

1. When creating print data, ensure that you leave at least a 1mm margin from the edge of your material. Also, avoid printing over the holes on your pendants. The pin on the print head cartridge can be damaged if it strikes the edge or the hole on the pendant being printed.



★

Disclaimer: All of the information contained in this document is based on the information available at the time of its creation. In no event will Roland ASD be liable to you for any damages, including damages for loss of business profits, business interruption, loss of business information and the like arising out of the use of or inability to use these materials.

Support Bulletin: RASD-SB00011-R1

Model: Roland MPX-70

Subject: Precautions to prevent damage to print head cartridge pins.

Date: 11/17/2005

Author: RR

-
2. When at all possible, templates should be used when setting up the file to print. This will lower the risk of damaging any of the pins on the print head cartridge as you will be working with a specific shape for the material.
 3. Templates can be downloaded from the MPX-70 support page on the Roland website at <http://www.rolanddga.com/support>. When using the templates, refer to Support Bulletin RASD-SB00009.PDF for instructions on the usage of the templates.

* For more information on proper image placement and data creation, please refer to page 32 of your MPX-70 Users Manual.