

# New Product Information

## VersaCAMM SP-300V

### Wide Format Inkjet Printer/Cutter

#### Overview

The SP-300V is the newest addition to Roland's wide format printer family, and represents the evolution of the VersaCAMM printer/cutter series. Building on the successful VersaCAMM SP-300 4 color printing and contour cutting technology that has become Roland's best selling Print/Cut solution; Roland has added new features to the SP-300V improving both ease of use and versatility.

The SP-300V can print up to 29 inches in width and achieves a maximum print speed of 63-square-feet per hour. Having a combined print/cut solution not only allows for unattended operation during printing and precision contour cutting, but also saves floor space and streamlines the digital workflow.

The core of the new SP-300V features is the Roland VersaWorks™ RIP (Raster Image Processor), designed by Roland exclusively for Roland printers. From the ground up, Roland composed VersaWorks to be incredibly robust, but also amazingly easy to use.

Highlighted in this overview are the features and improvements that make the SP-300V such an exciting printer and major addition to Roland family of inkjet products.

These new features include:

- ✚ VersaWorks™ RIP
- ✚ Print speeds up to 63 sfph
- ✚ Media Counter

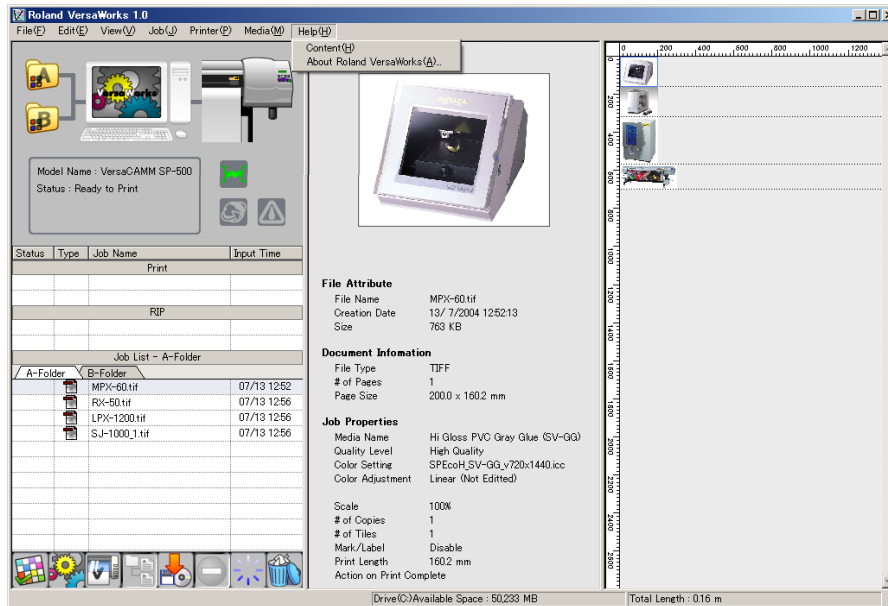
- ✚ USB Connectivity
- ✚ Removable Media Guides



## New Features

### VersaWorks™ RIP

The SP-300V was developed to work seamlessly with Roland VersaWorks. This all-new RIP was composed by Roland to ensure exceptional production output with unmatched ease of use. VersaWorks is built upon the genuine Adobe® PostScript® CPSI 3016™ engine. It supports true Adobe PostScript 3 and can be used on Windows XP PRO and 2000 operating systems.



### New Print Speeds

With the addition of Roland's VersaWorks, the SP-300V can now print at faster speeds in all print modes including the higher quality modes. In addition, VersaWorks made it possible to add new high speed print modes allowing you to take full advantage of the SP-300V printer's capabilities.

Mode	Resolution	Passes	Speed
High Speed Banner	360 x 720	4 Pass	63 sfph
High Speed Vinyl	360 x 720	4 Pass	56 sfph
Standard	720 x 720	8 Pass	26.9 sfph
High Quality Banner	720 x 1440	16 Pass	15.7 sfph
High Quality Vinyl	1080 x 1080	18 Pass	13.3 sfph

### **Media Counter**

A media counter has been added to the new SP-300V allowing users to enter the length of a new roll of media into the printer's control panel. The counter then tracks the amount of media used from that roll. The user can then check the amount of media left on a roll before sending a print to the SP-300V. You can also print the remaining length information on the leading edge of a roll before removing it from the printer. This feature allows you to easily document how much media is remaining on partial rolls.

### **USB Connectivity**

Designed for the novice user, the SP-300V comes standard with a USB 1.1 port. Eliminating the need to adjust network settings, this configuration allows for simple installation and incredible ease in operating the printer.

### **Removable Media Guides**

To insure correct media feed and the highest possible image quality, the SP-300V has long and short removable media guides. These guides are essential when using media with edge curl tendencies and can be removed for Print/Cut operation.



## Summary

The SP-300V was designed for the novice to advanced user in a variety of applications, including short-run signs, banners, decals, labels and heat transfers. With the ability to print on uncoated media with advanced ECO-SOL inks, the SP-300V can produce vibrant color images at low cost with up to 3 years outdoor durability. However, it is the addition of Roland VersaWorks which allows for the full use of the SP-300V's abilities. VersaWorks is built around an easy-to-use graphical interface that allows the user to manage the entire printing process from one master screen. The Roland VersaCAMM SP-300V is another welcome addition to the Roland family --a versatile, easy to use and incredibly affordable Eco-SOL printer/cutter.

## VersaWorks™ Compatibility and Profile Data

### RIP Compatibility and Profiles

The following list shows the schedule in which profiles will be available. Profile updates will be available through

#### Currently available

ESM-FRSB – Flame Retardant Scrim Banner  
ESM-GCVP – Glossy Calendared Vinyl  
ESM-LBV – Light -Weight Banner Vinyl  
ESM-MCVP – Matte Calendared Vinyl  
SCM-GPPG – White Glossy Photo Paper  
SCM-GVWG – Glossy Vinyl  
SCM-SPVCG – Glossy Adhesive Vinyl  
ESM-PRVP – Premium Reflective Vinyl  
ESM-SGP – Solvent Glossy Paper  
ESM-VTVR – View-Through Vinyl  
SCM-PGVP – Premium Cast Vinyl  
PGM-TWF – Translucent White Film  
PCM-HTM – Opaque Heat Transfer Material  
ESM-CWVR – Wrap Vinyl  
ESM-TCVR – Translucent Vinyl  
PCM-PMP2 – Premium Matte Paper  
PCM-MAC7 – Matte Artist Canvas  
SCM-ECVP – Economy Vinyl

Major software manufactures including Scanvec Amiable, Cadlink and Onyx are expected to support the SP-300V.