



What's New?

JobControl Release 9.1.0

MCO2:



Extended colour palette with **Multi Colour Option 2**

	black 000.000.000		zinc yellow 255.221.000		light blue 000.177.230
	red 226.000.060		signal yellow 253.196.000		sky blue 000.140.208
	blue 000.094.168		deep orange 234.101.013		violet 056.055.140
	green 000.154.133		carmine red 205.000.057		yellow green 134.190.096
	squirrel grey 134.142.147		traffic purple 197.000.123		orange brown 195.100.061

JobControl is supporting now 15 colours standard (plus up to 120 user defined colours) with appropriate lasers and MCO license key.

Compatible printer driver and MCI-Check software are as well available as version 9.1.

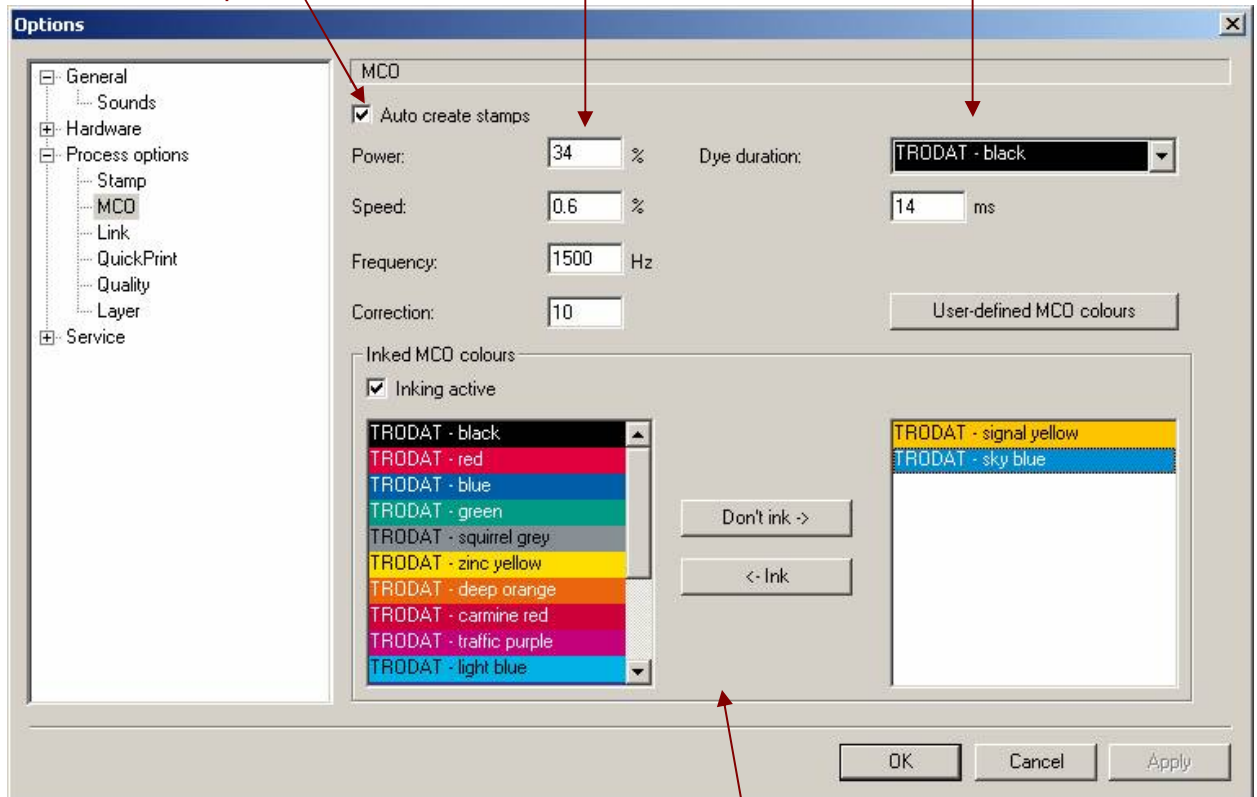


MCO2 Process options menu:

if checked stamp job will be created after MCO job has arrived into queue

pad cut settings

inject duration separately per colour - in milliseconds

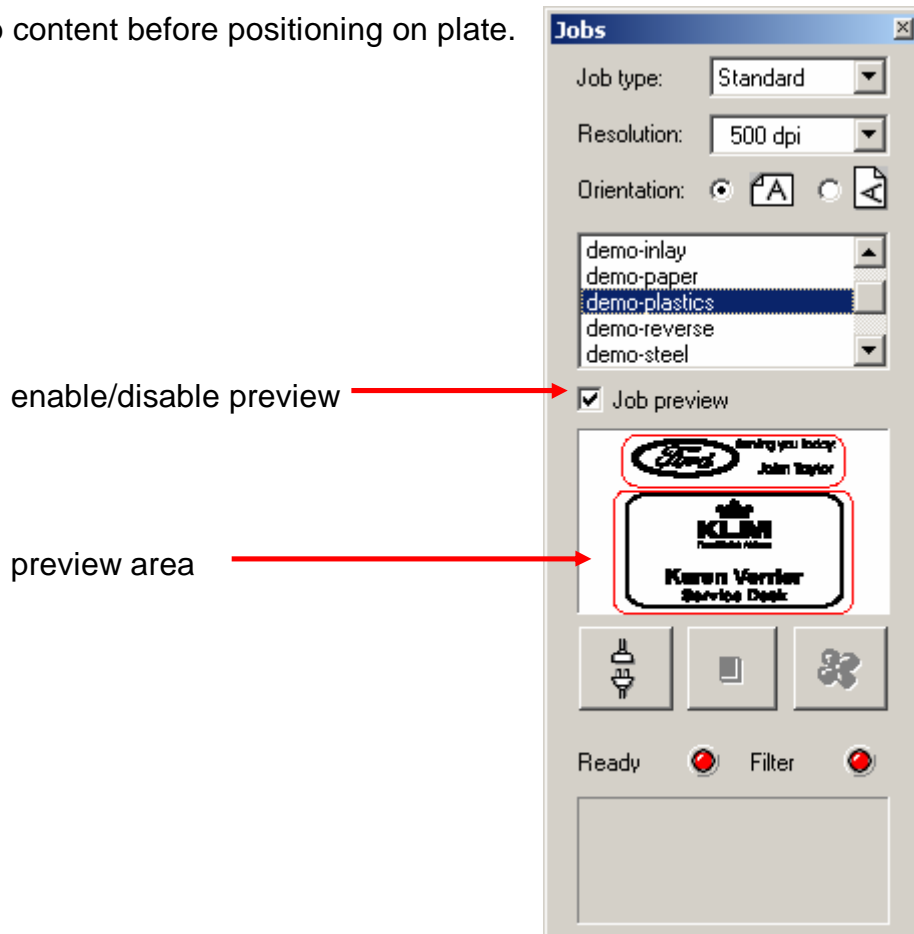


enable/disable individual or all colours for automated inking



Job preview:

See job content before positioning on plate.



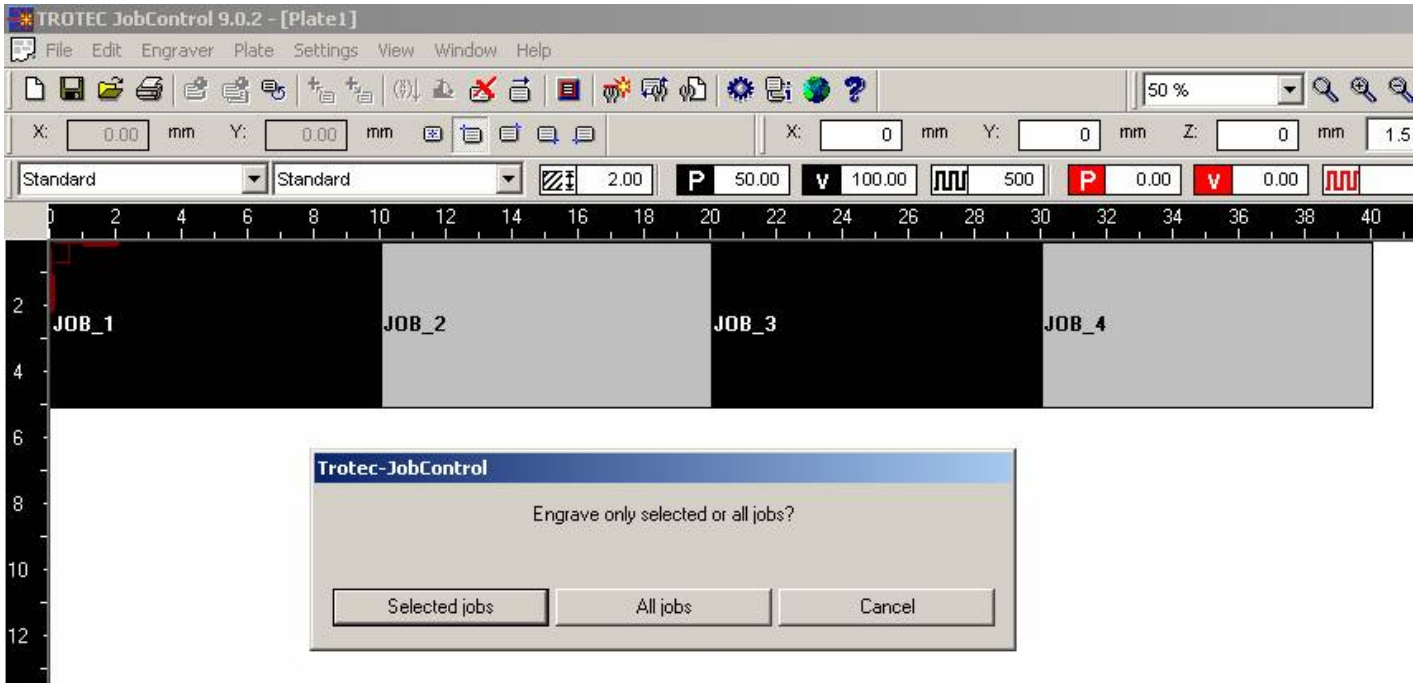
All graphical contents like bitmaps and vectors are shown, regardless of material settings.

The preview displays each single selected job from either queue or plate.



Process selected jobs only:

Dialog whether to engrave all or just selected jobs upon starting.

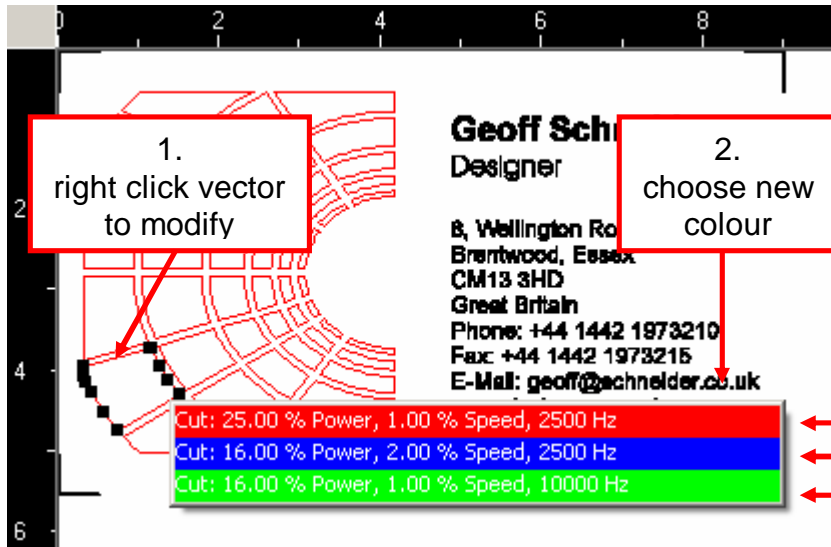




Alter vector colours:

To change colours of vectors in WYSIWYG view, right click the vector to modify and choose from a list of available vector colours.

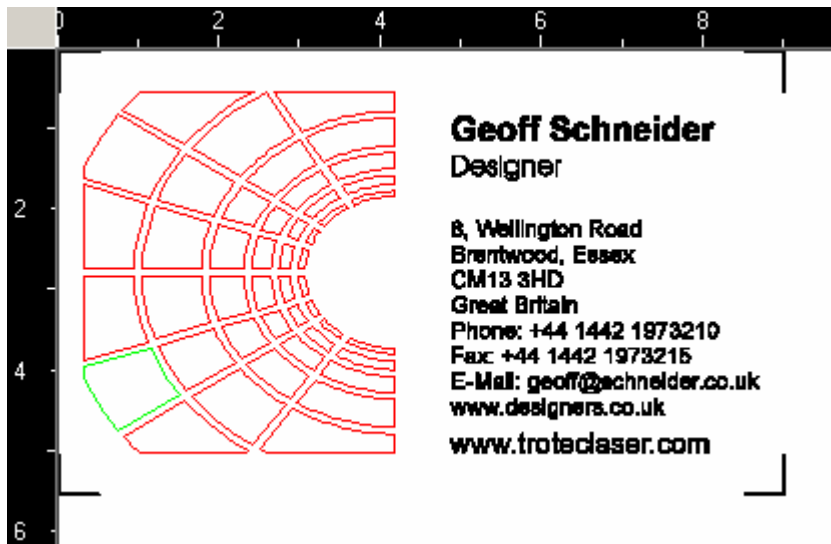
Job in WYSIWYG view



Material settings

Less	Colour	Power
Engrave	1	38.
Cut	2	25.
Cut	3	16.
Skip	4	
Skip	5	
Cut	6	16.
Skip	7	
Skip	8	
Skip	9	
Skip	10	
Skip	11	
Skip	12	
Skip	13	
Skip	14	

modified job



All vector colour modifications are permanently saved to the job file.

Colour modification of auto cutlines (rectangular, circular, optimized) is not possible.

Trotec Produktions- und Vertriebs GmbH_Linzer Strasse 156, A-4600 Wels, Austria

tel_+43 (0)7242 239-0, fax_+43 (0)7242 239-7380, <mailto:trotec@trotec.net>, <http://www.trotec.net>

Oberbank Wels. BLZ 15130. Konto 961-0048/27. SWIFT: OBKLAT 2 LWEL. DVR0939838, FN164144p b LG Wels, UID.Nr. ATU43666001



Outline function:

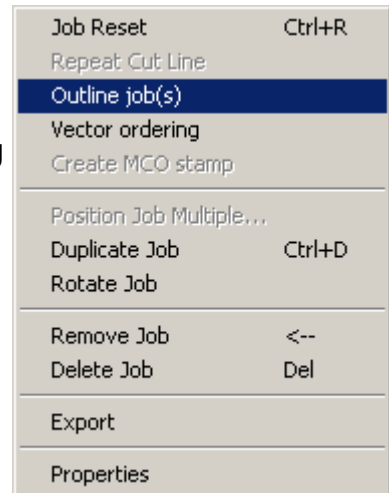
By using menu Edit or the job context menu, outlining may be started.

The lens carriage begins travelling along the surrounding shape of all selected jobs.

The laser is switched off, while the red laser pointer is indicating position of job content.

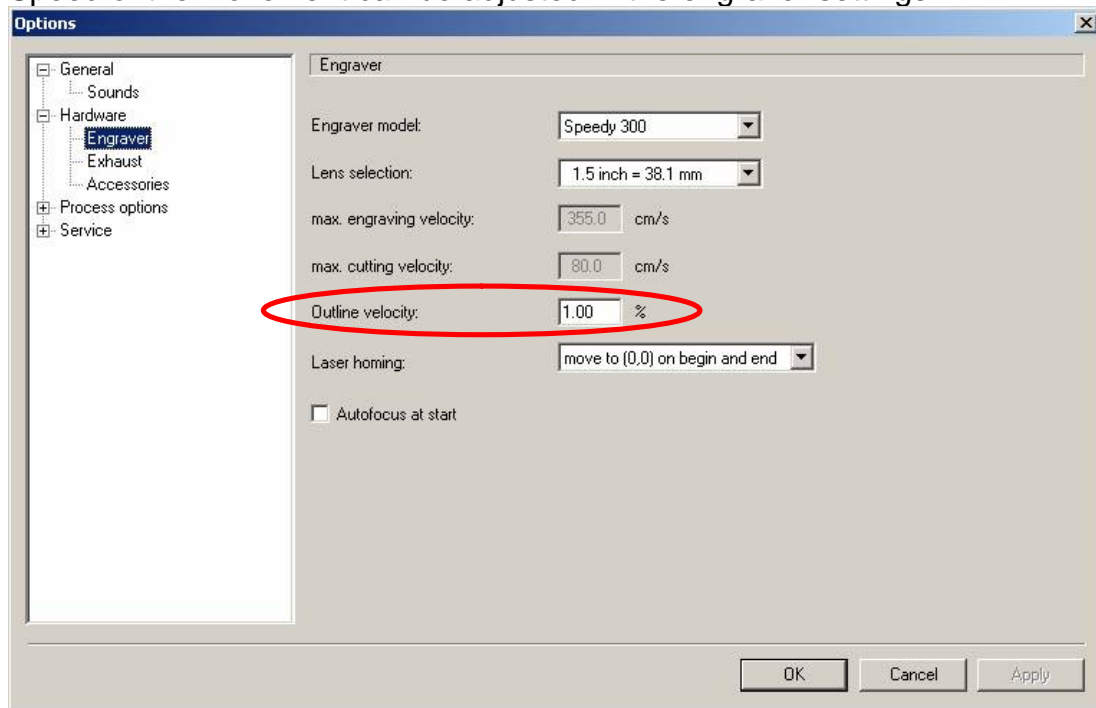
This movement is repeatedly done until the user activates the cancel button.

For safety reasons outlining is only possible with all covers closed.



Make sure there is enough clearance between head and material !

Speed of the movement can be adjusted in the engraver settings.



setting
new
standards

trotec[®]
laser. marking cutting engraving

Outline example:

this surrounding shape is
indicated by the laser pointer



Trotec Produktions- und Vertriebs GmbH_Linzer Strasse 156, A-4600 Wels, Austria

tel_+43 (0)7242 239-0, fax_+43 (0)7242 239-7380, <mailto:trotec@trotec.net>, <http://www.trotec.net>

Oberbank Wels. BLZ 15130. Konto 961-0048/27. SWIFT: OBKLAT 2 LWEL. DVR0939838, FN164144p b LG Wels, UID.Nr. ATU43666001



What else was new?

JobControl Release 9.0.1

Windows[®] Vista[™] ready:

JobControl (9.x) and driver (9.x) are capable to work with Microsofts new operating system Vista.

Additionally it's possible to use those versions with Windows 2000 (SP4) and Windows XP (SP2).

Administrative privileges are not longer required to operate JobControl.

New file and folder configuration

File/Folder	JobControl 6 / 7	JobControl 9
Archive folder	C:\Program Files\Trotec\JobControl\Archive\	no longer used
Spool folder	C:\Program Files\Trotec\JobControl\Spool\	user configurable Windows 2000/XP: C:\Documents and Settings\All Users\Application Data\Trotec\JobControl\900\Spool\ Windows Vista: C:\Program Data\Trotec\JobControl\900\Spool\
Work folder	C:\Program Files\Trotec\JobControl\Work\	fixed Windows 2000/XP: C:\Documents and Settings\All Users\Application Data\Trotec\JobControl\900\Work\ Windows Vista: C:\Program Data\Trotec\JobControl\900\Work\
Manuals	C:\Program Files\Trotec\JobControl\	C:\Program Files\Trotec\JobControl\MNL\
Program data e.g. material and size settings, log files	C:\Program Files\Trotec\JobControl\	Windows 2000/XP: C:\Documents and Settings\All Users\Application Data\Trotec\JobControl\900\ Windows Vista: C:\Program Data\Trotec\

Trotec Produktions- und Vertriebs GmbH_Linzer Strasse 156, A-4600 Wels, Austria

tel_+43 (0)7242 239-0, fax_+43 (0)7242 239-7380, <mailto:trotec@trotec.net>, <http://www.trotec.net>

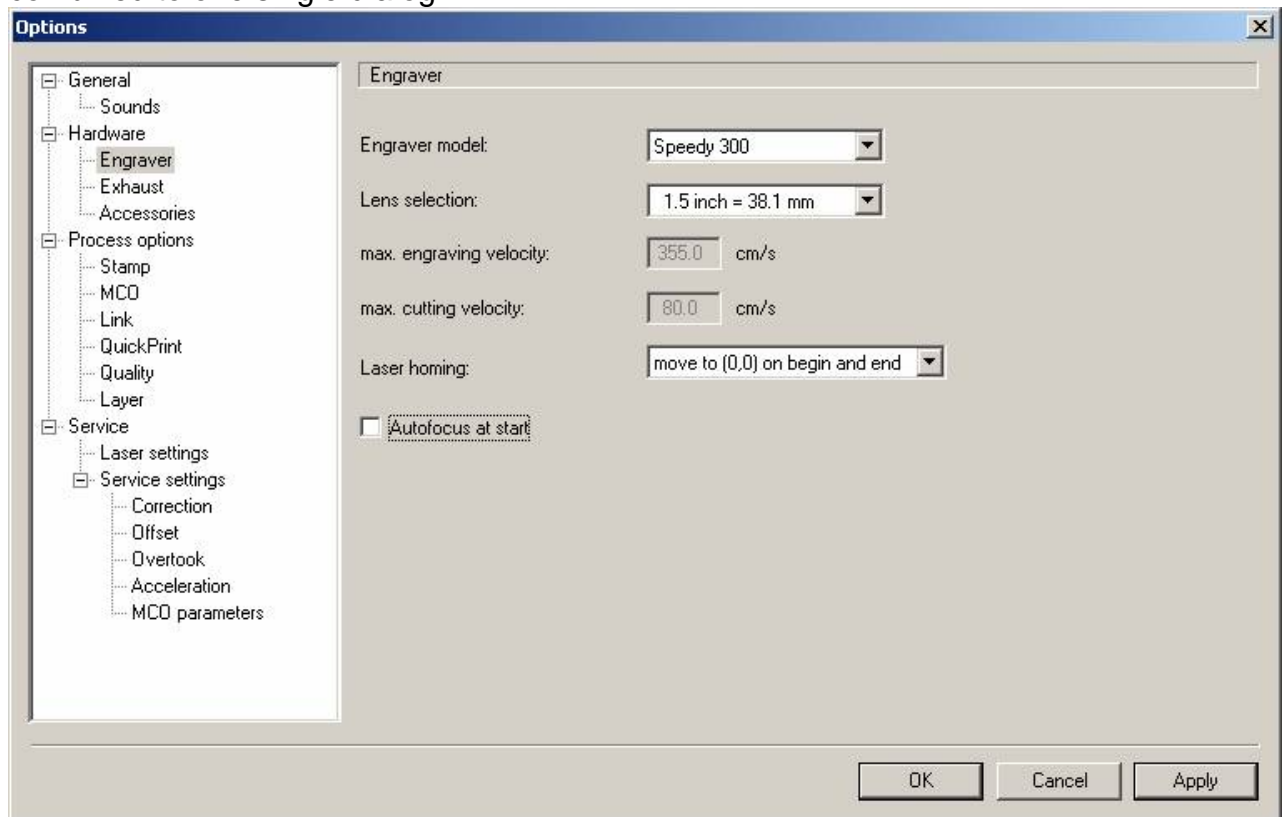
Oberbank Wels. BLZ 15130. Konto 961-0048/27. SWIFT: OBKLAT 2 LWEL. DVR0939838, FN164144p b LG Wels, UID.Nr. ATU43666001



Trotec7.ini	C:\Windows\	JobControl\900\ new name: "JC.INI" Windows 2000/XP: C:\Documents and Settings\All Users\Application Data\Trotec\JobControl\900\ Windows Vista: C:\Program Data\Trotec\JobControl\900\
Mco.dll Trotec.dll	C:\Program Files\Trotec\JobControl\	C:\Program Files\Trotec\Common Files\
TRMaterial.dll	C:\Windows\System32\	C:\Program Files\Trotec\Common Files\

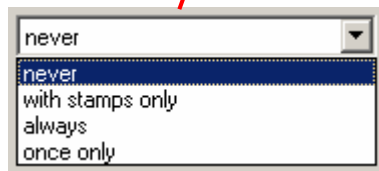
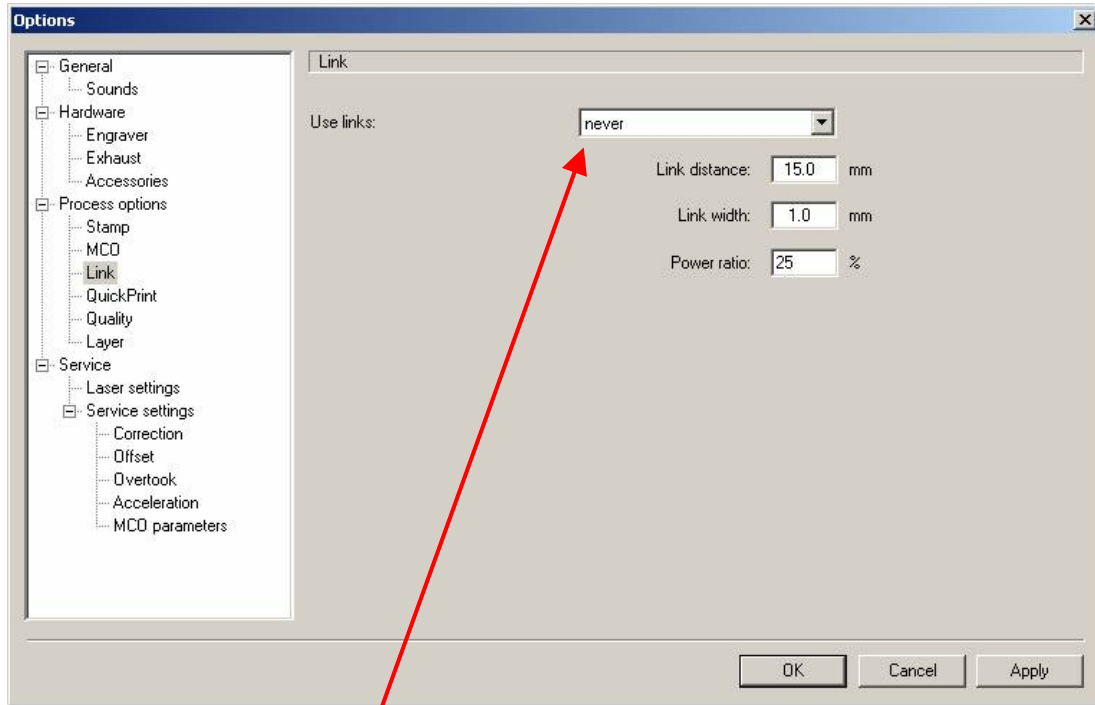
Newly-arranged Options dialog:

Dialogs "Options", "Advanced Options" and "Service Settings" have been combined to one single dialog:





Additional Link options:



Link selection offers the following options:

- | | |
|------------------|--|
| never | – make no links |
| with stamps only | – links are just created when cutting stamps |
| always | – create links with all cut lines in all process kinds |
| once only | – one-shot occurrence when processing next plate |

COM port autoselection:

Ports 1 to 10 are scanned for appropriate Trotec equipment upon actuating the connect button.

Trotec Produktions- und Vertriebs GmbH_Linzer Strasse 156, A-4600 Wels, Austria

tel_+43 (0)7242 239-0, fax_+43 (0)7242 239-7380, <mailto:trotec@trotec.net>, <http://www.trotec.net>

Oberbank Wels. BLZ 15130. Konto 961-0048/27. SWIFT: OBKLAT 2 LWEL. DVR0939838, FN164144p b LG Wels, UID.Nr. ATU43666001



trotec[®]
laser. marking cutting engraving

Trotec Produktions- und Vertriebs GmbH_Linzer Strasse 156, A-4600 Wels, Austria

tel_+43 (0)7242 239-0, fax_+43 (0)7242 239-7380, <mailto:trotec@trotec.net>, <http://www.trotec.net>

Oberbank Wels. BLZ 15130. Konto 961-0048/27. SWIFT: OBKLAT 2 LWEL. DVR0939838, FN164144p b LG Wels, UID.Nr. ATU43666001