



### Innovative Roland Technology Overview

#### Award-winning SOLJET PRO III Technology



The SOLJET PRO III XJ-640 featuring Roland Intelligent Pass Control won the 2007 “DPI Product of the Year” prize in the Poster Category for wide format color output devices

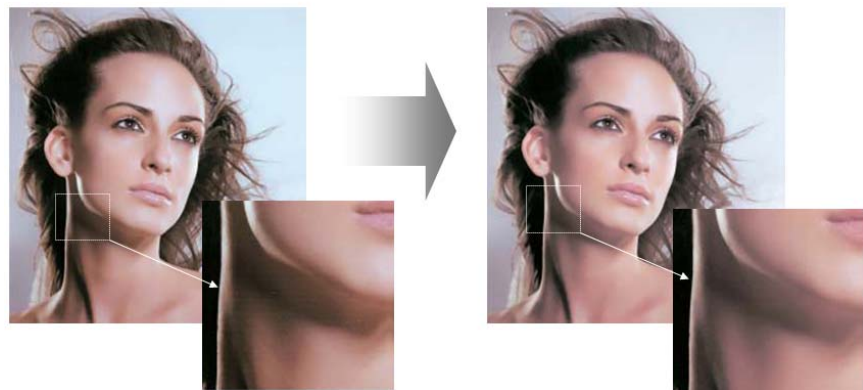
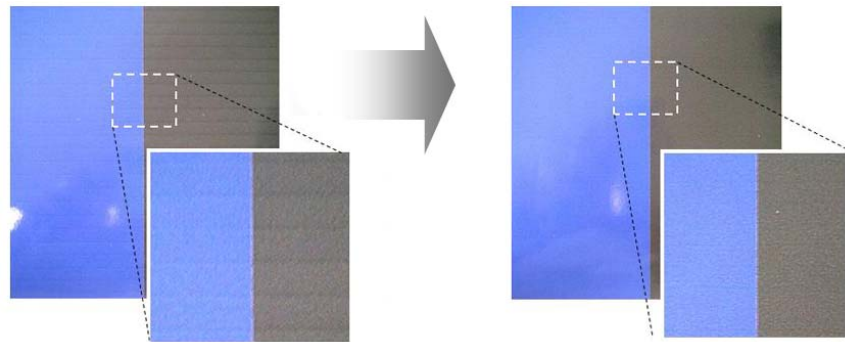
Roland Intelligent Pass Control™ is revolutionary, patent pending technology that has dramatically enhanced the overall productivity of the SOLJET™ PRO III series. Originally developed for the SOLJET PRO III XJ inkjet printer series, Roland Intelligent Pass Control is now fully integrated into the new XC-540 printer/cutter for the ultimate in digital printing performance.

A fundamental building block of PRO III technology, Roland Intelligent Pass Control has doubled the XC-540's productivity in Standard print mode on vinyl for finished graphics with even better image quality and virtually no banding. It also enhances print quality in every print mode for exceptionally smooth gradations and flawless solid colors.

Roland Intelligent Pass Control is based on a 3-dimensional system that precisely controls the ink firing at the edge of each pass to virtually eliminate banding and deliver the exact right density for each specific media. This innovative density control combined with optimized mask patterns on edges between bands delivers outstanding print quality and greater throughput.

#### Key Advantages

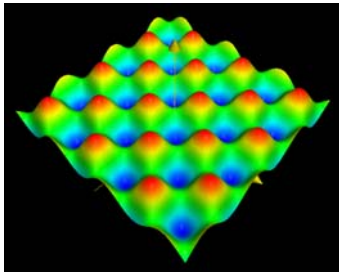
- Roland proprietary, patent pending technology delivers award-winning image quality for all SOLJET PRO III models including new and existing XC-540 printer/cutter even when compared against competitive printers claiming similar resolution print modes.
- Optimizing the variable ink droplet size and placement balances the need for speed and image quality in all print modes for superior results.
- Visible difference in imaging performance that increases printing accuracy across a wide range of coated and uncoated media.
- Implemented in Roland VersaWorks™ RIP software via fully-tested ICC profiles and user-selectable print modes.



Without Roland Intelligent Pass Control

With Roland Intelligent Pass Control

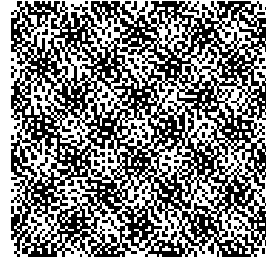




3 dimensional Concept model



Mask pattern image



Mask pattern

## Features & Benefits across the SOLJET PRO III Series

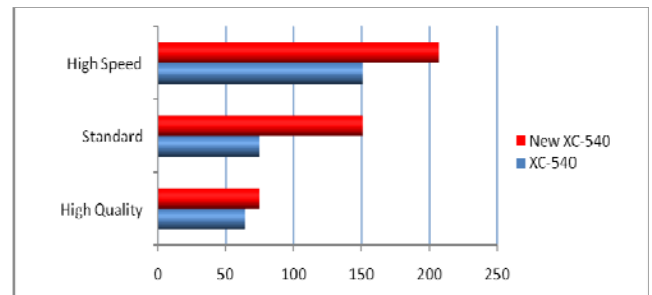
Roland Intelligent Pass Control delivers the Pure Print Performance that graphics professionals demand

1. Improvements in print quality and consistency in all print modes
  - Dramatically reduces printer banding
  - Smoother overall appearance in Bi-directional printing
  - More consistent and stable results with less influence by factors such as media feed calibration
2. Increased throughput and productivity
  - Better Image Quality in the faster print mode
  - Fast production of durable graphics output for a broad range of applications
3. Greater media compatibility
  - Better imaging performance on a wider range of coated and uncoated media

## Expanded Media Compatibility for XC-540

There are several media choices that are now capable of printing at higher speeds in Standard mode with the application of Roland Intelligent Pass Control and the Roland VersaWorks RIP software.

- Standard mode (360x720dpi – 4 pass) at 151 sfph can be achieved when selecting Generic Vinyl 1, ESM-CWVR Calendered Wrap Vinyl, Permanent Adhesive, or ESM-VTV2 View Thru Vinyl, Removable Adhesive settings.
- Standard mode (360x720dpi – 5 pass) at 126 sfph can be achieved when selecting Generic Vinyl 2 in Roland VersaWorks



## Simple Upgrade Path for existing XC-540 owners

Just three simple steps to implement Roland Intelligent Pass Control features:

1. Upgrading Firmware to Ver.2.2 (or later)
2. Upgrading Roland VersaWorks RIP software to Ver.2.61 (or later)
  - Roland Intelligent Pass Control supported profiles for Roland media will be added by upgrading Roland VersaWorks to Ver.2.61 (or later).
  - Roland Intelligent Pass Control printing is activated by using Roland Intelligent Pass Control profiles.
3. XC-540 owners should also be sure to use the newly upgraded XC-540 media flanges that are included in the upgrade, ensuring precise, secure media tracking through the longest unattended production runs.

