

What is “Firmware Installer”?

“Firmware Installer” is an application for installing firmware in user's printer.

Supported Environment

We recommend to use this application on operating system such as Microsoft® Windows 7, Vista or XP.

How to Install

It is not necessary to install Firmware Installer. Just put Firmware Installer Execution file on your computer.

Firmware Installer and Supported Model Series

<USB Connection>

- SP300Firm.exe: SP-300 Series
- BN20Firm.exe: BN-20

<Ethernet Connection>

- PRO2Firm.exe: ProII (V) Series
- AJFirm.exe: AJ-1000(i)/740(i)
- FPFirm.exe: FP-740
- PRO3Firm.exe: XC, XJ Series
- VPFirm.exe: VP-540(i)/300(i)
- SJ1000Firm.exe: SJ-1000/1045EX
- SP540Firm.exe: SP-540 Series
- RSFirm.exe: RS Series
- LECFirm.exe: LEC Series
- SPiFirm.exe: SPi Series
- VSFirm.exe: VS-640
- LEJFirm.exe: LEJ-640
- LEFFirm.exe: LEF-12

How to Uninstall

Delete the Firmware Installer Execution file from your computer. You don't need special way to uninstall.

How to Use

① Preparation for your printer

Turn on Main Power Switch and Turn off Sub Power Switch.

Please be confirmed that there is no printing data transmissions between the printer and your computer.

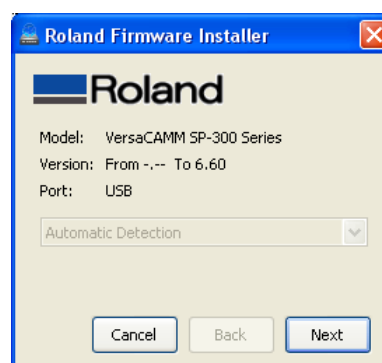
② Preparation for your computer

Please be confirmed that cable connections between printer and your computer.

③ Execution of Firmware Installer

Double-click Firmware Installer execution file and you can see the dialog as shown below and next page.

<In case of USB connection>

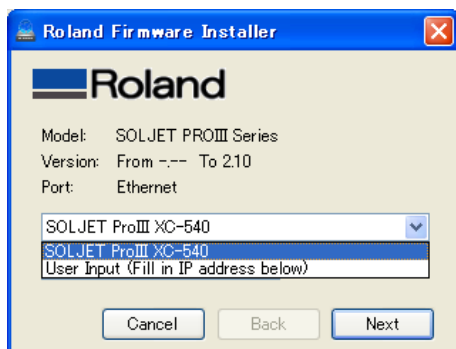


If you click “Next” button, it proceeds next dialog.

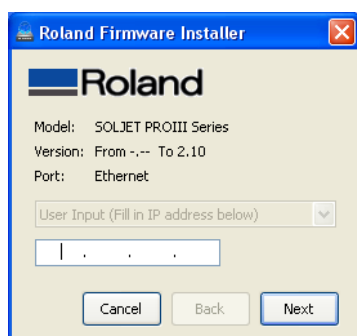
If you click “Cancel” button, you can exit from Firmware Installer.

<In case of Ethernet connection>

If you set up the Roland VersaWorks, Model names are automatically listed in the box.



If there are not printer you want to install new firmware, choose "Manual Input" and fill in IP address in the box.

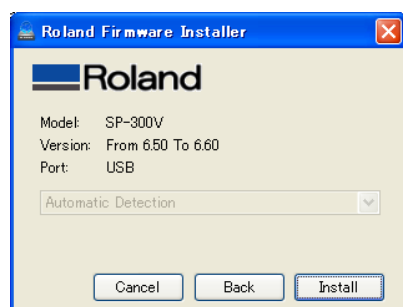


If you click "Next" button, it proceeds next dialog.

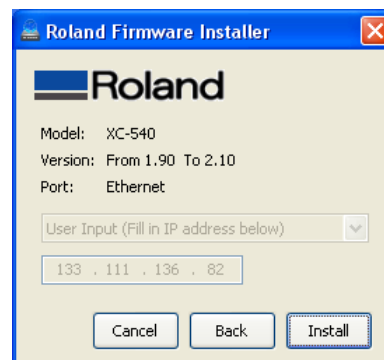
If you click "Cancel" button, you can exit from Firmware Installer.

④Checking Firmware Version and supported Models plus Start Installation.

<USB Connection>



<Ethernet Connection>

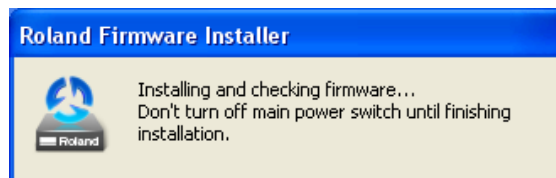
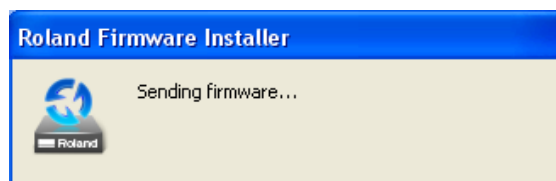


Please check model name and version before clicking "Install" button.

If you clicked "Back" button, the dialog goes back to the previous dialog.

If you click "Cancel" button, you can exit from Firmware Installer.

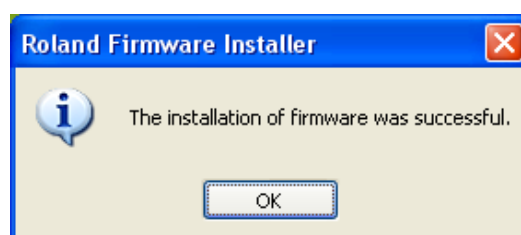
⑤during Installation



Don't change power switches during installation. It may takes a few minutes by your environment.

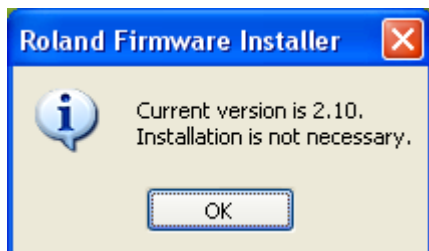
⑥End of installation

If the installation is successful, the message below will comes up and goes back to the top dialog.



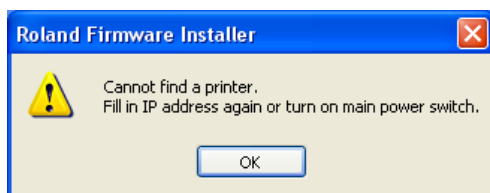
About Message

Please check the version of Firmware Installer and version of your printer.



If the application cannot get information from Printer, please check the filled IP address, Main power switch ON, or connection of USB cable.

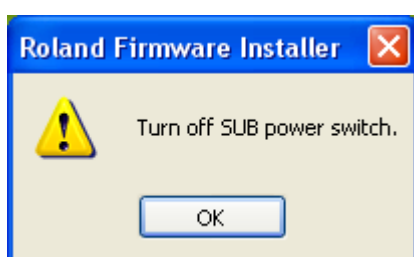
* In some series, this message comes out if the Supported model is different.



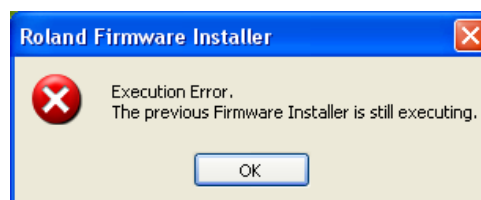
Supported Model is different from Model type Firmware Installer Please Check the supported Models of Firmware Installer.



If the Sub Power Switch is ON, the Message comes up. Please turn off Sub Power Switch and click "OK" button.



During Firmware Installer is executing, another Firmware Installer cannot execute. Please wait until the Firmware Installer finishes.

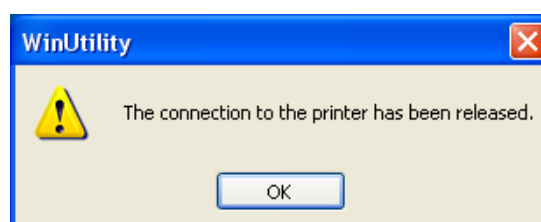


If it failed to send Firmware, please restart your printer.

The message comes out If you change power switch during sending Firmware and if installed version is not valid version.



During installing BN20 firmware, the message comes up because the communication between Utility software and BN-20 is temporally terminated. Please click "OK" button to close the message.



Cautions

In case of turning main power switch during installation, LCD shows "SUM ERROR" or the application becomes not to communicate with the printer. Then please contact your service engineer.

In case of installation by USB cable, Windows starts "new device" wizard after installation of firmware.
Please delete previous SP-300 series driver and install new one.