



Advanced Solutions Division

Support Bulletin: RASD-SB00022

Model: Roland GX-24

Subject: Firmware Update

Date: 7/5/2006

Author: RR

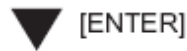
The following document outlines the procedure for updating the firmware on the Roland GX-24 Servo cutter.

1. Connect the GX-24 to the PC via the USB or RS-232 Serial cable.
2. Connect the AC Adapter to the GX-24 while pressing the [UP], [DOWN] and [LEFT] keys.

[▲] , [▼] , [◀] + AC Adapter

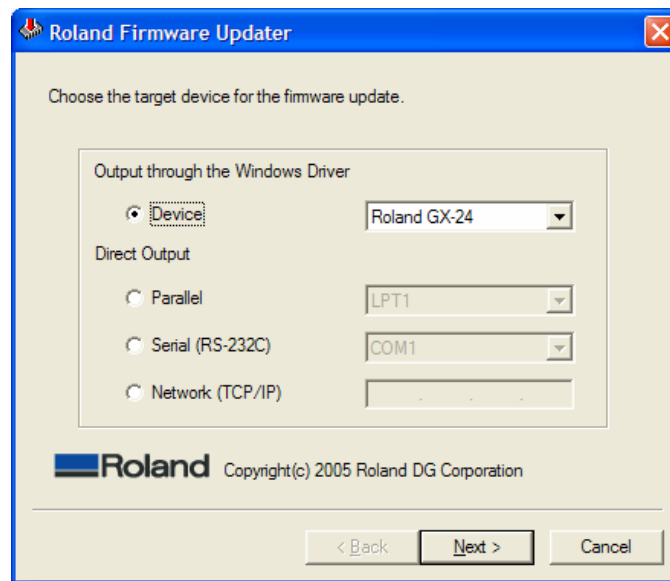
3. When the machine powers on, the display should read [ARE YOU SURE?], at this point press the [ENTER] key.

ARE YOU SURE?



4. When the LCD shows [WAITING], launch the Roland Firmware Updater and select either the Output through the Windows Driver or select Direct Output and the COM port.

WAITING



Support Bulletin: RASD-SB00022

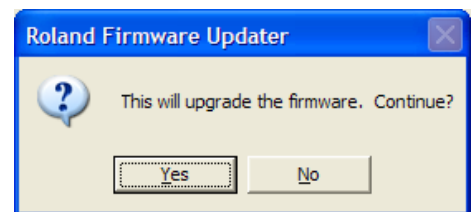
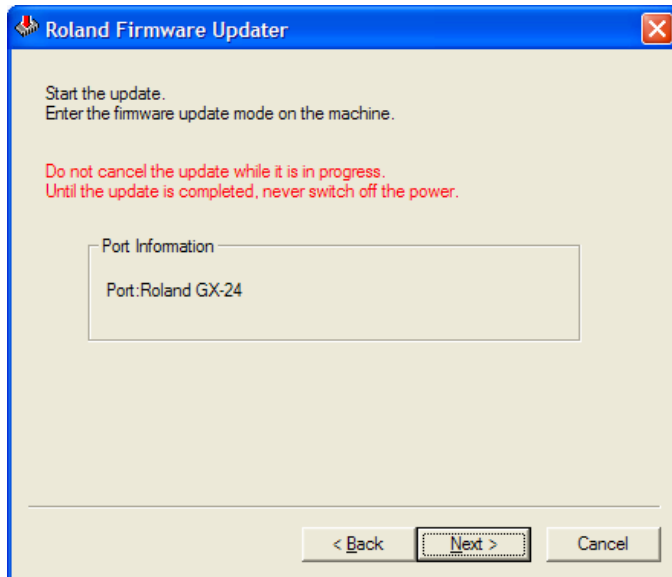
Model: Roland GX-24

Subject: Firmware Update

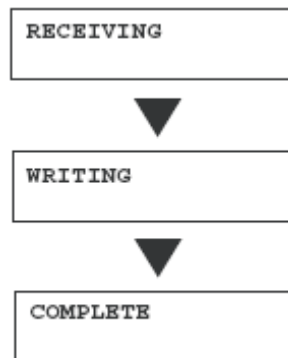
Date: 7/5/2006

Author: RR

-
5. The next dialog verifies the connection to the GX-24. If the machine is ready for the data transfer, click Next and then Yes to start the firmware download to the machine. Do not power the machine off during the download process.



6. Once the firmware download is processed, the GX-24 LCD will read.



7. When the upgrade is completed, [COMPLETED] will be displayed on the LCD. At this time, you may power the GX-24 off and back on to take the new firmware.