

4-3 HOW TO UPGRADE FIRMWARE (Referential Time : 5 minutes)

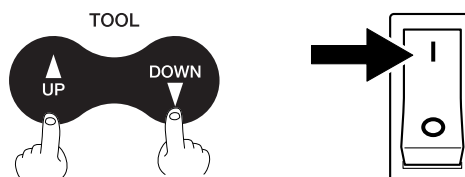
- 1 Connect PC and JWX-10 with the USB Cable.



The following items are necessary for this operation.

1. Firmware
2. PC (MS-DOS needs to be started.)
3. Dropout.exe
4. USB cable

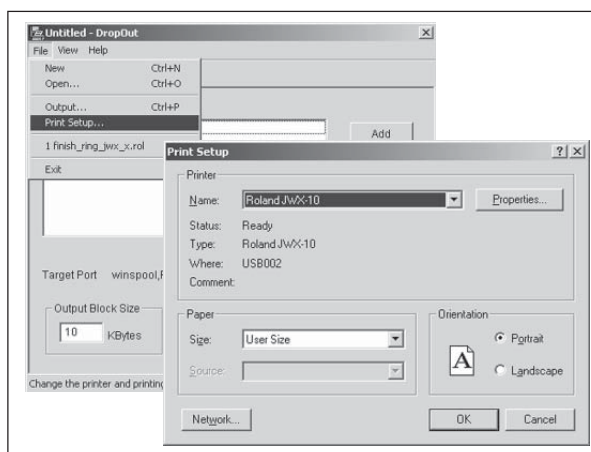
- 2 Turn on the Primary Power SW while pressing the TOOL-UP and TOOL-DOWN buttons to enter the firmware upgrade mode.



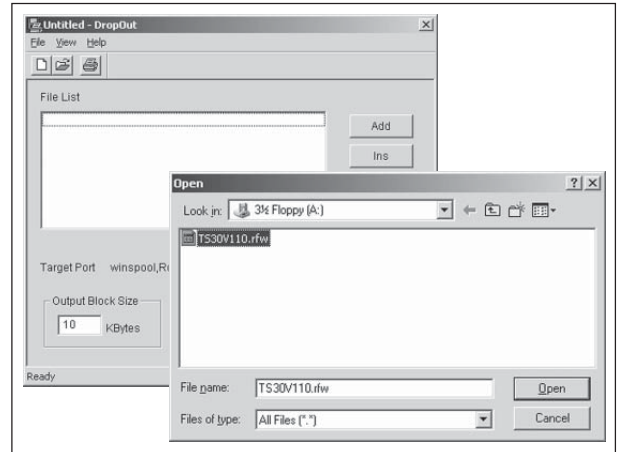
- 3 Start Dropout.exe.



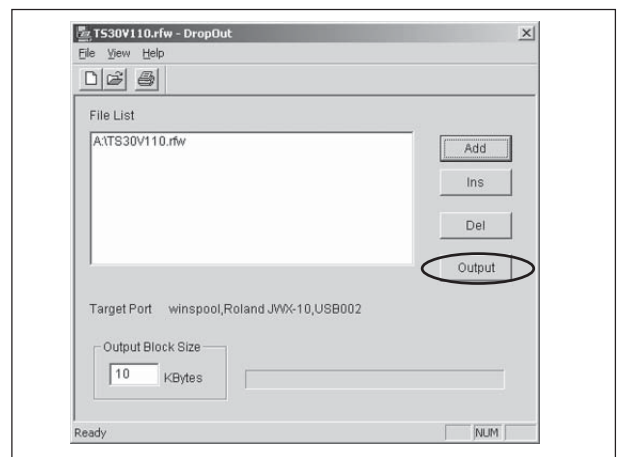
- 4 Open the Print Setup dialog from the File menu. Then, select JWX-10 and click OK.



- 5** Click Add.
Then, select the firmware file and click Open.



- 6** Click Output.
The Dropout.exe sends the firmware to the machine.



- 7** When the machine receives the firmware, the SCANNING LED starts blinking every 0.2 seconds.
When it has completed, the SCANNING LED stops blinking.

If it fails, the SCANNING LED blinks more quickly and never stops. Turn off the Primary Power SW, and try again.