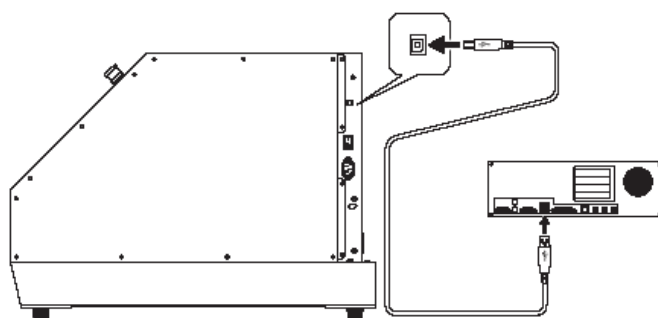


### How to Update Firmware

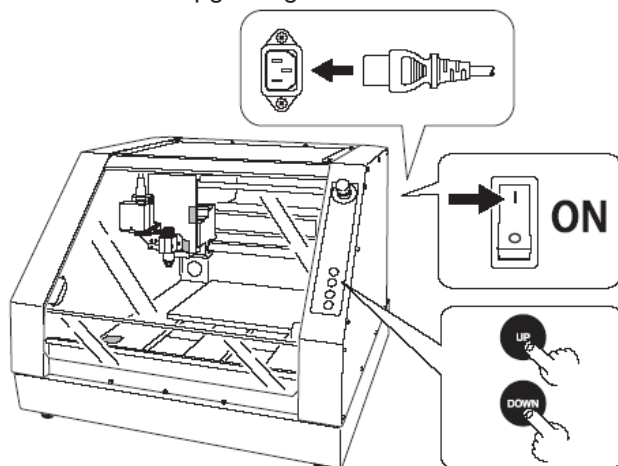
You need to have the MDX-40A Driver installed and be able to communicate with your machine.

1. Connect machine to PC using USB cable.

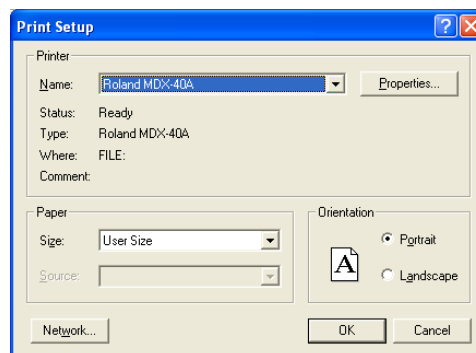
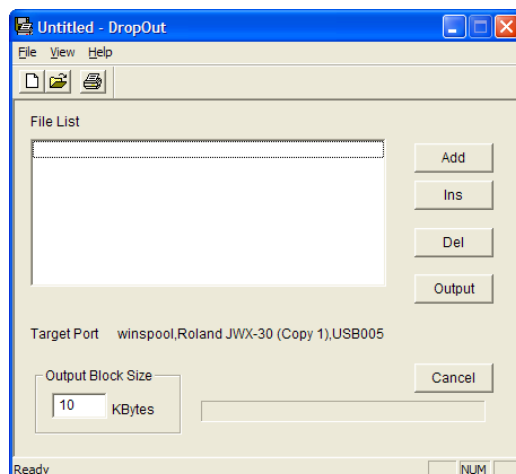


< Right side >

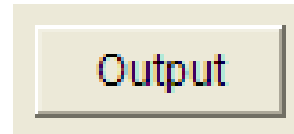
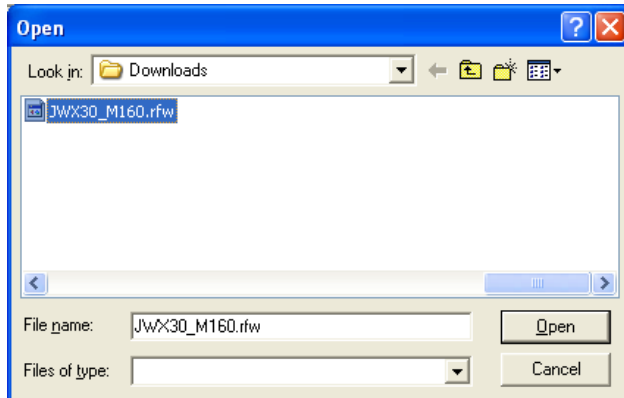
2. Turn on the main power SW while pressing [ UP ] and [ DOWN ] keys at the same time to enter firmware upgrading mode.



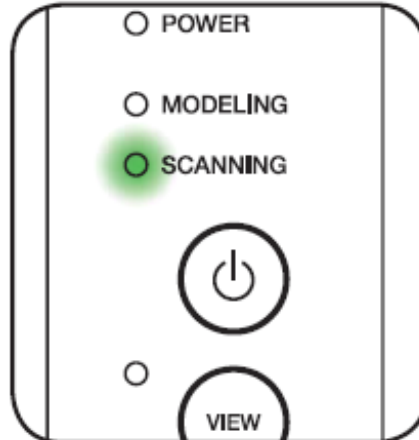
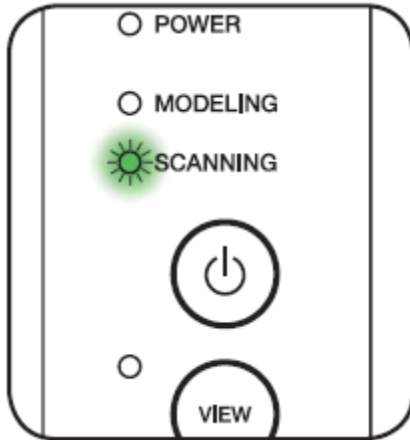
3. Start Dropout.exe program. Click on "File", "Print Setup", and select Roland MDX-40A from list.



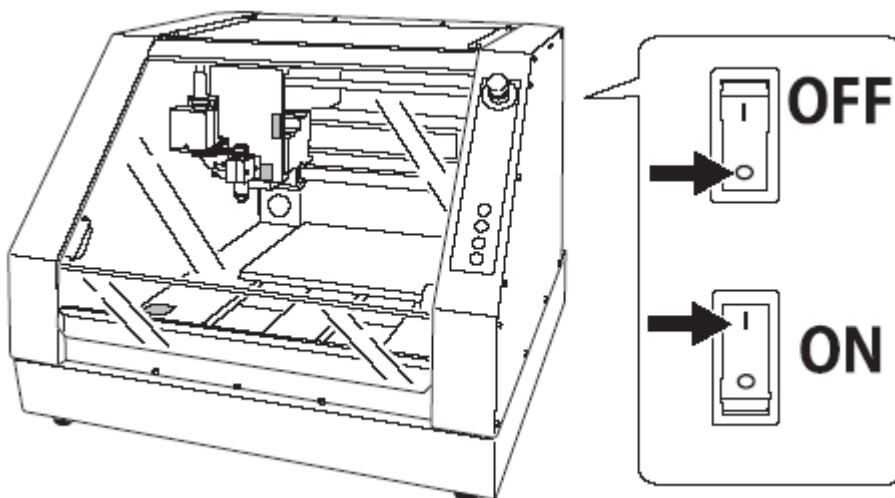
- Click on "Add" button and select firmware. Click "Output" to send firmware to the machine.



- The Scanning light will blink quickly when the machine is receiving the firmware. When the light has stopped flashing, update has been completed.



- Restart machine to activate new firmware.



- Turn on sub power

# PASSPORT<sup>®</sup> RT TO SUCCESS



Lighted

- POWER
- ☀ MODELING
- SCANNING

