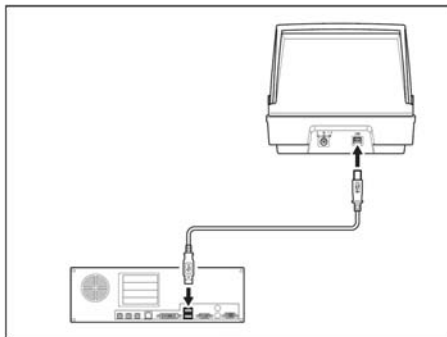


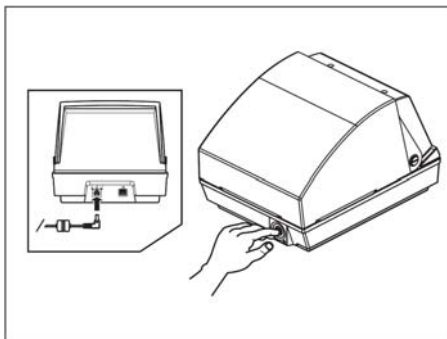
Support Bulletin: RASD-SB00047
Model: Roland MPX-80
Subject: Firmware Update v1.10
Date: 11/15/2007
Author: RR

The following procedure outlines how to update the firmware on the Roland MPX-80 Photo Impact Printer. This firmware update corrects an issue where if the machine is connected to a different port (other than the port the driver was originally installed), the driver reinstalls itself, creating multiple entries (MPX-80 copy1, MPX-80 copy2, etc...). After installing the firmware the driver may reinstall once again. If so, simply delete the other driver entries.

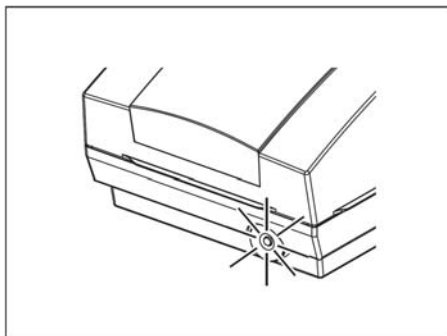
1. Ensure that the driver is installed and the MPX-80 is connected to the PC via the USB cable.



2. Connect the AC Adapter while pressing the Power button on the machine.

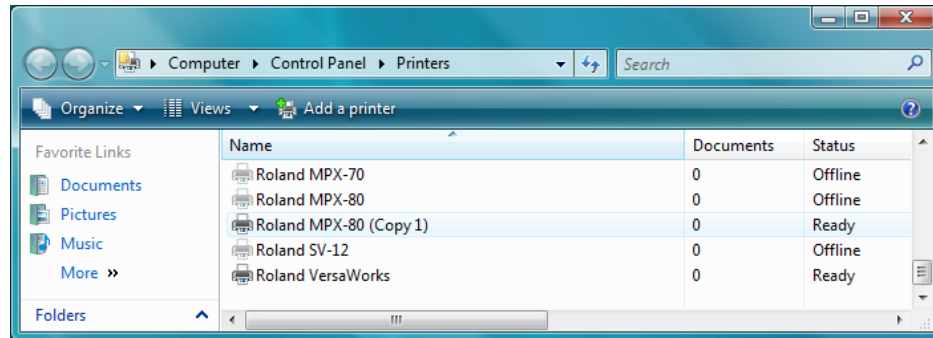


3. Continue holding the Power button until the Power LED starts blinking. Then release the button.

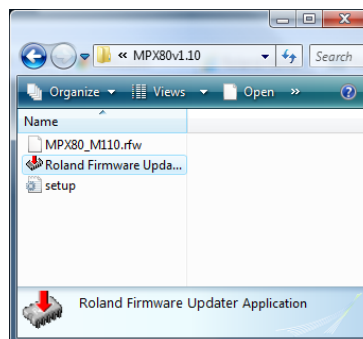


Support Bulletin: RASD-SB00047
Model: Roland MPX-80
Subject: Firmware Update v1.10
Date: 11/15/2007
Author: RR

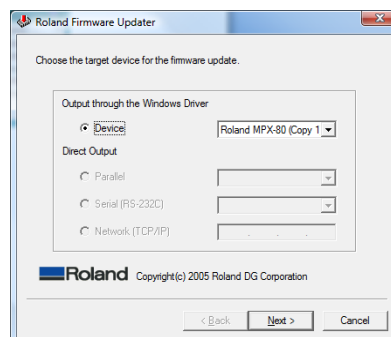
4. At this point, the operating system may install a copy of the MPX-80 driver. Wait until the new installation of the driver is complete before moving to the next step.



5. Launch the Roland Firmware Updater program.

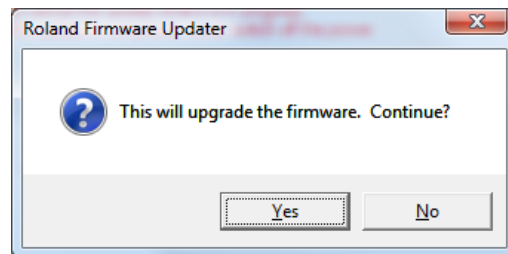
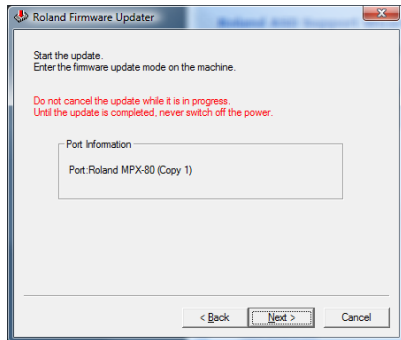


6. Ensure that the device shows as Roland MPX-80 (CopyX, where X= number) and click Next.

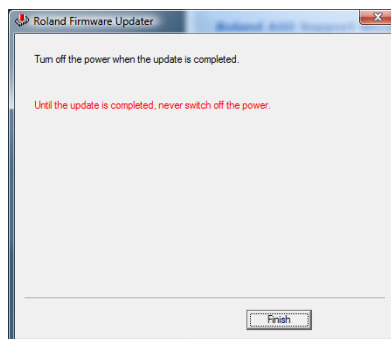


Support Bulletin: RASD-SB00047
Model: Roland MPX-80
Subject: Firmware Update v1.10
Date: 11/15/2007
Author: RR

- Click Next to execute the Firmware update and click Yes. Do not cancel or power the unit off during this process.



- The Power LED will begin to blink rapidly. Once the Firmware update is completed, the Power LED will turn solid. At this point disconnect/reconnect the AC Adapter and power the unit back on.



- When the unit is powered back on the driver will reinstall again. Let the driver completely install and then go to the Printer and Faxes window and delete any MPX-80 driver entries that are Offline (set Views to Details). At this point if the printer is powered off or disconnected/reconnected, it will not install another instance of the print driver.

