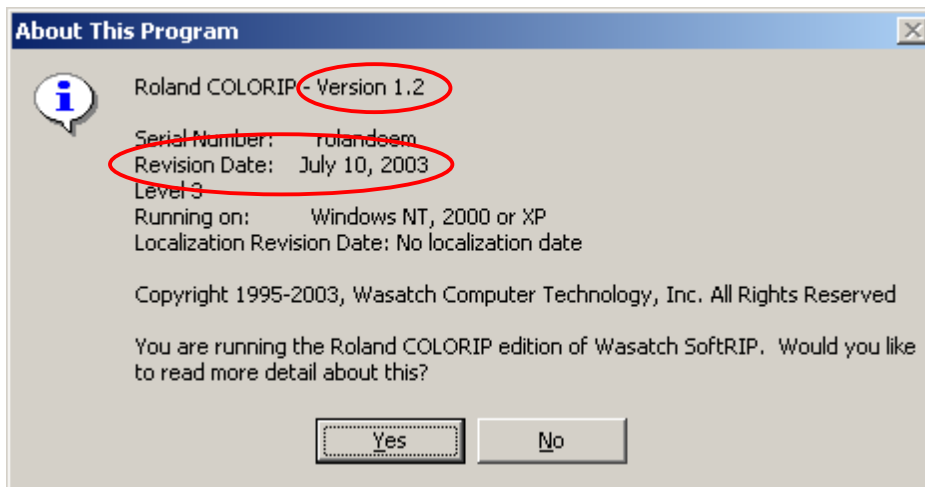


## How to Identify the Version of COLORIP

Roland COLORIP was initially released in January 2003 and since then it has been updated several times. Most of updates are available as a download from our support web page and it adds enhancements to the software.

In order to determine if your software is up-to-date, identify the version of your COLORIP software by checking the Version number and the Revision Date displayed in the **About This Program** dialog box. Then consult the table below to determine which official version of COLORIP you have installed.



To display the **About This Program** dialog box, navigate to **Help > About This Program**

Version and Date in About This Program		Official Version of COLORIP
Version#	Revision Date	
1.0	January 29, 2003	1.0
1.1	February 24, 2003	1.1
1.1	March 14, 2003	1.1A
1.1	April 14, 2003	1.1B
1.1	June 12, 2003	1.1C
1.2	July 10, 2003	1.2
2.0	September 23, 2003	2.0
2.0	October 10, 2003	2.0A
2.0	November 26, 2003	2.0B