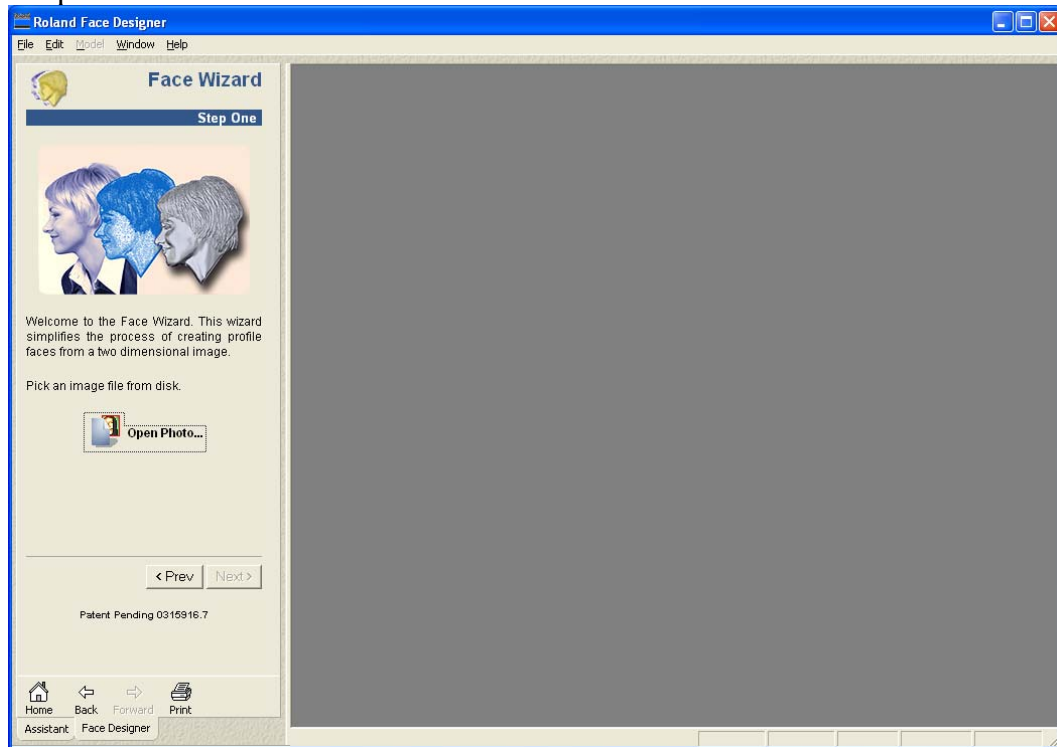
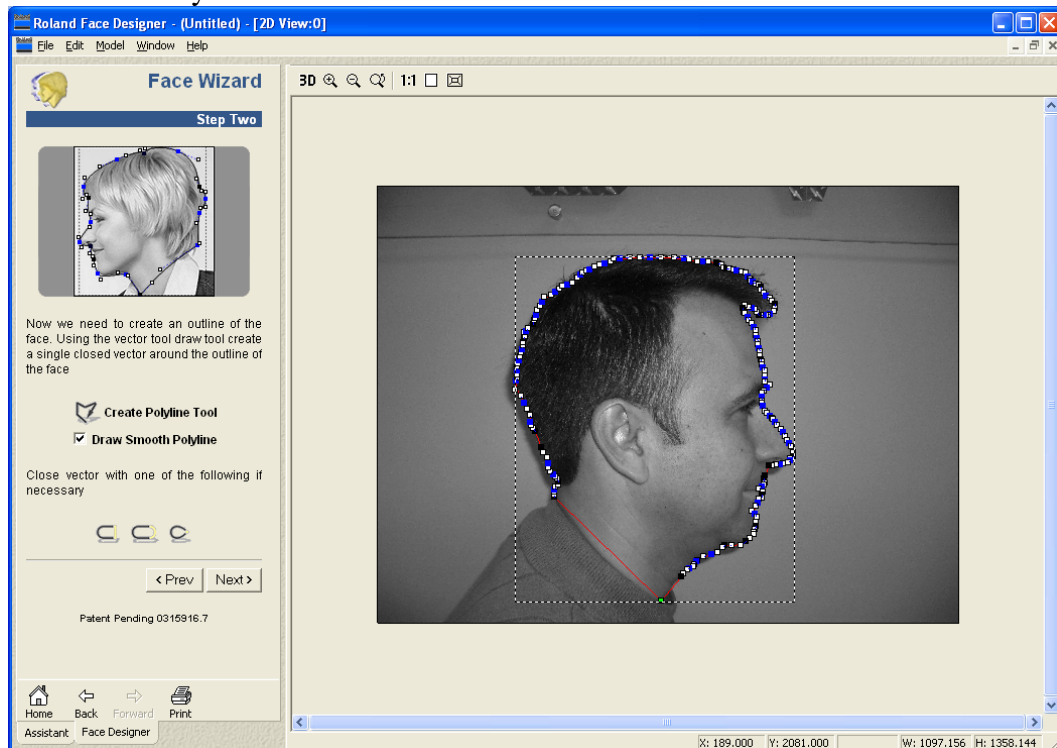


Roland Face Designer Workflow

1. Open a JPG, BMP, GIF, TIF image to create the 3D relief from. Image must be a side profile.



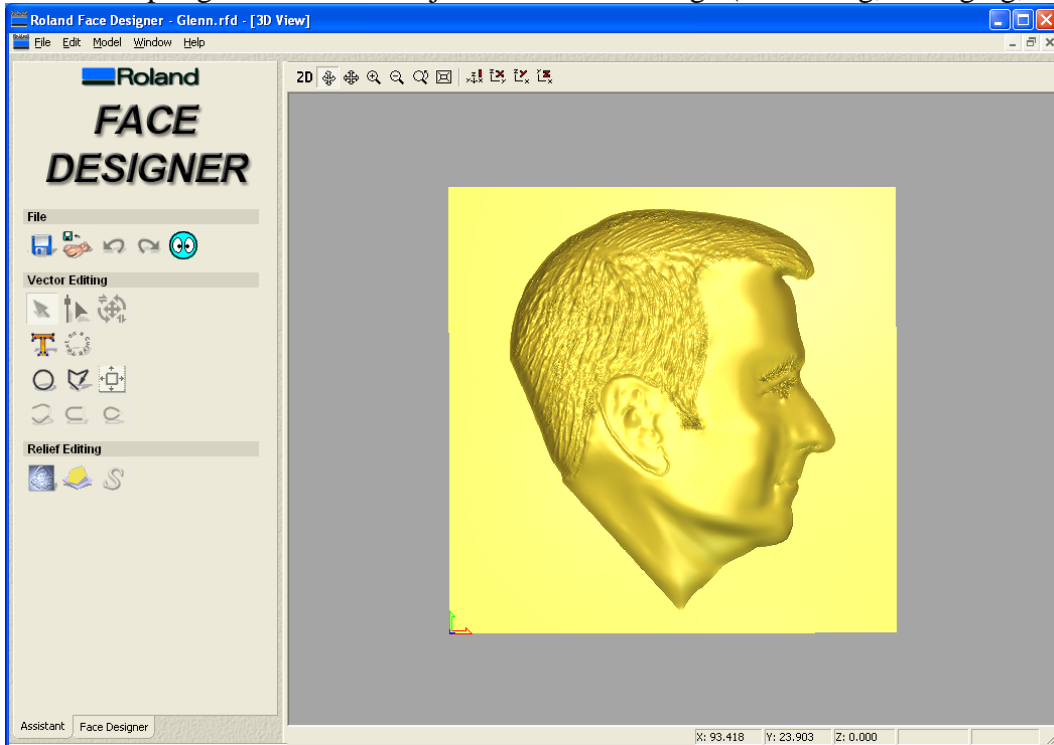
2. Create Polyline around face.



3. Select reference points (eyebrow and nape of the neck).



4. Use sculpting tools to make adjustments to the image (smoothing, smudging, etc...)



4. Save the relief for use with 3D Engrave or export direct to Roland Medal Editor (RX-50)

