

## What is "Firmware Installer"?

"Firmware Installer" is an application for installing firmware in user's printer.

## Supported Environment

We recommend to use this application on operating system such as Microsoft® Windows Vista, Microsoft® Windows XP or Microsoft® Windows 2000.

## How to Install

It is not necessary to install Firmware Installer. Just put Firmware Installer Execution file on your computer.

## How to Uninstall

Delete the Firmware Installer Execution file from your computer. You don't need special way to uninstall.

## How to Use

### (1) Preparing the printer

Turn on Main Power Switch and Turn off Sub Power Switch.

Please be confirmed that there is no printing data transmissions between the printer and your computer.

### (2) Preparing the PC

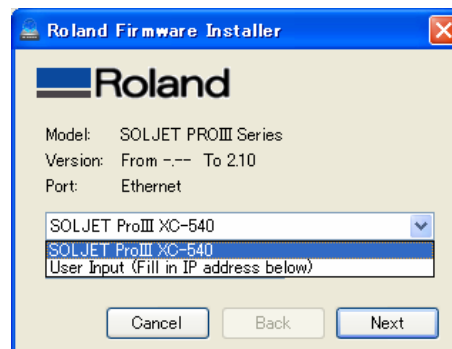
Please be confirmed that cable connections between the printer and PC.

### (3) Starting Firmware Installer

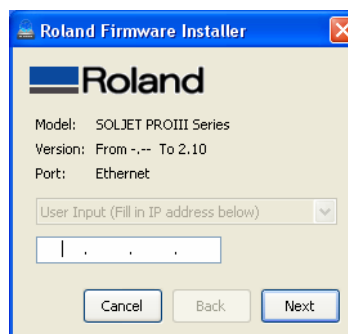
Double-click Firmware Installer execution file and you can see the dialog as shown below and next page.

#### *For an Ethernet Connected Printer*

If the printer settings are made on Roland VersaWorks, Model name is automatically listed in the box.

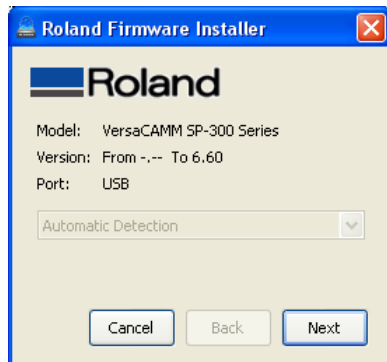


If a target printer is not listed, choose "User Input" and fill in IP address in the box.



Click "Next" button to it proceed to the next dialog.

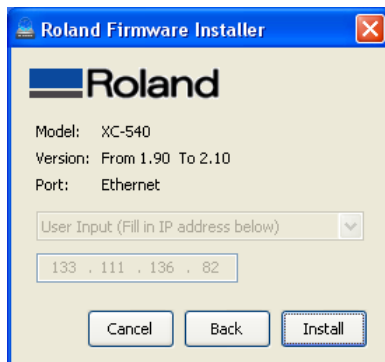
## For a USB Connected Printer



Click "Next" button to it proceed to the next dialog.

## (4) Starting Installation

### For an Ethernet Connected Printer



Check the Model and Version before clicking "Install" button.

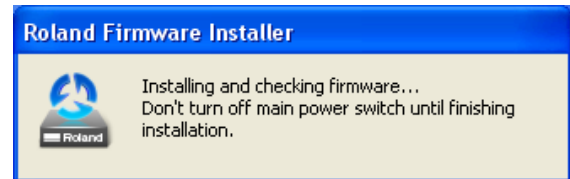
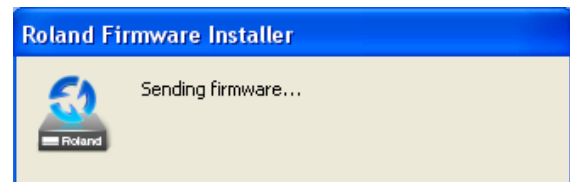
If you clicked "Back" button, the dialog goes back to the previous dialog.

If you click "Cancel" button, you can exit from Firmware Installer.

## For a USB Connected Printer



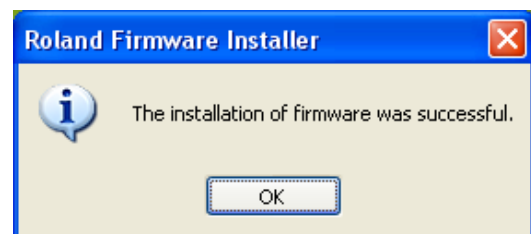
## (5) During Installation



Don't turn off power switch during installation. It may takes a few minutes depending on your environment.

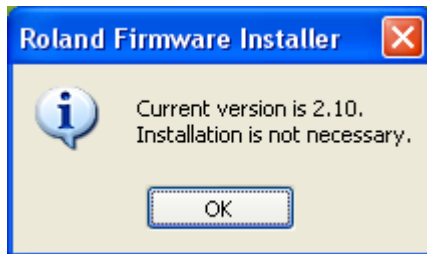
## (6) End of installation

If the installation is completed, the message below comes up and goes back to the top dialog.



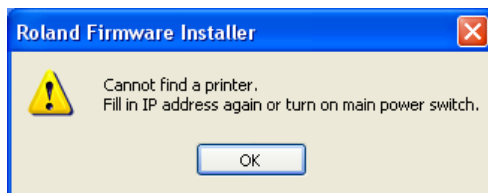
## About Message

Please check the version of Firmware Installer and version of your printer.



If the application cannot get information from Printer, please check the filled IP address, Main power switch ON, or connection of USB cable.

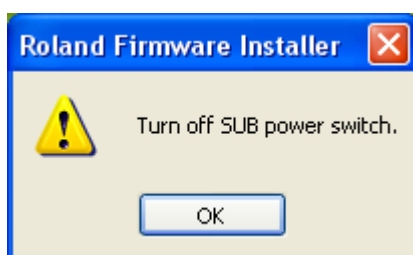
\* In some series, this message comes out if the Supported model is different.



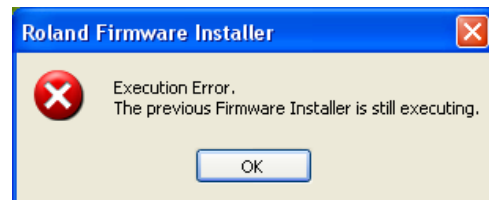
Supported Model is different from Model type Firmware Installer Please Check the supported Models of Firmware Installer.



If the Sub Power Switch is ON, the Message comes up.  
Please turn off Sub Power Switch and click "OK" button.



During Firmware Installer is executing, another Firmware Installer cannot execute. Please wait until the Firmware Installer finishes.



If it failed to send Firmware, please restart your printer.

The message comes out If you change power switch during sending Firmware and if installed version is not valid version.



## Cautions

In case of turning off the primary power switch during installation, LCD shows "SUM ERROR". Then please contact your service engineer.

In case of a USB connected printer, "new device" wizard comes up after installation of the firmware is completed.

Delete the existing windows driver and install new one.