

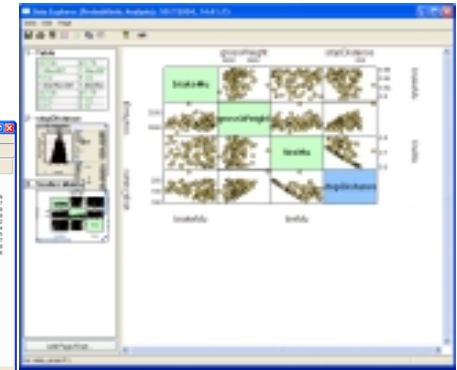
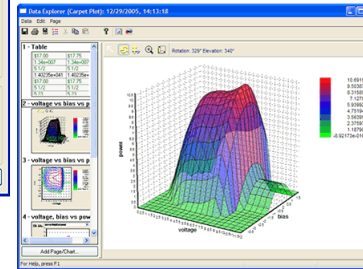
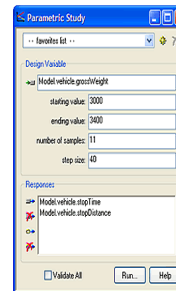
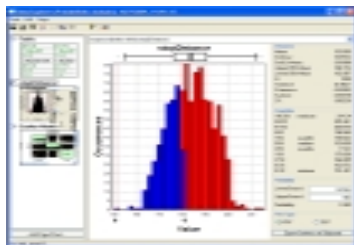
# ModelCenter 7.0

## DESIGN YOUR SUCCESS

ModelCenter® is a visual environment for process integration to support your entire design team. With ModelCenter, you can quickly create an engineering process and then perform complex design exploration techniques to find the best design. ModelCenter is adaptable, and works well with groups whose design processes change frequently.

ModelCenter automates the process of running the hundreds of design programs you use during a typical design project. Using ModelCenter, design data is automatically passed from one program to another, freeing you to concentrate on the results of the design and not the drudgery of running individual programs.

ModelCenter allows you to easily construct your design process as a series of linked applications with a simple interface. You can connect to your applications that are wrapped with the Analysis Server to build the process. Once completed, you will have organized analysis models, digitally mapped design procedures, and complete control over all of your product information.



### Easy to Deploy

ModelCenter integrates seamlessly with existing applications used by your entire team.

### Better Designs

ModelCenter gives you powerful tools to inspect designs and find weaknesses. Correcting these weaknesses early in the design process can save corporations millions. Trade studies within ModelCenter help you and your team find optimal solutions with lower weight, higher performance, and more robustness in the design.

### Reduces Errors

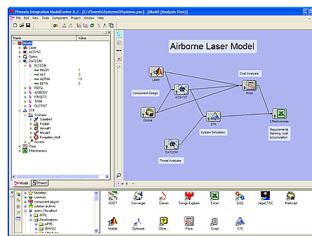
Manual data translation and linking is costly and error-prone. Automating this step in the design process helps reduce mistakes.

### Saves Time

ModelCenter eliminates the manual transfer of data between applications, thereby reducing design cycle time. With that "extra" time, you can evaluate more design alternatives which results in a better final product.

### Cohesive Team Environment

Your team of engineers can use ModelCenter to coordinate data and share design applications over a network of computers. Design data that used to be sent via fax, email, or ftp can now be linked automatically through ModelCenter.



1715 Pratt Drive, Suite 2000 ~ Blacksburg, VA 24060  
800.500.1936 ~ 540.961.5831 Fax ~ [www.phoenix-int.com](http://www.phoenix-int.com)

Copyright 2006 Phoenix Integration, Inc. All rights reserved.

## ModelCenter Features

### Visual Process Integration

Using ModelCenter, you graphically create a workflow of your applications by simply dragging and dropping applications from the Analysis Server. Information is linked as you create a dynamic sequence of tasks between each application. ModelCenter's powerful scheduling algorithm is the engine that automates all of the tasks.

### Design Exploration

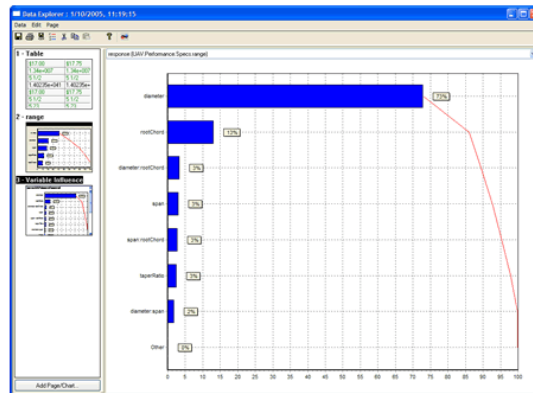
Once your applications are linked, you can run multiple trade studies with your in-house algorithms or the tools already integrated within ModelCenter.

ModelCenter's design exploration tools include:

- Parametric Studies
- Optimization
- Response Surface Modeling
- Design of Experiments
- Carpet Plots

The following third-party design exploration software is also available:

- Darwin Plug-In
- DOT Optimizer
- OptWorks
- ProbWork
- RSM Toolkit



Once you have performed a trade study on your Model, you can collect tables of data and plot various input and output values. Multiple graphs can be created and exported to other documents to easily create reports. In addition, your trade study results can be saved into a ModelCenter Project directory to keep a record of design changes.

### Plug-In Toolkit

The Plug-In Toolkit helps to directly incorporate your in-house trade study algorithms within ModelCenter. This customization capability allows you to select the most appropriate trade study algorithm for your problem on a case-by-case basis.

### System Requirements

#### Hardware Minimum

- 200 MHz Pentium Pro or Pentium II-class machine
- 64 MB RAM
- 130 MB Hard disk space to install
- 800 MB plus space for user data to run
- 800 x 600 video resolution

#### Hardware Recommended

- 500 MHz Pentium Pro or Pentium II-class machine
- 128 MB Ram
- 500 MB hard disk space, plus space for user data
- 1024 x 768 video resolution

#### Software

- MS Windows 2000 (SP 2 or greater), XP
- TCP/IP network protocol installed
- Internet Explorer 5.5 or later

#### Optional Software

- Microsoft Excel 97 or greater
- Mathcad 2000i or greater
- Mathlab

## DESIGN YOUR SUCCESS

### New Features

**Parallel Scheduling** – Components that are linked in a model but can be run in parallel are executed by the scheduler

**CenterLink Support** – Access to models stored in CenterLink directly from the Server Browser in ModelCenter

**Authenticated Users On Analysis Server** – This uses SSH in secure mode to create processes and files owned by the user of the directory.

**HTML Viewer** – Write HTML that uses VBScript to drive ModelCenter through its API. This allows users to get a customized view of a ModelCenter session.

### Fuzzy Logic Component For Optimization

#### Overall Basic Usability

- Icons in Component Tree
- Multi variables for Carpet Plot
- Autosave
- Array Slices
- Multi-drag drop
- Link Recovery



1715 Pratt Drive, Suite 2000 ~ Blacksburg, VA 24060  
800.500.1936 ~ 540.961.5831 Fax ~ [www.phoenix-int.com](http://www.phoenix-int.com)

Copyright 2006 Phoenix Integration, Inc. All rights reserved.