

## What is "CoPeck"?

"CoPeck" is an application software for getting a report of the printer.

## Supported Environment

Microsoft® Windows 7  
Microsoft® Windows Vista  
Microsoft® Windows XP  
Microsoft® Windows 2000

## How to Install

Installation is not necessary.  
Just put the CoPeck.exe file on your computer.

## Supported Models

### <Type1>

- PROII Series with firmware 2.0 above version
- PROII V Series
- SP-300(V)/540V(W)
- FLJ-300
- SJ-1000/1045EX

### <Type2>

- AJ-1000(i)/740(i)
- FP-740

### <Type3>

- PROIII Series
- (XC-540(W)(MT), XJ-740/640/540)
- VP-540(i)/300(i)
- LEC-330/300(A)
- RS-640/540

### <Type4>

- SP-540i/300i
- VS-640

## How to Uninstall

Delete the CoPeck.exe and also CoPeck.ini, which are created under the [Windows] directory.  
This application does not use registry.

## How to Use

### [1] Preparation for printer

Turn on Main Power Switch and Turn off Sub Power Switch.

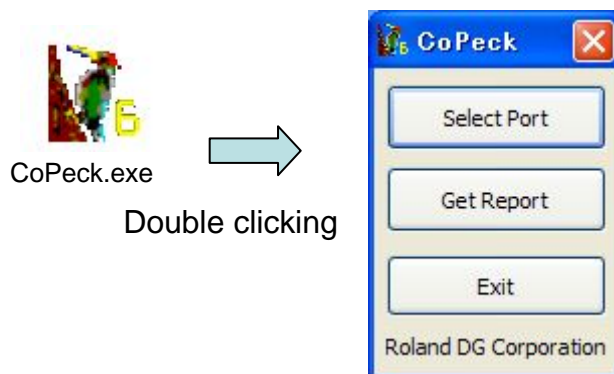
Please be confirmed that there is no printing data transmission between the printer and PC.

### [2] Preparation for PC

In case of using parallel connection on Windows 2000 or Windows XP, stop the spool service during using this application. After using this application, restart the spool service.

### [3] Starting CoPeck

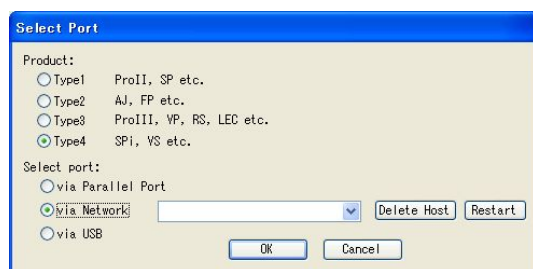
Double-click CoPeck.exe and you can see the dialog as shown below.



## [4] Selecting models and connection port

Open the [Select Port] dialog by clicking the "Select Port" button.

Select the type of the target printer in Product selection. For the details, refer to [Supported Models] in the previous page.

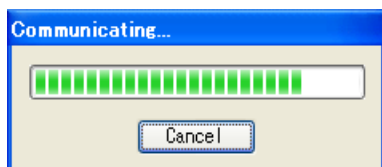


Select connection port.

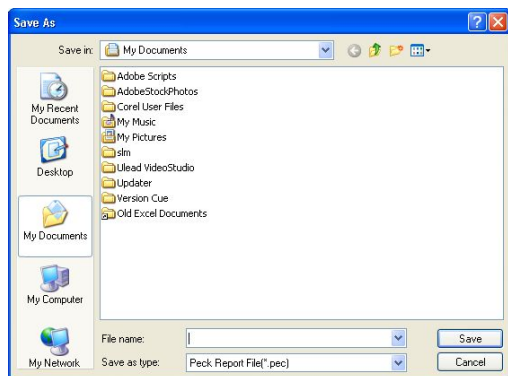
If you select [via Network], type in IP address.

## [5] Getting a report from your printer

Click the [Get Report] button.

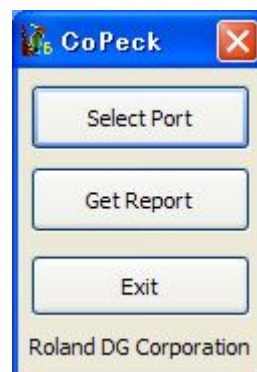


Save it as a file.



## [6] Finishing CoPeck

Finish CoPeck by clicking the [Exit] button.



## If CoPeck cannot get a report...

Please check the points below.

1. Is the Sub Power Switch of the printer off?
2. Did you select correct model and port?
3. Is IP address correct?
4. In case of PROII series, is firmware version 2.0 or above?