

# Pro/ENGINEER® Interface for Rhino

## Installation Instructions for Pro/ENGINEER Wildfire® 3.0

### Prerequisites

- Pro/ENGINEER Wildfire 3.0 (M140) or later
  - The build of the plug-in does not have to match the Pro/ENGINEER build.
  - A separate plug-in is used with all builds of Pro/ENGINEER Wildfire 4.0
- Pro/ENGINEER Wildfire 3.0 supported Windows platform (either 32 bit or 64 bit)
  - Interface for Rhino is only supported on Windows platforms.
- Download the appropriate platform specific free plug-in from PTC's web site
  - The plug-in is available from the [free downloads](#) page of PTC.com.
- The plug-in is included with Pro/ENGINEER Wildfire 4.0 (M010 and later).\*

Implement only one of the installations (Local or Network) shown below.

### Local Installation

1. Extract the contents of the appropriate platform zip file to:

```
<Pro/ENGINEER load point>\<platform>\gplugs\
```

Where <platform> is "i486\_nt" on Windows 32 bit systems and "x86e\_win64" on Windows 64 bit systems.

The resulting folder structure should be:

```
<Pro/ENGINEER load point>\<platform>\gplugs\RhinoGplug\gPlugRhino.dll
<Pro/ENGINEER load point>\<platform>\gplugs\RhinoGplug\opennurbs.dll
<Pro/ENGINEER load point>\<platform>\gplugs\RhinoGplug\Rhino2G.exe
```

2. Restart Pro/ENGINEER for the changes to take effect.

### Network Installation

1. Extract the contents of the appropriate platform zip file to a network location accessible to all Pro/ENGINEER users. The resulting folder structure should be:

```
<Common Network Location>\RhinoGplug\gPlugRhino.dll
<Common Network Location>\gplugs\RhinoGplug\opennurbs.dll
<Common Network Location>\gplugs\RhinoGplug\Rhino2G.exe
```

2. For all Pro/ENGINEER users, add the config.pro option:

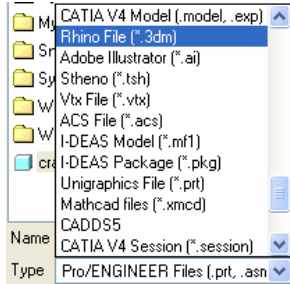
```
gplug_dir <Common Network Location>\RhinoGplug
```

3. Restart Pro/ENGINEER for the changes to take effect.

\* The timing of any product release, including any features or functionality, is subject to change at PTC's discretion.

## Validation

Select File > Open > Type and look for Rhino File (\*.3dm).



## Additional Information

Please see Interface for Rhino from the [free downloads](#) page of PTC.com for help instructions, processor capabilities, and more.

\* The timing of any product release, including any features or functionality, is subject to change at PTC's discretion.